

The KLC Path



**STEP 1:
GROW
YOURSELF**

**Your
Leadership
Edge**

**Lead
for Change**

**STEP 2:
MOBILIZE
OTHERS**

**STEP 3:
CREATE
CHANGE**

**Equip
to Lead**



THIRD FLOOR RESEARCH

THE IMPACT OF EXPANDING LEADERSHIP DEVELOPMENT

How saturating your organization
with leadership development can lead to more
progress on what you care about most.



KANSAS
LEADERSHIP
CENTER



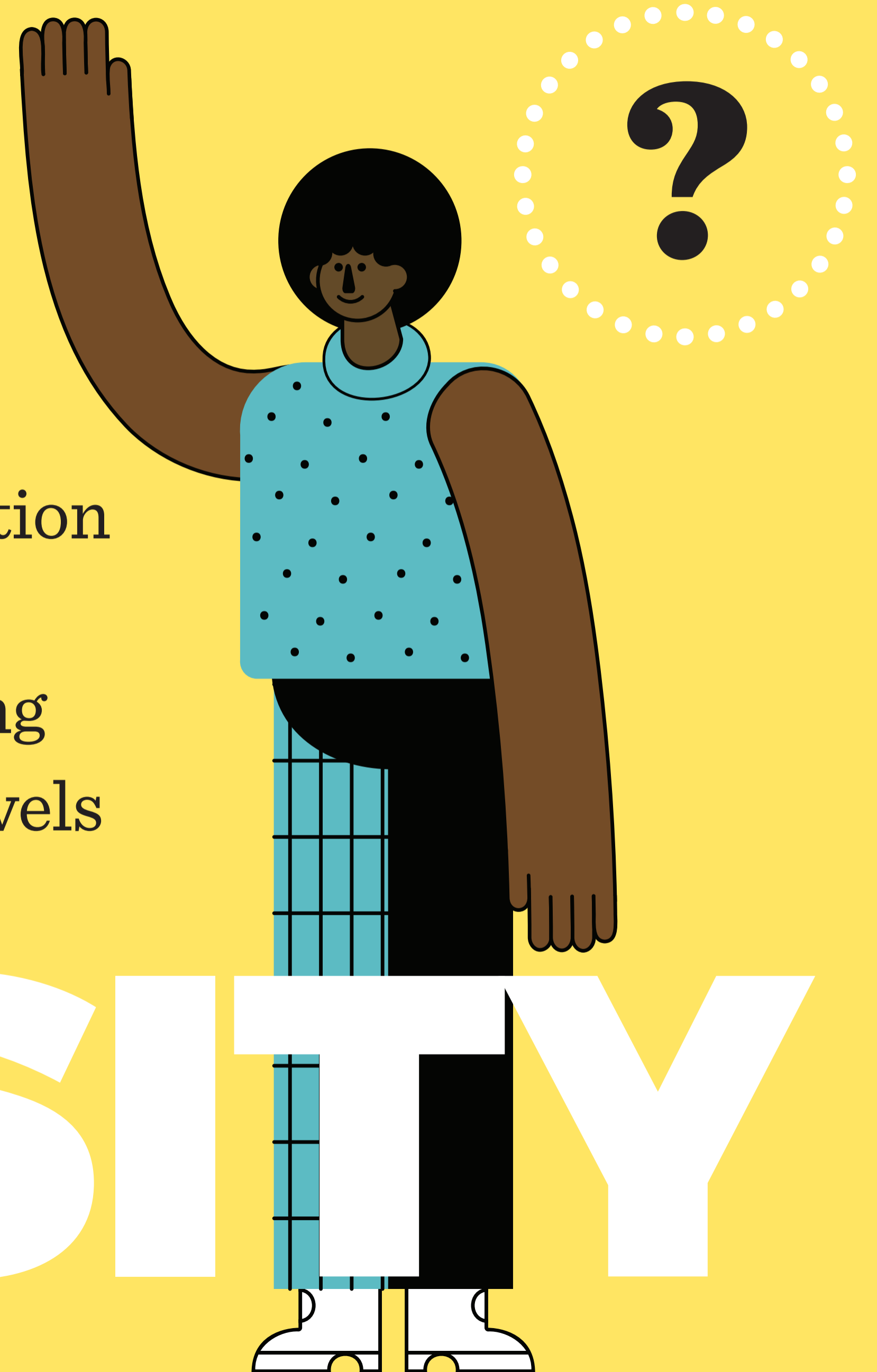
GAP

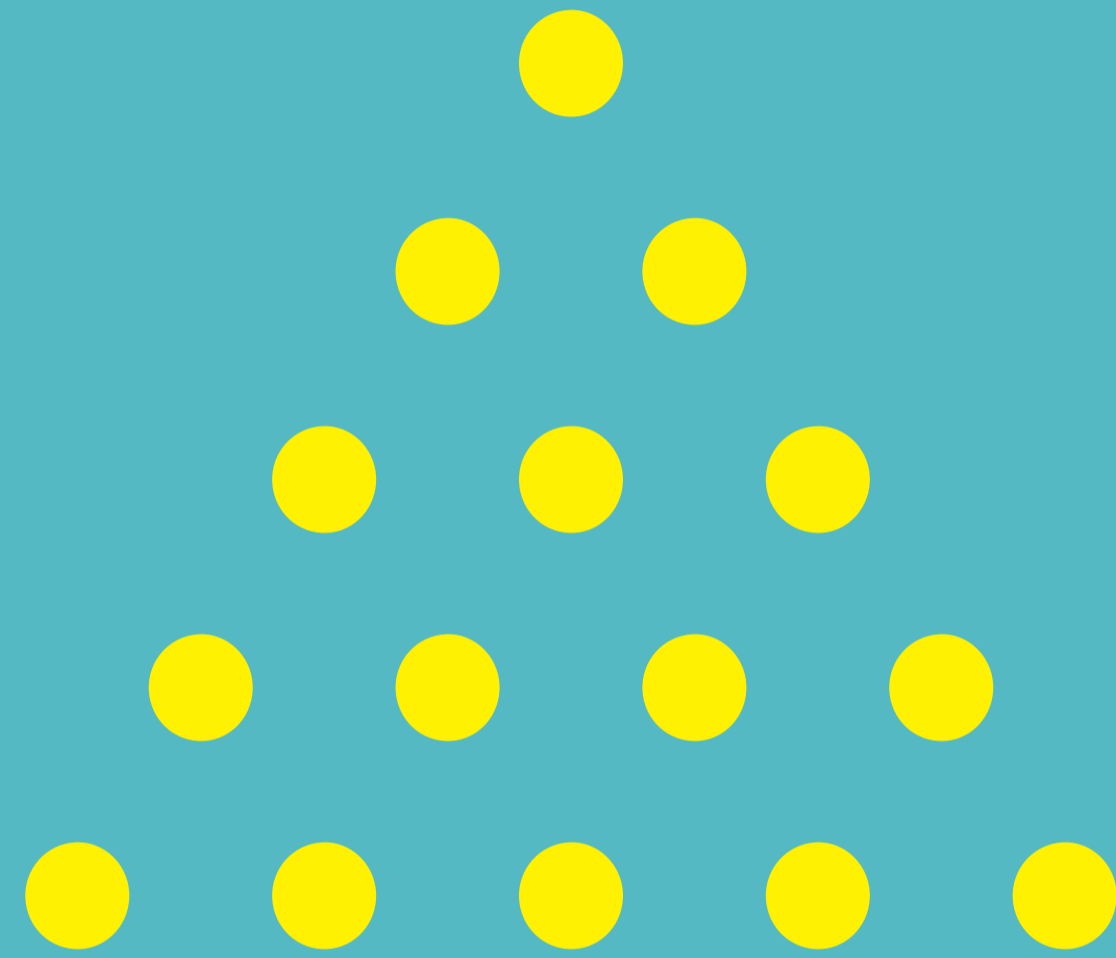
Most leadership development programs focus on a select few, typically those *at the top* of an organization or being groomed for executive management.

RESEARCH CONDUCTED BY
ORS IMPACT | SEATTLE
FUNDED BY A THIRD-PARTY

OUR CURIOSITY

What happens
when an organization
invests in KLC
leadership training
for people at all levels
of authority?





Organizations saturated
with KLC training



More people
exercising leadership



**DIAGNOSING
SITUATIONS
BEFORE JUMPING
TO ACTION.**

More people...

**ENGAGING
OTHERS AROUND
A SHARED
PURPOSE**

**MANAGING
THEMSELVES
DURING DIFFICULT
MOMENTS.**

**INTERVENING
TO MOVE
A CHALLENGE
FORWARD**

More people
exercising leadership



Improved
organizational culture



96%

OF ORGANIZATIONS REPORTED THAT KLC TRAINING CONTRIBUTED TO INCREASED PROGRESS ON ORGANIZATIONAL CHALLENGES.

Our hypothesis is:
Leadership Training +
Culture Change =



**MORE PROGRESS ON
BIGGEST CHALLENGES**



THIRD FLOOR RESEARCH

WANT TO LEARN MORE?

Connect with KLC online at:

kansasleadershipcenter.org | kansasleadershipcenter.org/third-floor-research/



KANSAS
LEADERSHIP
CENTER

Choose the best package for your team.

1. Pathway to Leadership 40

20 community members attend a KLC program. Includes registration and textbooks.

2. Pathway to Leadership 20

20 community members attend a KLC program. Includes registration and textbooks.

3. Case Consultation Workshop in Your Community

Facilitated opportunity to apply the KLC ideas to a shared adaptive challenges (available to groups already experienced with the KLC ideas).

The KLC Path



**STEP 1:
GROW
YOURSELF**

**Your
Leadership
Edge**

**Lead
for Change**

**STEP 2:
MOBILIZE
OTHERS**

**STEP 3:
CREATE
CHANGE**

**Equip
to Lead**