

# Ready to Learn

2019 Kansas Governor's Public Health Conference | April 3, 2019

Ashley Hooper, Director of School Health Services  
ahooper@chcsek.org / 620.240-5061



# Objectives



- ✓ Understand the relationship between health and education
- ✓ Recognize the opportunities and challenges in delivering school-based health services
- ✓ Discuss the impact of school-based health services on children

# Mission



Our mission is to enhance students' academic performance and healthy lifestyle choices by providing medical, dental, behavioral health, and support services.



# Background History of Community Health Center



*“Linking health and education to ensure children are Ready to Learn”*

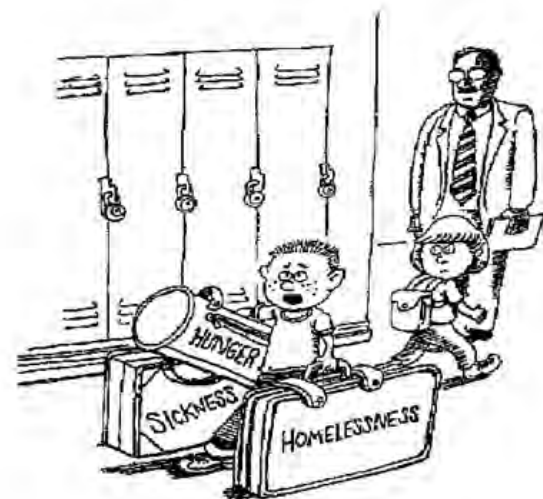
# What are School-Based Health Services?



It is a partnership between schools and community health organization or health care entity guided by families and youth.

Only when we meet our most vulnerable young people where they are...

**“Could someone help me with these?  
I’m late for math class.”**



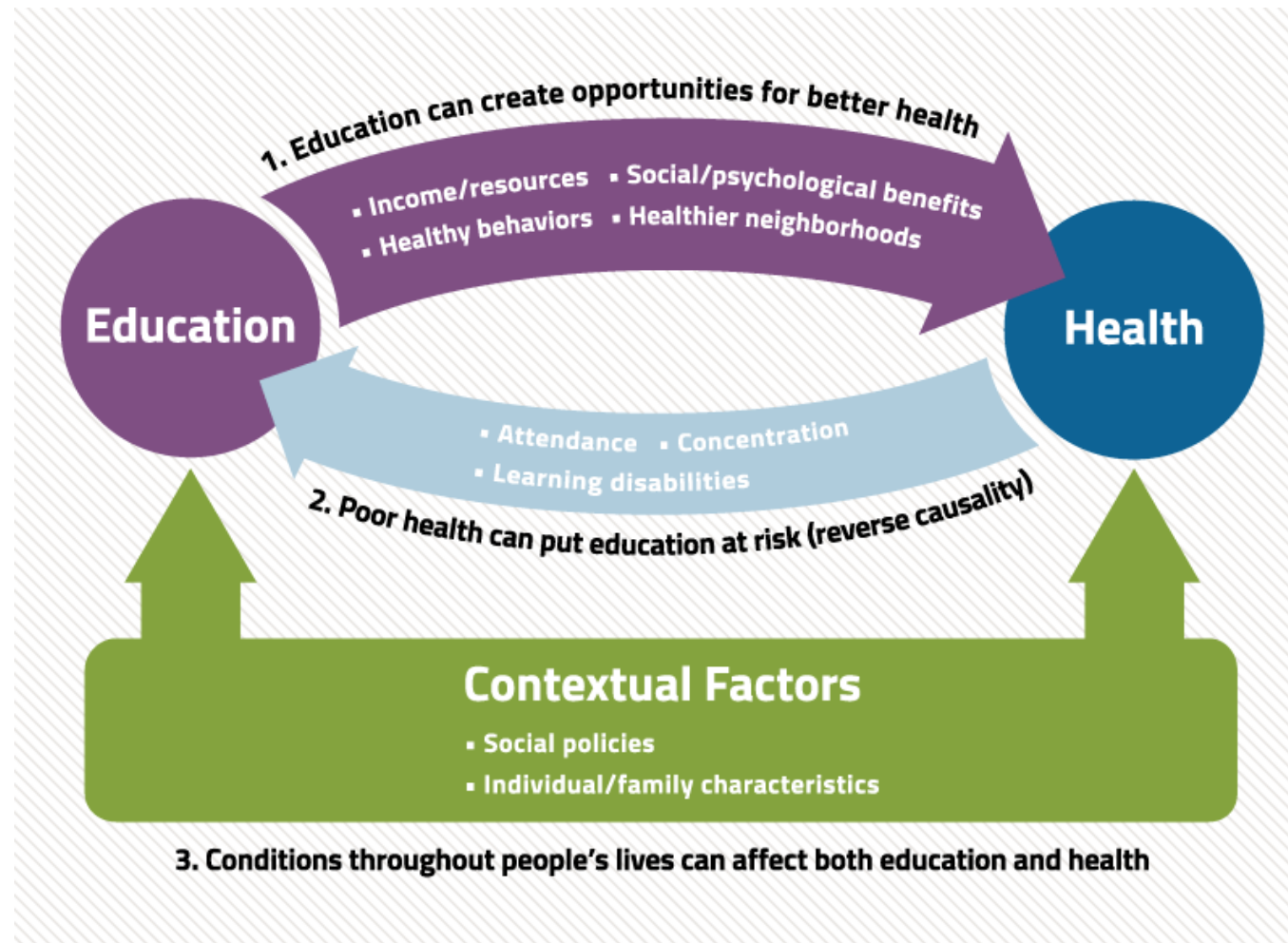
.. Do we afford ALL children the opportunity to thrive

# 3 Key Points on Schools, Health, & Partnerships



- Health organizations and schools share a commitment to children's well being
- Health organizations and schools have different structures and work under different political pressures and laws
- Partnerships aren't easy – Our (CHC/SEK) experience is they take time and require trust and regular meetings

# Need for School-Based Services





# Poverty & Graduation



**A**

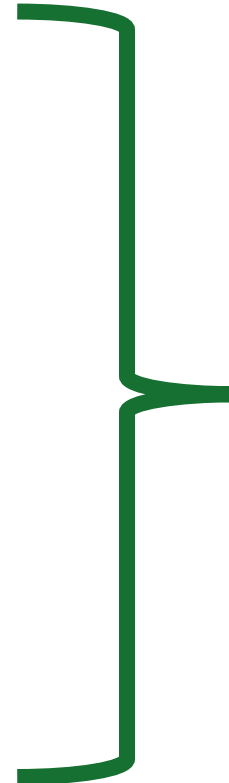
Missing 18 days or  
10% of school  
**ATTENDANCE**

**B**

2 or more mild or serious  
infractions  
**BEHAVIOR**

**C**

Failing a  
**CORE SUBJECT**  
Like English or Math



*Without  
intervention,  
middle school  
students with*

**ONE OR  
MORE  
INDICATORS**  
*only have a*

**25%**

**CHANCE OF  
GRADUATING  
HIGH SCHOOL**

**SUCCESSFUL INTERVENTION... IS KEY TO CHANGING THE ODDS**



# Benefits of School-Based Health Services?



## Remove Access Barriers

School-Based Health Services remove many barriers that limit access to health services for students, families, and educators.

*Including cost, transportation and competing priorities.*



## Long-term Health Outcomes

School-Based Health Services provide high continuity of care for all students.

*Many patients only use SBHC's and SBHS's for their medical, behavioral health, and oral health care.*



## Continuity of Care

School-Based Health Services lead to better health outcomes for students by increasing the frequency of care.

*Students can be "found" much more easily on school grounds!*



## Academic Achievement

School-Based Health Services reduce out of classroom time for students this, improving academic achievement.

*Consider the difference between being out less than 1hr/day vs a half/whole day.*

# District Results



## Coffeyville Public Schools USD 445

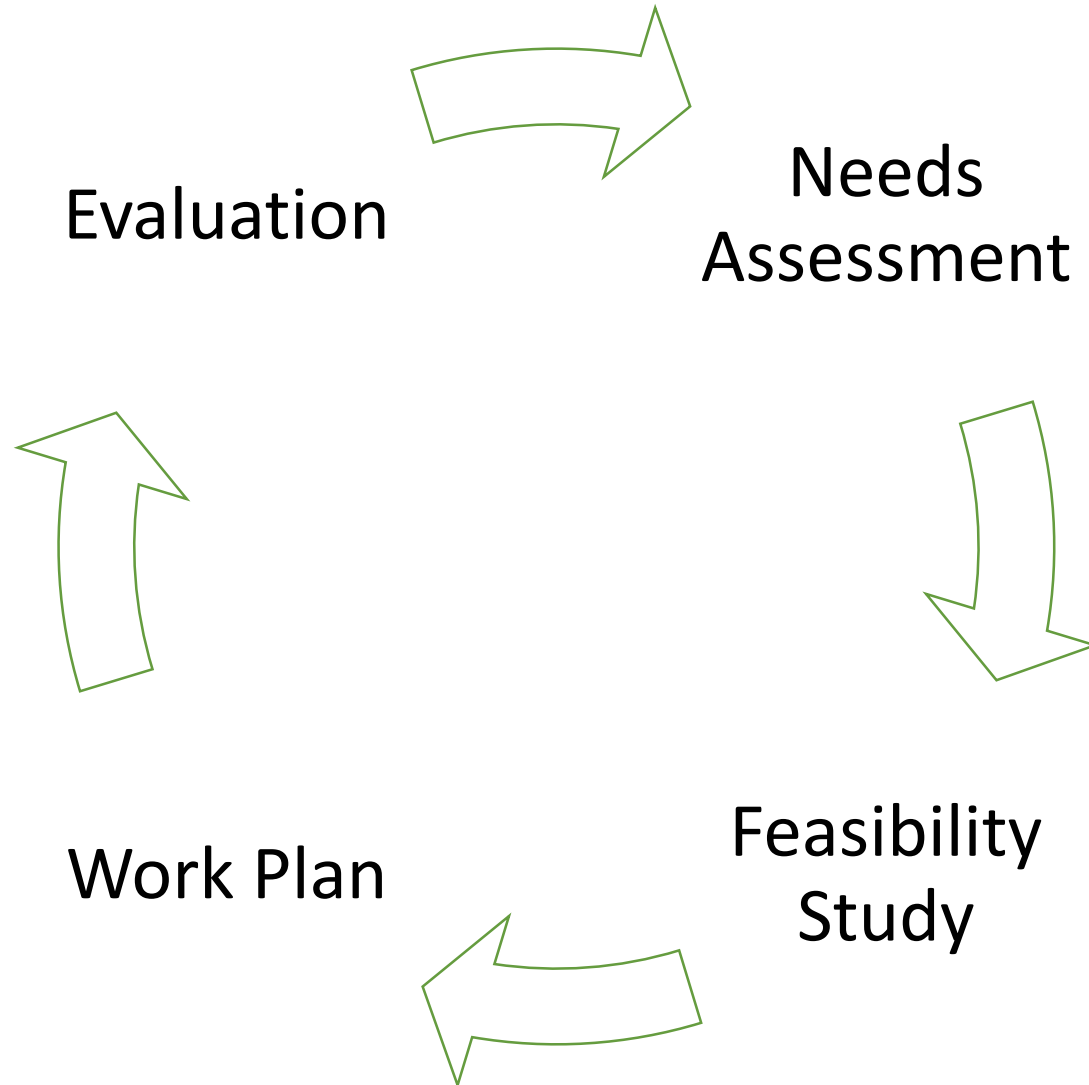
84% Decrease in Unexcused Absences

15% Increase in Excused Absences

55% Decrease in Tardiness

47% Decrease in Behavior Referrals

# Four-Step Planning Method



# Challenges

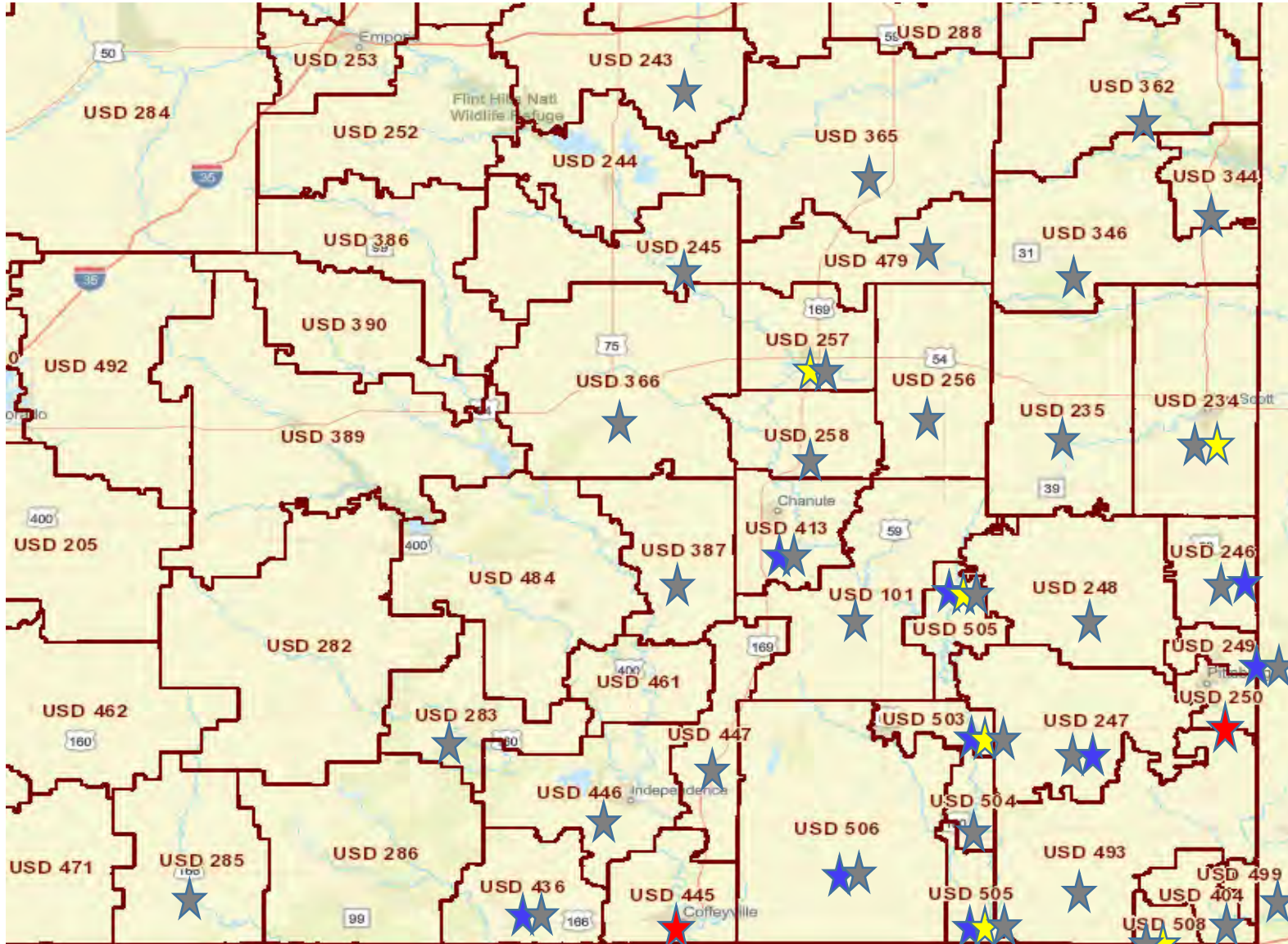


- School Integration
- Funding
- Multi-Agency Planning
- Facility/Space
- Staffing
- Community Partnerships
- Two Systems with Different Drivers





# Where are CHC school-based health services?



- ★ SBHC (all services)
- ★ Behavioral Health
- ★ School Nursing
- ★ Outreach Services (Medical/Oral Health)

# Services Provided



## School-Based Health Centers

- Service coordination
- Medical Services
- Mental Health Services
- Oral Health Services
- Health Education
- Youth Development

### 3 School Health Centers

1 Mobile Clinic (serves K-12)

1 JR/SR High

1 Elementary school

3 new sites in planning

2 school districts

## School Based Behavioral Health

- Promotion of positive social-emotional development
- Behavioral Health Services (*screenings, assessment, diagnosis, and treatment planning, as well as individual and group psychotherapy*)
- Service coordination
- Crisis Response/Conflict Resolution

9 Behavioral Health Therapist

23+ Behavioral health Sites

23 School Districts Crisis Response

4 Recruiting for new districts

## School Health Services

- School Nursing
- Dental Outreach
- Medical Outreach
- State Required Screenings
- Immunizations/Flu Shot Clinics
- Health Education/Training
- Policy, Procedure & Records Review

6 Districts – School Nursing

38 Districts – Dental Outreach

25 Districts – Medical Outreach

11 Districts – Required Screenings

25 Districts – Immunizations



# Return on Investment



- Increased access to quality healthcare
- Improved health outcomes
- Decreased healthcare costs
- Improved school attendance and academic performance



# Who (this is all for)





What questions do you have about School-Based Health Services?

# Wrap-Up



**Thank you for the opportunity to come and speak on School-Based Health Services!**

If you have any additional questions about school-based health services, please contact me.

Ashley Hooper: [ahoop@chcsek.org](mailto:ahoop@chcsek.org) | 620.240.5061