

# WHY HELP ME GROW MATTERS

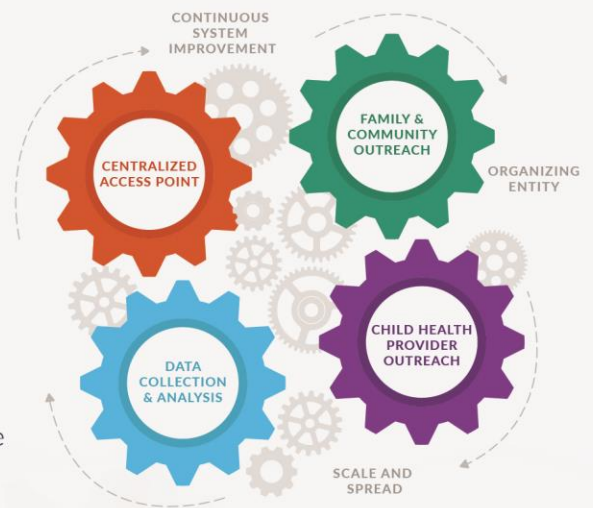
Experts agree: Early detection and connection to services lead to the best outcomes for children with developmental or behavioral challenges.

Early detection is critical for the 12 to 16 percent of all American children who experience developmental or behavioral problems. Families and providers need support in navigating the complex array of community-based services and supports available to promote children's optimal health and wellness.

## HOW HELP ME GROW WORKS

The Help Me Grow system builds on existing resources to ensure communities identify vulnerable children and link families to community-based programs and services through the implementation of four Core Components:

- **Child Health Care Provider Outreach**, providing office-based training to support early detection and intervention, and use of the HMG call center.
- **Family and Community Outreach** promotes HMG, facilitates provider networking, and bolsters children's healthy development through families.
- **A Centralized Access Point** serves as the hub to link children and their families to community based services and supports, while providing seamless care coordination.
- **Ongoing Data Collection and Analysis** helps identify gaps in and barriers to the system, and continuous quality improvement processes refine all aspects of the system.



### THE HELP ME GROW SYSTEM SUPPORTS CHILDREN, FAMILIES, PROVIDERS AND COMMUNITIES IN VITAL WAYS.

Providers and families have the information, resources, and support they need to help their children succeed.

Child health care, early care & education, and human service providers can identify vulnerable children and partner with families to support them.

Public officials and other stakeholders can address gaps in available services and build adequate capacity to meet the needs of children and families.

Communities can see a high rate of return for investments in quality early childhood systems through improved short- and long-term outcomes.

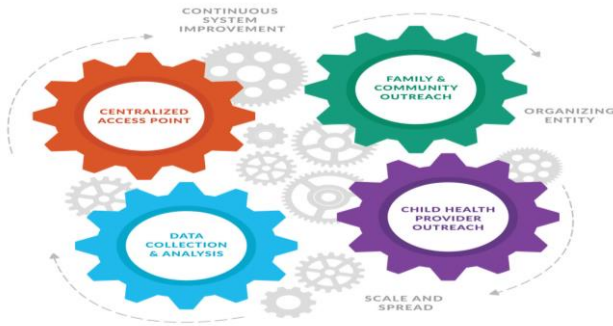


*"One of the most attractive characteristics of Help Me Grow is that it is elegant in its simplicity."*

*-Dr. Paul Dworkin, Founder, Help Me Grow*

Jessica Looze, Ph.D.  
Center for Public Partnerships & Research  
University of Kansas  
785-864-7124  
jlooze@ku.edu  
screenearlystartstrong.org

 **Help Me Grow**  
KANSAS  
An affiliate of the national network



# Core Component Work Groups

## Get Involved...

You are invited to join quarterly virtual work group meetings focusing on each of the four core components.

These groups will be working towards connecting, coordinating, and implementing an effective system at the state and community levels that aligns with the Help Me Grow framework.

Together we will explore materials from the Help Me Grow National Center, talk about key activities, and discuss what the core components might look like in Kansas communities and across the state.

This will be an opportunity to connect with others across the state and engage in this exciting initiative.

## Upcoming Virtual Meetings

Data Collection & Analysis

**Apr 19, 2018** 12:00 PM Central Time

Join from PC, Mac, Linux, iOS or Android:  
<https://kansas.zoom.us/j/689860771>

Centralized Access Point

**Apr 23, 2018** 12:00 PM Central Time

Join from PC, Mac, Linux, iOS or Android:  
<https://kansas.zoom.us/j/566508380>

Family & Community Outreach

**Apr 24, 2018** 12:00 PM Central Time

Join from PC, Mac, Linux, iOS or Android:  
<https://kansas.zoom.us/j/433799818>

Child Health Provider Outreach

**Apr 25, 2018** 12:00 PM Central Time

Join from PC, Mac, Linux, iOS or Android:  
<https://kansas.zoom.us/j/199841590>