

34TH ANNUAL STATEWIDE SUMMER CONFERENCE FOR KANSAS SCHOOL NURSES

STRENGTHENING THE ESSENTIALS: FOUNDATIONS FOR STUDENT HEALTH



NEW NURSE ORIENTATION: JULY 17-18

GENERAL SESSION: JULY 18-20

HYATT REGENCY HOTEL | WICHITA, KS

WELCOME

Dear Colleagues,

On behalf of the conference planning committee, we welcome School Nurse professionals to the 34th Annual Statewide Summer Conference for Kansas School Nurses. We are looking forward to meeting together in person, which will provide an opportunity to renew friendships and allow opportunities to share thoughts and exchange ideas on how to address current student mental and physical health issues.

The conference planning committee, many sponsors, and a wide range of speakers have worked together to plan this event to celebrate our school nursing community.

Building on success of previous conferences, the theme for 2023 is “Strengthening the Essentials: Foundations for Student Health.” The line-up of speakers and educational opportunities have already shaped up to be excellent and the networking opportunities will be indeed outstanding. We are very excited to have three amazing keynote speakers this year, including Gerry Brooks as our closing keynote!

Together we are strong; we will continue to increase our knowledge by strengthening the essentials and building foundations to keep students healthy, safe and ready to learn!

With regard,
The Kansas School Nurse Conference Planning Committee

CONFERENCE PLANNING COMMITTEE

Mary Ann Bauman, BSN, RN, Retired School Nurse
Jana Blank, BSN, RN, School Nurse, Wichita USD 259
Christina Glennen, Assistant Educator, College of Health Professions, Wichita State University
Ronda Hutchinson, BSN, RN, Interim KSNO President, USD 259 Wichita
Kimber Kasitz, BSN, RN, NCSN, KSNO Summer Conference Chair, Director of Health, Homebound & 504 Services, USD 259 Wichita
Tammi Krehbiel, BSN, RN, Hesston USD 460
Krissi Odell, Immunization Nurse Educator, KDHE
Teresa Ryan, USD 500 Kansas City Kansas Public Schools
Holly Steinlage, MPH, RD, LD, Child Nutrition Program Consultant, Kansas State Department of Education
Kelsee Torrez, MPA, Behavioral Health Consultant, Kansas Department of Health and Environment
Lindsay Wallace, RN, Fredonia USD 484

OF SPECIAL NOTE

CONTINUING NURSING EDUCATION

Wichita State University College of Health Professions is approved as a provider of continuing nursing education by the Kansas State Board of Nursing. This course offering is pending approval for contact hours applicable for RN, LPN or LMHT relicensure. Kansas State Board of Nursing provider number: #LT 0090-0327. These course offerings are pending approval for 12.6 contact hours for the New School Nurse Orientation, 15.8 contact hours for the General Session, 3.6 contact hours for the 504 Training and 3.6 contact hours for the SANE/SART Training.

Certificates

Separate contact hours and certificates will be awarded for the New Nurse Orientation and the general session. Certificates will be emailed within 45 days upon completion of the conference evaluation, provided that registration has been paid.

KSNO MEMBERSHIP MEETING & SOCIAL

Tuesday, July 18, 5:00-7:00p | Riverview Ballroom

New this year! The Kansas School Nurses Organization (KSNO) will hold their annual membership meeting & social in the Riverview Ballroom at the Hyatt. Appetizers, water & tea will be available. Feel free to bring your own favorite beverage. Non-members are welcome to attend.

RAFFLE/BASKET AUCTION

A 50/50 raffle and basket auction will be held to raise money for the KSNO Scholarship Fund. Each year a \$750 scholarship is awarded to a nurse pursuing higher education. KSNO is proud to support student health and learning by advancing the 21st century practice of Kansas school nurses. Cash, check and Venmo will be accepted.

CONFERENCE APP

Stay in the know before, during and after the conference with the app. Perfect for networking with other attendees and exhibitors or viewing sessions, speaker information and conference center maps.

More information will be sent out closer to the conference.



ATTIRE

Temperatures may vary greatly in the hotel. Please plan to bring a jacket or sweater.

POST-SESSIONS

CPR RECERTIFICATION

American Heart Association CPR recertification will be offered. Pre-registration is required. Those attending the recertification will receive adult, child, and infant CPR training for health care providers with obstructed airway and AED use.

Session 1: Monday, July 17, 3-5p

Session 2: Tuesday, July 18, 7-9p

Session 3: Thursday, July 20, 1-3p

504 TRAINING

Thursday, July 20, 1-4p

Kimber Kasitz, BSN, RN, Director of Health, Homebound & 504 Services, USD 259 Wichita

This post-session is a must for anyone who wants to understand your legal duties regarding Child Find and Section 504! Kimber Kasitz, Director of Health, Homebound & 504 Services for Wichita Public Schools will provide an overview of Section 504 as a civil rights law and a complete picture of the Section 504 FAPE process. From Child Find to eligibility, to creation of the Section 504 plan to reevaluation. Kimber will cover the gamut. She'll explain how Section 504 fits with regular and special education and illustrate best practices, emphasizing legal compliance. You'll also learn about discipline of students with disabilities and equal participation in extracurricular and nonacademic services.

SANE/SART TRAINING

Thursday, July 20, 1-4p

Trisha Haskell, BSN, RN, SANE-A, SANE-P, Forensic Program Coordinator, HaysMed; Tina Peck, APRN, FNP-BC, SANE-A, SANE-P, Founder/Executive Director, Hope Medical Forensic Services, LLC; Diana Schunn, BSN, RN, SANE-A, SANE-P, Executive Director, Child Advocacy Center of Sedgwick County; Beth Rinehart, LMSW, Assistant Family Services Manager, Child Advocacy Center of Sedgwick County; and Lt. Tom Fatkin, EMCU Commander, Wichita Police Department

This session will update KS School nurses on evidence-based practice guidelines related to students with suspected or reported sexual or physical abuse. This will include the role of school nurses for reporting; establishing collaboration with law enforcement, advocates, and forensic nurses; policies for reporting per state guidelines; and training opportunities in KS to improve identification of students.



JOIN US AT THE RIVERFRONT STADIUM

For 2023, the KSN Conference is bringing back its evening social event. This event is complimentary for attendees!

Walk, bike or drive over to the Riverfront Stadium for an evening of fun and networking! Heavy hors d'oeuvres will be served in the Fidelity Bank Bravely Onward Club.

Attendees can also take a tour the stadium or visit the Wichita Baseball Museum. The museum features trivia and historical artifacts showcasing Wichita's baseball history, including Wichita's all-black baseball team the Monrovia's, the National Baseball Congress (NBC), along with preserved components of Lawrence-Dumont Stadium.

WEDNESDAY, JULY 19 | 6-8P

275 S MCLEAN BLVD, WICHITA, KS 67213



National
Association of
School Nurses

TOGETHER, SCHOOL NURSES ARE STRONGER



Scan the QR Code to
Learn More and Join Now



STAY CURRENT

- Keep up to date on the latest school nursing practice and clinical research with *The Journal of School Nursing* and *NASN School Nurse*.
- Get the latest school health news, newly released resources, and upcoming events at your fingertips with NASN Weekly Digest and the members-only *Quarterly Connection* e-newsletters.
- Access online courses and other e-learning programs specifically for school nurses to earn NCPD contact hours. All courses 2 hours or less are free for members, others discounted.
- Take advantage of educational scholarships to help you meet your continuing education goals.

SUPPORT CONNECTIONS

- Ask questions and receive instant feedback and support from thousands of school nurse peers in NASN's trusted and professional online space, the All Member Forum.
- Network and learn the newest trends and techniques in school nursing with fellow school nurses at the national and state level at NASN's Annual Conference, offering both virtual and in-person events and state (affiliate) conferences while benefiting from member discounts.
- Access a simple and convenient way to connect with others in NASN's online communities through the Connected Community mobile app.



STRENGTH IN COMMUNITY

- Join other school nurses in similar practice settings with NASN's special interest groups (SIGs); share knowledge and experiences in SIG online communities and meet up at the annual conference to deepen professional relationships.
- Take advantage of combined or unified membership with NASN and your NASN state affiliate and gain access to state-specific online communities, newsletters, and resources.
- Receive gift certificates for free vision care to share with students who qualify through the NASN and VSP Vision™ Eyes of Hope® partnership.

"I have done so many [online courses] . . . The membership has by far paid for itself!"

~ Cheri Williams
New Mexico



LEARN MORE AND JOIN NOW

Join nearly 18,000 school nurses who are NASN members already. **Together we are NASN Strong.**

NASN's vision is that all students are healthy, safe and ready to learn.

NASN's mission is to optimize student health and learning by advancing the practice of school nursing.

NASN
1100 Wayne Ave, Suite #925
Silver Spring, MD 20910
240-821-1130

NEW SCHOOL NURSE ORIENTATION

ABOUT

New School Nurse Orientation provides a comprehensive overview of policies and procedures in school health. The sessions bring together a faculty of seasoned school nurses and other state experts who share knowledge, expertise, and evidence-based practice in the following areas: communicable disease, immunizations, medication administration, and managing chronic health conditions at school.

Speakers discuss the importance of school health as an essential component of the academic curriculum and its importance in student achievement. As a participant, you will learn about your role and legal responsibilities within the framework of the Kansas Nurse Practice Act as well as the Scope and Standards of School Nurse Practice.

OBJECTIVES

- Integrate evidence-based nursing practice in an interdisciplinary Kansas education structure.
- Locate laws and standards impacting school health programs and the school nurse.
- Discuss the development and implementation of policies and procedures.
- Describe the role of the school nurse in identifying, reporting, and preventing communicable diseases in the school setting.
- Examine the current immunization schedule with application to school health.
- Define delegation and implications to nursing practice in the school setting.
- Identify day to day school nursing planning and management strategies.
- Differentiate the purpose and requirements for the various plans of care for students that include health care plans, Section 504 Plans, and Special Education Plans.
- Describe the value of effective communication and collaboration to enhance student and family capacity for adaptation, self-management, self-advocacy, and learning.

NEW SCHOOL NURSE AGENDA

MONDAY, JULY 17

7:00 REGISTRATION AND CONTINENTAL BREAKFAST

8:00 **WELCOME** | Ronda Hutchinson, BSN, RN, KSNO President, USD 259 Wichita

8:15 **KANSAS STATUTES, REGULATIONS, POLICIES & PROCEDURES: SETTING PARAMETERS FOR SCHOOL NURSE PRACTICE** | Ronda Hutchinson, BSN, RN, KSNO President, USD 259 Wichita

9:30 BREAK

9:45 **MEDICATION AND DELEGATION IN THE SCHOOL SETTING** | Kimber Kasitz, BSN, RN, Director of Health, Homebound & 504 Services, USD 259 Wichita

11:45 LUNCH

12:45 **DISEASE REPORTING AND VACCINE-PREVENTABLE DISEASE (VPD) CASE AND OUTBREAK INVESTIGATIONS: THE ROLE OF THE SCHOOL NURSE** | Kansas Department of Health and Environment

1:45 **IMMUNIZATIONS: THE ROLE OF THE SCHOOL NURSE** | Krissi Odell, Immunization Nurse Educator, KDHE

2:45 BREAK

3:00 **LAWS THAT DEFINE AND GUIDE SCHOOL NURSE PRACTICE** | Paula Bunde, USD 512 Shawnee Mission

4:30 **WRAP UP Q&A**

5:00 NEW SCHOOL NURSE ORIENTATION DAY ONE ADJOURN

TUESDAY, JULY 18

7:00 CONTINENTAL BREAKFAST

7:45 **WELCOME** | Ronda Hutchinson, BSN, RN KSNO President, USD 259 Wichita

8:00 **MANAGING CHRONIC HEALTH CONDITIONS AT SCHOOL** | Ronda Hutchinson, BSN, RN, KSNO President, USD 259 Wichita

9:30 BREAK

9:45 **SCHOOL NURSING PLANNING AND MANAGEMENT: A WALK THROUGH THE SCHOOL YEAR** | Angela Anderson, RN, BSN, MS. Ed, USD 457 Garden City, KSNO Member at Large

11:15 **WRAP UP Q&A**

11:30 NEW SCHOOL NURSE ORIENTATION ADJOURN

GENERAL SESSION

ABOUT

School health professionals are in unique positions to affect change in their school population, community and within themselves using knowledge and expertise in assessment and health planning to build relationships, collaborate with students, families, and other disciplines to lead change in the health and education of the future of our students. Presenters will engage participants in recognizing the opportunities and strategies to provide a continuum of care for school health professionals to begin collaborating for the 2023-2024 school year.

OBJECTIVES

- Recognize and identify events that occur in the daily life of students that can affect attendance and performance in their daily lives.
- Identify potential threats to health and safety in the school setting and the strategies to employ, prepare, mitigate and respond to preserve the physical and emotional well-being of schools and the community.
- Recognize how attitude and approach to challenges positively or negatively affect school students and staff in their daily lives.
- Identify the role of the school health professionals in the surveillance, prevention, and management of chronic, acute, and infectious diseases.
- Review common health conditions in pediatric and adolescent populations and strategies for responding and managing chronic and urgent health needs with health care and education partners.
- Compare current personal and professional school health professional practices with evidence-based practices to design a plan to incorporate interdisciplinary partners in improving health and education outcomes for school populations and communities.

GENERAL SESSION AGENDA

MONDAY, JULY 17

12-4p GENERAL CONFERENCE REGISTRATION OPEN

3-5p CPR RECERTIFICATION SESSION 1

TUESDAY, JULY 18

10:00 GENERAL CONFERENCE REGISTRATION OPEN

10:00 EXHIBITS OPEN

12:00 OPENING LUNCH

12:20 CONFERENCE WELCOME, LEGISLATIVE UPDATE, IMMUNIZE KANSAS COALITION AND AWARDS

1:30 KEYNOTE PRESENTATION | JASON BOSCH

3:00 BREAK & VISIT EXHIBITS

3:30 BREAKOUT SESSIONS BLOCK 1

LGBTQIA+ Cultural Competency: Best Practices for Working with LGBTQIA+ Youth and Families	Epidemiology of Tick-borne diseases and Rabies in Kansas	Addressing Obesity in Rural Elementary Schools Partnering with Clinics: the iAmHealthy Parents First Program	Diabetes Tech in the School Setting	Activity and Weight Management - Children and Adolescence Diabetes	An Overview of Electronic Health Record Systems
---	--	---	-------------------------------------	--	---

5:00 DAY ONE ADJOURN

5-7p KSNO MEMBERSHIP MEETING & SOCIAL

7-9p CPR RECERTIFICATION SESSION 2

GENERAL SESSION AGENDA

WEDNESDAY, JULY 19

7:30 BREAKFAST BUFFET

8:00 EXHIBITS OPEN

8:30 BREAKOUT SESSIONS BLOCK 2

Understanding the Brain	Kansas Overdose Prevention and Naloxone Administration	It's Not Water Vapor: Addressing E-cigarette Use in Schools Using a Multi-level Approach	Diabetes Tech in the School Setting (repeat)	Legislative Advocacy 101- Stepping Up Your Game!	All Things CPR
-------------------------	--	--	--	--	----------------

10:00 BREAK & VISIT EXHIBITS

10:30 BREAKOUT SESSIONS BLOCK 3

Understanding the Brain (repeat)	How to use KSWebIZ School Module and Utilize Reports	Kansas Overdose Prevention and Naloxone Administration (repeat)	Growing Up is Hard, How Can You Help?	Trauma and Our Kids	Meal Modifications in School Nutrition Programs
----------------------------------	--	---	---------------------------------------	---------------------	---

12:00 LUNCH

1:30 BREAKOUT SESSIONS BLOCK 4

Child Abuse and Neglect: Recognition, Reporting and Supporting	How to use KSWebIZ School Module and Utilize Reports (Repeat)	The Eyes and Vision in School	Supporting Complex Medical Conditions in School Health	National School Health Data Set: Every Student Counts!
--	---	-------------------------------	--	--

3:00 BREAK

3:30 BREAKOUT SESSIONS BLOCK 5

LGBTQIA+ Cultural Competency: Best Practices for Working with LGBTQIA+ Youth and Families (repeat)	Addressing Obesity in Rural Elementary Schools Partnering with Clinics: the iAmHealthy Parents First Program (repeat)	Growing Up is Hard, How Can You Help? (repeat)	Supporting Complex Medical Conditions in School Health (repeat)	Activity and Weight Management - Children and Adolescence Diabetes (repeat)	Everything You Wanted to Know about SNAP Health Center
--	---	--	---	---	--

5:00 DAY TWO ADJOURN

6-8p SOCIAL EVENT

GENERAL SESSION AGENDA

THURSDAY, JULY 20

7:30 BREAKFAST BUFFET

8:30 KEYNOTE PRESENTATION | DR. JOAN DUWVE

10:00 BREAK

10:30 KEYNOTE PRESENTATION | GERRY BROOKS

12:00 CONFERENCE ADJOURN

1-3p CPR RECERTIFICATION SESSION 3

1-4p 504 TRAINING POST-SESSION

1-4p SANE/SART TRAINING POST-SESSION

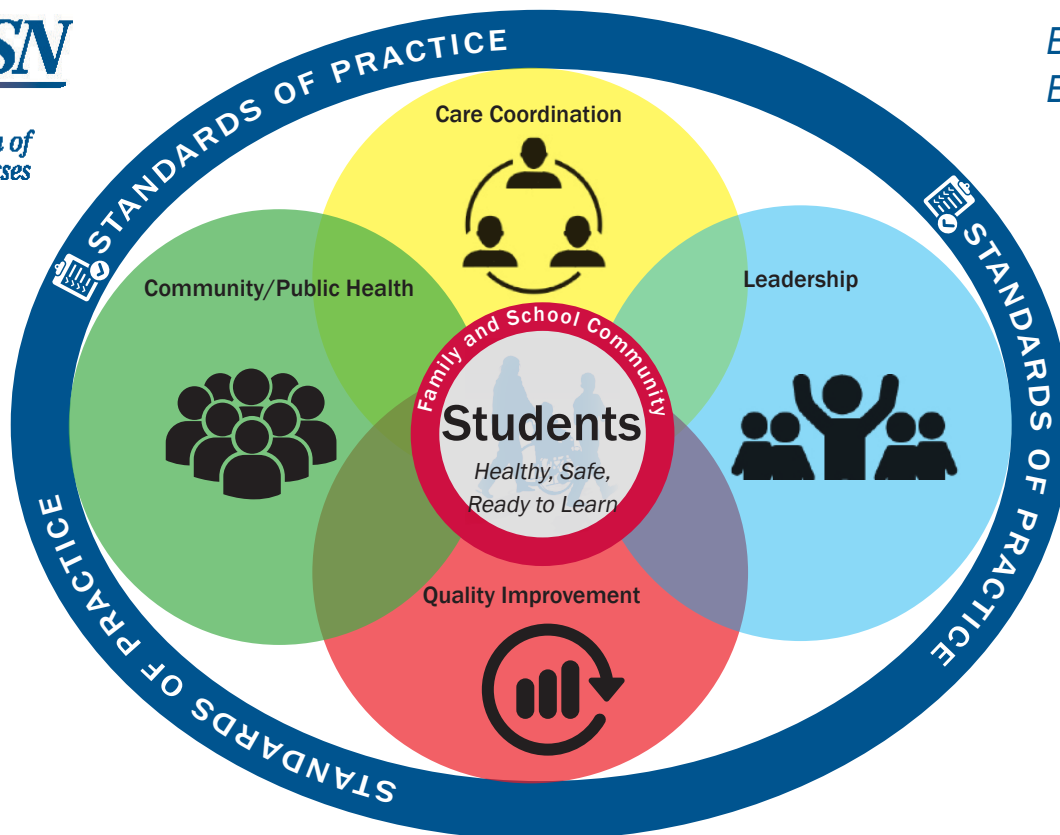
*Schedule subject to change



Framework for 21st Century School Nursing Practice™



BETTER HEALTH.
BETTER LEARNING.™



NASN's *Framework for 21st Century School Nursing Practice™* (the *Framework*) provides structure and focus for the key principles and components of current day, evidence-based school nursing practice. It is aligned with the Whole School, Whole Community, Whole Child model that calls for a collaborative approach to learning and health (ASCD & CDC, 2014). Central to the *Framework* is student-centered nursing care that occurs within the context of the students' family and school community. Surrounding the students, family, and school community are the non-hierarchical, overlapping key principles of *Care Coordination*, *Leadership*, *Quality Improvement*, and *Community/Public Health*. These principles are surrounded by the fifth principle, *Standards of Practice*, which is foundational for evidence-based, clinically competent, quality care. School nurses daily use the skills outlined in the practice components of each principle to help students be healthy, safe, and ready to learn.

Standards of Practice <ul style="list-style-type: none"> Clinical Competence Clinical Guidelines Code of Ethics Critical Thinking Evidence-based Practice NASN Position Statements Nurse Practice Acts Scope and Standards of Practice 	Care Coordination <ul style="list-style-type: none"> Case Management Chronic Disease Management Collaborative Communication Direct Care Education Interdisciplinary Teams Motivational Interviewing/ Counseling Nursing Delegation Student Care Plans Student-centered Care Student Self-empowerment Transition Planning 	Leadership <ul style="list-style-type: none"> Advocacy Change Agents Education Reform Funding and Reimbursement Healthcare Reform Lifelong Learner Models of Practice Technology Policy Development and Implementation Professionalism Systems-level Leadership 	Quality Improvement <ul style="list-style-type: none"> Continuous Quality Improvement Documentation/Data Collection Evaluation Meaningful Health/ Academic Outcomes Performance Appraisal Research Uniform Data Set 	Community/ Public Health <ul style="list-style-type: none"> Access to Care Cultural Competency Disease Prevention Environmental Health Health Education Health Equity Healthy People 2020 Health Promotion Outreach Population-based Care Risk Reduction Screenings/Referral/ Follow-up Social Determinants of Health Surveillance
---	---	---	---	---

ASCD & CDC. (2014). *Whole school whole community whole child: A collaborative approach to learning and health*. Retrieved from <http://www.ascd.org/ASCD/pdf/siteASCD/publications/wholechild/wscc-a-collaborative-approach.pdf>

KEYNOTE SPEAKERS



JASON BOSCH

EdD. | Founder & Owner, Elevate Agency LLC; Assistant Dean for Student Success, College of Engineering, Wichita State University

Dr. Jason Bosch has nearly two decades of experience activating learning and development in education, business, nonprofit, governmental, and community organization settings. He currently serves as the Assistant Dean for Student Success in the College of Engineering at Wichita State University. In this role, he provides leadership and strategic direction for the Engineering Student Success Center. He is the founder and owner of Elevate Agency, LLC, a company that helps individuals and organizations build their capacity to lead through leadership coaching and training, team development, and strategic planning. Jason previously served as an associate with the Wichita State University Community Engagement Institute's Center for Organizational Development, where he supported strategic planning, leadership training, and other organizational development initiatives. Jason has a bachelor's degree in sociology, master's degree in higher education leadership, and doctoral degree in educational leadership. He holds certifications in leadership coaching and advanced leadership development from the Kansas Leadership Center.

You CAN Lead!

Tuesday, July 18 | 1:30p ■■■

Session Description: When facing tough challenges in our organizations and communities, people tend to look to authority figures or experts to solve our problems. Often, however, authority and expertise alone are insufficient for making progress on the tough issues we care about. We all have the opportunity to exercise leadership on these challenges! In fact, leadership is required from all stakeholders involved in or impacted by the challenge if we want to make progress toward solving it. In this session, we will explore how to engage ourselves and others to tackle the issues we care most about. Participants will leave with a few "first steps" for leading more effectively from whatever positions they hold within their organizations.



DR. JOAN DUWVE

MD, MPH | State Health Officer, KDHE

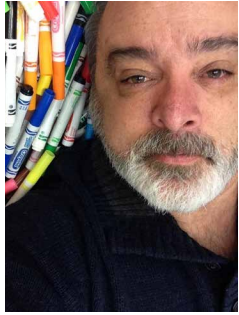
Joan Duwve is the State Health Officer for the Kansas Department of Health and Environment. Duwve joined KDHE in Nov. 2020 to lead the COVID-19 Unified Testing Strategy before moving into the Deputy State Health Officer position in July 2021. Prior to her roles at KDHE, Duwve spent 12 years in various public health leadership roles in South Carolina and Indiana. While at the South Carolina Department of Health and Environment Control, Duwve worked to elevate the health equity program and hire a director of diversity, equity and inclusion. She also spent 11 years practicing as a family medicine physician. Duwve completed her medical degree at Johns Hopkins University. She also holds a Master of Public Health from the University of Michigan and Bachelor of Arts degree in International Studies from the Ohio State University. She has served on the CDC National Center for Injury Prevention and Control Board of Scientific Counselors, a National Academy of Science, Engineering and Medicine Evaluation Committee and the Association of State and Territorial Health Officials Board of Directors and Infectious Diseases Policy Committee.

State of the State: Status of the Opioid Epidemic in Kansas

Thursday, July 20 | 8:30a ■■■

Session Description: In this session, Dr. Duwve will discuss the status of the opioid epidemic in Kansas, and what we can all do to help.

KEYNOTE SPEAKERS



GERRY BROOKS

MA | Elementary School Principal, Lexington, KY

Gerry Brooks has been an educator for 25 years, beginning as a third-grade teacher in Palm Bay, FL. He earned his master's in administration and has been an elementary principal for 12 years. Originally using humorous videos to encourage his staff, Gerry has become a national encourager for teachers through social media and speaking events. He is a voice for teachers, but his passion is leading others to be responsible for their own personal climate and culture in the workplace. His book, "Go See the Principal," outlines strategies for taking on this responsibility. Gerry and his wife, Kelly, have 3 adult children and live in Lexington, KY.

Personal, Climate, and Culture: The Choice is Yours

Thursday, July 20 | 10:30a

Session Description: This session will focus on being the best you can be no matter what position you hold. We will look at how to deal with colleagues, parents, and students and best interact with those people on a daily basis.



BREAKOUT SESSIONS

Activity and Weight Management - Children and Adolescence Diabetes

Diane Greenleaf-Kisner, RD, LD, CDCES, Registered Dietitian, Healthy Green Nutrition LLC

School nurses help manage students with diabetes. Type 1 and Type 2 Diabetes diagnosis are on the rise in children and adolescents. Many questions come up about what diet is best for treating diabetes. This talk will review the pros and cons of different diets students with diabetes are trying. The importance of activity will be discussed and how those with diabetes can do this safely. With the education about activity and weight management, school nurses can help educate students, parents, caregivers and coaches.

Addressing Obesity in Rural Elementary Schools Partnering with Clinics: the iAmHealthy Parents First Program

Chris Tuck, RN, Former School Nurse, iAmHealthy Parents First Consultant, University of Kansas Medical Center; Barbara Polivka, PhD, RN, FAAN, Associate Dean for Research and Professor at the University of Kansas School of Nursing, University of Kansas Medical Center; Megan Olalde, MS, RD, CCRP, Clinical Research Coordinator, University of Kansas Medical Center

The prevalence and incidence of pediatric obesity in the United States remains a critical public health concern. Childhood obesity poses significant short- and long-term health consequences, including elevated morbidity and mortality from cardiovascular disease, diabetes, and cancer. Children in rural areas are disproportionately affected by obesity and its negative health consequences, with up to 50% higher odds of being obese compared to urban children. Children and families from rural areas are less likely to have access to treatment services. The iAmHealthy Parents First program is one of the first of its kind because it utilizes rural schools and clinics in the same town to reach children and parents with overweight or obesity. This program is delivered over Zoom, so families can join from the convenience of their home. The parents and their children learn about healthy lifestyle skills that can help adults with weight loss and kids achieve a healthy weight. We will share practical advice that positively impacts health behaviors, such as goal setting, utilizing apps and websites for behavior change, and a categorization technique to deter against foods high in sugar and fat. We will also provide examples for how elementary school nurses have worked with their local clinics to improve their students' health.

All Things CPR

Lorri Greenlee, BSN, MCHL, RN, Retired Coordinator of Health Services, USD 465 Winfield

Learn all of the components of a successful CPR program in the school setting. We will cover who needs CPR (which staff, high school graduation requirements, health career students, etc), provider options (AHA, Red Cross, etc), what equipment is needed (manikins, AED trainers, etc) and other assorted details. Obtaining funding for equipment, course fees, will be included. A variety of CPR manikins will be available for participants to 'test drive'. CPR for Schools kit will also be available. Project Adam, a Heart Safe program for schools, will also be explored. The local interagency cardiac initiative that is currently being developed in Winfield will also be explored. USD 465 is working towards being a cardiac friendly district and community. Come learn from our successes and mistakes, expect to laugh at some of our experiences. This session has something for everyone.

An Overview of Electronic Health Record Systems

Doris Thayer, RN, Nursing Informatics, PSNI; Christine Drucker, MBA, Sr. Strategic Account Executive, PSNI

During this session, nurses will learn the key features and benefits of an electronic health record. Attendees will be able to identify the major differences between a student information system (SIS) with a health module and a true electronic health record (EHR). With this knowledge, nurses can build a business case for an EHR – presenting to the school administration. Attendees will learn the functionality of a true EHR, including student health records, and how an EHR supports efficiency and accurately for daily encounters, such as health screenings, medication and treatment administrations, and injury/illness walk-in visits.

Child Abuse and Neglect: Recognition, Reporting and Supporting

Rachelle Soden, MS, Training Manager, Kansas Children's Service League; Adrienne Ralston, MA, Training Specialist, Kansas Children's Service League

School health services personnel are considered mandated reporters by Kansas statute. This training will provide an overview of the common indicators in the categories of abuse and neglect, discuss the differences between poverty and neglect and inform the audience of the perspective shift occurring in Kansas, which is moving our lens from not just a level of surveillance in being a mandated reporter, but also considering how our role is supporting families and how we can be empowered to help a family before things rise to the level of needing a report and how to continue to support once a report has been made.

Diabetes Tech in the School Setting ■ ■ ■

Ryan McDonough, DO, FAAP, Pediatric Endocrinologist,
Children's Mercy - Kansas City

In this interactive session, we will provide a brief update on the basic pathophysiology of diabetes in the pediatric population. Then, we will review the current and upcoming technologies and treatments for managing diabetes.

Epidemiology of Tick-borne diseases and Rabies in Kansas ■ ■ ■

Stephanie Lindemann, MPH, Advanced Epidemiologist,
Kansas Department of Health and Environment

Some diseases like Lyme disease and Rocky Mountain spotted fever are spread from animals to humans through the bite of an infected tick. Ticks may be found on playgrounds, sports fields, school yards or other outdoor areas on school grounds. This presentation will provide an overview of the tick-species and tick-borne diseases most commonly seen in Kansas and the role school nurses can play in preventing tick-borne diseases in students, families and staff. In addition to ticks and tick-borne diseases, wild animals or unattended animals on school grounds are of concern for potential exposures to rabies. Rabies is usually spread from animals to humans from the bite of a rabid animal, but other circumstances may be considered exposures to rabies, especially those involving bats. This presentation will also provide background information on the rabies virus, how it is spread and how school nurses can help protect people and pets from rabies.

Everything You Wanted to Know about SNAP Health Center ■ ■ ■

Doris Thayer, RN, Nursing Informatics, PSNI; Christine Drucker, MBA, Sr. Strategic Account Executive, PSNI

During this session, nurses will learn SNAP Tips and Tricks- even SNAP veterans will learn something new! Presenters will share shortcuts and features that will improve data collection and save nurses time. Attendees will recognize ways to use data to validate the role of the school nurse, identify students at risk, and monitor the health of the school/district population. Nurses will learn how SNAP Add-On Modules increase productivity, save time, and improve communication. This will include an overview of the SNAP Health Portal for Parents and Staff, and links to WebIZ for vaccine retrieval and Greenbush for Medicaid Billing.

Growing Up is Hard, How Can You Help? ■ ■ ■

Terri Moses, MS, Division Director of Safety and Environmental Services, Wichita Public Schools;
Stephanie Quick, ME, Supervisor, Safety Services Department, Wichita Public Schools

Adolescence is a time full of changes. Young people today are bombarded with multiple issues including peer relations, social issues such as bullying and drug use, ever present social media and concerns about the impact of local and national events on school safety. In addition, adolescence is the stage when mental health disorders may first appear. This presentation will provide school nurses, administrations and other school personnel information on current youth trends and common mental health disorders. Participants will have an opportunity to problem solve various scenarios to answer the question, "How Can You Help?" Participants will be provided with a variety of resources.

How to use KSWebIZ School Module and Utilize Reports ■ ■ ■

Tom Liddy, AAS, Assistant IIS Manager & Help Desk Coordinator, KDHE; Kylee St. Onge, KSWebIZ Technician, KDHE

In this presentation, we discuss the KSWebIZ School Nurse Module. This presentation will demonstrate the deference between the School Nurse Module and the full KSWebIZ version and will explain why school nurses would use one version over the other. Various reports will be demonstrated as well as tips to help determine what reports will be most useful to a school nurse.

It's Not Water Vapor - Addressing E-cigarette Use in Schools Using a Multi-level Approach ■ ■ ■

Bryce Chitanavong, BHS, Youth Tobacco Prevention Coordinator, Kansas Department of Health and Environment; Mary Alice Kelly, BSN, RN, School Nurse, Shawnee Mission North School District

Youth e-cigarette use is an epidemic in the U.S. Join us to hear lessons learned from a ground-breaking approach to applying the Project ECHO model to maximize access to expert advice concerning e-cigarette prevention and cessation and engage program participants and a network of stakeholders committed to reducing e-cigarette use in schools. During this presentation, the speakers will provide an overview of the ECHO model and describe the criteria established for the program and its participants. The presentation will provide a unique perspective from educators on the pilot program's quality, effectiveness, and impact. Results from the pilot will be valuable for conference participants looking for effective ways to collaborate and develop a statewide initiative in their state to equip critical personnel to address e-cigarette use among school-aged students using the new tools and techniques learned during this presentation.

Kansas Overdose Prevention and Naloxone

Administration

Daniel Donovan, *Prevention Specialist, DCCCA*

As the opioid overdose epidemic burns through Kansas communities, the growing impact on students and schools is evident. Access to counterfeit prescription opioids combined with low public education surrounding the risks of fentanyl poisoning is killing students and devastating schools. Students in Kansas have overdosed and died both in and out of schools. School nurses play an important role in student health and safety, but are starting to take on a new role they may not have expected; first responder. In response to the fentanyl crisis, school administrators and nurses have begun requesting naloxone training to enable them to respond when an opioid overdose occurs in the schools. Anywhere high risk students or families are present, the risk of overdoses at a school exist. High school students are at the highest risk, but as the problem grows, it will filter down into middle schools. School nurses have the unique opportunity to support every level of elementary and secondary education by being prepared and capable of responding to an overdose. They can ensure all staff and administrators have naloxone on hand and are prepared to recognize and respond to opioid overdoses. This presentation will ensure all school nurses know how to access and store naloxone, and ensure their district policy affords them the freedom to administer naloxone.

Legislative Advocacy 101- Stepping Up Your Game!

Ronda Hutchinson, *BSN, RN, Board of Directors- State Representative, Kansas School Nurses Organization and National Association of School Nurses; Kimberly Martin*, *MSEd, RN, BSN, KSNO Legislative Chair, Kansas School Nurses Organization*

You're getting the hang of school nursing. What's next? Learn how you can charge your advocacy and legislative battery. Your school nursing expertise along with a few legislative tools can help advance your values as they pertain to the nursing profession as well as helping keep students safe, healthy and ready to learn. Entering the political advocacy world can be intimidating, but it doesn't have to be. Knowledge is power.

LGBTQIA+ Cultural Competency: Best Practices for Working with LGBTQIA+ Youth and Families

Adrienne Ralston, *M.A., Community Psychology, Training Specialist, Kansas Children's Service League*

Being culturally competent means learning new patterns of behaviors, research trends and social cues of a specific community and then effectively applying them into our personal and professional lives. This workshop will cover the experiences, values and belief systems specific to LGBTQ+ youth and their families. Participants will gain a heightened sense of personal awareness to encourage a safe and positive environment for sexual and gender minorities in your communities.

Meal Modifications in School Nutrition Programs

Lynette Osner, *Registered Dietitian, Child Nutrition Consultant, Kansas State Department of Education*

United States Department of Agriculture (USDA) School Nutrition Programs, such as the School Breakfast Program and the National School Lunch Program, are operated in every public school and many private schools in Kansas. In many schools, the school nurse plays a key role in the operation of these federal programs by coordinating meal modifications for students with special dietary needs. This training will cover the legal requirements of providing meal modifications in School Nutrition Programs and the steps school professionals must take to provide meal modifications within all federal and state regulations. Specific examples and scenario situations will be discussed, such as the steps to take if a student has a lactose intolerance. The training will also provide information on collaborating with an interdisciplinary team to make meal modification decisions and ensure a safe environment for all students with special dietary needs. School nurses will leave the training with the guidance and resources necessary to address a variety of meal modifications with confidence, knowing they can meet the needs of their students while also meeting all federal and state regulations.

National School Health Data Set: Every Student Counts!

Erin Winger, *RN, KSNO Data Chair*

This session will cover yearly data collection efforts by KSNO and NASN. We will dive into the standardized definitions, our reasons "why", timelines for collection and submission, goals for Kansas School Nurses, and demonstration of how the Every Student Counts! reporting platform works. Participants new to School Nursing or to this reporting effort will be able to gather a sense of how data collection can truly guide their daily practice and advocacy for student health efforts.

Supporting Complex Medical Conditions in School Health

Elizabeth Noble, *BSN, RN, NCSN, School Nurse, USD 259 Wichita*

Supporting students with specialized health care needs related to gastrostomy buttons and tracheostomy tubes can be a challenge for even an experienced school nurse. Today's students can have complex, chronic medical needs that require extensive support, training and specialized knowledge. This session will offer practical information and hands-on practice for school nurses with skills related to gastrostomy tubes and tracheostomy tubes. We will discuss considerations for emergency action plans and delegation related to students with specialized health care needs in the school setting.

The Eyes and Vision in School

Stacy Clark, OD, Optometrist, Drs. Driver & Clark, PA

The session will be a broad discussion of the management of eye or vision conditions of students. We will be diving into vision and eye terminology, vision demands in the classroom, visual impairments and how to manage red eyes and eye injuries of students. We will also review school based vision screenings, new guidelines and the updated Kansas Statutes regarding school based vision screenings (2021). Resources for comprehensive vision/eye examinations and materials will be provided.

Trauma and Our Kids

Kelly Bradford, LSCSW LCAC, Assistant Clinical Director, Four County Mental Health Center

Did you know that at least 1 in 7 children will experience some type of trauma this year? Trauma has a pervasive impact on youth, ultimately altering the way brains function. I will teach a working definition of trauma and give some tools to help nurses practice in a trauma-informed way.

Understanding the Brain

Richard Falcon, Mental Health Professional, Program Manager, Compass Behavioral Health

Educators, nurses and administrators play an important part in brain development and in mental health. We will discuss what it takes to develop a healthy brain, what causes early brain development, how adverse childhood experiences have an affect on the brain and disorders that are common among children. When educators understand the impact that trauma has on the brain, they start to understand why some kids can't learn or concentrate and why some develop anxiety and depression. This understanding will help educators, nurses and administrators develop ways to help rewire the brain. The sooner we start to rewire the brain, the more success we will have with our students.

CONFERENCE INFORMATION

ACCOMMODATION

Room Rates

Special rates for conference attendees have been arranged with the Hyatt Regency Hotel in Wichita, Kansas. Room rates are \$135.00 per night + tax. There is no charge for parking if you are staying at the hotel. Daily commuters will be charged \$5.00 per day to park in the parking garage. There is free parking located across the street from the Hyatt. Basic wifi is included in the cost of your sleeping room.

Making a Reservation

Reservations must be received by June 25, 2023. You can make reservations online or by calling the Hyatt at 1-888-421-1442. Identify yourself as a KSN Conference participant to receive the special rate. To reserve a room online, visit: <https://www.hyatt.com/en-US/group-booking/WICRW/G-KNU5>

Check-in/Check-out

Check-in time is after 3:00 p.m. Room assignments prior to that time are based on availability. Check-out time is noon. If you are attending a post session on Thursday afternoon, you may store your luggage in the bellman's closet. Please inquire at the front desk.

Smoking/Non-Smoking Rooms

The Hyatt Regency Wichita is a smoke-free hotel.

Sales Tax Exemption

All rooms are subject to sales tax of 7.5%, 2.75% City Fee, and a "Transient Guest" tax of 6%. You may be exempt from paying sales tax on your sleeping room if you:

1. Present a copy of your school district's tax-exempt certificate at check-in and;
2. Pay for your room at checkout with a check or credit card issued by your school district.

OTHER INFORMATION

Right of Termination for Cause

This agreement and the University's obligations hereunder regarding this conference and the presentation of any or all associated sessions and optional entertainment events are subject to acts of God, war, terrorism, government regulations, disaster, fire, strikes, civil disorder, curtailment of transportation facilities, or other similar cause beyond the control of the parties making it inadvisable, illegal, or impossible to hold the event or provide the facility. If the conference or any associated event is canceled due to one of the aforementioned occurrences, the liability of the University shall be limited to refunding the conference registration fee or a portion thereof. The University shall not be responsible for consequential damages, including, but not limited to, any losses incurred by registrants including, but not limited to, airline cancellation charges, hotel deposits and other associated travel costs.

Photo usage

By attending the Kansas School Nurse Conference, you give KSNO and Wichita State the right to take photos and use your image in future promotional materials.

Special Accommodations

The Kansas School Nurse Conference Planning Committee is committed to making programs accessible to people with disabilities. If you wish to volunteer information regarding any special assistance you may need, please contact the Office for Workforce, Professional, and Community Education at 316-978-6493.

Notice of Non-discrimination

Wichita State University does not discriminate in its employment practices, educational programs or activities on the basis of age (40 years or older), ancestry, color, disability, gender, gender expression, gender identity, genetic information, marital status, national origin, political affiliation, pregnancy, race, religion, sex, sexual orientation, or status as a veteran. Retaliation against an individual filing or cooperating in a complaint process is also prohibited. Sexual misconduct, relationship violence and stalking are forms of sex discrimination and are prohibited under Title IX of the Education Amendments Act of 1972. Complaints or concerns related to alleged discrimination may be directed to the Director of Equal Opportunity or the Title IX Coordinator, Wichita State University, 1845 Fairmount, Wichita, KS 67260, telephone 316-978-3187.

CONFERENCE INFORMATION

REGISTRATION, FEES & REFUNDS

The 2023 KSN Conference will be held in-person only at the Hyatt Regency Wichita. Virtual attendance and session recordings will not be available.

The New School Nurse Orientation registration fee includes conference materials, conference app, continental breakfast on Monday and Tuesday, lunch on Monday and refreshment breaks.

The General Session registration fee includes conference materials, lunch on Tuesday and Wednesday, breakfast on Wednesday and Thursday, and refreshment breaks. Lunch on Thursday is not included. General Session attendees will have access to the conference app, including sponsor and exhibitor information.

A form of payment must accompany your registration form. School districts that are unable to pay until after July 1 may register early by completing the registration form and sending it in along with a purchase order. Please confirm with your district that they have mailed your registration.

All cancellations must be made in writing. A 15% administrative fee will be assessed on all cancellations (this includes purchase orders). There will be no refunds after July 1, 2023. You will receive a confirmation email within 1-2 days of the receipt of your registration form. If you do not, please contact the WSU Conference Office at (316) 978-6493. The KSN Conference is being facilitated by the Wichita State University Office for Workforce, Professional and Community Education.

Register online at wichita.edu/ksn

Or mail or fax your completed registration form and check or purchase order (made payable to the Office of University Conferences) to:

Office for Workforce, Professional and Community Education
Wichita State University
1845 Fairmount, Campus Box 136
Wichita, Kansas 67260-0136

Fax: (316) 978-3064

REGISTRATION FORM

or register online at wichita.edu/ksn

Name, as it appears on your nursing license _____

Home Address _____

City, State, Zip _____

Home Phone _____ Business Phone _____

Business E-mail _____

Other E-mail (that will be monitored over the summer) _____

USD # and Name or County Health Dept. _____

Business/Billing Address _____

City, State, Zip _____ County: _____

License Type & Nursing License # (required) _____

Are you a first time attendee? ☐ yes ☐ no

Are you a KSNO Member? ☐ yes ☐ no [†]KSNO Membership # (required for discount) _____

☐ I require vegetarian meals.

☐ I have medical/religious/special dietary needs. Please list: _____

Do you require any special accommodations? _____

General Conference		Early bird (ends 6/16)	Regular
<input type="checkbox"/>	KSNO Members [†]	\$260	\$310
<input type="checkbox"/>	Non-members of KSNO	\$310	\$335

Pre & Post Sessions		Regular
<input type="checkbox"/>	New School Nurse Orientation	\$125
<input type="checkbox"/>	CPR Recertification Session 1, Monday, July 17, 3-5p	\$80
<input type="checkbox"/>	CPR Recertification Session 2, Tuesday, July 18, 7-9p	\$80
<input type="checkbox"/>	CPR Recertification Session 3, Thursday, July 20, 1-3p*	\$80
<input type="checkbox"/>	504 Training, Thursday, July 20, 1-3:30p*	\$70
<input type="checkbox"/>	SANE/SART Training, Thursday, July 20, 1-4p*	\$70
<input type="checkbox"/>	*Optional Thursday Boxed Lunch	\$25

TOTAL AMOUNT

\$ _____

Payment method: ☐ Check ☐ Purchase Order ☐ Visa ☐ MasterCard ☐ AMEX ☐ Discover

CC# _____ Exp Date _____ Security Code _____

Name as printed on the card _____

Signature _____

Early registration must be postmarked by June 16