



32nd ANNUAL
STATEWIDE SUMMER CONFERENCE FOR
KANSAS SCHOOL NURSES

**BUILDING RESILIENCE THROUGH
FLEXIBILITY AND PERSEVERANCE**

General Session: July 20 - 22, 2021 | Virtual Event
New Nurse Orientation: July 19, 2021 | Hybrid Event

SPONSORED BY



WELCOME

Welcome to the 32nd Annual Statewide Summer Conference for Kansas School Nurses! We are excited to invite nurses locally, regionally, and nationally to this exciting event. As always, we are proud to continue the legacy of providing the exceptional continuing education to school nurses that this conference has been privileged to extend for more than three decades.

This year we again find ourselves at a crossroad. How do we best provide relevant education and meaningful connection while upholding the integrity and importance of a healthy environment? We accepted the challenge, once again, to make the best decision we can with the information we have. With that in mind, in 2021 we are prioritizing the impact of in-person learning for new nurses to the field, while seeking top notch virtual presenters for the majority of attendees.

The KSN Conference General Session will be held virtually as it was in 2020. Attendees will receive 15+ contact hours over the course of three days, from July 20 - 22, including three keynotes and five breakout sessions. General Session registrants will have access to all materials for one year following the conference.

The KSN Conference New Nurse Orientation will be held both in-person and virtually, in what we call a "hybrid" event on July 19, 2021. A limited number of New Nurse registrants may attend in-person at the Hyatt Regency Wichita. In-person attendance is first-come, first-served until the limit is reached. All New Nurse Orientation sessions will be live-streamed to the virtual conference platform for an unlimited number of virtual attendees. New Nurse attendees will receive 7.8 contact hours.

You should be proud of your efforts for Kansas youth and schools over the past year. We have striven to provide a range of interesting and applicable presentations so that you may be rejuvenated and your efforts may continue. Please join us for the next iteration of the Kansas School Nurse Conference!

With regard,

The Kansas School Nurse Conference Planning Committee

CONFERENCE PLANNING COMMITTEE

Mary Ann Bauman, RN, USD 461 Neodesha

Katrina Benyshek, BSN, RN, NCSN, Conference Chair, USD 214 Ulysses

Darlene Coffey, MSED, BSN, KSNO Vice President, USD 457 Garden City

Windy Garrett, MSN, USD 500 Kansas City Kansas Public Schools

Sue Holmes, BSN, RN, NCSN-E, Salina

Ronda Hutchinson, BSN, RN, KSNO President, USD 259 Wichita

Kimber Kasitz, BSN, RN, NCSN, KSNO Past-President, Director of Health, Homebound & 504 Services, USD 259 Wichita

Abby Martin, BSBA, RN, USD 343 Perry-LeCompton

Jolene Morrison, LPN, USD 345 Seaman

Elisa Nehrbass, MEd, Kansas Department of Health and Environment

Debra Pile, DNP, APRN, P-CNS, Interim Chair and Associate Professor, Wichita State University School of Nursing

Holly Steinlage, MPH, RD, LD, Child Nutrition Program Consultant, Kansas State Department of Education

Kindly consider...

When the Kansas School Nurse Conference is held in-person, KSNO has the ability to fundraise through gift basket raffles other special events. KSNO still relies on your generosity, even though we must meet virtually. Kindly consider making a donation to the organization to provide scholarships and continuing education to Kansas school nurses.

Donations can be made at the time of conference registration or by contacting Lesley Thomas, KSNO Treasurer, at lethomas@usd261.com

CONFERENCE OBJECTIVES

GENERAL SESSION

- Recognize and identify events that occur in the daily life of students that can affect attendance and performance in their daily lives.
- Identify potential threats to health and safety in the school setting and the strategies to employ, prepare, mitigate and respond to preserve the physical and emotional well-being of schools and the community.
- Recognize how attitude and approach to challenges positively or negatively affect school students and staff in their daily lives.
- Identify the role of the school health professionals in the surveillance, prevention, and management of chronic, acute, and infectious diseases.
- Review common health conditions in pediatric and adolescent populations and strategies for responding and managing chronic and urgent health needs with health care and education partners.
- Compare current personal and professional school health professional practices with evidence-based practices to design a plan to incorporate interdisciplinary partners in improving health and education outcomes for school populations and communities.

NEW NURSE ORIENTATION

- Integrate evidence-based nursing practice in an interdisciplinary Kansas education structure.
- Locate laws and standards impacting school health programs and the school nurse.
- Discuss the development and implementation of policies and procedures.
- Describe the role of the school nurse in identifying, reporting, and preventing communicable diseases in the school setting.
- Examine the current immunization schedule with application to school health.
- Define delegation and implications to nursing practice in the school setting.
- Identify day to day school nursing planning and management strategies.
- Differentiate the purpose and requirements for the various plans of care for students that include health care plans, Section 504 Plans, and Special Education Plans.
- Discuss the role of the school nurse in emergency planning and response in the school setting.
- Describe the value of effective communication and collaboration to enhance student and family capacity for adaptation, self-management, self-advocacy, and learning.

CONFERENCE SCHEDULE

NEW NURSE ORIENTATION*

MONDAY, JULY 19

- 7:00 **IN-PERSON REGISTRATION & BREAKFAST**, *provided for in-person attendees*
- 8:00 **WELCOME**
Ronda Hutchinson, BSN, RN, KSNO President, USD 259 Wichita
Katrina Benyshek, BSN, RN, NCSN, Conference Chair, USD 214 Ulysses
- 8:30 **THE TOP TEN THINGS YOU NEED TO KNOW AS A SCHOOL NURSE**
Katrina Benyshek, BSN, RN, NCSN, Conference Chair, USD 214 Ulysses
- 9:30 **BREAK**
- 9:45 **SCHOOL NURSING LAWS & STATUTES**
Sharon Morris, MSN, RN, Director of Health Services, Olathe Public Schools Mill Creek Campus
- 11:15 **LUNCH**, *provided for in-person attendees*
- 12:15 **MEDICATION & DELEGATION**
Kimber Kasitz, BSN, RN, NCSN, KSNO Past-President, Director of Health, Homebound & 504 Services, USD 259 Wichita
- 1:15 **DISEASE REPORTING & VACCINE-PREVENTABLE DISEASE (VPD) CASE & OUTBREAK INVESTIGATIONS: THE ROLE OF A SCHOOL NURSE**
Allison Zaldivar, MPH, Epidemiologist, Infectious Disease Epidemiology & Response, Kansas Department of Health & Environment
- 2:45 **BREAK**
- 3:00 **IMMUNIZATIONS: THE ROLE OF THE SCHOOL NURSE**
Becky Prall, RN, IQIP Coordinator/Immunization Nurse Educator, Kansas Immunization Program, Kansas Department of Health & Environment
- 4:00 **WRAP UP Q&A**
All New School Nurse Orientation Presenters
- 4:30 **NEW SCHOOL NURSE ORIENTATION ADJOURN**

**New School Nurse Orientation will be held as a hybrid event. Please see page 1 for more information.*

CONFERENCE SCHEDULE

GENERAL SESSION*

TUESDAY, JULY 20

8:45 WELCOME

Ronda Hutchinson, BSN, RN, KSNO President,
USD 259 Wichita
Katrina Benyshek, BSN, RN, NCSN, Conference
Chair, USD 214 Ulysses

9:00 OPENING KEYNOTE

School Nurses Well-Being During a Pandemic
Robin Cogan, MEd, RN, NCSN - Camden City
School Nurse

10:30 BREAK

11:00 BREAKOUT SESSION BLOCK 1

12:30 BREAK FOR LUNCH

1:15 BREAKOUT SESSION BLOCK 2

2:45 SPONSOR & EXHIBITOR EXPO

3:00 VIRTUAL POSTER SESSION

*Telehealth School Nurse Survey Results &
Analysis*
KU Center for Telemedicine & Telehealth

4:00 DAY 1 ADJOURN

GENERAL SESSION

WEDNESDAY, JULY 21

8:25 WELCOME

8:30 KEYNOTES

*Improving the Health of Kansas Students: School-
Based Strategies to Promote and Implement
Overweight and Obesity Prevention and
Management*

Carissa Stanton, MD, FAAP, General Pediatrician,
Pediatric Partners

*A Toolkit for School Nurses: School-based
Strategies to Promote and Implement Overweight
and Obesity Prevention and Management in the
School Setting*

Cynthia Galemore, MEd, BSN, RN, NCSN, FNASN,
Co-Chair, School Nurse Advisory Council, KSNO Data
Chair

10:35 BREAK

11:00 BREAKOUT SESSION BLOCK 3

12:30 BREAK FOR LUNCH

**1:00 KANSAS SCHOOL NURSE ORGANIZATION
(KSNO) BUSINESS MEETING
SPONSOR & EXHIBITOR EXPO**

2:00 VIRTUAL POSTER SESSION

*Telehealth School Nurse Survey Results &
Analysis*
KU Center for Telemedicine & Telehealth

2:30 BREAKOUT SESSION BLOCK 4

4:00 DAY 2 ADJOURN

*All General Session Meetings are virtual.

CONFERENCE SCHEDULE

GENERAL SESSION

THURSDAY, JULY 22

- 8:30 **BREAKOUT SESSION BLOCK 5**
- 10:00 **BREAK**
- 10:15 **KANSAS SCHOOL NURSE ORGANIZATION AWARDS CEREMONY**
- 10:30 **CLOSING KEYNOTE**
 School Nursing is a Marathon
 Matt Jones, MS, ABD
- 12:15 **CONFERENCE ADJOURN**

CONTINUING EDUCATION

Wichita State University College of Health Professions is approved as a provider of continuing nursing education by the Kansas State Board of Nursing. This course offering is pending approval for contact hours applicable for RN, LPN or LMHT relicensure. Kansas State Board of Nursing provider number: #LT 0090-0327. These course offerings are pending approval for 7.8 contact hours for the New School Nurse Orientation, 15.1 contact hours for the General Session, and 5.4 hours for Premium Pass sessions. Certificates will be emailed within 30 days upon completion of the conference evaluation.

Important Information Regarding Contact Hours for Professional Relicensure

Post-event evaluations will be emailed to attendees following the conference, which will include spaces for "code words." Speakers will give a code word during each session, which the attendee must enter on the evaluation. This is **required** to qualify for continuing education credit.

In order to earn the entire 15.1 hours for the General Session, you must view and evaluate the following no later than August 31, 2021:

- Opening Keynote
- Plenary Session
- Closing Keynote
- Five (5) Breakout Sessions

In order to earn the entire 7.8 hours for New Nurse Orientation, you must view and evaluate the following no later than August 31, 2021:

- The Top 10 Things You Need to Know as a School Nurse
- School Nursing Laws & Statutes
- Medication & Delegation
- Disease Reporting & Vaccine Preventable Disease (VPD) Case & Outbreak Investigations
- Immunizations
- Orientation Q&A

The Premium Pass allows you to view and evaluate three additional breakout sessions from the General Session for 5.4 hours of credit. These must be viewed and evaluated no later than August 31, 2021.

KEYNOTE SPEAKERS



ROBIN COGAN

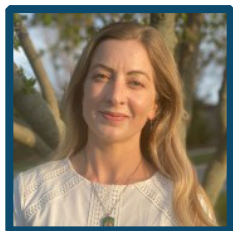
MEd, RN, NCSN - Camden City School Nurse

Bio: Robin Cogan, MEd, RN, NCSN is a Nationally Certified School Nurse (NCSN), currently in her 20th year as a New Jersey school nurse in the Camden City School District. Robin is the Legislative Chair for the New Jersey State School Nurses Association. Robin is the honored recipient of multiple awards in NJ and nationally for her work in school nursing and population health. Most recently, she was thrilled to be presented with the 2020 National Association of School Nurses President's Award. Robin also serves as part-time faculty in the School Nurse Certificate Program at Rutgers University-Camden, where she teaches the next generation of school nurses. She is a blogger, writer, speaker, and activist. You may know her as The Relentless School Nurse. You can follow Robin on Twitter @RobinCogan or reach her via email relentlesschoolnurse@gmail.com.

School Nurses: Well-Being During a Pandemic

July 20, 9:00 - 10:30 a.m.

Session Description: School nurses' well-being during the pandemic is as important as those we serve in our school communities. Robin Cogan, also known as The Relentless School Nurse, will guide an interactive discussion that will promote a strength-based approach to well-being for school nurses. We will look at resilience in the face of adversity and identify triumphs in the most consequential times in modern school nursing history.



CARISSA STANTON

MD, FAAP, GENERAL PEDIATRICIAN, PEDIATRIC PARTNERS

Bio: Dr. Carissa Stanton earned a Bachelor of Science degree in Dietetics from Kansas State University, and a Doctor of Medicine degree from the University of Kansas School of Medicine. She completed her General Pediatrics residency at the University of Kansas Medical Center. She also has training in Integrative Medicine. She currently is a general pediatrician in private practice in Kansas. She has a passion for helping children optimize their nutrition and healthy lifestyle. She does this through her patients, advocacy, and educating others through presentations, social media, and a blog. She has presented on the topic of childhood nutrition and obesity prevention/treatment to many organizations, including local school district meetings and a previous Kansas School Nurses Organization meeting. She is currently working on a childhood obesity prevention and treatment grant collaboration between Kansas Department of Health and Environment, Kansas School Nurses Organization, Kansas Chapter of American Academy of Pediatrics, and School Nurse Advisory Council.

Improving the Health of Kansas Students: School-based Strategies to Promote and Implement Overweight and Obesity Prevention and Management

July 21, 8:30 - 9:30 a.m.

Session Description: This presentation has the goal of helping healthcare providers and schools to work as a team to help improve the health of Kansas students. Dr. Stanton will provide information on a collaboration between the Kansas Department of Health and Environment, Kansas School Nurses Organization, Kansas Chapter of American Academy of Pediatrics, and School Nurse Advisory Council that aims to prevent and treat childhood obesity in Kansas. Dr. Stanton will provide education on prevention and treatment of childhood obesity, and discuss school based strategies that can be implemented.

KEYNOTE SPEAKERS



CYNTHIA GALEMORE

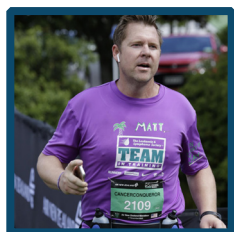
MSEd, BSN, RN, NCSN, FNASN, Co-Chair, School Nurse Advisory Council, KSNO Data Chair

Bio: Cynthia (Cindy) Galemore retired in 2017 from her position as Director of Health Services for Olathe Public Schools, beginning her career with the school district as an elementary school nurse in 1991. Since 2010, she has served as the editor for the NASN School Nurse, the clinical resource journal for the National Association of School Nurses. She has been a member of KSNO since 1991 and active on the Board of Directors since 1995, including serving as KSNO President in 2001-2002. She also serves as Co-Chair of the School Nurse Advisory Council, a council organized and funded by the Kansas Department of Health and Environment, Bureau of Health Promotion, through the Centers for Disease Control and Prevention's Preventive Health and Health Services Block Grant.

A Toolkit for School Nurses: School-based Strategies to Promote & Implement Overweight and Obesity Prevention and Management in the School Setting

July 21, 9:35 - 10:35 a.m.

Session Description: The Kansas Department of Health and Environment, Bureau of Health Promotion, recently published a toolkit for the purpose of improving the health of Kansas students, primarily focused on preventing and management of students with overweight or obesity. This Toolkit, developed by and for school nurses, is designed to provide evidence-based overweight and obesity prevention and management information, tools, and resources. The Toolkit is composed of eight major strategies, and organized from a more global, community reaching to individualized assessment and management strategies, much more than just a "how to" for BMI surveillance and screening. Through sharing an overview of the toolkit, school nurses will discover new tools and resources for use both in their individual practice and in collaboration with their staff and school wellness councils.



MATT JONES

MS, ABD

Bio: Matt Jones is originally from Emporia, Kansas. During his senior year of college at Emporia State University, he was diagnosed with leukemia. At one point, it spread to the fluid in his brain, and he slipped into an unconscious state, and doctors were not sure he would live. Against all odds, he recovered and had a successful bone marrow transplant at KU Medical Center. This year he celebrated his 17th year anniversary. Due to complications from slipping into an unconscious state, Matt had to relearn how to walk. He has since completed a marathon on every continent, and yes, that includes Antarctica and the newly discovered continent of Zealandia.

Matt holds a Masters from Fort Hays State and ABD from Chicago School of Professional Psychology, where he studied Organizational Leadership. He is also the author of several books, and his latest one is "Happiness is a Marathon," and is based on research from the field of Positive Psychology. For more information about Matt Jones, please visit his website at www.MatthewDJones.com

School Nursing is a Marathon

July 22, 10:30 a.m. - 12:00 p.m.

Session Description: Matt's Talk, "School Nursing is a Marathon," is designed to empower, inspire, and motivate in the marathon of school nursing. You will be inspired as you hear the lessons Matt learned from going from a three-time cancer conqueror to completing a marathon on every continent after relearning how to walk.

In this talk, you will learn three choices that you can use to overcome the challenges in your life and achieve more incredible victory both personally and professionally. This talk offers the following benefits:

- Reigniting one's passion and purpose for life and nursing
- Learn key happiness strategies from the field of Positive Psychology
- Become inspired through Matt's story of conquering cancer three times and completing eight marathons on eight continents after relearning how to walk

BREAKOUT SESSIONS

Kids Get Arthritis Too

Tiffany Coffman, *Arthritis Foundation Volunteer, West Region Lead Facilitator, Live Yes! Connect Juvenile Arthritis Parent Groups*

Come learn how normal these compromised kids really are. We will have an educational portion and an open discussion about compromised immune systems, how you can make a difference, what is required before they make it to you. Not only is it a right, but the law.

Kansas Kids are Thirsty for Health

Tanya Dorf Brunner, *MS, Executive Director, Oral Health Kansas, Inc.*
Jerry Henn, *MS, Assistant Executive Director, United School Administrators of Kansas*

Joni Foster-Webster, *BS, Deputy Executive Director, Community Action, Inc.*

A new project in Kansas is designed to help schools promote drinking water by making it more accessible and available to Kansas schoolchildren. Kids who are able to stay hydrated focus and learn better, and drinking plenty of water helps kids avoid health problems, including obesity. The positive effects of drinking water go even further. National Institutes of Health, researchers found that there are disparities in tap water consumption among young people based on education, language, and race/ethnicity and that the first step toward a goal of all children drinking tap water regularly is to ensure equal access to safe tap water, especially in low-income and minority communities. The partners in the new Thirsty for Health project will share the latest information about the safety and effectiveness of using water bottle filling stations in schools and how schools across the state can make changes to make water more available to students.

Commercial Sexual Exploitation of Children (CSEC) and School Nursing

Megan D. Steele, *MSN, RN, School Nurse, Flint Hills Christian School*

CSEC is a crime that is often unnoticed and underreported because children are hidden in plain sight and the trafficking frequently occurs at the margins of society and behind closed doors. CSEC has been reported in rural and urban areas of all 50 states and is a lucrative enterprise that attracts a variety of entrepreneurs ranging from individuals and family groups to sophisticated criminal networks. Contrary to popular believe, victims of CSEC are attending school and the school nurse is well positioned to identify and may be the last point of intervention for these students. Come learn about CSEC and how you, as the school nurse, can be identifying and assisting these students.

From Seat to Feet: One School's "Moving" Transition to Action-based Learning

Brandy Bowlen, *BSN, RN, NCSN, Epps Island Elementary School Nurse, Klein ISD*

In this session, I will discuss how an underserved and highly diverse elementary school moved from traditional classroom teaching to the utilization of Action Based Learning theories under the direction of myself, the school nurse. High percentages of overweight and obese students led me to seek interventions encompassing the whole child. After studying the Whole School Whole Child Whole Community Model by the CDC and starting many smaller programs, I wrote a grant with a team of staff members. We embarked on a journey of transition. We utilized Twitter to start a competition so the teachers and students would become excited about the program, and what happened was even greater than we had initially expected. Other districts now view our Twitter hashtag to learn ways that they, too, can get involved in Action Based Learning. I moved out of the shadows of the school health clinic and into the light throughout the rest of the building! I was no longer invisible.

Section 504 - It's All About the Process!

Kimber Kasitz, *BSN, RN, NCSN, KSNO Past-President, Director of Health, Homebound & 504 Services, USD 259 Wichita*

This session is a must for anyone who wants to understand your legal duties regarding Child Find and Section 504! Kimber Kasitz, Director of Health Services and Section 504 for Wichita Public Schools will provide an overview of Section 504 as a civil rights law and a complete picture of the Section 504 FAPE process. From Child Find to eligibility, to creation of the Section 504 plan to reevaluation. Kimber will cover the gamut. She'll explain how Section 504 fits with regular and special education and illustrate best practices, emphasizing legal compliance. You'll also learn about discipline of students with disabilities and equal participation in extracurricular and nonacademic services.

The Highs and Lows of Living with Diabetes at School

Ryan McDonough, *DO, FAAP, Pediatric Endocrinologist, Co-Medical Director, Children's Mercy Diabetes Center*

The session will be an interactive lecture of the basics of diabetes pathophysiology and typical treatments. We will focus on the rapidly advancing technologies that support diabetes management, and their on the care of students at home and school.

BREAKOUT SESSIONS

Understanding Seizures, Treatment Options & The Impact of Epilepsy

Bridgit Patterson, Program Director, Epilepsy Foundation of Missouri and Kansas

In this specialized seizure education workshop the participant will learn how to recognize multiple seizure types and know the appropriate response and first-aid for a student during and after a seizure. We will discuss what makes a seizure an emergency and the various triggers that are associated with epilepsy. We will identify the essential components of a seizure action plan, the importance of parent questionnaires and the use of seizure observation records. We will dive into the four most common treatment options for students with seizures; including CBD oil, and identify side effects of those treatments. We will learn the impact of epilepsy on student learning, behavior and quality of life, and discuss tools for supporting students with epilepsy.

Adverse Childhood Experiences (ACEs): Understanding the Impact on the Developing Child's Brain and Body Over a Lifetime

Jina Arellano, BSEd, MS SPED, teacher, retired USD 457

Adverse childhood experiences, or ACEs, are potentially traumatic events that occur in childhood (0-17 years). For example:

- experiencing violence, abuse, or neglect
- witnessing violence in the home or community
- having a family member attempt or die by suicide

In children ACEs can impact them academically, socially, physically and behaviorally. ACEs are also linked to chronic health problems, mental illness, and substance misuse in adulthood. ACEs can also negatively impact education and job opportunities. However, ACEs can be prevented.

How to Do Allyship and Advocate for/with LGBTQ Students

Rhiannon Miller, LMSW, School Social Worker, Board Chair, GLSEN Kansas

Gabriel Padilla, BS, Mathematics Teacher, Wichita Public Schools

This session will cover the experiences of Kansas LGBTQ students, some of the basics of how to do allyship, and some basic information about LGBTQ students' rights. Rhiannon and Gabe will highlight some GLSEN resources (Safe Space Kits, posters, and stickers, among others) that school nurses can use in their offices and schools. They will also give practical tips and advice on how to ensure LGBTQ students feel safe, valued, and respected in your office and school.

Tobacco Free Schools in the Age of Vape

Jordan Roberts, Prevention Program Manager, Kansas Department of Health and Environment

The rapid rise in popularity of e-cigarettes, also known as vape, among teens has reached epidemic proportions in the past few years. This new tobacco product brings new challenges to maintaining a tobacco free school. School nurses can help their districts, schools and students become vape and tobacco free. Join this session to learn more about the issue, and what you can do to help.

Emergency Preparedness and Response: The Role of the School Nurse

Chris Tuck, MS, RN, BSN, NCSN, Retired Health Services Director, Seaman USD 345 Topeka

In this session participants will define the role of the school nurse in emergency preparedness and response, including planning appropriate responses for students/staff illness, injury, or other medical emergencies; understand the importance of a school district "All-Hazards," comprehensive, Emergency Operations Plan; gain an understanding of the 8 "Key Components for School Health Services Disaster Preparedness; and become knowledgeable with the role of emergency preparedness and response partners in ensuring continuum of emergency preparedness, response and follow-up.

Every Student Counts! Presenting NASN's New Platform for Data Collection

Cynthia Galemore, MSED, BSN, RN, NCSN, FNASN, Co-Chair, School Nurse Advisory Council, KSNO Data Chair

The National Association of School Nurses' (NASN) data Initiative, the National School Health Data Set: Every Student Counts! includes a three-pronged approach: building school nurse capacity, uniform data points, and data infrastructure. During the 2020-2021 school year, NASN unveiled a new, web-based program for the collection of this data. A review of this initiative, along with discussion of our state's history in school nurse data collection, will ignite the urgency for the collection and use of data by every school nurse for the purpose of influencing local and state student health policy, identifying best practices in school health, and a better understanding of child health.

BREAKOUT SESSIONS

Building an Individualized Healthcare Plan and Creating Documentation to Support School Nursing Practice

Annie Wallace, MSN, RN, Assistant Professor of Nursing, University of Central Missouri

This session will provide information, examples and tools to assist school nurses in creating appropriate documentation, collecting relevant information & building IHP that are relevant and effective.

Kinship Care

Anson Tullis, JD, Staff Attorney, Kansas Legal Services

Ana Rodriguez, Kinship Navigator Case Manager/KN, Kansas Children's Service League

Kayla Cary, Circle of Parents and Events Coordinator, Kansas Children's Service League

Kansas Children's Service League is a non-profit organization in Sedgwick County that promotes Stronger Families Start Here and offers Kinship Navigation Support Services that partners with Kansas Legal Services. Ana and Kayla from KCSL will discuss what Kinship Care entails and the benefits of the program while Anson from KLS will discuss the new and innovative KinTech program and the distinctions between the common usage (or misuse) of legal terms like "custody," "temporary guardianship" and common misconceptions regarding these terms.

COVID-19 in Youth: How to Prepare for What's Next

Kari Harris, MD, Associate Professor of Pediatrics, University of Kansas School of Medicine - Wichita

Stephanie Kuhlmann, DO, Associate Professor of Pediatrics, University of Kansas School of Medicine - Wichita

Paul Teran, MD, Assistant Professor, University of Kansas School of Medicine - Wichita Pediatrics

Kansas COVID Workgroup for Kids (KCWK) is a geographically diverse, multidisciplinary team committed to advocating for youth during and following the COVID-19 pandemic. Medical professionals from KCWK will share the latest impact COVID-19 is having on youth and their thoughts on the upcoming school year. This session will also review up to date evidence regarding COVID-19 and youth.

Meal Modifications in School Meal Programs

Holly Steinlage, MPH, RD, LD, Child Nutrition Consultant, Kansas State Department of Education

Understand the policy guidance and requirements related to providing School Nutrition Program meals to children with special dietary needs.

Dermatology in the Schools: the Seen and Unseen

Laura Ericson, MSN, APRN, FNP-BC, Advance Practice Nurse, Pediatric Dermatology, Children's Mercy Hospital and Clinics

Presentation will provide a photo and treatment overview of various common dermatology diagnoses that commonly present in school age children. Content to include: Molluscum Contagiosum, Herpes Simplex Virus, Zoster, Eczema Herpeticum, Coxsackie Virus, Atopic Dermatitis, Impetigo, Tinea Corporis/Capitis, Hidradenitis Suppurativa, Acne, Warts, and more. References will be made to the Redbook and Kansas school policies regarding whether or not to send home students with these conditions. Simple treatment measures suggested for the school nurse to initiate in the school setting and recommendations for follow up care..

Project ADAM & Return to Play After COVID Infection

Lalitha Gopineti

This session will cover what Project ADAM is and how schools can become Heart Safe. This session will also discuss the impact of COVID on athletes and the guidelines for return to play after COVID infection.

Identifying and Addressing the Physical Effects of Long-Term Emotional Trauma

Shawna Wright, PhD, LP, Associate Director, KU Center for Telemedicine and Telehealth

Sarah Gilliland, DNP, RN, Health Services Coordinator, Olathe Public Schools

This session will define emotional trauma and identify common physical symptoms and effects that are often associated with long-term emotional trauma. Participants will be guided through understanding how to recognize emotional trauma and its physical symptoms. Steps for preventing and addressing the physical effects of trauma will be introduced and explained for student and adult populations.

Poster Session: School-Based Telehealth Nurses Study: Assessment of participants' perceptions of factors related to implementing and maintaining school-based telehealth programs **KU Center for Telemedicine & Telehealth**

After being approached by nursing professionals regarding School-Based Telehealth (SBTH) programs in the state of Kansas, the research team investigated the perceptions of SBTH amongst school nurses. This poster presents findings related to nurse's thoughts on the benefits and barriers of implementing and maintaining SBTH, policy considerations, and the clinical areas that are most suited to a SBTH format.

CONFERENCE INFORMATION

REGISTRATION, FEES & REFUNDS

The New School Nurse Orientation registration fee includes all live sessions on Monday, July 19, presentation materials, and 365 days of access to the session recordings. For CNE credit, all New Nurse Orientation sessions must be viewed and evaluated by August 31, 2021.

The General Session registration fee includes all live sessions on July 20-22, 2021, presentation materials, and 365 days of access to the session recordings. For CNE credit, all General Session sessions must be viewed and evaluated by August 31, 2021.

The Premium Pass must be purchased in conjunction with General Session registration and includes access to the General Session recordings for 365 days. Attendees may attend and evaluate three additional breakout sessions to earn an additional 5.4 contact hours. For CNE credit, all the three additional breakout sessions must be viewed and evaluated by August 31, 2021.

A form of payment must accompany your registration form. School districts that are unable to pay until after July 1 may register early by completing the registration form and sending it in along with a purchase order. Please confirm with your district that they have mailed your registration.

There will be no refunds issued for the virtual conference. You will receive a confirmation email within 1-2 days of the receipt of your registration form. If you do not, please contact Teruko Mitchell, Conference Registrar, at (316) 978-6493. The KSN Conference is being facilitated by the Wichita State University Office for Workforce, Professional and Community Education. Please mail your completed registration form and check or purchase order (made payable to the Office of University Conferences) to:

Office for Workforce, Professional and Community Education
Wichita State University
1845 Fairmount, Campus Box 136
Wichita, Kansas 67260-0136

Fax: (316) 978-3064

You may also register online at www.wichita.edu/conferences/ksn.

By participating in the Kansas School Nurse Conference, you give the Kansas School Nurse Planning Committee and Wichita State University the right to take photos and use your image in future promotional materials.

ACCOMMODATIONS

Room Rates

Limited accommodations with special rates for in-person conference attendees have been arranged with the Hyatt Regency Wichita Hotel. Room rates are \$127.00 per night + tax. There is no charge for parking if you are staying at the hotel. Daily commuters will be charged \$5.00 per day to park in the parking garage. There is free parking located across the street from the Hyatt. Basic Wi-Fi is included in the cost of your sleeping room.

Making a Reservation

Reservations must be received by June 27, 2021. To make reservations visit call the Hyatt at 1-888-421-1442. If you call, be sure to identify yourself as a KSN Conference participant to receive the special rate.

Check-in/Check-out

Check-in time is after 3:00 p.m. Room assignments prior to that time are based on availability. Check-out time is noon.

Sales Tax Exemption

All rooms are subject to sales tax of 7.5%, 2.75% City Fee, and a "Transient Guest" tax of 6%. You may be exempt from paying sales tax on your sleeping room if you:

1. Present a copy of your school district's tax exempt certificate at check-in and;
2. Pay for your room at checkout with a check or credit card issued by your school district.

CONFERENCE INFORMATION

Right of Termination for Cause

This agreement and the University's obligations hereunder regarding this conference and the presentation of any or all associated sessions and optional entertainment events are subject to acts of God, war, terrorism, government regulations, disaster, fire, strikes, civil disorder, curtailment of transportation facilities, or other similar cause beyond the control of the parties making it inadvisable, illegal, or impossible to hold the event or provide the facility. If the conference or any associated event is canceled due to one of the aforementioned occurrences, the liability of the University shall be limited to refunding the conference registration fee or a portion thereof. The University shall not be responsible for consequential damages, including, but not limited to, any losses incurred by registrants including, but not limited to, airline cancellation charges, hotel deposits and other associated travel costs.

Special Accommodations

The Kansas School Nurse Conference Planning Committee is committed to making programs accessible to people with disabilities. If you wish to volunteer information regarding any special assistance you may need, please contact the Office for Workforce, Professional, and Community Education at 316-978-6493.

Notice of Non-discrimination

Wichita State University does not discriminate in its employment practices, educational programs or activities on the basis of age (40 years or older), ancestry, color, disability, gender, gender expression, gender identity, genetic information, marital status, national origin, political affiliation, pregnancy, race, religion, sex, sexual orientation, or status as a veteran. Retaliation against an individual filing or cooperating in a complaint process is also prohibited. Sexual misconduct, relationship violence and stalking are forms of sex discrimination and are prohibited under Title IX of the Education Amendments Act of 1972. Complaints or concerns related to alleged discrimination may be directed to the Director of Equal Opportunity or the Title IX Coordinator, Wichita State University, 1845 Fairmount, Wichita, KS 67260, telephone 316-978-3187.

The Premium Pass must be purchased in conjunction with General Session registration and includes access to the General Session recordings for 365 days. Attendees may attend and evaluate three additional breakout sessions to earn an additional 5.4 contact hours. For CNE credit, all the three additional breakout sessions must be viewed and evaluated by August 31, 2021.

REGISTRATION FORM

32nd ANNUAL STATEWIDE SUMMER CONFERENCE FOR KANSAS SCHOOL NURSES

Register online at www.wichita.edu/conferences/ksn or complete the form below and mail or fax to:

Office for Workforce, Professional and Community Education
Wichita State University
1845 Fairmount, Campus Box 136
Wichita, Kansas 67260-0136
Fax: (316) 978-3064

Name, as it appears on your nursing license _____

Home Address _____

City _____ State _____ Zip _____

Home Phone _____ Business Phone _____

Business E-mail _____

Other E-mail (that will be monitored over the summer) _____

USD # and Name or County Health Dept. _____

Business/Billing Address _____

City _____ State _____ Zip _____

County: _____ License Type & Nursing License # (required) _____

Are you a first time attendee? ____ yes ____ no

Are you a KSNO Member? ____ yes ____ no

KSNO Membership Number (required for discount) _____

Registration Options:

____ New School Nurse Orientation, <i>virtual option</i>	\$110	\$ _____
____ New School Nurse Orientation, <i>in-person option</i>	\$110	\$ _____
____ General Conference (KSNO Members)	\$150	\$ _____
____ General Conference + Premium Pass (KSNO Members)	\$215	\$ _____
____ General Conference (non-members of KSNO)	\$200	\$ _____
____ General Conference + Premium Pass (non-members of KSNO)	\$265	\$ _____
____ Donation to Kansas School Nurse Organization	\$10, <i>suggested</i>	\$ _____

TOTAL AMOUNT ENCLOSED OR NOTED ON PURCHASE ORDER \$ _____

Payment method: ____ Check ____ Purchase Order ____ Visa ____ MasterCard ____ AMEX ____ Discover

CC# _____ Security Code _____ Exp Date _____

Name as printed on the card _____

Signature _____