

Domestic Violence from Behind Bars: Serving Survivors and Those Who Cause Harm

Audrey Cress, Director of Victim Services
Kansas Department of Corrections

Introductions and Expectations

The background of the slide is composed of several overlapping, semi-transparent purple geometric shapes. These shapes, which include triangles and polygons, are arranged in a way that creates a dynamic, layered effect. The colors range from a light lavender to a deep, rich purple. The overall composition is modern and minimalist, with the text positioned on the left side of the frame.

KDOC Office of Victim Services

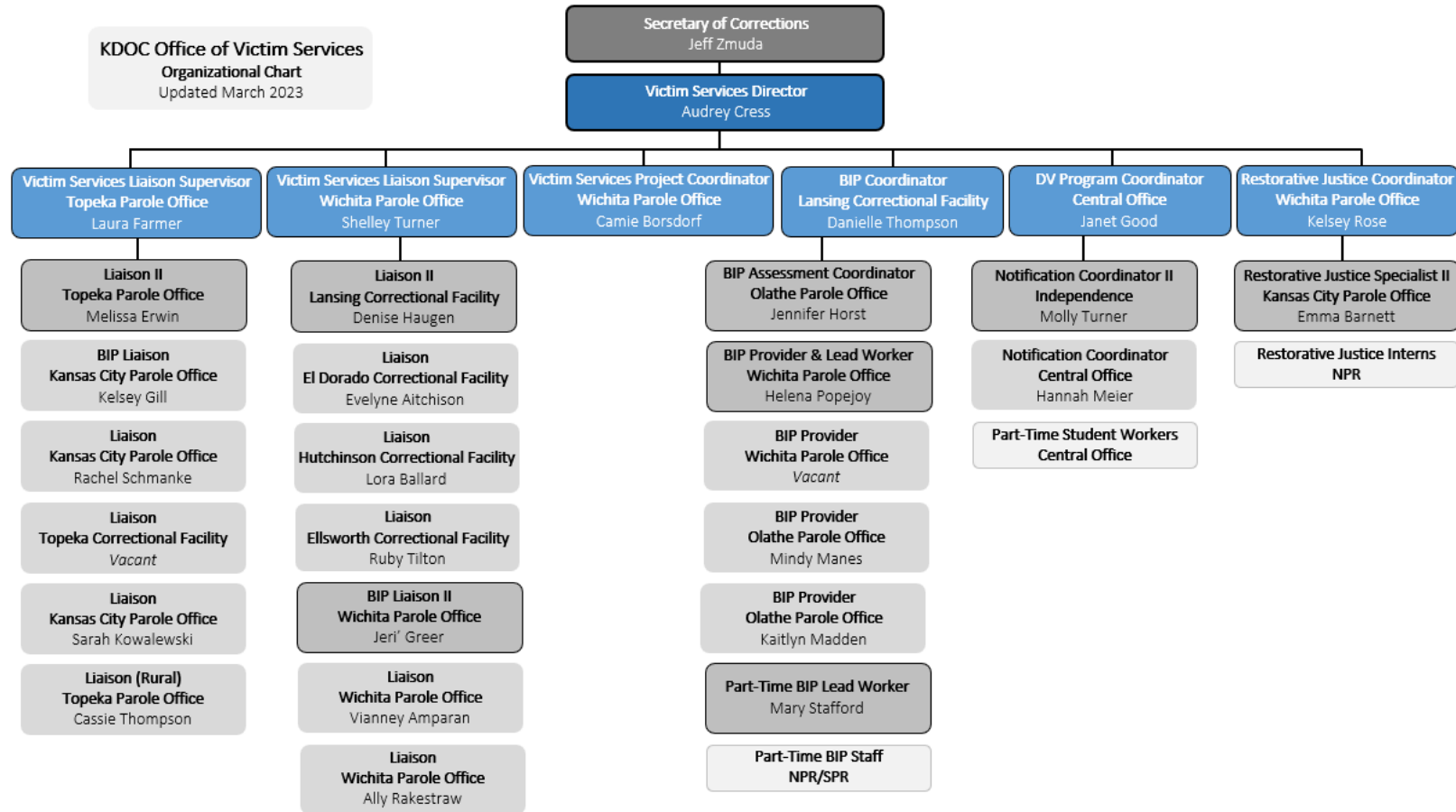
OVS Mission

KDOC OVS serves victims as a liaison within the criminal justice system and provides connection to community resources. Our focus is to promote safety through direct services to victims and programming for those who have caused harm. We are committed to working from an inclusive and victim-centered perspective.

OVS Vision

A correctional system where victim safety is central to all practices.

KDOC Office of Victim Services



Transportation Activity

The background of the slide is composed of several overlapping, semi-transparent purple geometric shapes. These shapes, which include triangles and polygons, are arranged in a way that creates a sense of depth and movement. The colors range from a light lavender to a deep, rich purple. The overall effect is modern and dynamic, complementing the clean, sans-serif typography of the title.

Defining Domestic Violence

Domestic violence is a pattern of abusive and coercive behavior used to gain and/or maintain domination and control over an intimate partner, or former intimate partner. It includes the use of illegal and legal behaviors and tactics that undermine the victim's sense of self, free will, and safety.

Identifying Domestic Violence within KDOC

Population at-a-glance

- ▶ Male facility population: 7,745
- ▶ Male parole population: 4,551
- ▶ Males with DV Designation: 583

As of November 7, 2022

Prevalence of Domestic Violence

- ▶ 90% of OVS liaison time is spent responding to victims of domestic violence.
- ▶ 25% of parole revocations are domestic violence related.

DV Screening Tool

- ▶ Have the police ever been called for something **that happened between you and a sexual partner, an ex-partner or someone you were living with, married to or dating?**
- ▶ Have you ever been arrested for, charged with or convicted of anything...
- ▶ Are you currently serving time or have you ever served time for anything...
- ▶ Do you currently have, or have you ever had a protection order, restraining order or cease correspondence filed against you?
- ▶ Have you ever attended or participated in Anger Management, DV Counseling or BIP?
- ▶ Have you ever been sanctioned on parole or probation or been revoked due to an incident...

Intake Questionnaire

Inmate Name: _____ KDOC#: _____

Date: _____ Staff Name: _____

Note: Your answers will be verified through law enforcement, court and criminal records.

1. Have the **police ever been called** for something that happened between you and a sexual partner, an ex-partner or someone you were living with, married to or dating?

☐ Yes

☐ No

If yes, how many times? _____

Name of the partner: _____ Relationship: _____

When: _____ Where: _____

What law enforcement agency responded? _____

What happened? _____

2. Have you ever been **arrested** for, charged with or convicted of anything against a sexual partner, an ex-partner or someone you were living with, married to or dating?

☐ Yes

☐ No

If yes, how many times? _____

Name of the partner: _____ Relationship: _____

When: _____ County: _____

What were you convicted of? _____

What happened? _____

3. Are you currently **serving time** or have you ever **served time** for anything against a sexual partner, an ex-partner or someone you were living with, married to or dating?

☐ Yes

☐ No

If yes, how many times? _____

Name of the partner: _____ Relationship: _____

When: _____ Where: _____

What were you charged with? _____

What happened? _____

More on back, Turn page over

4. Do you currently have, or have you ever had a protection order (PFA or PFS), restraining order or Cease Correspondence filed against you?

☐ Yes

☐ No

If yes, how many times? _____

Who filed it? _____ Relationship: _____

Type of order: ☐ PFA ☐ PFS ☐ Restraining Order ☐ Cease Correspondence

When: _____ County: _____

What happened? _____

Did you violate the order? ☐ Yes ☐ No How many times? _____

What happened when you violated the order? _____

5. Have you ever attended or participated in any of these programs? ☐ Yes ☐ No

☐ Anger Management

☐ Domestic Violence counseling

☐ Batterer's Intervention Program (BIP)

When: _____ Where: _____

Name of the program: _____

Why did you have to go? _____

If you attended BIP, did you complete the program? ☐ Yes ☐ No (select reason below)

☐ Found not appropriate

☐ Non-payment of fees

☐ Sentence discharge

☐ Unsuccessful completion

☐ Other _____

6. Have you ever been sanctioned on parole or probation or been revoked due to an incident involving a sexual partner, an ex-partner or someone you were living with, married to or dating?

☐ Yes

☐ No

If yes, how many times? _____

Name of the partner: _____ Relationship: _____

When: _____ Where: _____

What was the charge? _____

What happened? _____

Inmate Name: _____ KDOC #: _____

Inmate Signature: _____

Date: _____

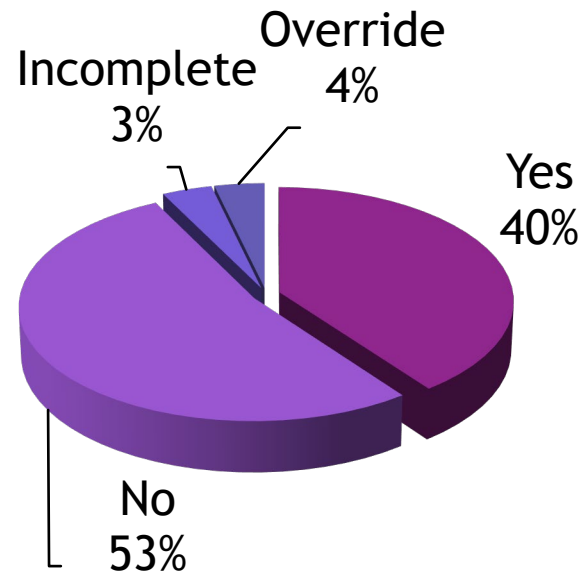
Office Use Only

1. Y N
2. Y N
3. Y N

4. Y N
5. Y N
6. Y N

DV Screening Tool Data

Self-Disclosed DV History



- ▶ Implemented July 1, 2014.
First four years of data:
 - ▶ 13,279 offenders screened
 - ▶ **40% self-disclosed history of DV**
 - ▶ 53% self-disclosed no history of DV
 - ▶ >.5% refused to complete the screening
 - ▶ 3% were incomplete
 - ▶ 4% received an override

DV Screening Tool Data

- ▶ 44% who self-disclosed a history of DV had a protection order
- ▶ 56% who self-disclosed a history of DV answered Yes to 3 or more questions
- ▶ 4% who self-disclosed a history of DV had the DV Designation

DV Screening Tool Comments

“...had a PFA from a messy divorce & agg battery - she was scared of me. I violated it because I wanted to see my kids at Christmas.”

“...ordered by KDOC to BIP but haven't done it yet.”

“...got agg battery & intimidation, attended DV counseling but violated my supervision...”

DV Screening Tool Comments

“...I broke her jaw in a fight while drinking...”

“...got an agg battery & went to DV counseling because community corrections ordered it...”

“... had a fight and killed her...”

“...put a loaded gun to her head & told her she had 30 seconds to get out before I blew her head off...”

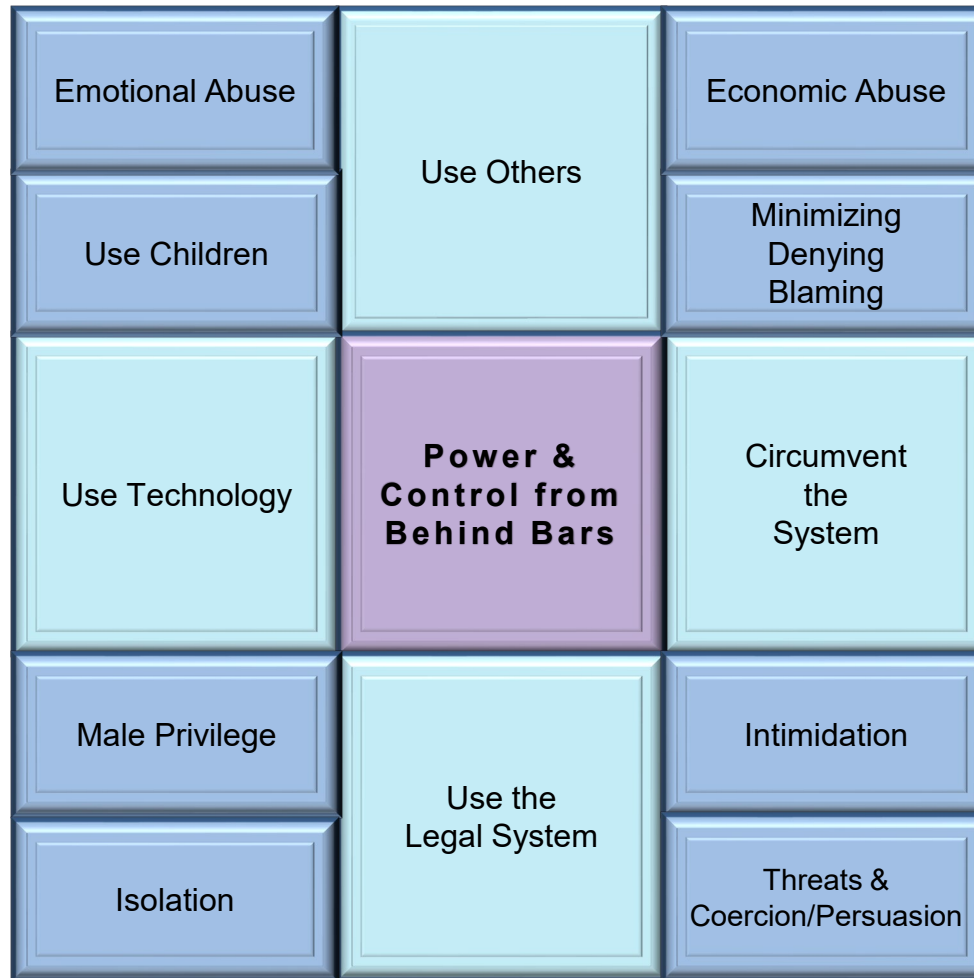
Domestic Violence Dynamics

The background of the slide features abstract, overlapping geometric shapes in various shades of purple. These shapes, including triangles and polygons, are layered to create a sense of depth and movement. The colors range from a light, almost white lavender to a deep, rich magenta. The overall composition is modern and minimalist, with the text positioned on the left side against a white background.



Power & Control Behaviors

Power & Control Behaviors



Using other people

- ▶ Following, watching, driving by
- ▶ Making presence known
- ▶ “Run into family/friends”
- ▶ Reporting back

Circumventing the system

- ▶ 3-way phone calls
- ▶ 3rd party letters & contact
- ▶ Violation of no contact order

Using the legal system

- ▶ Filing motions in court
- ▶ Establishing paternity
- ▶ Custody
- ▶ Visitation
- ▶ Grandparent rights
- ▶ Reports to child welfare systems

Using technology

- ▶ Cell phone
- ▶ Social media
- ▶ Call spoofing
- ▶ GPS devices
- ▶ Stalking behaviors

Appearance of Change Isolation Abuse

Community

Isolate

Eliminate Resources

Victim Dependent

Focus on him

Correctional Facility

Associate

Create Resources

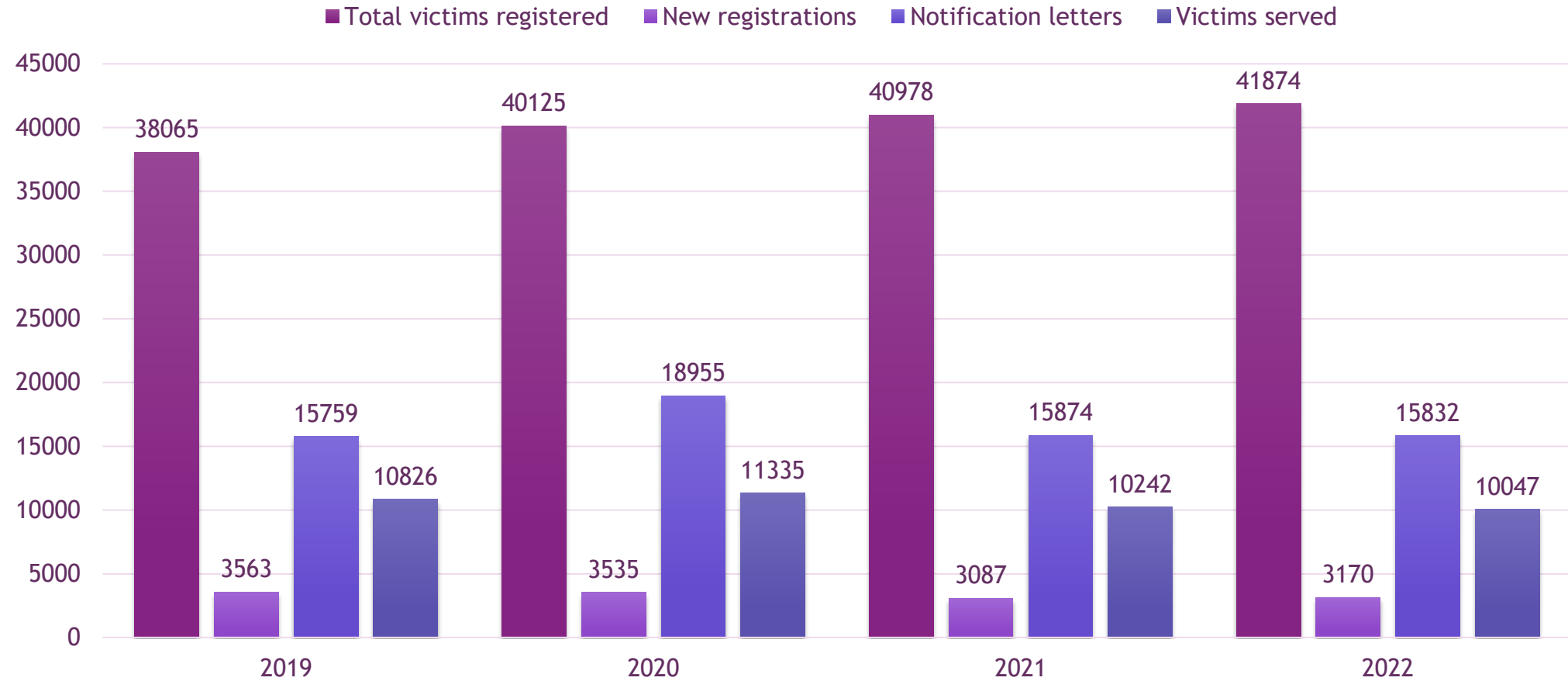
Offender Dependent

Focus on her

The background features a series of overlapping, semi-transparent purple geometric shapes, primarily triangles and polygons, creating a dynamic, layered effect. The colors range from light lavender to deep magenta. The shapes are oriented diagonally, with some pointing towards the top right and others towards the bottom left.

OVS Services

Victim Services FY19-FY22



Statewide Notification Services

- ▶ Inmate releases*
- ▶ Absconder status*
- ▶ Expiration of sentence*
- ▶ Death*
- ▶ Escape*
- ▶ Interstate Compact*
- ▶ Clemency application*
- ▶ Public comment session+
- ▶ Assignment to work release+
- ▶ Minimum custody/Community service work assignment
- ▶ Registration
- ▶ Early discharge
- ▶ Return to custody
- ▶ Sexually Violent Predator process
- ▶ Media contact

* Statutory requirement

+ Internal policy requirement

Facility Liaison Services

- **Current Staffing Pattern:** 6.0 FTE (includes 1 VSL Supervisor and 1 VSL II)
- **Service Area:** Statewide – covering 9 state prison facilities
- **Staff Locations:** Lansing Correctional Facility, Hutchinson Correctional Facility, El Dorado Correctional Facility, Topeka Correctional Facility, Ellsworth Correctional Facility (also covers Norton, Winfield, and Larned Mental Health Correctional Facilities), Wichita Parole Office (also covers Wichita Work Release Facility)
- **Services Provided:** Information, Systems Advocacy, Visitation Screening, Cease Correspondence, Release Planning, Public Comment Session Advocacy, Staff Training at new employee orientation and during annual staff training to identify possible staff victims.

Parole Liaison Services

- **Current Staffing Pattern:** 11.0 FTE (Includes 1 VSL Supervisor and 2 VSL IIs)
- **Service Area:** Statewide – 2 parole regions
- **Locations:** Topeka Parole Office, Wichita Parole Office, Olathe Parole Office, and Kansas City Parole Office
- **Services Provided:** Information, Systems Advocacy, Wrap-Around Safety Planning, Morrissey Hearing Assistance, Public Comment Session Advocacy, Staff Training, DV victim contact and assistance while an supervised individual attends the KDOC BIP

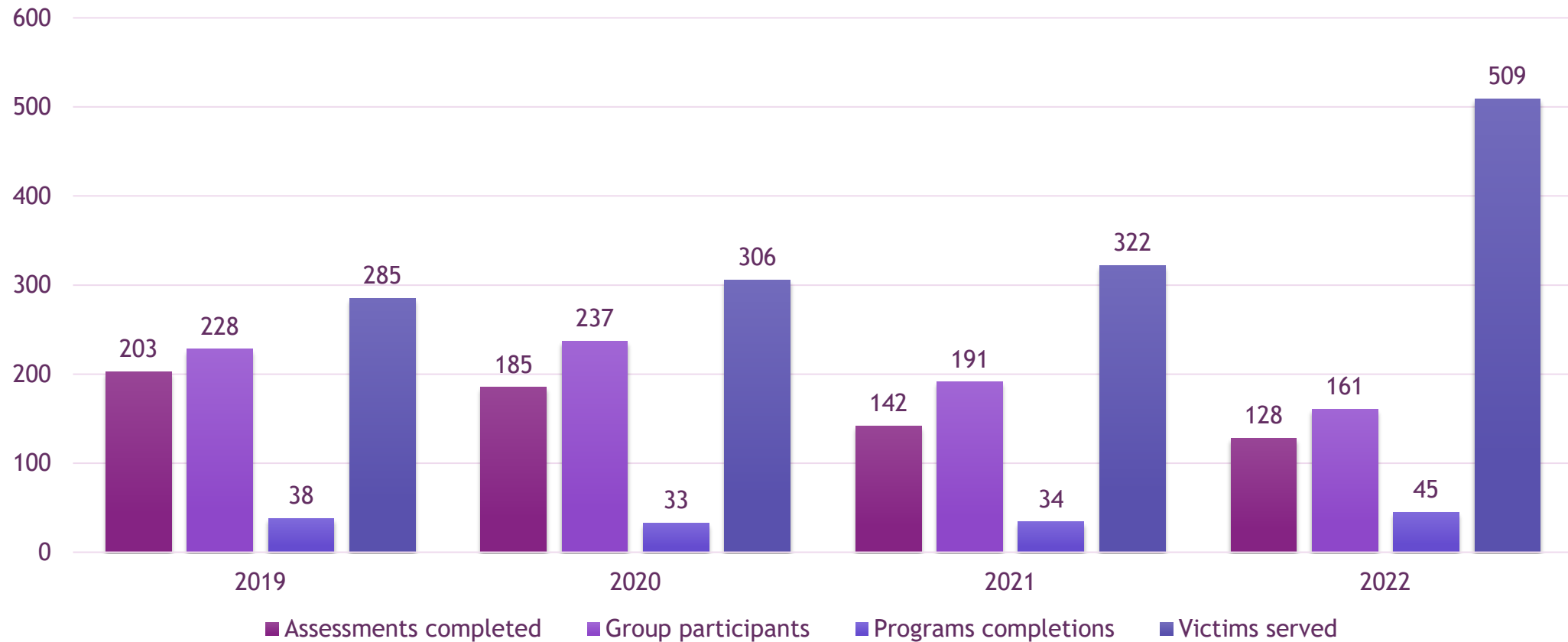
Batterer Intervention Programming

- **Current Staffing Pattern:** 5.0 FTE (Includes 1 BIP Coordinator and 1 Statewide Assessment Coordinator) – additional 6 part-time staff
- **Service Area:** Statewide – 2 parole regions
- **Locations:** Lansing Correctional Facility, Wichita Parole Office, Hutchinson Parole Office (also serves Reno County Community Corrections), Olathe Parole Office, and Kansas City Parole Office
- **Services Provided:** Closed group in facility, open group in parole

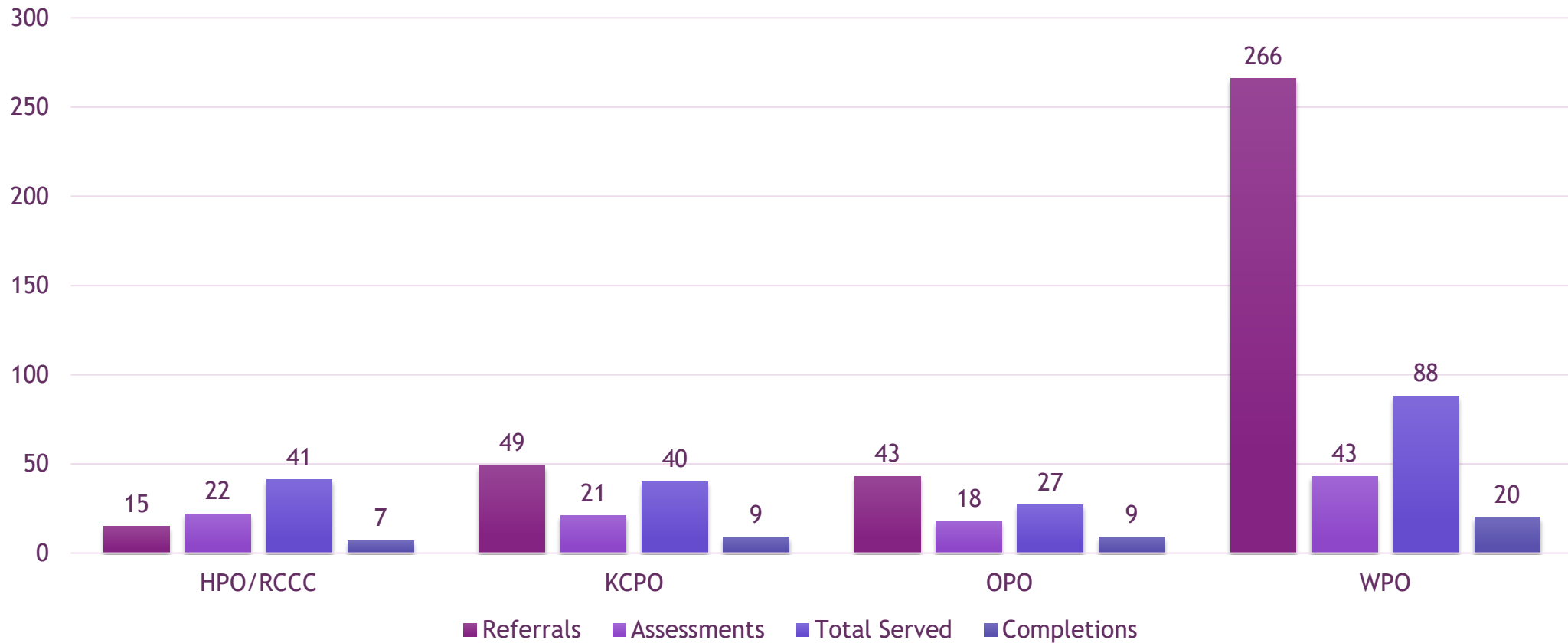
Restorative Justice Services

- ▶ **Apology Letter Bank:** A monitored program that allows those who have caused harm the opportunity to write a letter of apology to the victim(s) of their crime.
- ▶ **Victim Impact Class:** The purpose of the class is to encourage participants to consider how victims and victims' families are harmed by crime. This includes understanding their own victimization and considering how to repair harm they have caused.
- ▶ **Victim/Offender Dialogue:** A VOD is structured process that provides victims of violence an opportunity to have a face-to-face conversation with the offender who harmed them in a safe setting with the assistance of two trained facilitators.

BIP Services FY19-FY22



BIP Services by Site - FY22




So What?

- ▶ What is the best outcome to increase victim safety and accountability in those who cause harm?
- ▶ COLLABORATION

We didn't do it alone...

County and Review Board
Prisoner Re-entry Program
Governor's Grants Program
Local District Attorneys
State DV Corrections
Local SA Coalition
Community Subcommittee
Reception and Diagnostic Unit
DV Homicide Unit
Sex Offender Management Board
KDOC Management Team/Witness Coordinators
Parole Officers
Local Law Enforcement
Local Batterer Intervention
Facility Staff
Parole Directors
Prevention Programs

WHEW!

The background features a series of overlapping, semi-transparent purple triangles and polygons that create a dynamic, geometric pattern. The colors range from light lavender to deep magenta. The text is positioned on the left side of the image, set against a white background.

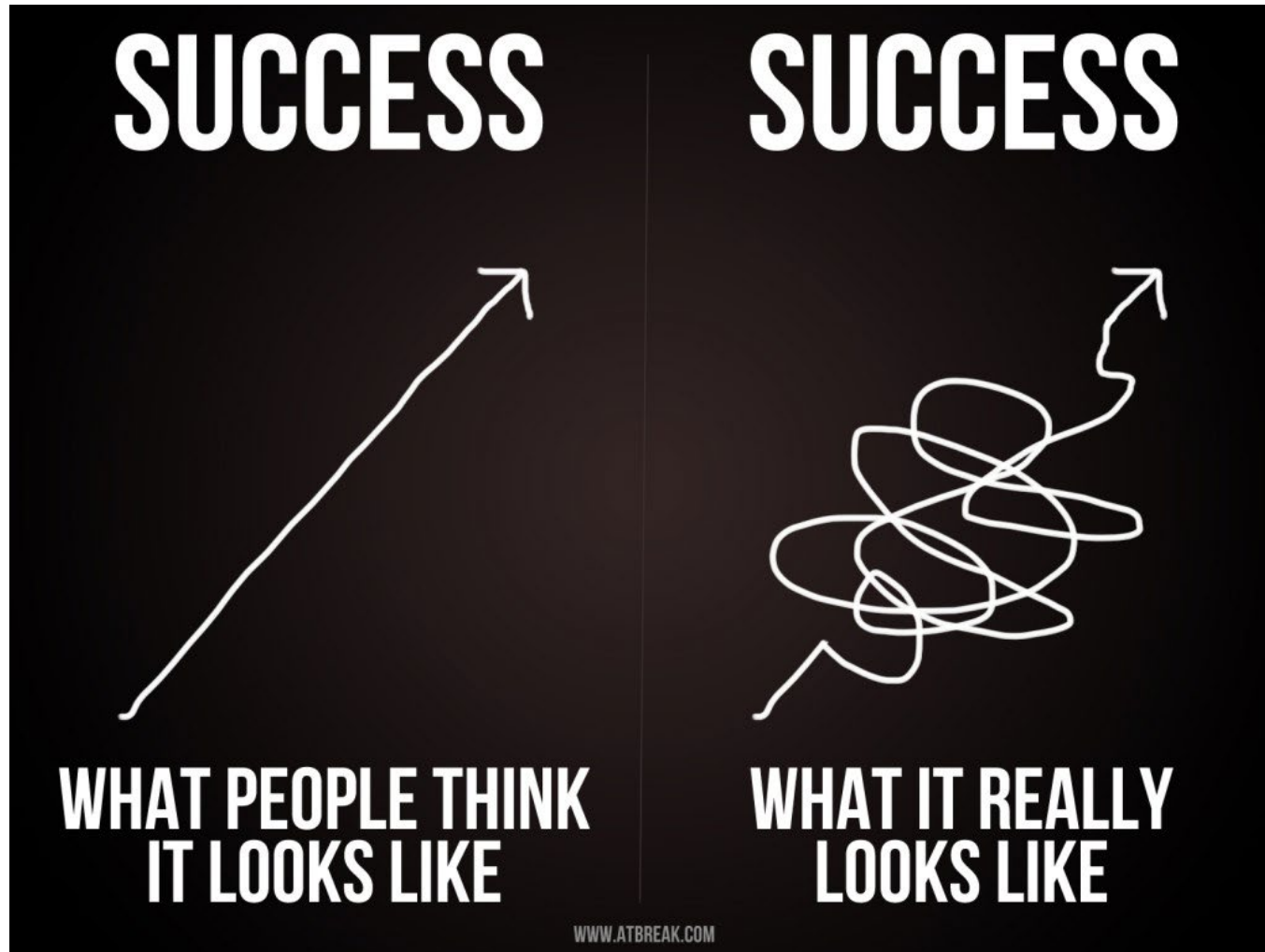
What opportunities
do you have for
increasing
collaboration in
your community?

- ▶ When thinking about your system's response to domestic violence:
 - ▶ Who are your existing partners?
 - ▶ Where are your challenges?
 - ▶ What would you need/what would be helpful?
 - ▶ What can ***you*** do?
 - ▶ Where would it be *easy* to take steps forward?

Take a
minute...

What commitment
can you make
TODAY?

This isn't easy...



The background features a series of overlapping, semi-transparent purple triangles and polygons that create a dynamic, geometric pattern. The colors range from light lavender to deep magenta. The text is positioned on the left side of the slide, set against a white background.

Key Takeaways

Questions??

Email me!
audrey.cress@ks.gov

Thank you!