

Translating Data into Action: What Story Does the Data Tell Us?

Presenter: Cris Loomis, MPA, CPM



Overview

- Departmental Mission/Vision
- Ten Essential Public Health Services
- JCHDE Clinic Numbers
- AIMS Study
- Change in Clinical Services
- Q & A

JCDHE Vision and Mission

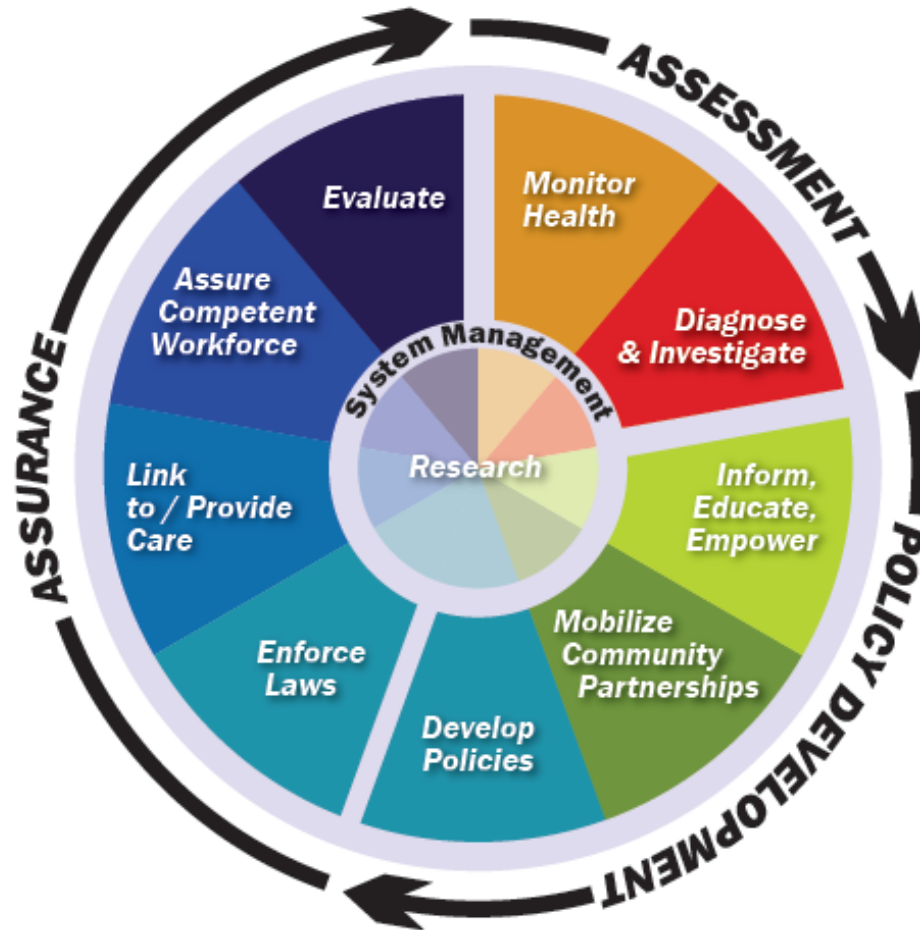
Our Vision:

The Innovative Leader for Community Health
and Environmental Protection

Our Mission:

To Protect the Health and Environment,
Prevent Disease and Promote Wellness for All
Who Live, Work and Play in Johnson County
through Exceptional Public Service

Ten Essential Public Health Services



Services Offered

- Services:
 - Family Planning by appointment and drop in
 - STI Clinic-Drop in
 - Prenatal Program-appointment only
 - Immunizations-drop in only
 - Colposcopy/LEEP clinic
 - LARC clinic-by appointment
- County Health Officer and Medical Advisor - Joe LeMaster, MD

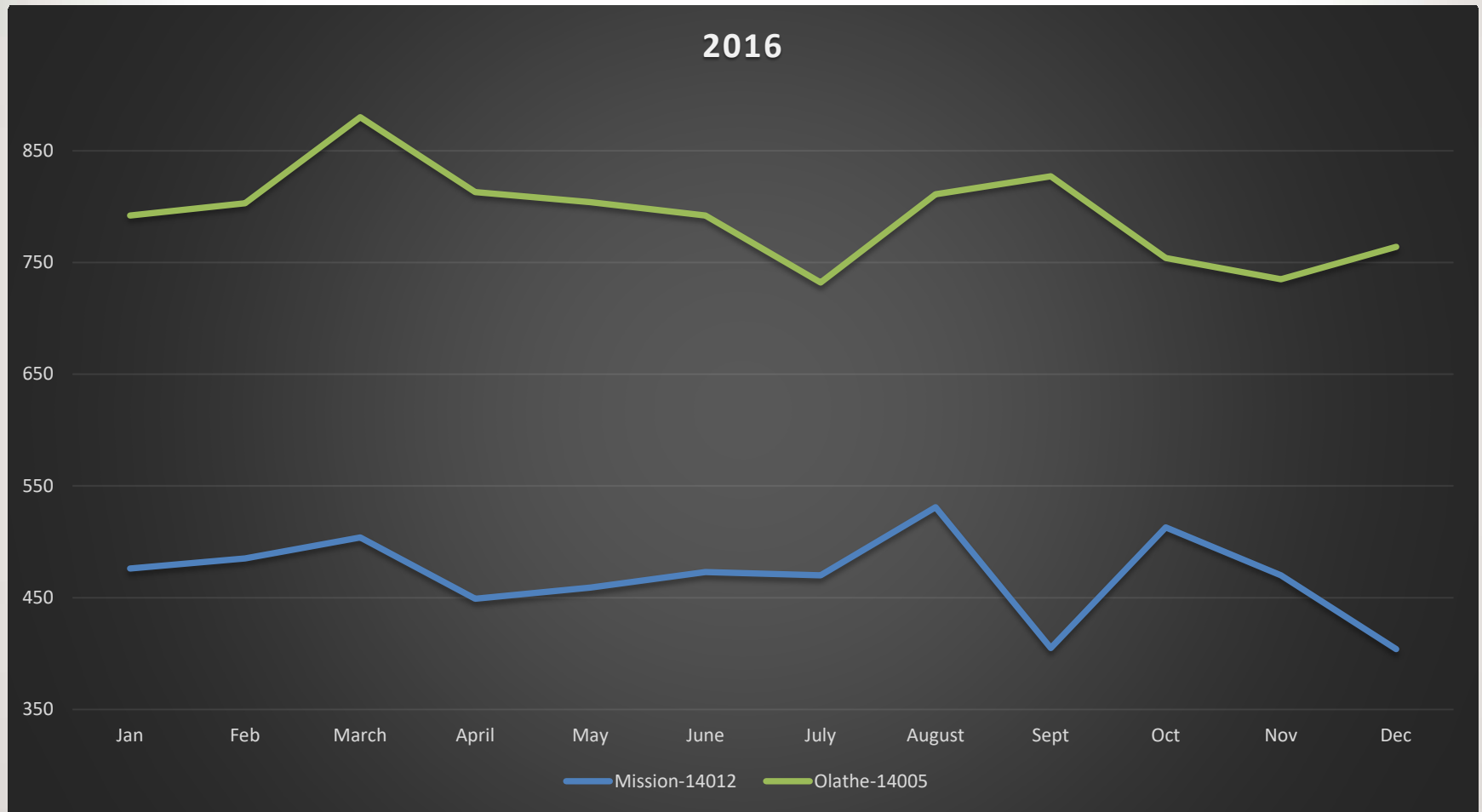
JCDHE by the numbers

- 2017 Visits = 15,366 (FP/ST/PN)
- 2017 Clients seen = 10,398 (FP/ST/PN)
- Johnson County population = 580,000
- Two clinic sites: 15 miles apart
- 5 APRN, 6 Nurses, 1 CNA, 3 Social workers, in house lab with 4 Lab Techs

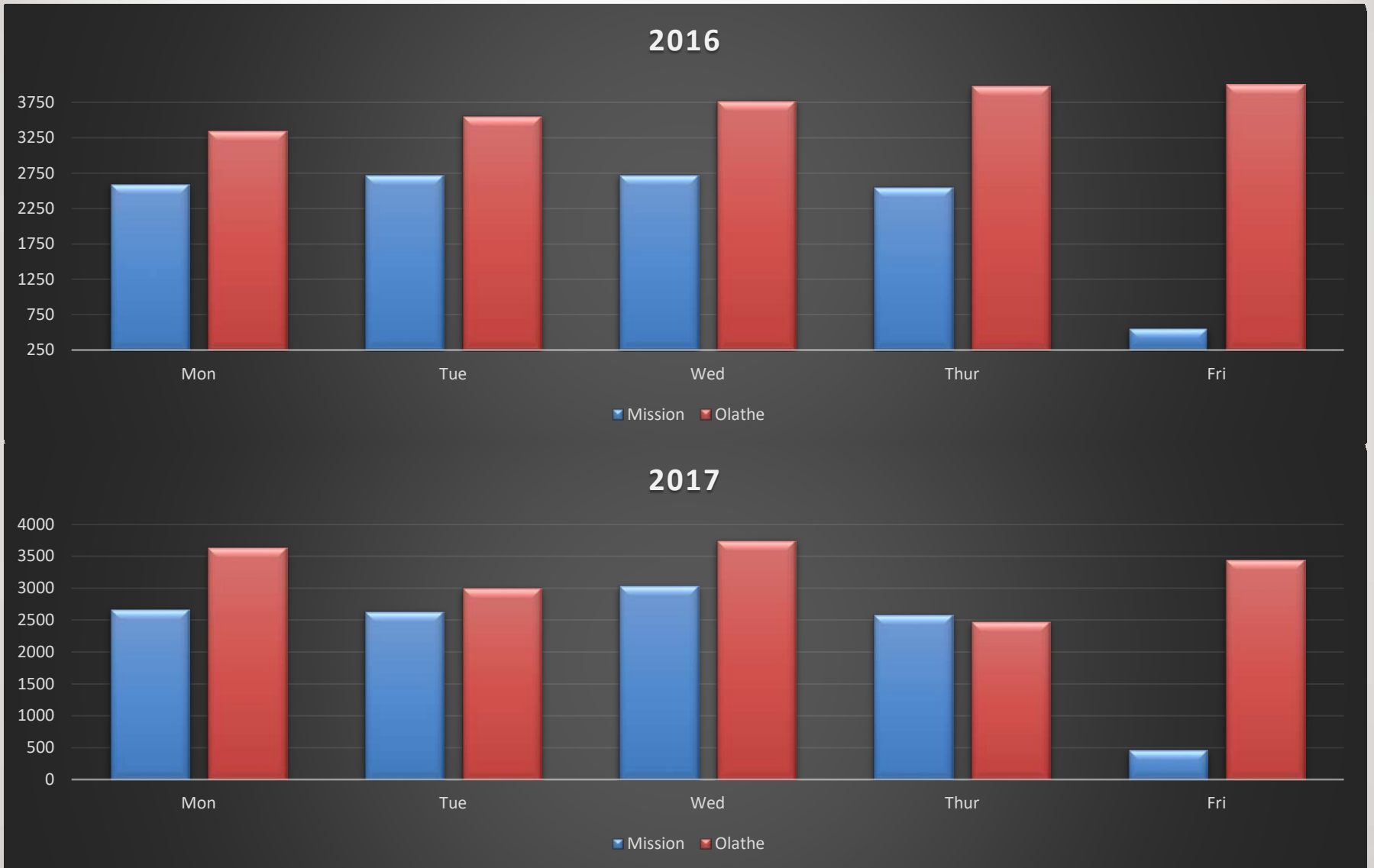
2017 Visits Per Site



2016 Visits Per Site



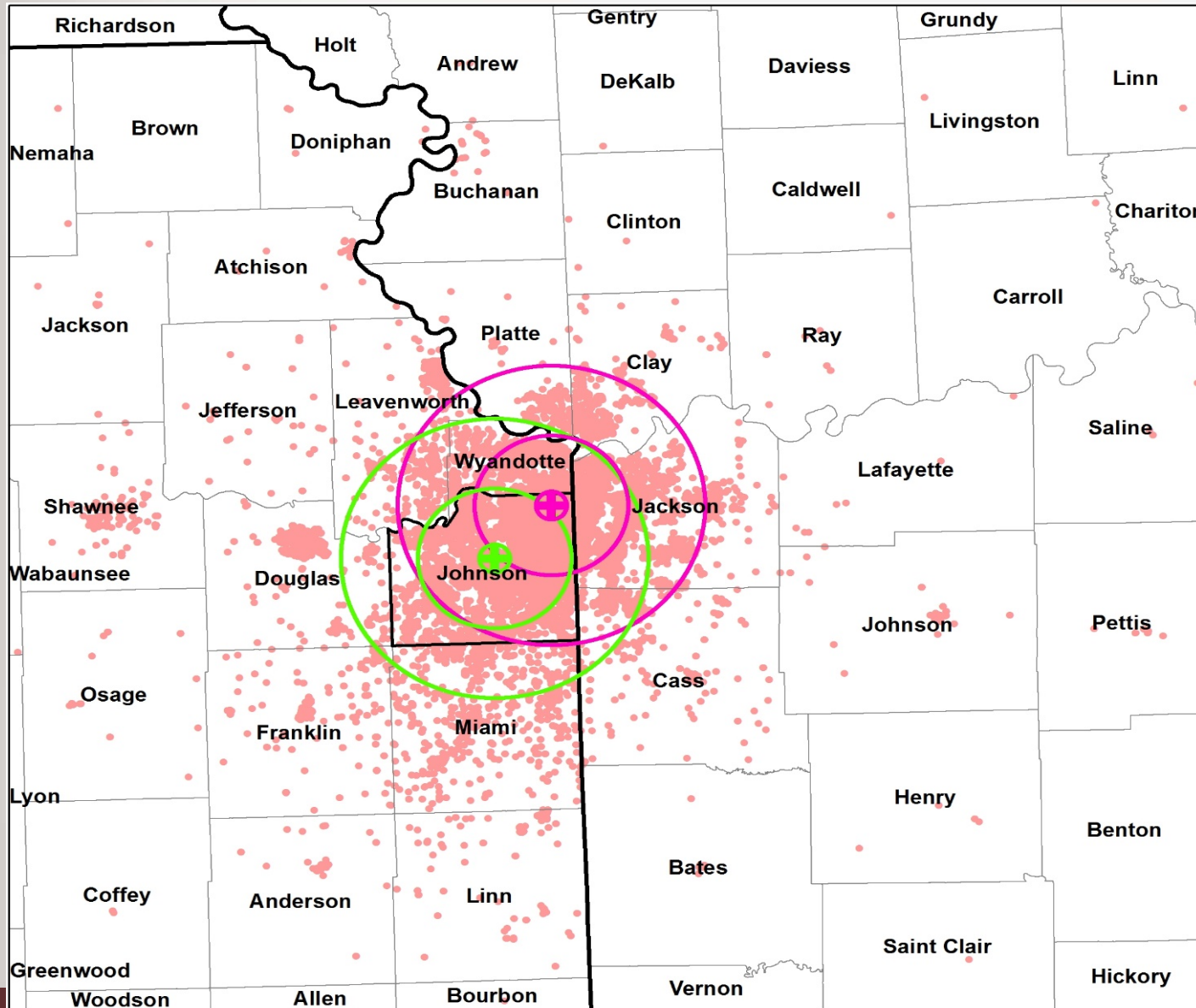
2016 & 2017 Days of the Week



Mapping Study

AIMS Study-
14 years of Data
2003-2017

Spatial bounding box for analyses

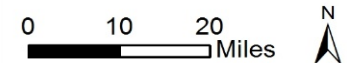


- + Mission Clinic
- + Olathe Clinic
- 2, 10, 20-mile-radius rings around**
- Mission Clinic
- Olathe Clinic
- Patient home address (latest known)

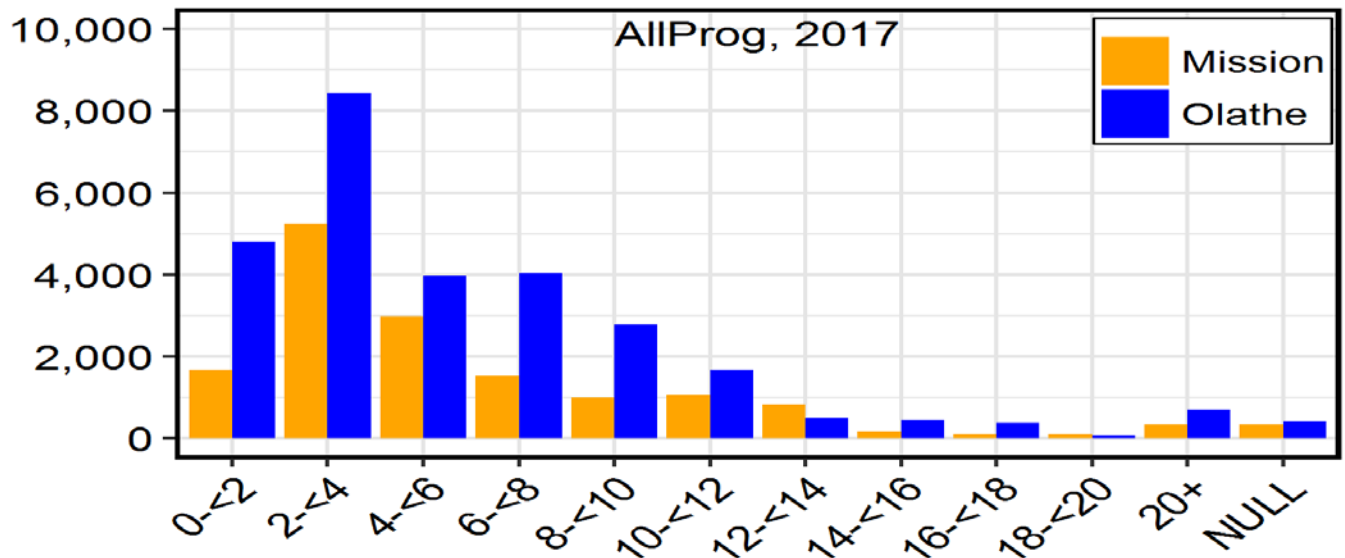
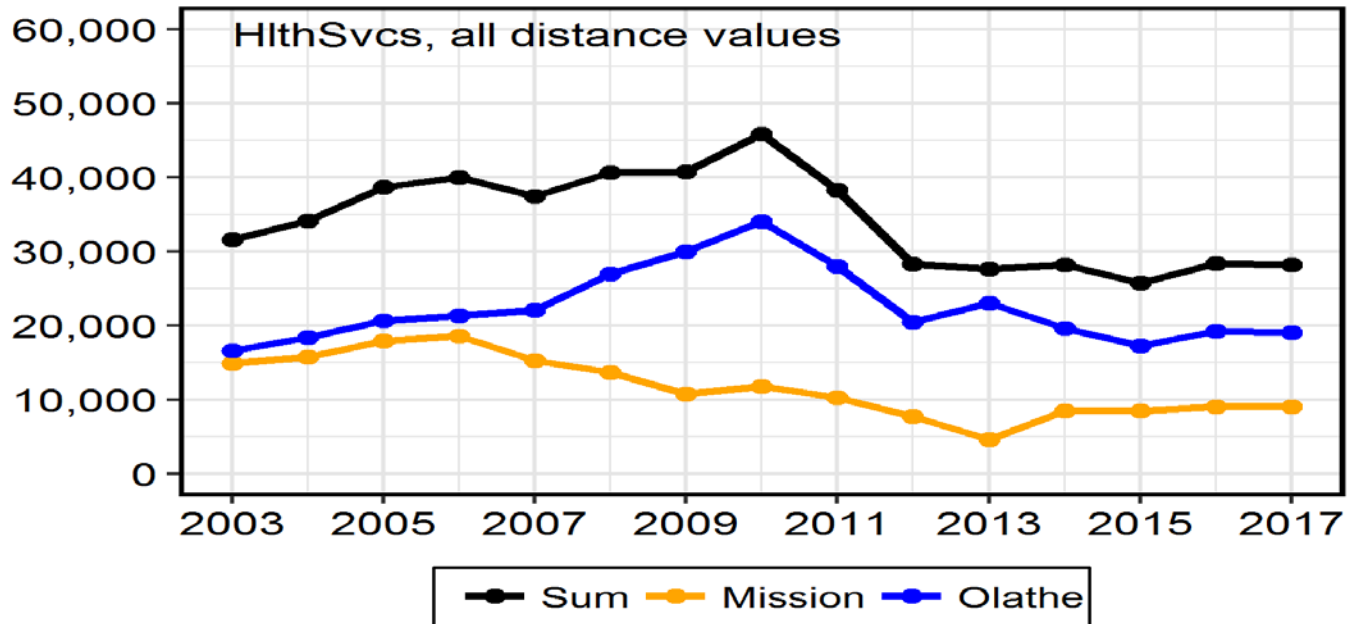
Number of encounters by county (2003-2017 all data)

807,487 encounters

89% Johnson
5.6 % Wyandotte
2% Jackson, MO

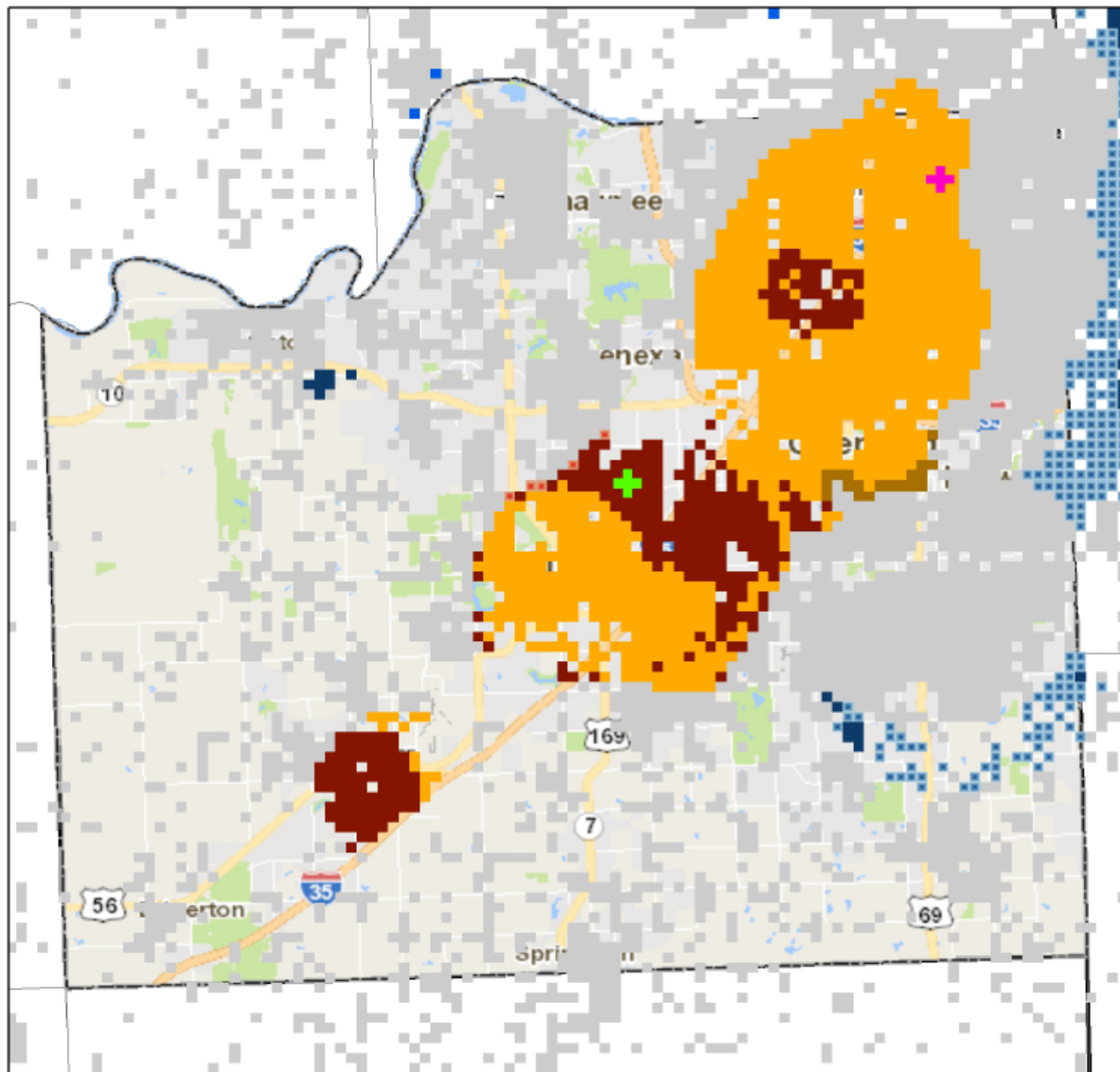


Analyses results 1 – graphs, examples



Analyses results 2 – maps of Emerging Hot Spot Analysis

Emerging Hot Spot Analysis, AllProgAllLoc200320173M1320Ft



EHSA_AllProgAllLoc200320173M1320Ft

✚ Mission Clinic

✚ Olathe Clinic

EMERGING HOT OR COLD SPOTS

☐ <all other values>

☐ New Hot Spot

☐ Intensifying Hot Spot

☐ Persistent Hot Spot

☐ Diminishing Hot Spot

☐ Historical Hot Spot

☐ New Cold Spot

☐ Intensifying Cold Spot

☐ Persistent Cold Spot

☐ Diminishing Cold Spot

☐ Historical Cold Spot

Neighborhood distance: 10560 feet

Neighborhood time step intervals: 1

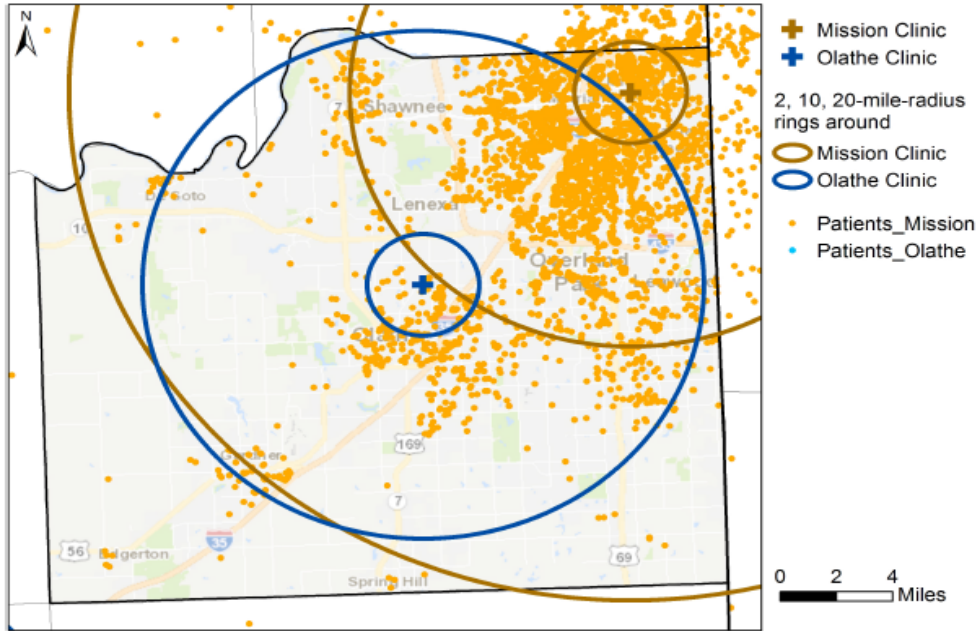
	Hot	Cold
New	0	3
Consecutive	1	27
Intensifying	5	557
Persistent	332	741
Diminishing	1035	192
Sporadic	185	1135
Oscillating	0	16
Historical	19	5

0 2 4 Miles

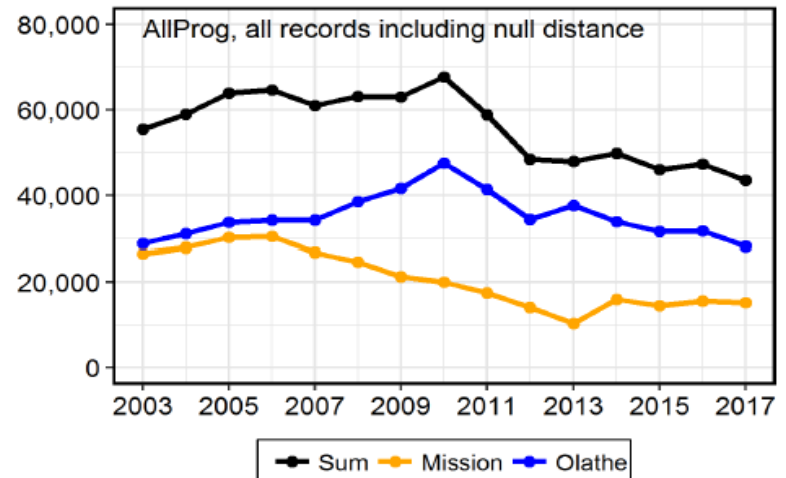
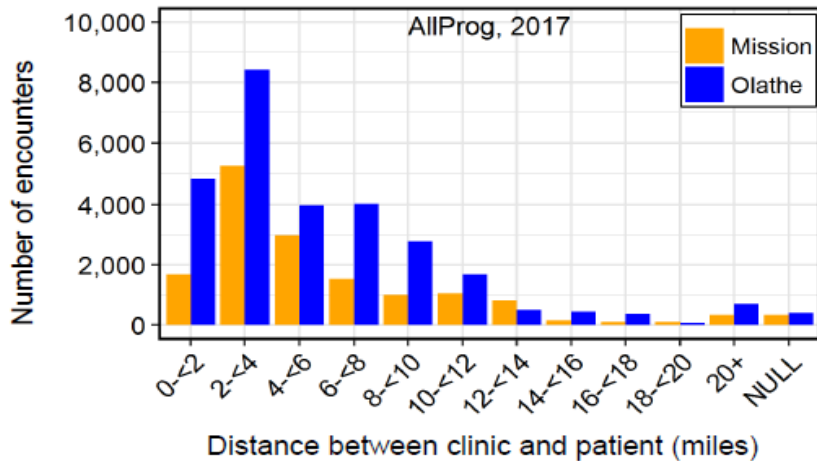
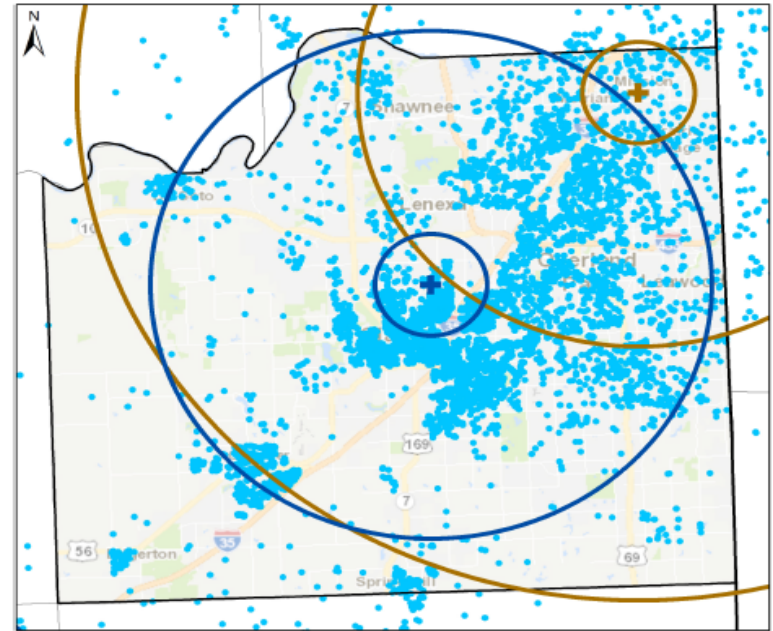


All Programs 2017 by Site by Distance

Encounters_AllProg Mission 2017



Encounters_AllProg Olathe 2017



“October Surprise”

- July, 2017-Proposal was presented to Staff on potential clinical changes based on data.
- August 16, 2017-RN recommendations based on SBAR-Situation, Background, Assessment & Recommendation
- August 25, 2017-ARNP meeting = decision time

“October Surprise” cont’d

- Outcomes: Shift services where they are needed most; all prenatal care shifted to Olathe clinic.
- Mostly drop in services at Mission clinic with built in Open Access
- Open Access is defined as open appointment slots for same day, 1 hour slot to allow flexibility for drop ins.
- All effective October 2, 2017

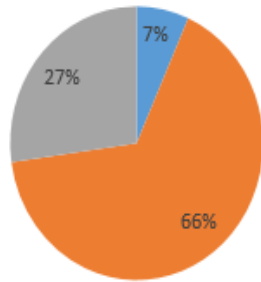
“October Surprise” cont’d

- November 17, 2017-Plus/Delta check in, what is going well/need to change?
- January 26, 2018-check in-Open Access concept abandoned
- May 2018 re-evaluation

2017 Show Rates by Appointment/Clinic Type

Count of Visit_type

FP Annual



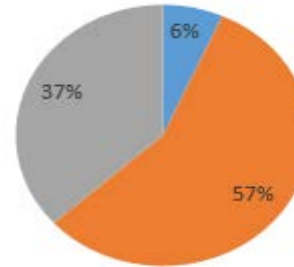
Disposition ▾

- Cancelled
- Kept
- Missed
- (blank)

Visit_type ▾

Count of Visit_type

FP Initial



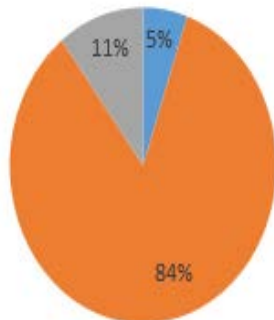
Disposition ▾

- Cancelled
- Kept
- Missed

Visit_type ▾

Count of Visit_type

Prenatal intake



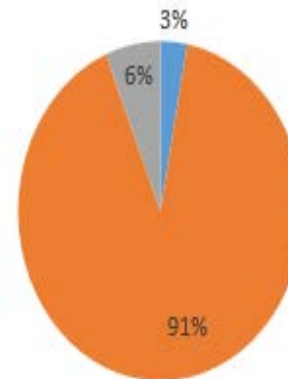
Disposition ▾

- Cancelled
- Kept
- Missed

Visit_type ▾

Count of Visit_type

Prenatal Revisit



Disposition ▾

- Cancelled
- Kept
- Missed

Visit_type ▾

Appointment vs. Drop In

- Question: Why would we continue to hold appointments for patients that do not show up 50% of the time?
- Answer: we should not, it is a waste of resources.

What are your thoughts?



Sources:

- <http://aims.jocogov.org/> Automated Information Mapping System
- Johnson County Department of Health and Environment
<https://www.jocogov.org/dept/health-and-environment/home>

Questions?

Contact Information:

Cris Loomis

o: 913-477-8346

c: 913-982-6685

cris.loomis@Jocogov.org