

Adoption. Activation. Engagement.



Forward, Together: The Strategic Plan

Follow Up: Priorities Town Hall (September 2018)

- Theme: No census on definition of shared governance.
 - Response: Shared Governance Forums – This fall
- Theme: Desire to have access to data that informs decisions
 - Response: Data-Sharing – November 1
 - EAB/Hanover Reports
- Theme: Lack of clarity re: processes used to make decisions
 - Responses: Creating a Trustworthy Process Town Hall – This Spring
Decision Making Matrix

Strategic Plan

Vision:

Wichita State University is internationally recognized as the model for applied learning and research.

Mission:

The mission of Wichita State University is to be an essential educational, cultural and economic driver for Kansas and the greater public good.



The History of this Plan

- 2012-2013 University Plan
- June 2013 KBOR Approval
- 2013-2014 College Plans
- 2014-2016 Infrastructure
- 2017-present Transition



Seven Ongoing Goals

- **Applied Learning: guarantee** an applied learning or research experience for **every student** by each academic program.
- **Interdisciplinary:** pioneer an **educational experience** for all that integrates interdisciplinary curricula across the university.
- **Community & industry partnerships:** capitalize systemically on relevant existing and emerging societal and economic trends that increase **quality educational** opportunities.
- **Innovation: accelerate** the discovery, creation, and transfer of new knowledge.
- **Culture:** empower **students** to create a campus culture and experience that meets their changing needs.
- **Inclusion:** be a campus that reflects—in **staff, faculty, and students**—the evolving diversity of society.
- **Assessment/Incentives/reward:** create a **new model** of assessment, incentive, and reward processes to accomplish our vision and goals.



- Dashboard Metrics
 - Enrollment
 - R&D Expenditures
 - Undergraduate Job Relevance
 - Intellectual Property Disclosures
 - Patents Filed
 - Licensing Agreements



Adoption:

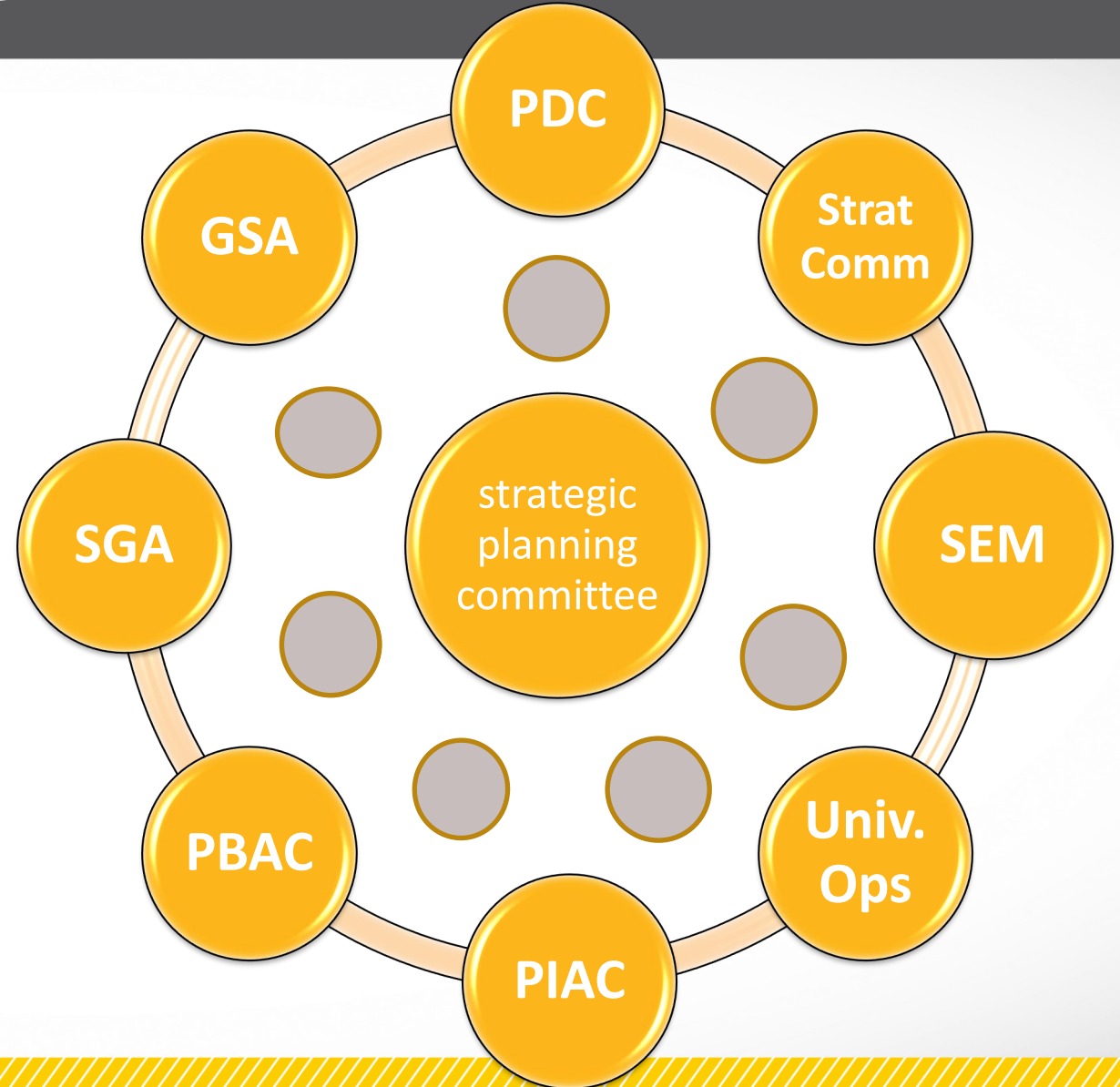
- Everything in the folder
 - Vision
 - Mission
 - Values
 - Priorities
 - Shocker P.R.O.U.D





Forward Together: Activation

- interdisciplinary
- innovation
- community & industry partnerships
- campus culture
- innovation
- inclusion
- assessment/incentives/awards





Activation teams:

- Chair & Chair-elect
- (4 + 4 + 4 + 4)+
- Team work
 - SWOT
 - Crucial Conversations
 - Recommendations



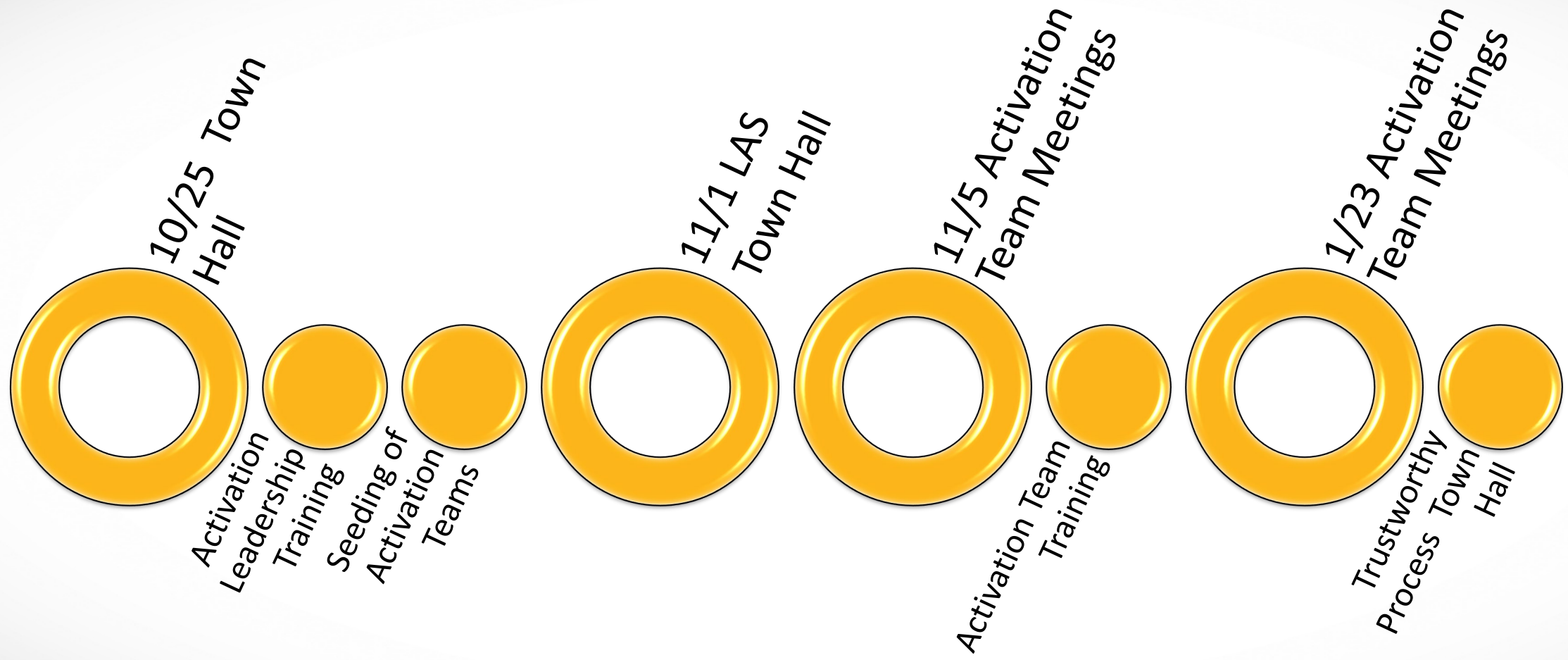
Today's Questions

(10 minutes each)

- Where has progress been made on this on-going goal?
- Where should future work focus?
- What impact would achievement of this goal have at WSU and beyond?



Timeline for Activation



How to remain involved: Commit!

- Attend November 1st LAS Town Hall
- Attend Activation Team Meetings – November 5th (Spring dates are on the websites)
- Engage in Shared Governance Forums (Dates TBA)
- Attend upcoming LAS Town Hall (November 1st)
- Stay tuned to our progress @ www.wichita.edu/strategicplan
- Engage your circle of influence in conversations about the strategic plan