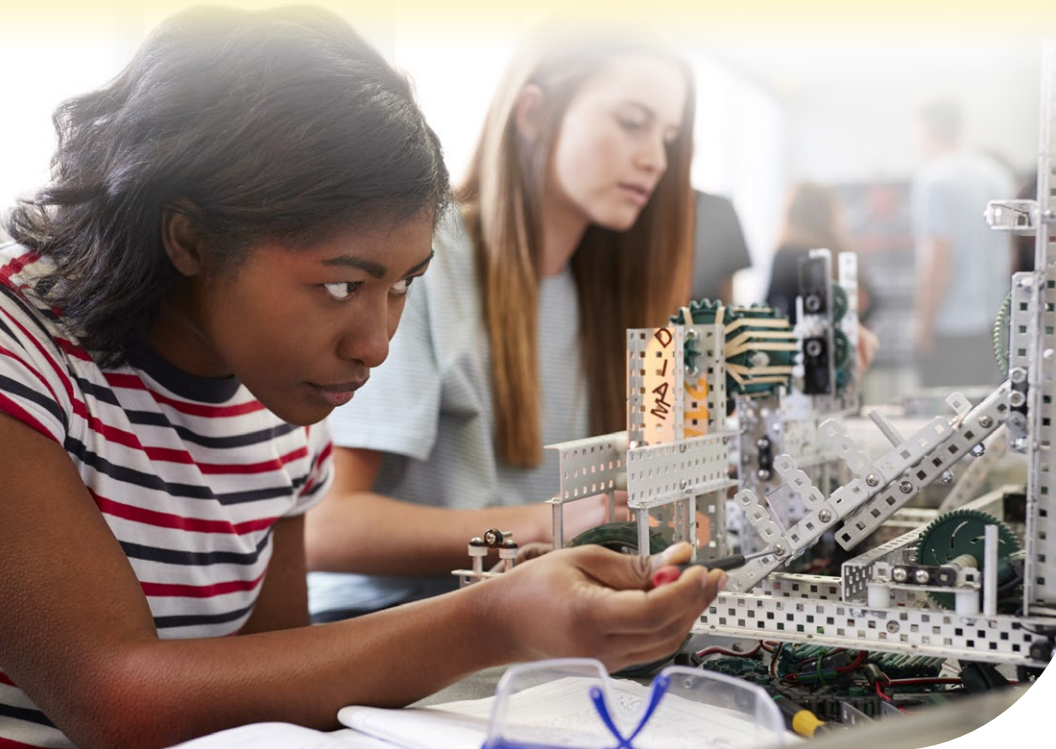




WICHITA STATE  
UNIVERSITY

COLLEGE OF **ENGINEERING**



# Introduce a Girl to Engineering Day

Wichita State University | College of Engineering

**FEBRUARY 22, 2024**



# WELCOME

**The College of Engineering at Wichita State University welcomes you to the second annual Introduce a Girl to Engineering Day (IGED) event!**



In the year 2020, the United States Census reported that, depending on the specialty, women only represented nine to 32% of all professional engineers. Although these numbers are growing, they are a reflection of the gap in passion for engineering between men and women. While engineering is considered a male-dominated profession, it is important for the health and safety of everyone that engineers are representative of the population.

An engineer is a person who wants to use creative solutions for important problems facing any given community; whether a problem is inevitable or manmade, it is the job of an engineer to figure out how to combat it. There are many types of engineers, and you will have access to some of these types throughout your experiences today!



The goal of the IGED event is to encourage young women to consider a degree in Science, Technology, Engineering and Math (STEM), with a major emphasis on engineering and computing.

# SCHEDULE OF EVENTS

**9:45 A.M.**  
Check-in Begins

---

**10:00 A.M.**  
Facilitated Icebreakers

---

**10:15 A.M.**  
Welcome - Dean Muscat

---

**10:20 A.M.**  
Speaker - Melissa Rocha

---

**10:50 A.M.**  
Industry Fair  
RSC 2nd Floor

---

**11:55 A.M.**  
Lunch

---

**12:10 P.M.**  
Speaker - Cindy Hoover

---

**12:40 P.M.**  
Long STEM Activity

---

**1:50 P.M.**  
Conclusions & Release

---

# SPEAKERS

## Melissa Rocha

Melissa Rocha is a biomedical engineer who graduated from Wichita State University in May 2022. She works as a clinical account specialist for Biosense Webster, a Johnson & Johnson company. As a clinical account specialist, Melissa provides 3D mapping support and serves as a trusted advisor to physicians for heart arrhythmia cases. She is currently working as a lead on a project at Saint Francis Hospital, a large Biosense Webster account in Tulsa, Oklahoma.



## Cindy Hoover

Cindy Hoover is a Wichita State University graduate with a bachelor's degree in electrical engineering. She started her professional journey at Koch Industries. Cindy later obtained a Master of Business Administration from Friends University. In the final 15 years of her corporate career, she served as an executive at Spirit AeroSystems. As vice president of Research and Technology at Spirit AeroSystems, Cindy drove technical innovation through expansion and diversification. She has been involved with the Society of Women Engineers for more than 35 years, acting as treasurer and president, and she has been involved with various other Kansas community organizations, including chairing the WSU Alumni Association. Since retirement, Cindy has focused on STEM education and mentorship programs to support aspiring leaders in the field.



GOLD SPONSOR

GOLD SPONSOR

**AIRBUS**



COLLEGE OF **ENGINEERING**

## BRONZE SPONSORS



VISIT  [WICHITA.EDU/ENGINEERING](https://www.wichita.edu/engineering)

**Like and  
follow us  
on social!**

 @WSU\_ENGINEERING

 FB.COM/WSUENGINEERING

 @WSUENGINEERING

 LINKEDIN.COM/SHOWCASE/  
WICHITA-STATE-COLLEGE-OF-ENGINEERING