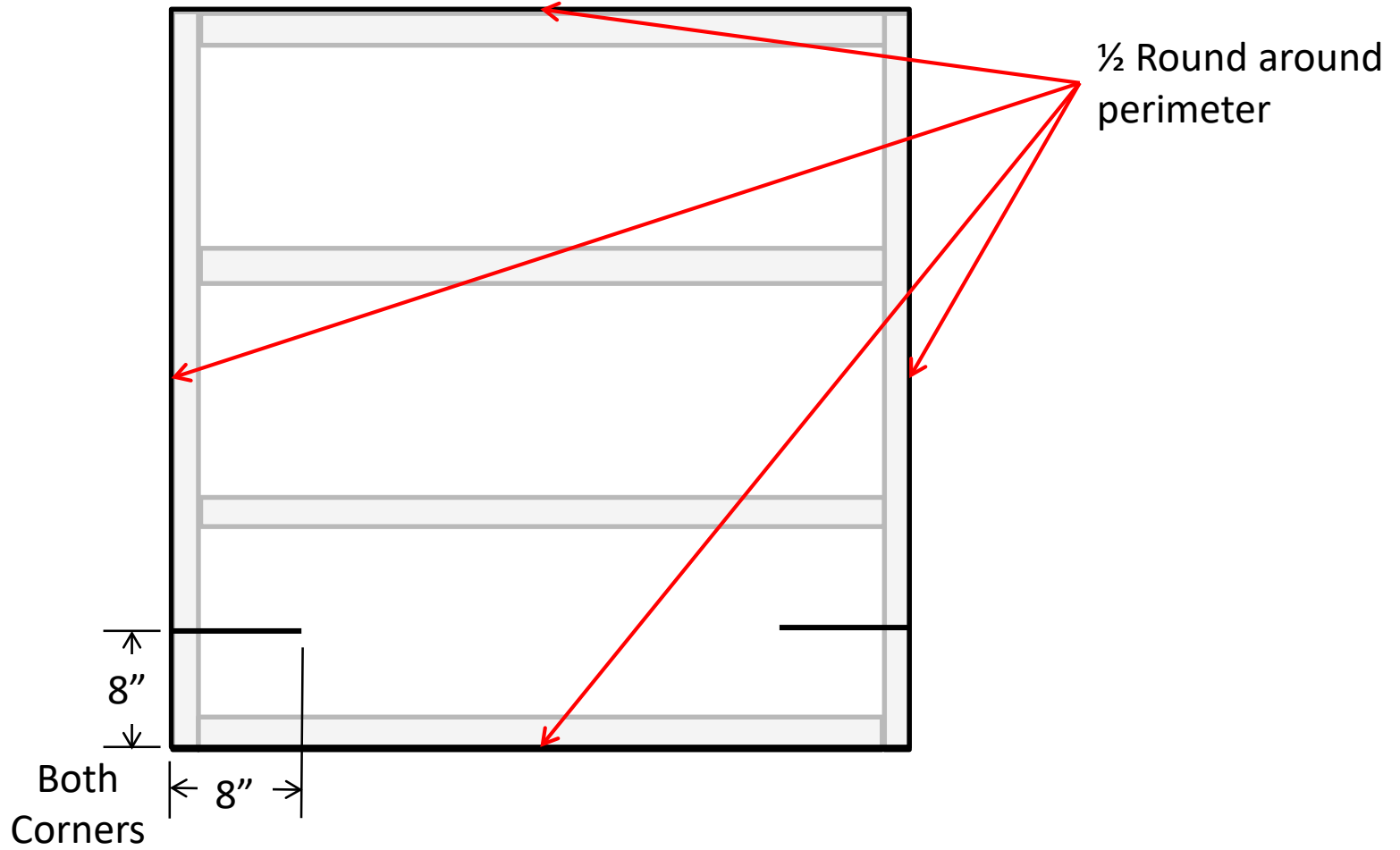


Assemble 1" x 2" structure and the 5mm x 4' x 4' Luan Panel as shown above using glue and screws as required.

Sort it!

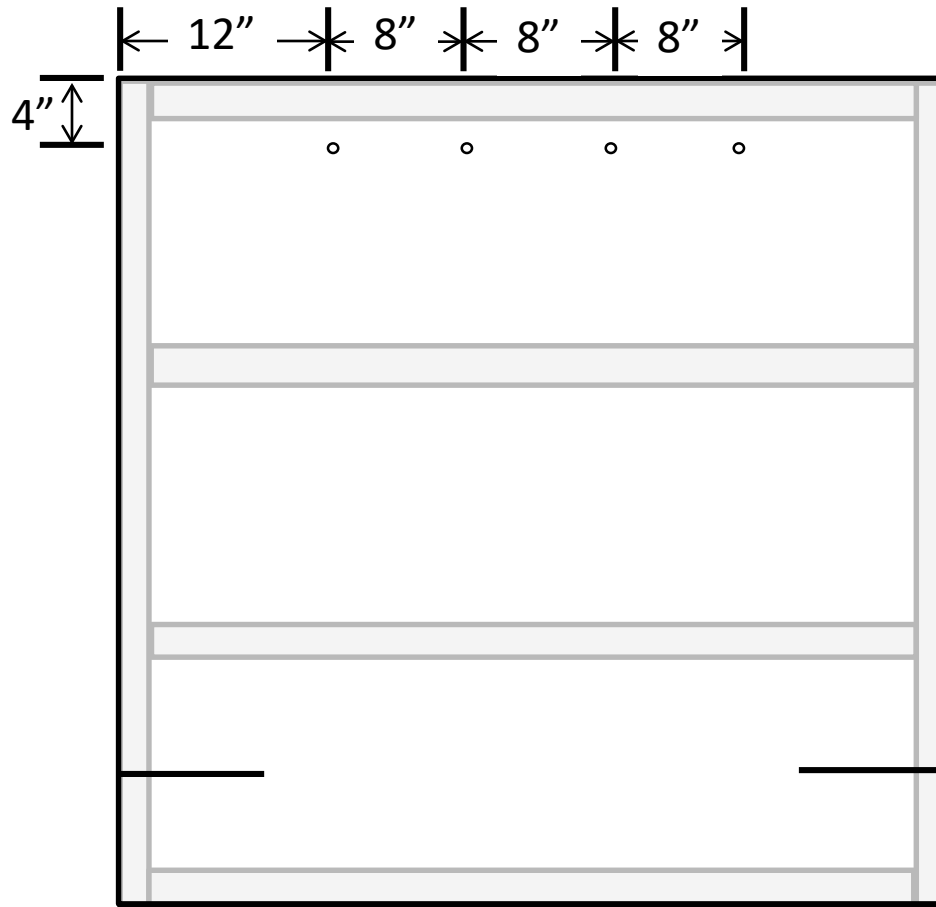
Sheet A

Professional Mission



Cut (4) Perimeter pieces of 1/2 Round plus (2) 8" long pieces of 1/2 Round. Glue and tape in place until dry.

Sort It!	Sheet B
Professional Mission	

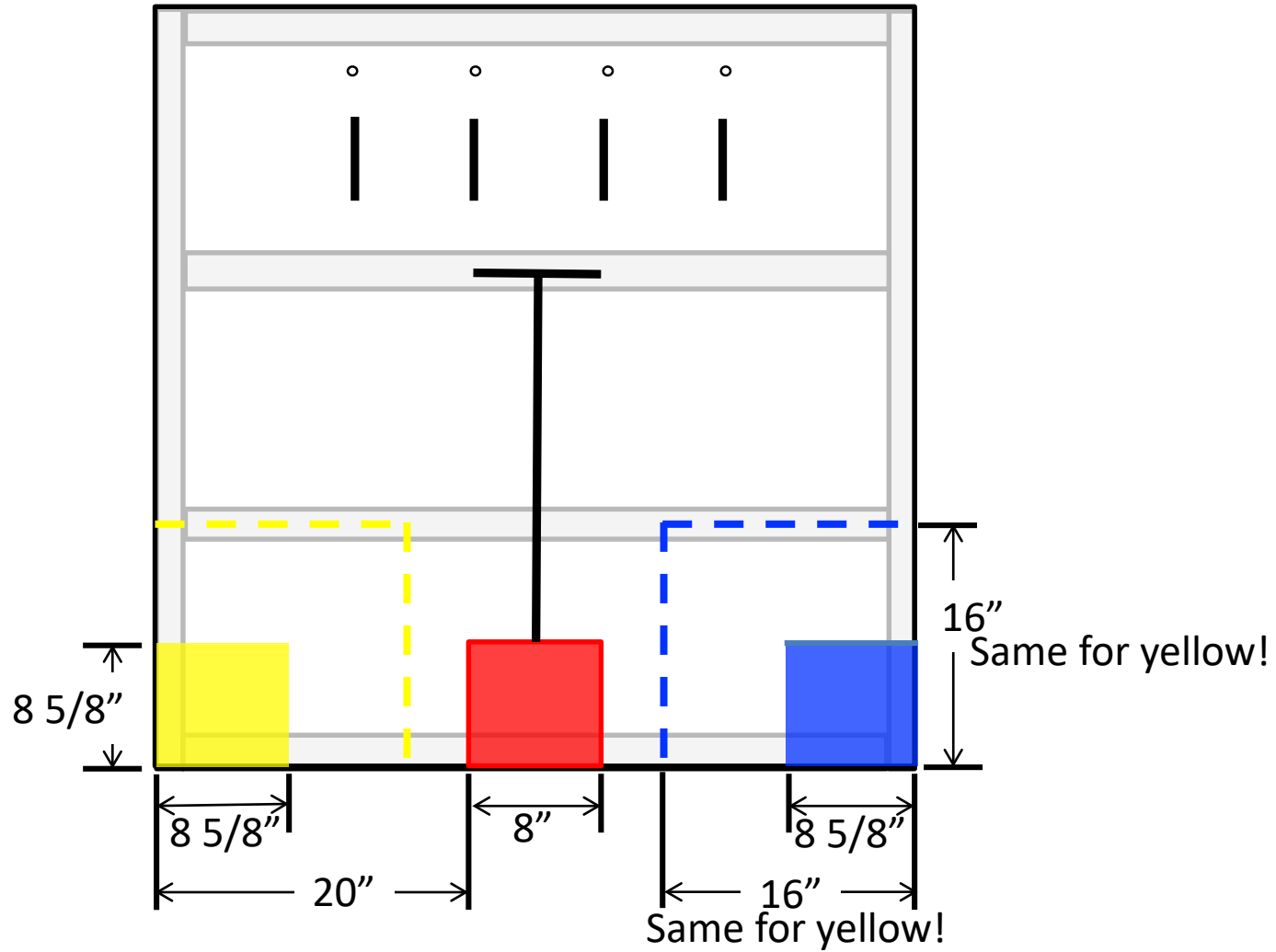


Drill (4)  $\frac{1}{2}$ " Diameter holes.

Sort It!

Sheet C

Professional Mission

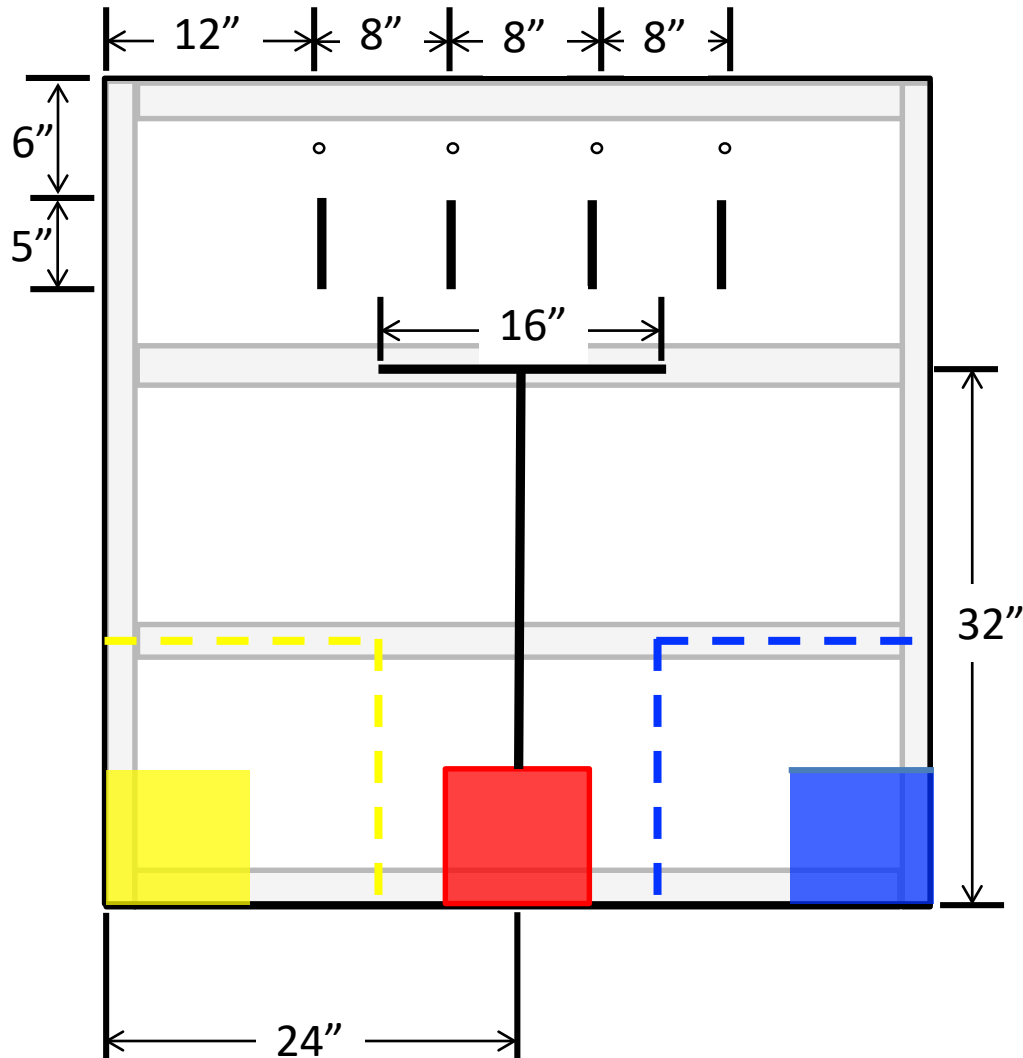


Paint Scheme Part 1 – Color  
Line width is  $\frac{3}{4}$ "

Sort It!

Sheet D

Professional Mission

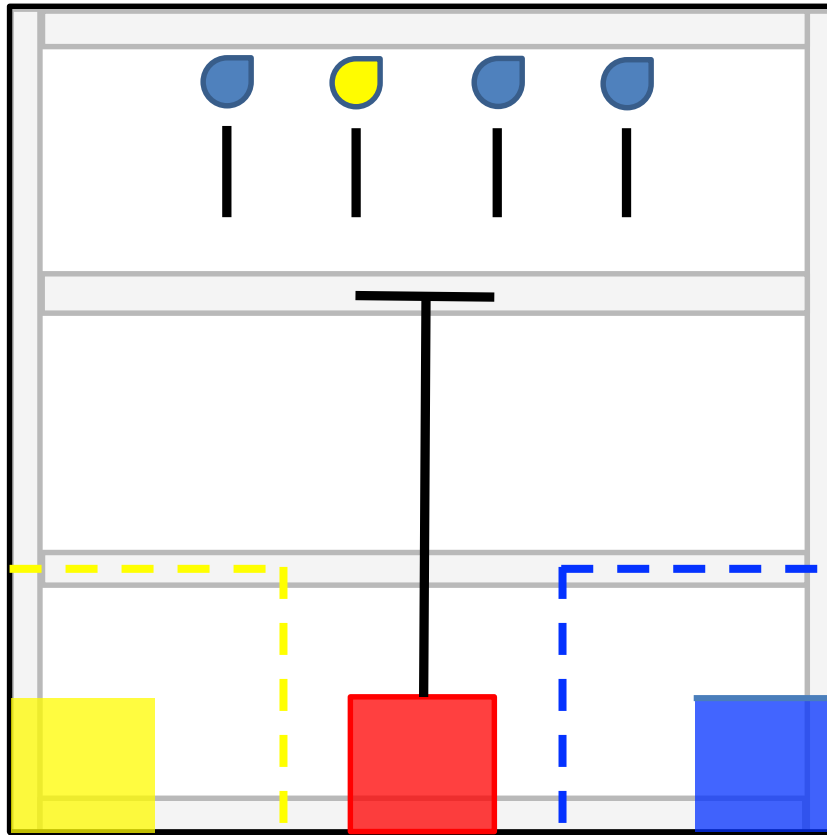


Paint Scheme Part 2 – Black  
 Line width is  $\frac{3}{4}$ "

Sort It!

Sheet E

Professional Mission



Course ready for running.

Sort It!

Sheet F

Professional Mission