

# Psychology Newsletter

## Inside this Issue

- Letter from the Chair 1
- Clinical Program 2
- Community Program 3
- Human Factors Program 6
- Recent Publications 10
- Recent Presentations 11
- Recent Grants 13

## Letter from the Chair

The past year was an exciting one for the university and the department. The basketball team made it to the final four. As a result, Charles Barkley now knows what a "Shocker" is. Our new President defined and oversaw the development of an ambitious, strategic plan to transform the university. The president's initiatives offer an important opportunity for the department to define its future role in the university and community and to begin to explore ways to continue improving our undergraduate and graduate programs.



Alex Chaparro  
Department Chair

We also recently opened our new institute called The "Applied Psychology Research Institute" or "APRI" for short. The institute provides additional meeting spaces and research laboratories to support funded research programs; research scientists, faculty, and graduate students working on grant applications. APRI was formally recognized by the Kansas Board of Regents this past June and will have its official opening sometime in the fall. One of the first scientists to move into APRI was Dr. Elizabeth Lazzara who holds a joint appointment with the department of psychology and the KU School of Medicine-Wichita. Also located at APRI are a full-time Research Analyst, grant writer, and staff supporting several industry funded research projects.

I expect that the next year will be as eventful although we will be spending a lot of it avoiding construction equipment and searching for that perfect parking spot.



Photograph courtesy of Justin Owens,  
HF alumni

# Clinical Program



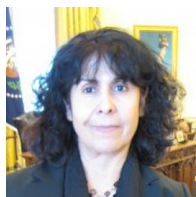
Deac Dorr, Coordinator of the Clinical Program

During the past 2012-2013 academic year, four of our senior students (Linda Boone, Britania Latronica, Allie Wagener, and Blake Webster) successfully completed their clinical internships and defended their dissertations. Linda has begun her career at Texas Tech Health Science Center: Correctional Mental Health Systems-Montford Unit; Britania is serving as a Staff Psychologist at Prairie View; Allie has Joined Premier Sport Psychology, LLC in Minneapolis-St.

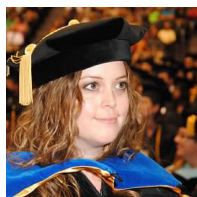
Paul; and Blake has joined College Skyline Clinic, a private practice in Joplin, MO.

Three of our students matched with APA internships. Callie Brockman and E.J. VonDran both matched at the Air Force Psychology Internship at Wright-Patterson USAF Medical Center in Ohio. Deidra Salamone matched at the State of Missouri Center for Behavioral Medicine- Forensic Tract in Kansas City.

## Recent Graduates



Linda Boone



Britania Latronica



Allie Wagener



Blake Webster

Rayna Herren has received a commission as an Ensign in the United States Navy which will help fund her graduate education. Upon receiving her Ph.D., she will serve as a Medical Officer in the Navy.

We are pleased to introduce our incoming class: Yvonne Lia Chaw (National University of Singapore), Katie Elish (Notre Dame), Jasmine Harris (B.A. University of North Carolina-Chapel Hill and MA University of North Carolina-Wilmington), and Eric Richardson (Utah State University). Please welcome our new students.

Dr. Snyder's child and family lab received a 2 year NIDA grant to

study family interaction in military personnel returning from Middle East conflicts. The project will assess the impact of exposure to trauma, PTSD, and transitions out of and back into the family.



The group also renewed a contract with Sedgwick County Developmental Disabilities to provide home-based family services. Dr. Snyder was appointed a permanent member of the Psychosocial Development, Risk and Prevention (PDRP) NIH review

panel.

The clinical program will stand for re-accreditation in 2015, and we have begun work on the Self Study for this visit.

## Congratulations

to **Dr. James Snyder** on receiving a 2 year grant from the National Institute on Drug Abuse (NIDA) to fund a new initiative for his lab.

# Community Program



Greg Meissen, Coordinator of the Community Program

The Community Psychology Doctoral program is considered one of the top community psychology programs in the country. This academic year was particularly outstanding with the awarding of four PhDs to Sharon Hakim, Ashlee Lien, Lisette Jacobson, and Felicia Lee. These exceptional graduates have great jobs in excellent universities and organizations teaching,

conducting research, and practicing community psychology. While awarding 16 PhDs in the last three years is an exceptional accomplishment for any graduate psychology program in the country, and especially at WSU, that achievement does not rival the quality and accomplishment of these fine graduates.

The prominence of the WSU Community Psychology Doctoral Program stood out at our national Community Psychology conference held in Miami in June (Division 27, American Psychological Association). There were more faculty, students, and alumni at the 14th Biennial Conference on Community Research and Action from WSU than any other Community Psychology program nationally or internationally. The research and the work of those WSU Community Psychology representatives highlighted the program in terms of presentations, symposiums, innovative sessions, and posters. One of the organizers of the Society for Community Research and Action (SCRA) Conference commented that: "Wichita State brought the very spirit of Community Psychology to our Conference". WSU Alumni played a major role in a number of ways. Dina Elias-Rodes was on the organizing committee of the Conference in her faculty role at the University of Miami, the host of the Conference; Mildred Edwards, who serves on the Kansas Board of Regents, attended the conference providing insights about the education of community psychologists;

*(Continued on page 4)*

## Recent Graduates



**Ashlee Lien** accepted a tenure-track position as an Assistant Professor of Psychology at

State University of New York (SUNY) Old Westbury on Long Island, NY. Old Westbury has an emphasis in Community Psychology and community-based research and action, and actively recruits first generation college students from inner-city neighborhoods within New York City.



**Lisette Jacobson and Felicia Lee** have both taken positions at the University of Kansas School of Medicine at Wichita where they will be conducting community-based health promotion research and developing preventive interventions in the Department of Preventive Medicine & Public Health and other units at KU. They will join a number of our alumni working at KU Medicine Wichita including Ruth Wetta, Elizabeth Ablah and Kari Schmidt.



**Sharon Hakim** has taken a position at Atlantic Health Systems, the largest health care system on

the east coast working with prominent Community Psychologist Bill Neigher, fellow WSU graduate Chris Kirk who took a similar position a year ago, and other community psychologists at Rutgers who actively partner with Atlantic Health.





(Continued from pg 3)

Alumni Oli Dziadkowiec, currently at the University of Colorado School of Medicine, presented research on the Prevention and Reduction of Tobacco; Emily Grant, with the University of Wyoming, presented a pilot study on the development of policy regarding human trafficking; and Crystal Reinhart, currently at the University of Illinois, provided results of a social norms initiative to reduce binge drinking. Chris Kirk working with Atlantic Health had a number of roles and presentations at the SCRA Conference including helping facilitate the Community Psychology Practice Summit, presenting research on empowering schools for marginalized students, improving health literacy, and organizing a roundtable on Practice Careers for Community Psychologists.



The SCRA is an international organization devoted to advancing theory, research, and social action. Its members are committed to promoting health and empowerment and to preventing problems in communities, groups, & individuals.

Two alumni that continue their research at WSU generated much interest. Karen Countryman-Roswurm, Assistant Professor of Social Work and Tara Gregory, Director of Research at the WSU Center for Community Support & Research organized an innovative and provocative Roundtable Session on "Unintended Empowerment: Using Qualitative Methods with Marginalized Youth. Karen and Dina Elias-Rodes

## Congratulations

to **Dr. Greg Meissen** for winning the John Kalafat Award in Applied Community Psychology at the 14th Biennial Conference on Community Research and Action (SCRA)

organized a symposium on Multi-Disciplinary Collaboratives for Communities Free of Human Trafficking, which also generated much interest particularly around the innovative policy work being done in Kansas.

WSU Faculty and current students also had a number of presentations and posters at the SCRA Conference including **Lou Medvene's** symposium on Exploring the Potential of Computers to Enrich Older Person's Social Network that included papers by Samuel Ofie-Doodoo, Rachel Smith and Kari Nilsen.

Heather Grohe and recent graduates Ashlee Lien and Rochelle Rowley organized a provocative session on "Social Justice in the Classroom: Teaching Controversial Topics", and Heather worked with WSU undergraduate student Kara Long and Greg Meissen on a symposium on undergraduate education in community psychology that highlighted the WSU Community Psychology Certificate Program.

**Rhonda Lewis** and her research group including Kyrah Brown, J'Vonnah Maryman, David Stowell, and Jamie LoCurto presented a number of posters, organized symposiums, and roundtables and made presentations on their ongoing and productive work on empowerment, marginalized youth, and prevention.

(Continued on page 5)



Alumni Louis Brown, who has gained national recognition for his work with self-help groups, chairs the SCRA Interest Group on Self-Help Groups (co-founded by Lou Medvene & Greg Meissen), recently authored new policy for the American Psychological Association recognizing the impact of self-help groups, has written two books and published a number of journal articles. Louis won the SCRA Early Career Award at the SCRA Conference based on his excellent work started at WSU and has continued on at Johns Hopkins, Penn State, and the University of Texas. Louis also won the SCRA Outstanding Video Award for his compelling documentary, "Making It Sane" which started as a film that was part of his dissertation.

**Greg Meissen** was awarded the John Kalafat Award in Applied Community Psychology presented to "an individual who exemplifies John Kalafat's unique characteristics as mentor, teacher, and advocate and especially his passion in making the benefits of community psychology accessible to all".

# Community Program

(Continued from pg 4)

***"..kicked off the conference with the kind of energy that buzzed for the next three days!"***

One of the highlights of the Conference was the special innovative sessions organized by WSU faculty, alumni, and students.

**Greg Meissen**, outgoing Co-Chair of the SCRA Community Psychology Practice Council worked with incoming Co-Chair, Sharon Hakim and other WSU graduate students Mike Lemke, Kyrah Brown, incoming student Jasmine Douglas, and other Community Psychologists across the country on a pre-conference Community Psychology Practice Summit attended by 75 community psychologists. Participants reviewed the

significant progress of the Council over the last 5 years and strategized for the next 5 years. Greg co-facilitated the Summit along with Kyrah Brown, Chris Kirk, Mike Lemke, and other Community Psychologists. Incoming President of SCRA, Fabricio Balcazar, commented that the Practice Summit "kicked off the conference with the kind of energy that buzzed for the next 3 days".

**Rhonda Lewis** organized a special pre-conference session of the Council of Community Psychology Education Programs and a special "Town Hall Meeting" that focused on the newly adopted Competencies for Community Psychology. This "Town Hall Meeting" was one of the highlights of the Conference and has already generated three work groups. One of these, focuses on creating a

Community Psychology Summer Institute for next June. Another, on a Community Psychology Practitioner Talent Pool available to graduate programs nationally and internationally. Lastly, a Community Psychology Graduate Program "Self-Examination" Initiative designed to encourage programs to collaboratively work with their students to build the 18 Competencies of Community Psychology into their curriculums. This last initiative is actually modeled after what the WSU Community Psychology Program has done over the last two years in addressing the Community Psychology Competencies.

.....

## WSU Community Psychology Retreat

The WSU Community Psychology Program has reviewed how well we are addressing the 18 Community Psychology Competencies through a special session facilitated by nationally recognized Community Psychologist Tom Wolff that reviewed expected and actual levels of coverage and expertise followed by a survey of WSU students and alumni regarding the Competencies conducted by **Charlie Burdsal** and his research group including Chris Voegeli, Hannah Krieg, Kate Witsman, and Laura Herpolsheimer. We had the "first ever WSU Community Psychology Program Retreat" last year to better understand how to

move toward greater adoption of the Competencies that resulted in reviews of available and quality electives at WSU and a system to track the best electives offered, the nature of Qualifying Exams, a review of Community Psychology Practicum, and ways to enhance our curriculum in light of the Competencies. This fall the work continues with the formation of a faculty-student work group on Curriculum & Practicum Enhancement to develop recommendations designed to provide the highest quality Community Psychology Educational in the country.



# Community Program Outlook

The Community Psychology Faculty and Students anticipate a productive and eventful Academic Year starting with a Colloquium by Meredith Minkler. **Lou Medvene** has developed an academic-community planning group that is bringing Dr. Minkler, arguably the most prominent Community-Based Participatory Research Scientist in the United States, to share her ground breaking work conducted

at the University of California, Berkeley. She will also interact with faculty, students, and community partners to acknowledge and promote her approach to research and action, which is the dominant method in Community Psychology nationally and at WSU.

“We are involved in a decade of great promise for community based research and intervention”, which former Kansas Governor

and current Secretary of Health and Human Services, Kathleen Sebelius, has called “a time for a greatly enhanced community and public health”. This is an important decade for community psychology nationally and at Wichita State University.

---

## Human Factors Program



*Dr. Barbara Chaparro, Coordinator of the Human Factors Program*

The HF Program is stronger than ever! Seven students graduated in 2012-2013. Our new faculty hires, Dr. Jibo He, Dr. Joe Keebler, and Dr. Liz Lazzarra hit the ground running this year. Our “old-timers”, Dr. Evan Palmer, Dr. Rui Ni, Dr. Alex Chaparro, Dr. Paul Ackerman, and Dr. Barbara Chaparro have continued to generate stellar work.

The Training Research and Applied Cognitive Engineering (TRACE) laboratory, under the supervision of **Dr. Joseph Keebler**, has been working on a multitude of projects across healthcare, military, and consumer domains. Current

projects include: a Blue-Cross Blue-Shield Kansas City Area Life Sciences award examining teamwork and communication among medical professionals; studies examining the efficacy and learning effects of a novel music-learning interface in collaboration with Optek Music, Inc.; collaborations with Sedgwick County’s Emergency Medical Service on the application of Human Factors in pre-hospital care; and visual memory and learning research in collaboration with the Army’s Night Vision directorate.



TRACE lab has published proceedings and journal articles in a multitude of outlets during 2012-2013, including the proceedings of the Human Factors and Ergonomics Society, the proceedings of the Human Computer Interaction International conference, the Journal of Ergonomics, and the Journal of Theoretical Issues

in Ergonomic Science. Further, TRACE has multiple papers under review, including empirical articles at the British Medical Journal: Quality and Safety, HFES, as well as a special issue of the Frontiers Journal: Music and the Embodied Mind.

**Dr. Jibo He** started the Human Automation Interaction Lab (HAIL), which focuses on studying performance of distracted and drowsy drivers and human computer interaction. An advanced HyperDrive driving simulator has been built in the lab. Current research projects include evaluating the effect of texting on driving performance and technologies to detect distracted and drowsy driving. Dr. He is working closely with State Farm Insurance Company and University of Illinois on driving behaviors. Dr. He was awarded a grant from State Farm Insurance Company and the Multidisciplinary Research Projects Award (MURPA) from Wichita State University.

**Dr. Paul Ackerman** continues  
*(Continued on page 7)*



(Continued from page 6)

to serve as the Assistant Chair of the department and has been updating the department electronic database of all faculty grant activity and student information (including current, alumni, and prospective students).

This provides the faculty, staff, and university administrators access to critical information for a variety of departmental functions.

**Dr. Evan Palmer** and the Laboratory of Applied Visual Attention (LAVA) published several papers and won several grants in the past year, including a grant from the Kansas City Area Life Sciences Institute to improve communication during patient handoffs. Graduate student Andrew Miranda was first author on a paper examining how game-like points and sound effects shape attention and intrinsic motivation.



Three graduate students landed internships this last year: Sarah Fouquet was hired by Children's Mercy Hospital in Kansas City, MO, Andrew Miranda landed a 9-month internship at Honeywell Corporation in St. Paul, MN, and Neethan Siva spent three months working for QVC in West Chester, PA. We welcomed Duy Nguyen to the lab who is studying perceptual learning in action video games as well as visual search of e-commerce websites. Members of the LAVA lab made 15 presentations to international

conferences in 2012 and 2013.

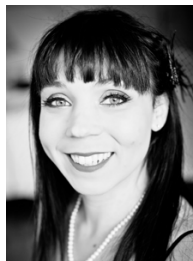
**Dr. Rui Ni** was awarded the 2013 Cassat Pilot Research Program grant for work on driving and aging. Dr. Rui Ni is continuing his collaboration work with researchers in China investigating the neural mechanisms underlying the detection of imminent collision objects in driving using a state-of-art 7-T fMRI scanner.



Visual Perception & Cognition Lab

(Continued on page 8)

## Dr. Elizabeth Lazzara



**Dr. Elizabeth Lazzara** came from the University of Central Florida where she obtained her doctorate

in Applied Experimental Human Factors Psychology and completed her dissertation investigating the impact of telemedicine on teamwork during rounds within the Trauma Intensive Care Unit in a large, non-profit, tertiary care teaching hospital. Since her arrival as a dual appointed Research Assistant Professor at the University of Kansas School of Medicine Wichita and Wichita State University, she has been advancing patient safety research pertaining to teamwork, training, and cultural issues. More specifically, she is partnering with Children's Mercy Hospital to develop a scientifically-sound, evidenced-based

**Fun Fact**

**Dr. Joseph Keebler** appears on a monthly broadcast called "The Human Factor" on Wichita's public radio. He presents on modern psychology and its impact on everyday life through psychological theories and applications. You can read commentary for his show or download the podcasts at: [KMUW.org](http://KMUW.org)

handoff protocol for inpatient hospitalists. In addition, she is also collaborating with Wesley Medical Center to better understand the current state of the culture, teamwork, and interdependent work processes within the Neonatal Intensive Care Unit.



Finally, she has publications in Joint Commission Journal on Quality and Patient Safety, Medical Science Educator, and Human Resource Management that are forth coming.

# Human Factors Labs

(Continued from page 7)

Two of his students gave presentations at international conferences (Vision Sciences Society) in 2013. Bobby Nguyen presented on the correlation between 2D shape perception and 3D motion perception. Joel Persinger presented on motion-indepth perception in stereopsis.

John Plummer and Brad Weber joined Rui's lab in Fall, 2012 and are currently working on motion perception and attention. Dr. Ni started to work with Derby Senior Center in Fall, 2012 on improving driving-related visual functions among older adults. Dr. Ni's VPC lab will continue to collaborate with independent living facilities both in Wichita and in Beijing to study driving behaviors and aging.

**Dr. Barbara Chaparro** and the Software Usability Research Lab landed industry contracts with Dell, Coca-Cola, Kansas Health Institute, The Golf Warehouse, Children's Mercy Hospital, and Benchmark Brands.

Veronica Hinkle, Sav Shrestha, Justin Owens, and Amanda Smith all graduated and are working on publishing their dissertations as they begin their promising careers.



Mikki Phan received an internship with Motorola Mobility this summer. Jennifer Teves is working with Sarah Fouquet at Children's Mercy Hospital on a usability assessment of CMH's EMR system. Jennifer, Mandy Phelps, and Kelsi Lenz are all working on dissertation research. Jo Jardina earned several awards for her 2nd-year research project on e-Readers and e-Textbooks. Christina Siu joined the lab and is collecting data on an eye tracking study of search result pages. We are excited to have Christal Haskins joining the lab in the Fall.

**Dr. Alex Chaparro** received a contract from General Atomics Aeronautical Systems Inc to continue development of a state-of-the-art universal control station for operating Unmanned Aircraft Systems. Drs. Bonnie Rogers and Traci Hart and graduate student Neethan Siva lead the day-to-day human factors design effort as part of the Aviation Human Factors Laboratory now located in the new Applied Psychology Research Institute. Dr. Chaparro also continues his research on driving working with graduate students Rondell Burge, Joseph Crandall, and David Libby. Samatha Jansen completed a summer internship at Western Michigan University working with a faculty member from their human factors program.



.....  

## Recent Graduates



**Amanda Smith**



**Lukas Hulsey**



**Justin Owens**



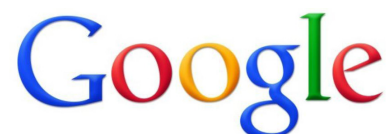
**Sav Shrestha**



**Veronica Hinkle**

## Congratulations

to **Dr. Rui Ni** who received the 2013 Cassat Pilot Research Program grant for his research.





# HFES Student Chapter Earns GOLD Status



The Human Factors Student Chapter earned GOLD status for the fifth consecutive year from the national HFES organization. They will be honored with the award at the HFES conference in San Diego in October.

The group is active throughout the year and welcomed its first inter-departmental member last Spring. There is an active effort to extend its membership to other WSU departments.

## Welcome to the new Graduate Students:

### Clinical:

- Yvonne Lia Chaw
- Katie Elish
- Jasmine Harris
- Eric Richardson

### Community:

- Dan Clifford
- Jasmine Douglas
- Jessica Drum
- Nichole Freund
- Amber Klaver
- Refika Kreinath

### Human Factors:

- Christal Haskins
- William Choi
- Jake Ellis
- Brad Patzer

## Donate to the Psychology Department

Now you can donate to the Psychology Department ONLINE!

Follow the instructions below to get started:

1. Go to <https://foundation.wichita.edu/give>
2. Enter your donation amount
3. Select "Fairmount College of Liberal Arts & Sciences"
4. Click "Add donation"
5. In the Memorial/Tribute Information field, specify the Psychology department or a specific program (Community, Clinical, Human Factors, or Undergraduate).

Your gift will benefit current and future students.  
Thank you!



.....  
**WICHITA STATE  
UNIVERSITY**



## Recent Publications 2012 - present

- Adkisson, R., Burdsal, C., Dorr, D. & Morgan, C. D. (2012). Factor structure of the MACI in psychiatric inpatients. *Journal of Personality and Individual Differences*, 53, 501-506.
- Adkisson, R., Dorr, D., & Burdsal, C. (2012). Factor structure of the millon adolescent clinical inventory scales in psychiatric inpatients. *Journal of Personality and Individual Differences*, 53(4), 501-506.
- Berg G.M., Crowe R., Nyberg S., Burdsal C. (2012) Patient satisfaction with physician assistants in a trauma population: Relationships between ratings of interpersonal care, technical care and global satisfaction. *Journal of American Academy of Physician Assistants*, 25(5), 42-51.
- Berg G.M., Ekengren F., Lee F., Acuna D., & Burdsal C. (2012) Patient satisfaction with surgeons in a trauma population: Testing a structural equation model using perceptions of interpersonal and technical care. *Journal of Trauma*, 72(5), 1316-1322.
- Berg G.M., Lippoldt D., Spaeth D., Sook C., & Burdsal C. (2012) Trauma patient perceptions of nursing care: Relationships between ratings of interpersonal care, technical care and global satisfaction. *Journal of Trauma Nursing*, 19(2), 104-110.
- Coleman, C. K. & Medvene, L. J. (online) A person-centered care intervention for geriatric certified nursing assistants. *The Gerontologist*, 53(4), 687-698
- Dziadkowiec, O., Meissen, G. J. & Wituk, S. (2012). Who stays, who goes: A twelve month follow-up study of new members of consumer run organizations. *International Journal of Self-Help and Self-Care*, 6, 225-242.
- Fincannon, T., Keebler, J.R., & Jentsch, F. (in press). Examining external validity issues in research with human operation of unmanned vehicles. *Theoretical Issues in Ergonomic Science*.
- Grant, E. A., Reinhart, C., Wituk, S. & Meissen, G. J. (2012). An examination of the integration of certified peer specialists into Community Mental Health Centers. *Community Mental Health Journal*, 48, 477-481.
- Kirk, C., Lewis, R. K., Nilsen, C., & Colvin, D. (2012). The gender gap in educational expectations among youth in the foster care system. *Children and Youth Services Review*, 34, 1683-1688.
- Kirk, C., Lewis, R. K., Scott, A., Wren, D., Nilsen, C. & Colvin, D. (2012). Exploring the educational aspirations-expectations gap in 8th grade students: Implications for educational interventions and school reform. *Educational Studies*, 38, 507-519.
- Lavictoire, L.A., Snyder, J., Stoolmiller, M., & Hollenstein, T. (2012). Affective dynamics in triadic peer interactions in childhood. *Nonlinear Dynamics, Psychology and Life Sciences*, 16, 293-312.
- Lewis, R.K., & Sly, J. (2011). Health behaviors of African American emerging adults. *Journal of Black Masculinity. Special Issue: African Americans and Public Health*. 2, 84-102
- Lien, A. D., Lemke, M., West, C., Schrepel, S., Hunter, J., Banta, A., Gregory, T., & Meissen, G. (2012). Understandings of mental health recovery: Drawings of mental health recovery, and the disability industrial complex [Video files]. *Global Journal of Community Psychology Practice*, 2(3).
- McEachern, A., & Snyder, J. (2012). Gender differences in predicting antisocial behavior: Developmental consequences of physical and relational aggression. *Journal of Abnormal Child Psychology*, 40, 501-512.
- Morris, N., Chaparro, A., Downs, D. & Wood, J. M. (2012). Effects of simulated cataracts on speech intelligibility. *Vision Research*, 66, 49-54.
- Ni, R. Nguyen, B., and Zhuo, Y. (2012). Age-related difference in steering control under reduced visibility conditions. *Displays, Institute of Biophysics, Chinese Academy of Sciences*, Beijing, China
- Ni, R., Bian, Z., Guindon, A., & Andersen, G. (2012). Aging and the detection of imminent collision events under simulated fog conditions. *Accident Analysis & Prevention*, 49 525-531.
- Snyder, J., Brockman, C., & Stoolmiller, M. (2012). A dynamic systems analysis of child emotion displays in relation to family context and child adjustment: A Cox hazard approach. *Nonlinear Dynamics, Psychology and Life Sciences*, 16, 313-331.
- Snyder, J., Schrepferman, L., Bullard, L., McEachern, A., & Patterson, G.H.R. (2012). Covert conduct problems, peer deviancy training, parenting processes, and sex differences in the development of antisocial behavior during childhood. *Development and Psychopathology*, 24, 1117-1138.
- Wachlarowicz, M., Snyder, J., Low, S., Forgatch, M., & DeGarmo, D. (2012). The moderating effects of parent antisocial characteristics on the effects of Parent Management Training-Oregon (PMTO). *Prevention Science*, 13, 229-240.
- Wood, J. M., Chaparro, A., Lacherez, P., & Hickson, L. (2012). Useful field of view predicts driving in the presence of distracters. *Optometry and Vision Science*, 89(4), 373-381.
- Wood, J. M., Tyrrell, R. A., Chaparro, A., Marszalek, R. P., Carberry, T. P., & Chu, B. S. (2012). Even moderate visual impairments degrade drivers' ability to see pedestrians at night. *Investigative Ophthalmology and Visual Science*, 53(6), 2586-2592.
- Zettle, R. D., Barner, S. L., Gird, S. R., Boone, L. T., Renollet, D. L., & Burdsal, C. A. (2012). A psychological biathlon: The relationship between level of experiential avoidance and perseverance on two challenging tasks. *The Psychological Record*, 62, 433-445.

## Recent Presentations 2012 - present

- Bohil, C., Higgins, N., & Keebler, J.R. (2012). Incidental category learning during rote memorization. *Psychonomics*. Minneapolis, MN
- Brown, C., May, R., Nyman, J., & Palmer, E. (2012). Effects of friend vs. foe discrimination training in action video games. Paper presented at the *Human Factors and Ergonomic Society Annual Meeting*. Boston, Massachusetts; October.
- Brown, K., Lewis, R. K., Kirk, C., Stowell, D., & Lee, F. (April, 2012). The role of sense of community in psychological well-being, educational aspirations and educational expectations among students of color attending a predominately white institution. Poster presented at the *58th Southwestern Psychological Association Convention*. Oklahoma, City, OK.
- Burdsal, C. A. et al. (2012) Future trajectories in psychology: Perspectives from SWPA's past presidents (Part 2). Presented at the *Annual Meeting of the Southwestern Psychological Association*, April, Oklahoma City, OK.
- Burdsal, C. (2012) From Color Wheels (1903) to IPADS (2010): The impact of technology on psychological research in SAMR. Symposium at the *Annual Meeting of the Southwestern Psychological Association*, April, Oklahoma City, OK.
- Burdsal, Charles, Hynan, Linda, & Jackson, D. (2012) SAMR: 40th anniversary celebration, Presented at the *Annual Meeting of the Southwestern Psychological Association*, April, Oklahoma City, OK.
- Gird, S., Zettle, R. D., Webster, B. K., & Hardage-Bundy, A. (2012). Developing a quantitative measure of self-as-context: Preliminary findings. In R. D. Zettle (Chair), Sizing up selfing: Efforts to assess self-as-context. Symposium presented at the *ACBS Annual World Conference X*, Washington, D.C.
- Goetz, A., Keebler, J.R., Phillips, E., Jentsch, F., & Hudson, I. (October, 2012). Evaluation of simulations for future HRI teams. *Proceedings of the 56th annual meeting of the Human Factors and Ergonomics Society*. Boston, MA.
- Gutierrez, R., Kloos, B., & Lewis, R. K. (June, 2012). Teaching Community Psychology in order to promote social change. Symposium at the *4th International Community Psychology Conference*. Barcelona, Spain.
- Hakim, S. and Meissen, G. J. (September, 2012) More for the children, less for the trash can: Using choice architecture to increase student consumption of fruits and vegetables. Poster at the *Governors Conference on Obesity*, Topeka, KS.
- Herpolsheimer, L. & Burdsal, C. A. (2012) Older adults attitudes of a senior center and perceived quality of life. Poster presented at the *Annual Meeting of the Southwestern Psychological Association*, April, Oklahoma City, OK.
- Heyne, K., Lazzara, E. L., Keebler, J.R., Benishek, L., & Salas, E. (2012). Best practices for the effective implementation of telerounding. *Proceedings of the 56th Annual Meeting of the Human Factors and Ergonomics Society*. Boston, MA: HFES.
- Jacobelli, J. B., Sandoz, E. K., Zettle, R. D., & Hardage-Bundy, A. (July, 2012). Perceived pressure for appearance and the conceptualized self: A study of avoidant eating pathology. In L. M. Martin (Chair), ACT for disordered eating: Recent findings. Symposium presented at the *ACBS Annual World Conference X*, Washington, D.C.
- Jardina, J. & Chaparro, B. (2012). Usability of e-readers for book navigation tasks. *Proceedings of the Human Factors and Ergonomics Society Annual Meeting* September 2012 vol. 56 no. 1897-1901.
- Jardina, J., Phan, M., Nguyen, D. & Chaparro, B. (2012). Gender differences in first impressions of web pages: The role of attractiveness, complexity, and brightness on perceived design quality. *Proceedings of the Human Factors and Ergonomics Society Annual Meeting* September 2012 vol. 56 no. 1604-1608.
- Persinger, J., and Ni, R. (August, 2012). Temporal characteristics of stereomotion direction perception. *Journal of Vision*, 12(9): 223; Presented to Annual meeting of the Vision Sciences Society.
- Keebler, J.R. (November, 2012). Combat Identification Training Research. *U.S. Army Night Vision and Electronic Sensors Directorate*. Ft. Belvoir, VA.
- Kirk, C., Lewis, R. K., & Nilsen, C. (July, 2012). The power of knowledge: Using evaluation results to identify successes in program implementation. Symposium at the *National Council for Community and Education Partnerships Conference*. Washington D.C.
- Kirk, C., Lewis, R.K., Brown, K., Karibo, B., & Park, E. (June, 2012). Power in schools: Explorations of an empowering educational setting. Poster presentation at the *4th International Community Psychology Conference*. Barcelona, Spain.
- Lee, F., Lewis, R.K., Stowell, D., Brown, K., & Scott, A. (June, 2011). Youth empowerment implementation project. In R.K. Lewis and B. Sanchez (Moderators). Developing positive development approaches to transform the health and well-being of adolescents and emerging adults. Symposium at the *13th Biennial Conference Society for Community Research and Action*. Chicago, IL.
- Lewis, R.K. Lee, F., Stowell, D., Brown, K., Lovelady, T. & Williams, G. (July, 2012). Reducing the effects of trauma by promoting resiliency in African American youth. Paper presentation at the *44th Annual International Convention of the Association of Black Psychologists*. Los Angeles, CA.



- Lewis, R.K., Lee, F., Stowell, D., Brown, K., Lovelady, T. & Williams, G. (June, 2012). Youth empowerment implementation project: A collaborative partnership for social activism and change among low-income youth. Poster presentation at the *4th International Community Psychology Conference*. Barcelona, Spain.
- Lewis, R.K., Lee, F., Stowell, D., Brown, K., Williams, G., and Lovelady, T. (April, 2012). Youth empowerment implementation project: Reducing trauma and promoting resiliency among youth. Poster presentation at the *58th Southwestern Psychological Association Convention*. Oklahoma City, OK.
- Nguyen, B., & Chaparro, B. (September, 2012). Apple iPad usage trends by students and non-students. *Proceedings of the Human Factors and Ergonomics Society Annual Meeting*, 56, 1511-1515.
- Nguyen, B., and Ni, R. (2012). Effects of contrast on spatial and temporal integration in 2D shape perception from dynamic occlusion. *Journal of Vision*, 12(9): 885; Presented to Annual meeting of the Vision Sciences Society
- Nilsen, K., Wachlarowicz, M., Coleman, C., Latronica, B., & Medvene, L.J. (2012). Reluctance to describe disliked others: Support for socioemotional selectivity theory. Poster presented at *Biennial meeting of the International Association of Relationship Researchers*, July, in Chicago, Illinois.
- Owens, J., Teves, J., Nguyen, B., Smith, A., Phelps, M.C., & Chaparro, B. (September, 2012). Examination of dual vs. single monitor use during common office tasks. *Proceedings of the Human Factors and Ergonomics Society Annual Meeting*, 56, 1506-1510.
- Partridge, R., Rendinelle-Salamone, D., D., Leiker, R., & Dorr, D. (March, 2012). Modal profiles of common personality disorders with the Specific Problem (SP) scales of the MMPI-2-RF. Poster presented at the *Annual Meeting of the Society for Personality Assessment*. Chicago, IL.
- Phan, M., Jardina, J. Hoyle, S., & Chaparro, B. (September, 2012). Examining the role of gender in video game usage, preference, and behavior. *Proceedings of the Human Factors and Ergonomics Society Annual Meeting*, 56, 1496-1500.
- Phillip, S., Scherz, J., Dilollo, A., Medvene, L.J., Parham, D., Lebrun, N. & Martin, K. (November, 2012). Communication partner variables that influence supported communication outcomes in Aphasia. Paper presented at the *Annual Meeting of the American Speech and Hearing Association*, Atlanta, Georgia.
- Runyan, A., & Medvene, L.J. (November, 2012) Nursing home residents' role in establishing and maintaining relationships with nurse aides. Presented as a poster at the *Annual Meeting of the Gerontological Society of America*, San Diego, California.
- Schuster, D., Keebler, J. R., Jentsch, F., & Zuniga, J. (October, 2012). Comparison of SA measurement techniques in a human-robot team task. *Proceedings of the 56th Annual Meeting of the Human Factors and Ergonomics Society*. Boston, MA.
- Siva, N., Chaparro, A., & Palmer, E. (October, 2012). Human Factors principles underlying glyph design: A review of the literature and an agenda for future research. Poster presented at the *56th annual meeting of the Human Factors and Ergonomics Society*. Boston, MA.
- Snyder, J. (May, 2012) Additive and synergistic effects of parents and peers on the early development of antisocial behavior in children. *Society for prevention Research*, Chicago, IL, (with Lisha Bullard)
- Snyder, J. (October, 2012) Changes in parental engagement, monitoring, and discipline in a randomized trial of behavioral parent training – timing, duration, sequencing and mutual entrainment. *National Conference in Clinical Child and Adolescent Psychology*, Lawrence, Kansas (with Sarah Staats, Ryan Sinclair and Nicole Schmidt)
- Snyder, J. (October, 2012) Utility and effectiveness of Family CheckUp – a community application. *National Conference in Clinical Child and Adolescent Psychology*, Lawrence, Kansas (with Samantha Eskridge, Bryna Bordovski, Ryan Sinclair and others).
- Voegeli, C. D. & Burdsal, C. A. (April, 2012) Possible selves and motivation in intimate relationships, poster presented at the *Annual Meeting of the Southwestern Psychological Association*, Oklahoma City, OK.
- Walsh, S., Partridge, R.W., Dorr, D., Morgan, C.D., & Runyan, A. (August, 2012). Mean differences of the validity scales of the MMPI-2 and the MMPI-2-RF. Poster presented at the *Annual Meeting of the American Psychological Association*, Orlando FL.
- Walsh, S., Webster, B., Latronica, B. & Dorr, D. (March, 2012). The relationship of the MMPI-2-RF to the Modifying Indices of the MCMI-III. Poster presented at the *Annual Meeting of the Society for Personality Assessment*, Chicago, IL.
- Webster, B., Walsh, S., Latronica, B., & Dorr, D. (March, 2012). The relationship of the Specific Problem Scales of the MMPI-2-RF to the Clinical Syndrome and Severe Clinical Syndrome Scales of the MCMI-III. Poster presented at the *Annual Meeting of the Society for Personality Assessment*. Chicago, IL.
- Whitman, L. E., Phelps, M., Reynolds, K. V., and Chaparro, B. (June, 2012). Assessing technological literacy of middle school students. *Proceedings of the American Society for Engineering Education Conference*, San Antonio, TX.
- Wiese, C. W., & Keebler, J. R. (August, 2012). Conquering complexity with virtual tools: A co-located team application. In M. L. Shuffler, T. Köhler, & C. W. Wiese (Co-Chairs), *Virtuality & cultural diversity in teams: Creating challenges or opportunities?* Symposium conducted at the *Meeting of the Academy of Management*, Boston, MA.

Zettle, R. D. (April, 2012). Acceptance and commitment therapy. Presented at the Kansas Association for Behavior Analysis Annual Conference, Overland Park, KS.

Zettle, R. D. (2012) Review of the Forgiven Life: A Pathway to Overcoming Resentment and Creating a Legacy of Love by Robert D. Enright, *PsycCRITIQUES Review*.

Zettle, R. D., & Gird, S. R. (2012). Selecting a self-help book on forgiveness as a choice: A review of The Forgiven Life: A Pathway to Overcoming Resentment and Creating a Legacy of Love. *PsycCRITIQUES*, 57(37).

## Recent Grants 2012 - present

| Principal Investigator           | Project Title   | Funding Agency/Organization                                     |
|----------------------------------|---|---|
| Chaparro, Alex                   | UCS Human Machine Interface (HMI) Style Guide Support                                     | General Atomics   |
| Chaparro, Alex                   | Human Factors Support of Block 5 IRADS  | General Atomics   |
| Chaparro, Barbara                | Usability Analysis of Software  | Dell  |
| Chaparro, Barbara                | Usability Analysis of Mobile Devices and Keyboards  | Motorola  |
| Chaparro, Barbara                | Usability Analysis of Voice Input on Mobile Devices                                       | Nuance  |
| Chaparro, Barbara                | Competative Usability Analysis of Websites  | The Golf Warehouse  |
| Chaparro, Barbara                | Usability Analysis of Mobile App  | Coca-Cola, Inc.   |
| Chaparro, Barbara                | Card Sort and Usability Study   | Benchmark Brands  |
| Keebler, Joe                     | Investigating the Efficacy of Augmented Reality Training for Combat Identification Tasks  | WSU Undergraduate Student Research Grant                        |
| Keebler, Joe                     | Effects of Embodiment on Musical Learning using an Augmented Reality Instructional System | Optek Music, Inc.   |
| Lewis, Rhonda                    | Continuation grant submitted Youth Empowerment Implementation Project                     | Office of Minority Health                                       |
| Medvene, Louis                   | The Social Support Networks of Elderly Customers of Home and Community-Based Services     | WSU's Regional Institute on Aging                               |
| Ni, Rui                          | Improve Older Adults' Contrast Sensitivity Through Training                               | University Research/Creative Project Award, WSU                 |
| Palmer, Evan & Chaparro, Barbara | Qualitative Analysis of Exercise Wristbands   | Motorola  |
| Palmer, Evan                     | Textbook website content and supplementary materials                                      | Sensation & Perception, 3rd Edition by Wolfe, et al.            |
| Palmer, Evan & Riss, Robert      | Determining Optimal Handoff Protocols for the Transition of Patient Care                  | Blue Cross Blue Shield Kansas City Area Life Sciences Institute |
| Snyder, James                    | Early Head Start Consultation and Training  | Child Start   |
| Snyder, James                    | Family Check Up Intervention services   | Sedgwick County SCDDO   |

Wichita State University  
Psychology Department  
1845 Fairmount,  
Wichita, KS 67260 - 0034

Phone: (316) 978 - 3170  
Fax: (316) 978 - 3086  
[www.wichita.edu/psychology](http://www.wichita.edu/psychology)

Alex Chaparro  
Department Chair  
email: [alex.chaparro@wichita.edu](mailto:alex.chaparro@wichita.edu)

Judy Barnes  
Psychology Office  
email: [judith.barnes@wichita.edu](mailto:judith.barnes@wichita.edu)

Marci Nelson  
Psychology Office  
email: [marsyl.nelson@wichita.edu](mailto:marsyl.nelson@wichita.edu)

## Congratulations

to Marci and Judy! Both have recently completed their degrees at WSU. Below, they are pictured holding a pair of embossed WSU bowling balls, congratulatory gifts from the department.



Thanks to Marci and Judy for continuing to play a key role in the success of the department!

Please contact them with any updates throughout the year.

Newsletter compiled by:  
Navaneethan Siva  
2nd Year, HF