



School of Social Work News

Volume 10, Issue 3

September 2012



WICHITA STATE
UNIVERSITY

School of Social Work
Fairmount College of Liberal Arts and Sciences
1845 Fairmount, Wichita, KS 67260-0154
(316) 978-7250



YOU ARE INVITED TO THE SCHOOL OF SOCIAL WORK HOLIDAY PARTY

FRIDAY, DECEMBER 7, 2012
4:00 - 6:00 PM

RAIN CAFÉ & LOUNGE
518 E DOUGLAS, WICHITA

WE WELCOME STUDENTS, ALUMNI, FIELD FACULTY,
AND OTHER INTERESTED PARTIES TO HELP US
CELEBRATE THE END OF THE FALL SEMESTER
AND THE COMING HOLIDAYS.

HOPE TO SEE YOU THERE!

LOCATION CHANGE DUE TO CONSTRUCTION!



Inside Stories

- [Director's Ponderings](#) 2
- [Field Notes](#) 3
- [SOSW](#) 4
- [Faculty Accolades](#) 4
- [School of Social Work Spring Electives](#) 5
- [Community Events](#) 6
- [Volunteer Opportunities](#) 8
- [Employment Offerings](#) 9
- [Mark Your Calendar](#) 11



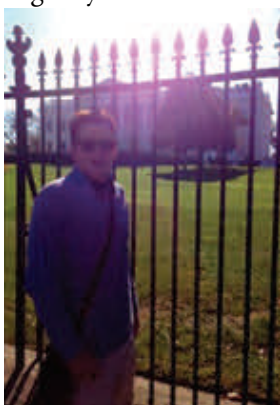
The Director's Corner....Reflecting Brien Bolin Director of the School of Social Work

brien.bolin@wichita.edu

Lows in the forties and highs in the sixties, it could not have been a better time or week to be in our Nation's Capital. I arrived in Washington DC the morning after the historic election where pollsters and pundits



alike were providing their spin. The predictions were accurate, it was a very close election. Sampling techniques of our population provided insights into everything from approvals of handling the economy to who is the most trustworthy. However, the role of diversity (gender, race, religion, etc.) in the vote was the big topic of Wednesday morning's chatter. The dignity and worth of each person's ability to vote in this election without challenge or intimidation was important for justice for those who face oppression. The search for political insights spilled out in the media, both digitally and on-the-air and in casual conversations. These conversations should not end with the end of the 2012 presidential election. Conversations



about issues of service, justice, dignity, relationships, competency, and integrity should be part of our collective consciousness as a Nation.

My two hours in the Chicago airport were spent engaged in "behavioral observation" (people watching). Campaigners traveling back to their hometowns shook hands, hugged, and discussed their late night of watching results roll in, some with excitement others with disappointment. However, the service provided to the campaigns in their respective social change efforts was invaluable in getting out the vote for both the Democrats and Republicans. I observed groups of people gathered around television monitors, commenting on the vote; while others read the morning papers noticeably engaged in the headlines with colored graphs and charts of the U.S. and their state by state outcomes. The passion expressed in both parties' campaigns and the interest in the country's well-being, direction, and leadership is inspirational. This election was clearly part of our collective consciousness, and should be part of a continued passion of discourse as the country moves 'Forward.'

Attending the Annual Program Meetings of the Council on Social Work Education and the Deans and Directors meetings in DC was a "Capital Venture." Social work educators, administrators and practitioners shared knowledge, teaching, research, practice and administrative experiences to develop our growing social work competencies. We were also able to spend time with colleagues

and friends to recognize the central importance of our relationships. Coming together whether in class or in social media is important for growth. These professional meetings were also a time to support our colleagues and friends in New York and New Jersey and their losses in wake of "Hurricane Sandy." We came together and developed special sessions during the meetings, discussed resources, strategies and initiatives to support schools of social work, faculty, staff and students in this time of recovery. Ideas were initiated and the profession of social work clearly reflected the integrity of values and deeds.

Reflecting on the fall and the historical election I hope that as a profession of social work educators, student and practitioners, we can share in the positive collective consciousness of growth and keep moving forward.

Peace and Happy Holidays,
Dr. Bolin



Field Notes

Sabrina Perez Glatt & Shaunna Millar
Director & Associate Director of Field Practicum

All the field liaison instructors are making site visits. I can tell you from doing mine, our students are doing a great job in serving people in communities and our field instructors are giving their students the opportunities to be successful in the agencies! It is so much fun to see the knowledge and growth of our students and know they will return to your agencies after break, hit the ground running, and looking like social workers more than students!

Just a reminder to all, end of the semester Practicum Performance Evaluations are due the week of December 5th. Students, make sure you get on the calendar for your field instructors now, if you haven't already, to get these in timely.

Shaunna Millar and I have begun the placement process for the 2013-2014 Academic Year. BSW Practicum Orientations were held this week



with BSW Applications Due 12/14/12. We will post on our website and facebook page a complete schedule of BSW & MSW dates to remember as we proceed with our placement process. This will be helpful to students and field instructors considering placements for next year.

Shaunna Millar just completed the mini-training on doing performance evaluations. I will do a mini training on January 31, 2013 on how supervision is different as a field instructor. Hope to see you at the Metroplex in January.

Many of you may or may not know, I have decided to take early retirement as of July 5, 2013. This has been a thoughtful decision reached with sadness and joy at what will be before this social worker. I hope I can see as many as you as possible so I can personally thank you for your tremendous support.

I have been so lucky to have a position in social work in which I could grow professionally as I watched our students grow professionally.

sabrina.perezglatt@wichita.edu
shaunna.millar@wichita.edu

What a blessing to see future social workers in the classroom and then work with them professionally as they instruct the next generation of social workers. I have been humbled by the dedication you have for the profession. If you haven't been a field instructor or would like to be one, I encourage you to give it a try. As a field instructor myself for several years before I came to WSU, I never regretted the experience. Thank you so much for what you have given to the practicum program and what you have given to the WSU School of Social Work.

I leave you with this Thanksgiving riddle:

Knock, knock.

Who's There?

Waddle.

Waddle Who?

Waddle could I have done without you?

Sabrina



SOSW

Sherry Chapman, BSW Faculty Advisor

SOSW is giving thanks for all the students who have given so much energy and effort to keep our name prominent on the campus this semester. The organization has been extremely busy and involved both on campus and in the community during this time. We started off the semester with a bang at the Convocation, gathering a large, enthusiastic crowd of social work students and taking third place in the convocation banner contest. Then we "floated back to school" with a root-beer float event and also showed up to flaunt our social worker pride at the Welcomefest event...all within the month of August. September brought us face-painting fun at the Shocker family fun fair where our organization was the only one other than Student Gov-

ernment Association to be represented! In October we were active with a service project at the Farm Incorporated Visitor Exchange Center, painting four visit rooms over one weekend. The next weekend we were representing SOSW at our spooky best with a decorated trunk and mask-coloring activity at Trunk n Treat. Thanks to everyone who made all of these events a success.

There have been a number of changes in officer positions over the past semester and a recent resignation by BSW president Coy Cox resulted in the subsequent appointment of Tom Lezniak to fill that position. Now is the time for all SOSW members to step up and assist MSW president Nicole Bosch and BSW president Tom Lezniak with ideas and participation for second

sheryl.chapman@wichita.edu

2012-2013 BSW SOSW Officers

President: [Tom Lezniak](#)

Vice President: [Melissa Lemlek](#)

Faculty Adviser: [Sherry Chapman](#)

2012-2013 MSW SOSW Officers

President: [Nicole Bosch](#)

Secretary: [Johnna Ferb](#)

Faculty Adviser: [Sabrina Perez Glatt](#)

semester projects. Some interesting ideas have been proposed, don't you want to hear what they are and get in on the ground floor for some exciting SOSW fun next semester?

Faculty Accolades

Dr. Fred H. Besthorn was a panel speaker at the 13th annual *Transforming Social Work Practice, Education & Inquiry* conference in Burlington, Vermont in October 2012. The conference was sponsored by the Global Partnership for Transformative Social Work.

Dr. Besthorn also had the following publication:

Lee, K.H., **Besthorn, F.H.**, Bolin, B.L., & Jun, J.S. (2012). Stress, spiritual and support coping, and psychological well-being among older adults in assisted living. *Journal of Religion & Spirituality in Social Work: Social Thought*, (31)4, 328-347.

Dr. Brien Bolin had the following publication:

Lee, K.H., Besthorn, F.H., **Bolin, B.L.**, & Jun, J.S. (2012). Stress, spiritual and support coping, and psychological well-being among older adults in assisted living. *Journal of Religion & Spirituality in Social Work: Social Thought*, (31)4, 328-347.

Dr. Kyoung Lee had the following publication:

Lee, K.H., Besthorn, F.H., Bolin, B.L., & Jun, J.S. (2012). Stress, spiritual and support coping, and psychological well-being among older adults in assisted living. *Journal of Religion & Spirituality in Social Work: Social Thought*, (31)4, 328-347.

He also had the following presentations:

Lee, K.H., Yoon, D.P., Moon, S.S., Cho, H.K., & Choi, S. (11/2012). *Stressors, coping resources and physical/mental health problems among Korean immigrants*. Oral presentation at the 2012 Annual Program Meeting (APM) of the Council on Social Work Education (CSWE), Washington, D.C.

Yoon, D.P., & **Lee, K.H.** (11/2012). *Relationships between negative spiritual beliefs and health outcomes among diverse populations*. Oral presentation at the 2012 Annual Program Meeting (APM) of the Council on Social Work Education (CSWE), Washington, D.C.

WSU School of Social Work Spring Electives

ScWk 611A - Psychopharmacology

Prepares students for social work practice in the field of substance abuse and to intervene effectively when working in other areas where addiction may be a concern. It includes psychological, physiological, and sociological effects of mood altering substance and behaviors and their implications for the addiction process. An emphasis on pharmacological effects of tolerance, dependency/withdrawal, cross addiction, and drug addiction will be covered in this course. Understanding common patterns and causes of drug use among subcultures of diverse populations will be included. This course is included in the curriculum to fulfill requirements for the Licensed Addiction Counselor (LAC) with the Behavioral Sciences Regulatory Board (BSRB). The program requires an addiction treatment focused practicum. Interested students should be advised by the social work adviser assigned to this program.

Ms. Deah Miller, LMSW, LCAC
CRN# 26369, 3 credit hours
Thursdays, 5:00 - 7:25 pm
Hubbard Hall, Room 223

ScWk 610P - International Social Work

This course provides an overview of micro and macro practice outside of one's own culture and internationally that will facilitate skill development in cross-cultural assessment and intervention at the individual, group and community level.

Dr. Kyoung Lee
CRN# 26396, 3 credit hours
Tuesdays, 4:30 - 6:55 pm
Clinton Hall, Room 213

ScWk 611B - Rural Social Work

This course explores the application of the advanced generalist practice model to rural settings in a range of fields such as health, mental health and poverty. The course is organized around a paradigm that links social problems, social policies, social programs and practice intervention approaches.

Dr. Orren Dale
CRN# 26370, 3 credit hours
Tuesdays, 7:00 - 9:45 pm
Geology Building, Room 207

ScWk 611C - Domestic Human Trafficking

This course has an emphasis on Domestic Minor Sex Trafficking. Topics covered within this course will include: Forms of Human Trafficking; Those Involved; Risk and Resiliency Factors; Prevention; and Direct-Services through the Assessment, Intervention and Termination Process.

Dr. Karen Countryman-Roswurm
CRN# 26784, 1 credit hour
2 Saturdays (March 16 & 30)
10:00 am - 6:00 pm
Jabara Hall, Room 127



**WICHITA STATE
UNIVERSITY**

**FAIRMOUNT COLLEGE OF
LIBERAL ARTS AND SCIENCES**

School of Social Work

Interested in taking one or more of our elective courses, but already have your degree?

You don't need to be one of our students to take our elective courses. People often take our courses for professional or personal development or licensing requirements. If you aren't currently a WSU student, you will need to be admitted to WSU as a non-degree seeking student either at the undergraduate or graduate level. Courses numbered between 500 and 799 can be taken for either undergraduate or graduate credit. In order to take courses numbered 800 or above, you must be admitted to the Graduate School. Be aware that if you take a course for undergraduate credit, you will not be able to apply that as graduate credit or toward a graduate degree in the future.

The application process is simple.

Applying as an undergraduate non-degree bound student:

Submit the simple 2-page application form with the application fee to WSU Admissions. You can download the form or apply online on the WSU Admissions website at www.wichita.edu/admissions. Enter the major code for non-degree bound "K10B" on the application form. You do not need to submit transcripts to be admitted as an "open admission" non-degree bound student. Once you accumulate 15 credits under that status, you will need to have transcripts sent to WSU to become a regular nondegree bound student.

Applying as a graduate non-degree bound student:

Submit the simple 1-page Graduate School application and the graduation fee to the WSU Graduate School. You can download the form or apply online on the Graduate School website at www.wichita.edu/gradschool.

Have official transcripts sent directly from your universities to the Graduate School. (If the last school you attended was WSU, they will already have your transcripts and you do not need to request them.)

Graduate School offers two levels of non-degree admission:

Non-Degree Status A (major code G46S) allows you to take any graduate level courses numbered 500 and above. The requirements are a bachelors degree from an accredited university and a minimum 2.75 GPA over the last 60 credit hours of coursework.

Non-Degree Status B (major code G66S) allows you to take graduate level classes numbered 500-799. The only requirement is to have a bachelors degree from an accredited university. There is no GPA requirement.

Community Events

10th Annual **POWER** Conference

Pride Of Wichita– and surrounding area– Empowerment Rally

Friday, March 1, 2013

Celebrating Social Work and the POWER of Survival

Keynote Presenter: Dr. Mary Lee Esty,

Brain Wellness and Biofeedback Center of Washington, Bethesda, MD

Early Bird Registration Rate: \$80.00

Registration fee includes:

*Contact hours for social workers will be available

*Networking Opportunities

*Full Breakfast Buffet

*Lunch Buffet

Student discount is available!

**Early bird registration cut off is Feb. 15th; \$100 registration after this date*



Located at Century II Performing Arts & Convention Center

225 W. Douglas, Wichita, KS

Watch our website for more information to come:

<http://www.wichita.edu/conferences/power>

Mini Field Training

“Employee vs. Student Supervision: Strengths and Differences”

Thursday, January 31, 2013

12:00 noon - 1:00 pm

Hughes Metropolitan Complex (29th & Oliver)

Bring your own lunch!

RSVP to trisha.wenrich@wichita.edu

Community Events



Brown Bag Learning: You Bring Your Lunch; We Serve the CEU's

Mental Health and the PostPartum Woman
 Mental health issues facing pregnant and postpartum women are gaining increasing awareness in the professional world. Early intervention and treatment have been shown to greatly improve the well being of both mother and child. This presentation aims to educate professionals in the areas of postpartum mental health so more women may be identified and effectively treated.

Learning Objectives:

- Participants will gain an awareness of the top mental health concerns and risks facing pregnant and postpartum women
- Participants will gain an understanding of the clinical presentation and prevalence of each postpartum condition
- Participants will understand diagnostic criteria as well as proposed changes to the DSM-V.
- Participants will learn the best treatment practices, resources, and strategies on how to engage women in treatment.

**Wednesday, January 9, 2013
 12:00 - 1:30 pm**

**University Methodist Church
 2220 N Yale Ave**

(Park in Yale @21st lot across from the church, enter south end door on west side of building)

Offering 1.8 CEU's from the WSU School of Social Work

Future Brown Bag Opportunities

Feb 13	Home Environments for Seniors
Mar 13	Veterans Issues
Apr 10	Adult Protection in Rural Communities
May 8	Trauma Focused Care



Mark Your Calendar!

KSSWA will be offering a workshop in Wamego, KS on February 18, 2013 on Human Trafficking in the morning, and the board meeting will take place in the afternoon. More information to come.



JOIN THE HOODHOP MOVEMENT

HoodHop Inc. is a 501(c)(3) non-profit organization that brings free dance and art lessons to underserved youth. It was founded on the east coast in the Maryland/DC area in 2004, and quickly grew from 17 to 400 youth and teens on the East Coast.

They use the positive outlet of dance and art as an avenue to reach youth in low-income neighborhoods, schools, and juvenile correctional facilities. This organization seeks to empower the next generation to find pride in artistic expression, rise up and become positive role models in their own communities.

The movement aims to mentor and invest in the academic success of its' participants as well by providing academic incentives such as college tours, guest speakers, and goal setting.

Check them out on facebook:
<http://www.facebook.com/pages/HOODHOP-inc/111631178862223>.

In partnership with Urban League of Kansas.



I am writing to share exciting news about the opening of The Addictions Treatment Center at Prairie View!

The Addictions Treatment Center at Prairie View creates an environment where you know that tomorrow will bring support, hope and recovery. We offer private and semi private rooms in a 14 bed inpatient/residential facility. We treat addictions and co-occurring disorders, therefore, we are able to offer a more thorough, comprehensive spectrum of care than those facilities that treat only substance abuse.

Services are delivered in our 24-hour licensed facility where signs and symptoms of withdrawal, medical complications and mental health disorders can be monitored and treated. The highly trained clinical and medical staff provide the interventions and therapy services to address the complicated presentations that could lead to relapse.

We know that addictions are both progressive and chronic, impacting family, friends and workplace relationships in addition to the individual. Our team collaborates with family members and other interested parties, and provide education and information to all affected by the addiction.

Please [view our brochure](#) or consult our website www.addictionsatprairieview.org for more information.



Volunteer Opportunities



Mentoring4Success is a statewide initiative that delivers mentoring services to help offenders safely and successfully return to communities. This community-based effort is led by experienced service organizations that guide mentoring organizations and mentors and work closely with the Kansas Department of Corrections to match eligible offenders to mentors as part of reentry.

Mentors make a difference!

"The Helen Initiative"

Twenty years ago, Helen served 15 years in prison for writing bad checks. She battled mental illness and lost her family ties and support while in prison. After being released and with no place to go, Helen stood outside the fence at the women's prison in Topeka, asking to be let in - time and time again. There was no one to send her to for help. Helen slept on the streets of Topeka and, in time, she found her way to Wichita. Several years later, Helen died - homeless and alone.

If Helen had been able to have a support person - someone to help her find resources, get connected to mental health care, give her advice and kindness - things may have been different.

In Kansas, it's a fact:

- 4,700 people release from prison each year.
- At least half need help with housing, employment, family and other issues.
- Kansas has reduced parolees' returns to prison by half. Mentoring can reduce this even more.
- Currently, Kansas Mentoring4Success has 500 active mentoring matches.
- There are 12 Lead Organizations throughout Kansas with Mentor Coordinators working diligently in recruiting, training and providing 24-hour support.

[Mentoring4Success Brochure](#)



Top Volunteer Opportunities

Homework Club meets on Mondays from 5:30 - 6:45 pm. Opportunities exist for 1:1 academic tutoring. Grade levels of students range from kindergarten to high school. **Mentors with strong skills in algebra, geometry and general mathematics are wanted.**

Envision sponsors a residential **Computer and Career Transition Camp** for middle and high school students. Camp will be held July 6-12, 2013. Skilled computer mentors are needed July 8-12, from 1-5 pm. Additional assistance may be needed on Sunday, July 7.

Please visit www.envisionus.com/volunteer/ to sign up.



Volunteers are a vital part of the hospice benefit. SouthernCare is seeking volunteers to help in providing support to our caregivers, patients and our staff...this can be through anything from baking or knitting to friendly visits or phone calls. We would also love to have anyone interested in running activities for patient groups or that can provide music, art or pet therapy for hospice patients. We are always collecting baby dolls or teddy bears at our office, that are then distributed to terminally ill patients and nursing home residents. For students, groups or adults that require volunteer hours, this is an excellent opportunity. Please contact us for more information at (316) 303-1500.



Strong Families Make a Strong Kansas

The Kansas Department for Children and Families (formerly SRS), Wichita office, needs volunteers to help with clerical tasks such as filing, and opening and delivering mail and other materials within the building. The ideal volunteer could give 2-3 hours per week during regular agency hours (8:00 am - 5:00 pm). Training is provided. The volunteer would need to pass the security clearance. For more information, contact Debbie Willsie at (316) 337-6644 or debbie.willsie@dcf.ks.gov.



WASAC

WASAC (Wichita Area Sexual Assault Center) is looking to double the number of volunteers they currently have.

The next training will be January 14-18, 2013 from 8:30 a.m. to 5:00 p.m. It will be a 40 hour training. Anyone interested in applying can contact Anne Sixkiller at Anne@wichitasac.com or (316) 263-0185 to request an application and schedule an interview. Interested parties can also go online www.wichitasac.com and print off an application and mail or email it to Anne at Anne@wichitasac.com.



The Wichita Public Schools McKinney-Vento Homeless program is currently serving over 1300 children and youth.

We are currently looking for volunteers to help us prepare items for the winter give away.

Our program is also in need of hygiene products, powdered laundry detergent, hats, mittens and blankets.

For more information contact Cynthia Martinez at (316) 973-4670 or email her at cmartinez@usd259.net.



Employment Offerings



Field Practicum Director

The School of Social Work Wichita State University, invites applications for a full-time 12-month unclassified professional Field Practicum Director to start July 1, 2013. The school offers an advanced generalist MSW program and a BSW program with over 300 students. The successful candidate will have opportunities to contribute to the ongoing success of an innovative and growing School of Social Work.

Responsibilities: Reporting to the School of Social Work Director, the Field Practicum Director shall administer, manage, coordinate, monitor and supervise all operations, practicum and curricular functions, documentation and activities of students, field instructors and liaisons consistent with the mission of the School of Social Work and pursuant to the field education accreditation requirements mandated by CSWE and regulatory requirements of the Kansas BSRB. A MSW from a CSWE accredited program, 6 years of social work practice experience with least 2 years being post-MSW, LMSW or LCSW from Kansas or eligibility for Kansas licensure if current license is from another state. Practicum education experience as a field instructor, liaison or other consultative or advisory capacities in the field.

[View full job description here.](#) Apply online at jobs.wichita.edu. Attach cover letter, vitae, and contact information for 3 references. Review of completed applications will begin after January 15, 2013.

WSU is an AA/EEO employer.

Employment is contingent upon completion of a satisfactory background check as required by Kansas Board of Regents policy. Women and minorities are encouraged to apply.

The Mental Health Association
of south central kansas



Peer Support Position

Part-Time position, 10-25 hours/week. Works with adults who have a mental health diagnosis by identifying triggers of symptoms, developing support networks, learning self-advocacy and sharing similar daily living experiences. Candidate must self-identify as a current or former consumer of mental health services. Apply at www.mhasck.org.



Individual and Group Community Support Workers

Looking for independent, motivated, flexible people to work in a fast-paced environment with youth to help meet mental health goals. Must be committed and dedicated to positively impact children in our community. Part-time, up to 32 hours/week, \$8.35-10.75/hr. MUST have reliable transportation and be willing to transport clients. Two year's experience working with children and/or related education required.

www.pyxispath.com

Fax resume to (316) 262-4232 or email to employment@behaviorallink.com. EOE



Social Work Specialist

The position responsibilities are to investigate and determine the accuracy of reports of suspected child abuse and neglect. Intervention with these families is during times of crisis. Assessment of the family functioning and sound judgment is necessary to determine the safety of the child(ren). The goal is protection of the children either in their own home or through out-of-home placement if necessary.

Minimum requirements, according to the State of Kansas classification specifications is license to practice social work in the State of Kansas at the time of hire.

The Kansas Department for Children and Families (DCF) currently has four vacant positions in the Wichita Office and three vacant positions with the Winfield Service Center.

[Download the full position description here.](#)

For more information or to apply, contact Sherye Farmer:

Phone: 316-337-6770

Email: sherye.farmer@dcf.ks.gov

Online: jobs.ks.gov

Fax: (316-337-6742)

Mail:

Kansas Department for Children and Families

Attn: Sherye Farmer

P.O. Box 1620

Wichita, KS 67201-1620



Youth Programs

Facilitator needed for Family Thinking for a Change and Aggression Replacement Training programs. Classroom and online facilitation included. 23 hours/week, Monday or Thursday evenings in Wichita and Tuesday evenings in El Dorado required. Some flexibility in other office hours.

Bachelor's degree in social work, criminal justice or related field, some experience facilitating family groups required. Some experience with online learning preferred. Contact Carolyn or Kristi at 316-269-4160. Send resume to Carolyn.west@esswichita.org or Kristi.mcneal@esswichita.org.



Social Worker, LBSW, LPC, LMSW, LMFT. Develops permanency options for children through reintegration with originating families or other permanency alternatives. **Positions located in Hays, Great Bend, Dodge City.**

Therapist (Reintegration), LMSW, LMFT, LPC. Provide in home services and case management, coordinate team staff members, resolve issues and maintain family as a whole, utilizing a therapeutic model. Builds on the strengths of the families to resolve issues and maintain the family as a whole. Must have experience working with children and family services, ability to travel, work flexible schedule, effective communication skills. **Positions in Topeka, Colby and Great Bend.**

Saint Francis Community Services offers an excellent benefit package and competitive wages. Must pass background checks. Must be 21. Valid Kansas drivers license required. Submit resume to ellen.bishop@st-francis.org or visit our website: www.st-francis.org. EOE

Employment Offerings



You Can Make A Difference

TFI Family Services, Inc. has the following positions available:

Reintegration/Foster Care Supervisor in Salina

Reintegration/Foster Care Supervisor supervises staff assigned to the region. Promotes the well-being of children. Participates in staff meetings and trainings and coordinates with staff from other agencies. Master's degree including licensure through BSRB and two to four years experience in child and family services or related field required.

Case Manager in El Dorado

Case Manager manages a caseload of Reintegration/Foster Care/ Adoption placements and determines the services to be provided. Bachelor's degree in human services field from an accredited university required with at least two years experience in child and family services. BSRB licensure is required.

Apply online at www.tffamily.org

TFI is an Equal Opportunity Employer



Residential Direct Care & Life Skills Coach

High school degree/GED required, college degree preferred. One to four years related experience and/or training; or equivalent combination. Must be at least 21 years old.

Apply in person or online at www.wch.org. Wichita Children's Home, 810 N Holyoke, Wichita, KS 67208. EOE



CLINICAL SUPERVISOR (FCS Counseling - Wichita, KS). To qualify for this job you need to have a Master's degree in social work, counseling, marriage and family therapy or psychology. LCSW, LCMFT, LCP or LCPC. Strong clinical assessment and intervention skills with a variety of client populations. Prefer experience in program management and successful supervisory experience.

PERMANENCY SPECIALIST (Multiple - Wichita, KS). This position requires a bachelor's degree in social work or master's degree in BSRB licensable field and two years additional training or related experience. LBSW, LMSW, LMFT, LMLP, or LPC. Responsible for developing and striving for the permanency goal of each case plan through client and family contact, preparing plan information, assessments, developing positive relations, work closely with the court system.

OUTPATIENT CLINICIAN (FCS Counseling - Wichita, KS). This position requires masters degree (MSW, MFT, and Masters in Psychology or Mental Health Counseling). LCSW required. 6 hours of continuing education credit in Play Therapy Training for Clinicians who see clients under the age of 6. Practicum clinical experience required. Professional clinical experience preferred.

PERMANENCY SUPPORT WORKER (Multiple - Wichita, KS). This position requires a high school diploma or GED and at least 2 years experience with assessments and working in the social service field. Provides direct services with families to help children reach a permanent home.

If you are interested in these opportunities, visit www.youthville.org. A full job description can be reviewed and an online application completed.

eliminating racism
empowering women **ywca**

Full-Time Women's Advocate

Duties include advocacy and supportive services to women in a domestic violence shelter. Demonstrated experience in direct client services, crisis counseling, and working with families in crisis. Ability to lead support/education groups. Degree in women's studies, social work, psychology or related field required. Bi-lingual preferred. Strong communication/interpersonal skills and computer literacy required. Will have rotating on-call responsibilities and will work some evenings. Position will report to the Shelter Coordinator.

Part-Time Night Manager

This is a 3rd shift position. Must be able to work overnight from 10:00 pm to 8:00 am. Duties include answering crisis line, basic housekeeping, data entry, admit residents and provide supportive counseling/advocacy to survivors of domestic violence. Bilingual a plus. Strong communication /interpersonal skills required. Non-smoking environment. Ideal for students to gain experience.

Part-Time Outreach Team Member

Duties include advocacy for women & children who are survivors of domestic violence, short-term case management, developing outreach activities in the community and public presentations for education and training. The candidate selected must have strong written and verbal communication skills. Undergraduate degree required, with a degree in social work, criminal justice, women's studies or communications preferred. Position will report to the Outreach Coordinator.

To apply for any of these positions, apply in person or send resume and cover letter to YWCA Wichita, Administration Offices, 1111 N St Francis, Wichita, KS 67214 or email mainoffice@ywcaofwichita.org. EOE

Happy Holidays



WICHITA STATE UNIVERSITY

FAIRMOUNT COLLEGE OF LIBERAL ARTS & SCIENCES

School of Social Work

1845 Fairmount
Wichita, KS 67260-0154

Phone:
(316) 978-7250

Fax:
(316) 978-3328

E-Mail:
socialwork@wichita.edu

Web site:
www.wichita.edu/socialwork



Find the School of Social Work on



WSU School of Social Work page:
www.facebook.com/wsusw

WSU School of Social Work Alumni page:
www.facebook.com/swalumni

Mark Your Calendar!

Upcoming Dates:

November 21-25	Thanksgiving Break (No Classes - Office Closed 22-25)
December 6	Last Day of Classes
December 7	Study Day
	School of Social Work Holiday Party (see 1st page for more information)
December 9	Fall Commencement
January 9 - 12:00 noon	Brown Bag Learning - Postpartum Issues - University United Methodist Church
January 21	Martin Luther King Day (University Closed)
January 22	Spring Semester Begins
January 31	Mini Field Training - "Employee vs. Student Supervision: Strengths and Differences"
February 1	MSW Program Application deadline
	Scholarship Application deadline
February 13 - 12:00 noon	Brown Bag Learning - Home Environments for Seniors - University United Methodist Church
March 1	POWER Conference
	BSW Program application deadline
March 13 - 12:00 noon	Brown Bag Learning - Veterans Issues - University United Methodist Church
March 18-24	Spring Break (no classes)
April 10 - 12:00 noon	Brown Bag Learning - Adult Protection in Rural Communities - University United Methodist Church
May 6	School of Social Work Colloquium
May 8 - 12:00 noon	Brown Bag Learning - Trauma Focused Care - University United Methodist Church
May 17	Spring Commencement