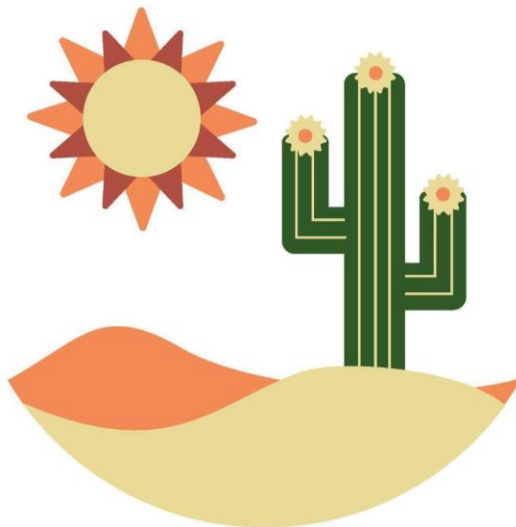


54th Annual Meeting of the Linguistic Association of the Southwest



Borderless Language

October 9-11, 2025
Wichita State University, Wichita, Kansas
Woolsey Hall
2062 N Mid-Campus Drive, Wichita, Kansas 67208

Full Conference Program

Please note: All times are Central Time (CT)

Thursday, October 9

Conference Registration, 11:30am - 5:00pm CT
Woolsey Hall Atrium WO101

LASSO Executive Meeting, 11:30am - 1:00pm CT
Woolsey Hall WO302
(boxed lunches provided for Executive Committee)

Break, 1:00pm - 1:15pm CT
Woolsey Hall Atrium WO101

Conference Opening Remarks, 1:15pm - 1:30pm CT
Auditorium 1, Woolsey Hall WO110A
Michelle Ramos-Pellicia, LASSO Executive Director
Rachel Showstack, Local Arrangement Committee Chair
WSU Welcome Remarks

	Opening Panel Session Auditorium 1, Woolsey Hall WO110A Chair: Sara Mata
Thursday 1:30pm - 3:00pm	Engaging Communities and the Schoolscape: Challenges and Opportunities to Latine Student Success Organized by Sheryl Bernardo-Hinesley Rocío del Águila¹, Michelle Ramos Pellicia², Sheryl Bernardo-Hinesley³ <i>Wichita State University¹, California State University San Marcos², Western Washington University³</i>

Coffee Break, 3:00pm - 3:15pm CT
Woolsey Hall Atrium WO101

Concurrent Sessions

Session 1: 3:15pm - 4:45pm CT

	Session 1A Auditorium 1, Woolsey Hall WO110A	Session 1B Auditorium 2, Woolsey Hall WO110B	Session 1C Woolsey Hall WO134
	<i>Bilingualism</i> Cancelled	<i>Language Shift and Language Maintenance</i> Chair: Mary Kohn	<i>Discourse Analysis</i> Chair: Michelle Ramos Pellicia
Thursday 3:15pm - 3:45pm		"Ya no se necesita la Maya": The sociolinguistic consequences of tourism Maricela Flores Lopez <i>University at Buffalo</i>	Critical Discourse Analysis of Facebook User Comments on 2020 Women's March in Pakistan Shewar Khan <i>The University of New Mexico</i>
Thursday 3:45pm - 4:15pm		Multilingual empire: The impact of labor migration on linguistic contact and variation in Kansas Drew Colcher <i>Wichita State University</i>	Contrasting Ideological Conceptualizations of the Worker in Discourse around a Labor Strike: A Critical Discourse Analysis Nicholás Chávez, Shewar Khan <i>The University of New Mexico</i>
Thursday 4:15pm - 4:45pm		Spanish in the city, the country, and the Country: Language maintenance and immigration in urban v. rural communities Devin Jenkins <i>The University of Utah</i>	Language of Politics: Examining Narrative Building during the Election Nabaa Al-Amood <i>Wichita State University</i>

Coffee Break, 4:45pm - 5:00pm CT
Woolsey Hall Atrium WO101

Keynote Address, 5:00pm - 6:30pm CT
Auditorium 1, Woolsey Hall WO110A
Sociolinguistic experience:
Explaining language contact without grammatical convergence
Rena Torres Cacoullos, Pennsylvania State University

Dinner on your own

Friday, October 10

Conference Registration, 8:00am - 5:00pm CT
Woolsey Hall Atrium WO101

Concurrent Sessions

Session 2: 8:30am - 10:00am CT

	Session 2A Auditorium 1, Woolsey Hall WO110A	Session 2B Auditorium 2, Woolsey Hall WO110B	Session 2C Woolsey Hall WO322	Session 2D Woolsey Hall WO135
	<i>Community Engagement</i> Chair: Rachel Showstack	<i>Spanish as Heritage Language</i> Chair: R. Mata	<i>Discourse Analysis</i> Chair: Patricia MacGregor- Mendoza	<i>Language and Social Justice</i> Chair: Christian Puma Ninacuri
Friday 8:30am - 9:00am	Make America Bilingual Again: Defendiendo el Multilingüismo en los Estados Unidos Brisa del Bosque <i>The University of New Mexico</i>	“¡Así se dice!”: Spanish Textbooks’ Hold on Heritage Speakers Mariana Mata <i>The University of Texas at San Antonio</i>	The Effects of Leading Questions on Opinion of News Media Braeden Miller <i>Wichita State University</i>	¡Ay, nombre!: “Spanish names” and identity ma(r)king Adam Schwartz¹, Eva Michelle Wheeler², Magdalena Galindo¹ <i>Oregon State University¹, Providence College²</i>
Friday 9:00am - 9:30am	Labeling and Signs of Language Vitality in US Latino Owned Companies, Latino Studies Programs, Hospitals and Churches Antonio Medina-Rivera <i>Cleveland State University</i>	Enfoques de variación lingüística: ¿Cuál es la presencia de Critical Language Awareness en el material pedagógico actual para hablantes de herencia de español en el sur de California? Elisa Fabian Linares <i>California State University San Marcos</i>	Branding the Antihero: Albuquerque’s Use of Breaking Bad in Tourism Marketing Tamara Martin <i>Northeastern Illinois University</i>	El aprovechamiento de la integración de la pedagogía crítica en el aula de ELH Yanina Hernandez <i>University of Houston</i>
Friday 9:30am - 10:00am	The Experiences of Hispanic- Serving Organizations Who Host Spanish College Students as Interns and Volunteers Edma Delgado-Solorzano <i>Wichita State University</i>		Metaphorical construction of New Mexican Hispanic identity as portrayed in New Mexican local political cartoons and other visual media Fátima Holguín, Nicolás Chávez <i>The University of New Mexico</i>	Tejiendo el paisaje lingüístico de disidencia en El verano boricua de 2019 Erin Trybulec <i>University of Illinois Urbana- Champaign</i>

Coffee Break, 10:00am - 10:15am CT
Woolsey Hall Atrium WO101

Concurrent Sessions

Session 3: 10:15am - 11:45am CT

	Session 3A Auditorium 1, Woolsey Hall WO110A	Session 3B Auditorium 2, Woolsey Hall WO110B	Session 3C Woolsey Hall WO322	Session 3D Woolsey Hall WO135
	Panel	<i>Open Educational Resources</i> Chair: Adam Schwartz	<i>Language and Identity</i> Chair: Devin Jenkins	<i>Phonology</i> Chair: Mark Waltermire
Friday 10:15am - 10:45am	Engaging students with engaged research: Sharing the story of Kaánze íe Rematriation Organized by Mary Kohn Mary Kohn¹, Joseph Pondillo¹, Mercedes Beatriz Quetzeri Amandi¹, Chester Hubbard² <i>Kansas State University¹, Kansas Forest Services²</i>	Online Educational Resources: Decolonizando la Enseñanza de SHL Elizabeth Zavala, Brisa del Bosque <i>The University of New Mexico</i>	Imagined Transnational Identities among Mexican Immigrant Families and Heritage Speakers of Spanish in the U.S. R. Mata <i>Western Washington University</i>	Effects of prosodic imitation on /ptk/ production in the speech of L2 learners Sara Sirgo Aroca, María Teresa Megía Céspedes, Andrea Ortega Trujillo <i>University of Massachusetts Amherst</i>
Friday 10:45am - 11:15am		Local voices, student choices: Student-led inquiry into Spanish-English bilingualism in the Kansas workforce Andie Faber <i>Kansas State University</i>	Ideologías intergeneracionales sobre el habla y la identidad en dos familias centroamericanas José Esteban Hernández, Norma Zarate <i>The University of Texas Rio Grande Valley</i>	Cross Linguistic Effects During Voice Training for Transfeminine Bilingual Speakers of English and Spanish: A Case Study Erin Krantz <i>The University of New Mexico</i>
Friday 11:15am - 11:45am		Redesigning Language Assessment with IPAs in a Community College Spanish Program Kelsey Harper <i>Butler Community College</i>	Voces en tránsito: Testimonios lingüísticos de supervivencia y resistencia en la frontera México-EE.UU. José Esteban Hernández, Perla Luengo, María Aguilar- Gonzalez <i>The University of Texas Rio Grande Valley</i>	Polar question prosody in Dzə: A first look Peace Benson, Philip T. Duncan <i>The University of Kansas</i>

Lunch on your own, 11:45am - 1:15pm CT

Concurrent Sessions

Session 4: 1:15pm - 2:45pm CT

	Session 4A Auditorium 1, Woolsey Hall WO110A	Session 4B Auditorium 2, Woolsey Hall WO110B	Session 4C Woolsey Hall WO322	Session 4D Woolsey Hall WO135
	Panel	<i>Spanish as a Heritage Language</i> Chair: Daniela Narvaez Burbano	<i>Language and Identity</i> Chair: Devin Jenkins	<i>Semantics and Pragmatics</i> Chair: María Irene Moyna
Friday 1:15pm - 1:45pm	Linguistic Scholarship for Social Change: Community-Engaged Scholarship in Linguistics Organized by Rachel Showstack	¡OYE Maestros, Learn to Teach Spanish Heritage! Dana Gravseth <i>Western Washington University</i>	Identity Labels in New Mexico: The Relationships Between Location and Language Use Mía del Rosario, Erin Krantz <i>The University of New Mexico</i>	Rethinking Number in the Navajo Verb Seth N. Wyatt <i>The University of New Mexico</i>
Friday 1:45pm - 2:15pm	Opening Remarks: Rachel Showstack ¹ , Scott Wituk ¹ Glenn Martínez², Mercedes Niño- Murcia³, Rommy Vargas⁵, Denise Romero⁶, Margarita Francisco⁴, Savannah Paschal⁴, Gabriela Aguilar⁴ <i>Wichita State University¹, The University of Texas at San Antonio², The University of Iowa³, Alce su Voz⁴, Spanish Ad Hoc Translations⁵, Salud + Bienestar⁶</i>	Rethinking Feedback: Exploring Language Ideologies in the Correction Practices of Spanish for Heritage Language Instructors Diego del Pozo, Francisco Martinez Ibarra <i>Towson University</i>	'In Portugal, we have more difficulty declaring ourselves Black!': A Raciolinguistic Examination of Language, Race, and Intersubjectiv(ies) in Lisbon Eva Michelle Wheeler <i>Providence College</i>	'Así' in Andean Peruvian Spanish: New Nuances Arising from Spanish–Quechua Contact María Sánchez Paraíso <i>Johns Hopkins University</i>
Friday 2:15pm - 2:45pm		Expanding the Critical Lens: Considerations on Indigeneity for Spanish Teacher Development Valeria Ochoa <i>Oregon State University</i>	Comercio ambulante de comida: negociación identitaria de la migración ecuatoriana en Nueva York Christian Puma Ninacuri¹, Patricia Gubitosi² <i>Bowdoin College¹, University of Massachusetts Amherst²</i>	"Y así ko es": ko as a pragmatic marker in Paraguayan Spanish and Guarani Martin Buck <i>The University of New Mexico</i>

Coffee Break, 2:45pm - 3:00pm CT
Woolsey Hall Atrium WO101

Concurrent Sessions

Session 5: 3:00pm - 4:30pm CT

	Session 5A Auditorium 1, Woolsey Hall WO110A	Session 5B Auditorium 2, Woolsey Hall WO110B	Session 5C Woolsey Hall WO322	Session 5D Woolsey Hall WO135
	Panel	<i>Spanish as a Heritage Language and Community- Based Learning</i> Chair: Valeria Ochoa	<i>Linguistic Landscape</i> Chair: Francisco Martínez Ibarra	<i>Language Variation</i> Chair: Israel Sanz-Sánchez
Friday 3:00pm - 3:30pm	Linguistic Scholarship for Social Change: Linguistic Scholarship for Policy Impact Organized by Rachel Showstack Opening Remarks: Logan DeMond ⁴ Drew Colcher¹, Rachel Showstack¹, Damián Vergara Wilson², Patricia MacGregor- Mendoza³ <i>Wichita State University¹, The University of New Mexico², Mexico State University³, ACLU of Kansas⁴</i>	Breaking Personal, Local, and Global Barriers: Familiar and Unfamiliar Spanishes in the SHL Classroom Martin Buck <i>The University of New Mexico</i>	Exploring the Linguistic Landscape: A Case Study of Cayetano Heredia National Hospital Susana de los Heros <i>The University of Rhode Island</i>	Subject Personal Pronouns in the Spanish of Ecuador: Analysis of the use of pronominal subjects in Quito and Esmeraldas Luis Alexander Campana Zapata <i>University of Massachusetts Amherst</i>
Friday 3:30pm - 4:00pm		Service learning, language acquisition and cultural experiences in a naturalistic, immersive context with young children Carlos Enrique Ibarra <i>The University of New Mexico</i>	Landscapes, frames, & power: Spanish-language signage in Pascagoula, MS. Tom Lewis <i>Tougaloo College</i>	The voseo/tuteo variation of prepositional pronominal pronouns in Uruguayan Spanish María Irene Moyna <i>Texas A&M University</i>
Friday 4:00pm - 4:30pm		Cuentos de Sábado as a Model for Community-Based Learning and Language Socialization for Latine students Daniela Narvaez Burbano¹, Claudia Matachana Lopez² <i>Amherst College¹, Bentley University²</i>	Keeping it local: The evolving Spanish linguistic landscape of a rural Virginia town Jennifer Lang-Rigal <i>James Madison University</i>	Social Meaning of Kinyarwanda Morphosyntactic Variation Adam An¹, Jean Paul Ngoboka² <i>University of Kansas¹, University of Rwanda²</i>

Coffee Break, 4:30pm - 5:00pm CT
Woolsey Hall Atrium WO101

Presidential Address, 5:00pm - 6:30pm CT
Auditorium 1, Woolsey Hall WO110A
Discrimination of Bilingual Dialects of Spanish in the Americas
Mark Waltermire, *New Mexico State University*

Banquet Dinner, Woolsey Hall Fidelity Bank Ballroom WO141

Saturday, October 11

Conference Registration, 9:00am - 11:00am CT
Woolsey Hall Atrium WO101

Concurrent Sessions

Session 6: 9:00am - 10:30am CT

	Session 6A Auditorium 1, Woolsey Hall WO110A	Session 6B Auditorium 2, Woolsey Hall WO110B	Session 6C Woolsey Hall WO134	Session 6D Woolsey Hall WO135
	<i>Language Contact</i> Chair: Rachel Showstack	<i>Linguistic Landscape</i> Chair: Patricia Gubitosi	<i>Language and Care</i> Chair: Daniela Narvaez Burbano	Workshop
Saturday 9:00am - 9:30am	Similar, yet different: Indigenous loanwords in early colonial Mexico-Tenochtitlan and Lima Israel Sanz-Sánchez <i>West Chester University</i>	Constructing an AANAPISI identity at an HSI: A case study Richard W. Hallett <i>Northeastern Illinois University</i>	Mothers' and grandmothers' beliefs about infant-directed speech and song in Chuquisaca, Bolivia Carlos Flores Quispe <i>University of Massachusetts Amherst</i>	The International Journal of the Linguistic Association of the Southwest (IJLASSO): A Platform for Advancing Linguistic Research Antonio Medina-Rivera <i>Cleveland State University</i>
Saturday 9:30am - 10:00am	Language contact and convergence: An overview of the influence of Basque on the Spanish spoken in the Basque Country and the tradition of the academic dictionaries and grammars in the linguistic contact Gonzalo Maestro Paredes <i>Masaryk University</i>	Language and Space: Examining Physical and Virtual Schoolscapes of a Hispanic- Serving Institution in WA State Sheryl Bernardo-Hinesley¹, Alba Arias Álvarez² <i>Western Washington University¹, University of Sussex²</i>	Language as Care: Reframing Mental Health Communication in Rural Kansas Noor Rizvi¹, Gitanjaly Chhabra² <i>Kansas State University¹, University Canada West, Vancouver²</i>	
Saturday 10:00am - 10:30am	Borderless Language-Mixing: How Does a Bilingual Radio Program Communicate in Social Media? Jorge de la Hoz Leal <i>University of Arizona</i>	English Only at the Digital Border: How HSIs' Online Language Choices Undermine Hispanic Representation Sarah LC Beard <i>Northeastern Illinois University</i>	Decentring Language and Reimagining Care with Moral Imagination: A Posthumanist Applied Linguistics Perspective Gitanjaly Chhabra¹, Noor Rizvi² <i>University Canada West, Vancouver¹, Kansas State University²</i>	

Coffee Break, 10:30am - 10:45am
Woolsey Hall Atrium WO101

Concurrent Sessions

Session 7: 10:45 am - 12:15pm CT

	Session 7A Auditorium 1, Woolsey Hall WO110A	Session 7B Auditorium 2, Woolsey Hall WO110B	Session 7C Woolsey Hall WO134	Session 7D Woolsey Hall WO135
	Workshop	<i>Language Attitudes</i> Chair: R. Mata	<i>Language in the Professions</i> Chair: Andie Faber	<i>Language and Social Justice</i> Chair: Claudia Matachana Lopez
Saturday 10:45am - 11:15am	Tenure and Promotion Patricia MacGregor-Mendoza¹, Michelle Ramos Pellicia², Patricia Gubitosi³ <i>New Mexico State University¹, California State University San Marcos², University of Massachusetts Amherst³</i>	Voices from the Coast: (Racio) Linguistic Attitudes in Montuvio and Afro-Ecuadorian Spanish Anahí Cevallos Vaca <i>University of Massachusetts Amherst</i>	Framing motion in wood flooring: How language typology shapes verbal metaphor Ryan Nicklas <i>Oklahoma State University</i>	Privilege, race, & language: A multi-modal analysis of how raciolinguistic ideologies & linguistic white privilege shape the linguistic context of Jackson, MS Tom Lewis <i>Tougaloo College</i>
Saturday 11:15am - 11:45am		Argentines in Houston: Language attitudes and usage in a Spanish-speaking micro- minority Caitlyn Cheng, María Irene Moyna <i>Texas A&M University</i>	A Linguistic Analysis of Air Traffic Communication Chris Sams <i>Stephen F. Austin State University</i>	Traces of Colonialism in English Language Teaching (ELT) Materials: A Raciolinguistic Justice Exploration of Decolonizing ELT Curricula María Camila Ramírez Quimbayo <i>Kansas State University</i>
Saturday 11:45am - 12:15pm		Ingroup or outgroup? The acceptance of “lenguaje inclusivo”, the gender-neutral pronoun “elle”, and the gender- neutral suffix “-e” in the United States Spanish-speaking community Maurissio Gonzalez, Meghann M. Peace <i>St. Mary’s University</i>	Variation-Aware Evaluation of Haitian Creole Medical Translations: A Step Toward Inclusive NLP for Healthcare Ludovic Mompelat, Rose Flaure Accilien <i>University of Miami</i>	Digital migration and its influence on language technologies and the teaching of English (Social media) Frida P. Valdés Orizaba <i>Northeastern Illinois University</i>

Conference Closing Remarks, 12:15pm - 12:30pm CT
Auditorium 1, Woolsey Hall WO110A
Michelle Ramos-Pellicia, LASSO Executive Director
Rachel Showstack, Local Arrangement Committee Chair

LASSO Business Meeting, 12:30pm - 2:00pm CT
Auditorium 1, Woolsey Hall WO110A