

WSU BANDS

Fall Ensemble Audition Packet

TROMBONE

DIRECTIONS: All players wishing to participate in a band at WSU are required to prepare the prescribed excerpts to the best of your ability for placement in an ensemble. If there are any questions regarding these excerpts please contact Dr. Timothy Shade – timothy.shade@wichita.edu

GENERAL GUIDELINES:

1. These auditions are for placement and seating, NOT for acceptance into an ensemble.
2. Please look at the excerpts carefully before starting to learn them for all relevant information such as key signatures, tempo indications, and style considerations.
3. If the excerpt is identified, GO LISTEN TO IT! Having a firm grasp of the relevance of each excerpt is important to performing it your best.
4. REMEMBER TO HAVE FUN!! Auditions are stressful yes, but you should still be making music. THAT is the fun part. Just relax and play.

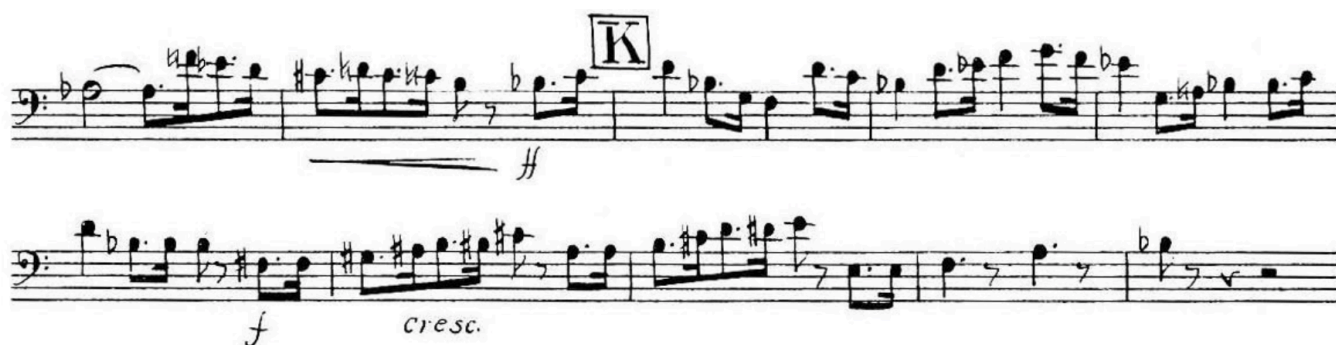
Academic Festival Overture, Opus 80 (Brahms/Safranek)



#1—Persichetti: Divertimento for Band, Op. 42, mvt. 4, “Burlesque” (Quarter=112)



Hindemith – March from Symphonic Metamorphosis – in 2/2 time - half = 86



IF YOU WISH TO BE CONSIDERED FOR WIND ENSEMBLE ALSO PLAY:

Bernstein, *Preludes, Fugues and Riffs*, Excerpt Range (m.278-292), Qtr. = 156

Start

A five-staff musical score in bass clef, 2/2 time. The first staff is marked 'Start' and begins at measure 278 with a fortissimo (f) dynamic. The second staff continues from measure 280 and includes a fortissimo (ff) dynamic. The third staff begins at measure 284. The fourth staff begins at measure 287 and includes a fortissimo (fff) dynamic. The fifth staff begins at measure 290 and ends with a 'Stop' instruction. The music is characterized by rapid sixteenth-note passages, often beamed in groups, with various accidentals and dynamic markings.

Stop

Ein Heldenleben, Opus 40 - 2nd trombone (R. Strauss)

(Festes Zeitmass)

61 *ff* *f* *cresc.*

62 *ff* *ff*

63

64 *sfz* *ff* *ff*

65 *ff* *p*