

WICHITA STATE UNIVERSITY

**SCHOOL OF PERFORMING ARTS** PRESENTS

Shakespeare's

**TWELFTH**

**NIGHT**



**SGA** STUDENT GOVERNMENT ASSOCIATION

1 free student  
ticket w/MyWSU ID  
Box Office: 316.978.3233  
[wichita.universitytickets.com](http://wichita.universitytickets.com)

**\$20, \$18, \$12**

Adapted & Directed  
by Joseph Urick

**WILNER AUDITORIUM**

**NOV 7-9, 2024 @ 7:30PM**

**NOV 10, 2024 @ 2PM**



WICHITA STATE  
UNIVERSITY

[wichita.edu/spa/currentseason](http://wichita.edu/spa/currentseason)



**SPA**  
SCHOOL of  
PERFORMING ARTS

THE SCHOOL OF PERFORMING ARTS

PRESENTS

WILLIAM SHAKESPEARE'S

# TWELFTH NIGHT

*ADAPTED BY JOSEPH URICK*

DIRECTOR/FIGHT  
CHOREOGRAPHER  
**Joseph Urick**

ASSISTANT  
DIRECTOR  
**Jessica Hudson**

STAGE  
MANAGER  
**Jesse Stephenson**

ASSISTANT  
STAGE MANAGER  
**Delaney Davis**

INTIMACY  
DIRECTOR  
**Erin Urick**

PRODUCTION COORDINATOR/  
LIGHTING DESIGNER  
**Ben Juhnke**

SCENIC  
DESIGNER  
**Alec Moore**

ASSISTANT  
SCENIC DESIGNER  
**Katie Bauman**

COSTUME/HAIR &  
MAKEUP DESIGNER  
**Emily Flowers**

ASSISTANT COSTUME/HAIR  
& MAKEUP DESIGNER  
**Emma Lewis**

SOUND DESIGNER/  
ENGINEER/COMPOSER  
**Trevor Andreasen**

ASSISTANT SOUND  
DESIGNER  
**Dani Little**

PROPERTIES  
SUPERVISOR  
**Molly Bazar**

ASSISTANT PROPERTIES  
SUPERVISOR  
**Makayla Lake**

TECHNICAL  
DIRECTOR  
**Ed Baker**

ARTISTIC DIRECTOR/  
PRODUCER  
**Cheyly Clawson**

# RUN OF SHOW

---

ACT 1 SCENE 1	DUKE ORSINO'S GROTTO
ACT 1 SCENE 2	THE SEA COAST
ACT 1 SCENE 3	OLIVIA'S HOUSE
ACT 1, SCENE 4	DUKE ORSINO'S GROTTO
ACT 1, SCENE 5	OLIVIA'S PALACE
ACT 2, SCENE 1	THE SEA COAST
ACT 2, SCENE 2	A STREET
ACT 2, SCENE 3	OLIVIA'S HOUSE
ACT 2, SCENE 4	DUKE ORSINO'S GROTTO
ACT 2, SCENE 5	OLIVIA'S GARDEN
10 MINUTE INTERMISSION	
ACT 3, SCENE 1	OLIVIA'S GARDEN
ACT 3, SCENE 2	OLIVIA'S HOUSE
ACT 3, SCENE 3	A STREET
ACT 3, SCENE 4	OLIVIA'S GARDEN
ACT 4, SCENE 1	BEFORE OLIVIA'S HOUSE
ACT 4, SCENE 2	OLIVIA'S HOUSE
ACT 4, SCENE 3	OLIVIA'S GARDEN
ACT 5, SCENE 1	BEFORE OLIVIA'S GARDEN



# CAST

---

VIOLA	LYNNAYA MCCLURE
SEBASTIAN	FIO WILLIS
DUKE ORSINO	OWEN BALMAN
OLIVIA	KELSI HARRIS
MALVOLIO	NOLAN WHITNEY
MARIA	SARA MOORE
SIR TOBY BELCH	CARSON EDIGER
SIR ANDREW AGUECHEEK	COLTON FARMER
FESTE	HAYLEY LONGACRE
ANTONIO	SKY DUNCAN
VALENTINE/A PRIEST	RILEY JOHNSEN
CURIO/A SEA CAPTAIN	LEOPOLD PORCARO
FEMININE UNDERSTUDY	AUBREY JOHNSON
MASCULINE UNDERSTUDY	ISRAEL CARRENO



# CREATIVE TEAM

---

DIRECTOR/FIGHT CHOREOGRAPHER	JOSEPH URICK
ASSISTANT DIRECTOR	JESSICA HUDSON
STAGE MANAGER	JESSE STEPHENSON
ASSISTANT STAGE MANAGER	DELANEY DAVIS
INTIMACY DIRECTOR	ERIN URICK
PRODUCTION COORDINATOR, LIGHTING DESIGNER, SCENE DESIGN MENTOR, PRODUCTION MENTOR	BEN JUHNKE
SCENIC DESIGNER	ALEC MOORE
ASSISTANT SCENIC DESIGNER	KATIE BAUMAN
COSTUME/HAIR & MAKEUP DESIGNER	EMILY FLOWERS
ASSISTANT COSTUME/HAIR & MAKEUP DESIGNER	EMMA LEWIS
SOUND DESIGNER/ENGINEER/COMPOSER	TREVOR ANDREASEN
ASSISTANT SOUND DESIGNER	DANI LITTLE
TECHNICAL DIRECTOR/STAGE MANAGEMENT MENTOR	ED BAKER
PROPERTIES SUPERVISOR	MOLLY BAZAR
ASSISTANT PROPERTIES SUPERVISOR	MAKAYLA LAKE
SCENE SHOP MANAGER	JASON FLANDERS
SCENE SHOP CREW LEAD	TREVOR ANDREASEN
SCENE SHOP CREW	JESSE STEPHENSON, ALEC MOORE, KATIE BAUMAN, FIO WILLIS, SKYLAR LANE, MOLLY BAZAR
COSTUME SHOP MANAGEMENT	MELISSA PENKAVA KOZA
LEAD COSTUME SHOP ASSISTANT	MIA DENNETT
COSTUME SHOP ASSISTANTS	EMMA LEWIS, EMILY FLOWERS, BLAKE GRIMSLEY, SEFERINO RAMIREZ
WARDROBE SUPERVISOR	MIA DENNETT
WARBDROBE/HAIR & MAKEUP RUN CREW	KATELEEN HO, LILI JIMENEZ, ISSY LYNN, QUENTIN PICKERING
COSTUME MAINTENANCE CREW	AJ CORBETT, MAKAYLA LAKE, HAYLEY LONGACRE, ELIZABETH SIMPSON
DECK/SHIFT CREW	ALEXANDRA ENMARK, AJ CORBETT, DARBY PARKS, YA MI VANG
PROP SHOP LEAD	MOLLY BAZAR
PROPS RUN CREW	LIAM FREIBOTT, JESSI MILLER

# CREATIVE TEAM

---

HEAD ELECTRICIAN

RUBY QUEZADA VALADEZ

LIGHTING SHOP LEAD

LENA CASTRO

LIGHT BOARD OPERATOR

LANDON SWINDLE

SOUND CREW

DANI LITTLE

COSTUME/HAIR & MAKEUP DESIGN MENTOR

SARAH BUSSARD

HOUSE MANAGER

JOSEPH URICK

USHERS

CHLOE NAVARRO, RYLEE AYON, SHAWN  
GORDON, HAYDEN BLAIR

GRAPHIC DESIGN

JOSEPH URICK

DIRECTOR OF SPA/ARTISTIC DIRECTOR/PRODUCER

CHEYLA CLAWSON

**Ed Baker** for the swords used in the  
production

**Erin Bryant & the Bethel University**

**Costume Shop** for the renting of several  
costume pieces

**The Office of Student Accommodation and  
Testing** for their aid in providing an ASL  
Interpreter for the Saturday performance

**The Performing Arts Angels** for all  
they do to support SPA  
productions

**School of  
Performing Arts  
Faculty and Staff**  
for everything

*Special  
Thanks*

# BIOGRAPHIES

---



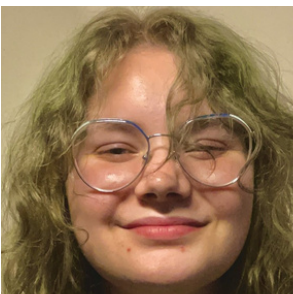
**Trevor Andreasen** (*Sound Designer/Engineer/Composer*) is thrilled about another opportunity to work on a Wichita State University production, this time *Twelfth Night*. Previously, he worked as Sound Board Operator on Wichita Contemporary Dance Theatre Spring Concert (WSU), as Co-Director on *Smokefall* (Empty Space Theatre), and Sound Designer on *A Chorus Line* (WSU). Trevor is a junior on his way to earning a Bachelor of Arts in Performing Arts with a concentration in Theatre, studying sound design, directing, and performance. Head Carpenter/Fabricator at the scene shop and runs the Improv Troupe at Empty Space Theatre, he keeps himself busy with the work he loves. Trevor believes in art's ability to bring new perspectives and modes of understanding to audiences all over and dedicates his time in the theatre to this endeavor, as well as giving people the best experience possible on their night out. You can find out more about Trevor and his work at his website [www.trevorandreasen.com](http://www.trevorandreasen.com).



**Owen Balman** (*Duke Orsino*) is making his Wichita State University theatre debut. His favorite previous credits include *Disorder in the Court* (Conway Springs HS), *The Three Musketeers: All Swash and No Buckle* (Conway Springs Community Theatre) and *Murder at the Pie Auction* (Conway Springs Community Theatre). Owen is a senior pursuing a Bachelor of Arts degree in Communication with an emphasis in Integrated Marketing Communications and a minor in Theatre. He is a member of the WSU Mortar Board Honor Society and Shocker Ad Lab. Owen's mission is to keep pursuing his passion for theatre alongside his main career in communications after graduation by auditioning for shows in Wichita and his hometown. Through his performances, he hopes to "enhance and encourage lives by showing people the importance of doing what makes them happy and living in the moment."



**Katie Bauman** (*Assistant Scenic Designer*) is excited to be working on Wichita State University theatre's production of *Twelfth Night*. Previous credits include Spot Operator on *A Chorus Line*, and Scenic Carpenter at the Theatre In The Park.

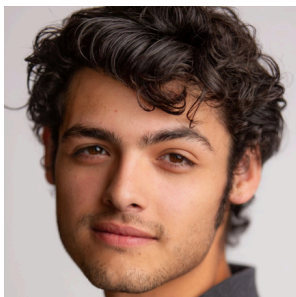


**Molly Bazar** (*Properties Supervisor*) is so excited to show off their work on Wichita State's theatrical production of *Twelfth Night*. Having worked previously on *Peter and the Starcatcher* (WSU) and *Smokefall* (Empty Space Theatre) as Props Artisan, working as deck chief in *A Chorus Line* (WSU), and part of the crew for the 2023 *Compendium* anthology film (WSU). Molly is currently a senior and is planning to graduate in 2025 with a Bachelors of Fine Arts in Performing Arts with a concentration in Design & Technical Theatre and a Bachelors of Applied Arts in Media Arts with a concentration in Filmmaking. Molly works in the scene shop helping build shows like *Pippin*, *A Chorus Line*, *Stupid F#@king Bird*, and *Peter and the Starcatcher*. They also work as the Shop Lead in the properties shop. Molly's mission is simple, to help in the creation of something fantastic.



# BIOGRAPHIES

---



**Israel Carreno** (*Masculine Understudy*) Previously, Israel appeared in *Peter and the Starcatcher* (Wichita State University), *The Trail to Oregon!* (Wichita State Musical Theatre Company) and *Legally Blonde* (Perry Le-Compton High School). Israel is a sophomore pursuing a Bachelor of Fine Arts in Performing Arts with a concentration in Theatre Performance and a minor in Musical Theatre and is a member of the Wichita State Musical Theatre Company (WSMTC). Israel's mission as an artist is "to inspire others and to have a positive impact on the world."



**Cheyla Clawson, MA, MFA** (*Director of SPA/Artistic Director/Producer*) is an Associate Professor of Dance and the Director of the School of Performing Arts at Wichita State University. Chandler's modern dance research is focused on Horton Technique, and she attended the Horton Dance Technique Certificate Program 2013-2020 at The Ailey School in NYC. Her two duets, *Anam Chara* (2014) and *nosuchSymbiosis* (2016) were invited to The American College Dance Association National Festival at The Kennedy Center in Washington, D.C. Cheyla presented her latest research focused on community integration curriculum in dance performance degrees at The International Arts in Society conference in June 2022 (Australia), gave a workshop on Dance and Diversity, Equity, and Inclusion for the American College Dance Association online National Workshop series in March of 2021 as well as community-based intergenerational research at The American Dance Symposium in NYC in January of 2023. At WSU, Cheyla is a member of the Student Success and Persistence Coalition, the President's Diversity Council, and the University Assessment Committee. She coordinates the College of Fine Arts Diversity, Equity, Inclusion, Access, and Belonging Committee and is a doctoral candidate in the Educational Leadership Program. Beyond WSU, Cheyla is a Policy Board Member for the National Dance Education Organization.



**Delaney Davis** (*Assistant Stage Manager*) is excited to be making her main stage debut at Wichita State University. Her previous credits include Assistant Stage Manager on *Smokefall* (Empty Space), Production Assistant on *Finding Nemo Jr.* (Hands on Theatre Training), and *Seussical Jr.* (HOTT). Delaney is a senior pursuing a Bachelor of Arts in Performing Arts with a concentration in Theatre. Delaney's mission is to learn all she can before graduating.

# BIOGRAPHIES

---



**Sky Duncan** (*Antonio*) is excited to be making their Wichita State University Theatre debut. Previous credits include Ragueneau in *Cyrano de Bergerac* (Kechi Playhouse), Sal in *Pass Go* (Empty Space), and Voice of Reason in *Compendium* (WSU). Sky is a senior pursuing a Bachelor of Arts in Performing Arts with a concentration in Theatre. His mission is to bring characters to life through the use of voice, staged theatrical violence, and stunt work.



**Carson Ediger** (*Sir Toby Belch*) is excited to be performing in Wichita State University's production of *Twelfth Night*. He has previously performed in *Peter and the Starcatcher* (Wichita State University), *Compendium* (WSU), and *Framed* (Independent Film). Carson is a Senior working towards a Bachelor of Fine Arts in Performing Arts with a concentration in Theatre Performance and a minor in Graphic Design, as well as certificates in Directing, Voice Acting, and Filmmaking. Carson's mission as an artist is "to bring all people together through emotional entertainment." You can find out more about Carson on his website at [carsonpayne.com](http://carsonpayne.com)



**Colton Farmer** (*Sir Andrew Aguecheek*) is excited to make his Wichita State University Theatre debut. He has previously appeared in Andale High School's productions of *Into the Woods*, *Shrek the Musical*, and *Murder on the Orient Express*. Farmer is a freshman pursuing a Bachelor of Fine Arts in Performing Arts with a concentration in Theatre Performance, and is a member of Empty Space Theatre's Improv Troupe and the Student Ambassador Society. Farmer's mission as an artist is "to convey what we often neglect to realize about ourselves." For inquiries, please email [colton.jnf@gmail.com](mailto:colton.jnf@gmail.com).



**Emily Flowers** (*Costume/Hair & Makeup Designer*)(she/her) is thrilled to be working on Wichita State's production of *Twelfth Night*! Her previous credits include Costume Designer/Rental Coordinator for WSU's *A Chorus Line*. Emily is a junior pursuing a Bachelors of Fine Arts In Performing Arts with a concentration in Design and Technical Theatre. Her current mission is to spread the love of the arts to anyone who will listen. You can find more about her at her website: <https://emilyflowers04.wixsite.com/emily-flowers-portfo>

# BIOGRAPHIES

---



**Kelsi Harris** (*Olivia*) is making their Wichita State University Theatre debut. Kelsi is a transfer student from Butler Community College; previous credits include *Cyrano De Bergerac* (Kechi Playhouse), *Harvey* (Butler Community College), and *Picnic* (Kechi Playhouse).



**Jessica Hudson** (*Assistant Director*) is estatic to be a part of this incredible production of *Twelfth Night*! This is her main stage directing debut and is so beyond thankful to Joseph Urick for letting her learn and work alongside him on her last main stage production. Previously, she co-directed Empty Space Theatre's production of *Smokefall*. Jessica is in her final year here at Wichita State University studying a Bachelor of Arts in Performing Arts with a concentration in Theatre and a minor in American Sign Language, as well as a Directing certificate. She also works in the School of Performing Arts Office as a Student Assistant. To learn more about Jessica check out her website!

<https://sites.google.com/view/jessicahudsonmakeup-com/home>



**Riley Johnsen** (*Valentine/A Priest*) is excited to make his Wichita State University theatre debut. Riley graduated from Conway Springs High school and has previously appeared in the shows *The Wonderful Wizard of Oz* (Wellington Community Theater), *Cinderella! Cinderella!* (CSHS), and *Dirty Work on the Trail* (Conway Springs Community Theater). Riley is a freshman pursuing a Bachelor of Arts in Performing Arts with a concentration in Theatre, and a Directing certificate, and is honored to receive the Chrissy Solter Memorial Scholarship which helps him pursue his love for the arts.



**Aubrey Johnson** (*Feminine Understudy*) is so excited to be a part of this production with Wichita State University's School of Performing Arts! Her previous involvements in School of Performing Arts include performing as Joyce in *Mama Bushwick is Dead* at Welsbacher Theatre and Ensemble in *Peter and the Starcatcher* at Wilner Auditorium. Aubrey is pursuing a Bachelors of Fine Arts in Performing Arts with a concentration in Theatre, and a Music Theatre minor and can't wait to see what the future holds!



# BIOGRAPHIES

---



**Ben Juhnke** (Production Coordinator/*Lighting Designer*) earned his Bachelors of Fine Arts in Performing Arts with a concentration in Technical Theatre and Design from Wichita State University and has been working locally in the Wichita theatre community ever since. Ben served 10 years as the Production Stage Manager for the Wichita Symphony Orchestra and has worked on 25 Seasons of Productions with Music Theatre of Wichita. His credits include productions for: The Forum Theatre, Wichita Grand Opera, *Titanic* National Tour, *Wicked* National Tour, Northwest Nazarene University, Aspen Community Theatre, Rob Thomas, 24 Hrs to Hell and Back, New Years Day, Steven Curtis Chapman, Rich Mullins Tribute Tour and Super Bowl Live. Since 2002 Ben has been a proud member of the local Stagehands Union. When not working in the Arts he runs a Disney Travel business connecting people with their Dream Disney Vacation. He has always found joy in connecting people to the arts. Ben would like to thank his loving wife Emily, and their two daughters Hope and Ellie for all their support.



**Makayla Lake** (*Assistant Props Artisan*) is elated to have hopped on the ship for Wichita State's production on *Twelfth Night*! She was previously seen as the Scenic Designer for Empty Space Theatre's *Smokefall* and the Props Designer for Wichita State Musical Theatre Company's *The Trail to Oregon*!. Makayla is currently a junior pursuing a Bachelor of Arts in Performing Arts with a concentration in Theatre, hoping to pursue a career in theatre education. Alongside her design work, she is also the Marketing Director for Wichita State Musical Theatre Company. Makayla is passionate about bringing stories to life through creative design and looks forward to expanding her skills in future productions.



**Emma Lewis** (*Assistant Costume/Hair & Makeup Designer*) is a senior pursuing a Bachelors of Arts in Performing Arts with a concentration in Theatre at Wichita State University, and a certificate in Film Studies. She is also a member of the Honors College and works in the costume Shop on campus. She is a Costume Designer from Denver, Colorado. Emma has previously worked on *The Scarlet Letter* (Wardrobe Crew), *Stupid Fucking Bird* (Wardrobe Supervisor), Wichita Contemporary Dance Theatre Concert and Film (Costume Designer), for the dance piece *seenUnseen*, *Mama Bushwick is Dead* (Costume/Hair and Makeup Designer), and *A Chorus Line* (Hair and Makeup Supervisor). Emma has also done her first internship with Music Theatre Wichita in the costume shop department for the musical *Cats* and just finished her first contract with Celebrity Cruises this summer as a Wardrobe Stitcher. She is very excited to be working on *Twelfth Night* to kick off the school year. Emma is also very excited for current and future projects at WSU to expand her experience during this last year before graduation.



**Dani Little** (*Assistant Sound Designer*) is thrilled to be working on Wichita State University's production of *Twelfth Night*. Previous credits include Sound Designer for *The Little Mermaid* and *Willy Wonka* with the Junior Woodland Players. Dani is a sophomore pursuing a Bachelor of Fine Arts in Performing Arts with a concentration in Design and Technical Theatre, and a certificate in Audio Production.

# BIOGRAPHIES

---



**Hayley Longacre** (*Feste*) is not fooling around about their final performance on the Wilner stage. She will be graduating in the fall of this year with a Bachelor of Fine Arts in Performing Arts with a concentration in Theatre Performance. Hayley is a transfer student from Tulsa Community College in Oklahoma and has been going to Wichita State University since 2022. Previously, she has appeared in *Smokefall* (Empty Space Theatre), *Peter and the Starcatcher* (WSU), and *A Midsummer Night's Dream* (Empty Space Theatre). Outside of school, she appeared in ICTrep's production of *The Importance of Being Earnest* as Cecily Cardew. They plan to stay in Wichita post-graduation, and you can find them @hayleylongacre on Instagram!



**Lynnaya McClure** (*Viola*) is incredibly excited to be involved in *Twelfth Night*, her last mainstage show at Wichita State University. Four years ago, she performed in a virtual production of *Twelfth Night* in high school, and she is so happy to revisit this piece in a live performance. She is a senior Bachelor of Fine Arts in Performing Arts major with a concentration in Theatre Performance with minors in Business and Music Theatre, as well as a certificate in Directing. Previous credits include Gremplin in *Peter and the Starcatcher* (WSU), Titania in *A Midsummer Night's Dream* (Empty Space Theatre), and Mote in *Love's Labor's Lost* (WSU). Lynnaya is also a director, making her lead directorial debut with *Mama Bushwick is Dead* last fall. She is the president of Fight Club (a stage combat organization) and a member of the Cohen Honors College.



**Alec Moore** (*Scenic Designer*) is delighted to be working on Wichita State University's production of *Twelfth Night*. He has previously worked as Scenic Designer for *Mama Bushwick is Dead* (WSU), Assistant Lighting Designer for *A Chorus Line* (WSU), and Lighting Designer for *How to Make Friends and then Kill Them* (Clark Youth Theatre). Alec is a third-year student pursuing a Bachelor of Fine Arts in Performing Arts with a concentration in Design and Technical Theatre, and is Co-Technical Director of WSU's Empty Space Theatre.



**Sara Moore** (*Maria*) is a Bachelors of Arts in Performing Arts major with a concentration in Theatre, where she is passionately honing her craft in the performing arts. Currently in her third stage performance, Sara brings a dynamic energy to every role, showcasing her dedication to storytelling and character development. Sara was previously seen in Wichita State Musical Theatre Company's *The Trail to Oregon!* earlier this year. This is also her first Shakespeare production, marking an exciting milestone in her theatrical journey. Before diving into her studies, Sara gained valuable experience in the film industry as both an actor and producer, allowing her to explore various facets of performance and production. This diverse background has enriched her perspective and influences her current work on stage.

# BIOGRAPHIES

---



**Leopold Porcaro** (*Curio/A Sea Captain*) is excited to be making his mainstage acting debut! Previously he has served as the Scenic/Hair and Makeup Designer for *The Trail to Oregon!* (Wichita State Musical Theatre Company). He is currently Co-Scenic Designing *Spring Awakening* (Wichita State University) with fellow castmate Fio Willis, which will debut in February 2025. He has also appeared as Theseus/Mustardseed in *A Midsummer Night's Dream* (Empty Space Theatre). Leopold is a junior pursuing a Bachelor of Fine Arts in Performing Arts with a concentration in Design and Technical Theatre. Leopold's mission is to spread the joys of humanity through art.



**Jesse Stephenson** (*Stage Manager*) is incredibly honored and excited to be a part of Wichita State University's *Twelfth Night*. He has also been a part of WSU's productions of *Pippin* and *A Chorus Line*, serving as Assistant Stage Manager on both shows, and last semester's production of *Peter and the Starcatcher* as Stage Manager. Jesse is a junior studying for his Bachelor of Fine Arts in Performing Arts with a concentration in Design and Technical Theatre and a Stage Management certificate. He also works in the scene shop as a Scenic Carpenter. You can see more of Jesse's work on his website <https://jjsteph13.wixsite.com/jstephensontechnical>



**Erin Urick** (*Intimacy Director*) Erin Urick (Intimacy Director) is grateful for another opportunity to work with Wichita State University student performers. Erin stage managed *Le Nozze di Figaro* with the Music department and assisted with intimacy choreography for *Peter and the Starcatcher* as well as the 24-Hour Play Festival. Erin has also staged intimacy for Kechi Playhouse (*Cyrano De Bergerac*), Wichita Community Theatre (*Puzzle with the Piazza*), and ICT-Rep (*Boeing Boeing*).

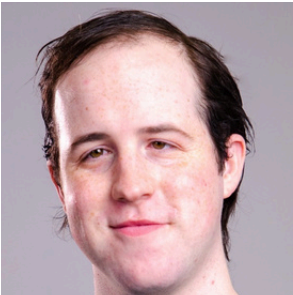


**Joseph Urick** (*Director/Fight Choreographer*) is the Assistant Professor of Acting & Voice at Wichita State University. Joseph is an award-winning actor from New York City and has performed nationally and internationally for theatres in Florida, Kansas, New York, Texas, as well as in Greece. Joseph has produced staged violence for over 75 shows over the past decade, as well as combat and self-defense videos with police department in both Texas and Florida for their Active Shooter Safety Videos and Domestic Violence Awareness Training Programs. Joseph has produced several acclaimed productions, including *Rooms: A Rock Romance*; *Nevermore* (Edgar Allan Poe), *Quills* (Doug Wright), *Race* (Dave Mamet), a Regional Tour of Jason Robert Brown's *The Last 5 Years*, and most recently, an adaptation of *Cyrano de Bergerac* at Kechi Playhouse. Joseph is a proud member of Actor's Equity. Masters of Fine Arts in Acting, University of Florida. AAC/SAFD. [josephurick.com](http://josephurick.com)



# BIOGRAPHIES

---



**Nolan Whitney** (*Malvolio*) is making his Wichita State University Theatre debut. He has previously appeared in *Noises Off!* (Norfolk Community Theatre), *Anything Goes* (NCT), and *Taxi Cabaret* (Northeast Community College). Nolan is a senior pursuing a Bachelors of Applied Arts in Media Arts with a concentration in Acting for Digital Arts and a certificate in Voice Acting, and is a member of Wichita State's Stage Combat Club. Nolan's mission as an artist is "to create stories that make you forget you're watching fiction."



**Fio Willis** (*Sebastian*) is thrilled to be making their mainstage debut in this production! Previous credits include *Smokefall* (Empty Space Theatre) and *1776* (Theatre Tulsa). Fio is a sophomore pursuing a Bachelor of Arts in Performing Arts with a concentration in Theatre and a minor in Art and Design. They also serve as the Outreach Chair for Empty Space Theatre. Fio's mission as an artist is to "always be learning and feeling big feelings." You can find them patronizing a variety of local coffee shops.



**LIKE and FOLLOW**



@wichitastateSPA



@wsu\_spa



[wichita.edu/spa](http://wichita.edu/spa)

# COMING SOON

DANCE AT ULRICH  
NOVEMBER 15,  
2024

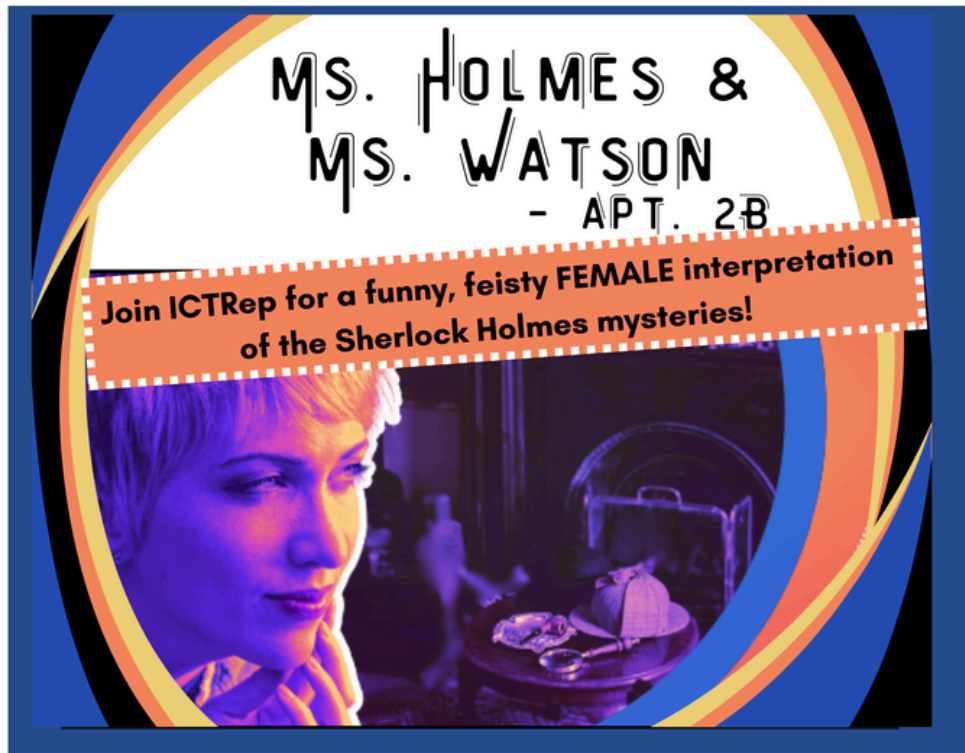


*DECEMBER 5, 2024*  
**DANCE  
INFORMAL**

DANCE INFORMAL  
DECEMBER 5,  
2024



Wichita Repertory Theater  
*Dramatically Good.*



Use the promo code **"WSU-SPA"** for  
**10% off your tickets at**  
**[www.ICTRep.org](http://www.ICTRep.org)**

Kate Hamill's **MS. HOLMES & MS. WATSON - Apt. 2B** is a highly theatrical, small-cast escapade. Oddball female roommates **Sherlock Holmes & Joan Watson** join forces to emerge from pandemic fog to solve mysteries and kick butts in this modern, darkly comic romp.



**November 14-17**

Thursday @7:30pm  
Friday @7:30pm  
Saturday @2pm  
Sunday @7:30pm

at the  
**Welsbacher Theater**  
5015 E. 29th St. N.  
WSU Metroplex, Door F

**MS. HOLMES & MS. WATSON - APT. 2B** is presented through special arrangement with TRW Plays  
1180 Avenue of the Americas, Suite 640, New York, NY 10036 [www.trwplays.com](http://www.trwplays.com)



**ALFRED S. & ESTHER U PERRY ENDOWED  
MEMORIAL SCHOLARSHIP IN FINE ARTS**

Lexye Collins  
Delaney Davis  
Nicholas Macias  
Jesse Stephenson  
Alyssa Watson

**AUDREY NEEDLES SCHOLARSHIP FUND**  
Morgan Holcomb

**BRETT NEFF MEMORIAL SCHOLARSHIP**  
Lynnaya McClure

**CHARLIE WHITWORTH THEATER  
SCHOLARSHIP**  
Imani Perkins

**DELORES AND CHARLES CRUM MAINSTAGE  
THEATRE SCHOLARSHIP**

Trevor Andreason  
Jordan Bodenhamer  
Dylan Bray  
Lena Castro  
Alexis Driscoll  
Morgan Holcomb  
Liliana Jimenez  
Ace La Valla  
Sara Moore  
Seferino Ramirez  
Reuben Scheck  
Makayla Lake  
Fio Willis

**DR. FORREST E. RICHERT MEMORIAL  
ENDOWED SCHOLARSHIP**  
Alexandria Thanscheidt

**ELEANOR DOTY CLAIR SCHOLARSHIP**  
Morgan Holcomb

**GEORGE D. WILNER ACHIEVEMENT AWARD  
(SCHOLARSHIP)**  
Lynnaya McClure

**HICKMAN SCHOLARSHIP PERFORMING ARTS  
MUSICAL THEATRE**  
Jyavon Hill  
Frances Robu

**JANICE CHAMBERS RAMSEY  
SCHOLARSHIP IN MUSICAL THEATRE**  
Von Love  
Gracie Solas

**JON AND KELLY CALLEN MUSICAL  
THEATRE ENDOWED SCHOLARSHIP**  
Lexye Collins  
Xavier Huffman

**JOYCE CAVAROZZI ENDOWED  
SCHOLARSHIP IN THEATRE**  
Lynnaya McClure

**JULIAENNE WEAVER MASTERS THEATRE  
SCHOLARSHIP**  
Imani Perkins

**JUNE M. LAIR ENDOWMENT FOR THE  
ARTS (SCHOLARSHIP)**  
Emily Flowers

**KIM STEPHENS MEMORIAL ENDOWMENT  
FOR EXCELLENCE IN DANCE  
(SCHOLARSHIP)**  
Lille Nightingale

**LINDA STARKEY MUSICAL THEATRE  
SCHOLARSHIP**  
Lexye Collins

**LULU BONAVIA DANCE SCHOLARSHIP**  
Rylee Ayon  
Shawn Gordon  
Olivia Lockwood  
Cassidy McCallister  
Samantha Zimmerman

**MARCUS FAMILY ENDOWED  
SCHOLARSHIP FOR EXCELLENCE IN THE  
FINE ARTS**  
Lille Nightingale

**MARJORIE LOIS GRAHAM SCHOLARSHIP**  
Lynnaya McClure  
Lille Nightingale  
Cobie Reeves  
Reuben Scheck  
Lucas Shroyer

**MARTHA M. FLEMING DANCE SCHOLARSHIP**

Lille Nightingale

**MARY JANE TEALL THEATRE SCHOLARSHIP**

Morgan Holcomb  
Seferino Ramirez

**MICKEY AND PETE ARMSTRONG  
PERFORMING ARTS SCHOLARSHIP**

Kimberly Aguilar  
Jacob Crabtree  
Zoie Dangerfield

**MILLER TRUST - COLLEGE OF FINE ARTS**

Alaycea Kremeier  
Cooper Green  
Nicholas Macias  
Lille Nightingale  
Cobie Reeves  
Samantha Zimmerman

**MILLER TRUST - DRAMA**

Elena Cianciolo  
Lexye Collins  
Gabriel Cornwell  
Delaney Davis  
Nicholas Dreier  
Sean Gorman  
Xavier Huffman  
Dani Little  
Lynnaya McClure  
Darby Parks  
Leopold Porcaro  
Ruby Quezada Valadez  
Ava Rivera  
Frances Robu  
Lucas Shroyer  
Ya Mi Vang  
Alyssa Watson  
Ava Wiechman

**PAMELA J. POSTIER PERFORMING ARTS  
SCHOLARSHIP**

Olivia Lockwood

**PATRONS OF MUSIC THEATRE**

Gabriel Cornwell  
Xavier Huffman

**PERFORMING ARTS ANGELS**

Colton Farmer  
Skylar Lane  
Annika Lindeman  
Grace Ryan

**PERFORMING ARTS ANGELS -  
MARKETING SCHOLARSHIP**

Dylan Bray  
Blake Grimsley  
Alaycea Kremeier

**RANDAL M. JONES ENDOWED  
SCHOLARSHIP**

Xavier Huffman

**SCHAEFER, JOHNSON, COX, FREY &  
ASSOCIATES, P.A. ENDOWED  
SCHOLARSHIP**

Gracie Solas

**STEV OVERSTREET DEAN'S FUND IN FINE  
ARTS**

Hayley Loya

**TURTLE SCHOLARSHIP FOR DANCE**

Alaycea Kremeier  
Olivia Lockwood  
Kaete Mokrynski

**VAN & VIRGINIA LEE FISER END MEM  
/OPERA/MUSIC THEATRE**

Gabriel Cornwell  
Von Love





# The Kennedy Center

*The Kennedy Center American College Theater Festival, part of the Rubenstein Arts Access Program, is generously funded by **David M. Rubenstein**.*

*Special thanks to The Harold and Mimi Steinberg Charitable Trust for supporting the John F. Kennedy Center for the Performing Arts' Kennedy Center American College Theater Festival.*

*Additional support is provided by The Honorable Stuart Bernstein and Wilma E. Bernstein; and the Dr. Gerald and Paula McNichols Foundation.*

*Kennedy Center education and related artistic programming is made possible through the generosity of the National Committee for the Performing Arts.*

This production is entered in the Kennedy Center American College Theater Festival (KCACTF). The aims of this national theater education program are to identify and promote quality in college-level theater production. To this end, each production entered is eligible for a response by a regional KCACTF representative, and selected students and faculty are invited to participate in KCACTF programs involving scholarships, internships, grants and awards for actors, directors, dramaturgs, playwrights, designers, stage managers and critics at both the regional and national levels.

Productions entered on the Participating level are eligible for invitation to the KCACTF regional festival and may also be considered for national awards recognizing outstanding achievement in production, design, direction and performance.

Last year more than 1,500 productions were entered in the KCACTF involving more than 200,000 students nationwide. By entering this production, our theater department is sharing in the KCACTF goals to recognize, reward, and celebrate the exemplary work produced in college and university theaters across the nation.



**The Performing Arts Angels** exists to provide educational and training opportunities for talented dance, musical theatre, and theatre (performance and design/tech) students in the School of Performing Arts - opportunities not funded through the state or university.

The School of Performing Arts faculty, staff, and students recognize and deeply appreciate all your financial support. It allows us to fulfill our mission to educate and train students for a career in the arts and entertainment industry. To find out how you can become a Performing Arts Angel and support the School of Performing Arts students, please contact our office at 316-978-3078 or give online at [www.wichita.edu/give](http://www.wichita.edu/give).

*We apologize in advance for any omission or errors in this list. Please bring corrections to the attention of Caleb Fouse at [caleb.fouse@wichita.edu](mailto:caleb.fouse@wichita.edu) or 316-978-7266. Listings may shift from one program to another depending on the timing and receipt of gifts.*

### **Giving for September 2023 - October 2024**

#### **PRODUCER (\$1,000 +)**

Marty & Donna Perline  
Jerry Martin  
Stev Overstreet  
Sally Ottaway  
Gary Wood  
Jane McHugh  
Anita Jones  
Chris Kubik  
Julie and Stan Longhofer  
Alan & Sharon Fearey  
Louise Brinegar & Gene Carr  
Margaret Fulton-McKay  
Richard & Cynthia Carl  
Marlene Hayes  
Emily Bonavia  
Paul & Michelle Witte

#### **DIRECTOR (\$500-\$999)**

Pam Postier  
Raymond & Diane Gans  
Harriet Hickman  
Dee & Linda Starkey  
Keith & Georgia Stevens  
Walter & Kaye Myers  
Shoko Severt  
Cheyla & Harris Clawson Chandler  
Jack Silvers  
Denny & Sherry Grady  
Marie Bukowski

#### **CHOREOGRAPHER (\$200-\$499)**

Dennis & Genell Arnold  
Daniel & Martha Housholder  
Hew & Judy Goodpasture  
Pete & Renea Goforth  
Thom & Adrienne Rosenberg  
Wendy Hanes  
Steven & Kitchel Woods  
Deborah Gafvert & Kenneth Gibbs  
Nancy Anderson



# Performing Arts Angels

---

CONTINUED FROM PREVIOUS PAGE

## **DESIGNER (\$100-\$199)**

Eric Engstrom  
David Stone & Marni Vliet Stone  
Harold & Evelyn Gregg  
Alan & Nancy Brodovsky  
Deb Brinegar & John Diel  
John & Mary Shellito  
James & Lisa Vayda  
Ann Marie Siegwarth  
Rodney Miller & Pina Mozzani  
Nathan Miller  
Marlene Markley  
Matt Fisher  
Kathleen Moore  
Tina & Tim Zimmerman

## **PERFORMER (\$25-\$99)**

Anne Welsbacher  
Johanne Pachankis  
Pat & Sandy Hannon  
Ali Levine  
Rob, Denise & Arri Simon  
Magnus & Marena Assarsson  
Mandy & Caleb Fouse  
Aaron & Becky Winter  
Nadia Karim  
Rebekah Winter



*Thank you  
Angels!*



**SPA**  
SCHOOL of  
PERFORMING ARTS

# Performing Arts Angels

*Everyone Can Be An Angel*

Visit [wichita.edu/give](http://wichita.edu/give) to become a member online with a credit card, or complete the form below, enclose a check (payable to the WSU Foundation/Performing Arts Angels) and send by mail to:  
1845 Fairmount, Campus Box 2, Wichita, KS 67260.

- |                          |               |           |
|--------------------------|---------------|-----------|
| <input type="checkbox"/> | Producer      | \$1,000+  |
| <input type="checkbox"/> | Director      | \$500-499 |
| <input type="checkbox"/> | Choreographer | \$200-499 |
| <input type="checkbox"/> | Designer      | \$100-199 |
| <input type="checkbox"/> | Performer     | \$25-99   |

Contact Name: \_\_\_\_\_

Phone #: \_\_\_\_\_ Email: \_\_\_\_\_

Address: \_\_\_\_\_

City/State: \_\_\_\_\_ Zip Code: \_\_\_\_\_

[Wichita.edu/give](http://Wichita.edu/give)