

A Chorus Line



Nov. 2-4, 2023 @ 7:30pm
Nov. 5, 2023 @ 2pm
Wilner Auditorium

Conceived and Originally Directed
and Choreographed by

Michael Bennett

Book by

**James Kirkwood Jr.
& Nicholas Dante**

Music by

Marvin Hamlisch

Lyrics by

Edward Kleban

Co Choreographed by

Bob Avian



\$20, \$18, \$12
1 Free Student Ticket
with MyWSU ID

Box Office: 316-978-3233
Scan QR code to purchase tickets!



Follow us on
social media!





THE SCHOOL OF PERFORMING ARTS
PRESENTS



A CHORUS LINE

Conceived and Originally Directed and Choreographed by Michael Bennett

Book by James Kirkwood and Nicholas Dante

Music by Marvin Hamlisch

Lyrics by Edward Kleban

Co Choreographed by Bob Avian

DIRECTOR/CHOREOGRAPHER

Amy Baker Schwiethale

MUSIC DIRECTOR

Emily Orr

PRODUCTION COORDINATOR

Melissa Penkava Koza

STAGE MANAGER

Renae Richmond

ASSISTANT STAGE MANAGER

Jesse Stephenson

ASSISTANT STAGE MANAGER

Ace La Valla

SCENIC DESIGNER/
TECHNICAL DIRECTOR

Ed Baker

REHEARSAL ACCOMPANIST

JuleAnn Troutman

COSTUME DESIGNER/
RENTAL COORDINATOR

Emily Flowers

HAIR & MAKEUP DESIGNER

Jessica Hudson

ASSISTANT HAIR AND MAKEUP
DESIGNER

August Smaglik

LIGHTING DESIGNER

Ben Juhnke

SOUND DESIGNER

Trevor Andreasen

PROPS DESIGNER

Ben Bolinger

PRODUCER

Cheyla Clawson Chandler

A CHORUS LINE IS PRESENTED BY ARRANGEMENT WITH CONCORD
THEATRICALS ON BEHALF OF TAMS-WITMARK LLC.

WWW.CONCORDTHEATRICALS.COM

ORIGINAL BROADWAY PRODUCTION PRODUCED BY THE NEW YORK SHAKESPEARE
FESTIVAL, JOSEPH PAPP, PRODUCER, IN ASSOCIATION WITH PLUM PRODUCTIONS, INC.

Note from the Director

It has been 22 years since Wichita State University produced *A Chorus Line* in 2001 with only one other production here in 1986. It is a show that demands the perfect storm of strong dancers, diverse performers, a passionate and capable production team, and a critical moment in time where our everyday lives seem to be filled with massive uncertainty. These conditions seem to only present themselves every 20 years or so at WSU- marking this a special occasion for the School of Performing Arts. So, welcome! You are about to be thrust into a Broadway audition in 1975!

A Chorus Line debuted in 1975 and ran for 15 years (6,137 performances) and brought Broadway, and in turn, New York City tourism back to life and led to the revitalization of Times Square. It is easy for *A Chorus Line* to feel timeless in many ways, as it speaks to the universal performer experience and putting oneself on the line for what you love. However, it was important in our approach to not situate these characters in 2023. We found it far more fascinating and educational to keep the story in the 1970s, the years the story was created based on real people's lives, and to explore the relativity of our shared human experiences regardless of time period.

Choosing this show has allowed us as a school to have an open dialogue about responsible casting practices, have difficult discussions about assumptions and stereotypes, delve into research methods with Director Cheyla Clawson Chandler, and find new and effective ways of developing character and analyzing a script and score. This led to a much more collaborative casting approach utilizing students from across multiple Fine Arts majors and bringing in guest artist alum, Ariel Glorsky-Seyl.

Albeit challenging and at times frustrating for the students, I believe it was vital for the students' growth to give them Michael Bennett's Original Broadway Choreography, a precise and nuanced style counterintuitive to contemporary ways of moving. In addition to the incredible dance demands that pushed the students in new and profound ways, Assistant Professor Sheldon Mba served as Dramaturg to help the students apply research, development, and analysis into action on stage. Students also worked individually with Assistant Professor Joseph Urick on diction, projection, and accents. At every turn, Visiting Assistant Professor Emily Orr helped the students understand how to analyze the musical score to see that the truth of the show and the root of the characters is embedded in the music. For 16 weeks, the Design & Technical Theatre faculty and school staff created, built, and mentored student designers and production team leaders to make "the magic" of theater possible. As much as we hope you enjoy our production, it is our greatest hope that our students received a valuable applied learning experience this semester.

Here's to everyone putting themselves on the line for love.

Amy Baker Schwiethale

Director/Choreographer

Professor of Musical Theatre

Wichita State University

Mary Sue Dymak and Music Theatre Wichita for the finale costume package

Performing Arts Angels for supporting alumni and guest artist, Ariel Glorsky-Seyl

Ben Juhnke as Guest Lighting Designer

Molly Tully as Guest Intimacy

Consultant

School of

Performing Arts

Faculty and Staff

for everything

*Special
Thanks*

FACULTY/GUEST ARTISTS



Amy Baker Schwiethale (*Director/Choreographer*) is a Professor and the Program Director of Musical Theatre & the Associate Director of the School of Performing Arts at Wichita State University, where she has been teaching musical theatre and dance for 15 years. Prior to that she lived in New York City where she performed in the First National Broadway Tour of 42nd STREET, with the RADIO CITY CHRISTMAS SPECTACULAR CHRISTMANS ACROSS AMERICA, SINGIN' IN THE RAIN at the Westchester Broadway Theatre, and has also spent 5 summers performing in the Music Theatre of Wichita Company and played "Anytime Annie" in 42ND STREET. She has been honored by the National Kennedy Center American College Theatre Festival for her Direction and Choreography of SMOKEY JOE'S CAFÉ. Her Direction and Choreography Credits include Music Theatre Wichita, the New York Jazz Choreography Project & Traditions in Tap at the Alvin Ailey Studios New York City, and in numerous capacities at Prairie Repertory Theatre and Wichita State University. This one is for my Mother. The amazing woman that built me, drove 45 minutes one way to dance class every night, sacrificed, supported, gave all she could, and is the reason why I so easily say, "I am a dancer."



Cheyla Clawson Chandler, MA, MFA (*Research Coordinator/Producer*) is an Associate Professor of Dance and the Director of the School of Performing Arts at Wichita State University. Chandler's modern dance research is focused on Horton Technique, and she attended the Horton Dance Technique Certificate Program 2013-2020 at The Ailey School in NYC. Her two duets, Anam Chara (2014) and nosuchSymbiosis (2016) were invited to The American College Dance Association National Festival at The Kennedy Center in Washington, D.C. Cheyla presented her latest research focused on community integration curriculum in dance performance degrees at The International Arts in Society conference in June 2022 (Australia), gave a workshop on Dance and Diversity, Equity, and Inclusion for the American College Dance Association online National Workshop series in March of 2021 as well as community-based intergenerational research at The American Dance Symposium in NYC in January of 2023. At WSU, Cheyla is a member of the Student Success and Persistence Coalition, the President's Diversity Council, and the University Assessment Committee. She coordinates the College of Fine Arts Diversity, Equity, Inclusion, Access, and Belonging Committee and is a doctoral candidate in the Educational Leadership Program. Beyond WSU, Cheyla is a Policy Board Member for the National Dance Education Organization.



Ariel Glorsky-Seyl (*Diana*) is thrilled to return to the Wilner stage as an alum and Guest Artist and live out her dream of playing Diana in *A Chorus Line*! Ariel is a Kansas City-based actor, costumer, and creative who graduated with her Bachelor of Fine Arts in Musical Theatre from Wichita State in 2021. During her time at WSU, she had the pleasure of participating in shows like *[title of show]* (Susan), *Anything Goes* (Ensemble), and *The Theory of Relativity* (Amy) under the direction of the fabulous Emily Orr, and was a stitcher in the Wichita State Costume Shop for three years. Since moving to Kansas City in 2021, she's worked with companies such as Lyric Opera of Kansas City (puppeteer, *Amahl and the Night Visitors*), Kansas City Fringe Festival (crew), and Stone Lion Puppet Theatre (puppeteer) on various performance and technical theatre projects. These days, you can find her both teaching and costuming at Miller Marley School of Dance and Voice in Kansas City. Ariel hopes to soon relocate to New York City to continue her passion for theatre, along with her hubby, fellow WSU MT Alum Trevor Seyl. Thank you to the wonderful WSU Performing Arts family for this incredible opportunity, and of course, all her friends and family for their love and support! Enjoy the show!

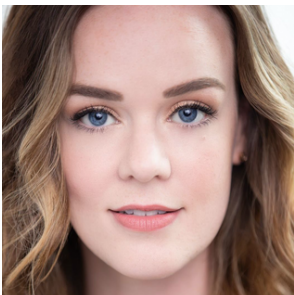
FACULTY/GUEST ARTISTS



Benjamin Juhnke (*Lighting Designer*) Ben earned his BFA in Technical Theatre and Design from Wichita State University and has been working locally in the Wichita theatre community ever since. Ben served 10 years as the Production Stage Manager for the Wichita Symphony Orchestra and has worked on 24 Seasons of Productions with Music Theatre of Wichita. His credits include productions for: The Forum Theatre, Wichita Grand Opera, Titanic National Tour, Wicked National Tour, Northwest Nazarene University, Aspen Community Theatre, Rob Thomas, 24 Hrs to Hell and Back, New Years Day, Steven Curtis Chapman, Rich Mullins Tribute Tour and Super Bowl Live. Since 2002 Ben has been a proud member of the local Stagehands Union. When not working in the Arts he runs a Disney Travel business connecting people with their Dream Disney Vacation. He has always found joy in connecting people to the arts. Ben would like to thank his loving wife Emily, and their two daughters Hope and Ellie for all their support.



Sheldon Mba (*Dramaturg*) is an actor, dancer, choreographer, and director. He received his BA in Theatre and Dance Performance from North Carolina Central University and his MFA in Theatre Performance from the University of Southern Mississippi. Mba has trained and worked with Baba Chuck Davis, Kristi V. Johnson, Gaspard Louis, and various faculty members during his summers at the American Dance Festival. While in North Carolina, he was a member of the NCCU Repertory Dance Company and Koffee Dance Company and is an honorary Artistic Board Member of The Harambee Collective. He is a past member of the Wichita-based Regina Klenjoski Dance Company. His choreography has been featured at The National Black Theatre Festival, American Dance Festival, and various projects throughout North Carolina, Louisiana, Mississippi and Kansas. As an actor, Mba has performed brilliantly in a wide range of roles such as Citizen Barlow in "Gem of the Ocean," Guy Jacobs in "Blues For An Alabama Sky," Peter in "Jesus Christ Superstar," Laertes in "Hamlet," Little Moe in "Five Guys Named Moe," and Brad in "Rocky Horror." Sheldon received a certificate of merit from The Kennedy Center American College Theatre Festival (KCACTF) for his choreography for "Little Women" and "Catch Me If You Can." In August 2023, he will be directing and choreographing the Wichita debut of "Dreamgirls" with the Crown Arts Collaborative.



Emily Orr (*Music Director/Conductor*) is a music director, pianist, conductor, arranger, vocalist, and educator with over 10 years of professional experience. She earned her B.M. in Piano Performance and B.F.A. in Musical Theatre from Wichita State University, and received her M.F.A. in Theatre from Penn State University where she also served as a musical theatre lecturer and music director. For five years, she performed on cruise ships as a singer-pianist in the award-winning live music venue, Billboard Onboard. In 2019, Emily made her directorial debut when she guest directed and music directed The Theory of Relativity at WSU. Her most recent performance credits include 42nd Street (Anytime Annie) and Twelfth Night (Feste) at MTWichita. Notable music directing credits include Brigadoon, Cabaret, Next to Normal, and Adam Guettel's Myths and Hymns. She joined WSU this Fall as the Visiting Assistant Professor of Musical Theatre immediately following her summer music internship with the original creative team of Back to the Future: The Musical on Broadway.

FACULTY/GUEST ARTISTS



JuleAnn Troutman (*Rehearsal Accompanist*) is a graduate of Oklahoma City University with a Masters of Music in piano and organ performance. She is a former piano student of Grace Welch at the American Conservatory and Robert Laughlin at OCU, a former organ student of Wilma Jensen and Antone Godding at OCU. She has performed both as a soloist and as collaborative artist with recitalists, ensembles, productions, and organizations throughout the Midwest and in Mexico. JuleAnn has been employed by Wichita State University as pianist and lecturer for Auditions, Directing a Musical, Scene Study, Senior Capstone Project, and Ballet classes, and served as pianist and rehearsal accompanist for WSU Music Theater and Opera productions for more than twenty years and over 32 productions, including the Region V Kennedy Center American College Theater Festival-selected productions of "Pippin", "The Wild Party", and "Smokey Joe's Cafe." Her work as Musical Director and Arranger for the World Premiere of "Waltzing in Heaven" was awarded at the 2009 Region V KCACT Festival. In addition, JuleAnn is a co-chair and proud member of the WSU Accompanists Guild. In all her spare time, JuleAnn writes science fiction and fairy tales. Her book, "Yvohshihlan: The Guardian," is currently available on Amazon.com.



Molly Tully (*Intimacy Consultant*) is a Wichita based actor, director, choreographer, writer, and intimacy professional. Molly was recently the Intimacy Director for WSU's *Stupid F##ing Bird* and *Pippin* the musical. Molly's other theatrical intimacy work includes MTWichita's *Jersey Boys*, *42nd Street*, and *Kinky Boots* along with the CAC's *Next to Normal*, *The Wedding Singer*, and *The Rocky Horror Show*.



LIKE and FOLLOW



@wichitastateperformingarts



@wsu_spa



wichita.edu/spa

SONGS & MUSICAL NUMBERS

OPENING: "I HOPE I GET IT"	COMPANY
MORALES - UNDERSCORE	ORCHESTRA
AFTER OPENING - THE LINE	ORCHESTRA
INTRODUCTION: "I CAN DO THAT"	ORCHESTRA
"I CAN DO THAT"	MIKE
INTRODUCTION: "... AND ..."	ORCHESTRA
"... AND ..."	BOBBY, VAL, JUDY, RICHIE, AND COMPANY
INTRODUCTION: "AT THE BALLET"	ORCHESTRA
"AT THE BALLET"	SHEILA, BEBE, AND MAGGIE
INTRODUCTION: "SING"	ORCHESTRA
SING	KRISTINE, AL AND COMPANY
MONTAGE, PART 1 : "HELLO TWELVE"	MARK, CONNIE AND COMPANY
MONTAGE, PART 2: "NOTHING"	DIANA
MONTAGE, PART 3: "MOTHER"	MAGGIE, DON, JUDY, AND COMPANY
MONTAGE, PART 4	JUDY, GREG, RICHIE AND COMPANY
"DANCE: TEN; LOOKS: THREE"	VAL
SHORT "PAUL" SCENE	ORCHESTRA
"THE MUSIC AND THE MIRROR"	CASSIE
AFTER "MUSIC AND MIRROR"	ORCHESTRA
END OF PAUL'S SCENE	ORCHESTRA
"ONE"	COMPANY
TAP DANCE	COMPANY
ALTERNATIVES	ORCHESTRA
"WHAT I DID FOR LOVE"	DIANA AND COMPANY
AFTER "WHAT I DID FOR LOVE"	PIANO SOLO
BOWS	COMPANY

CAST

	ZACH	WYMAN WHEELER
	LARRY	ANDRAE CARTER
	CASSIE	SOPHIA HILLMAN
	SHEILA	MCKENNA LEWIS
	VAL	ZOE PHILLIPS
	DIANA	ARIEL GLORSKY-SEYL
	JUDY	LEXYE COLLINS
	KRISTINE	SOPHIE PICKETT
	MAGGIE	ANNA LUTTRELL
	BEBE	FRANCIE ROBU
	CONNIE	LIBERTY JOY WARNER
	MIKE	GAVIN TANNER
	RICHIE	JONATHAN BANKS
	DON	CHRISTIAN WATKINS
	PAUL	THOMAS YAMBO-RIOS
	MARK	CADENCE LEBOEUF
	GREG	DALTON DEVOE
	BOBBY	JACK NICHOLS
	AL	DENVER FANKHOUSER
	LOIS	KAETE MOKRYNSKI
	TRICIA	ALYSSA WATSON
	FRANK	JOSHUA DURAN
	ROY	JYAVON HILL
	TOM	LUCAS SHROYER
	VICKI	ALI THANSCHIEDT
	BETTY	KIMMY AGUILAR

	DANCE CAPTIANS	MCKENNA LEWIS, SOPHIE PICKETT
	UNDERSTUDIES	DALTON DEVOE (<i>ZACH</i>), LUCAS SHROYER (<i>LARRY, GREG, BOBBY</i>), KAETE MOKRYNSKI (<i>SHEILA, JUDY</i>), ALYSSA WATSON (<i>VAL, BEBE</i>), KIMMY AGUILAR (<i>DIANA</i>), ALI THANSCHIEDT (<i>KRISTINE, MAGGIE</i>), CADENCE LEBOEUF (<i>MIKE</i>), JYAVON HILL (<i>RICHIE, MARK</i>), JOSHUA DURAN (<i>DON, AL</i>), CHRISTIAN WATKINS (<i>PAUL</i>)

PRODUCTION STAFF

DIRECTOR/CHOREOGRAPHER*	AMY BAKER SCHWIETHALE
MUSIC DIRECTOR	EMILY ORR
REHEARSAL ACCOMPANIST	JULEANN TROUTMAN
PRODUCTION COORDINATOR	MELISSA PENKAVA KOZA
STAGE MANAGER	RENAE RICHMOND
ASSISTANT STAGE MANAGER	JESSE STEPHENSON
ASSISTANT STAGE MANAGER	ACE LA VALLA
SCENIC DESIGNER/TECHNICAL DIRECTOR	ED BAKER
COSTUME DESIGNER & RENTAL COORDINATOR	EMILY FLOWERS
HAIR & MAKEUP DESIGNER	JESSICA HUDSON
ASSISTANT HAIR & MAKEUP DESIGNER	AUGUST SMAGLIK
LIGHTING DESIGNER	BEN JUHNKE
ASSISTANT LIGHTING DESIGNER	ALEC MOORE
SOUND DESIGNER	TREVOR ANDREASEN
PROPS MANAGER	BEN BOLINGER
SCENE SHOP MANAGER	JASON FLANDERS
SCENE SHOP CREW LEAD	DENISE USSERY
SCENE SHOP CREW	TREVOR ANDREASEN, DENISE USSERY, WILL SMITH, MOLLY BAZAR, MADI HENDERSON, LENA CASTRO, JESSE STEPHENSON
COSTUME SHOP MANAGER	MELISSA PENKAVA KOZA
LEAD COSTUME SHOP ASSISTANT	JADE ALMSBERGER
COSTUME SHOP ASSISTANTS	MIA DENNETT, BLAKE GRIMSLEY, EMMA LEWIS, RENAE RICHMOND, ADIA TOLBERT
DECK/SHIFT CREW HEAD	MOLLY BAZAR
DECK/SHIFT CREW	ABBY EPSTEIN, AMANDA SCHMALZRIED
PROPS RUN CREW	AUBREY JOHNSON
WARDROBE SUPERVISOR	JADE ALMSBERGER
WARDROBE RUN CREW	MIA DENNETT, ABIGAIL RICHARDSON, WILL SMITH
COSTUME MAINTENANCE CREW	DENISE USSERY, SEFERINO RAMIREZ
HAIR/MAKEUP SUPERVISOR	EMMA LEWIS
HAIR/MAKEUP RUN CREW	LENA CASTRO
LIGHT BOARD OPERATOR	LEXI TYLER

**Adapted from Michael Bennett's Original Broadway Choreography.*

PRODUCTION STAFF

CONTINUED FROM PREVIOUS PAGE

HEAD ELECTRICIAN	NICK ROUX
FOLLOW SPOT OPERATOR	ABBEY LITTRELL, KATIE BAUMAN
AUDIO ENGINEER/SOUND BOARD OPERATOR	DENISE USSERY
AUDIO ASSISTANT (A2)	ALEXIS DRISCOLL
PERFORMANCE FACILITIES/SOUND DESIGN MENTOR	DAVID MUEHL
STAGE MANAGEMENT MENTOR	ED BAKER
COSTUME/HAIR AND MAKEUP DESIGN MENTOR	SARAH BUSSARD
DRAMATURG	SHELDON MBA
VOICE AND DICTION COACH	JOSEPH URICK
HOUSE MANAGER	ASHLEY GREGA
USHERS	GRACIE EILEEEN, AUDREY JAGODZINSKE, NICK MACIAS, DELANEY DAVIS
POSTER DESIGN	JADE ALMSBERGER

THE BAND

MUSIC DIRECTOR/CONDUCTOR/ KEYBOARD PROGRAMMING	EMILY ORR
KEYBOARDS	EMILY ORR, JULEANN TROUTMAN
REEDS	HANNAH KAVANAUGH, COLE ASHCRAFT, ETHAN GROHE, NATE SCOTT
TRUMPETS	DUSTIN HUXMAN, JOSH BERGMAN, PARKER HOLUSKA
TROMBONES	LUKE GOTER, MARTHA SÁNCHEZ, I'VRÉ COOPER
BASS	CONNOR AMPLEMAN
DRUMS/PERCUSSION	BRENDAN THOMPSON
SUBSTITUTE DRUMS/PERCUSSION	SAM GRIFFITT
REHEARSAL ACCOMPANIST	JULEANN TROUTMAN

BIOGRAPHIES



Kimberly "Kimmy" Aguilar (*Betty*) Previous credits include *My Last Words* (Arlington Convention Center), *Breathe* (Booker T. Washington High School for the Performing and Visual Arts), *Christmas Spectacular* (Gaylord Texan Resort). Kimmy is a freshman in college pursuing a Bachelor of Fine Arts Performing Arts- Dance degree, and is a member of the MADT organization. You can find out more about Kimmy on her socials @kimmy_dancer05



Trevor Andreasen (*Sound Designer/Engineer*) is stoked to be working on Wichita State University's production of *A Chorus Line*. With previous experience as a carpenter on *Cats* (Music Theatre Wichita), Bottom in *A Midsummer Night's Dream* (Empty Space Theatre), and a welder/fabricator for *Pippin* (WSU), Trevor loves pursuing the arts in all forms. He is a second year student on his way to earning a Bachelor of Performing Arts in Theatre studying sound design, directing, and performance. A member of the local 190 IATSE Union, an employee at the WSU Scene Shop, and a local technician/actor, he keeps himself busy with the work he loves. Outside of theatre, he writes music with the myriad of instruments he plays and produces video content for WSU. Trevor believes in creating new art to bringing different perspectives and modes of understanding about people and the world to audiences all over and dedicates his time in the theatre to this endeavor of giving people the best experience possible on their night out while learning something new about the world they live in. You can find out more on his website www.trevorandreasen.com



Jonathan Banks (*Richie*) is pumped to be performing again with Wichita State University! He is a sophomore pursuing a BFA in Performing Arts in Musical Theatre and is a member of the Black Student Union and Madrigals. Recent credits include Music Theatre Wichita: *MTW Holiday Show* (2022), *Ragtime* (2023), The Forum Theatre: *Once on This Island* (2023), and Crown Arts Collaborative: *Dreamgirls* (2023). He has really appreciated the challenging process of this show and hopes you enjoy the product!



Ben Bolinger (*Props Designer*) is excited to be debuting as Props Designer for the first time in *A Chorus Line*. Previously, they had worked as a props artisan for Music Theatre Wichita's 2023 summer season which included: *Rock of Ages*, *Red, White, and Broadway*, *Beauty and the Beast*, *Ragtime*, and *Cats*. For Wichita State University, they also worked as a props artisan for *Stupid F**cking Bird* and *Pippin*. They are happy to end their run at WSU with a wonderful Director, extremely talented stage management team, a fantastic technical team, and superb actors and looks forward to continuing their cross disciplined theatre career.

BIOGRAPHIES



Andrae Carter (Larry) is a second year student pursuing a Bachelor of Fine Arts in Performing Arts-Dance. He grew up attending performing arts schools here in Wichita such as Buckner elementary and Brooks Middle school. Andrae found his love for dance after going through the dance program at Brooks. He would continue to learn from watching videos online and eventually joining his high school dance team at Heights high school. He was even able to serve as dance captain for his junior and senior year. During his first year at Wichita State, he had the opportunity to work closely with Charlotte Boye-Christensen on a dance film entitled *The Wanderer*. He also performed the solo for *Dear Me* choreographed by Cheyla Clawson, at the American College Dance Association (ACDA). This year Andrae will be performing in the *Move on Litwin: Dance up Close* (Oct. 2023) and the *Wichita Contemporary Dance Theatre* (April 2024). He hopes to continue to learn and grow throughout his time at Wichita State. Andrae is so excited to be making his Wichita State Musical Theater debut with *A Chorus Line*.



Lexye Collins (Judy) is so excited to make her Wichita State music theatre debut! Some of her most recent credits include "Cat" in *Seussical* (MTW-MTYP), "Alison" in *Beehive* (The Forum), "SpongeBob" in *SpongeBob SquarePants* (MTW-MTYP), "Ensemble" in *Beauty and the Beast* (MTW). Lexye is a freshman pursuing her BFA in Performing Arts in Musical Theatre and is a member of Wichita State's WuChoir. Lexye's mission is "To inspire and entertain others while doing what she loves."
Insta: @lexyecollins



Dalton DeVoe (He/They) (*Greg, Zach* understudy) is excited to be returning to the Wilner Stage in *A Chorus Line*! Dalton is a senior at Wichita State University currently pursuing a Bachelor's of Fine Arts in Performing Arts in Musical Theatre. Originally from Kansas City, Dalton has been involved in numerous productions both there and in Wichita. Previous credits include *La Cage Aux Folles* (Roxy's Downtown), *The Rocky Horror Show* (Crown Arts Collaborative), and *Heathers* (Roxy's Downtown). Apart from theatre, he plays guitar, and explores songwriting and creating music. Dalton strives to use theatre and music as ways to inspire and impassion others the same way he was, and use art to share powerful messages to make the world a better place. You can follow his artistic journey on Instagram @dalton.devoe. Thank you for supporting live theatre and the WSU College of Fine Arts, and enjoy the show!



Joshua Duran (Frank) is making his debut on the Wichita State University stage. His most recent credits include his performance as a farmer in *The Music Man* (Fort Hays State University), and as SpongeBob in *The SpongeBob Musical* (Family Community Theatre). Joshua is a first-year student pursuing a Bachelor of Fine Arts in Performing Arts with a concentration in Music Theatre. He is a member of the Wichita State Music Theatre Company (WSMTC). Josh's mission is to leave a piece of his heart and soul with every person he performs for.

BIOGRAPHIES



Denver Fankhouser (Al) is very excited to be returning to the stage at Wichita State University. Previously, he appeared as Adam/Felicia in *Priscilla Queen of the Desert* (Roxy's Downtown), Chantel in *La Cage Aux Folles* (Roxys Downtown), and Lurch in *Addams Family* (Crown Uptown). Denver is currently a senior year at Wichita State University pursuing a Bachelor of Fine Arts in Performing Arts in Musical Theatre with a minor in dance. He wants to give a huge thank you to Wichita State University for the opportunity and a big thank you to the cast and crew for an amazing experience.



Emily Flowers (She/Her) (Costume Designer/Rental Coordinator) is so excited to be working on Wichita State University's production of *A Chorus Line*. This is her debut costume design for WSU. Emily has previously worked as on the costume crew for both *Stupid F**king Bird* and *Pippin*, both here at WSU. She is a sophomore pursuing a degree in Design/Technical Theater with an emphasis in Costuming and Props. Emily's mission is "to inspire others with her work to create and to not be afraid of bringing new ideas to the table." You can find more at her website: <https://emilyflowers04.wixsite.com/emily-flowers-portfo>



Jyavon Hill (Roy; understudy for Mark/Richie) is making their Wichita State University debut. Previously, he appeared in *Little Women*, *Fables*, and *Calamity Town* (Friends University). Jyavon is a second year transfer pursuing a Bachelor of Fine Arts in Performing Arts in Musical Theatre and is a member of SAC Digital content creation club. Jyavon's mission as an artist is to become a performer and make music people can relate to because he feels there's a lot of representation out there but no one truly gets how those people might feel.



Sophia Hillman (Cassie) is honored to be finishing out her time at Wichita State University with this life-changing role and show. She is currently enrolled in her final semester at WSU studying musical theatre and dance. Sophia has been seen around town in *Ragtime*, *Beauty and the Beast*, *Rock of Ages* (Music Theatre Wichita); *The Color Purple*, *Priscilla Queen of the Desert* (Roxy's Downtown); *Dreamgirls*, *Rocky Horror*, *The Wedding Singer* (Crown Arts Collaborative). She would like to thank her family for their endless love and support. To keep up with Sophia, follow her Instagram: @sophiahillman

BIOGRAPHIES



Jessica Hudson (*Hair & Makeup Designer*) Jessica is beyond excited to be working on her fourth designing project here at Wichita State University. This summer, she was the Hair & Makeup Intern at Music Theatre Wichita. Other design works include *A Midsummer Night's Dream*, *Pippin*, and *Stupid F##king Bird*. Jessica is a junior pursuing a BA in Performing Arts in Theatre along with a minor in Signed Languages and a directing certificate. Jessica also works on campus within the SPA Office. Next semester, you can see her onstage as Mrs. Bumbrake in *Peter and the Starcatcher*. She would like to thank all her mentors here at WSU and MTW for all the knowledge they have bestowed on her as well as her family for being an integral part of all her designs. Instagram: @ohsnapitshudson



Liberty Joy (*Connie*) is so excited to be returning to Wilner Auditorium, this time making her Wichita State University Music Theatre debut. She previously appeared in *Move on Litwin: Dance Up Close* (WSU), *Wichita Contemporary Dance Theatre Spring Concert 2023* (WSU), and *A Midsummer Night's Dream* (Ballet Wichita). Liberty is currently a senior pursuing a Bachelor of Performing Arts in Dance with minors in Music Theatre, Sociology, and a Dance Commercial certificate. This is her third year serving as the Vice President for Mid-American Dance Theatre organization. Liberty's mission as a performing artist and creator is "to use dance that intrigues the audience, performers, and herself in a way that connects us to one another. She thrives to tell stories through movements that depict personal experiences and honest emotions. She believes that as humans we must have a sense of community and connection with each other and ourselves".



Ace La Valla (*Assistant Stage Manager*) is thrilled to be working on Wichita State University theatre's production of *A Chorus Line*. Previous credits include stage management in *Descendents the Musical* (Pittsburg Community Theatre), stage management in *Mean Girls Jr.* (Triple Threat Threeatrics), and stage management in *Big Fish the Musical* (Kansas State Thespian Festival). Ace is a freshman pursuing a Bachelor in Performing Arts in Design and Technical Theatre.



Cadence LeBoeuf (*Mark*) is making their Wichita State University theatre debut. Their previous credits include Hanna in *La Cage Aux Folles* (Roxys Downtown), Frank in *Demise At The Department Store* (Prairie Pines Playhouse), and Stokes in *Carrie* (Roxys Downtown). Cadence is a senior in college pursuing a Bachelor in Performing Arts in Musical Theatre. They would like to give a special thanks to their partner Dex for their never-ending support and love.

BIOGRAPHIES



Mckenna Lewis (*Sheila*) is thrilled to be in her final production at Wichita State University. She is a senior pursuing a Bachelor in Performing Arts in Musical Theatre and a minor in Dance. Previous credits include *Footloose* (Shawnee Mission Theatre in the Park), *Pippin* (WSU), and *A Crown Holiday Spectacular* (Crown Arts Collaborative). She is honored to be learning and growing as an artist through such an iconic show.



Anna Luttrell (*Maggie*) is excited to be making her debut as a freshman at Wichita State University. Anna is a double major in musical theater and vocal performance and hopes to pursue a minor in dance. Previous credits include *The Music Man* (Cptheater), Sarah Brown in *Guys and Dolls* (Classical School of Wichita), and Fairy Godmother in *Cinderella* (Cptheater). As an artist, Anna hopes to bring joy to all people through performances and storytelling. You can contact Anna at akluttrell@shockers.wichita.edu.



Kaete Mokrynski (*Lois*, understudy for *Sheila* and *Judy*) Kaete is extremely excited to make her School of Performing Arts debut in *A Chorus Line*. She was previously assistant stage manager for *The Fox Sisters* in the 2022-2023 season at Wichita State University. Her previous performance credits include Adelaide in *Guys and Dolls*, Peggy Sawyer in *42nd Street*, #2 in *The Wolves*, and Mary Sunshine in *Chicago*. She has had the greatest and most life-changing educational experience being an understudy in the show, and would like to wish the entire cast and crew a fantastic run as well as thank them for all the hard work.



Jack Nichols (*Bobby*) is ecstatic to be in *A Chorus Line*. You may have seen him last year in *The Fox Sisters* (Wichita State University), *Acis & Galatea* (WSU Opera), or *The Barber of Seville* (Wichita Grand Opera). Jack is currently a sophomore pursuing a Bachelor of Music in Vocal Performance, where he studies under Michael Sylvester, with minors in Dance and Musical Theater.



Zoe Phillips (*Val*) is excited to be a part of Wichita State University's production of *A Chorus Line*. Previous credits include Lysander in *A Midsummer Night's Dream* (WSU), an Ensemble Swing in *Pippin* (WSU), and Tina Denmark in *Ruthless!* (Catawba College). Zoe is a junior pursuing a Bachelor in Performing Arts in Musical Theatre. She is also the Marketing Director of Wichita State Music Theatre Company. You can find her on instagram @realzoephillips.

BIOGRAPHIES



Sophie Pickett (*Kristine*) is so excited to be a part of *A Chorus Line*! Sophie is a junior at Wichita State University, credits include, *Vanities*, *Pippin*, and *The 25th Annual Putnam County Spelling Bee* at WSU. *The Wedding Singer* and *The Crown Holiday Spectacular* at local theater The Crown Arts Collaborative. Sophie is also on the Wichita State Dance Team! Follow her on Instagram @sophiagpickett



Renae Richmond (*Stage Manager*) is excited to have their Wilner management debut. Their previous credits include Stage Manager of *Midsummer* (Empty Space Theater) and Costume Build Crew for *Pippin* and *Stupid F##king Bird* (WSU). They also worked as a Hair & Makeup Artisan at MTW this summer (*Rock of Ages*, *Beauty & the Beast*, *Ragtime*, *Cats*). Catch them next semester as Black Stache in *Peter and the Starcatcher*. They are a senior theatre performance major with a minor in musical theater and a certificate in stage management. They are also the Production Manager of Empty Space Theater. Renae's mission is to help create a safe space for other artists' voices to be heard. You can find out more about them on instagram @renaerichmond.official



Francie Robu (*Bebe*) is thrilled to be performing again at Wichita State University where she was recently seen in *Pippin* and *The Fox Sisters*. She is a junior this year and is pursuing her Bachelor of Performing Arts in Musical Theatre and a Bachelor of Arts in English Lit. She would like to thank the cast and crews for all the hard work they have put into this show.



Lucas Shroyer is studying his second year at Wichita State University majoring in music theater and dance. With his time at WSU, he has been in productions *The Fox Sisters*, *Pippin*, *Wichita State Contemporary Dance Theatre Concert*, *MT First Year Showcase*, and *Move On Litwin*. Lucas will be performing in the spring dance concert as well as performing in *White Christmas* with Crown Arts Collaborative this December.

BIOGRAPHIES



August Smaglik (*Assistant Hair and Makeup Designer*) is making their hair and makeup debut and is so excited to have the opportunity to expand their skills. They have primarily done props work through their professional and educational career. They have previously been a Prop Artisan for Music Theatre Wichita's 2022 and 2023 seasons, including the shows *Rock of Ages*, *Red White and Broadway*, *Beauty and the Beast*, *Ragtime*, *Cats*, *Jersey Boys*, *42nd Street*, *Kinky Boots*, *The Wizard of Oz*, and *The Drowsy Chaperone*. They have also been the Props Designer for the *The Rocky Horror Show* (Crown Arts Collaborative), *Pippin* (Wichita State University Theatre), and *Stupid F##king Bird* (WSU). They have previously been the Costume Designer for *Happy Wright* (WSU) and Assistant Costume Designer and Props Designer for *The Scarlet Letter* (WSU Opera). August is a senior pursuing a Bachelor of Performing Arts in Design and Technical theatre with an emphasis on props management and construction. Their mission is to become a jack of all trades, but a master of none. You can find out more about August's work on their website at <https://augustsmaglik.weebly.com/>



Jesse Stephenson (*Assistant Stage Manager*) is thrilled to be working on Wichita State University theatre's production of *A Chorus Line*. He has also worked as the assistant stage manager on WSU's *Pippin* last spring. Jesse is a sophomore pursuing a Bachelor of Performing Arts in design and technical theatre.



Gavin Tanner (*Mike*) is thrilled to be a part of *A Chorus Line*! His previous credits include *Ride the Cyclone* (Roxy's), *Pippin* (Wichita State University), and *Carrie* (Roxy's). Gavin is a senior pursuing his Bachelor of Performing Arts in Musical Theatre, and he is the president of the Wichita Musical Theatre Company (WSMTC). Gavin would like to thank his family, friends, God, and Peyton for supporting him through this process. His mission as an artist is to educate, inspire, and encourage.



Ali Thanscheidt (*Vicki/Offstage Singer*) is excited to be making her Wichita State musical theatre debut! She previously appeared in *The Sound of Music: Youth Edition* (NW Optimist Performing Arts Center), *Bye Bye Birdie* (Bethany High School), and *Cinderella: Enchanted Edition* (Upstage Theatre). Ali is a sophomore pursuing a Bachelor in Performing Arts in Musical Theatre, a Bachelor of Music Education in Vocal Music Education, and a minor in dance. She is a member of Wichita State Musical Theatre Company (WSMTC), the National Association for Music Education (NAfME), and American Choral Directors Association (ACDA).

BIOGRAPHIES



Christian Watkins (*Don, understudy for Paul*) is incredibly excited to be able to perform in his last main stage show here at Wichita State University. Previous credits include *Kiss of the Spider Woman* (Roxy's Downtown), *Pippin* (WSU), and *Pajama Game* (Butler). Christian is a senior pursuing his Bachelor of Performing Arts in Musical Theater with a minor in dance. Christian's mission is to "tell beautiful stories and to bring entertainment to audiences while inspiring others along the way".



Alyssa Watson (*Tricia, understudy for Val & Bebe*) is a sophomore at Wichita State University, and this is her third production with the program. Some of her favorite shows she has been in include *The Drowsy Chaperone* (Shawnee Mission West High School), *The Fox Sisters* (WSU), and *A Year With Frog and Toad* (The Culture House). Alyssa is pursuing a Bachelor of Performing Arts with a concentration in Music Theatre, and is the Treasurer for WSMTC, the student lead musical theatre organization at WSU.



Wyman Wheeler (*Zach*) is thrilled to be a part of *A Chorus Line* as Zach! Wyman has been in many shows in the Wichita area, including *Ride the Cyclone* (Roxy's Downtown) as Mischa Bachinski. Other credits include Sky Masterson in *Guys And Dolls* (Cowley Summer Theatre) and Ensemble in *Pippin* (understudy for Pippin) (Wichita State) Wyman is a senior pursuing a Bachelor of Performing Arts in musical theater and a certificate in voice acting at Wichita State University. Wyman's mission is to inspire change through the power of storytelling. Keep up with Wyman on his instagram: @wyman311



Thomas Yambo-Rios (*Paul*) is excited to be back on the Wilner Stage for *A Chorus Line*! Previous credits include *La Cage Aux Folles* (Roxy's Downtown), *Kiss of the Spiderwoman* (Roxy's Downtown), & *Pippin* (Wichita State University). Thomas is a senior pursuing a Bachelor of Performing Arts with a concentration in Musical Theatre and is a member of the Wichita State Musical Theatre Company. Thomas would like to thank his family for their endless love and support. You can find more about Thomas on Instagram @_txmmy.yxmbo_

COMING SOON

SENIOR
CAPSTONE
CELEBRATION
DEC. 2-3, 2023



Wichita Children's
Dance Festival



WICHITA
CHILDREN'S DANCE
FESTIVAL
JAN. 28, 2024



**ALFRED S. & ESTHER U PERRY ENDOWED
MEMORIAL SCHOLARSHIP IN FINE ARTS**

Mckenna Lewis
Alyssa Watson
Bailey Buchanan
Leopold Porcaro
Renae Richmond

AUDREY NEEDLES SCHOLARSHIP FUND

Ella Kempker

**CHARLIE WHITWORTH THEATER
SCHOLARSHIP**

Jade Almsberger

**DELORES AND CHARLES CRUM MAINSTAGE
THEATRE SCHOLARSHIP**

Jade Almsberger
Morgan Holcomb
Trevor Andreasen
Dylan Bray
Ashley Grega
Matthew Gwinner
Leopold Porcaro
Joel Smith
Adia Tolbert
Denise Ussery
Scott Cockrill
Mark Barlow
Seferino Ramirez

**PAMELA J. POSTIER PERFORMING ARTS
SCHOLARSHIP**

Hannah Chandler

RANDAL M. JONES ENDOWED SCHOLARSHIP

Piper Patterson

**DR. FORREST E. RICHERT MEMORIAL
ENDOWED SCHOLARSHIP**

Alexandria Thanschiedt

ELEANOR DOTY CLAIR SCHOLARSHIP

Matthew Gwinner

MARY JANE TEALL THEATRE SCHOLARSHIP

Morgan Holcomb

**GEORGE D. WILNER ACHIEVEMENT
AWARD (SCHOLARSHIP)**

Lynnaya McClure

**JANICE CHAMBERS RAMSEY
SCHOLARSHIP IN MUSICAL THEATRE**

Joshua Duran
Sophia Pickett
Wyman Wheeler

**JON AND KELLY CALLEN MUSICAL
THEATRE ENDOWED SCHOLARSHIP**

Mckenna Lewis

**JOYCE CAVAROZZI ENDOWED
SCHOLARSHIP IN THEATRE**

August Smaglik

**JULIA WEAVER MASTERS THEATRE
SCHOLARSHIP**

Adia Tolbert

**VERYLE HERIFORD ENDOWED
SCHOLARSHIP IN FINE ARTS**

Sophia Hillman

**JUNE M. LAIR ENDOWMENT FOR THE
ARTS**

August Smaglik

**STEV OVERSTREET DEAN'S FUND IN FINE
ARTS**

Dalton Devoe

TURTLE SCHOLARSHIP FOR DANCE

Kaete Mokrynski
Cobie Reeves

**VAN & VIRGINIA LEE FISER END
MEM/OPERA/MUSIC THEATRE**

Dalton Devoe

**KIM STEPHENS MEMORIAL ENDOWMENT
FOR EXCELLENCE IN DANCE**

Hannah Chandler

**MARTHA M FLEMING DANCE
SCHOLARSHIP**

Lille Nightingale

**LINDA STARKEY MUSICAL THEATRE
SCHOLARSHIP**

Dalton Devoe
Jyavon Hill
Mckenna Lewis
Gavin Tanner

LULU BONAVIA DANCE SCHOLARSHIP

Liberty Warner
Kimberly Aguilar
Olivia Lockwood

**MICKEY & PETE ARMSTRONG PERFORMING
ARTS SCHOLARSHIP**

Jonathan Banks
Denver Fankhouser

PATRONS OF MUSIC THEATRE

Jyavon Hill
Frances Robu
Christian Watkins

PERFORMING ARTS ANGELS (PAA)

Lena Castro
Lexye Collins
Nicholas Macias
Alexis Tyler

PAA MARKETING SCHOLARSHIPS

Dylan Bray
Blake Grimsely
Trevor Andreasen
Gavin Tanner

**SCHAEFER , JOHNSON, COX, FREY &
ASSOCIATES P.A ENDOWED SCHOLARSHIP**

Joshua Duran

**MARCUS FAMILY ENDOWED SCHOLARSHIP
FOR EXCELLENCE IN THE ARTS**

Olivia Lockwood

MARJORIE LOIS GRAHAM SCHOLARSHIP

Bailey Buchanan
Dalton Devoe
Gavin Tanner
Emily Redfield

MILLER TRUST

Renae Richmond
Rueben Scheck
August Smaglik
Sophia Hillman
Mckenna Lewis
Gavin Tanner
Christian Watkins
Ella Kempker
Lynnaya McClure
Emily Redfield
Bailey Buchanan
Hannah Chandler
Alexandria Nickel
Lille Nightingale
Piper Patterson
Cobie Reeves
Alaycea Kremeier

**Fred J Valentine Fine Arts
Scholarship**

Joshua Duran
Jyavon Hill
Sophia Pickett
Gracie Vopat
Wyman Wheeler





MAY 22-26



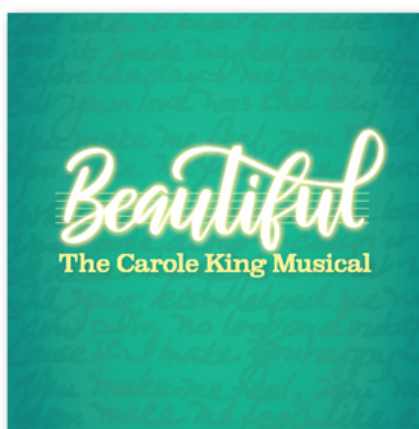
JUNE 12-16



JULY 5-7 & 10-14



JULY 31-AUG 4



AUG 21-25

SEASON
★ **TICKET** ★
PACKAGES
START AT JUST
\$144



The Kennedy Center

*The Kennedy Center American College Theater Festival, part of the Rubenstein Arts Access Program, is generously funded by **David M. Rubenstein**.*

Special thanks to The Harold and Mimi Steinberg Charitable Trust for supporting the John F. Kennedy Center for the Performing Arts' Kennedy Center American College Theater Festival.

Additional support is provided by The Honorable Stuart Bernstein and Wilma E. Bernstein; and the Dr. Gerald and Paula McNichols Foundation.

Kennedy Center education and related artistic programming is made possible through the generosity of the National Committee for the Performing Arts.

This production is entered in the Kennedy Center American College Theater Festival (KCACTF). The aims of this national theater education program are to identify and promote quality in college-level theater production. To this end, each production entered is eligible for a response by a regional KCACTF representative, and selected students and faculty are invited to participate in KCACTF programs involving scholarships, internships, grants and awards for actors, directors, dramaturgs, playwrights, designers, stage managers and critics at both the regional and national levels.

Productions entered on the Participating level are eligible for invitation to the KCACTF regional festival and may also be considered for national awards recognizing outstanding achievement in production, design, direction and performance.

Last year more than 1,500 productions were entered in the KCACTF involving more than 200,000 students nationwide. By entering this production, our theater department is sharing in the KCACTF goals to recognize, reward, and celebrate the exemplary work produced in college and university theaters across the nation.



The Performing Arts Angels exists to provide educational and training opportunities for talented dance, musical theatre, and theatre (performance and design/tech) students in the School of Performing Arts - opportunities not funded through the state or university.

The School of Performing Arts faculty, staff, and students recognize and deeply appreciate all your financial support. It allows us to fulfill our mission to educate and train students for a career in the arts and entertainment industry. To find out how you can become a Performing Arts Angel and support the School of Performing Arts students, please contact our office at 316-978-3078 or give online at www.wichita.edu/give.

We apologize in advance for any omission or errors in this list. Please bring corrections to the attention of Matt Fisher at matthew.fisher@wichita.edu or 316-978-3078. Listings may shift from one program to another depending on the timing and receipt of gifts.

Giving for September 2022 - October 2023

**DECEASED*

PRODUCER (\$1,000 +)

Marty and Donna Perline
Michael Bayouth
Stev Overstreet
Sally Ottaway
Ed & Danette* Baker
Gary Wood
Dennis & Genell Arnold
Anita Jones
Christine Kubik
Julie and Stan Longhofer
Mike & Susan Pompeo
Keith & Georgia Stevens
Marlene Hayes
Paul & Michelle Witte
Richard & Debra Campbell
Ltc.(R) Lionel & Tammy Alford
Pete & Renea Goforth

DIRECTOR (\$500-\$999)

Jerry Martin
Jane McHugh
Dee & Linda Starkey
Lance & Della Lickteig
Louise Brinegar & Gene Carr
Thom & Adrienne Rosenberg
Shoko Severt
John Fishpaw & Kimberly Krohn
Marie Bukowski
Pam Postier
Raymond & Diane Gans

CHOREOGRAPHER (\$200-\$499)

Wes Henderson
Kelly & Tanja Harrison
Harriet Hickman
Richard Muma & Rick Case
Walter & Kaye Myers
Cheyla Clawson
Rodney Miller & Pina Mozzani

Performing Arts Angels

CONTINUED FROM PREVIOUS PAGE

CHOREOGRAPHER (\$200-\$499)

David Stone & Marni Vliet Stone
Bill & Pam Lappin
Wayne Bryan
Groves Retail Liquor
Michael Klaassen & Gerri Colgan
Donna Ard
Steven & Kitchel Woods
Deborah Gafvert & Kenneth Gibbs
Nancy Anderson

PERFORMER (\$25-\$99)

Ted & Debra Kimble
Rob Simon & Denise Jackson-Simon
Brian & Sarah Walden
Patrick & Sandy Hannon
Elizabeth Wine
Nadia Karim

DESIGNER (\$100-\$199)

Stephen Sowards & Jane Wilcox
Dean Cleverdon & Nancy Nyberg
Ken & Marilyn Pauly
Harold & Evelyn Gregg
Alan & Sharon Fearey
Hew & Judy Goodpasture
Anne Welsbacher
Deb Brinegar & John Diel
Lou & Mallory Medvene
Jeffry Koch & Lesley Riddell-Koch
Ann Marie Siegwarth
Nathan Miller
Matt Fisher
Kathleen Moore



*Thank you
Angels!*



SPA
SCHOOL of
PERFORMING ARTS

Performing Arts Angels

Everyone Can Be An Angel

Visit wichita.edu/give to become a member online with a credit card, or complete the form below, enclose a check (payable to the WSU Foundation/Performing Arts Angels) and send by mail to:
1845 Fairmount, Campus Box 2, Wichita, KS 67260.

- | | | |
|--------------------------|---------------|-----------|
| <input type="checkbox"/> | Producer | \$1,000+ |
| <input type="checkbox"/> | Director | \$500-499 |
| <input type="checkbox"/> | Choreographer | \$200-499 |
| <input type="checkbox"/> | Designer | \$100-199 |
| <input type="checkbox"/> | Performer | \$25-99 |

Contact Name: _____

Phone #: _____ Email: _____

Address: _____

City/State: _____ Zip Code: _____

Wichita.edu/give