

DANCE PROGRAM

MISSION STATEMENT

Students pursuing a B.F.A. and B.A. in Performing Arts – Dance will develop knowledge, techniques and collaborative skills conducive to a lifetime of independent learning and creativity. Through classroom study and production/performance experiences, students will be prepared to work in the academic or professional arena, study further in graduate programs, and/or pursue careers in teaching, business and fitness. Faculty and students will engage in the discovery and development of new information to enhance knowledge through original, creative, experimental, and scholarly work. The program enriches the campus community, the Greater Wichita area, and the surrounding thirteen counties through numerous performances and community interaction each year.

OBJECTIVES

The primary goal of the dance program is to prepare dance performers and choreographers for a professional career with the emphasis on diversity of training, performance styles, choreography and interdisciplinary projects. This is achieved by maintaining a consistent influx of guest artist choreography and teaching residencies and by promoting professional performance sensibilities through Wichita Contemporary Dance Theatre. The dance program faculty engages in ongoing faculty development, creative work, and scholarship that support student achievement. The dance program also advocates for and provides a shaping influence in the cultural enrichment of Wichita and the state of Kansas.

INTRODUCTION

The Wichita State University School of Performing Arts Dance Program offers a unique approach to pre-professional training culminating in a B.F.A. or a B.A. in Performing Arts – Dance. The B.F.A. prepares dancers for the diverse demands of professional careers with a degree program emphasizing modern, ballet, jazz, and choreography. Other dance curriculum includes kinesiology, dance history, teaching methods and mime theatre. The B.A. offers dancers the option to enhance dance studies with varied complimentary fields of study. Wichita State is an accredited institutional member of the National Association of Schools of Dance for the B.F.A. in Performing Arts - Dance.

Performances during the year include two Main stage dance concerts, an undergraduate choreography concert,

senior concerts, informal showings, lecture-demonstrations, ACDA and involvement with Opera and Musical Theatre productions. Students also have opportunities to perform with companies and arts organizations such as Ballet Wichita. The dance program organizes tours for the Wichita Contemporary Dance Theatre (WCDT), the program's resident touring company, and for the Alithea Mime Theatre, a professional company in residence at Wichita State University. In addition, the program annually sponsors performances and master classes by professional touring companies such as Complexions Contemporary Ballet, Ririe-Woodbury Dance Company, Doug Varone & Dancers, Hubbard Street Dance Company, Parsons Dance Company, Ballet Folklorico, Marcel Marceau and Paco Peña Flamenco Company.

This balance between professional faculty and nationally recognized guest artists stresses strong technical training, regular performances, choreographic opportunities, and course work in an effort to develop both an educated and artistic performer. The Dance Program's faculty trains students in the craft of dance as a performing art in order to establish careers as performers, choreographers, and educators.

WHAT IS EXPECTED OF THE DANCE MAJOR

Both B.F.A. and B.A. student/dancers have an obligation to participate fully in all aspects of the Dance program. Regular class attendance is mandatory and important to one's development as an individual artist and performer. B.F.A. Dance majors are required to participate in **Wichita Contemporary Dance Theatre** each year of study and encouraged to participate in Mid-America Dance Theatre. Majors are encouraged to perform in the choreography projects of fellow students. B.A. majors are encouraged to integrate their complimentary fields of study with the dance component in consultation with their advisors.

STANDARDS FOR THE DANCE MAJOR PROGRAM

Depending on academic and program standing, Dance majors must enroll or participate each semester in a dance technique class. Once any class is in session, no one is allowed to enter or leave without the instructor's permission. Promptness to class, rehearsals, and crew calls are mandatory. All students are expected to wear proper attire for all classes as specified by the instructor. No rehearsal has priority over any class. Choreographers will set all Dance rehearsals at hours that will not conflict with University scheduled classes. Usage of dance studios and department equipment is a

privilege and must be cleared through the office of the Director of Dance.

Only the Director of the School of Performing Arts and the Director of Dance with the dance faculty approval may grant leave of absence for professional engagements. **Students must secure such permission before making any outside contractual or verbal engagement. Absences may not conflict with department rehearsals, concerts, and other such functions of the school.** The School of Performing Arts does not intend to discourage professional opportunities; this policy simply ensures that the dancer's primary focus of energy is his/her Wichita State University training. The Director of Dance should be informed when any extended leave of absence is anticipated.

Dance Program Participation Policy

The WSU Dance Program requires an 80% participation rate for all studio classes. Students must dance in 24 out of the 30 meetings in classes that meet twice a week, and 36 out of the 45 meetings in classes that meet three times a week to get credit for the course. Sitting and watching a class does not count as participation. Participating for less than the full class time does not count as participation. Students who do not meet the participation requirement for any reason will receive a failing grade (unless they have withdrawn from the course) and will need to repeat the course.

Student Rehearsal Requirements/Department Policies for Class Attendance

Students are **REQUIRED** to attend at least 1 technique class the day of rehearsal. It is unsafe to rehearse without the body being aligned prior to rehearsal. A student is considered excused from class and rehearsal for medical reasons.

Absences from rehearsal, excused or not excused, may result in a dancer's replacement in the dance work or changing of status in casting. The choreographer and/or director of dance will determine the amount of absences.

Exceptions may be considered for school-required activities, auditions, graduating seniors, summer study programs or family/health emergencies.

CURRICULUM OF THE PROGRAM

The Bachelor of Fine Arts (B.F.A.) in Performing Arts - Dance is designed to provide the student with intensive professional study of concert dance. This is accomplished through studio and practical experience in technique, performance, and choreography. The Bachelor Arts (B.A.) in Performing Arts - Dance is designed to emphasize dance technique, related studies, and a complimentary course of study chosen from a

wide variety of fields in consultation with the student's academic advisor

Dance B.F.A. majors must complete 48 hours in modern, ballet, and jazz techniques. All majors complete two semesters of level four technique in one discipline. Technique classes are repeatable for credit. There are an additional 39 hours of course requirements for dance including: School of Performing Arts Core Classes, 3 sections of Choreography; 2 sections of Dance History, Dance Kinesiology, Teaching Methods and Dance Performance. In addition, all B.F.A. dance majors are required to perform.

Dance B.A. majors must complete 36 hours of dance technique in modern, ballet and jazz (12 hours each technique) and a minimum graduation proficiency of level 2 in all techniques. Technique classes are repeatable for credit. Dance B.A. students are encouraged to take concurrent technique classes in a least two disciplines each semester.

All Dance B.A. majors may audition to perform in Wichita Contemporary Dance Theatre and dance program productions each semester.

Dance Curriculum Flowchart, Check Sheet, Program of Study and Course Rotation Overview can be found at the end of the Dance Program section of this Guidebook.

SCHOLARSHIPS

The School of Performing Arts awards dance scholarships to students who qualify by audition. Auditions encompass demonstrated proficiencies in modern, ballet, and jazz techniques. Dance scholarship recipients must be Dance majors, must be full-time students registered for a minimum of 12 credit hours, including a minimum of 6 credit hours of Dance courses each semester, must maintain a university GPA of 2.75 and a Program GPA of 3.0 and must qualify to participate in **Wichita Contemporary Dance Theatre** and participate in Mid-America Dance Theatre. Dance scholarships are as follows:

Kim Stephens Scholarship
Martha Fleming Scholarship
Selma Miller Trust
Buck Scholarship
Lulu Bonavia Scholarship (out of state)
Turtle Scholarship
Graham Scholarship

Specific scholarship criteria can be obtained from the Director of Dance and/or the School of Performing Arts office. Additional scholarships are available through the

School of Performing Arts (*see Scholarships in the School of Performing Arts section*).

ASSESSMENTS

The Dance Program regularly assesses student performance both in and out of class. In addition to regular assessments through course work, the following will be used to assess dance majors in their progress.

B.F.A. Dance Review/Juries

At the end of each year, B.F.A. Dance majors participate in juries (formal reviews) with members of the full and part-time dance technique faculty. Areas to be evaluated include technique skills, dance performance, attendance and physical facility. The annual juries are movement based. Dance B.F.A. majors will undergo a sophomore review with their advisor and consultation of the entire faculty to evaluate their progress within the performance emphasis to determine future standing with the B.F.A. performance degree. If during the sophomore review, it is determined the student should consider another emphasis, the faculty will assist in transitioning the student to the B.A. in Performing Arts – Dance or another major within the college or university.

See Criteria for Assessment and a sample of the Jury Feedback Sheet at the end of the Dance Program section of this Guidebook.

Senior Project

B.F.A. Performing Arts/ Dance –

As part of the required Senior Project (DANC 580) capstone course, all B.F.A. majors present works on a senior dance concert to include choreography and performances by the student, determined in consultation with their major advisor and the Director of Dance. Students are also required to submit a paper, which includes a written analysis and description of the theoretical framework and compositional development, an analysis of the production, and conclusions. These materials are submitted to the major advisor for approval. Following approval by the major advisor, students are scheduled for an oral defense of their work before the dance major faculty.

BA Performing Arts Dance –

As part of the required Senior Project (DANC 580) capstone course, all B.A. majors present a final project, determined in consultation with their major advisor and the director of dance. Students are also required to submit a paper, which includes a written analysis and description of the theoretical framework and development, an analysis of the final project, and conclusions. These materials are submitted to the major advisor for approval. Following approval by the major

advisor, students are scheduled for an oral defense of their work before the dance major faculty.

Detailed information regarding Senior Project is covered in the syllabus for DANC 580 at the end of the Dance Program section of this Guidebook.

PERFORMANCE OPPORTUNITIES

One of the highlights of the School of Performing Arts Dance Program is the resident performing company, Wichita Contemporary Dance Theatre. The company's season includes the fall Kansas Dance Festival (hosted by the Dance Program), an annual Wichita Contemporary Dance Theatre Concert, participation in the American College Dance Festival, attendance at regional dance conferences and touring to present concerts throughout the region, the nation, and the world. The Dance Program and MADT offer lecture demonstrations, master classes, and informal concerts in the community throughout the year.

DANCE FACILITIES

WSU Dance studios and offices are housed in the Heskett Center, a \$10-million multi-purpose complex that includes two large studios, which are fully equipped with mirrors, sound system, concert stage and pianos. The 144A studio is the home of the Harry Litwin Studio Theatre. In this theatre, the senior concerts, choreography class concerts, and informal concerts are held.

Additional facilities include a third large studio, faculty offices, and costume storage room in the Duerksen Fine Arts Center. Dance Mainstage performances are held in Miller Concert Hall, which is also located in Duerksen Fine Arts Center. Use of the dance facilities is requested and scheduled through the Dance faculty and Administrative Specialist for the School of Performing Arts.

Heskett Center Policies

All students must show their WSU ID at the Heskett front desk to be admitted to any dance class or rehearsal. If you do not have your ID, you will get an absence! No exceptions.

Heskett Center Policies (cont.)

No food or drink is allowed in Heskett dance studios except in authorized areas. As a privilege to dance majors and minors, the Dance Lounge (inside the Dance studios) is one such authorized area. However, it is imperative that any food that is brought into the Dance Lounge be completely concealed (inside your bag) while transporting from the Heskett Lobby to the Dance

Lounge. Failure to be discreet in the transport of food could cause the loss of this privilege

No street shoes allowed on the studio floors.

No bare feet outside the dance studios.

Please keep all valuables with you at all times or locked in the locker room.

DANCE ORGANIZATIONS

WCDT

Wichita Contemporary Dance Theatre Ensemble, the faculty-directed dance company of WSU School of Performing Arts.

MADT

Mid-America Dance Theatre, student-directed dance organization of WSU School of Performing Arts.

KDF

Kansas Dance Festival, an annual festival featuring an array of master classes that culminates in shared performances by invited university and professional companies throughout Kansas.

ACDA

American College Dance Association provides regional and national visibility for dance works produced in colleges and universities for faculty and student choreographers and performers in these programs. It provides an opportunity for dance faculty and students to have their work adjudicated and critiqued by established professional dancers and choreographers. The association provides opportunities for interaction among peers

Wichita State University - School of Performing Arts
BACHELOR OF FINE ARTS: DANCE

**BFA - CheckSheet
 2015-16
 F30J - DANC**

Student Name: _____

myWSU #: _____ Catalog Yr: _____

Advisor: NJ, DC, SV

Requirements: GenEd: 42 cr.hrs.; Core 9; Dance Technique 48; Dance Major 25 cr.hrs.

www.wichita.edu/performingarts

Total needed for BFA: 124 credit hours, including **45 cr.hrs Upper-Division (300+)**; Overall GPA 2.0; Major GPA 2.5

General Education - 42 cr.hrs.						
Tier 1	English 100 or 101 (min.grade: C-)			3		
	English 102 (min.grade: C-)			3		
	Communication 111 (min.grade: C-)			3		
	Math 111, 112 or 131 (min.grade: C-)			3		
Tier 2	*NOTES: Dance majors cannot use Dance courses in their General Education requirements. See Academic Advisor for all GenEd selections. Courses in each area must be distributed over 2 subjects. 3 F/S and/or I&P courses needed: 2 F.S. from different disciplines + 1 I&P, or 2 I&P from different subjects + 1 F/S.			FINE ART (A1) (not DANC)	3	
				HUMANITY (A2)	3	
				HUMANITY (A2)	3	
				SOCIAL & BEH. SCI. (B2)	3	
				SOCIAL & BEH. SCI. (B2)	3	
				MATH & NAT. SCI. (C2) Bio/Chem/Geol/Phys	3	
				MATH & NAT. SCI. (C2)	3	
				Further Study (A4,B4,C4) 300+	3	
Tier 3				Issue & Persp. (A6,B6,C6) (not DANC)	3	
				F/S or I&P (*see notes)	3	
CORE CURRICULUM - 9 cr.hrs.						
THEA 243	Acting 1	3				
THEA 218; DANC 201; 210 or 227	Stage Movmnt; Modern 1; Ballet 1; or Mime/PhysTheatre	counted in technique area				
THEA 244; 253 or 345	Stagecraft; Costuming for Stage & Film; or Lighting	3				
DANCE Major Requirements - 25 cr. hrs.						
DANC 225	Dance History (Anc.-1900s)	3				
DANC 305	Choreography 1	3				
DANC 320	Performance (1 cr.hr.)	3				
DANC 325	Dance History (1900s-curr.)	3				
DANC 405	Choreography 2	3				
DANC 415	Dance Kinesiology	3				
DANC 505	Choreography 3	3				
DANC 545	Methods of Teaching Dance	3				
DANC 580	Senior Project	1				
*NOTE: Faculty Advisor approval is required for all Dance Technique class levels after 1. (Major requires two level 4's in same discipline)						
MODERN Technique - 15 cr.hrs.						
DANC 201	Modern 1, 2, 3	15				
301, 401						
BALLET Technique - 15 cr.hrs.						
DANC 210	Ballet 1, 2, 3	15				
310, 410						
JAZZ Technique - 15 cr.hrs.						
DANC 235	Jazz 1, 2, 3	15				
335, 435						
Level 4 Technique - 6 cr.hrs.						
6 cr.hrs. of level 4 must be taken in same discipline						
DANC 501 or 510 or 535	Modern 4 -or- Ballet 4 -or- Jazz 4	6				
Total Credit Hours Required for BFA-DANC:			124			

Dance Director: nick.johnson@wichita.edu
 Dance Instructor: sabrina.vasquez@wichita.edu

Prof. of Dance: denise.celestin@wichita.edu
 Academic Advisor: julie.holmes@wichita.edu

Wichita State University SCHOOL OF PERFORMING ARTS — Bachelor of Arts: **DANCE**

Student Name: _____
first mi last

MyWSU ID#: _____

BA-Checksheet	
2015-16	
F30L	DABA

Requirements: Performing Arts Core 9; Major Hrs 45; Electives outside SPA 15; Electives based on plan of study 9.

Catalog Yr: _____

Total needed for BA: 120 credit hours, including **45 cr.hrs Upper-Division (300+)**; Overall GPA 2.0; Major GPA 2.5

Advisor: NJ, DC, SV, CC

GENERAL EDUCATION REQUIREMENTS* See Handout			
Tier 1	English 100 or 101 (min.grade: C-)	3	
	English 102 (min.grade: C-)	3	
	Communication 111 (min.grade: C-)	3	
	Math 111, 112 or 131 (min.grade: C-)	3	
Tier 2	FINE ART (A1) (Not DANC)	3	
	HUMANITY (A2)	3	
	HUMANITY (A2)	3	
	SOCIAL & BEH. SCI. (B2)	3	
	SOCIAL & BEH. SCI. (B2)	3	
	MATH & NAT. SCI. (C2) Bio/Chem/Geol/Phys	3	
	MATH & NAT. SCI. (C2)	3	
Tier 3	Further Study (A4,B4,C4) (Not DANC) 300+	3	
	Issue & Persp. (A6,B6,C6) (Not DANC) 300+	3	
	F/S or I&P (*see notes) 300+	3	
CORE CURRICULUM - 9 cr.hrs.			
THEA 243	Acting 1	3	
THEA 218; DANC 201; 210 or 227	Stage Movement; Modern 1; Ballet 1; or Mime/PhysTheatre	3	
THEA 244; 253 or 345	Stagecraft; Costuming for for Stage & Film; or Lighting	3	
Minor or Elective outside SPA 15 cr.hrs. w/Advisor Approval			
		3	
		3	
		3	
	300+	3	
	300+	3	

*NOTE: Faculty Advisor approval is required for all Dance Technique class levels after 1. (Minimum proficiency must be at level 2, classes may be repeated for credit).

MODERN Technique - 12 cr.hrs.			
DANC 201, 301 401, 501	Modern 1, 2, 3, 4	12	
BALLET Technique - 12 cr.hrs.			
DANC 210, 310 410, 510	Ballet 1, 2, 3, 4	12	
JAZZ Technique - 12 cr.hrs.			
DANC 235, 335 435, 535	Jazz 1, 2, 3, 4	12	
DANCE ACADEMICS / THEORY - 9 cr.hrs.			
DANC 225 or 325	Dance History 1 or 2	3	
DANC 415	Dance Kinesiology	3	
DANC 580	Senior Project	1	
DANC 690	Special Topics	2	
ELECTIVES based			
		3	
	300+	3	
	300+	3	
Total Credit Hours Required for MTBA: 120			

***NOTES:** Dance majors cannot use GenEd DANC courses. See Academic Advisor for all GenEd selections. Courses in each area must be distributed over 2 subjects. 3 F/S and/or I&P courses needed: 2 F.S. from different disciplines + 1 I&P, or 2 I&P from different subjects + 1 F/S.

Dance Director: nick.johnson@wichita.edu, Prof. of Dance: denise.celestin@wichita.edu, Dance Instructor: sabrina.vasquez@wichita.edu

Plan of Study - BFA

Bachelor of Fine Arts: **DANCE**

This is a model of an ideal course plan--your program may vary based on individual talent and previous college credits.

DANC - F30J - 2015-16

* See Faculty Advisor for Course Selection

** See Academic Advisor for Course Selection

www.wichita.edu/performingarts

Freshman				Sophomore				Junior				Senior			
Fall		Spring		Fall		Spring		Fall		Spring		Fall		Spring	
English 100 or 101 College English 1	3	ENGL 102 College English 2	3	GenEd Intro Fine Art **	3	GenEd Intro Mth/ Nat.Sci **	3	GenEd Intro Soc/ Beh.Sci **	3	GenEd Intro Humanity **	3	GenEd Issues & Persp. **	3	GenEd F/S or I&P **	3
COMM 111 Public Speaking	3	MATH 111, 112, or 131	3			GenEd Intro Biol/Chem/ Geol/Phys **	3	DANC 320 Performance	1	GenEd Intro Soc/ Beh.Sci **	3	GenEd Intro Humanity **	3	GenEd Further Study **	3
Ballet Technique DANC 210/310 Ballet 1 or 2 *	3	Ballet Technique DANC 210/310 Ballet 1 or 2 *	3	THEA 243 Acting 1	3	Ballet Technique DANC 310/410 Ballet 2 or 3 *	3	Ballet Technique DANC 410 Ballet 3 *	3	DANC 320 Performance * attend/assist dance class	1	Ballet Tech. DANC 410/510 Ballet 3 or 4 *	3	Level 4 Dance course in selected discipline.	3
Jazz Technique DANC 235/335 Jazz 1 or 2 *	3	Jazz Technique DANC 235/335 Jazz 1 or 2 *	3	Jazz Technique DANC 335/435 Jazz 2 or 3 *	3	Modern Technique DANC 401 Modern 3 *	3	Jazz Technique DANC 435 Jazz 3 *	3	Modern Tech. DANC 401/501 Mod. 3 or 4 *	3	Level 4 Dance course in selected discipline.	3	Jazz Technique DANC 435/535 Jazz 3 or 4 *	3
Modern Technique DANC 201 Modern 1 *	3	Modern Technique DANC 201/301 Modern 1 or 2 *	3	Modern Technique DANC 301/401 Mod. 2 or 3 *	3	THEA Technical Course	3	DANC 305 Choreography 1 (fall)	3	DANC 405 Choreography 2 (spr)	3	DANC 505 Choreography 3 (fall)	3	DANC 580 Sr.Project * attend/assist dance class	1
				DANC 225 Dance History (fall/odd) - or- DANC 415 Kinesiology (fall/even)	3	* attend dance class		DANC 225 Dance History (fall/odd) - or- DANC 415 Kinesiology (fall/even)	3	DANC 325 Dance History (spr/even) -or- DANC 545 Methods of Teaching Dance (spr/odd)	3	DANC 320 Performance * attend/assist dance class	1	DANC 325 Dance History (spr/even) -or- DANC 545 Methods of Teaching Dance (spr/odd)	3
Spring Juries				Spring Juries				Spring Juries				Spring Juries			
15		15		15		15		16		16		16		16	
Total Credit Hours for BFA-DANC:															124

revised: 3/17/15

Academic Advisor: julie.holmes@wichita.edu

Plan of Study - BA

This is a model of an ideal course plan--your program may vary based on individual talent and previous college credits.

* See Faculty Advisor for Course Selection

** See Academic Advisor for Course Selection

Bachelor of Arts: **DANCE**

DABA - F30L - 2015-16

www.wichita.edu/performingarts

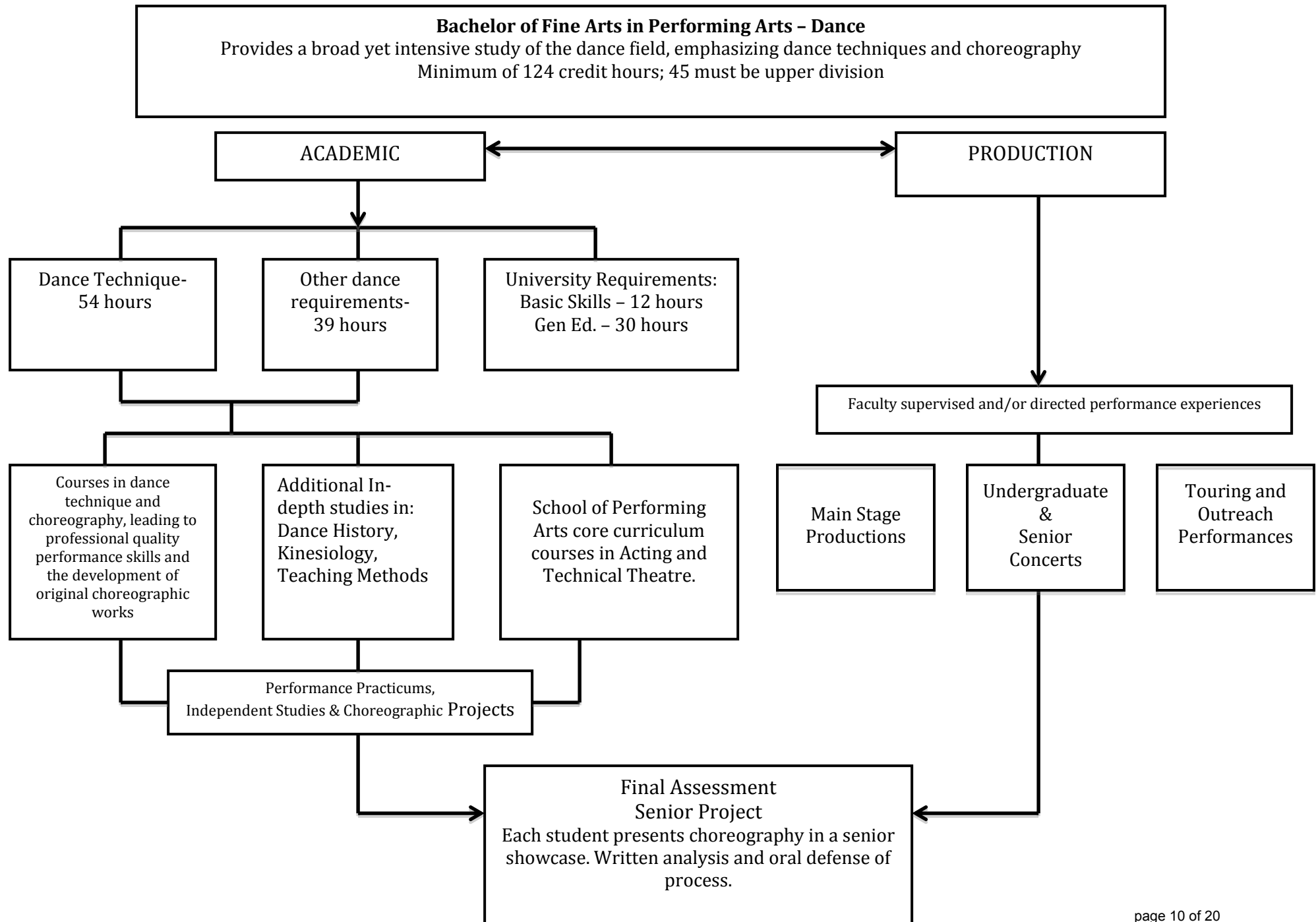
Freshman				Sophomore				Junior				Submit AFD	Senior			
Fall		Spring		Fall		Spring		Fall		Spring			Fall		Spring	
English 100 or 101 College English 1	3	ENGL 102 College English 2	3	GenEd Intro Fine Art **	3	GenEd Intro Mth/ Nat.Sci **	3	GenEd Intro Soc/ Beh.Sci **	3	GenEd Intro Humanity **	3		GenEd Issues & Persp. **	3	GenEd F/S or I&P **	3
COMM 111 Public Speaking	3	MATH 111, 112, or 131	3	GenEd Intro Humanity **	3	GenEd Intro Soc. / Beh. Science **	3	GenEd Intro Biol/Chem/ Geol/Phys **	3	GenEd Further Study **	3		Minor or Elective outside Performing Arts 300+ **	3	Minor or Elective outside Performing Arts 300+ **	3
Ballet Technique DANC 210/310 Ballet 1 or 2 *	3	Ballet Technique DANC 210/310 Ballet 1 or 2 *	3	Jazz Technique DANC 235/ 335 Jazz 1 or 2 *	3	Ballet Technique DANC 210/310 Ballet 1 or 2 *	3	DANC 415 Kinesiology (fall/even) -or- Plan of Study Course 300+ *	3	Ballet Technique DANC 310/410 Ballet 2 or 3 *	3		DANC 415 Kinesiology (fall/even) -or- Plan of Study Course 300+ *	3	Modern Technique DANC 301/401 Mod. 2 or 3 *	3
Jazz Technique DANC 235/ 335 Jazz 1 or 2 *	3	Jazz Technique DANC 235/ 335 Jazz 1 or 2 *	3	Modern Technique DANC 201/301 Modern 1 or 2 *	3	Minor or Elective outside Performing Arts **	3	Modern Technique DANC 201/301 Modern 1 or 2 *	3	Minor or Elective outside Performing Arts **	3		Jazz Technique DANC 335/435 Jazz 2 or 3 *	3	DANC 580 Sr.Project	1
Modern Technique DANC 201 Modern 1 *	3	THEA 243 Acting 1	3	THEA Technical Course	3	THEA or DANC Stage Movement course	3	DANC 225 or 325 Dance History -or- Plan of Study course *	3	Plan of Study Course *	3		Minor or Elective outside Performing Arts **	3	DANC 225 or 325 Dance History -or- Plan of Study course 300+ *	3
		* attend dance class		* attend dance class		* attend dance class		* attend dance class		* attend/assist dance class			DANC 690 Spec.Topics	2		
15		15		15		15		15		15			17		13	
Academic Advisor: julie.holmes@wichita.edu												Total Credit Hours: 120				

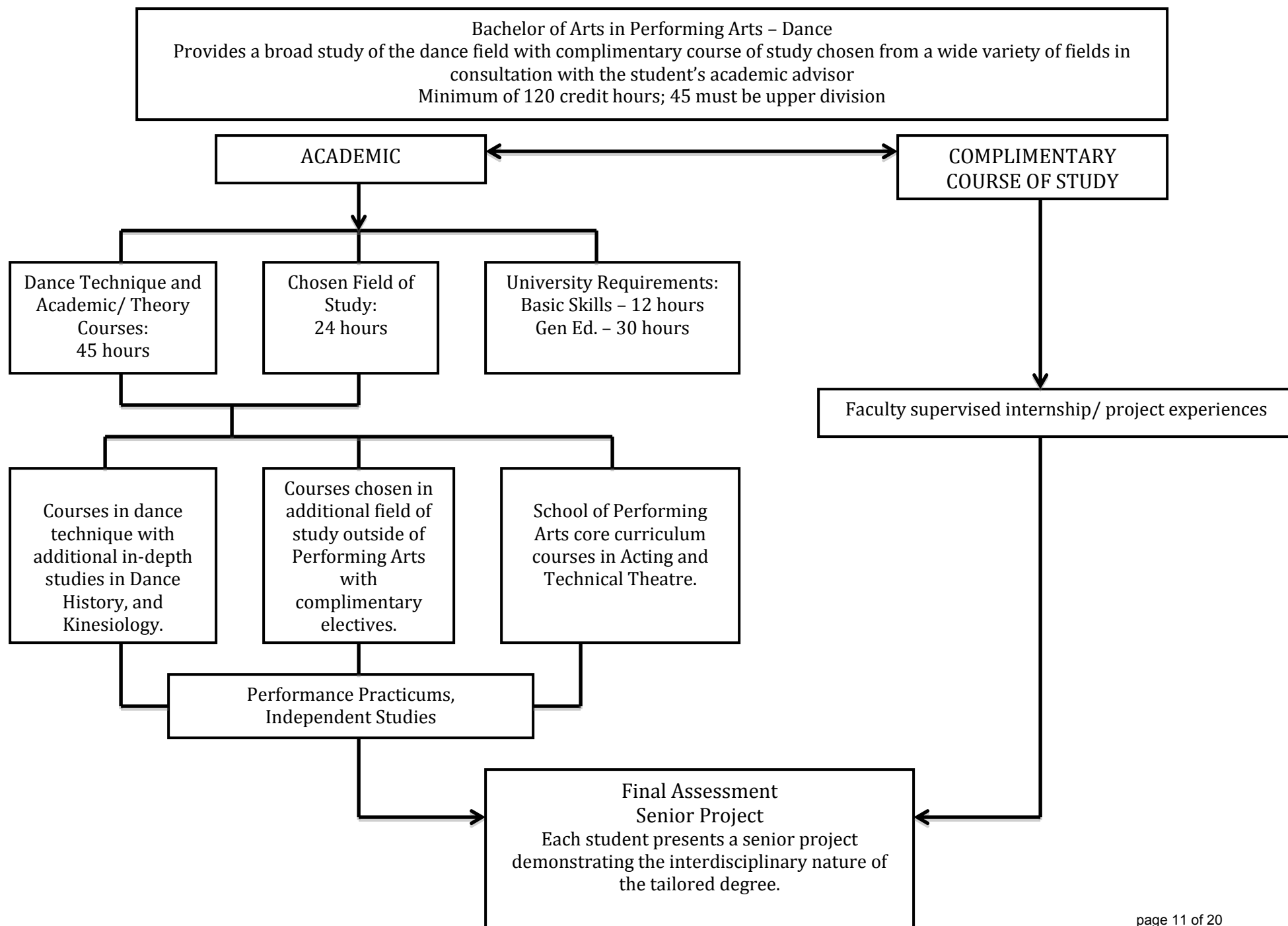
COURSE ROTATION OVERVIEW - DANCE

Catalog Course No. (Credits)	Offered
130A Ballroom 1 (2)	Every Semester
130V Hip Hop (2)	Every Semester
140 Art of Dance (3)	Every Semester
201 Modern 1 (3)	Every Semester
210 Ballet 1 (3)	Every Semester
225 Dance History – Ancient Civilization to 1900's (3)	Fall, Odd Years
227 Mime (3)	Every Semester
235 Jazz 1 (3)	Every Semester
230 Musical Theatre Dance 1 (3)	Every Fall
240 Tap 1	Every Fall
301 Modern 2 (3)	Every Semester
305 Choreography 1 (3)	Every Fall
310 Ballet 2 (3)	Every Semester
320 Performance (1)	Every Semester
325 Dance History – 20 th & 21 st Century(3)	Spring Even Years
330 Musical Theatre Dance 2 (3)	Every Spring
335 Jazz 3 (3)	Every Semester
340 Tap 2	Every Spring
401* Modern 3 (3)	Every Semester
405 Choreography 2 (3)	Every Spring
410* Ballet 3 (3)	Every Semester
415 Dance Kinesiology (3)	Fall, Even Years
435* Jazz 3 (3)	Every Fall
501* Modern 4 (3)	Every Semester
505 Choreography 3 (3)	Every Fall
510* Ballet 4 (3)	Every Semester
535* Jazz 4 (3)	Every Fall
545 Methods of Teaching Dance	Spring Odd Years

*COURSES THAT COMBINE LEVELS

PLEASE NOTE THAT WHILE THIS IS THE SCHEDULING PLAN, CHANGES ARE SOMETIMES NECESSARY AND UNAVOIDABLE. IF YOU HAVE A PROBLEM CONCERNING A SPECIFIC COURSE, PLEASE SEE YOUR ADVISOR.





EXPECTATIONS IN DANCE PERFORMANCE CLASSIFICATION BASED

Freshman: Beginning/Intermediate Level

Student demonstrates potential understanding of the following areas:

PERFORMANCE QUALITIES

Command of space, Breath, Flow, Changes in dynamics

TECHNICAL PROFICIENCY

Knowledge and application, Attack/commitment, Strength/control

PHYSICAL FACILITY

Productive/non-productive weight, Flexibility, Muscular definition, Range of motion

Sophomore: Intermediate Level

Student demonstrates an understanding of the following areas:

PERFORMANCE QUALITIES

Command of space, Breath, Flow, Changes in dynamics

TECHNICAL PROFICIENCY

Knowledge and application, Attack/commitment, Strength/control

PHYSICAL FACILITY

Productive/non-productive weight, Flexibility, Muscular definition, Range of motion

Junior: Intermediate/Advanced

Student demonstrates a further understanding of and development in the following areas:

PERFORMANCE QUALITIES

Command of space, Breath, Flow, Changes in dynamics

TECHNICAL PROFICIENCY

Knowledge and application, Attack/commitment, Strength/control

PHYSICAL FACILITY

Productive/non-productive weight, Flexibility, Muscular definition, Range of motion

CHOREOGRAPHY -

Concept, Choreographic Construction, Aesthetic

Senior: Advanced

Student demonstrates advanced /pre-professional understanding of and development in the following areas:

PERFORMANCE QUALITIES

Command of space, Breath, Flow, Changes in dynamics

TECHNICAL PROFICIENCY

Knowledge and application, Attack/Commitment, Strength/control

PHYSICAL FACILITY

Productive/non-productive weight, Flexibility, Muscular definition, Range of motion

CHOREOGRAPHY

Concept, Choreographic Construction, Rehearsal Process, Aesthetic

Self-Assessment

Revised 3/2013

CRITERIA FOR ASSESSMENT

PERFORMANCE QUALITIES

COMMAND OF SPACE (To travel in, through and around the space with momentum and confidence)

BREATH (Use of breath that reflects in your body and face)

FLOW (Overall connection and interpretation of the given movement)

CHANGES IN DYNAMICS (Energy output is authentic and appropriate for the movement executed)

TECHNICAL PROFICIENCY

KNOWLEDGE AND APPLICATION (Clear example of technique that is learned and applied)

ATTACK/COMMITMENT (Consistency and confidence while using your technique)

STRENGTH/CONTROL (Demonstration of physical strength and muscular consistency)

LEARNING OF MATERIAL

RATE OF LEARNING (Rate at which movement is interpreted into a dancer's body and executed with performance quality)

ACCURACY (Precise physical interpretation of the movement given)

ADAPTATION (How are you able to adapt and interpret the movement given)

PHYSICAL FACILITY

PRODUCTIVE/NON-PRODUCTIVE WEIGHT

FLEXIBILITY

MUSCULAR DEFINITION

RANGE OF MOTION

SCORING LEVEL

1-3 BEGINNING LEVEL

4-6 INTERMEDIATE LEVEL

7-9 ADVANCED LEVEL

DANCE DEPARTMENT JURY FEEDBACK SHEET

Semester/Year _____

NAME:**CURRENT DEPARTMENTAL STATUS (NUMBER OF SEMESTERS IN PROGRAM):****CURRENT UNIVERSITY STATUS:****PROJECTED GRADUATION DATE - SEMSTER/YEAR:**

<u>BALLET</u>	Beginning			Intermediate			Advanced		
	1	2	3	4	5	6	7	8	9
PERFORMANCE QUALITIES									

COMMENTS:

TECHNICAL PROFICIENCY	1	2	3	4	5	6	7	8	9
------------------------------	---	---	---	---	---	---	---	---	---

COMMENTS:

LEARNING OF MATERIAL	1	2	3	4	5	6	7	8	9
-----------------------------	---	---	---	---	---	---	---	---	---

COMMENTS:

<u>MODERN</u>	Beginning			Intermediate			Advanced		
	1	2	3	4	5	6	7	8	9
PERFORMANCE QUALITIES									

COMMENTS:

TECHNICAL PROFICIENCY	1	2	3	4	5	6	7	8	9
------------------------------	---	---	---	---	---	---	---	---	---

COMMENTS:

LEARNING OF MATERIAL	1	2	3	4	5	6	7	8	9
-----------------------------	---	---	---	---	---	---	---	---	---

COMMENTS:

<u>JAZZ</u>	Beginning			Intermediate			Advanced		
PERFORMANCE QUALITIES	1	2	3	4	5	6	7	8	9
COMMENTS:									
TECHNICAL PROFICIENCY	1	2	3	4	5	6	7	8	9
COMMENTS:									
LEARNING OF MATERIAL	1	2	3	4	5	6	7	8	9
COMMENTS:									

<u>OVERALL ASSESMENT</u>	Beginning			Intermediate			Advanced		
PERFORMANCE QUALITIES	1	2	3	4	5	6	7	8	9
COMMENTS:									
TECHNICAL PROFICIENCY	1	2	3	4	5	6	7	8	9
COMMENTS:									
LEARNING OF MATERIAL	1	2	3	4	5	6	7	8	9
COMMENTS:									
PHYSICAL FACILITY	1	2	3	4	5	6	7	8	9
COMMENTS:									

SUGGESTIONS FOR SUMMER AND NEXT SEMESTER:

Course Outline: Dance 580 (BFA)
Senior Project

FALL/SPRING

Times arranged

1 credit hour

Instructors: Nick Johnson,
Denise Celestin, Sabrina Vasquez,
Cheyla Chandler
Hours: By appointment

Course Description:

Senior Project is the capstone of a Dance Major's educational experience. The project comprises a final concert and research paper that will demonstrate skill in self-evaluative writing, knowledge of principles learned in the choreography course sequence and refinement of technical proficiency, culminating in the presentation of work in the Senior Showcase.

Requirements:

1. Choreography and rehearsal of a minimum of one solo piece and a group work consisting of 5 or more dancers.
2. A written research paper that covers the process of the creating the senior dance concert, including initial choreographic concepts, rehearsal process and production elements.
3. Oral defense of the senior concert and research paper with the dance faculty.

REQUIREMENTS & GRADING:

Choreographic Works (50%)

The student must provide two choreographic works: a solo (which may be choreographed by himself/herself, or set on the student by another dancer/choreographer) and a group work that consists of five (5) or more dancers with a minimum time of 7 minutes. The student is responsible for all casting, rehearsal scheduling, production components and marketing of the concert. The student will provide video progress of the choreography through the process to his/her advisor or other faculty mentor for feedback and dialogue. Video uploading and viewing sites will be discussed with the individual advisor/mentor.

Senior Project Portfolio Presentation (50%)

Presentation of the Senior Concert Portfolio and Oral Defense is generally scheduled during the final week following presentation of the Senior Concert. The presentation and review consists of the following:

1. Presentation of the Portfolio

Written analysis and description of the theoretical framework, compositional development, analysis of production and conclusions.

Written analysis includes:

Statement of the Purpose: The nature of the choreographic challenge. Performance problems confronted. Rationale for project and theoretical background for project design (e.g. influences, stylistic considerations, historical precedents and references).

Description of the Project: A narrative describing the production from inception to final presentation.

Evaluation of Project: Examination of the project for elements of success and challenges. Propose changes, additions, alterations to the process of conception, choreographic/performance plotting and design, rehearsal and production.

Appropriate Bibliography: Include citation of all source materials and description of references. For written references follow standard MLA (Modern Language Association) guidelines. For material/personal references document completely as necessary for the mature reader to appreciate the significance of the contribution.

These materials, in bound form, must be approved by the student's faculty advisor and submitted to the faculty no later than **one week** following the Senior Concert, allowing time for faculty review.

2. **Oral presentation of Portfolio materials to the Committee.**

An oral presentation of the contents of the Portfolio to a committee of the faculty will be scheduled by the student in consultation with the major advisor.

3. **Question and Answer period following the Oral Defense.**

4. **Oral Critique of the Senior Project and Portfolio by Committee.**

5. **Discussion of experience in the Dance Program and future plans.**

A period of discussion between the student and committee members will conclude the Oral Defense. The student's experience in the Dance Program, plans for the future and recommendations from the faculty will be discussed.

***Please note that if the student does not complete all requirements listed above in time for end of semester grading, an "I" grade will be submitted. The "I" grade will be subject to current WSU grading policies.**

Concert Timeline

Beginning of the semester

Cast List on callboard
Rehearsal schedule posted
Consult lighting designer
Create budget for costs (if needed)
Discuss ideas with advisor or mentor

Mid-semester/halfway point to concert date

Consult lighting designer
Begin creating Poster (in collaboration with other graduating seniors)
Explore costuming ideas
Video and post movement for advisor or mentor

2 Weeks from Concert

Create technical rehearsal schedule (in collaboration with other graduating seniors)
Confirm backstage crew/ front of house crew (in collaboration with other graduating seniors)
Finish and distribute Poster
Begin creating Program (in collaboration with other graduating seniors)
Complete costuming for choreographic works
Keep advisor/mentor informed of progress

1 week from Concert

Order chairs
Finish and print programs
Confirm videographer
Order Moneybox
Arrange personnel and time for set-up of chairs

End of Concert

Strike the chairs, risers and stage area
Clean the studio and lounge area

Course Outline: Dance 580 (B.A.)
Senior Project
FALL/SPRING
Times arranged
1 credit hour

Instructors: Nick Johnson,
Denise Celestin, Sabrina Vasquez
Hours: By appointment

Course Description:

Senior Project is the capstone of a Dance Major's educational experience. The project comprises a final project and research paper that will demonstrate skill in self-evaluative writing, knowledge of principles learned in the dance emphasis and complimentary course of study culminating in a presentation to the dance faculty.

Requirements:

1. A project devised in consultation with the dance advisor/mentor.
2. A written research paper that covers the process of the creating the senior dance project, including initial project concepts, conception process and additional elements.
3. Oral defense of the senior project and research paper with the dance faculty.

REQUIREMENTS & GRADING:
CREATIVE PROJECT (50%)

The student must provide a cohesive project that reflects the dance emphasis with the complimentary course of study. This may be comprised of a studio project, a research project, or other format. The student will provide video or written/oral progress of the process to his/her advisor or other faculty mentor for feedback and dialogue.

SENIOR PROJECT PORTFOLIO PRESENTATION (50%)

Presentation of the Senior Project Portfolio and Oral Defense is generally scheduled during the final week following presentation of the Senior Project. The presentation and review consists of the following:

1. **Presentation of the Portfolio**

Written analysis and description of the theoretical framework, development, analysis of project and conclusions.

Written analysis includes:

Statement of the Purpose: The nature of the conceptual challenge. Problems confronted. Rationale for project and theoretical background for project design (e.g. influences, stylistic considerations, historical precedents and references).

Description of the Project: A narrative describing the project from inception to final presentation.

Evaluation of Project: Examination of the project for elements of success and challenges. Propose changes, additions, alterations to the creative process.

Appropriate Bibliography: Include citation of all source materials and description of references. For written references follow standard MLA (Modern Language Association) guidelines. For material/personal references document completely as necessary for the mature reader to appreciate the significance of the contribution.

These materials, in bound form, must be approved by the student's faculty advisor and submitted to the faculty no later than **one week** following the scheduled oral presentation, allowing time for faculty review.

2. **Oral presentation of Portfolio materials to the Committee.**

An oral presentation of the contents of the Portfolio to a committee of the faculty will be scheduled by the student in consultation with the major advisor.

3. **Question and Answer period following the Oral Defense.**

4. **Oral Critique of the Senior Project and Portfolio by Committee.**

5. **Discussion of experience in the Dance Program and future plans.**

A period of discussion between the student and committee members will conclude the Oral Defense. The student's experience in the Dance Program, plans for the future and recommendations from the faculty will be discussed.

***Please note that if the student does not complete all requirements listed above in time for end of semester grading, an "I" grade will be submitted. The "I" grade will be subject to current WSU grading policies.**