

WICHITA STATE UNIVERSITY

SCHOOL OF PERFORMING ARTS PRESENTS



SPRING AWAKENING

RATED R

BOOK & LYRICS BY STEVEN SATER

MUSIC BY DUNCAN SHEIK

BASED ON THE PLAY BY FRANK WEDEKIND

"gritty, groundbreaking" & "a must-see musical"

New York Post

WILNER
AUDITORIUM

"gorgeous score," "passionate story," &

"charismatic production"

Star Ledger

\$20, \$18, \$12

1 FREE STUDENT
TICKET W/MYWSU ID

"sexy, original & beautifully crafted"

Journal News

BOX OFFICE:
316.978.3233



FEB 20-22 @ 7:30P
FEB 23 @ 2:00P



WICHITA.UNIVERSITYTICKETS.COM

THE SCHOOL OF PERFORMING ARTS

PRESENTS

SPRING AWAKENING

BOOK & LYRICS BY STEVEN SATER

MUSIC BY DUCAN SHEIK

BASED ON THE PLAY BY FRANK WEDEKIND

DIRECTOR
Jacob McGlaun

CHOREOGRAPHER/
INTIMACY DIRECTOR
Molly Tully

MUSIC DIRECTOR
Dacia Brown

STAGE
MANAGER
Blake Grimsley

ASSISTANT
STAGE MANAGER
Ace La Valla

ASSISTANT
STAGE MANAGER
AJ Corbett

LIGHTING
DESIGNER
Maddie Nevins-Butler

CO-SCENIC
DESIGNER
Fio Willis

CO-SCENIC
DESIGNER
Leopold Porcaro

COSTUME/HAIR &
MAKEUP DESIGNER
Mia Dennett

ASSISTANT COSTUME/HAIR
& MAKEUP DESIGNER
Seferino Ramirez Jr.

SOUND
DESIGNER
David Muehl

PROPERTIES
COORDINATOR
Ya Mi Vang

TECHNICAL
DIRECTOR
Ed Baker

ASSISTANT TECHNICAL
DIRECTOR
Will Smith

PRODUCTION
COORDINATOR
Ben Juhnke

ARTISTIC
DIRECTOR/PRODUCER
Cheyla Clawson

FIGHT
CHOREOGRAPHER
Joseph Urick

Note: Spring Awakening contains depictions of sex, partial nudity, explicit language, and scenes depicting physical violence/abuse, verbal abuse, and attempted self-harm in addition to discussions of sexual abuse. Suicide and abortion are implied. This show uses haze and moments of darkness in addition to theatrical weapons and blood. A gunshot sound effect will be used in Act 2.

FACULTY & GUEST ARTISTS



Jacob McGlaun (*Director*) is very excited to be directing his first university production! He earned a Bachelor of Fine Arts in Performing Arts with an emphasis in Musical Theater from the University of Michigan and a Master of Fine Arts in Movement from London's Royal Central School of Speech and Drama, with additional training in Meisner Technique at New York City's Neighborhood Playhouse. A seasoned musical theater performer, Jacob's credits span off-Broadway stages, iconic New York City Cabaret venues and regional theaters across the country. His international production work has graced stages in London and Italy, bringing a diverse array of firsthand experience to his practice.



Dacia Brown (*Music Director*) is so thrilled to be at Wichita State University as a part of this remarkable production! Favorite past productions include: *Rocky Horror Show* (Crown Arts Collaborative), *Express* (WSU), *Dreamgirls* (Crown Arts Collaborative), *School of Rock* (Maize Rec Theater), and just about any given weekend at Mosley Street Melodrama! She is a graduate of Washburn University's music program, under the tutelage of Professor James Rivers. Dacia holds the position of staff accompanist at Goddard Eisenhower High School, teaches piano lessons from her home studio, and is the music director at your favorite local audience participation theater - Mosley Street Melodrama! Dacia would thank Amy, Jacob, Molly and the incredible cast, crew, and orchestra for all their hard work and dedication! This show is so special and they've put all they have into making it exceptional. Much love to Arissa, Weston, Anna, my parents, and the dearest friends who are like family. Enjoy the show!



Cheyla Clawson, MA, MFA (*Director of SPA/Artistic Director/Producer*) is an Associate Professor of Dance and the Director of the School of Performing Arts at Wichita State University. Chandler's modern dance research is focused on Horton Technique, and she attended the Horton Dance Technique Certificate Program 2013-2020 at The Ailey School in New York City. Her two duets, *Anam Chara* (2014) and *nosuchSymbiosis* (2016) were invited to The American College Dance Association National Festival at The Kennedy Center in Washington, D.C. Cheyla presented her latest research focused on community integration curriculum in dance performance degrees at The International Arts in Society conference in June 2022 (Australia), gave a workshop on Dance and Diversity, Equity, and Inclusion for the American College Dance Association online National Workshop series in March of 2021 as well as community-based intergenerational research at The American Dance Symposium in NYC in January of 2023. At WSU, Cheyla is a member of the Student Success and Persistence Coalition, the President's Diversity Council, and the University Assessment Committee. She coordinates the College of Fine Arts Diversity, Equity, Inclusion, Access, and Belonging Committee and is a doctoral candidate in the Educational Leadership Program. Beyond WSU, Cheyla is a Policy Board Member for the National Dance Education Organization.

FACULTY & GUEST ARTISTS



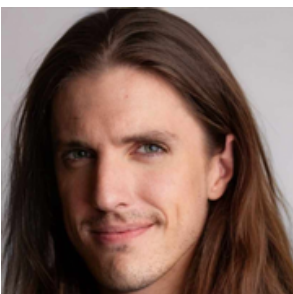
Ben Juhnke (*Production Coordinator*) earned his Bachelor of Fine Arts in Technical Theatre and Design from Wichita State University and has been working locally in the Wichita theatre community ever since. Ben served 10 years as the Production Stage Manager for the Wichita Symphony Orchestra and has worked on 25 Seasons of Productions with Music Theatre of Wichita. His credits include productions for: The Forum Theatre, Wichita Grand Opera, *Titanic* National Tour, *Wicked* National Tour, Northwest Nazarene University, Aspen Community Theatre, Rob Thomas, 24 Hrs to Hell and Back, New Years Day, Steven Curtis Chapman, Rich Mullins Tribute Tour and Super Bowl Live. Since 2002 Ben has been a proud member of the local Stagehands Union. When not working in the Arts he runs a Disney Travel business connecting people with their Dream Disney Vacation. He has always found joy in connecting people to the arts. Ben would like to thank his loving wife Emily, and their two daughters, Hope and Ellie for all their support.



Maddie Nevins-Butler (*Lighting Designer*) is thrilled to be working on *Spring Awakening* with Wichita State University Theatre. She has numerous design credits, including serving as Lighting Designer for *Hello Dolly* (Music Theatre Wichita), but her proudest accomplishment is being the owner of Kent Audio Visual. Maddie is a graduate of Wichita State University, an active community member, and a member of Audiovisual and Integrated Experience Association (AVIXA) and International Alliance of Theatrical Stage Employee Local 190 (IATSE). Her mission is to use design and technology to tell compelling stories—onstage, in meetings, and in corporate spaces—while leading with empathy and ensuring that innovation enhances human connection.



Molly Tully (*Choreographer/Intimacy Director*) is a Wichita-based actor, director, choreographer, writer, and intimacy professional. Molly has previously worked as the Intimacy Director for Wichita State University's production of *Pippin* and *Stupid F##king Bird*. Molly's other theatrical intimacy work includes Music Theatre Wichita *Jersey Boys*, *42nd Street*, and *Kinky Boots* along with the Crown Arts Collaborative *Next to Normal*, *The Wedding Singer*, and *The Rocky Horror Show*.



Joseph Urick (*Fight Choreographer*) is the Assistant Professor of Acting & Voice at Wichita State University. Joseph is an award-winning actor from New York City and has performed nationally and internationally for theatres in Florida, Kansas, New York, Texas, as well as in Greece. Joseph has produced staged violence for over 75 shows over the past decade, as well as combat and self-defense videos with police department in both Texas and Florida for their Active Shooter Safety Videos and Domestic Violence Awareness Training Programs. Joseph has produced several acclaimed productions, including *Rooms: a rock romance*; Edgar Allan Poe's *Nevermore*, *Quills*, *Race*, a Regional Tour of Jason Robert Brown's *The Last 5 Years*, and most recently, an adaptation of *Cyrano de Bergerac* at Kechi Playhouse. Joseph is a proud member of Actor's Equity. Masters of Fine Arts in Acting, University of Florida. AAC/SAFD. josephurick.com

MUSICAL NUMBERS

MAMA WHO BORE ME	WENDLA
MAMA WHO BORE ME (REPRISE)	GIRLS
ALL THAT'S KNOWN	MELCHIOR
THE BITCH OF LIVING	MORITZ WITH BOYS
MY JUNK	GIRLS & BOYS
TOUCH ME	BOYS & GIRLS
THE WORLD OF YOUR BODY	WENDLA, MELCHIOR
THE DARK I KNOW WELL	MARTHA, ILSE WITH BOYS
AND THEN THERE WERE NONE	MORITZ WITH BOYS
THE MIRROR-BLUE NIGHT	MELCHIOR WITH BOYS
I BELIEVE	BOYS WITH GIRLS
15 MINUTE INTERMISSION	
THE GUILTY ONES	WENDLA, MELCHIOR WITH BOYS & GIRLS
DON'T DO SADNESS	MORITZ
BLUE WIND	ILSE
LEFT BEHIND	MELCHIOR
TOTALLY FUCKED	MELCHIOR WITH FULL COMPANY
THE WORLD OF YOUR BODY (REPRISE)	HANSCHEN, ERNST WITH BOYS & GIRLS
WHISPERING	WENDLA
THOSE YOU'VE KNOWN	MORITZ, WENDLA, MELCHIOR
THE SONG OF PURPLE SUMMER	FULL COMPANY

CAST

MELCHIOR GABOR	SOLOMON PUCKETT
WENDLA BERGMAN	HAYLEY LOYA
ILSE NEUMANN	ZOE PHILLIPS
MORITZ STIEFEL	JACK WILSON
THEA	LEXYE COLLINS
MARTHA BESSELL	AVA RIVERA
ANNA	EMMA WHITNEY
ERNST ROBEL	JACOB CRABTREE
HANSCHEN RILOW	ZEKE THOMPSON
OTTO LAMMERMEIER	JOSHUA DURAN
GEORG ZIRSCHNITZ	JYAVON HILL
FRAU BERGMANN / DANCE CAPTAIN	KAETE MOKRYNSKI
FRAU GABOR / ENSEMBLE	FRANCIE ROBU
ADULT MEN / ENSEMBLE	GABE CORNWELL
ENSEMBLE	CAT SANDERS
ENSEMBLE	ALYSSA WATSON
ENSEMBLE	LUCAS SHROYER
ENSEMBLE	GRACIE SOLAS

CREATIVE TEAM

DIRECTOR	JACOB MCGLAUN
CHOREOGRAPHER/INTIMACY DIRECTOR	MOLLY TULLY
MUSIC DIRECTOR	DACIA BROWN
FIGHT CHOREOGRAPHER	JOSEPH URICK
STAGE MANAGER	BLAKE GRIMSLEY
ASSISTANT STAGE MANAGER	ACE LA VALLA, AJ CORBETT
STAGE MANAGEMENT MENTOR/TECHNICAL DIRECTOR	ED BAKER
ASSISTANT TECHNICAL DIRECTOR	WILL SMITH
LIGHTING DESIGNER	MADDIE NEVINS-BUTLER
CO-SCENIC DESIGNERS	FIO WILLIS, LEOPOLD PORCARO
SCENIC DESIGN MENTOR/PRODUCTION COORDINATOR	BEN JUHNKE
COSTUME/HAIR & MAKEUP DESIGNER	MIA DENNETT
ASSISTANT COSTUME/HAIR & MAKEUP DESIGNER	SEFERINO RAMIREZ JR.
COSTUME/HAIR & MAKEUP DESIGN MENTOR	SARAH BUSSARD
SOUND DESIGNER	DAVID MUEHL
PROPERTIES SUPERVISOR	YA MI VANG
SCENE SHOP/PROPERTIES SHOP MANAGEMENT	JASON FLANDERS
SCENE SHOP CREW LEAD	TREVOR ANDREASEN
SCENE SHOP CREW	JESSE STEPHENSON, ALEC MOORE, KATIE BAUMAN, FIO WILLIS, SKYLAR LANE, MOLLY BAZAR
COSTUME SHOP MANAGEMENT	MELISSA PENKAVA KOZA
LEAD COSTUME SHOP ASSISTANT	MIA DENNETT
COSTUME SHOP ASSISTANTS	NICK DREIER, EMILY FLOWERS, BLAKE GRISMLEY, EMMA LEWIS, NICK MACIAS, AVA NGUYEN, LEOPOLD PORCARO, SEFERINO RAMIERZ JR.
WARDROBE/HAIR & MAKEUP SUPERVISOR	EMILY FLOWERS
WARBDROBE/HAIR & MAKEUP RUN CREW	DELANEY DAVIS, EMILETH HOLCOMB, BEN GODINA, JESSI MILLER
COSTUME MAINTENANCE CREW	AVA POST, RUBY QUEZADA VALADEZ, CAT SANDERS, KATELEEN HO
DECK/SHIFT CREW	ELENA CIANCIOLO, SHANE VOELCKER, MYA BACON
PROP SHOP LEAD	MOLLY BAZAR

CREATIVE TEAM

PROPS RUN CREW	AUDREY JAGODZINSKE
LIGHTING SHOP EMPLOYEES	LENA CASTRO, RUBY QUEZADA VALADEZ
LIGHT BOARD OPERATOR	AVA POST
FOLLOW SPOT OPERATORS	SARA MOORE, EMMA MAY
AUDIO ASSISTANT	RUBY QUEZADA VALADEZ
HOUSE MANAGER	AMY BAKER SCHWIETHALE
USHERS	JORDAN BODENHAMER, ZOIE DANGERFIELD, LILI JIMENEZ
DIRECTOR OF SPA/ARTISTIC DIRECTOR/PRODUCER	CHEYLA CLAWSON

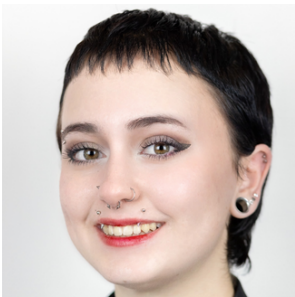
THE BAND

MUSIC DIRECTOR/KEYBOARD/HARMONIUM	DACIA BROWN
VIOLIN	JESSE HAVENER
VIOLA	SOPHIA ANDERSON
BASS	JORDAN BOLLIG
CELLO	LUCAS ROACH
GUITAR	ADRIAN TORRES
DRUMS	KIM TRUJILLO

BIOGRAPHIES



Lexye Collins (Thea) is a sophomore at Wichita State University, pursuing her Bachelor of Fine Arts in Performing Arts emphasis in Musical Theatre. She is also a proud member of the student led Wichita State Music Theatre Company (WSMTC) and a voice student of Stephanie Sheldon. Some of her most recent credits include "Susan Waverly" in *White Christmas* (The Forum) "Grandpa" in *The Trail To Oregon!* (WSMTC), "Judy Turner" in *A Chorus Line* (WSU), "Alison" in *Beehive* (The Forum), "SpongeBob" in *SpongeBob SquarePants* (Music Theatre Wichita-Music Theatre for Young People). Lexye would love to thank her family and friends for always being her biggest supporters! Insta: [@lexyecollins](https://www.instagram.com/lexyecollins)



AJ Corbett (*Assistant Stage Manager*) is a first year student pursuing a Bachelor of Fine Arts in Performing Arts with an emphasis in Design and Technical Theatre student! AJ is beyond excited to kick off their theater journey as an assistant stage manager at Wichita State! You may have seen them in productions at Andale High School, such as Pinocchio in *Shrek the Musical*, or an Ensemble member in *Seussical*. You could have also seen them in backstage action as the Assistant Director for Andales production of *The Lightning Thief*, and the 2023-2024 Technical Director for Andale High, as well as many stage managing and backstage opportunities at Andale High. AJ is beyond excited to continue their theatre journey at WSU in Wichita State Music Theatre Company's production of *The Guy Who Didn't Like Musicals* as the Technical Director, and Hair and Makeup Designer, this coming April! AJ would like to thank their fellow Stage Manger's for an amazing experience with this show! AJ would also like to thank their best friends (they know who they are) for being so supportive and patient throughout the process. They are so incredibly proud of this cast and everything they were able to accomplish! They hope you enjoy this show as much as they have!!!



Gabe Cornwell (*Adult Men/Ensemble*) is ready to debut on the Wilner Stage for the first time. His past roles include, Mr. Mushnik (*Little Shop of Horrors*) at Owasso Highschool, along with Wichita State University's Jo Zakas Musical Theatre Incubator Program's production of *Express* (World's Fair Man). Gabe hopes to bring theatre to people of all kinds and show that theatre is by anyone for everyone.



Jacob Crabtree (*Ernst Robel*) is a current first year student pursuing a Bachelor of Fine Arts in Performing Arts with an emphasis in Musical Theatre at Wichita State University, and he is so excited to be in *Spring Awakening!* He has done shows for Music Theater For Young People, Stage Lights Theater Company, Music Theatre Wichita, Wichita Children's Theater, and Andover High School and had the honor of being a Jester nominee in 2024. He would like to thank his parents, his sister, his girlfriend, and the cast and crew for making this the most incredible show experience!

BIOGRAPHIES



Mia Dennett (*Costume/Hair & Makeup Designer*) is thrilled to be designing for Wichita State University's production of *Spring Awakening*. She was previously Assistant Costume Designer for *Le Nozze di Figaro* (WSU) and Costume Designer for Shocker Studios *Christmas Spectacular* (WSU). She has previously been seen onstage in *Smokefall* (Empty Space Theatre) and *Peter and the Starcatcher* (WSU). Mia is a junior pursuing a Bachelor of Fine Arts in Performing Arts with an emphasis in Theatre through performance and costuming with a minor in American Sign Language. She serves as the Literary Director for Empty Space Theatre and the Membership and Outreach officer for Disability Rights, Education, Activism, and Mentorship (D.R.E.A.M).



Joshua Duran (*Otto Lammermeier*) is elated to return to the Wilner Auditorium stage! Some of his past credits include *The Music Man* (Fort Hays State University), *A Chorus Line* (Wichita State University), and *Little Shop of Horrors* (Family Community Theatre). Josh is currently pursuing an Associate of the in Liberal Arts through Butler Community College while studying musical theatre part-time at Wichita State University. He is also a member of the Wichita State Music Theatre Company (WSMTC).



Blake Grimsley (*Stage Manager*) (They/Them) is honored to be the Stage Manager for Wichita State University's School of Performing Arts production of *Spring Awakening*. Previous credits include Production Manager at Ballet Wichita, Production Crew at Aspen Music Festival and School, and Rigger for the International Alliance of Theatrical Stage Employees Local 190 (IATSE) over hire. Blake is currently a senior at WSU pursuing a Bachelor of Fine Arts in Performing Arts with an emphasis in Design and Technical Theatre, and a concentration in production/stage management. Next, you will see Blake back in Aspen, Colorado with Aspen Music Festival and School. To see more of Blake's work visit Blakegrimsley.com.



Jyavon Hill (*Georg Zirschnitz*) is excited to be a part of their 2nd show at Wichita State University. Previously they appeared in *The Trail to Oregon!* (Wichita State Music Theatre Company), *A Chorus Line* (WSU) and *Little Women* (Friends University). Jyavon is a junior pursuing a Bachelor of Fine Arts in Performing Arts with an emphasis in Musical Theatre. He is the Secretary for the Wichita State Music Theatre Company (WSMTC) and Digital Content Chairperson for Student Activities Council (SAC). Jyavon's goal is to make a safe space for others with his music!

BIOGRAPHIES



Ace La Valla (*Assistant Stage Manager*) is a sophomore majoring in a Bachelor of Fine Arts in Performing Arts with an emphasis in Design and Technical Theatre and Stage Management Certificate at Wichita State University. They have recently been the Stage Manager for *Six: Teen Edition* (The Academy), Stage Manager for *Joseph and the Amazing Technicolor Dreamcoat* (The Academy) and Assistant Stage Manager for *Beautiful: The Carole King Musical* (Music Theatre Wichita). Please Enjoy the Show!



Hayley Loya (*Wendla Bergmann*) Her early passion for the arts includes years of competitive dance and significant theater credits, including roles such as Lucy Harris in *Jekyll and Hyde* (Garden City Highschool), Phoebe D'Ysquith in *A Gentleman's Guide to Love and Murder* (Garden City Highschool), and Morticia Addams in *The Addams Family* (Garden City Highschool). Hayley is a first year student pursuing a Bachelor of Fine Arts in Performing Arts with an emphasis in Musical Theatre and a Bachelor of Music in Vocal Performance. From Garden City, Kansas, Hayley recently placed in the top five for Miss Kansas 2024. In February 2024, she made a notable Carnegie Hall debut with an honor choir. Hayley's diverse experience and achievements reflect her dedication to the performing arts and her drive to positively impact her community.



Kaete Mokrynski (*Frau Bergmann/Dance Captain*) is extremely grateful and excited to be in her second Wichita State University School of Performing Arts production. Last year she was Lois in *A Chorus Line* (WSU), Chinese corps de ballet and Drunk Party Mom in *The Nutcracker* (METROPOLITAN BALLET OF WICHITA) and Sally Bowles in *Cabaret* (ROXYS DOWNTOWN). Kaete is from Bergen County, New Jersey. Some of her recent New Jersey/New York credits include #2 in *The Wolves* (BERGEN PLAYERS) and Rosie in *Cabaret* (NTC AT THEATRE ROW NYC). Kaete has also spent the past 2 summers in the professional dance training program at the Ruth Page School of Dance in Chicago. She wishes the entire cast, crew, and creative team a beautiful and fantastic run!



Zoe Phillips (*Ilse Neumann*) is thrilled to be working on *Spring Awakening*. Previous credits include Director of *The Trail to Oregon!* (Wichita State Music Theatre Company), Val in *A Chorus Line* (Wichita State University) and Lysander in *A Midsummer Night's Dream* (Empty Space). Zoe is a senior pursuing a Bachelor of Fine Arts in Performing Arts with an emphasis in Musical Theatre. Zoe is the President of Wichita State Music Theatre Company.

BIOGRAPHIES



Leopold Porcaro (*Co-Scenic Designer*) has enjoyed working with Fio Willis on his first mainstage design. Previously, he served as Scenic/Hair and Makeup Designer for *The Trail to Oregon!* (Wichita State Music Theatre Company). He formerly appeared onstage as Curio/A Sea Captain in *Twelfth Night* (Wichita State University). Leopold is a junior pursuing a Bachelor of Fine Arts in Performing Arts with an emphasis in Design and Tech Theatre. His mission is to spread the joys of humanity through art.



Solomon Puckett (*Melchior Gabor*) is excited to make his Wichita State University premiere. He is pursuing a degree in Bachelor of Science in Mechanical Engineering with a minor in French. Some of his previous roles include Amos Hart in *Chicago*, Billy Cane in *Brightstar*, and Warner Huntington III in *Legally Blonde*. In his free time, you might catch him in the library studying calculus or chemistry. He wants to thank his friends, family, and this incredible creative team.

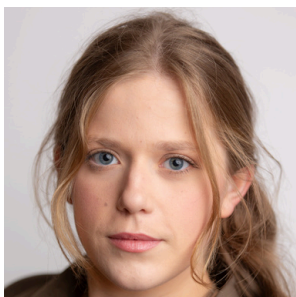


Seferino Ramirez Jr. (*Assistant Costume/Hair & Makeup Designer*) is so excited to be a part of this incredible production! Seferino is graduating in May with a Bachelor of Arts in Performing Arts with an emphasis in Theatre. He works currently in the School of Performing Arts Costume Shop and has for the past year. Previously, he designed costumes for Wichita State Music Theatre Company's production of *The Trail to Oregon!* and also was a part of the cast of *Peter and the Starcatcher*.



Ava Rivera (*Martha Bessell*) is excited to debut in their first production at Wichita State University! Previous credits include *Bright Star* (Free State High School), *The Prom* (Lawrence Art Center), and *School of Rock* (Lawrence Art Center). Ava is a first-year student at WSU pursuing a Bachelor of Fine Arts in Performing Arts with an emphasis in Musical Theatre. She is also an officer in Wichita State Music Theatre Company (WSMTC).

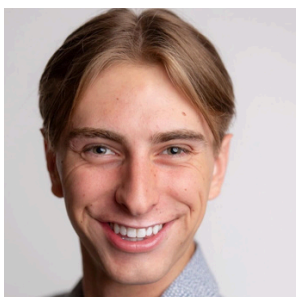
BIOGRAPHIES



Francie Robu (*Frau Gabor/Ensemble*) is currently in her fourth year at Wichita State University. She previously appeared on the WSU stage in *The Fox Sisters*, *Pippin*, *A Chorus Line*, and *Express*. Francie is glad she has been given another opportunity to perform with her friends and classmates. She will be graduating next fall with a Bachelor of Fine Arts in Performing Arts with an emphasis in Musical Theatre and Bachelor of Arts in Liberal Arts and Sciences with an emphasis in English Literature and is thrilled to see what opportunities come next.



Cat Sanders (*Ensemble*) is working their way through junior year at Wichita State University. Some of their favorite performances include *Express* (WSU), *Little Women* (Shawnee Mission Northwest Highschool), and *Urinetown* (Inspired Purpose Theatre). Cat is currently chipping away at a Bachelor of Fine Arts in Performing Arts with an emphasis in Musical Theatre and is hoping to refine their skills in not only theatre but also in life throughout their time at WSU.



Lucas Shroyer (*Ensemble*) is in his senior year at Wichita State University majoring in Bachelor of Fine Arts in Performing Arts with an emphasis in Musical Theatre and Bachelor of Arts in Performing Arts with an emphasis in Dance. He's done musicals with Wichita State University such as *Pippin*, *A Chorus Line*, *The Fox Sisters*, and *Express*. Along with dance shows such as *Move on Litwin* and multiple Wichita Contemporary Dance Theatre concerts. He has performed with organizations such as Ballet Wichita (*A Midsummer Night's Dream*), Okoboji Summer Theatre (*The Wedding Singer*), and Alithea Mime Theatre. A recent project of his was as co-music director for Wichita State Music Theatre Company's production of *The Trail to Oregon!* last spring. Throughout his performing arts journey, Lucas has also spent his time focusing on playing piano. You can find him as a barista at Starbucks as well as locally teaching dance classes.



Will Smith (*Assistant Technical Director*) is a 24-year-old transfer student from Katy Texas, currently finishing out a Bachelor of Fine arts in Performing Arts with an emphasis in Design and Technical Theatre with a minor in business. Will is an active member of the community both working in the scene shop at Wichita State University and being a current member of International Alliance of Theatrical Stage Employees Local 190 (IATSE). Will wants to thank the cast and crew of *Spring Awakening* for all of the hard work we have poured into this show. (Shout-out to my family love all y'all) Enjoy the show!!

BIOGRAPHIES



Gracie Solas (*Ensemble*) is excited to be a part of *Spring Awakening*! You may have seen them in the Jo Zakas Musical Theatre Incubator Program's production of *Express* as Gloria, but more consistently behind the scenes at Mosley Street Melodrama as a Stage manager and designer. Gracie is a second-year student studying a Bachelors of Fine Arts in Performing Arts with an emphasis in Musical Theatre and a certificate in Voice Acting. Gracie is the Company Manager of Wichita State Music Theatre Company (WSMTC) for the second year. Their mission within theatre is to "create a fun and professional theatre experience with a safe environment for all involved in the art."



Zeke Thompson (*Hanschen Rilow*) is very proud of the work this cast has done putting this show together. He feels this is an important show at such an important time. It takes a very special group of people to pull off a project like *Spring Awakening*. This is Zeke's first show at Wichita State University. He has spent a lot of time working at local theatre's such as Prairie Pines Playhouse and Forum Wichita. Last October, you may have seen him as Dracula in *Dracula: A Comedy of Terrors* at Roxy's Downtown.



Ya Mi Vang (*Props Coordinator*) is a first-year student getting her Bachelor of Fine Arts in Performing Arts with an emphasis in Design and Technical Theatre. Although her experience in technical theatre has expanded to different areas, *Spring Awakening* was a valuable new look at the world behind the scenes. She is thrilled to be a part of this transformative production, which explores the complexities of youth, identity, and self-discovery. Theatre is life!



Alyssa Watson (*Ensemble*) is a junior at Wichita State University, and this is her fifth production with the program. Some of her favorite shows she has been in are *The Drowsy Chaperone* (Shawnee Mission West High School), *A Chorus Line* (WSU), and *A Year With Frog and Toad* (The Culture House). Alyssa is pursuing a Bachelor of Fine Arts in Performing Arts with an emphasis in Musical Theatre, and is the Treasurer for Wichita State Musical Theatre Company (WSMTC); the student musical theatre organization.

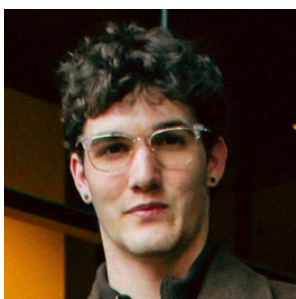
BIOGRAPHIES



Emma Whitney (*Anna*) is thrilled to be making her Wichita State University debut. She recently appeared as Margot in *Legally Blonde* (Gladstone Theatre in the Park). Emma is a senior studying a Bachelor of Arts in Communication Sciences & Disorders with minors in Musical Theatre, American Sign Language, Psychology, and University Honors. She was recently President of her sorority, Delta Gamma, and has been involved in Madrigal Choir and Shockapella at WSU.



Fio Willis (*Co-Scenic Designer*) has had the great honor of working alongside Leopold Porcaro in their first design. Fio also works as a carpenter and fabricator in the Wichita State University's School of Performing Arts Scene Shop. They have previously appeared onstage as Sebastian in *Twelfth Night* (Wichita State University) and Footnote in *Smokefall* (Empty Space Theatre). They are a second-year student at WSU pursuing a Bachelor of Arts in Performing Arts with an emphasis in Theatre and a minor in Art and Design. They hope to encourage empathy, introspection, and honesty through their art and beyond.



Jack Wilson (Moritz Stiefel) is making his Wichita State University theatrical debut. You might have previously seen him in *Hello, Dolly!* (Shawnee Mission Theatre in the Park), *Footloose* (Stage Right Performing Arts), or *Anything Goes!* (Olathe North High School). Jack is a second-year student pursuing a Bachelor of Arts in Music Education with a minor in Musical Theatre, and is a board member of WSU's branch of American Choral Directors Association (ACDA). Jack's goal as an artist is to foster a love for music and singing in future generations.



LIKE and FOLLOW



@wichitastatespa



@wsu_spa

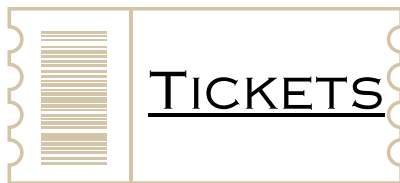


wichita.edu/spa

COMING SOON

THE ANGEL OF DEATH

MARCH 6-8, 2025



FILM DOUBLE FEATURE!

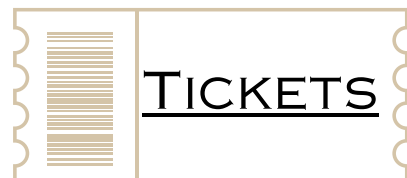
APRIL 19, 2025

IN FRAUD WE TRUST

NEW DANCE
FILM

IN FRAUD WE
TRUST+ NEW
DANCE FILM

APRIL 19, 2025





Music Theatre Wichita for rental of prop piano

Event System for providing rental of
sound equipment

Kent AV for rental and donation of lighting equipment

Harriet Hickman for her support in the orchestra and
guest artists

Katy Reko and Adia Tolbert for assisting with over hire
stitching in the costume shop

The Performing Arts Angels for all they do to support
SPA productions

School of Performing Arts Faculty and Staff
for everything

**ALFRED S. & ESTHER U PERRY ENDOWED
MEMORIAL SCHOLARSHIP IN FINE ARTS**

Lexye Collins
Delaney Davis
Nicholas Macias
Jesse Stephenson
Alyssa Watson

AUDREY NEEDLES SCHOLARSHIP FUND

Morgan Holcomb

BRETT NEFF MEMORIAL SCHOLARSHIP

Lynnaya McClure

**CHARLIE WHITWORTH THEATER
SCHOLARSHIP**

Imani Perkins

**DELORES AND CHARLES CRUM MAINSTAGE
THEATRE SCHOLARSHIP**

Trevor Andreason
Jordan Bodenhamer
Dylan Bray
Lena Castro
Alexis Driscoll
Morgan Holcomb
Liliana Jimenez
Ace La Valla
Sara Moore
Seferino Ramirez
Reuben Scheck
Makayla Lake
Fio Willis

**DR. FORREST E. RICHERT MEMORIAL
ENDOWED SCHOLARSHIP**

Alexandria Thanscheidt

ELEANOR DOTY CLAIR SCHOLARSHIP

Morgan Holcomb

**GEORGE D. WILNER ACHIEVEMENT AWARD
(SCHOLARSHIP)**

Lynnaya McClure

**HICKMAN SCHOLARSHIP PERFORMING ARTS
MUSICAL THEATRE**

Jyavon Hill
Francie Robu

**JANICE CHAMBERS RAMSEY
SCHOLARSHIP IN MUSICAL THEATRE**

Von Love
Gracie Solas

**JON AND KELLY CALLEN MUSICAL
THEATRE ENDOWED SCHOLARSHIP**

Lexye Collins

**JOYCE CAVAROZZI ENDOWED
SCHOLARSHIP IN THEATRE**

Lynnaya McClure

**JULIAENNE WEAVER MASTERS THEATRE
SCHOLARSHIP**

Imani Perkins

**JUNE M. LAIR ENDOWMENT FOR THE
ARTS (SCHOLARSHIP)**

Emily Flowers

**KIM STEPHENS MEMORIAL ENDOWMENT
FOR EXCELLENCE IN DANCE
(SCHOLARSHIP)**

Lille Nightingale

**LINDA STARKEY MUSICAL THEATRE
SCHOLARSHIP**

Lexye Collins

LULU BONAVIA DANCE SCHOLARSHIP

Rylee Ayon
Andrae Carter
Shawn Gordon
Olivia Lockwood
Cassidy McAllister
Sam Zimmerman

**MARCUS FAMILY ENDOWED
SCHOLARSHIP FOR EXCELLENCE IN THE
FINE ARTS**

Lille Nightingale

MARJORIE LOIS GRAHAM SCHOLARSHIP

Lynnaya McClure
Lille Nightingale
Lucas Shroyer

MARTHA M. FLEMING DANCE SCHOLARSHIP

Lille Nightingale

MARY JANE TEALL THEATRE SCHOLARSHIP

Morgan Holcomb
Seferino Ramirez Jr.

**MICKEY AND PETE ARMSTRONG
PERFORMING ARTS SCHOLARSHIP**

Kimmy Aguilar
Jacob Crabtree
Zoie Dangerfield

MILLER TRUST - COLLEGE OF FINE ARTS

Cooper Green
Alaycea Kremeier
Nicholas Macias
Lille Nightingale
Sam Zimmerman

MILLER TRUST - DRAMA

Elena Cianciolo
Lexye Collins
Gabriel Cornwell
Delaney Davis
Nicholas Dreier
Sean Gorman
Dani Little
Lynnaya McClure
Darby Parks
Leopold Porcaro
Ruby Quezada Valadez
Ava Rivera
Francie Robu
Lucas Shroyer
Ya Mi Vang
Alyssa Watson
Ava Wiechman

**PAMELA J. POSTIER PERFORMING ARTS
SCHOLARSHIP**

Olivia Lockwood

PATRONS OF MUSIC THEATRE

Gabriel Cornwell
Jyavon Hill

PERFORMING ARTS ANGELS

Colton Farmer
Skylar Lane
Annika Lindeman
Grace Ryan

**RANDAL M. JONES ENDOWED
SCHOLARSHIP**

Lexye Collins

**SCHAEFER, JOHNSON, COX, FREY &
ASSOCIATES, P.A. ENDOWED
SCHOLARSHIP**

Gracie Solas

**STEV OVERSTREET DEAN'S FUND IN FINE
ARTS**

Hayley Loya

TURTLE SCHOLARSHIP FOR DANCE

Alaycea Kremeier
Olivia Lockwood
Kaete Mokrynski

**VAN & VIRGINIA LEE FISER END MEM
/OPERA/MUSIC THEATRE**

Gabriel Cornwell
Von Love





The Kennedy Center

*The Kennedy Center American College Theater Festival, part of the Rubenstein Arts Access Program, is generously funded by **David M. Rubenstein**.*

Special thanks to The Harold and Mimi Steinberg Charitable Trust for supporting the John F. Kennedy Center for the Performing Arts' Kennedy Center American College Theater Festival.

Additional support is provided by The Honorable Stuart Bernstein and Wilma E. Bernstein; and the Dr. Gerald and Paula McNichols Foundation.

Kennedy Center education and related artistic programming is made possible through the generosity of the National Committee for the Performing Arts.

This production is entered in the Kennedy Center American College Theater Festival (KCACTF). The aims of this national theater education program are to identify and promote quality in college-level theater production. To this end, each production entered is eligible for a response by a regional KCACTF representative, and selected students and faculty are invited to participate in KCACTF programs involving scholarships, internships, grants and awards for actors, directors, dramaturgs, playwrights, designers, stage managers and critics at both the regional and national levels.

Productions entered on the Participating level are eligible for invitation to the KCACTF regional festival and may also be considered for national awards recognizing outstanding achievement in production, design, direction and performance.

Last year more than 1,500 productions were entered in the KCACTF involving more than 200,000 students nationwide. By entering this production, our theater department is sharing in the KCACTF goals to recognize, reward, and celebrate the exemplary work produced in college and university theaters across the nation.



The Performing Arts Angels exists to provide educational and training opportunities for talented dance, musical theatre, and theatre (performance and design/tech) students in the School of Performing Arts - opportunities not funded through the state or university.

The School of Performing Arts faculty, staff, and students recognize and deeply appreciate all your financial support. It allows us to fulfill our mission to educate and train students for a career in the arts and entertainment industry. To find out how you can become a Performing Arts Angel and support the School of Performing Arts students, please contact our office at 316-978-3078 or give online at www.wichita.edu/give.

We apologize in advance for any omission or errors in this list. Please bring corrections to the attention of Caleb Fouse at caleb.fouse@wichita.edu or 316-978-7266. Listings may shift from one program to another depending on the timing and receipt of gifts.

Giving for September 2023 - February 2025

PRODUCER (\$1,000 +)

Marty & Donna Perline
Michael Bayouth
Stev Overstreet
Sally Ottaway
Ed & Danette Baker
Gary Wood
Dennis & Genell Arnold
Anita Jones
Julie and Stan Longhofer
Mike & Susan Pompeo
Pete & Renea Goforth
Keith & Georgia Stevens
Marlene Hayes
Paul & Michelle Witte
Richard & Debra Campbell
Christine Kubik Living Trust
Lionel & Tammy Alford

DIRECTOR (\$500-\$999)

Pam Postier
Raymond & Diane Gans
Jerry Martin
Jane McHugh
Dee & Linda Starkey
Lance & Della Lickteig
Louise Brinegar and Gene Carr
Thom & Adrienne Rosenberg
Shoko Sevar
Kansas Dance Academy
John Fishpaw & Kimberly Krohn
Marie Bukowski

CHOREOGRAPHER (\$200-\$499)

Wes Henderson
Kelly & Tanja Harrison
Harriet Hickman

Performing Arts Angels

CONTINUED FROM PREVIOUS PAGE

CHOREOGRAPHER (\$200-\$499)

David Stone & Marni Vliet Stone
Bill & Pam Lappin
Wayne Bryan
Walter & Kaye Myers
Richard Muma & Rick Case
Steven & Kitchel Woods
Cheyla Clawson
Deborah Gafvert & Kenneth Gibbs
Nancy Anderson
Rodney Miller & Pina Mozzani
Groves Retail Liquor
Michael Klaassen & Gerri Colgan
Donna H. Ard Revocable Trust

DESIGNER (\$100-\$199)

Stephen Sowards & Jane Wilcox
Dean Cleverdon & Nancy Nyberg
Ken & Marilyn Pauly
Alan & Sharon Fearey
Hew & Judy Goodpasture
Anne Welsbacher
Deb Brinegar & John Diel
Lou & Mallory Medvene
Jeff Koch & Lesley Riddell-Koch
Ann Marie Siegwarth
Nathan Miller
Matt Fisher
Kathleen Moore

PERFORMER (\$25-\$99)

Ted & Debra Kimble
Rob Simon & Denise Jackson-Simon
Brian & Sarah Walden
Patrick & Sandra Hannon
Elizabeth Wine
Nadia Karim
Rob, Denise & Arri Simon Charitable Fund



*Thank you
Angels!*



SPA
SCHOOL of
PERFORMING ARTS

Performing Arts Angels

Everyone Can Be An Angel

Visit wichita.edu/give to become a member online with a credit card, or complete the form below, enclose a check (payable to the WSU Foundation/Performing Arts Angels) and send by mail to:
1845 Fairmount, Campus Box 2, Wichita, KS 67260.

- | | | |
|--------------------------|---------------|-----------|
| <input type="checkbox"/> | Producer | \$1,000+ |
| <input type="checkbox"/> | Director | \$500-499 |
| <input type="checkbox"/> | Choreographer | \$200-499 |
| <input type="checkbox"/> | Designer | \$100-199 |
| <input type="checkbox"/> | Performer | \$25-99 |

Contact Name: _____

Phone #: _____ Email: _____

Address: _____

City/State: _____ Zip Code: _____

Wichita.edu/give