



SPA
SCHOOL of
PERFORMING ARTS
PRESENTS

**2025 Bela Kiralyfalvi
National Student Playwriting Winner**

**NOW WE ARE
a HUNDRED**
a play by alaina tennant
directed by jane gabbert



\$20, \$18, \$12

**1 FREE STUDENT
TICKET W/ MYWSU ID
BOX OFFICE: 316.978.3233
WICHITA.UNIVERSITYTICKETS.COM**

**WELSBACHER THEATRE
SEPT 25 - 27 @ 7:30PM**



**WICHITA STATE
UNIVERSITY**

COLLEGE OF FINE ARTS



THE SCHOOL OF PERFORMING ARTS

PRESENTS

The Bela Kiralyfalvi National Student Playwriting Competition Winner

NOW WE ARE A HUNDRED

WRITTEN BY ALAINA TENNANT

DIRECTOR
Jane Gabbert

PLAYWRIGHT
Alaina Tennant

PRODUCTION COORDINATOR
Joseph Urick

ARTISTIC DIRECTOR/PRODUCER
Cheyly Clawson



Welcome to the 2025-26 Season

The School of Performing Arts welcomes you to its 2025–2026 season—a bold and vibrant celebration of storytelling through theatre, dance, film, and new works. Guided by our core values of **community, collaboration, creativity, courage**, and **curiosity**, this season we invite you into a dynamic journey of artistic growth and shared discovery.

Each production is part of a living **creative cycle**—a dynamic orbit around shared values that fuels growth, reflection, and renewal. Through production and dialogue, we explore the intersections of disciplines, generations, and perspectives, cultivating a continuum of artistic exploration and community innovation.



Student leadership is at the heart of our productions. From performance to production management, from design to direction, students take the lead—developing artistic vision, technical expertise, and collaborative skills that prepare them for professional careers and lifelong creative engagement.

This season is more than a series of events. From award-winning plays and musicals to student-led productions, from movement that speaks to films that linger, we invite you to co-create, connect, and be inspired.

Thank you for joining us in the creative cycle and being a part of our transformation.

Cheyra Clawson

Director of the School of Performing Arts

The Wichita State University National Playwriting Contest was created in 1974 by Bela Kiralyfalvi, Ph.D., Theatre Professor and Director of the School of Performing Arts who retired in 2003. In 2022, the School of Performing Arts renamed the competition to the Bela Kiralyfalvi National Student Playwriting Competition in his honor. This annual competition seeks to celebrate and amplify the voices of undergraduate playwrights nationwide.

In 2024, Bela passed away at the age of 87. He will be missed but his passion for theatre and enthusiasm for teaching will live on through past students, alumni, faculty, staff, friends, and family.

"Teaching has always been exciting and interesting. I've enjoyed learning and understanding things better through the process. I joke with students when they are getting ready to graduate after four or five years. They'll say, 'Oh I am going to be so glad to get out of here.' I tell them, 'You know, I've spent 45 years in college, and I still haven't left.' And it's true you never cease to be a student. If you cease to be a student, you will not be a good teacher." - **Bela Kiralyfalvi**

Alaina Tennant, a young playwright and creative from Akron, Ohio, is the most recent playwright to be named a winner of the Bela Kiralyfalvi National Student Playwriting Competition for her original full-length play, *Now We Are A Hundred*. The play is a poetic and emotionally rich historical drama set in post-WWII England. The story imagines a fictional reckoning between Christopher Robin Milne and his father, A.A. Milne-the creator of Winnie-the-Pooh. Through haunting dialogue and complex character dynamics, the play explores the emotional weight of literary fame, memory, and the search for personal identity amidst inherited legacy.

Tennant's work is deeply rooted in history and human complexity. "We can't understand where we might be going if we don't look back on where we've been," she writes. "The past mirrors the present. The past predicts the future." Her plays often center on family, memory, and the search for identity within the echoes of personal and collective history.

For more information about the Bela Kiralyfalvi National Student Playwriting Competition and Alaina Tennant, visit: www.wichita.edu/playwright



WICHITA STATE UNIVERSITY
**BELA KIRALYFALVI NATIONAL STUDENT
PLAYWRITING
COMPETITION**

The Wichita State University National Playwriting Contest was created in 1974 by Bela Kiralyfalvi, Ph.D., Theatre Professor and Director of the School of Performing Arts who retired in 2003. In 2022, the School of Performing Arts renamed the competition to the Bela Kiralyfalvi National Student Playwriting Competition in his honor.

Bela Kiralyfalvi was born in Balkány, Hungary, on September 11, 1937, to Lajos Kiralyfalvi and Erzsebet Antal Kiralyfalvi. Bela's early life was shaped by significant European geopolitical events. In 1945, he survived an Allied bombing while visiting an aunt in Budapest. He worked in his father's tavern after World War II. In the 1950s, after his father lost the tavern, he worked at a bank and supported his brothers and parents.

When the Hungarian Revolution broke out in October 1956, Bela participated by reciting the poem Nemzeti dal ("National Song") by Hungarian poet Sándor Petöfi before a crowd at the Balkány City Hall. When the Soviet Union crushed the rebellion in November 1956, Bela and his best friend, Imre Ban, fled Hungary for Austria and then the United States, where his aunt Ida Harvath lived on Long Island, New York.

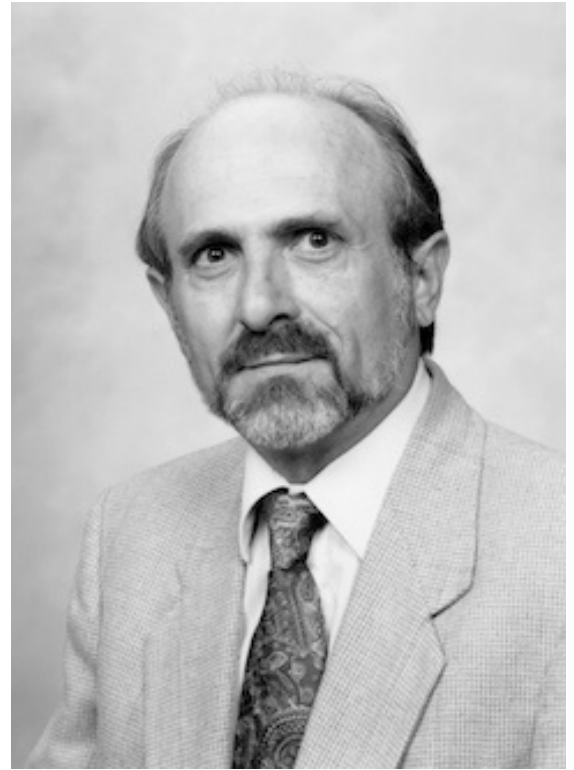
Bela spent about three years working in New York until his friend, Imre, convinced him to attend Phillips University in Enid, Oklahoma, which offered scholarships for Hungarian refugees. Bela began studying philosophy and drama with the intention of becoming a college professor. At Phillips University, Bela learned about every trade from lighting and set design to directing and makeup, which he says made him a much better teacher and director. After earning his master's and doctorate from the University of Kansas, he developed specialties in theater history and dramatic literature.

Bela taught performing arts at Saint Mary's College in Leavenworth, Kansas, and at Parsons College in Fairfield, Iowa, eventually joining Wichita State University, where he became chair of the Speech Communications Department. At WSU Kiralyfalvi taught acting, playscript analysis, playwriting and developed an improvisation course. In 1974, as a theatre professor, he created "The Wichita State University National Playwriting Contest." He went on to become the Director of the School of Performing Arts and retired in 2003. Yet, he claimed his most satisfying highlight was simply being a teacher.

"Teaching has always been exciting and interesting. I've enjoyed learning and understanding things better through the process. I joke with students when they are getting ready to graduate after four or five years. They'll say, 'Oh I am going to be so glad to get out of here.' I tell them, 'You know, I've spent 45 years in college, and I still haven't left.' And it's true you never cease to be a student. If you cease to be a student, you will not be a good teacher." - **Bela Kiralyfalvi**

In Memorium – In 2024, Bela passed away at the age of 87. He will be missed but his passion for theatre and enthusiasm for teaching will live on through past students, alumni, faculty, staff, friends, and family.

"As a WSU graduate student, I learned so much from Dr. Kiralyfalvi. I was also a winner of the WSU National Student Playwriting Contest that he created when he served Chair of the School of Performing Arts. After I began teaching Theatre for WSU, I had the honor of serving as administrator of this contest and during that time, the Theatre Faculty agreed to rename the contest as WSU Bela Kiralyfalvi National Playwriting Competition. This contest is entering into its 50th year and offers emerging, student writers from all universities across the opportunity that may not have been available previously if Bela hadn't brought this contest to fruition. He was an incredible educator. He was an incredible person. He'll be sorely missed." - **Jeannine Saunders Russell**



"Bela was one of the kindest, most beautiful souls ever to grace us with his presence. I will always remember and cherish his sparkling wit, his brilliant intellect, his loving support and friendship, and his passion for life and all things theatrical. Heartfelt condolences to his beautiful wife Marthena, and to his lovely family. We have lost a gentleman and scholar of the highest order, and he will be so greatly missed." - **Denise Celestin**

"Bela directed and produced the deepest (and sometimes darkest) plays that we did at WSU in the 1980's. Having just read his obituary and learning more about his personal history, I now better understand how he reached into scripts and revealed the real emotions and stories of characters who lived hard lives and still found life worthy of pursuit. I'm sorry I didn't know him better when I had the chance; he was a fascinating person, passionate about theater and playwriting, and a thoughtful man. He made a difference and I'm grateful for his contributions in our theater program." - **Jessie Gray**



WICHITA STATE UNIVERSITY
**BELA KIRALYFALVI NATIONAL STUDENT
PLAYWRITING
COMPETITION**

RUN OF SHOW

PROLOGUE	Young Christopher, A.A. Milne
SCENE ONE	Christopher Milne, A.A. Milne, Young Christopher
SCENE TWO	Christopher Milne, A.A. Milne, Young Christopher
SCENE THREE	Christopher Milne, A.A. Milne, Young Christopher
SCENE FOUR	Christopher Milne, Young Christopher
SCENE FIVE	Christopher Milne, A.A. Milne, Young Christopher
SCENE SIX	Christopher Milne, A.A. Milne, Young Christopher
SCENE SEVEN	A.A. Milne, Christopher Milne, Young Christopher
SCENE EIGHT	Christopher Milne, A.A. Milne



LIKE and FOLLOW



@wichitastatespa



@wsu_spa



wichita.edu/spa

CAST

NARRATOR	KELSI HARRIS
CHRISTOPHER	COLTON FARMER
YOUNG CHRISTOPHER	DOT MCMILLEN
A.A.MILNE	JORDAN BODENHAMER
UNDERSTUDY	HANNAH BRADY
UNDERSTUDY	PEYTON GRACE HENDERSON
UNDERSTUDY	SEBASTIAN MCGINTY- KINDERKNECHT

CREATIVE TEAM

DIRECTOR	JANE GABBERT
PLAYWRIGHT	ALAINA TENNANT
PRODUCTION COORDINATOR, POSTER DESIGN	JOSEPH URICK
LIGHTING	LENA CASTRO
LIGHTING	RUBY QUEZADA VALADEZ
DIRECTOR OF SPA/ARTISTIC DIRECTOR/PRODUCER	CHEYLA CLAWSON

BIOGRAPHIES



Jane Gabbert (*Director*) received her Bachelor of Arts in Liberal Arts with an emphasis in Theatre from Wichita State University, then went on to receive her Master of Fine Arts from Ohio University. She studied with the beloved Dr. Richard Welsbacher, Mary Jane Teall, Joyce Cavarozzi, Audrey Needles, and Bela Kiralyfalvi. She also is an acting student of New York City acting teacher Charlie Kakatsakis. Gabbert's film credits include *Sully*, w/Tom Hanks & Dir. Clint Eastwood, 10 episodes as "Dave's Nurse" on *Late Night* w/David Letterman, *Search Party* (5 seasons MAX), *Jack Ryan*, *Late Night* with Seth Meyers, *The Daily Show*, *Indies - Closer to Home*, ABC's *Unspeakable Acts* w/Bebe Neuwirth, and *Daytime – All My Children & Loving*. Off-Broadway credits include *Mama & Baby* w/June Squibb (Women's Interart Theatre), *MAX* w/Barney Martin (South St. Theatre). *Apollo* from Bellac (Public Theatre), *Giggle & Scream* (Circle Rep Lab), *A Late Snow* (Houseman Theatre), *Honor Bright* (McGinn-Cazale Theatre), *Big, Fat & Ugly* (Perry St. Theatre), and *Love Song for Chairman Mao* (Triangle Theatre). Sketch comedy on *The Daily Show* and 2 episodes for *The Chair Company* (HBO Max) with Tim Robinson. Some of Gabbert's regional theatre credits include Milwaukee Repertory, Asolo & Geva theatres, Penn Stage Co., Monomoy Summer Theatre. She was also a Guest Artist in residence at Cornell University, Case Western Reserve. Mid-Pac Institute, Honolulu, HI.



Alaina Tennant (*Playwright*) is a native of Akron, Ohio, and is currently completing her Bachelor of Fine Arts degree in playwriting at Ohio University. Her growing body of work has already earned national attention: in 2024, she won the Thespian Excellence Award (Thespys) for her play *Freiheit*, which was showcased at both the regional and state Ohio Thespian Conferences. A monologue from *Freiheit* will be featured in Smith & Kraus' 2025 Best Men's Stage Monologues, and the script was also named runner-up in the YouthPLAYS New Voices Competition. Her adaptation of *Wings* received a workshop production at Ohio University and was recognized as a Semi-Finalist in The Blank Theatre's Young Playwrights Festival. Additionally, her 10-minute play *Liberation* was a Semi-Finalist in the Jewish Plays Project's Ten Minute Play Festival: *OOF! On One Foot*.



Jordan Bodenhamer (*A. A. Milne*) is excited to be a part of this production. Most recently he was found delighting Lindsborg audiences on stage in Broadway RFD's summer production of *The Music Man* and in the film *Edge of Oblivion* (Shocker Studios). He has also performed internationally as a dancer and fiddler for the Lindsborg Swedish Folk Dancers. Jordan is a sophomore pursuing his Bachelor of Fine Arts in acting and is a member of Wichita State University's Fight Club. Jordan loves the art of storytelling and hopes to make a positive impact on the world through his performances.



Hannah Brady (*Understudy*) is excited to be in the reading *Now We Are a Hundred*. She recently performed as Pugsley in *The Addams Family* (Campus High School) and is currently working towards her Bachelor of Arts with an emphasis in acting at Wichita State University. She loves theatre and can't wait to do more.

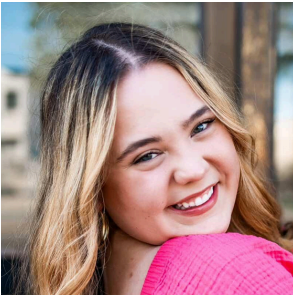
BIOGRAPHIES



Colton Farmer (*Christopher*) is thrilled to be returning to the Wichita State University stage! Previous credits include *Twelfth Night* (Wichita State University), *She Kills Monsters* (Empty Space Theatre), and *Charley's Aunt* (Kechi Playhouse). Colton is currently pursuing a Bachelor of Fine Arts in acting at WSU. He gives thanks to the entire cast, crew, and creative team behind this production, to guest director Jane Gabbert, to playwright Alaina Tennant for sharing this story, and to his family and friends for their constant support. Enjoy the show!



Kelsi Harris (*Narrator*) is a junior transfer student pursuing a Bachelor of Fine Arts in acting at Wichita State University. You may recognize them from *Twelfth Night* (Wichita State University) or from the projects they have been involved with around the community. They were most recently in Kechi Playhouse's productions of *Charley's Aunt* and *Much Ado About Nothing* as well as Wichita Shakespeare Company's production of *Romeo and Juliet*. They hope you enjoy the show!



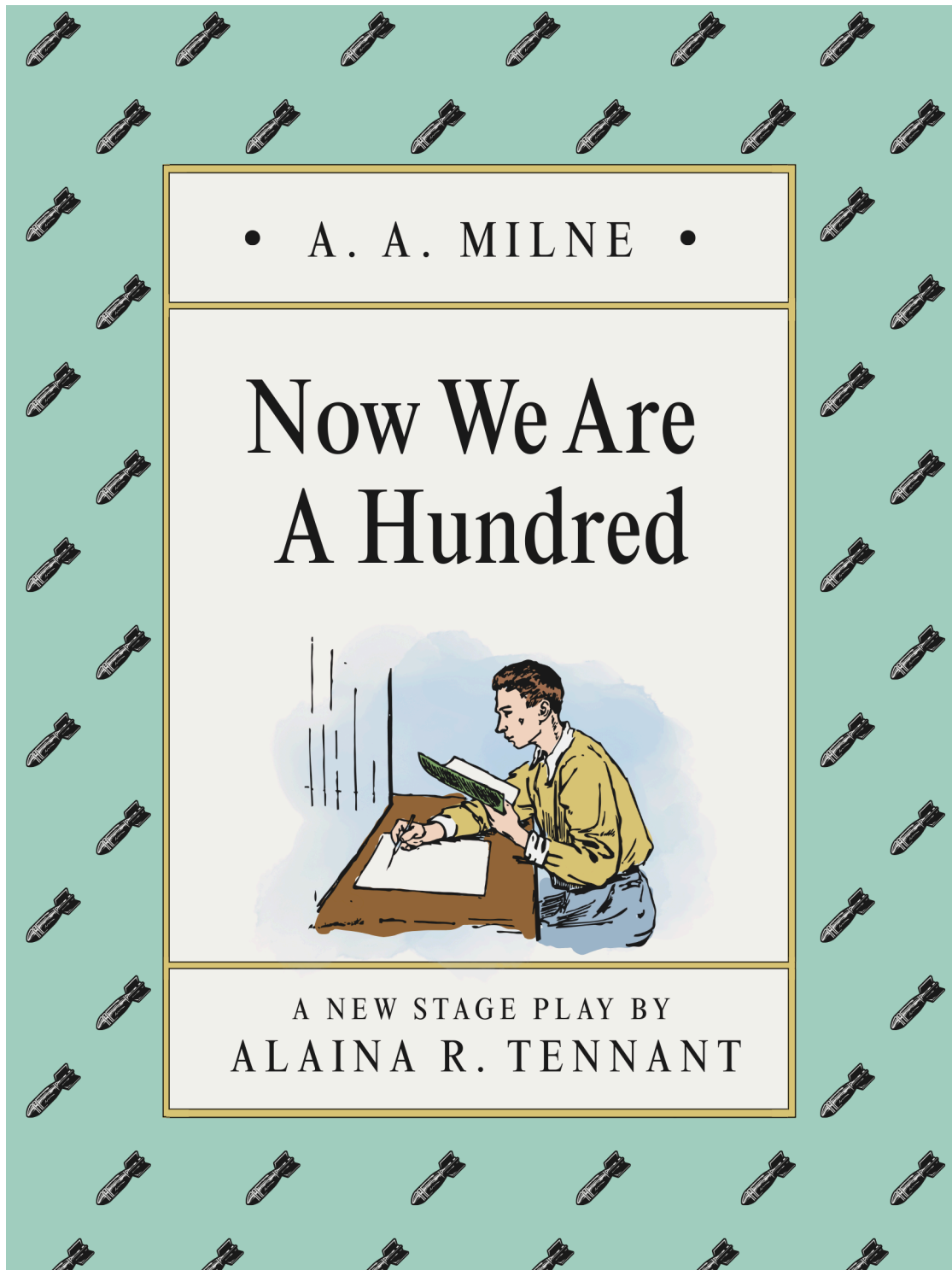
Peyton Grace Henderson (*Understudy*) is most known for her role as Minnie Fay in *Hello, Dolly!* and Jane Seymour in *SIX: Teen Edition*. She grew up performing around Wichita, now pursuing her Bachelor of Fine Arts in acting with a minor in musical theatre from Wichita State University.



Sebastian McGinty-Kinderknecht (*Understudy*) is a freshman at Wichita State University (WSU), pursuing a Bachelor of Fine Arts in acting. He is excited to be in *Now We Are a Hundred* and performing in *Company*. Sebastian has been in theatre for 5 years, starting at Smoky Valley High School, and now attends WSU. He is nervous about the future, but ready to pursue his dream in acting.



Dot McMillin (*Young Christopher*) is currently a first year Bachelor of Fine Arts in musical theatre at Wichita State University. Some of her recent roles are Patty Simcox in *Grease*, Elizabeth in *Pride and Prejudice*, and Mrs. Banks in *Mary Poppins*. She has many years of dance and vocal training and has taken many acting classes. She hopes to continue performing in many more shows and looks forward to sharing her talents with you.



“If you live to be a hundred, I hope to live to be a hundred minus one day so I never have to live without you.”

-A.A. Milne

COMING SOON

COMPANY
NOVEMBER 12-16,
2025 @ 7:30PM
& NOVEMBER 15-16,
2025 @ 2PM



CAPSTONE
CELEBRATION
NOVEMBER 22,
2025 @ 7:30PM

**ALFRED S. & ESTHER U PERRY ENDOWED
MEMORIAL SCHOLARSHIP IN FINE ARTS**

Rylee Ayon
Lexye Collins
Mia Dennett
Jyavon Hill
Makayla Lake
Skylar Lane
Alyssa Watson

BRETT NEFF MEMORIAL SCHOLARSHIP

Leopold Porcaro

**DELORES AND CHARLES CRUM MAINSTAGE
THEATRE SCHOLARSHIP**

Trevor Andreasen
Lena Castro
Mia Dennett
Colton Farmer
Emily Flowers
Blake Grimsley
Liliana Jimenez
Ace La Valla
Salima Lahbabi
Makayla Lake
Dani Little
Sara Moore
Leopold Porcaro
Ruby Quezada Valadez

**HICKMAN SCHOLARSHIP PERFORMING ARTS
MUSICAL THEATRE**

Jyavon Hill

**JAMES AND CATHERINE BUCK CHARITABLE
TRUST CURRENT SCHOLARSHIP IN FINE ARTS**

Charisma Brown
Makayla Lake

**JANICE CHAMBERS RAMSEY SCHOLARSHIP
IN MUSICAL THEATRE**

Jyavon Hill
Von Love
Gracie Solas

**JON AND KELLY CALLEN MUSICAL
THEATRE ENDOWED SCHOLARSHIP**

Lexye Collins

**JOYCE CAVAROZZI ENDOWED
SCHOLARSHIP IN THEATRE**

Skylar Lane

**JUNE M. LAIR ENDOWMENT FOR THE
ARTS (SCHOLARSHIP)**

Ace La Valla

**KARLA BURNS MEM. SCHOLARSHIP FOR
PERFORMING ARTISTS**

Kaete Mokrynski

**KIM STEPHENS MEMORIAL ENDOWMENT
FOR EXCELLENCE IN DANCE
(SCHOLARSHIP)**

Cassidy McAllister

**KIRBY'S STEVE SCHROEDER MEMORIAL
SCHOLARSHIP/FELLOWSHIP**

Jyavon Hill
Grace Jerke

**LINDA STARKEY MUSICAL THEATRE
SCHOLARSHIP**

Lexye Collins
Ava Rivera

LULU BONAVIA DANCE SCHOLARSHIP

Maria Contreras Negrete
Shawn Gordon
Nicholas Macias

**MARCUS FAMILY ENDOWED
SCHOLARSHIP FOR EXCELLENCE IN THE
FINE ARTS**

Cooper Green

MARJORIE LOIS GRAHAM SCHOLARSHIP

Rylee Ayon
Sean Gorman
Kelsi Harris
Cassidy McAllister
Grace Ryan

MARTHA M. FLEMING DANCE SCHOLARSHIP

Kaete Mokrynski

MARY JANE TEALL THEATRE SCHOLARSHIP

Jordan Bodenhamer

**MICKEY AND PETE ARMSTRONG
PERFORMING ARTS SCHOLARSHIP**

Kimberly Aguilar

Zoie Dangerfield

Chloe Navarro

MILLER TRUST - COLLEGE OF FINE ARTS

Cooper Green

Macie-Athena Johnson

Annika Lindeman

Cassidy McAllister

Kaete Mokrynski

Lucas Shroyer

Samantha Zimmerman

MILLER TRUST - DRAMA

Elena Cianciolo

Gabriel Cornwell

Jacob Crabtree

Nicholas Dreier

Emily Flowers

Sean Gorman

Payton Grace Henderson

Makayla Lake

Leopold Porcaro

Ava Rivera

Grace Ryan

Jesse Stephenson

Ava Wiechman

**PAMELA J. POSTIER PERFORMING ARTS
SCHOLARSHIP**

Samantha Zimmerman

AUDREY NEEDLES SCHOLARSHIP FUND

Sean Gorman

**DR. FORREST E. RICHERT MEMORIAL
ENDOWED SCHOLARSHIP**

Dylan Bray

ELEANOR DOTY CLAIR SCHOLARSHIP

Colton Farmer

PERFORMING ARTS ANGELS

Hannah Brady

Garth Carey

Grace Jerke

Salima Lahbabi

**RANDAL M. JONES ENDOWED
SCHOLARSHIP**

Kelsi Harris

Leopold Porcaro

**SCHAEFER, JOHNSON, COX, FREY &
ASSOCIATES, P.A. ENDOWED
SCHOLARSHIP**

Gracie Solas

**STEV OVERSTREET DEAN'S FUND IN
FINE ARTS**

Elena Cianciolo

Jyavon Hill

TURTLE SCHOLARSHIP FOR DANCE

Rylee Ayon

**VAN & VIRGINIA LEE FISER ENDOWED
MEMORIAL - OPERA/MUSIC THEATRE**

Gabriel Cornwell

**GEORGE D. WILNER ACHIEVEMENT
AWARD (SCHOLARSHIP)**

Kelsi Harris

**JULIAENNE WEAVER MASTERS THEATRE
SCHOLARSHIP**

Blake Grimsley





WICHITA STATE
UNIVERSITY

SPA SCHOOL of
PERFORMING ARTS

Performing Arts Pathway

for
High School Juniors and Seniors

Start earning college credit and train with professionals
in acting, dance, design/technology, musical theatre,
and theatre - while still in high school!

Your Passion. Your Future.

Acting

- Acting Methods for stage, film, & voiceover
- Voice & Movement Techniques
- Improvisation

Dance

- Contemporary, Ballet, Jazz, Hip Hop, & Tap
- Dance Appreciation
- Dance Theory

Design & Technology

- Lighting & Electrics
- Costumes & Wardrobe
- Stagecraft

Musical Theatre

- Acting Methods for stage, film, & voiceover
- Script Analysis
- Contemporary, Ballet, Jazz, Hip Hop, & Tap

Theatre Studies

- Overview of Theatre
- Foundations in all areas
- Broad range of options

Why Choose This Pathway?

- Earn College Credit at a Reduced Rate
- FREE attendance to WSU Performances
- Prepare for College Auditions
- Explore Career Paths with Expert Mentors

Learn More



START YOUR ARTISTIC JOURNEY TODAY!



performingarts@wichita.edu



wichita.edu/performingartspathway



concurrent@wichita.edu



wichita.edu/dual

Apply Now





The Performing Arts Angels exists to provide educational and training opportunities for talented acting, dance, design/technology, musical theatre, and theatre studies students in the School of Performing Arts - opportunities not funded through the state or university.

The School of Performing Arts faculty, staff, and students recognize and deeply appreciate all your financial support. It allows us to fulfill our mission to educate and train students for a career in the arts and entertainment industry. To find out how you can become a Performing Arts Angel and support the School of Performing Arts students, please contact the foundation at 316-978-3078 or give online at www.wichita.edu/give.

*Thank you
Angels!*



Performing Arts Angels

Everyone Can Be An Angel

Visit wichita.edu/give to become a member online with a credit card, or complete the form below, enclose a check (payable to the WSU Foundation/Performing Arts Angels) and send by mail to:
1845 Fairmount, Campus Box 2, Wichita, KS 67260.

- | | |
|--|-----------|
| <input type="checkbox"/> Producer | \$1,000+ |
| <input type="checkbox"/> Director | \$500-499 |
| <input type="checkbox"/> Choreographer | \$200-499 |
| <input type="checkbox"/> Designer | \$100-199 |
| <input type="checkbox"/> Performer | \$25-99 |

Contact Name: _____

Phone #: _____ Email: _____

Address: _____

City/State: _____ Zip Code: _____

Wichita.edu/give