

Wichita State University School of Performing Arts

presents the

50th Anniversary of the Bela Kiralyfalvi Playwriting Competition Winner

The Angel of Death

by Amanda Schmalzried

March 6-8, 2025
7:30 PM

Welsbacher Theater

\$15 general admission

1 Free Student Ticket with MyWSU ID

Box Office: 316.978.3233

wichita.universitytickets.com



WICHITA STATE
UNIVERSITY



THE SCHOOL OF PERFORMING ARTS

PRESENTS

The 50th Anniversary Bela Kiralyfalvi National Student Playwriting Competition Winner

THE ANGEL OF DEATH

WRITTEN BY AMANDA SCHMALZRIED

DIRECTOR
Jane Gabbert

PLAYWRIGHT
Amanda Schmalzried

ASSISTANT DIRECTOR
Ian Moore

PRODUCTION
COORDINATOR
Sheldon Mba

TECHNICAL
DIRECTOR
Ed Baker

ARTISTIC DIRECTOR/
PRODUCER
Cheyly Clawson

Note: *The Angel of Death* contains adult language and references to references drug use, child abuse, serial killing, violence, and homicide.



THE
TRUST COMPANY
OF KANSAS

The Wichita State University National Playwriting Contest was created in 1974 by Bela Kiralyfalvi, Ph.D., Theatre Professor and Director of the School of Performing Arts who retired in 2003. In 2022, the School of Performing Arts renamed the competition to the Bela Kiralyfalvi National Student Playwriting Competition in his honor.

Bela Kiralyfalvi was born in Balkány, Hungary, on September 11, 1937, to Lajos Kiralyfalvi and Erzsebet Antal Kiralyfalvi. Bela's early life was shaped by significant European geopolitical events. In 1945, he survived an Allied bombing while visiting an aunt in Budapest. He worked in his father's tavern after World War II. In the 1950s, after his father lost the tavern, he worked at a bank and supported his brothers and parents.

When the Hungarian Revolution broke out in October 1956, Bela participated by reciting the poem Nemzeti dal ("National Song") by Hungarian poet Sándor Petöfi before a crowd at the Balkány City Hall. When the Soviet Union crushed the rebellion in November 1956, Bela and his best friend, Imre Ban, fled Hungary for Austria and then the United States, where his aunt Ida Harvath lived on Long Island, New York.

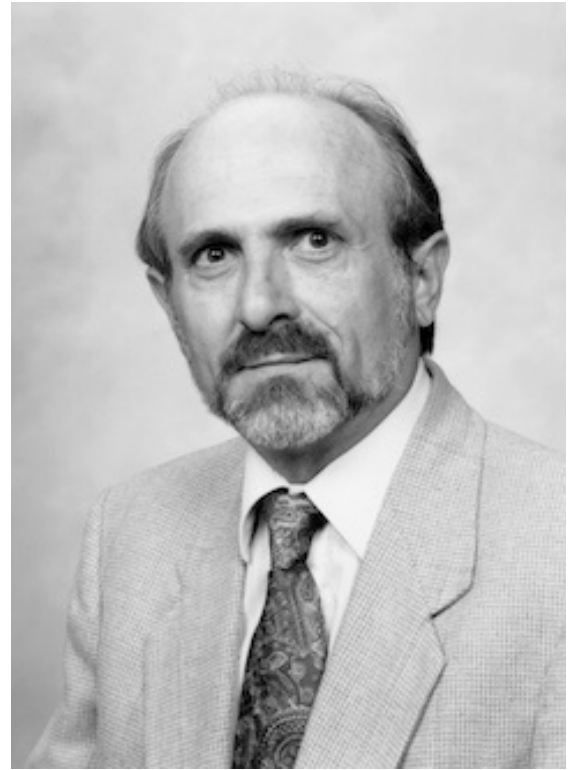
Bela spent about three years working in New York until his friend, Imre, convinced him to attend Phillips University in Enid, Oklahoma, which offered scholarships for Hungarian refugees. Bela began studying philosophy and drama with the intention of becoming a college professor. At Phillips University, Bela learned about every trade from lighting and set design to directing and makeup, which he says made him a much better teacher and director. After earning his master's and doctorate from the University of Kansas, he developed specialties in theater history and dramatic literature.

Bela taught performing arts at Saint Mary's College in Leavenworth, Kansas, and at Parsons College in Fairfield, Iowa, eventually joining Wichita State University, where he became chair of the Speech Communications Department. At WSU Kiralyfalvi taught acting, playscript analysis, playwriting and developed an improvisation course. In 1974, as a theatre professor, he created "The Wichita State University National Playwriting Contest." He went on to become the Director of the School of Performing Arts and retired in 2003. Yet, he claimed his most satisfying highlight was simply being a teacher.

"Teaching has always been exciting and interesting. I've enjoyed learning and understanding things better through the process. I joke with students when they are getting ready to graduate after four or five years. They'll say, 'Oh I am going to be so glad to get out of here.' I tell them, 'You know, I've spent 45 years in college, and I still haven't left.' And it's true you never cease to be a student. If you cease to be a student, you will not be a good teacher." - **Bela Kiralyfalvi**

In Memorium – In 2024, Bela passed away at the age of 87. He will be missed but his passion for theatre and enthusiasm for teaching will live on through past students, alumni, faculty, staff, friends, and family.

"As a WSU graduate student, I learned so much from Dr. Kiralyfalvi. I was also a winner of the WSU National Student Playwriting Contest that he created when he served Chair of the School of Performing Arts. After I began teaching Theatre for WSU, I had the honor of serving as administrator of this contest and during that time, the Theatre Faculty agreed to rename the contest as WSU Bela Kiralyfalvi National Playwriting Competition. This contest is entering into its 50th year and offers emerging, student writers from all universities across the opportunity that may not have been available previously if Bela hadn't brought this contest to fruition. He was an incredible educator. He was an incredible person. He'll be sorely missed." - **Jeannine Saunders Russell**



"Bela was one of the kindest, most beautiful souls ever to grace us with his presence. I will always remember and cherish his sparkling wit, his brilliant intellect, his loving support and friendship, and his passion for life and all things theatrical. Heartfelt condolences to his beautiful wife Marthena, and to his lovely family. We have lost a gentleman and scholar of the highest order, and he will be so greatly missed." - **Denise Celestin**

"Bela directed and produced the deepest (and sometimes darkest) plays that we did at WSU in the 1980's. Having just read his obituary and learning more about his personal history, I now better understand how he reached into scripts and revealed the real emotions and stories of characters who lived hard lives and still found life worthy of pursuit. I'm sorry I didn't know him better when I had the chance; he was a fascinating person, passionate about theater and playwriting, and a thoughtful man. He made a difference and I'm grateful for his contributions in our theater program." - **Jessie Gray**



WICHITA STATE UNIVERSITY
**BELA KIRALYFALVI NATIONAL STUDENT
PLAYWRITING
COMPETITION**

RUN OF SHOW

SCENE ONE

ALICIA, DAMIEN

SCENE TWO

ALICIA, DEADBEAT DAD

SCENE THREE

COMPANY

SCENE FOUR

DAD, ALICIA, DAMIEN

SCENE FIVE

DAMIEN, ALICIA



LIKE and FOLLOW



@wichitastatespa



@wsu_spa



wichita.edu/spa

CAST

ALICIA	STEVIE LONGACRE
DAMIEN	SEAN GORMAN
DEADBEAT DAD	IAN MOORE
MOTHER	MORGAN HOLCOMB
NARRATOR	FIO WILLIS
UNDERSTUDY	AUBREY JOHNSON
UNDERSTUDY	ISRAEL CARRENO
UNDERSTUDY	SARA MOORE

CREATIVE TEAM

DIRECTOR	JANE GABBERT
ASSISTANT DIRECTOR	IAN MOORE
PLAYWRIGHT	AMANDA SCHMALZRIED
PRODUCTION COORDINATOR	SHELDON MBA
TECHNICAL DIRECTOR	ED BAKER
LIGHTING	LENA CASTRO
LIGHTING	RUBY QUEZADA VALADEZ
DIRECTOR OF SPA/ARTISTIC DIRECTOR/PRODUCER	CHEYLA CLAWSON

BIOGRAPHIES



Jane Gabbert (*Director*) received her Bachelor of Arts in Liberal Arts with an emphasis in Theatre from Wichita State University, then went on to receive her Master of Fine Arts from Ohio University. She studied with the beloved Dr. Richard Welsbacher, Mary Jane Teall, Joyce Cavarozzi, Audrey Needles, and Bela Kiralyfalvi. She also is an acting student of New York City acting teacher Charlie Kakatsakis. Gabbert's film credits include *Sully*, w/Tom Hanks & Dir. Clint Eastwood, 10 episodes as "Dave's Nurse" on *Late Night* w/David Letterman, *Search Party* (5 seasons MAX), Jack Ryan, *Late Night* with Seth Meyers, *The Daily Show*, *Indies - Closer to Home*, ABC's *Unspeakable Acts* w/Bebe Neuwirth, and *Daytime – All My Children & Loving*. Off-Broadway credits include *Mama & Baby* w/June Squibb (Women's Interart Theatre), *MAX* w/Barney Martin (South St. Theatre). *Apollo* from Bellac (Public Theatre), *Giggle & Scream* (Circle Rep Lab), *A Late Snow* (Houseman Theatre), *Honor Bright* (McGinn-Cazale Theatre), *Big, Fat & Ugly* (Perry St. Theatre), and *Love Song for Chairman Mao* (Triangle Theatre). Some of Gabbert's regional theatre credits include Milwaukee Repertory, Asolo & Geva theatres, Penn Stage Co., Monomoy Summer Theatre. She was also a Guest Artist in residence at Cornell University, Case Western Reserve. Mid-Pac Institute, Honolulu, HI.

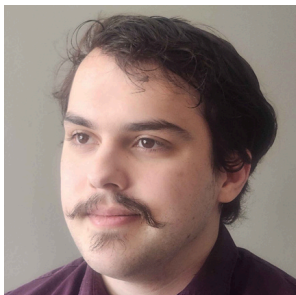


Israel Carreno (*Understudy*) has spent this rehearsal process as one of the understudies. Previously, he has appeared in *Twelfth Night* (Wichita State University), *Peter and the Starcatcher* (WSU), and *The Trail to Oregon!* (Wichita State Music Theatre Company). Israel is a sophomore pursuing a Bachelor of Fine Arts in Performing Arts with an emphasis in Theatre Performance and a minor in Musical Theatre. He is a member of the Wichita State Musical Theatre Company (WSMTC). Israel's mission as an artist is "to inspire others and to have a positive impact on the world."

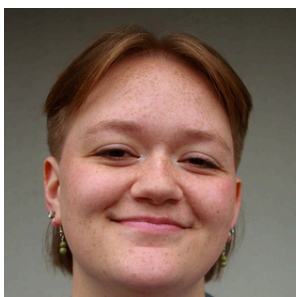


Cheyla Clawson, MA, MFA (*Director of SPA/Artistic Director/Producer*) is an Associate Professor of Dance and the Director of the School of Performing Arts at Wichita State University. Chandler's modern dance research is focused on Horton Technique, and she attended the Horton Dance Technique Certificate Program 2013-2020 at The Ailey School in New York City. Her two duets, *Anam Chara* (2014) and *nosuchSymbiosis* (2016) were invited to The American College Dance Association National Festival at The Kennedy Center in Washington, D.C. Cheyla presented her latest research focused on community integration curriculum in dance performance degrees at The International Arts in Society conference in June 2022 (Australia), gave a workshop on Dance and Diversity, Equity, and Inclusion for the American College Dance Association online National Workshop series in March of 2021 as well as community-based intergenerational research at The American Dance Symposium in NYC in January of 2023. At WSU, Cheyla is a member of the Student Success and Persistence Coalition, the President's Inclusive Council, and the University Assessment Committee. She is also a chair of the College of Fine Arts Committee for Inclusive Excellence and is a doctoral candidate in the Educational Leadership Program. Beyond WSU, Cheyla is a Policy Board Member for the National Dance Education Organization.

BIOGRAPHIES



Sean Gorman (*Damien*) is a current student pursuing a Bachelor of Arts in Performing Arts with an emphasis in Theatre at Wichita State University. He has been in several shows including *Smokefall*, *The Lightning Thief: A Percy Jackson Musical*, and *Noises Off*. He would like to thank his parents for making him exist and hopes you all enjoy the show!



Morgan Holcomb (*Mother*) is incredibly excited to be performing in the Welsbacher Theater again! Previous credits include *Go Like Saints* (Wichita State University), *A Midsummer Night's Dream* (Empty Space Theatre), and *Peter and the Starcatcher* (WSU). Morgan is a senior finishing a Bachelor of Fine Arts in Performing Arts with an emphasis in Theatre Performance degree and is a representative of the School of Performing Arts Student Council. She is also currently hired at Music Theatre Wichita as a Hair/Makeup Artist for their summer season. Coming up next, Morgan will be featured in the film premiere of *In Fraud We Trust* in April! You can find out more about Morgan on her Instagram [@mrholcomb20](https://www.instagram.com/mrholcomb20).



Aubrey Johnson (*Understudy*) is so excited to be a part of this production with Wichita State University's School of Performing Arts! Her previous involvements in the School of Performing Arts include performing as Joyce in *Mama Bushwick is Dead* (WSU) and Ensemble in *Peter and the Starcatcher* (WSU). Her future involvements include Wichita State Music Theatre Company's *The Guy Who Didn't Like Musicals*. Aubrey is pursuing a Bachelor of Fine Arts in Performing Arts with an emphasis in Musical Theatre and can't wait to see what the future holds!



Stevie Longacre (*Alicia*) is excited to return to Wichita State University for *The Angel of Death*! She just graduated from WSU in Fall 2024 with a Bachelor of Fine Arts in Performing Arts with an emphasis in Theatre Performance. She is currently living in Wichita until December 2025. Previously, they have appeared in *Twelfth Night* (WSU), *The Importance of Being Earnest* (Wichita Repertory Theatre), and *Peter and the Starcatcher* (WSU). You can find them at [@hayleylongacre](https://www.instagram.com/hayleylongacre) on Instagram!

BIOGRAPHIES



Ian Moore (*Deadbeat Dad/Assistant Director*) is receiving a Bachelor of Arts in Performing Arts with an emphasis in Theatre and a directing certificate. He is also the Artistic Director for Wichita State University Empty Space Theatre. Previous directorial credits include Director of *A Midsummer Night's Dream* (Empty Space Theatre), Assistant Director for *Mama Bushwick is Dead* (WSU), and Assistant Director of *Miss Alma's Rules* (Tulsa Community College). Previous acting credits include Adrian in *Christmas Dish* (WSU) and Ensemble in *Peter and the Starcatcher* (WSU). Ian strives to initiate creative and supported world-building within communities through the lens of theatrical performance, directing, and designing. He wishes to help facilitate the creative flow within hard-working and dedicated groups of people who share his passion for storytelling.



Sara Moore (*Understudy*) is a 21-year-old Performing Arts second-year student pursuing a Bachelor of Arts in Performing Arts with an emphasis in Theatre at Wichita State University (WSU). She is new to the stage but well-traversed in the world of acting. From TV and film to producing her own shorts, Sara has worked in the acting industry since she was 12. Now at WSU, she works on her skills to become a better performer, improve her voice, and find a space to use her abilities. Sara made her stage debut in 2024 with Wichita State Music Theatre Company's *The Trail to Oregon!* in the role of daughter. She has since been in WSU's *Twelfth Night* as Maria. Sara is excited to use her skills in this reading of *The Angel of Death* and be there to support her fellow actors.



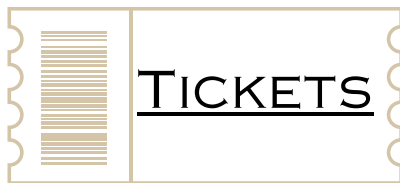
Amanda Schmalzried (*Playwright*) is thrilled to present her play, *The Angel of Death*. Amanda is a senior pursuing a Bachelor of Arts in Performing Arts with an emphasis in Theatre and certificates in Directing and Filmmaking. Her passions are directing and scriptwriting for theatre and film/television. Amanda's mission as an artist is "to create spaces for untold stories and challenge audiences with new perspectives."



Fio Willis (*Narrator*) is a second-year student at Wichita State University (WSU) pursuing a Bachelor of Arts in Performing Arts with an emphasis in Theatre and a minor in Art and Design. They serve as the Outreach Chair for Empty Space Theatre. Their most recent role was as Footnote in *Smokefall* (Empty Space Theatre). When not onstage or backstage, they spend their time drawing, roller skating, and drinking any number of hot beverages. Toodles!

COMING SOON

IN FRAUD WE
TRUST + NEW
DANCE FILM
APRIL 19, 2025



APRIL 24-27, 2025

SPRING
DANCE
CONCERT

SPRING DANCE
CONCERT

APRIL 24-27, 2025



**ALFRED S. & ESTHER U PERRY ENDOWED
MEMORIAL SCHOLARSHIP IN FINE ARTS**

Lexye Collins
Delaney Davis
Nicholas Macias
Jesse Stephenson
Alyssa Watson

AUDREY NEEDLES SCHOLARSHIP FUND

Morgan Holcomb

BRETT NEFF MEMORIAL SCHOLARSHIP

Lynnaya McClure

**CHARLIE WHITWORTH THEATER
SCHOLARSHIP**

Imani Perkins

**DELORES AND CHARLES CRUM MAINSTAGE
THEATRE SCHOLARSHIP**

Trevor Andreason
Jordan Bodenhamer
Dylan Bray
Lena Castro
Alexis Driscoll
Morgan Holcomb
Liliana Jimenez
Ace La Valla
Sara Moore
Seferino Ramirez
Makayla Lake
Fio Willis

**DR. FORREST E. RICHERT MEMORIAL
ENDOWED SCHOLARSHIP**

Alexandria Thanscheidt

ELEANOR DOTY CLAIR SCHOLARSHIP

Morgan Holcomb

**GEORGE D. WILNER ACHIEVEMENT AWARD
(SCHOLARSHIP)**

Lynnaya McClure

**HICKMAN SCHOLARSHIP PERFORMING ARTS
MUSICAL THEATRE**

Jyavon Hill
Francie Robu

**JANICE CHAMBERS RAMSEY
SCHOLARSHIP IN MUSICAL THEATRE**

Von Love
Gracie Solas

**JON AND KELLY CALLEN MUSICAL
THEATRE ENDOWED SCHOLARSHIP**

Lexye Collins

**JOYCE CAVAROZZI ENDOWED
SCHOLARSHIP IN THEATRE**

Lynnaya McClure

**JULIAENNE WEAVER MASTERS THEATRE
SCHOLARSHIP**

Imani Perkins

**JUNE M. LAIR ENDOWMENT FOR THE
ARTS (SCHOLARSHIP)**

Emily Flowers

**KIM STEPHENS MEMORIAL ENDOWMENT
FOR EXCELLENCE IN DANCE
(SCHOLARSHIP)**

Lille Nightingale

**LINDA STARKEY MUSICAL THEATRE
SCHOLARSHIP**

Lexye Collins

LULU BONAVIA DANCE SCHOLARSHIP

Rylee Ayon
Andrae Carter
Shawn Gordon
Olivia Lockwood
Cassidy McAllister
Sam Zimmerman

**MARCUS FAMILY ENDOWED
SCHOLARSHIP FOR EXCELLENCE IN THE
FINE ARTS**

Lille Nightingale

MARJORIE LOIS GRAHAM SCHOLARSHIP

Lynnaya McClure
Lille Nightingale
Lucas Shroyer

MARTHA M. FLEMING DANCE SCHOLARSHIP

Lille Nightingale

MARY JANE TEALL THEATRE SCHOLARSHIP

Morgan Holcomb
Seferino Ramirez Jr.

**MICKEY AND PETE ARMSTRONG
PERFORMING ARTS SCHOLARSHIP**

Kimmy Aguilar
Jacob Crabtree
Zoie Dangerfield

MILLER TRUST - COLLEGE OF FINE ARTS

Cooper Green
Alaycea Kremeier
Nicholas Macias
Lille Nightingale
Sam Zimmerman

MILLER TRUST - DRAMA

Elena Cianciolo
Lexye Collins
Gabriel Cornwell
Delaney Davis
Nicholas Dreier
Sean Gorman
Dani Little
Lynnaya McClure
Darby Parks
Leopold Porcaro
Ruby Quezada Valadez
Ava Rivera
Francie Robu
Lucas Shroyer
Ya Mi Vang
Alyssa Watson
Ava Wiechman

**PAMELA J. POSTIER PERFORMING ARTS
SCHOLARSHIP**

Olivia Lockwood

PATRONS OF MUSIC THEATRE

Gabriel Cornwell
Jyavon Hill

PERFORMING ARTS ANGELS

Colton Farmer
Skylar Lane
Annika Lindeman
Grace Ryan

**RANDAL M. JONES ENDOWED
SCHOLARSHIP**

Lexye Collins

**SCHAEFER, JOHNSON, COX, FREY &
ASSOCIATES, P.A. ENDOWED
SCHOLARSHIP**

Gracie Solas

**STEV OVERSTREET DEAN'S FUND IN
FINE ARTS**

Hayley Loya

TURTLE SCHOLARSHIP FOR DANCE

Alaycea Kremeier
Olivia Lockwood
Kaete Mokrynski

**VAN & VIRGINIA LEE FISER END MEM /
OPERA/MUSIC THEATRE**

Gabriel Cornwell
Von Love





The Performing Arts Angels exists to provide educational and training opportunities for talented dance, musical theatre, and theatre (performance and design/tech) students in the School of Performing Arts - opportunities not funded through the state or university.

The School of Performing Arts faculty, staff, and students recognize and deeply appreciate all your financial support. It allows us to fulfill our mission to educate and train students for a career in the arts and entertainment industry. To find out how you can become a Performing Arts Angel and support the School of Performing Arts students, please contact our office at 316-978-3078 or give online at www.wichita.edu/give.

We apologize in advance for any omission or errors in this list. Please bring corrections to the attention of Caleb Fouse at caleb.fouse@wichita.edu or 316-978-7266. Listings may shift from one program to another depending on the timing and receipt of gifts.

Giving for January 2024 - February 2025

PRODUCER (\$1,000 +)

Marty & Donna Perline
Michael Bayouth
Stev Overstreet
Sally Ottaway
Ed & Danette Baker
Gary Wood
Dennis & Genell Arnold
Anita Jones
Julie and Stan Longhofer
Mike & Susan Pompeo
Pete & Renea Goforth
Keith & Georgia Stevens
Marlene Hayes
Paul & Michelle Witte
Richard & Debra Campbell
Christine Kubik Living Trust
Lionel & Tammy Alford

DIRECTOR (\$500-\$999)

Pam Postier
Raymond & Diane Gans
Jerry Martin
Jane McHugh
Dee & Linda Starkey
Lance & Della Lickteig
Louise Brinegar and Gene Carr
Thom & Adrienne Rosenberg
Shoko Sevar
Kansas Dance Academy
John Fishpaw & Kimberly Krohn
Marie Bukowski

CHOREOGRAPHER (\$200-\$499)

Wes Henderson
Kelly & Tanja Harrison
Harriet Hickman

Performing Arts Angels

CONTINUED FROM PREVIOUS PAGE

CHOREOGRAPHER (\$200-\$499)

David Stone & Marni Vliet Stone
Bill & Pam Lappin
Wayne Bryan
Walter & Kaye Myers
Richard Muma & Rick Case
Steven & Kitchel Woods
Cheyla Clawson
Deborah Gafvert & Kenneth Gibbs
Nancy Anderson
Rodney Miller & Pina Mozzani
Groves Retail Liquor
Michael Klaassen & Gerri Colgan
Donna H. Ard Revocable Trust

DESIGNER (\$100-\$199)

Stephen Sowards & Jane Wilcox
Dean Cleverdon & Nancy Nyberg
Ken & Marilyn Pauly
Alan & Sharon Fearey
Hew & Judy Goodpasture
Anne Welsbacher
Deb Brinegar & John Diel
Lou & Mallory Medvene
Jeff Koch & Lesley Riddell-Koch
Ann Marie Siegwarth
Nathan Miller
Matt Fisher
Kathleen Moore

PERFORMER (\$25-\$99)

Ted & Debra Kimble
Rob Simon & Denise Jackson-Simon
Brian & Sarah Walden
Patrick & Sandra Hannon
Elizabeth Wine
Nadia Karim
Rob, Denise & Arri Simon
Charitable Fund



*Thank you
Angels!*



SPA
SCHOOL of
PERFORMING ARTS

Performing Arts Angels

Everyone Can Be An Angel

Visit wichita.edu/give to become a member online with a credit card, or complete the form below, enclose a check (payable to the WSU Foundation/Performing Arts Angels) and send by mail to:
1845 Fairmount, Campus Box 2, Wichita, KS 67260.

- | | | |
|--------------------------|---------------|-----------|
| <input type="checkbox"/> | Producer | \$1,000+ |
| <input type="checkbox"/> | Director | \$500-499 |
| <input type="checkbox"/> | Choreographer | \$200-499 |
| <input type="checkbox"/> | Designer | \$100-199 |
| <input type="checkbox"/> | Performer | \$25-99 |

Contact Name: _____

Phone #: _____ Email: _____

Address: _____

City/State: _____ Zip Code: _____

Wichita.edu/give