

PLAYBILL®

Wilner Auditorium
Wichita State University School of Performing Arts
Wichita, KS

W. SHAKESPEARE



Wichita State University School of Performing Arts

Wilner Auditorium

PRESENTS

LOVE'S LABOR'S LOST

by

William Shakespeare

with

Scenic & Lighting Design
David Neville

Costume Design
Sarah Bussard

Wig & Hair Design
Katie Geotz

Makeup Design
Abbey Evans

Sound Design
Alexys Porter

Technical Director
Ed Baker

Stage Manager
Emily Matchell

Assistant Director
Marcee Cosby

Directed by
Paula Makar

SCENES

ACT I

Scene I: The King of Navarre's park

Scene II: The King of Navarre's park

ACT II

Scene I: Outside the gates of Navarre's court

ACT III

Scene I: The King of Navarre's park

ACT IV

Scene I: Navarre's Park. A hunter's station at the edge of a coppice

Scene II: The King of Navarre's park

Scene III: The King of Navarre's park

10-Minute Intermission

ACT V

Scene I: The King of Navarre's park

Scene II: Navarre's Park. Near the ladies' tents

CAST

Cast Members

Ferdinand, King of Navarre	Matthew Alexander
Lord Berowne, attending on the King	Austin Hancock
Lord Longaville, attending on the King	Zac Richardson
Lord Dumaine, attending on the King	Hagan Simmons
Princess of France	Emily Redfield
Lady Rosaline, attending on the Princess	Bethany Khanu
Lady Maria, attending on the Princess	Cat Kee
Lady Katharine, attending on the Princess	Katy Reko
Boyet, messenger	Mary-Michael Gomez
Don Adriano de Armado, a fantastical Spaniard	Drew Thomas
Moth, Armado's page	Lynnaya McClure
Sir Nathaniel, curate	Dylan Bray
Holofernes, schoolmaster	Morgan Holcomb
Dull, constable	Dylan Lindsey
Costard, a rustic	Jessica Hudson
Jaquenetta, country wench	Renae Richmond
Forester and Marcade	Ashley Grega

PRODUCTION TEAM

Crew Members

Director	Paula Makar
Assistant Director	Marcee Cosby
Dramaturg	Jeannine Russell
Stage Manager	Emily Matchell
Assistant Stage Manager	Blake Grimsley
Assistant Stage Manager	Katelyn King
Collaborative Pianist	Rich Bruhn
Production Coordinator	Melissa Penkava Koza
Technical Director	Ed Baker
Stage Manager	Emily Matchell
Scenic & Lighting Design	David Neville
Costume Design	Sarah Bussard
Assistant Costume Design	Adia Tolbert
Wig & Hair Design	Katie Goetz
Makeup Design	Abbey Evans
Sound Design	Alexys Porter
Head Electrician	Katelyn Koch
Props Manager	August Smaglik
Props Assistants	Tamara Gagne, Katelyn Koch
Scene Shop Manager	Jason Flanders
Scene Shop Lead	Alex Simpson
Scene Shop Assistants	Scott Cockrill, Will Smith, Denise Ussery, Blake Grimsley, Nick Roux
Costume Shop Manager	Melissa Penkava Koza
Lead Costume Shop Assistant	Katy Reko
Costume Shop Assistants	Jade Almsberger, Emery Downs, Emily Evans, Caleb Hayden, Katie Goetz, Adia Tolbert
Wig/Hair/Makeup Crew	Brooke Harrington, Lille Nightingale
Wardrobe Supervisor	Jade Almsberger
Light Board Operator	Nat Kuhn

PRODUCTION TEAM

Crew Members (continued)

Sound Crew	Tim Hampton, Elain Watson, Christina Noble-Speedie, Aliyah Muthoni
Poster Design	Alex Simpson
Program Design	Sophia Hillman

FROM THE DIRECTOR

DIRECTOR'S NOTES

Love's Labors Lost

Right before the pandemic hit, I was booked to direct several shows, and of course, in March 2020, I lost them all. "What to do now?" I wondered aloud and quite frequently. I was lucky to have such a privilege - there were others who were not so fortunate. I was lucky to still be teaching, sharing my love of acting and directing with my students, but I craved a creative outlet with my peers. I was fortunate enough to be selected to craft some five-minute filmed pieces for Viral Shakespeare, the brainchild of Liz Anderson, Board President for Wichita

Shakespeare Company – but I needed a bigger fix. I was able to get into two online reading groups -SISR, Socially Isolated Script Readings, which included writers and actors reading at least six short scripts a session on a Friday night; and Quarantine Shakespeare, which met on Thursday nights. With this group, we managed to read Shakespeare's ENTIRE CANON during the exact length of the quarantine, right up to this spring, when we all seemed to trickle back to work after the advent of the Covid Vaccine. We read *Love's Labors Lost* and I got to play Nathaniel! It's one of Shakespeare's first comedies and it has an unusual ending. In this play, Shakespeare is making fun of the poet Petrarch and his outdated modes of poetic expression. So, when I found out I was going to direct this play, I wanted to find a way to make it relevant for today's audience. I set it in the present day, and our actors and the design team had so much fun finding the modern-day equivalents of the inhabitants of this comedy. I've also employed a very broad comedic style here, instead of pursuing a more academic bent. We hope you enjoy your romp through Navarre with King Ferdinand and the Princess!



~Paula

About Paula Makar

Paula is very excited to direct Love's Labors Lost for Wichita State University! A member of SDSC, Paula earned her Master's Degree in Theatre from Oklahoma State University, and her BFA in Theatre Performance from Wichita State, where she serves as an Adjunct Lecturer. Directing and choreography credits include 9 to 5 for Aspen Community Theatre, My Partner, for Mountain Rep in CO, The Liar for Southwestern College, The Lion, the Witch, and the Wardrobe for Newman University, MTYP, the Crown Uptown, and for Wichita Community Theatre. Paula also adapted and directed Othello for Wichita Shakespeare Company. In Michigan, Paula was an Adjunct Instructor of Drama at Olivet College, and Director for the Youth Theatre Programs at the Marshall Civic and Marshall Middle School. In Buffalo, Paula was a member of the Buffalo Ensemble Theatre and Theatre of Youth. Paula would like to thank Danette Baker for the opportunity to work with such a talented group of actors and designers. She would also like to thank her husband Rich for being so supportive! Please visit Paula's website at www.paulamakar.moonfruit.com

WHO'S WHO



Matthew Alexander

as Ferdinand, King of Navarre

Matthew Alexander (King Ferdinand) is a senior pursuing a BFA in Musical Theatre. Previous credits include *Anything Goes* (WSU), *Keepers Of The Flame* (WSU), *Seussical* (WSU), and *Street Scene* (WSU). He strives to bring love and light into everything he does and would like to thank his parents for their endless support and beliefs in his talents.



Dylan Bray

as Sir Nathaniel, curate

Dylan Bray (Nathaniel) is making their Wichita State University theatre debut. Previous credits include *A World Between* (Brown Grand Theater), *Taming of the Shrew* (Brown Grand Theater), *Tartuffe* (Cook Theater). Dylan is a freshman pursuing a Bachelor of Arts in Theatre. Dylan is a member of SAC, PASS, CSB, Empty Space Theatre, LGBTQ+ Ambassador.



Rich Bruhn

Rich Bruhn is very excited to provide original music for this WSU production! Rich was a Collaborative Pianist for the WSU Musical Theatre program several years ago. He is also a Musical Director/Arranger and is currently working on the upcoming show *Church Basement Ladies* at Roxy's Downtown. Rich works with the Vocal Music program at Andover Central High School and is Assistant Director of Music at Aldersgate UMC. Rich also maintains a studio for private piano instruction.



Abbey Evans

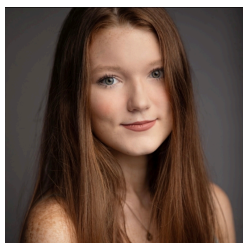
Abbey Evans (Makeup Designer) is delighted to be designing the makeup for this production. Previously she has served as makeup coordinator for *Keeper of The Flame* (Wichita State University) and was the makeup supervisor for *[title of show]* (Wichita State University). Abbey is a senior and will be graduating next fall with a Bachelor of Fine Arts in Design & Technical Theatre.

WHO'S WHO



Katie Goetz

Katie (Wigs/Hair Design) is a senior graduating with a BFA in Design & Technical Theatre this semester. Previous show credits at Wichita State include the role of Hair and Makeup Supervisor for *Anything Goes* and *Thrilled to Announce*. She has also designed costumes for *Love Me or Leave Me*, [title of show], and coordinated costumes for *Keepers of the Flame*.



Mary-Michael Gomez *as Boyet, messenger*

Mary-Michael Gomez (Boyet) is excited to be performing in her third production at Wichita State. Previous credits include *Keepers of the Flame* (Julie Jordan), *Street Scene* (Child Ensemble), and *Better to Have Loved* (Empty Space Theatre). She is currently a senior pursuing a BFA in Musical Theatre. She hopes you enjoy the show, and laugh a lot!



Ashley Grega *as Forester and Marcade*

Ashley Grega (Forester/DJ/Marcade) is excited to be in her second show at Wichita State University. Previous credits include *Voices in the Void* (Wichita State) and *The Fantasticks* (Mill Valley High School). Ashley is a sophomore majoring in Theatre Performance and she is a part of The Empty Space Executive Board and Delta Gamma Sorority.



Blake Grimsley

Blake Grimsley (Assistant Stage Manager) is so excited to be on Wichita State University theatre's production of *Love's Labor's Lost*. He has previously worked as a Sound Assistant on *Keepers of the Flame* (WSU), and he is the Co-Technical Director for Empty Space Theatre. Blake is a BFA in Design & Technical Theatre with a focus in stage management and is interested in costume design and construction.



Austin Hancock *as Lord Berowne, attending on the King*

Austin Hancock (Berowne) is starring in his second stage role at WSU. Previously he has starred in [title of show] (Independence Community College) and *Dead Man's Cellphone* (Independence Community College). He is a sophomore in pursuit of a BFA in Theatre Performance, as well as a certificate in Voice Acting.

WHO'S WHO



Morgan Holcomb *as Holofernes, schoolmaster*

Morgan Holcomb (Holofernes) (She/Her) is making her Wichita State University theatre debut. Previous credits include *The Miracle Worker* (Flinthills High School) and *A Little Princess* (Flinthills High School). Morgan is pursuing a Bachelor of Fine Arts degree in Theatre Performance. You can find out more about Morgan @mholcomb20 on Instagram.



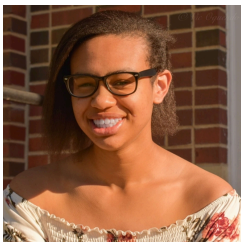
Jessica Hudson *as Costard, a rustic*

Jessica Hudson (Costard) is making her Wichita State University theatre debut. Previously she appeared in *Bonnie and Clyde* (GHS), *Big Fish* (GHS), and *A Christmas Carol* (GHS). Jessica is a freshman pursuing a Bachelor of Arts in Theatre. Jessica's mission as an artist is "to show the world that theatre has something for everyone to enjoy."



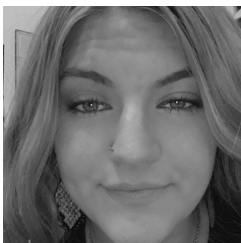
Cat Kee *as Lady Maria, attending on the Princess*

Cat Kee (Maria) is making their Wichita State University theatre debut. Previous credits include *Working* (Marysville Area Community Theatre), *Much Ado About Nothing* (M-ACT), *Doctor, Doctor!* (M-ACT). Cat is a junior pursuing a BFA in Theatre Performance, with a minor in Signed Languages and a certificate in Voice Acting.



Bethany Khanu *as Lady Rosaline, attending on the Princess*

Bethany Khanu (Rosaline) is excited to be on this stage in person. Previously appeared in *Miss Nelson is Missing* (Mulvane WildActs), *Voices in the Void* (Wichita State University), and *Gumshoes* (Stagestruck Audio Theatre). Bethany is a senior pursuing a BFA in Theatre Performance with a voice-acting certificate. Her mission is to embrace the power to smile when people could use a friend.



Katelyn King

Katelyn King (Assistant Stage Manager) is ecstatic to be a part of this show at Wichita State University theatre's production of *Loves Labor's Lost*. She has previously worked on *Keepers of the Flame* as an ASM at WSU, and *The Little Mermaid* as a stage manager at Santa Fe High School in Edmond, OK. Katelyn is a sophomore pursuing a BA with a focus in stage management.

WHO'S WHO



Dylan Lindsey

as Dull, constable

Dylan Lindsey (Dull) is excited to be making their Wichita State University theatre debut. Previous credits include *Arsenic and Old Lace* (Wichita High School South), *An Evening of Culture* (Wichita High School South), and *Macbeth* (Wichita High School South). Dylan is a junior pursuing a major in BA in Theatre.



Emily Matchell

Emily Matchell (Stage Manager) is a junior at WSU with the previous shows; *[title of show]*, *Love Me or Leave Me*, and *Shakespeare Abridged*. She is pursuing a B.A in Theatre, a Stage Management Certificate, and a minor in Art and Design. Emily is the Co-Technical Director for Empty Space Theatre and wants to use her degree to give opportunities to her other artists.



Lynnaya McClure

as Moth, Armado's page

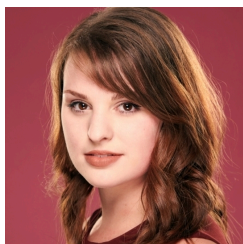
Lynnaya McClure (Mote) is making her Wichita State performing debut. Her credits include *The Addams Family* (Inspired Purpose), *Clue* (Olathe Northwest Theatre), and *Descendants* (Olathe Northwest Theatre). She is pursuing a BA in Theatre and a Directing Certificate. She is in the Honors College, WuChoir, and was on ONW Theatre's Executive Board.



Emily Redfield

as Princess of France

Emily Redfield (Princess) is thrilled to be returning to the WSU main stage. She was last seen last spring as Sapphire in *Voices in the Void*. Recent credits include *Arms and the Man* (Kechi Playhouse) and *The Diary of Anne Frank* (Wichita Community Theatre). Emily is a sophomore pursuing a BFA in Theater Performance along with a certificate in directing. Her mission is to inspire future generations of artists.



Katy Reko

as Lady Katharine, attending on the Princess

Katy Reko (Katharine) is elated to make her WSU stage debut in *Love's Labor's Lost*. Previous credits include Costume Designer for *The Monty Hall Problem* (WSU) and *Dead Harvest* (A Short Film). She is pursuing her BFA in Musical Theatre and Design/Technical Theatre in costuming. Katy currently works in the WSU Costume Shop as the Lead Shop Assistant.

WHO'S WHO



Zac Richardson

as Lord Longaville, attending on the King

Zachary Richardson (Lord Longaville) is excited to be participating in *Love's Labor's Lost* with WSU. Prior credits include *Voices in the Void* and *Comedy of Errors* here at WSU. He is working to earn a BFA in Theatre Performance. Zachary wants to thank his friends, family, and teachers for helping him and pushing him this far. Thank you and enjoy the show!



Renae Richmond

as Jaquenetta, country wench

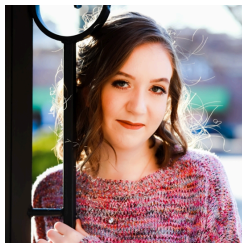
Renae Richmond (Jaquenetta) is making her debut on the Wilner Stage. Previous credits include *Voices in the Void* (Wichita State) and a student film titled *Brainstorm* (Wichita State). Renae is a sophomore pursuing a BFA in Performing Arts emphasis in Theatre Performance with a Music Theatre Minor. Renae's mission is to create a space where people's voices have a chance to be heard through performance.



Hagan Simmons

as Lord Dumaine, attending on the King

Hagan Simmons (Dumaine) is a junior at WSU. You, on occasion, might see him around at Roxy's Downtown or bothering everyone in the costume shop. He's majoring in theatre performance BFA and minoring in history because hey who needs money.



August Smaglik

August Smaglik (Props Manager) is thrilled to be working on Wichita State University theatre's production of *Love's Labor's Lost*. Previous credits include Props Head in *Keepers of the Flame* (Wichita State University), Props Head in *Voices in the Void* (Wichita State University), and was recently on wardrobe for *The Toxic Avenger* (Roxy's Downtown). August is a sophomore pursuing a Bachelor of Fine Arts in Design & Technical Theatre. August's mission is to design a show of their own.

WHO'S WHO



Drew Thomas

as Don Adriano de Armado, a fantastical Spaniard

DL Thomas III is a junior at WSU. He is studying to get his BFA in Theatre Performance with certificates in Directing and Physical Performance Studies. You may have seen him around at Roxy's Downtown or in other WSU productions. He is so excited for you to see him as Armado, the handsome, talented, handsome Spaniard. He hopes you love the show and have a great time!



Adia Tolbert

Adia Tolbert (Assistant Costume Designer) is thrilled to be working on Wichita State University's theatre production of *Love's Labor's Lost*. Previously she has served as wardrobe manager for both *The Monty Hall Problem* and *[title of show]* (Wichita State University). Adia is a sophomore, pursuing a BFA in Design & Technical Theatre, with an emphasis on costuming. Adia's mission as an artist is to "experience and create incredible things in as many artistic mediums as possible".

ACKNOWLEDGEMENTS

Special Thanks

Performing Arts Angels

Performance Facilities

Dean Rodney Miller and the Dean's Office

School of Performing Arts Faculty and Staff

Linda Starkey, Director of the School of Performing Arts

Student Government Association

Kent Audio Visual

McClelland Sound Inc.



WICHITA STATE
UNIVERSITY

COLLEGE OF FINE ARTS

School of Performing Arts



WICHITA STATE
UNIVERSITY

COLLEGE OF FINE ARTS



WICHITA STATE
UNIVERSITY

*STUDENT GOVERNMENT
ASSOCIATION*

MORE INFORMATION

COMING SOON

DEC

**VIRTUAL KANSAS
SCREENDANCE FESTIVAL**

DEC. 3-5

DANCE SPRING CONCERT

FEB 24-26

FEB

MAR

MUSICAL THEATRE SENIOR PROJECT

MARCH 11

DANCE STUDENT CHOREOGRAPHER SHOWCASE

MARCH 11-12

APR

EMPTY SPACE THEATRE PRESENTS

**THE 25TH ANNUAL PUTNAM COUNTY
SPELLING BEE**

MARCH 31-APRIL 3

DANCE SENIOR PROJECT

APRIL 14

NEW PLAY FESTIVAL

APRIL 18-23

APR

APR

2021 BELA KIRALYFALVI NATIONAL PLAYWRITING WINNER

GO LIKE SAINTS

APRIL 21-23

POPCORN MOVIE

APRIL 29-30



The Kennedy Center

The Kennedy Center American College Theater Festival, part of the Rubenstein Arts Access Program, is generously funded by David M. Rubenstein.

Special thanks to The Harold and Mimi Steinberg Charitable Trust for supporting the John F. Kennedy Center for the Performing Arts' Kennedy Center American College Theater Festival.

Additional support is provided by The Honorable Stuart Bernstein and Wilma E. Bernstein; and the Dr. Gerald and Paula McNichols Foundation.

Kennedy Center education and related artistic programming is made possible through the generosity of the National Committee for the Performing Arts.

This production is entered in the Kennedy Center American College Theater Festival (KCACTF). The aims of this national theater education program are to identify and promote quality in college-level theater production. To this end, each production entered is eligible for a response by a regional KCACTF representative, and selected students and faculty are invited to participate in KCACTF programs involving scholarships, internships, grants and awards for actors, directors, dramaturgs, playwrights, designers, stage managers and critics at both the regional and national levels.

Productions entered on the Participating level are eligible for invitation to the KCACTF regional festival and may also be considered for national awards recognizing outstanding achievement in production, design, direction and performance.

Last year more than 1,500 productions were entered in the KCACTF involving more than 200,000 students nationwide. By entering this production, our theater department is sharing in the KCACTF goals to recognize, reward, and celebrate the exemplary work produced in college and university theaters across the nation.

MORE INFORMATION

Scholarship Recipients

JAMES & CATHERINE BUCK FINE

ARTS SCHOLARSHIP

Jackson Dorris
Mary-Michael Gomez
Dylan Lindsey
Victoria Oquendo
Taylor Poling
Zachary Richardson
Kaley Russell

PERFORMING ARTS ANGELS

Jade Almsberger
Morgan Holcomb
Cobie Reeves
Elaine Watson

JULIAENNE W. MASTERS THEATRE SCHOLARSHIP

Adia Tolbert

MILLER TRUST FINE ARTS

SCHOLARSHIP

Hannah Chandler
Alexandria Nickel
Lille Nightingale
Piper Patterson
Liberty Warner

JOYCE CAVAROZZI THEATRE SCHOLARSHIP

Alexandra Simpson

STEV OVERSTREET DEAN'S FUND FOR FINE ARTS

Margaret Ahern
Olivia Goodspeed
Caitlin Wolff

DOLORES AND CHARLES CRUM MAINSTAGE THEATRE SCHOLARSHIP

Austin Hancock
Porter Jones
Bethany Khanu
Victoria Oquendo
Emily Redfield
Zachary Richardson
Renaë Richmond
August Smaglik
Adia Tolbert
Christina Noble-Speedie
Elaine Watson

BRET NEFF MEMORIAL SCHOLARSHIP

Mirta Santana

MILLER TRUST DRAMA SCHOLARSHIP

Sydney Alder
Allison Cashman
Marcella Cosby
Ethan Harmon
Gabrielle Johnson
Kaitlin Reko
Alexandra Simpson
Gavin Tanner
Drew Thomas

ALFRED & ESTHER PERRY SCHOLARSHIP

Mckenna Lewis
Madelyn Marshall
Levon Mathis
Mirta Santana
Alexandra Simpson

ELEANOR DOTY CLAIR SCHOLARSHIP

Emily Redfield

KIM STEPHENS EXCELLENCE IN DANCE

Hannah Chandler

AUDREY NEEDLES SCHOLARSHIP FUND

Marcella Cosby
Ella Kempker

ARMSTRONG PERFORMING ARTS SCHOLARSHIP

Denver Fankhouser
Megan Secrest

DR. FORREST E RICHERT MEMORIAL SCHOLARSHIP

Katrina Kisner

MARTHA M FLEMING DANCE SCHOLARSHIP

Anna-Sophia Reyes

HICKMAN SCHOLARSHIP IN PERFORMING ARTS MUSICAL THEATRE PROGRAM

Ashley Strella

JUNE M LAIR ARTS SCHOLARSHIP

Hagan Simmons

TURTLE SCHOLARSHIP FOR DANCE

Bailey Buchanan
Madelyn Marshall

RANDAL M. JONES SCHOLARSHIP

Ethan Crank
Hagan Simmons

MARY JANE TEALL THEATRE SCHOLARSHIP

Mirta Santana
Hagan Simmons

GEORGE WILNER ACHIEVEMENT AWARD

Hagan Simmons

LULU BONAVIA DANCE SCHOLARSHIP

Trevor Hayden
Cobie Reeves
Liberty Warner

MUSIC THEATRE SCHOLARSHIP

Philip Hanson
Sophia Hillman
Claire Kennard

MARJORIE LOIS GRAHAM SCHOLARSHIP

Kayla Knoll
Anna-Sophia Reyes
Mirta Santana

PAMELA POSTIER SCHOLARSHIP

Hannah Chandler

RAMSEY MUSICAL THEATRE SCHOLARSHIP

William Day
Jaden Kindle
Abby Lanini
Emerson Ross
Thomas Yambo-Rios

In Memoriam



Amy Chisman

This last August, the School of Performing Arts beloved Production Manager, Amy Chisman, lost her valiant battle with cancer. Amy (or "Chis" as many of us called her) was an invaluable member of our SPA family. She was a WSU/SPA graduate, a talented and brilliant artist and an ardent supporter of the Arts. She was an amazing mentor, a wonderful colleague and a beautiful friend.

Amy was a Keeper of the flame. She was a Keeper of Creativity and Artistry, of Knowledge and Skill. She was a Keeper of Love & Kindness & Compassion. While you may be reading this through tears (as I am while writing it), keep this Keeper in your hearts. Let her always live on and inspire you to become a Keeper like her.

Amy, we love you. We miss you and we are immensely grateful for all that you were and all that you gave us. We will always, always keep your flame burning, Dear Friend. ~ Jeannine Russell

Karla Burns

We would also like to acknowledge the passing of Karla Burns who passed away this June.

While studying theatre and music at WSU in the 1970's, she graced the stage in many productions in both Wilner and Duerksen Fine Arts Center. She went on to an international career with performances at the Metropolitan Opera, Paris Opera, and Cairo Opera House to name just a few. She is remembered as a powerhouse performer whose voice and personality captivated all who saw her perform. Her signature roles were probably Queenie in *Showboat* and *Hi-Hat Hattie*, a one-woman show which she toured for years.

A scholarship in her name has been established at the WSU Foundation. You can contribute to the "Karla Burns Memorial Scholarship for Performing Artists" at

<https://foundation.wichita.edu.memorials-honors/>



MORE INFORMATION

PERFORMING ARTS ANGELS

The Performing Arts Angels exist to provide educational and training opportunities for talented dance, musical theatre, and theatre (performance and design/tech) students in the School of Performing Arts - opportunities not funded through the state or university.

The School of Performing Arts faculty, staff, and students recognize and deeply appreciate all your financial support. It allows us to fulfill our mission to educate and train students for a career in the arts and entertainment industry. To find out how you can become a Performing Arts Angel and support the School of Performing Arts students, please contact our office at 316-978-3899 or give online at www.wichita.edu/give.

We apologize in advance for any omission or errors in this list. Please bring corrections to the attention of Alyssa Scott at alyssa.scott@wichita.edu or 316-978-3899. Listings may shift from one program to another depending on the timing and receipt of gifts.

Giving for August 2020-September 2021

**Deceased*

PRODUCER (\$1,000 +)

Marty & Donna Perline
Pam Postier
Michael Bayouth
Jerry Martin
Stev Overstreet
Sally Ottaway
Marla Zerener
Gary Wood
Ed & Danette Baker
Jane McHugh
Brenda Farha*
Belden & Anna Mills
Christine Kubik
Daniel & Martha Housholder
Julie & Stan Longhofer
Alan & Sharon Fearey
Richard & Cynthia Carl
Dottie Shannon
Marlene Hayes
Emily Bonavia
Paul & Michelle Witte
Richard & Debra Campbell
Denny & Sherry Grady

DIRECTOR (\$500 - \$999)

Raymond & Diane Gans
Anita Jones
Dee & Linda Starkey
Don & Elizabeth King
Shoko Severt
Ltc.(R) Lionel & Tammy Alford
Rick Bumgardner

CHOREOGRAPHER (\$200 - \$499)

Eric Engstrom
Suzie Couchman Peak
David Stone & Marni Vliet Stone
Delmar & Mary Klocke
Bill & Donna Ard
Hew & Judy Goodpasture
Pete & Renea Goforth
Walter & Kaye Myers
Pam Bjork
Rick Muma & Rick Case
James & Lisa Vayda
Nancy Anderson
Michael Klaassen & Gerri Colgan

DESIGNER (\$100 - \$199)

Harriet Hickman
Harold & Evelyn Gregg
Anne Welsbacher
Stephen Sowards & Jane Wilcox
Ward & Nancy Jewell
Rob Simon & Denise Jackson-Simon
Richard & Susan Skibba
Lou & Mallory Medvene
Ronald & Leann Barth
Steven & Kitchel Woods
Ann Marie Siegwarth
Nancy Wood

PERFORMER (\$25 - \$99)

Lee & Patti Elrick
Dean Corrin & Judy Dorrell
Rodney Miller & Pina Mozzani
Alexandra Levine
Nathan Miller



WICHITA STATE UNIVERSITY

COLLEGE OF FINE ARTS

School of Performing Arts



@wichtastateperformingarts



@wichtastateperformingarts



@WSU_SPA



wichita.edu/performingarts

BECOME A PERFORMING ARTS ANGEL!

*Visit wichita.edu/give to become a member online with credit card,
or complete this form, enclose a check (payable to the WSU Foundation/
Performing Arts Angels) and
send by mail to 1845 Fairmount, Campus box 2 Wichita, KS 67260.*

- | | |
|--|------------|
| <input type="checkbox"/> PRODUCER | \$ 1,000 + |
| <input type="checkbox"/> DIRECTOR | \$ 500-999 |
| <input type="checkbox"/> CHOREOGRAPHER | \$ 200-499 |
| <input type="checkbox"/> DESIGNER | \$ 100-199 |
| <input type="checkbox"/> PERFORMER | \$ 25-99 |

Name _____

Address _____

City _____

State _____ Zip _____

Phone _____