

PLAYBILL®

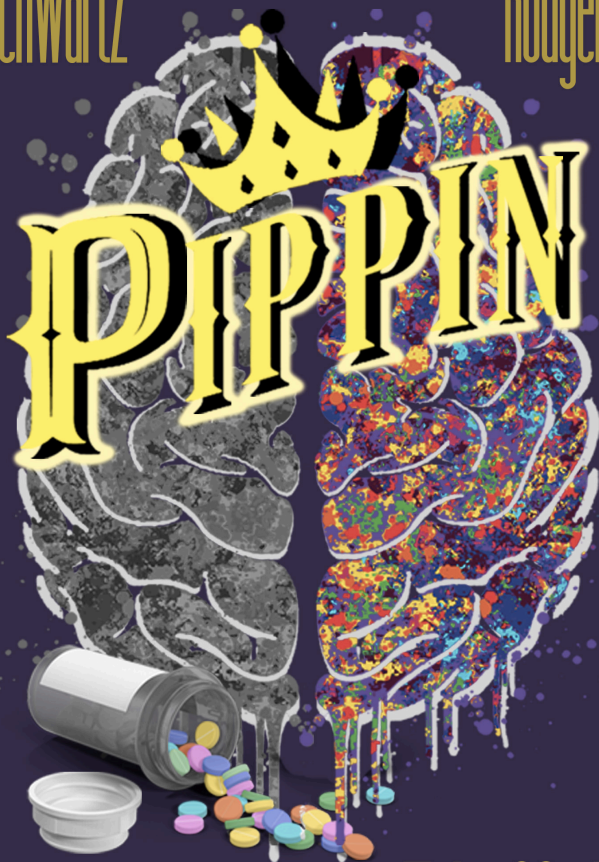
Wilner Auditorium
Wichita State University School of Performing Arts
Wichita, KS

music and lyrics by

Stephen Schwartz

book by

Rodger o. Hirson



Originally produced on the Broadway stage by Stuart Ostrow
Originally directed on the Broadway stage by Bob Fosse
2013 Broadway revival directed by Diane Paulus
Theo Ending Originally Conceived In 1998 by Mitch Sebastian

Feb. 23rd - 25th

@ 7:30pm

26th @ 2:00pm

Wilner Auditorium



SCHOOL OF
PERFORMING ARTS



PRESENTS

PIPPIN

Book by
ROGER O.
HIRSON

Music & Lyrics
STEPHEN
SCHWARTZ

with

Music Director
Phil Taylor

Stage Manager
Alex Simpson

Intimacy Director
Molly Tully

Scenic Designer
Tamara Gagne

Costume Designer
Adia Tolbert

Lighting Designer
Katelyn Koch

Projections
Kent Audio Visual

Sound Designer
Denise Ussery

Hair/Makeup Design
Sarah Bussard

Technical Director
Ed Baker

Choreography
Sophia Hillman
Amy Baker Schwiethale

Production Coordinator
Melissa Penkava
Koza

Assistant Director
Gabi Johnson

Director
Richard Bieber

Originally produced on the Broadway stage by Stuart Ostrow
Originally directed on the Broadway stage by Bob Fosse

2013 Broadway revival directed by Diane Paulus

Theo Ending Originally Conceived in 1998 by Mitch Sebastian

Pippin is presented through special arrangement with Music Theatre International (MTI).

All authorized performance materials are also supplied by MTI.

www.mtishows.co.uk • www.mtishows.com • www.mtishows.com.au

FROM THE DIRECTOR

Pippin recently celebrated its 50th anniversary, opening on Broadway in October of 1972. The book (or script) was written by Roger O. Hirson and the music and lyrics were by 24-year-old Stephen Schwartz, who already had a hit musical called *Godspell*. (After *Pippin*, Schwartz went on to write the score for *Wicked*, as well as the lyrics to several Disney animated features.)

But the creative force that made *Pippin* a smash-hit was director/choreographer Bob Fosse. Fosse was at the top of his game, having directed the film version of *Cabaret*, for which he won an Oscar as best director. A month before *Pippin* opened on Broadway, Fosse directed and choreographed Liza Minelli's television special called *Liza with a Z*, for which Fosse won an Emmy. He then won two Tony's for best director and best choreography for *Pippin*.

Fosse's contribution to *Pippin* was monumental. He created a surreal world that had one foot in the reign of King Charlemagne and one foot in the contemporary world. Who was the Leading Player and his troupe of performers? For that matter, who was Pippin? The show explores how a young man searches for fulfillment and much of that search is filled with humor. But it's also filled with equal amounts of darkness because the troupe of players is working to get Pippin to take his own life.

In our production, we're attempting to make the impulse of the story clear. We see a young man looking at a bottle of pills then suddenly finding himself in a hospital where all the staff, family, and other patients become characters in his "fever dream," which is the show itself.

This production is designed, co-choreographed, and assistant directed by students. The creativity of the students and their excellent faculty mentors have taken my vision and created the world of the play beyond what I had imagined. To the incredible cast: your work is as fine as the best of college productions and in many ways exceeds them. I'm grateful to you all!

My gratitude extends to my colleague and co-choreographer Amy Baker Schwiethale. What a joy it is to collaborate with her! The same goes for music director, Phil Taylor, and intimacy director, Molly Tully. Endless thanks to you!

This may not look exactly like other *Pippin* productions you've seen. But we hope it will give you a different insight into this fantastic material.

Thanks for being here and supporting the work of Wichita State's School of Performing Arts!

~ *Richard Biever*

Content Disclosure

The Wichita State University's production of *Pippin* contains adult language and themes. There are depictions of sexual situations, self-harm, physical violence, and death in addition to discussions of suicide with brief mentions of religious groups/religious trauma. This show uses light flashing effects.

SONGS

Act I

Magic to Do	Leading Player, Ensemble
Corner of the Sky	Pippin
War is a Science	Charles, Pippin, Ensemble
Glory	Leading Player, Soldiers, Ensemble
"Manson Trio" Original Broadway Choreography by Bob Fosse	
Corner of the Sky (Reprise)	Pippin
Simple Joys	Leading Player
No Time at All	Berthe, Ensemble
Choreographed by Richard Biever	
With You	Pippin, Leading Player, Ensemble
Spread a Little Sunshine	Fastrada
Choreographed with Claire Kennard	
Morning Glow	Pippin, Ensemble

Act II

On the Right Track	Leading Player, Pippin
There He Was	Catherine
Kind of Woman	Catherine, Female Chorus
Extraordinary	Pippin
Prayer for a Duck	Pippin, Theo
Love Song	Pippin, Catherine
Corner of the Sky (reprise)	Pippin
I Guess I'll Miss the Man	Catherine
The Finale	Leading Player, Pippin, Fastrada, Ensemble

CAST, CREW, & CREATIVE TEAMS

Cast Members

Pippin	Jaden Kindle
Leading Player	Maurissa Cunningham
Catherine	Ashley Strella
Lewis	Gavin Tanner
Charles	Tim Hampton
Fastrada	Claire Kennard
Berthe	Catie Wolff
Theo	Beau Baxter
Head, Ensemble	Elaine Watson
Ensemble	Wyman Wheeler (Pippin u/s), Sophia Hillman (Leading Player u/s), Christina Noble-Speedie (Catherine u/s), Thomas Yambo-Rios (Lewis u/s), Olivia Biever (Fastrada u/s), Mckenna Lewis (Berthe u/s), Jonathan Banks (Theo u/s), Sophie Pickett, Denver Fankhouser, Carter Stelling, Francie Robu, Lucas Shroyer, Christian Watkins
Swings	Ben Schwartz (Charles u/s), Zoe Phillips

Production / Creative

Director	Richard Biever
Assistant Director	Gabi Johnson
Choreographers	Sophia Hillman, Amy Baker Schwiethale
Music Director	Phil Taylor
Rehearsal Accompanist	JuleAnn Troutman
Intimacy Director/Choreographer	Molly Tully
Stage Manager	Alex Simpson
Assistant Stage Manager	Ella Kempker
Assistant Stage Manager	Jesse Stephenson
Production Coordinator	Melissa Penkava Koza
Technical Director	Ed Baker
Assistant Technical Director	Scott Cockrill
Scenic Designer	Tamara Gagne
Costume Designer	Adia Tolbert

CAST, CREW, & CREATIVE TEAMS

Production / Creative (continued)

Assistant Costume Designer	Dylan Bray
Wig & Makeup Designer	Sarah Bussard
Assistant Wig & Makeup Designer	Jessica Hudson
Lighting Designer	Katelyn Koch
Projection and Graphic Design	Kent Audio Visual
Sound Designer	Denise Ussery
Assistant Sound Designer	Madi Henderson
Props Manager	August Smaglik
Deck/Shift Crew Head	Leo Porcaro
Deck/Shift Crew	Alec Moore, Ian Moore, Will Smith
Props Run Crew	Hayley Longacre
Wardrobe Supervisor	Jade Almsberger
Wardrobe Run Crew	Emily Flowers, Reuben Scheck, Andee Somogyi
Costume Maintenance Crew	Mo Bazar, Madeline Biever
Wigs/Hair/Makeup Preshow	Renae Richmond
Wigs/Hair/Makeup Run Crew	Sky Duncan
Light Board Operator	Cassie Winsler
Head Electrician	Nick Roux
Follow Spot Operator	Jo Smith
Projections Operator	Alyssa Watson
Sound Board Operator/Engineer	Madi Henderson
Audio Assistant	Christian Albin
House Manager	Matthew Gwinner
Ushers	Madeline Biever, Ivy Henderson, Derek Perry, Samantha Zimmerman
Scene Shop Manager	Jason Flanders
Scenic Construction Crew	Denise Ussery, Molly Bazar, Will Smith, Scott Cockrill, Madi Henderson, Trevor Andreasen
Costume Shop Manager	Melissa Penkava Koza
Lead Costume Shop Assistant	Jade Almsberger

CAST, CREW, & CREATIVE TEAMS

Production / Creative (continued)

Costume Shop Assistants	Mia Dennett, Emery Downs, Blake Grimsley, Emma Lewis, Renae Richmond, Adia Tolbert
Program Cover/Marketing Design	Ella Kempker
Prop Shop Assistant/Shop Manager	August Smaglik
Props Construction	Ben Bolinger
Stage Management Mentor	Ed Baker
Scenic Design Mentor	David Neville
Costume Design Mentor	Sarah Bussard
Lighting Design Mentor	David Neville
Sound Design Mentor	David Muehl
Program Design	Sophia Hillman, Stacy Salters
Performance Facilities	David Muehl
Director of the School of Performing Arts	Cheyly Clawson
Assistant Director of the School of Performing Arts	Amy Baker Schwiethale

Orchestra

Musical Director/Conductor	Phil Taylor
Keyboard 1	JuleAnn Troutman
Keyboard 2	Robert Tindle
Violin	Jen Bowen
Bass	Connor Appleman
Reed 1	Milly Harrod
Trumpet	Dalton Williams
Trombone	Michael Dawson
Drums	Lukas Weber

WHO WE ARE



Jonathan Banks

Jonathan Banks (Ensemble) is elated to be making his musical theatre debut at Wichita State University! Previous credits include *The Holiday Special* (Music Theatre Wichita), *The Fox Sisters* (WSU), and *Twelfth Night* (MTW). Jonathan is a first-year student pursuing a BFA in Performing Arts in Musical Theatre and is a member of Shockappella and the Black Student Union.



Beau Baxter

Beau Baxter (Theo), age 9, 3rd grade at Robert Martin Elementary in Andover, KS. Credits include: MTW *Holiday Show 2022*, MTW *Kinky Boots 2022* (Young Charlie). Big brother to Millie, avid reader, Dr. Meg Gray's piano student, Amy Menas' vocal student, wrestler, and baseball player.



Olivia Bieber

Olivia Bieber (Ensemble/Fastrada Understudy) is THRILLED to be making her WSU theater debut! Previous credits include: Jo March (*Little Women*), Belle (*Beauty and the Beast*), Mayzie (*Seussical*), Ensemble/Dance Captain (*Matilda*). Olivia wants to thank the incredible cast and crew, our stellar creative team, and her family and friends for always supporting her. Enjoy the show!



Richard Bieber

Richard Bieber (Director) is in his second semester at WSU as Assistant Professor of Musical Theatre. He is also the coordinator of the Musical Theatre Incubator Program, and last semester directed the first show of that program, *The Fox Sisters*. He has directed dozens of new and established musicals, among his favorites are *Sunday in the Park with George*, *Fun Home*, *Camelot*, and *Cabaret*. He is thrilled to be directing *Pippin* with this amazing group of student designers, stage managers, and performers, as well as their faculty mentors. Special shout outs to student assistant director Gabi Johnson, student co-choreographer Sophia Hillman, faculty choreographer Amy Baker Schwiethale, and music director Phil Taylor.

WHO WE ARE



Dylan Bray

Dylan Bray (Assistant Costume Design) is thrilled to be making their debut at Wichita State University Theatre's production of *Pippin*. Previously, he served as Assistant Costume Designer for *The 25th Annual Putnam County Spelling Bee* (Welsbacher), & worked as part of the costume maintenance crew for *The Scarlet Letter* (WSU). Dylan is a second-year student, working on a BA in Performing Arts emphasis in Theatre and a minor in Graphic Design. He is apart of Empty Space Theatre Student Exec Board & the SPA Marketing Team.



Sarah Bussard

Sarah E. Bussard (Wig & Makeup Designer) is a Wig, Makeup, and Costume Designer and wigmaker with work in theatre (Music Theatre Wichita, Indiana Repertory Theatre, Notre Dame Shakespeare Festival, Merry-Go-Round Playhouse), opera (Sarasota Opera, Virginia Opera, Cincinnati Opera, and Chautauqua Opera, among others), Film, and Video (The America Experience, others). Her recent designs include *The Drowsy Chaperone*, (Music Theatre Wichita), *Raisin in the Sun* (Indiana Repertory Theatre), *The Imaginary Invalid* (Notre Dame Department of Theatre), *Love's Labor's Lost* (Wichita State), *Matrilineage* (Wichita Dance Theatre), and *Metamorphoses* (Taylor University). In addition to her position as Costume Design faculty, Sarah also serves as Program Director for Theatre Design and Production at Wichita State University.



Scott Cockrill

Scott Cockrill (Assistant Technical Director) is an eternal student and enthusiastic lover of the arts in Wichita. His education pursuing a BFA in Performing Arts in Tech and Design has been one of the most important journeys of self discovery. Previous credits include Assistant Scenic Design and Props Crew on *Keepers of the Flame*, Assistant Scenic Design on *Love's Labor's Lost*, *The Scarlet Letter* (Opera), *Go Like Saints*, *Stupid F##king Bird*, as well as *Pippin*. Scott made his design debut with the Bela Kiralyfalvi National Student Playwriting Competition winner, *Happy Wright*. Scott is the Technical Director for the student group Empty Space as well as the Wichita Children's Theatre and Dance Company.

WHO WE ARE



Maurissa Cunningham

Maurissa Cunningham (Leading Player) hails from Kansas City, MO. She is finishing up her last semester at Wichita State University and is pursuing a BFA in Performing Arts in musical theatre. After graduating, Maurissa will be moving to a big city and continuing her dream as a performer. Before she heads out, you can catch her playing Ti Moune in *Once on This Island* at The Forum Theatre.



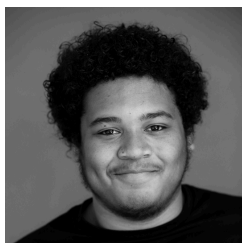
Denver Fankhouser

Denver Fankhouser (Ensemble) is very excited to be returning to the stage at Wichita State University. Previously, he appeared Adam/Felicia in *Priscilla Queen of the Desert* (Roxy's Downtown), Lurch in *Addams Family* (Crown Uptown), Featured Ensemble in *Wedding Singer* (Crown Uptown) and as Fleet in *Titanic* (Forum).



Tamara Gagné

Tamara Gagné (Scenic Designer) is in her fourth semester at WSU. She is working on her BFA in Performing Arts in Technical Theatre so she can become a movie and tv set designer. She graduated from WSU Tech in Spring 2021 with an Associate's degree in Interior Design and she is certified in Kitchen and Bath Design. Previous credits include Lightboard Operator in *Keepers of the Flame*, Assistant Costume Designer in *The Dance Concert*, Scenic Designer in *Go Like Saints*, and Assistant Scenic Designer in *Stupid F##king Bird*. Tamara is looking forward to working on other plays and expanding her knowledge in this field.



Tim Hampton

Tim Hampton (Charles) is a sophomore musical theatre major and is so excited to be in his first musical at WSU. He can't wait to share this beautiful show with an audience. He would like to thank his family and friends for their continuous support and love, as well as his professors for pushing him to grow as a performer and person. Enjoy the show!!

WHO WE ARE



Madi Henderson

Madi Henderson (Assistant Sound Designer & Sound Board Op.) is excited to be working on *Pippin*. This is the first musical in which they have worked sound. They look forward to the challenge. Henderson has previously worked as Sound Designer for *Happy Wright* (WSU) and worked as Sound Technician for several productions at Butler Community College.



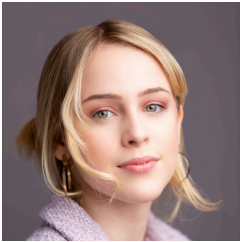
Sophia Hillman

Sophia Hillman (Co-Choreographer, Leading Player u/s, Ensemble) is overjoyed to be back on the WSU stage. Sophia is studying musical theatre and dance. She has been seen in *Twelfth Night* (MTW), *The Color Purple* (Roxy's), and *Rocky Horror* (Crown). Special thanks to the Hillman fam, Amy, and Rich for the faith, trust, and guidance. To keep up with Sophia, follow her Instagram: [@sophiahillman7725](https://www.instagram.com/sophiahillman7725)



Jessica Hudson

Jessica Hudson (Assistant Wig & Makeup Designer) is ecstatic to be working on Wichita State University's production of *Pippin*. Previously, she was the makeup designer for *Stupid F##king Bird* (WSU), and a part of the makeup run crew for *The Scarlet Letter* (WSU). Jessica is pursuing a BA Performing Arts in Theatre with a minor in signed languages and a certificate in directing.



Gabi Johnson

Gabi Johnson (Assistant Director) is honored to work on WSU's *Pippin*! Previous WSU/EST credits include *Anything Goes* (Swing), *The Monty Hall Problem* (Victoria), *The 25th Annual Putnam County Spelling Bee* (Director). Gabi is an upcoming graduate (BA in Performing Arts in Theatre & a Directing Certificate) and Artistic Dir. of Empty Space Theatre - May we honor Danette with our passion.

WHO WE ARE



Ella Kempker

Ella Kempker (Assistant Stage Manager) is excited to be in another Wichita State University show! Previously she could be seen in *Stupid F**king Bird* (WSU) as Nina and last stage managed at Seven Devils New Play Foundry on the original show *Body+Blood*. Ella's goal in everything she does is to make people connect on many different levels. See more of Ella at <https://ellgray2216.myportfolio.com>



Claire Kennard

Claire Kennard (Fastrada) is ecstatic to be back on the Wilner stage. She is a junior pursuing a BFA in Performing Arts in Music Theatre, a dance minor, and a Commercial Dance Certificate. Her previous credits include *The Wedding Singer*, *The Rocky Horror Show* (Janet Weiss), and *A Crown Holiday Spectacular* (Crown Arts Collaborative). Enjoy the show! @claire.kennard



Jaden Kindle

Jaden Kindle (Pippin) is absolutely honored to be playing the role of Pippin. Jaden is currently a junior studying musical theatre and dance. He has been seen onstage in Wichita productions such as *Rent* and *The Wedding Singer* (Crown), *The Color Purple* (Roxy's), and *Twelfth Night* (MTW). Love to the Kindle crew! www.jadenkindle.com



Katelyn Koch

Katelyn Koch (Lighting Design/FX Makeup) is thrilled to be designing Wichita State University theatre's production of *Pippin*. Previous credits include Head Electrician in *Keepers of the Flame* (WSU), Designer/Head Electrician in *Student Choreography Showcase* (WSU) and FX Makeup in *I Need Your Help* (Independent film), currently competing in the Los Angeles Film Awards Semi-finalist. Katelyn is a senior pursuing a Bachelor of Arts in Performing Arts in Theatre with certificates in Movement for the Performer and Film Studies. She is a member of Shocker Sound, Shockers Sound Machine (Student Liaison/Spokes Person), Alpha Phi Fraternity, and Fine Arts Ambassador Coordinator for the School of Performing Arts. Katelyn's mission is to create art however and wherever life takes her.

WHO WE ARE



Mckenna Lewis

Mckenna Lewis (Ensemble/Berthe understudy) is thrilled to be returning to the Wichita State University stage! She is a junior pursuing a BFA in Performing Arts in Musical Theatre and a minor in Dance. Her recent credits include *A Crown Holiday Spectacular* (CAC) and *The Fox Sisters* (WSU). She would like to thank her mentors, family, and friends for their support! Enjoy the show!



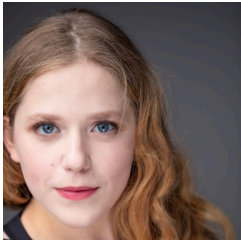
Christina Noble-Speedie

Christina Noble-Speedie (ensemble/Catherine understudy) is a sophomore musical theatre major. You may have seen her as Olive in Empty Space's *The 25th Annual...Spelling Bee*, as well as in *Rocky Horror* and *The Addams Family* at The Crown Uptown Theatre. Next, she will be playing Joanne in *Vanities* directed by Gabi Johnson! You can follow her on Instagram at [@avochrissy](#)



Sophie Pickett

Sophie (ensemble/dance captain) is so excited to be a part of *Pippin*! Sophie is a junior at Wichita State University, credits include *The Fox Sisters* and *The 25th Annual Putnam County Spelling Bee* (WSU), *The Wedding Singer*, and *The Crown Holiday Spectacular* (Crown Arts Collaborative). She is from Casper, Wyoming and loves WSU! Come catch her in *Vanities* at WSU later this season! Follow her on Instagram [@sophiagpickett](#)



Francie Robu

Francie Robu (Ensemble) is excited to be performing again at WSU. She was last seen as Katie in *The Fox Sisters* (WSU), Belinda in *Noises Off* (Newton Community Theatre), and Hope in *Urinetown* (Newton High School). Francie is about to finish her sophomore year and is pursuing her BFA in Performing Arts in Musical Theatre and a BA in English Lit.

WHO WE ARE



Amy Baker Schwiethale

Amy Baker Schwiethale (Co-Choreographer) is a Professor, Program Director of Musical Theatre, and Associate Director of the School of Performing Arts at WSU. Honored by the Kennedy Center for Direction and Choreography of *Smokey Joe's Café*. Choreography Credits: Disney's *My Son Pinocchio*, *Honk!*, *Gypsy & Camelot* (MTW, NYJCP-Alvin Ailey Studios NYC, Prairie Repertory Theatre). Special thanks to Sophia Hillman for such a rewarding and creative choreographic process.



Lucas Shroyer

Lucas Shroyer (Ensemble) was last seen performing with Wichita State University in the musical, *The Fox Sisters*. He is a first-year music theater major and dance minor after transferring from a year at Hutchinson Community College. His favorite previous productions have been *Peter & the Starcatcher* (Hutchinson FCT), *Me and My Girl* (Sterling Community Theater), and *Godspell* (Buhler High School.)



Alex Simpson

Alex Simpson (Stage Manager) is a Senior pursuing a BFA in Performing Arts in Design & Technical Theatre, a certificate in stage management, and a minor in graphic design. Her previous credits include scenic designer for *The Scarlet Letter*, stage manager for *Voices in the Void*, and floor manager for *Thrilled to Announce*. See her work at alexsimpsondesign.com



August Smaglik

August Smaglik (Properties Manager) is honored to be working on Wichita State University Musical Theatre's production of *Pippin*. Previously, they served as a props artisan for the Music Theatre Wichita 2022 Season. They also costume designed *Happy Wright* (WSU) and was props manager for *Stupid F##king Bird* (WSU). August is a junior pursuing a BFA in Performing Arts in Design and Technical Theatre.

WHO WE ARE



Carter B Stelting

Carter B Stelting (Ensemble) is performing his second show here at WSU. He is studying vocal performance and minoring in business. He has participated in theatre regionally and professionally in Kansas City. Carter also sings with Shockappella as the vocal percussionist. He is studying pipe organ and is actively on the cheerleading team here at WSU. Carter gives God all the glory.



Jesse Stephenson

Jesse Stephenson (Assistant Stage Manager) could not be more joyed to be a part of Wichita State University's production of *Pippin*. Previously he has worked on costume maintenance for WSU's recent production of *Stupid F##king Bird*. Jesse is a freshman pursuing a BFA in Performing Arts in Design & Technical Theatre. His mission is to become a mentor for novice theatre technicians.



Ashley Strella

Ashley Strella (Catherine) is thrilled to be back on the WSU stage. Previous credits include *Heathers* (Roxy's Downtown), *Bright Star* (Roxy's Downtown) and *Cool Yule* (The Forum Theatre). Ashley is a senior finishing her BFA in Performing Arts in Musical Theatre with minors in Dance and Exercise Science. She served as President of SPACO from 2021-2022. @ashleystrella



Gavin Tanner

Gavin Tanner (Lewis) is PUMPED for you to see *Pippin*. His previous credits include *Carrie* (Roxy's Downtown) and *The SpongeBob Musical* (Theatre in the Park). He is currently a junior at Wichita State University pursuing a BFA in Performing Arts with an emphasis in Musical Theater.

WHO WE ARE



Aida CB Tolbert

Adia CB Tolbert (Costume Designer) is delighted to be working on WSU's production of *Pippin!* She has previously worked on *A Crown Holiday Spectacular* (Crown Arts Collaborative), and *Go Like Saints* (WSU) as costume designer, and works in WSU's own costume shop. Adia is a junior, and happily over halfway through her BFA Performing Arts in Technical Theatre and Design. Her mission is to create incredible things in as many mediums as possible.



JuleAnn Troutman

JuleAnn Troutman (Rehearsal Accompanist) has performed both as a soloist and collaborative artist throughout the Midwest and in Mexico. She has served as pianist and rehearsal accompanist for WSU Musical Theater productions for the past 19 years and over 30 productions, including the Region V KCACT Festival-selected productions of *Pippin*, *The Wild Party*, and *Smokey Joe's Café*. Her work as Musical Director and Arranger for the World Premiere of *Waltzing in Heaven* was awarded at the 2009 Region V KCACT Festival.



Molly Tully

Molly Tully (Intimacy Director) is a Wichita based actor, director, choreographer, writer, and intimacy professional. Molly was recently the Intimacy Director for WSU's *Stupid F##ing Bird*. Molly's other theatrical intimacy work includes MTW's *Jersey Boys*, *42nd Street*, and *Kinky Boots* along with the CAC's *Next to Normal*, *The Wedding Singer*, and *The Rocky Horror Show*.



Denise Ussery

Denise Ussery (Sound Designer) is thrilled to be working on Wichita State University's production of *Pippin*. Previous credits include lighting designer for WSU's *Happy Wright*, scenic carpenter for WSU's school of music *The Scarlet Letter* (Opera), and sound engineer for *Loves Labors Lost* (WSU). Denise is a junior pursuing a BFA in Performing Arts in Design and Technical Theatre.

WHO WE ARE



Christian Watkins

Christian Watkins (Ensemble) is in his second Wichita State University theatre show. Previous credits include *The Fox Sisters* (WSU), *The Pajama Game* (Butler), & *Sherwood* (Butler). Christian is a junior in college pursuing a BFA in Performing Arts in Musical Theatre. Christian's artistic mission is "to bring entertainment to audiences & to inspire others."



Elaine Watson

Elaine Watson (Ensemble) is a second year vocal music ed and musical theatre dual major. She is stoked to return to the Wichita State University stage after *The Fox Sisters* in the fall. Previous credits include *Heathers* (Roxy's Downtown) and *Half Time Gotta Dance* (Shawnee Mission TIP). Her mission is to encourage audiences to openly experience art outside the box.



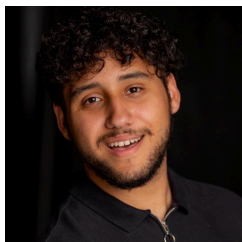
Wyman Wheeler

Wyman Wheeler (Ensemble/Pippin understudy) is thrilled to be a part of *Pippin* at Wichita State! Previous credits include *The 25th Annual...Spelling Bee* (Empty Space Theatre), *Priscilla: Queen of the Desert* and *Carrie the Musical* (Roxy's). Wyman is a junior pursuing a BFA in Performing Arts in musical theater. Wyman would like to thank the *Pippin* creative team, cast, and his wife Emalee.



Catie Wolff

Catie Wolff (Berthe) is a senior musical theatre major here at Wichita State University. Previous credits include, *The Fox Sisters* at WSU, *The 25th Annual Putnam County Spelling Bee* through Empty Space Theatre, and *Keepers of the Flame* at WSU. Follow her on instagram @catie.wolff



Thomas Yambo-Rios

Thomas Yambo-Rios (Ensemble/Lewis understudy) is excited to be in Wichita State University's *Pippin*. Previously, they appeared in *25th Annual Putnam County Spelling Bee* (Empty Space), *Big River* (Roxy's Downtown), and *Elf: The Musical* (The Forum Theatre). Thomas is a junior pursuing a BFA in Performing Arts in Musical Theatre. Enjoy the show!



The Kennedy Center

*The Kennedy Center American College Theater Festival, part of the Rubenstein Arts Access Program, is generously funded by **David M. Rubenstein.***

Special thanks to The Harold and Mimi Steinberg Charitable Trust for supporting the John F. Kennedy Center for the Performing Arts' Kennedy Center American College Theater Festival.

Additional support is provided by The Honorable Stuart Bernstein and Wilma E. Bernstein; and the Dr. Gerald and Paula McNichols Foundation.

Kennedy Center education and related artistic programming is made possible through the generosity of the National Committee for the Performing Arts.

This production is entered in the Kennedy Center American College Theater Festival (KCACTF). The aims of this national theater education program are to identify and promote quality in college-level theater production. To this end, each production entered is eligible for a response by a regional KCACTF representative, and selected students and faculty are invited to participate in KCACTF programs involving scholarships, internships, grants and awards for actors, directors, dramaturgs, playwrights, designers, stage managers and critics at both the regional and national levels.

Productions entered on the Participating level are eligible for invitation to the KCACTF regional festival and may also be considered for national awards recognizing outstanding achievement in production, design, direction and performance.

Last year more than 1,500 productions were entered in the KCACTF involving more than 200,000 students nationwide. By entering this production, our theater department is sharing in the KCACTF goals to recognize, reward, and celebrate the exemplary work produced in college and university theaters across the nation.

**Thank you to all who have
supported *Pippin*.**

Louise Brinegar

Kent Audio Visual

Maddie Butler, Matt Butler and Danny Wise

Harriet Hickman - Musical Director Support

Katelyn Koch

Austin Hancock

**A special thanks to the Trust Company
of Kansas for their generous support.**



• THE •

TRUST COMPANY

MISCELLANEOUS

2022-23 SCHOLARSHIPS

JAMES & CATHERINE BUCK FINE ARTS SCHOLARSHIP

Thomas Yambo-Rios
David Kellam
Dylan Lindsey
Rae Oquendo
Zachary Richardson
Joel Smith

PERFORMING ARTS ANGELS

Andrae Carter
Caitlin Sanders
Mark Barlow
Lillian Porcaro

JULIAENNE W. MASTERS THEATRE SCHOLARSHIP

Adia Tolbert

MILLER TRUST FINE ARTS SCHOLARSHIP

Bailey Buchanan
Hannah Chandler
Madelyn Marshall
Alexandria Nickel
Lille Nightingale
Piper Patterson
Liberty (Warner) Joy
Kaete Mokrynski

JOYCE CAVAROZZI THEATRE SCHOLARSHIP

Alexandra Simpson

STEV OVERSTREET DEAN'S FUND FOR FINE ARTS

Benjamin Schwartz
Mckenna Lewis
Caitlin Wolff
Christian Watkins

ELEANOR DOTY CLAIR SCHOLARSHIP

Matthew Gwinner

KIM STEPHENS EXCELLENCE IN DANCE

Hannah Chandler

AUDREY NEEDLES SCHOLARSHIP FUND

Ella Kempker

JON & K CALLEN MUSIC THEATRE SCHOLARSHIP

Jaden Kindie

MILLER TRUST DRAMA SCHOLARSHIP

Jade Almsberger
Crosby Dold
Matthew Gwinner
Gabrielle Johnson
Ella Kempker
Cristina Noble-Speedie
Emily Redfield
Caitlin Sanders
Benjamin Schwartz
Gavin Tanner
Elaine Watson
Drew Thomas
August Smaglik

CRUM MAINSTAGE THEATRE SCHOLARSHIP

Trevor Andraesen
Dyan Bray
Ashley Grega
Matthew Gwinner
Austin Hancock
Morgan Holcomb
Porter Jones
Bethany Khanu
Lillian Porcaro
Renae Richmond
Adia Tolbert
Denise Ussery

BRET NEFF MEMORIAL SCHOLARSHIP

Alexandra Simpson

ARMSTRONG PERFORMING ARTS SCHOLARSHIP

Jonathan Banks
Denver Fankhouser

MARTHA M. FLEMING DANCE SCHOLARSHIP

Lillie Nightingale

HICKMAN SCHOLARSHIP IN MUSICAL THEATRE

Ashley Strella

RAMSEY SCHOLARSHIP IN MUSICAL THEATRE

Timothy Hampton
Sophia Hillman
Jaden Kindie
Thomas Yambo-Rios

RICHARD C. WELSBACHER THEATRE SCHOLARSHIP

Renae Richmond

TURTLE SCHOLARSHIP FOR DANCE

Bailey Buchanan

RANDAL M. JONES SCHOLARSHIP

Hagan Simmons

GEORGE D. WILNER ACHIEVEMENT AWARD

Gabrielle Johnson

LULU BONAVIA DANCE SCHOLARSHIP

Cobie Reeves
Liberty (Warner) Joy

MUSIC THEATRE SCHOLARSHIP

Sophia Hillman
Claire Kennard
Mckenna Lewis
Frances Robu
Wyman Wheeler

MARJORIE LOIS GRAHAM SCHOLARSHIP

McKenna Lewis
Madelyn Marshall
Gavin Tanner
Gabrielle Johnson
Hagan Simmons

PAMELA J. POSTHER SCHOLARSHIP

Hannah Chandler

ALFRED S. & ESTHER U. PERRY ENDOWED MEMORIAL SCHOLARSHIP

Frances Robu
Benjamin Schwartz
Alexandra Simpson
Madelyn Marshall
Drew Thomas

LINDA STARKEY MUSICAL THEATRE SCHOLARSHIP

Christian Watkins
Dalton Devoe
Sophia Hillman
Sophia Pickett
Alyssa Watson

SCHAEFER, JOHNSON, COX, FREY, & ASSOCIATES SCHOLARSHIP

Dalton Devoe
Sophia Hillman

WHITWORTH THEATRE SCHOLARSHIP

Joel Smith

MARY JANE TEALL THEATRE SCHOLARSHIP

Morgan Holcomb
Renae Richmond

JUNE M. LAIR ENDOWMENT FOR THE ARTS SCHOLARSHIP

August Smaglik

MISCELLANEOUS

PERFORMING ARTS ANGELS

The Performing Arts Angels exist to provide educational and training opportunities for talented dance, musical theatre, and theatre (performance and design/tech) students in the School of Performing Arts - opportunities not funded through the state or university.

The School of Performing Arts faculty, staff, and students recognize and deeply appreciate all their financial support. The support allows the school to fulfill our mission to educate and train students for a career in the arts and entertainment industry. To find out how you can become a Performing Arts Angel and support the School of Performing Arts students, please contact our office at 316-978-3945 or give online at www.wichita.edu/give.

We apologize in advance for any omission or errors in this list. Please bring corrections to the attention of Ann Marie Siegarth at annmarie.siegarth@wichita.edu or 316-978-3945.

Giving for January 2022 - February 2023

PRODUCER (\$1,000 +)

Marty & Donna Perline
Pam Postier
Michael Bayouth
Stev Overstreet
Sally Ottaway
Ed & Danette* Baker *Deceased
Anita Jones
Fred* & Christine Kubik *Deceased
Julie & Stan Longhofer
Margaret Fulton-McKay
Richard & Cynthia Carl
Marlene Hayes
Emily Bonavia
Paul & Michelle Witte
Richard & Debra Campbell
Denny & Sherry Grady
Ltc.(R) Lionel & Tammy Alford

DIRECTOR (\$500 - \$999)

Wes Henderson
Raymond & Diane Gans
Harriet Hickman
Dennis & Genell Arnold
Jane McHugh
Lance & Della Lickteig
Pete & Renea Goforth
Keith & Georgia Stevens
Don & Elizabeth King
Shoko Severt
Rodney Miller & Pina Mozzani
Angela Johnsen & Leon Barnes
John Fishpaw & Kimberly Krohn

CHOREOGRAPHER (\$200 - \$499)

Kelly & Tanja Harrison
Delmar & Mary Klocke
Bill & Pam Lappin
Alan & Sharon Fearey
Dee & Linda Starkey
Louise Brinegar & Gene Carr
Hew & Judy Goodpasture
Wayne Bryan
Walter & Kaye Myers

John & Mary Shellito
Wendy Hanes
Pam Bjork
Richard Muma & Rick Case
Deborah Gafvert & Kenneth Gibbs
Nancy Anderson
Nathan and Melissa Miller
Michael Klaassen & Gerri Colgan

DESIGNER (\$100 - \$199)

Eric Engstrom
Stephen Sowards & Jane Wilcox
Dean Cleverdon & Nancy Nyberg
Ken & Marilyn Pauly
Harold & Evelyn Gregg
Anne Welsbacher
Ward & Nancy Jewell
Johanne Pachankis
Deb Brinegar & John Diel
John & Cindy Carnahan
Lou & Mallory Medvene
Steven & Kitchel Woods
James & Lisa Vayda
Ann Marie Siegarth
Nancy Wood
Kathleen Moore
Joanna Castillo
Sarah Wallace

PERFORMER (\$25 - \$99)

Jay Pfeiffer & Kimberly Engber
Rob Simon & Denise Jackson-Simon
Teresa Veazey
John Goering & Krysti Carlson-Goering
David Johnsen
Alexandra Levine
Maguns & Marena Assarsson
Aaron & Rebekah Winter
Nadia Karim
Lacy Draznik
Jeremiah Johnsen
Mary Alice Johnsen
David Johnsen, Sr
Liz Massey
Jamie Shelton



COMING
SOON

THEATRE PROGRAM FILM

COMPENDIUM

APRIL 21-22

APR

APR

FEATURING CHARLOTTE BOYE-CHRISTENSON

WICHITA CONTEMPORARY DANCE THEATRE

APRIL 27-30



COMPENDIUM

AN ANTHOLOGY FILM
COMING APRIL 2023
PRESENTED BY
WICHITA STATE
UNIVERSITY THEATRE
& FILMMAKING

*WHERE TIME AND SPACE COLLIDE INTO THE UNCERTAIN
THREADS OF THE FUTURE...*

WICHITA STATE UNIVERSITY THEATRE PRESENTS "COMPENDIUM" TREVOR ANDREASON SKY DUNCAN CARSON EDIGER
ASHLEY GREGA MORGAN HOLCOMB CAT KEE ELLA KEMPKER HAYLEY LONGACRE IAN MOORE EMILY REDFIELD
RENAE RICHMOND JO SMITH STEVEN SOETJIDADI DREW THOMAS **** JESSE NIGHTINGALE JILLIAN TERRELL
TIMA TRUONG & BRET JONES **** BRET JONES JESSE NIGHTINGALE ROBERT THOMAS & MASON VIETTI

Student Choreography
Showcase



MISCELLANEOUS



WICHITA STATE
UNIVERSITY

COLLEGE OF FINE ARTS

School of Performing Arts



@wchitastateperformingarts



@wchitastateperformingarts



@WSU_SPA



wichita.edu/performingarts

BECOME A PERFORMING ARTS ANGEL!

Visit wichita.edu/give to become a member online with credit card,
or complete this form, enclose a check (payable to the WSU Foundation/
Performing Arts Angels) and
send by mail to 1845 Fairmount, Campus box 2 Wichita, KS 67260.

- | | |
|--|------------|
| <input type="checkbox"/> PRODUCER | \$ 1,000 + |
| <input type="checkbox"/> DIRECTOR | \$ 500-999 |
| <input type="checkbox"/> CHOREOGRAPHER | \$ 200-499 |
| <input type="checkbox"/> DESIGNER | \$ 100-199 |
| <input type="checkbox"/> PERFORMER | \$ 25-99 |

Name _____

Address _____

City _____

State _____ Zip _____

Phone _____



— JOIN US FOR OUR —
2023 SEASON



**ROCK
OF
AGES**

MAY 31-JUNE 4

**Red
White
AND
BROADWAY**

JULY 1-4

DISNEY'S
**Beauty
and the
BEAST**

JULY 26-30

**R&T
IME**

AUGUST 16-20

Cats

SEPTEMBER 6-10

**SEASON
TICKETS**
— AND —
GIFT CERTIFICATES
**ON SALE
NOW**

DEFINITELY BROADWAY
— UNIQUELY WICHITA —

316.265.3107 | mtwichita.org