

**Department of Public Health Sciences
Health Science Program
Assessment Report 2010 (AY 09-10)**

Goal One Develop a broad understanding of social and scientific principles necessary for a career in the health sciences.

Goal Two Obtain the clinical foundation required to work in entry-level health science positions and/or to advance into graduate health profession education.

Goal Three Explore the political, legal, social, multicultural, and ethical issues that impact on the practice of healthcare.

Program Objective(s)	Assessment Methods/Data Sources	Responsibility	Results/Changes
1. The HS program will ensure a high quality curriculum which remains current and relevant to the complex health services environment.	The program will conduct program/curriculum reviews annually, to include: <ul style="list-style-type: none"> - Peer review of courses - Student evaluations - Other course evaluations, if utilized - Curriculum/Graduate surveys - Current literature occupational trend review - Mission statement review - Employer surveys (every 1-03 yrs) - External advisory committee input 	Dept Chair & Program Faculty	-This report is reflective of the first year of the program (as it started fall 2009). Available evaluations were reviewed throughout the academic year (attachment A) and the overall program was reviewed during faculty meetings. The advisory committee did not meet during the 09/10 AY. Curricular exit surveys are planned for fall 2010. It was determined to require NSG 325 (EBP), in place of HMCD 644 (which had not been developed as planned).
2. The HS program will maintain a minimum of 25 students.	The program will monitor results of recruitment and marketing activities. <ul style="list-style-type: none"> - Admittance numbers - Review of marketing and recruitment activities - Review of admission policies - Review of application materials 	Dept Chair & Program Faculty	- Per KBOR, program on track in terms of majors (n=60). Minimum required=25. There have been 2 graduates (minimum 10/yr). Since this is a new program, minimum number of graduates will not be met until AY 12/13). - Employer surveys are planned for 2013.

**Department of Public Health Sciences
Health Science Program
Assessment Report 2010 (AY 09-10)**

Program Objective(s)	Assessment Methods/Data Sources	Responsibility	Results/Changes
<p>3. The HS program will foster practical educational experiences among students, alumni and preceptors in health organizations that will enable students to demonstrate skills for future employment and responsible community participation.</p>	<p>The program will assess quality and quantity of practical educational experiences.</p> <ul style="list-style-type: none"> - Practica evaluations, student and preceptor. - Evaluation of other courses utilizing applied learning experiences 	<p>Dept Chair & Program Faculty</p>	<p>-Available evaluations were reviewed throughout the academic year (attachment A). -Midterm and final evaluation forms were completed by preceptors. Students completed evaluation of practicum experiences. Summary results reveal the evaluations to be adequate.</p>
<p>4. The HS program will seek to improve graduation rates and decrease attrition rates.</p>	<ul style="list-style-type: none"> - Student attrition - Number of graduates - Graduation rates - Student failure rate in courses - Review of advising processes 	<p>Dept Chair & Program Faculty</p>	<p>-Program data and policies were reviewed throughout the year (attachment B). 60 majors (minimum required =25) and had <u>2</u> graduates AY 09-10 (see note above about the number of graduates).</p>

**Department of Public Health Sciences
Health Science Program
Assessment Report 2010 (AY 09-10)**

Goal Four Develop skills for continuing professional growth and lifelong learning.

Program Objective(s)	Assessment Methods/Data Sources	Responsibility	Results/Changes
1. The HS will hire and maintain a highly qualified faculty to teach and advise undergraduate students.	Faculty records will be reviewed annually. <ul style="list-style-type: none"> - FAR - Disciplinary actions - Faculty attrition - Faculty publications and research grants - Adjunct faculty review (diversity, etc.) 	Dept. Chair	Evaluations were reviewed by the department chair. Teaching evaluations and scholarly and service productivity was viewed as adequate for the number of faculty (n=6). (attachment C). -During CY 2009, 8 grants submitted. -8 grants funded at \$374,032. -3 publications. -8 presentations.
2. The HS program will support the growth of HEALTH, a student organization committed to serve as a community-based association for students working together to improve health education and promote delivery of well-diversified and high quality health care.	HEALTH activities will be reviewed annually. <ul style="list-style-type: none"> - Number of students participating - Number of types of activities - Outside funding obtained, if any 	Dept Chair & Program Faculty	-6 events. -35 students participated. -65 contact hours.
3. The HS program will partner with the University and broader community of health professionals in order to promote healthy communities.	The program will monitor faculty and student participation in service activities. <ul style="list-style-type: none"> - HEALTH activities - Service activities of faculty and students 	Dept Chair & Program Faculty	-856 community service hours provided by faculty.

**Department of Public Health Sciences
Health Science Program
Assessment Report 2010 (AY 09-10)**

Goal Five Develop skills that prepare students to interact as professionals within a diverse, interdisciplinary health care environment.

Goal Six Expand interdisciplinary understanding and collaboration among the health professions.

Program Objective(s)	Assessment Methods/Data Sources	Responsibility	Results/Changes
1. The HS program will support the use of Healthy Options for KS Communities (HOP), a health education, training, and outreach center, for student learning experiences.	The program will conduct an annual review of student participation in HOP. - Number of students participating in HOP - Number of student practica related to HOP - # of student assistantships, etc.	Department Chair & Program Faculty	-62 students participated. -14 practica students. - 840 student contact hours.
2. The HS program will monitor diversity.	The program will monitor diversity. - Documentation activities	Department Chair & Program Faculty	Assessment of these activities are ongoing.
3. The HS program will incorporate diversity in its curriculum where appropriate.	The program will assess curriculum for inclusion of diversity. - HMCD 344, The Role of Culture in Health Care offered annually. - Course review of diversity inclusion	Department Chair & Program Faculty	-17 new diversity activities included in program curricula. -Student body: <u>26%</u> non-white; <u>74%</u> white, which is above the rates for the College, University, local community, and State of Kansas.

Goal Seven Apply scientific knowledge, humanistic values, critical analysis, and a systematic approach to solving problems.

Program Objective(s)	Assessment Methods/Data Sources	Responsibility	Results/Changes
1. The HS program will encourage student participation in the WSU undergraduate research forum and other scholarly activities.	The program will assess student participation in research activities. - Number of students participating in UG research forum - Number of student projects published and/or presented.	Department Chair & Program Faculty	-4 students attended the BACCHUS Area Conference in Kansas City, MO.

**Department of Public Health Sciences
Health Science Program
Assessment Report 2010 (AY 09-10)**

Program Objective(s)	Assessment Methods/Data Sources	Responsibility	Results/Changes
2. The HS program will support faculty engagement in research.	The program will assess faculty engagement in research activities. <ul style="list-style-type: none"> - Number of research grants submitted - Number of research grants funded - Number of faculty publications 	Department Chair & Program Faculty	See page 4

Goal Eight The HS program will ensure efficient and effective program operations consistent with the college, University and the profession.

Program Objective(s)	Assessment Methods/Data Sources	Responsibility	Results/Changes
1. The HS program will develop and maintain student, faculty and program policies consistent with the standards of the college, University and the profession.	The program will conduct an internal program review in regard to program administration. <ul style="list-style-type: none"> - KBOR self-study - Admission policies and procedures - Student and faculty records - Admission and selection criteria - Fair practice policies Student grievance/progression policies - UG catalog/Student handbook 	Dept Chair & Program Faculty	Program review date scheduled for 2016.
2. The HS program will maintain program operations to ensure program effectiveness and efficiency.	The HS program will assess personnel, financial and physical resources annually. <ul style="list-style-type: none"> - Annual resource review (personnel, capitol equipment, etc.) 	Dept Chair & Program Faculty	Ongoing.

Shared drive:HSMD/Administration/Program Assessment/Assessment Reports/HS/HS Assessment Report 2010.doc

Department of Public Health Sciences Health Science Program Assessment Report 2010 (AY 09-10)

HEALTH SERVICES MANAGEMENT COMMUNITY DEVELOPMENT WICHITA STATE UNIVERSITY - IDEA COURSE EVALUATION RESULTS FALL 2009, SPRING 2010, SUMMER 2010 HMCD COURSES Attachment A

	FALL	2009	IDEA												Totals	Average
	310	310	325	344	352	403	428	458	460	470	481	625	648			
1	3.8	*	4.1	4.4	4.7	3.7	4.5	3.5	*	*	*	*	4.6	33.3	4.2	
2	3.9	*	4.7	5.0	4.9	4.6	4.7	3.6	*	*	*	*	4.9	36.3	4.5	
3	3.7	*	4.3	5.0	4.8	4.5	4.7	3.6	*	*	*	*	4.9	35.5	4.4	
4	3.8	*	4.5	5.0	4.9	4.6	4.7	3.6	*	*	*	*	4.9	36	4.5	
5	3.8	*	4.3	4.8	4.8	4.2	4.6	3.6	*	*	*	*	4.8	34.9	4.4	

Key: 1=low; 2=low average;
3=average;4=high average; 5=high
* Not done or not offered

Line 1 - Progress on relevant objectives; Line
2 - Rating as a teacher; Line 3 - Course rating;
Line 4 - Average of line 2 and 3; Line 5 -
Summary

	SPRING	2010	IDEA												Totals	Average
	331	331	331	310	325	326	330	344	352	354	423	470	623	812		
1	3.7	3.7	3.7	*	4.7	*	*	3.9	4.9	4.0	4.8	3.9	4.5	4.3	46.1	4.2
2	4.0	4.1	3.7	*	4.8	*	*	3.8	5.0	4.2	5.0	4.8	4.8	4.5	48.7	4.4
3	3.9	4.2	3.6	*	5.0	*	*	3.8	4.9	3.7	4.9	4.6	4.7	4.2	47.5	4.3
4	4.0	4.2	3.7	*	4.9	*	*	3.8	5.0	4.0	5.0	4.7	4.8	4.4	48.5	4.4
5	3.9	4.0	3.7	*	4.8	*	*	3.8	5.0	4.0	4.9	4.3	4.7	4.4	47.5	4.3

† Some courses evaluated with SPTE

			SPTE			
SP10	SP10	SP10	SP10	SP10	SU10	SU10
310	326	330	642	804	327	458
1.9%	1.4%	1.9%	1.4%	67.6%	47.1%	74.7%

**Department of Public Health Sciences
Health Science Program
Assessment Report 2010 (AY 09-10)**

Attachment B

ENROLLMENT (SCH)

**Health Science Enrollment (H28H)
Enrollment (Head Count)**

CY	Actual	White	Non-White
FL 10 SP11	73	77%	23%
FL09 SP10	25 53	74% 78%	26% 22%

Health Sciences Credit hours (20th day)

Semester	FL10	FL 09
SCH	1,257	1,134

Spring Enrollment (20th Day)

Semester	SP 10
SCH	1,188

Summer Enrollment (20th Day)

Semester	SU 10
SCH	279

**Department of Public Health Sciences
Health Science Program
Assessment Report 2010 (AY 09-10)**

GRADUATION DATA

2010 Health Science Graduation Numbers

Semester	No
FL 09	0
SP 10	0
SU 10	2
Total	2

HEALTH SCIENCE COURSE PASS RATES

TERM: Summer 2010

HS Course (Instructor)	Students (Number Enrolled)	Completed (#/%)	Passed (#/%)
301 – Hale	24	24/24=100%	21/24=88%
301 – Hale	52	47/52=90%	34/47=72%
331 – Hunter	51	50/51=98%	50/50=100%
400 – Elder	34	33/34=97%	28/33=85%

HS COURSE PASS RATES

TERM: Spring 2010

HS Course (Instructor)	Students (Number Enrolled)	Completed (#/%)	Passed (#/%)
301 – Hale	86	79/86=92%	67/79=85%
301 – Brizendine	93	85/93=91%	65/85=76%
331 – Hunter	53	52/53=98%	48/52=92%
331 – Hunter	50	49/50=98%	45/49=92%
331 – Hunter	50	45/50=90%	42/45=93%
400 – Pietti	144	112/144=78%	96/112=86%
711 – Hale	56	56/56=100%	56/56=100%

HSMCD Course Pass Rates

Term: Summer 2010

HMCD course (Instructor)	Students (# enrolled)	Completed (#/%)	Passed (#/%)
327 – Bukonda	31	31/31=100%	31/31=100%
333 – Ham	22	22/22=100%	20/22= 91%
458 – Brandes	26	26/26=100%	24/26= 92%
460 – Brandes	14	14/14=100%	11/14= 79%

**Department of Public Health Sciences
Health Science Program
Assessment Report 2010 (AY 09-10)**

HSMCD Course Pass Rates

Term: SPRING 2010

HMCD course (Instructor)	Students (# enrolled)	Completed (#/%)	Passed (#/%)
308 - Cohen	35	34/35 = 97.1%	34/34 = 100%
310 - Bukonda	26	25/26 = 96.2%	23/25 = 92%
325 - Drassen-Ham	33	31/32 = 96.9%	23/32 = 71.9%
326 - Bukonda	62	55/62 = 88.7%	47/55 = 85.5%
330-Bukonda	22	20/22 = 90.9%	19/20 = 95%
344- Pickard	30	30/30 = 100%	25/30 = 83.3%
352 - Stephen	23	23/23 = 100%	22/23 = 95.7%
354-Pickard	32	28/32 = 87.5%	25/28 = 89.3%
Spring 2010	Continued		
423 - Drassen-Ham	27	25/27 = 92.6%	23/25 = 92.6%
460 - Brandes	9	9/9 = 100%	8/9 = 89.9%
470- Drassen-Ham	6	6/6 = 100%	6/6 = 100%
478 - Stephen	31	31/31 = 100%	28/31 = 90.3%
623 - Drassen-Ham	19	18/19 = 94.7%	17/18 = 94.4%
642 - Bukonda	35	32/35 = 91.4%	30/32 = 93.8%
808 - Drassen-Ham	6	6/6 = 100%	6/6 = 100%
812 - Stephen	7	7/7 = 100%	7/7 = 100%

**Department of Public Health Sciences
Health Science Program
Assessment Report 2010 (AY 09-10)**

HSMCD Course Pass Rates

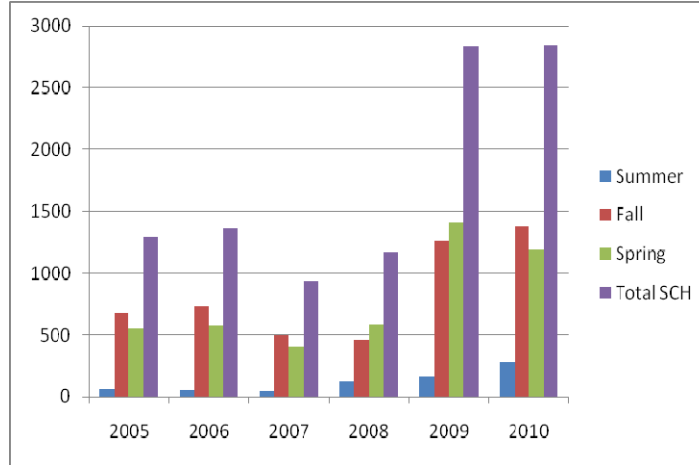
Term: Fall 09

HMCD course (Instructor)	Students (# enrolled)	Completed (#/%)	Passed (#/%)
310-Muma	57	55/57=96%	45/55=82%
310-Bukonda	27	26/27=96%	23/26=88%
325- Drassen-Ham	41	39/41=95%	34/39=62%
330-Bukonda	21	17/21=81%	17/17=100%
333- Drassen-Ham	37	31/37=84%	30/31=97%
344- Drassen-Ham	30	28/30=93%	26/28=93%
354-Pickard	31	27/31=87%	27/27=100%
403-Brandes	26	26/26=100%	26/26=100%
428-Stephen	32	31/32=97%	29/31=94%
460-Brandes	3	3/3=100%	3/3=100%
470-Stephen	14	14/14=100%	14/14=100%
490-Bukonda	1	1/1=100%	1/1=100%
625B- Drassen-Ham	27	26/27=96%	25/26=96%
648-Bukonda	8	8/8=100%	8/8=100%
660-Brandes	2	2/2=100%	2/2=100%
808- Drassen-Ham	3	3/3=100%	3/3=100%
814-Brandes	4	4/4=100%	4/4=100%
816- Drassen-Ham	8	8/8=100%	8/8=100%

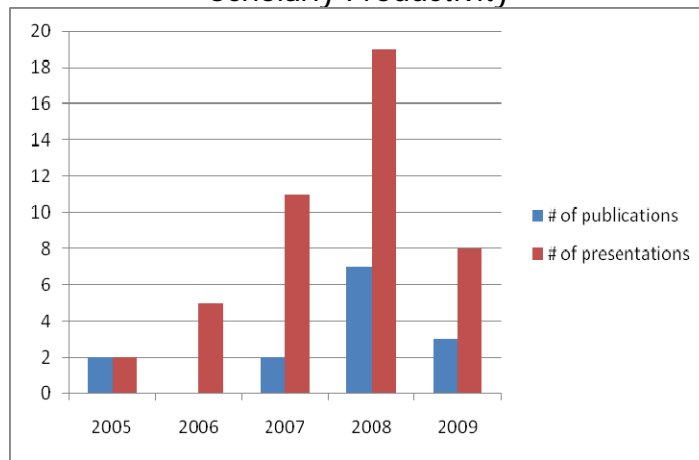
**Department of Public Health Sciences
Health Science Program
Assessment Report 2010 (AY 09-10)**

Attachment C

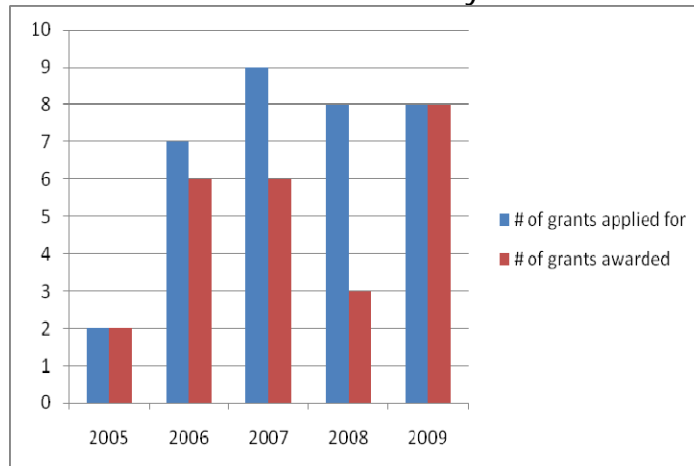
Credit Hour Production



Scholarly Productivity

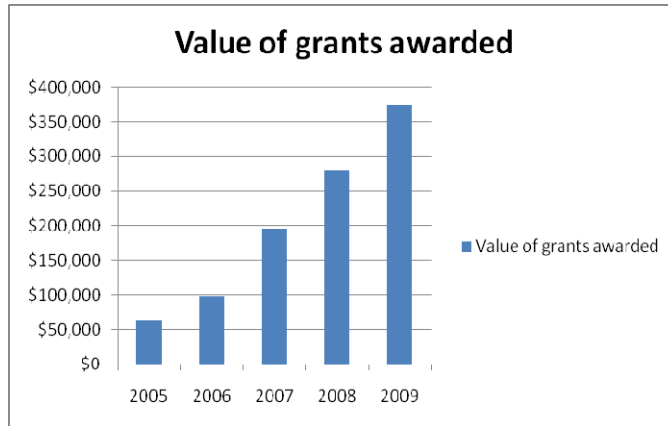


Grant Productivity



**Department of Public Health Sciences
Health Science Program
Assessment Report 2010 (AY 09-10)**

Grant Awards



Community Service

