



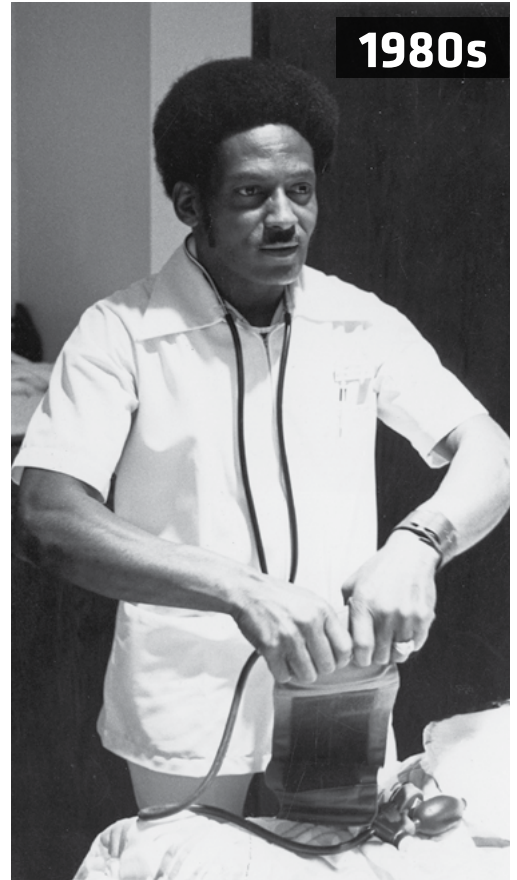
WICHITA STATE  
UNIVERSITY



2021



1970s



1980s



2013

# ANNUAL REPORT



2000s



1990s

COLLEGE *of* HEALTH  
PROFESSIONS

2021





## The College of Health Professions (CHP) is pleased to feature some of our history on the cover of our annual report.

Clockwise from top left:

- ➔ Nursing alumni Kayli McDiffett, David Ramos, and Ravyn Pickens (2021)
- ➔ Nursing students (1970s)
- ➔ CHP student (1980s)
- ➔ CHP faculty with child (1990s)
- ➔ CHP graduates (2003)
- ➔ Physician Assistant student Chris Ganious (2013)

Find more photos at [wichita.edu/CHPphotoalbum](https://wichita.edu/CHPphotoalbum).

# MEANINGFUL WORK. UNLIMITED IMPACT.

From bench to bedside, from clinic to community to populations, our goal is to shape health care leaders for the 21st century.

Our students, faculty and staff do real work that impacts health care, the economy, and the vitality of our communities.

## Excellence in Education

### Preparing tomorrow's health care leaders

We offer 27 health professions programs from undergraduate through doctoral levels. Our Physician Assistant, Dental Hygiene Degree Completion and Advanced Education in General Dentistry are the only programs of their kind in Kansas.

### Community Impact

Our patient-serving clinics provide affordable, quality care to our community and hands-on learning experiences for students.

### Applied Learning

A major focus of our college is ensuring that our students have extensive opportunities for applied learning.

### Professional Success

Graduates enjoy high post-graduation employment rates and exceptional success in advanced careers.

# ABOUT US

## Vision

*Leading Change in Healthcare Education.*

## Mission

*To improve the health of the community by engaging students, faculty, staff, and the larger community in the preparation of healthcare leaders, scholars, and professionals.*

### Leadership Updates

The College of Health Professions was pleased to [announce Dr. Debra Pile](#) as the chair for the School of Nursing and associate dean for Nursing Practice. Dr. Pile succeeded Dr. Voncella McCleary-Jones, who assumed the role of associate dean for Academic, Faculty and Student Affairs for the CHP.



## ABOUT THE NEW CHAIR AND ASSOCIATE DEAN FOR NURSING PRACTICE

Dr. Debra Pile is a native of Wichita, Kansas. Before joining Wichita State, she served in a variety of roles at Wesley Medical Center, including manager of the Pediatric and Pediatric Intensive Care Units, Pediatric Trauma coordinator and clinical nurse specialist. She holds a master's degree in nursing and a doctorate in nursing practice. Her clinical specialty is pediatrics with a focus on children's asthma and pain management. Dr. Pile has served as the coordinator of the Accelerated Bachelor of Science in Nursing program at Wichita State and has taught in the graduate and undergraduate programs.

*"I am honored to accept the position of chair for the School of Nursing and associate dean of Nursing Practice. I appreciate the support that I received as the interim chair and look forward to continuing our work to move the School of Nursing and the College of Health Professions forward."*

**– Debra Pile, chair and associate dean for Nursing Practice**

## DEPARTMENTS

### SCHOOL OF HEALTH SCIENCES

[Communication Sciences and Disorders](#)

[Medical Laboratory Sciences](#)

[Physician Assistant](#)

[Physical Therapy](#)

[Public Health Sciences](#)

### SCHOOL OF NURSING

### SCHOOL OF ORAL HEALTH

[Advanced Education in General Dentistry](#)

[Dental Hygiene](#)

## LEADERSHIP TEAM

**Gregory Hand** - Dean

**Voncella McCleary-Jones** - Associate Dean for Academic, Faculty and Student Affairs

**Molly Brown** - Assistant Dean

**Lisa Belt** - Chair, Dental Hygiene

**Diana Cochran-Black** - Chair, Medical Laboratory Sciences

**Dean Elledge** - Director, Advanced Education in General Dentistry

**LaDonna Hale** - Chair, Physician Assistant

**Douglas Parham** - Chair, Communication Sciences and Disorders

**Debra Pile** - Chair and Associate Dean for Nursing Practice

**Nicole Rogers** - Chair, Public Health Sciences

**M'Lisa Shelden** - Chair, Physical Therapy

## FACULTY AND STAFF FAREWELLS AND WELCOMES

### NEW FACULTY/STAFF

#### Advanced Education in General Dentistry

John Fasbinder  
Ranjit Ghanta  
Cody Gunnell  
Amrita Khemka  
Randall McVey  
Monali Patel  
Kendra Pickrel  
Brandi Regier  
Anna Rueda  
Prashan Shanthakumar  
Rachael Wiebe

#### Communication Sciences and Disorders

Benjamin Kirby

#### Dean's Office

Marta Warren

#### Dental Hygiene

Ashley Buckner  
Terri Fisher  
Connie Regier

#### Medical Laboratory Sciences

Kyle Osborn  
Aisha Waite

#### Public Health Sciences

Matthew Bogner

#### Nursing

Kimberly Burtch  
Sarah Flora  
Emily Koch  
Michelle Lamp  
Jennifer Thornberry  
Margaret Ward  
Tammy Zimmerman

#### Physical Therapy

Emma Andersen

#### Physician Assistant

Deanna Carrick  
Stephen Lewia  
Julie Slade

### DEPARTED FACULTY/STAFF

#### Advanced Education in General Dentistry

Stacy Greer  
Andrew Swisher

#### Dental Hygiene

Kelly Smith

#### Communication Sciences and Disorders

Ray Hull

#### Medical Laboratory Sciences

Reitha Deiter

#### Nursing

Courtney Carlin  
Rebecca Carter  
Nicole Delimont  
Kelly Hein  
Richard Nold  
Susan Parsons  
Jennifer Rodgers  
Linda Young

#### Physical Therapy

Alex Bacon

#### Physician Assistant

Kim Darden  
Sue Nyberg  
Jeffrey Quinn

#### Public Health Sciences

Steve Kelly



# MESSAGE FROM THE DEAN



Greetings from the College of Health Professions. I hope you enjoy our 2021 Annual Report. Let me share a preview of just a few of the exciting accomplishments you'll find in the 2021 report:

As the impact of COVID recedes, I am excited to see students and faculty returning to campus to continue the amazing work for which the College of Health Professions is known. We are once again engaging with the community and continuing the work of our patient serving clinics.

During the difficult times in 2021, the College continued to strive for excellence in education and began a strategic effort to enhance and improve our educational environment. In that effort, we have implemented a number of initiatives, including major upgrades to our capacity for training through simulation and robotic laboratories, and consolidating our preparatory foundational science courses into the Scientific Foundations Division.

In the past year we've welcomed a "new" university president who is a familiar face to many. President Rick Muma has served WSU for many years in a number of capacities. With Dr. Muma's investiture, he becomes America's first Physician Assistant university president.

We continue to partner with local high schools to foster a pipeline of high school students matriculating at the College of Health Professions and then entering the healthcare industry as healthcare professionals.

We've connected with CHP alumni via email and are sharing some of the rich history of the college through our "virtual family album". We look forward to receiving more photos and stories to add to our collection.

As you will see in the pages that follow, the College of Health Professions continues to realize our vision of "Leading Change in Healthcare Education."

**Gregory Hand**  
Dean and Professor  
College of Health Professions

## DR. RICK MUMA APPOINTED AS WICHITA STATE PRESIDENT

Dr. Rick Muma was appointed the 15th President of Wichita State University in May 2021 and inaugurated in Oct. 2021. President Muma joined the College of Health Professions in 1994 and was a Professor and Chair for the Physician Assistant Program and Department of Public Health Sciences. Dr. Muma made history being the first Physician Assistant to be named president of a university and was recognized with an [article from the Physician Assistant Education Association](#). Muma sees his background as a PA and PA educator as a significant contributor to his success. We are proud to have President Muma as part of the College of Health Professions.



### From the president's perspective, what are the strengths the College of Health Professions brings to promote the mission of the university?

The College of Health Professions goes to the very core of the responsibility of an urban public research university: We serve our community. And health care is fundamental to that service. Even more to the point, CHP educates those medical professionals who will adeptly and passionately administer health care services to our community, our region, and our state.

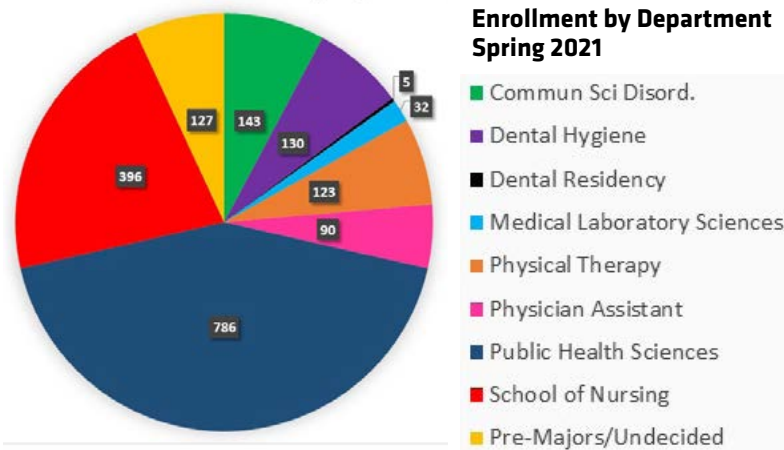
### What knowledge and skills from your physician assistant and public health training benefits you in your role as president?

I think the most important skill I picked up while training and working as a health professional was listening. Whether I'm a medical professional or a university president, listening and truly hearing what a patient, colleague, or student is saying helps me get a full picture and a real understanding of someone's unique perspective and feelings about any given situation.

### With the seismic changes that are happening in health care, how do you see the College of Health Professions realizing its vision of leading in health care education?

Wichita State, WSU Tech, and the University of Kansas are in the early stages of developing a broad vision for the future of health care in Wichita: establishing a Health Sciences Education Center in the heart of Wichita. The HSEC will centralize health care education, collaboration and research from each institution, and students will receive state-of-the-art health care education that will ultimately improve the quality of health and health outcomes for all Kansans. It will also help build an interprofessional community around health care students, faculty and researchers that will nurture and grow a highly trained and proficient health care workforce to serve patients throughout our region and support the prosperity of our state.

## COLLEGE OF HEALTH PROFESSIONS: BY THE NUMBERS



Our **3** community-serving clinics reported over **10,600** appointments in 2021.

**500+**  
students graduated  
in 2021

Over **200**  
employees

**12**  
CHP  
student  
organizations

Over **100** scholarships  
totaling over  
**\$330,000**

Over **65** CHP students in  
the Cohen Honors College

The CHP endowment has over  
**\$17 million** in gifts

The College **exceeds the national examination pass rate average** for Physician Assistant, Dental Hygiene, Medical Laboratory Sciences, Physical Therapy, Speech-Language Pathology, Audiology and Nurse Practitioner.

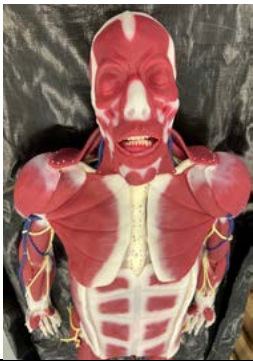
# LEADING CHANGE IN HEALTH CARE EDUCATION

## CLINICAL EDUCATION SIMULATION UPGRADES AND EXPANSION



### College of Health Professions begins expansion of robotic-based clinical simulation technology

The College of Health Professions has started a major expansion of simulation capabilities and facilities. This is the first significant, across-the-board financial investment in new technology for our students in many years, and we are excited about the enhanced ability to train our students. The expanded simulation capabilities will allow students to prepare for real life clinical situations through a range of simulated scenarios that mimic real events. The high-fidelity robotic manikins are sex specific and can be infant, child or adult. Not only can the manikins talk, frown, cry, bleed, go into labor and give birth, but they can also be programmed to simulate disease signs and symptoms. Cameras in the simulation clinics are used for recording activities so that students can review their performances and get real time feedback from faculty instructors watching in an adjacent monitoring room. Read more about our initiative at [wsu.news/simulation](https://wsu.news/simulation).



*"The College has made a strategic decision to expand and enhance the use of robotics and other modes of patient simulation to provide cutting-edge tools to our faculty educators, a truly outstanding educational environment to our students, and the most highly trained professionals entering our healthcare industry."*  
— **Gregory Hand, Dean, College Of Health Professions**

## UPGRADING SIMULATION SPACES

Several areas in Ahlberg Hall are being expanded and remodeled to become new simulation spaces. Notably, the College is developing a human simulation laboratory for the Scientific Foundations Division, a new divisional structure in the College that is comprised of the general health science courses. The lab will consist of five state-of-the-art SynDaver cadaver manikins, ultra-high-fidelity synthetic simulation models that are made entirely out of silicone. SynDavers are extremely realistic synthetic representation of human anatomy and provide the closest alternative to human cadavers. The lab will also feature plastic anatomical models representing different regions of the body, a microanatomy lab with 20 microscopy stations and state-of-the-art audio/visual equipment. This new human simulation lab will enable more classes and students to work on human cadavers and increase the quality of training and education for undergraduate students.

➊ The Department of Communication Sciences and Disorders created the Audiology Simulation Lab, which contains five state-of-the-art audiology simulators and auxiliary equipment.

➋ The Department of Dental Hygiene purchased radiological and anesthesia simulation models and equipment. This equipment will be used for student education, as well as patient care in the Dental Hygiene clinic.

➌ The Department of Physical Therapy has invested in equipment upgrades that support simulation and use of diagnostic ultrasound. The department has purchased new treatment tables, mat tables, and exercise equipment to create a safe and fully accessible learning environment.

➍ The School of Nursing is going through a period of renovation and growth. The simulation labs are being upgraded with new equipment and the creation of a new simulation space with control room and observation areas. Robotic manikins will expand the department's training capabilities through simulation of patient disease signs and symptoms.

➎ The Department of Medical Laboratory Sciences labs underwent a major facelift. The refrigeration rooms were removed and replaced with equipment galleys for new industrial refrigerators and other laboratory equipment. Other upgrades include the purchase of new equipment, including incubators, spectrophotometers, and centrifuges.

➏ The Physician Assistant Program is incorporating intensive simulation activities throughout the curriculum. In addition to thorough training and ultrasound technology, the new advanced simulation training for abdominal, breast, ear, and cardiopulmonary exams will allow students to practice physical exam skills using simulation of normal and abnormal physical findings.

# LEADING CHANGE IN HEALTH CARE EDUCATION



## HIGH-TECH SIMULATION MANIKINS REVOLUTIONIZE AUDIOLOGY EDUCATION

The Department of Communication Sciences and Disorders received a generous gift from Dr. William McCormick in memory of his wife, Deanne, to start the [Audiology Simulation Lab](#) on the lower level of Hubbard Hall. The lab contains five state-of-the-art Canadian Audiology simulator for Research and Learning (CARL) manikins and auxiliary equipment – four adult heads and one infant head. The state-of-the-art CARL manikins provide Doctor of Audiology (AuD) students the autonomy to practice procedures such as making earmold impressions and placing behind-the-ear hearing aids. Two of the manikin heads have tiny cameras embedded in the ear canals, which connect to a laptop and allow the instructor to watch students as they place probe microphones or ear blocks into the canals.

Manikin use standardizes student learning and testing and allows students to gain practical hours through simulation. The manikins are also used in audiology amplification courses to help students prepare to perform tasks on patients at the Evelyn Hendren Cassat Speech-Language-Hearing Clinic.

## COLLEGE OF HEALTH PROFESSIONS CREATES SCIENTIFIC FOUNDATIONS DIVISION

The CHP has consolidated its preparatory scientific courses into the [Scientific Foundations Division](#). The division will include, among others, human anatomy, physiology, pathophysiology, clinical neuroscience. The division is designed to better prepare students for upper division clinical classes and graduate programs. The division will increase the coordination of instruction across the Scientific Foundations Division courses, and will provide a new focus on simulation modeling with robotic technology.

A human simulation laboratory is being developed for the division that will 1) enhance the undergraduate student educational experience through applied learning hands-on skills building; 2) Provide expanded exposure to human anatomy and physiology for graduate students through simulation modeling; 3) provide a unique opportunity to expand the College's partnerships with high school health magnet programs in south central Kansas.

## NURSING GUARANTEED PLACEMENT PROGRAM REPLACES EARLY ADMISSION OPTION

The School of Nursing launched the new Guaranteed Placement Program for high school seniors (formerly the Early Admission Option). Changes to the program include:

- ➊ Increased number of accepted prerequisite hours
- ➋ New, streamlined online application
- ➌ Students are required to work one-on-one with a College of Health Professions advisor for guidance throughout the professional program.

High school students who are accepted into the program and start their college career at Wichita State are guaranteed entry into the traditional BSN program. This popular program appeals to many students because securing a spot in this highly competitive program establishes their higher education path. To learn more visit [wichita.edu/GPP](https://wichita.edu/GPP).

**If you want to support simulation and technology in our College, contact Amy Tully with the WSU Foundation at 316-978-3808 or visit [foundation.wichita.edu/give/](https://foundation.wichita.edu/give/).**



# LEADING CHANGE IN HEALTH CARE EDUCATION

We are leading change in health care education through our innovative culture and passionate faculty and staff who are dedicated to students' success.



## SPEECH-LANGUAGE-HEARING CLINIC AND ENGINEERING COLLABORATE TO IMPROVE CHILD'S COMMUNICATION

Students and faculty at the Speech-Language-Hearing Clinic teamed up with the College of Engineering to engage in a new way to help a 9-year-old child communicate more effectively. The child is a client at the Speech-Language-Hearing Clinic and is considered a complex communicator due to multiple challenges, including physical disabilities, impaired vision, fine motor limitations, seizures and feeding issues. With so many limitations, communication is challenging because many common methods such as speech, writing and signing are not options. The group developed and printed 3D objects that represent common items to help the child communicate his wants, needs, thoughts, and ideas. Their collaborative work was successful, and the team is making more symbols to add to the child's vocabulary and continue to build his system.

## NEW CHP RESEARCH ADVISORY COUNCIL

The College of Health Professions Research Advisory Council (RAC) has been created to foster the success of research in the College. RAC consists of faculty who are active in externally funded research activity. The focus of the council is to plan and implement strategies to increase impactful research across the College. The Research Advisory Council hosted a research planning retreat that included representatives from all the College's departments and the leadership team. Following a recommendation from the research retreat, RAC has recruited a new Grant Technical Writer to work directly with faculty in the College of Health Professions. Having previously worked in WSU's Office of Disability Services, Vicki Forbes joined the College of Health Professions as its first Grant Technical Writer.

## CHP HOSTS INTERNATIONALLY RECOGNIZED EXPERT ON EXERCISE, WEIGHT MANAGEMENT AND HEALTH

The CHP was pleased to host Dr. Timothy Church, M.D., M.P.H., and Ph.D., and Wondr Health chief medical officer (formerly Naturally Slim), for his presentation Five Graphs that will Change Everything You Thought You Knew About Exercise and Health. Dr. Church is one of the country's clinical leaders in exercise and weight management and is quoted frequently in major national media outlets. He has been instrumental in the development of the Wondr curriculum, which is inspired by his medical expertise and has been adopted by 30 states, including the State of Kansas. The College of Health Professions presented Dr. Church with a Keeper of the Plains statuette to thank him for visiting Wichita State.



# IMPACTING THE VITALITY OF OUR COMMUNITIES

## Satellite Nursing Program at Kansas State

Progress has been made on the Wichita State and Kansas State Pathway to Nursing Program, a unique collaboration that will give students the opportunity to earn both a Bachelor of Science degree from K-State, and a Bachelor of Science degree in nursing from WSU. The facilities on the K-State campus have been remodeled and equipped with new supplies and nursing technology. The program and facilities were approved by the Kansas board of nursing and the first cohort will begin in fall 2022.

*"We are extremely excited about this unique partnership with WSU which will bring WSU's excellent nursing program to Kansas State University and help with the growing health care needs of Kansas. This innovative collaboration allows students to receive both an undergraduate degree from K-State and a bachelor's degree in nursing through WSU while remaining on our campus."*

**– Craig Harms, interim dean, College of Health and Human Sciences, Kansas State University**



## Connecting with local high schools

There is a great need among the health care industry in southcentral Kansas and across the Midwest for our graduating health care practitioners. The College's vision is to establish direct pipelines from local high schools through our academic programs in the health care industry. We are building strong relationships with local high school magnet health programs.

A high school advisory council has been created to enrich the partnerships between the College of Health Professions and local high schools with health magnet programs. Members of the high school advisory council include Mary Criss (Northeast), Stanley May (Bishop Carroll), Brittini Mayagoitia (North), Kathleen O'Brien (Derby), and Melody Robinson (West).



*"The Wichita North High School BioMed students love visiting the College of Health Professions. Students learn about health professions degree programs and careers and gain hands-on experiences during their visit. The cadaver lab is the highlight of their day!"* – **Brittini Mayagoitia, A&P Instructor and WSU Alumna**

## Connecting with alumni

The CHP is expanding our efforts to build a strong relationship with our alumni. One example is the creation of the new CHP virtual photo album (view the photo album at [wichita.edu/CHPphotoalbum](http://wichita.edu/CHPphotoalbum)). We have compiled a collection of photos from the last five decades and are excited to share some of our CHP history. If you know any of the people in the photo album, please let us know. We also invite you to send us photos, videos and stories from your time at Wichita State by emailing [chpcontent@wichita.edu](mailto:chpcontent@wichita.edu).

Connect with us on our new [LinkedIn](#) page to find out the latest news, events, photos and more. You can also find us on [Facebook](#) and [Twitter](#).

**If you are interested in hosting the CHP dean at an alumni event, contact Coni Nutter at 316-978- 5661 or [coni.nutter@wichita.edu](mailto:coni.nutter@wichita.edu).**

# PATIENT SERVING CLINICS

Our patient-serving clinics provide high-quality, affordable health care to our community.

## EVELYN HENDREN CASSAT SPEECH-LANGUAGE-HEARING CLINIC

The Cassat Speech-Language-Hearing Clinic provides services to people who have communication difficulties, including speaking, hearing, swallowing, and spoken and written language impairments. [wichita.edu/SLHclinic](http://wichita.edu/SLHclinic)

- ➔ 460 patients seen for 3,088 visits in 2021
- ➔ In addition to traditional speech-language services, the Speech-Language-Hearing Clinic offers area-specific programs and support groups for aphasia, autism, fluency, literacy and more. The Clinic also offers programs for children, including the popular Fluency and Literacy summer camps. Literacy Camp is a fun and engaging program for kids that involves reading, writing and hands-on activities to strengthen children's literacy skills. Fluency Camp is a unique program that helps school-age kids with common speech disorders such as stuttering and cluttering.
- ➔ The Speech-Language-Hearing Clinic repairs and services most hearing aids, regardless of where they were purchased. The Clinic also offers replacement batteries for hearing aids from a variety of hearing aid brands.



## DELTA DENTAL OF KANSAS FOUNDATION DENTAL HYGIENE CLINIC

The Dental Hygiene Clinic offers a wide range of low-cost preventive, therapeutic and educational services. [wichita.edu/DHclinic](http://wichita.edu/DHclinic)

- ➔ 3,281 appointments in 2021
- ➔ The Dental Hygiene Clinic at Wichita State has 24 chairs and is Kansas' largest dental hygiene clinic.
- ➔ The clinic offers dental x-ray services and non-invasive screening. The clinic serves multiple communities, including children and underserved populations.
- ➔ In 2021 the Dental Hygiene Clinic was refurbished with upgraded equipment, new flooring, and a fresh coat of paint.



## WSU'S DELTA DENTAL OF KANSAS DENTAL CLINIC

WSU's dental services include general dentistry, and specialties including periodontics, oral surgery, prosthodontics. [wichita.edu/WSUdentalclinic](http://wichita.edu/WSUdentalclinic)

- ➔ 4,279 appointments in 2021
- ➔ The dental clinic is home to the Advanced Education in General Dentistry program at Wichita State, a one-year postdoctoral educational program for dentists. This is the only dentistry education training in Kansas.
- ➔ The dental clinic has a dedicated simulation lab with 12 state-of-the-art manikins for the continuing education of dentists, dental hygienists, and dental assistants. The lab provides an optimal learning environment for oral health care providers to practice procedures with high precision and quality in a simulated setting. The lab is also used for interprofessional activities with health professions students and high school visits for students who are considering a career in dentistry.



If you want to support the important work of our clinics, contact Amy Tully with the WSU Foundation at 316-978-3808 or visit [foundation.wichita.edu/give/](http://foundation.wichita.edu/give/).

# PATIENT SERVING CLINICS

## GRATEFUL PATIENT PROGRAMS

The CHP is creating Grateful Patient Programs for our clinics. A Grateful Patient Program is an opportunity to foster a culture of gratitude and give patients the opportunity to say "thank-you" with a donation.

The Grateful Client brochure for the Speech-Language-Hearing Clinic has been completed, and brochures are being created for the Dental Clinic and Dental Hygiene Clinic.

*"Our Grateful Patient Programs allow those receiving care at one of our three clinics the opportunity to express their gratitude through philanthropy. Some patients give back in support of individual staff members or clinicians and others are creating access points for countless others in the community to receive care. It speaks well of a clinic that has philanthropic support from past and current patients. In many ways that is the ultimate endorsement." – Amy Tully, Director of Development*

## TRAILBLAZING DUAL ROLE IMPACTS STUDENTS, PATIENTS, AND PROGRAMS

Fueled with passion for students and patients, Brandi Regier splits her time as an instructor in the Department of Dental Hygiene and as a practicing dental hygienist in WSU's dental clinic. Having two positions in one career acts as a bridge between the two dental programs at Wichita State. Her clinical and educational perspective benefits dental hygiene students and patients at the dental clinic. This joint appointment is a model that the College will use to build collaboration across departments and expand interprofessional education opportunities.



*"...Having two positions into one career, I am always on my toes diving into various opportunities whether it be engaging into interdisciplinary activities with the College of Health Professions, educating my students on instrumentation technique and/or establishing rapport with my patients and educating them on ways to improve their oral health. Each facet I partake in continues to shape and inspire me to be the best dental hygienist and teacher I can be for my students and patients."*  
– Brandi Regier, Assistant Educator in Dental Hygiene and Dental Hygienist at WSU'S Dental Clinic



# COMMUNITY ENGAGEMENT

## Physical Therapy students volunteer to get children moving

Each semester Physical Therapy students volunteer their time and skills for WSU GoBabyGo, a program that modifies ride-on toy vehicles for kids with disabilities. Physical Therapy students collaborate with WSU Engineering students and community partners to customize and deliver cars at no cost



to the family. This is a wonderful applied learning experience that brings cheer and mobility to local children with disabilities.

## Dental residents and dental hygiene students volunteer to provide free dental services

Each year residents and faculty from the Advanced Education in General Dentistry program and students in the Dental Hygiene program volunteer their time and services at the annual Kansas



Mission of Mercy (KMOM) event. KMOM is a charitable dental clinic providing free oral healthcare to those in need.

## Nursing students graduate from Dedicated Education Unit at Wesley

The School of Nursing and Wesley Medical Center celebrated the first students to graduate from Wesley's Dedicated Education Unit (DEU). These students spent their fall semester working in the Ortho-Spine Unit receiving individualized training from clinical preceptors. The students say the DEU helped to enhance their nursing skills and build more confidence providing patient care. The DEU is a new collaboration between Wesley and the School of Nursing that is focused on students receiving



individual attention through their clinical rotation by pairing a nursing student to the same clinical preceptor for the entire semester.

## Dental Hygiene students distribute Smile Kits to the community

The Dental Hygiene department distributes Smile Kits to encourage dental health in our community. Smile Kits are provided by Delta Dental of Kansas and includes a toothbrush, toothpaste and floss in a reusable plastic pouch. Dental Hygiene students distributed Smile Kits and educational information to elementary schools, senior centers, and a variety of underserved populations to help improve oral health outcomes in the region.

# SUPPORTING SHOCKERS THROUGH SCHOLARSHIPS

## CHP WELCOMES NEW DEVELOPMENT OFFICER

The College of Health Professions is excited to welcome Amy Tully, Director of Development for the CHP.



## Message from the CHP Director of Development



Contact Amy Tully:  
316-978-3805 or [amy.tully@wichita.edu](mailto:amy.tully@wichita.edu)

I was born and raised in Wichita, KS, and received my BA in Integrated Marketing Communications from WSU in 2008. While a student, one of my fondest experiences was serving on Student Government. I've been working in philanthropic development for 14 years. In 2018 I joined the WSU Foundation to serve as the Director of Development for the College of Liberal Arts and Sciences and made the transition to support the CHP in Aug. 2021. I am a marathon runner and my husband, Greg, and I have a 4-year-old son, Easton.

I am ecstatic to serve in the role of Director of Development for the College of Health Professions. It's a privilege to work with friends and alumni to raise money to further the vision of excellence for the College of Health Professions. Please reach out if you would like to share your story or discuss how you can support the College of Health Professions and make a difference for our students and community.

With Shocker Pride,

Amy Tully

The CHP greatly appreciates each and every one of our supporters. Every gift, large or small, is important and contributes toward our mission to improve the health of our communities. Here are a couple of examples of our generous donors.

### Medical Laboratory Sciences program receives generous endowed scholarship

The Medical Laboratory Sciences department has received a \$280,000 endowed scholarship gift from Southcentral Pathology. Dr. Joel Alderson, president of Southcentral Pathology in Wichita, established this fund to provide two full-ride scholarships each year in WSU's Medical Laboratory Sciences program. This is the largest scholarship donation ever made to the Medical Laboratory Sciences program.



### Foster family leaves \$2.2 million gift for nursing scholarships at Wichita State

The WSU Foundation received a generous gift of \$2.2 million from the trusts of Charlotte and Brian Foster to the School of Nursing. This generous gift will provide approximately \$80,000 in awards each year for nursing students.

To support our community engagement activities, contact Amy Tully with the WSU Foundation at 316-978-3808 or visit [foundation.wichita.edu/give/](https://foundation.wichita.edu/give/).



# DEAN’S ADVISORY COUNCIL

The Dean’s Advisory Council (DAC) met for the first time in person with Dean Hand on the WSU main campus in Oct. 2021. The focus topics of the meeting included 1) Increasing CHP’s Impact in the Community; 2) Challenges in Recruiting Clinical Practice Sites; and 3) Strategies for Increasing Philanthropic Support for CHP. The DAC members also heard presentations from the chairs of the School of Nursing and Department of Dental Hygiene. The important work done by the DAC greatly impacts the direction of the CHP and is critical to realizing our vision of “Leading Change in Healthcare Education.”

## NEW MEMBERS



**Chad Hanson**  
Senior Vice President with Emprise Bank

Chad Hanson is a Wichita native and a proud alum of Wichita State University. He graduated in 2004 with a Bachelor of Business Administration in Finance. He has held various commercial banking positions within regional and community banks over a 15-year career. Prior to his current role as a Senior Vice President with Emprise Bank, he spent 3-years outside of banking working with a local family office in areas of private equity investment, real estate investment/development/management and retail/manufacturing investment management. His current responsibilities at Emprise Bank include leading the bank’s commercial segment initiatives and managing strategic customer relationships. Emprise, through one of their commercial segment initiatives, has made a substantial commitment to helping medical professionals simplify their financial needs through tailored solutions to the industry’s unique financial situations.



**Robert Kenagy**  
President and CEO of Stormont Vail Health

Robert Kenagy, M.D., a native Kansan, was named President and CEO of Stormont Vail Health in April 2019. He previously served as Senior Vice President and Chief Medical Officer for the organization. Prior to joining Stormont Vail Health in 2016, Dr. Kenagy served as Senior Vice President at St. John Health Network in Tulsa, OK. He also held several leadership positions at Via Christi Health in Wichita, including President and CEO of Via Christi Clinic and Senior Vice President of Physician Services. Dr. Kenagy spent 22 years serving as a family medicine physician. He has a Master’s in Medical Management from Tulane University and received his medical training at the University of Kansas School of Medicine in 1987. Dr. Kenagy completed his Family Medicine Residency through the University of Kansas School of Medicine Wesley Medical Center. Dr. Kenagy is a member of the American Association for Physician Leadership. He serves on the GO Topeka Board of Directors, the Topeka Community Foundation Board, Stormont Vail Health Board, and Stormont-Vail, Inc. Board, Christ’s Hospital Corporation Board, and on the Kansas Hospital Association Board.

## 2021 MEMBERSHIP

**Pamela Clancy Ammar**  
Attorney, President of the Board-Kansas Humane Society, Chair of the CHP Dean’s Advisory Council

**Ambur Alfaro**  
Director of Professional Relations-Delta Dental of Kansas

**Alex Ammar**  
Vascular surgeon, President and CEO-Wichita Surgical Specialists, Professor and Chair-Department of Surgery-University of Kansas School of Medicine in Wichita

**Tim Church**  
Physician and scientist, Chief Medical and Strategy Officer-Naturally Slim, Cofounder and Board Member-Catapult Health

**Chad Hanson**  
Senior Vice President with Emprise Bank

**Carolyn Harrison**  
Nurse, WSU National Advisory Council

**Robert Johnson**  
Senior Pastor-St. Marks United Methodist Church in Wichita

**Robert Kenagy**  
President and CEO, Stormont Vail Health

**Carl Kirkendoll**  
Pastor-Bethany Missionary Baptist Church in Wichita, President-Urban League of Kansas Guild, President-Greater Wichita Ministerial League

**Laurie Labarca**  
Hospital President for Ascension Health-Ascension Via Christi Hospital St. Teresa and Ascension Via Christi Rehabilitation Hospital

**Dan Loon**  
Vice President for Associate Advancement and Education-Legend Senior Living

**Adam Lukens**  
Private practice dentist, Wichita-Sedgwick County Oral Health Coalition, Board of Trustees for the Kansas Dental Association

**Tiffany Masson**  
President and Chief Executive Officer of the Kansas Health Science Center

**David Ramos**  
Emergency Medicine physician for Salinas Valley Memorial Healthcare System in Salinas, CA

**Arthur Ross**  
Pediatric surgeon, former campus executive or Dean for four university based medical schools, academic medicine consultant

**David Todd**  
Cofounder and Owner Advanced Physical Therapy/Physical Therapist

**Bill Voloch**  
President and CEO of Wesley Healthcare

**Tony Waldrop**  
President Emeritus of the University of South Alabama



**Tiffany Masson**  
President and Chief Executive Officer of the Kansas Health Science Center

Tiffany Masson, Psy.D., obtained her doctorate of psychology in 2002. She completed her post-doctoral training at U.C. Davis’ Children’s Hospital-CAARE Center and was employed as a staff psychologist by the Cook County Juvenile Court and Northwestern School of Law in Chicago. For 13 years Dr. Masson serviced at The Chicago School of Professional Psychology where she held several academic and operational administrative positions. Her leadership positions included Department Chair of International Psychology, Executive Director of Social and Behavioral Sciences, and Campus Dean of the Chicago Campus. Most recently, Dr. Masson served as Campus Dean of the Online Campus, where she provided oversight and advanced growth for the institution’s highly successful campus.

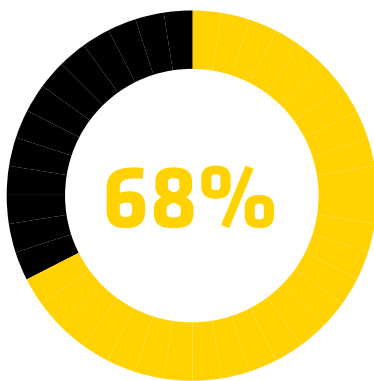


**Tony Waldrop**  
President Emeritus of the University of South Alabama

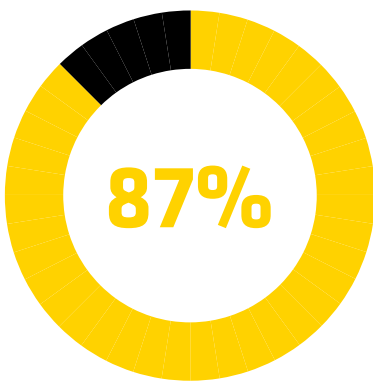
Dr. Tony Waldrop was selected in 2014 as the third president of the University of South Alabama, a position he held until 2021. Dr. Waldrop received his undergraduate education in political science at the University of North Carolina Chapel Hill where he also received a PhD in physiology. After earning his doctorate, he continued his training at the University of Texas Southwestern Medical Center in Dallas as a research fellow in the Cardiopulmonary Division, receiving a National Institutes of Health postdoctoral fellowship at the Moss Heart Center. He held several university leadership positions prior to serving as the President of the University of South Alabama. From 2001 until becoming provost and executive vice president at the University of Central Florida in 2010, he served as vice chancellor for research and economic development at the University of North Carolina at Chapel Hill. Prior to that he was vice chancellor for research at the University of Illinois at Urbana-Champaign.

# STUDENTS

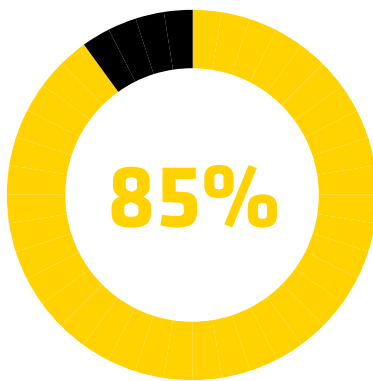
## UNDERGRADUATE STUDENT SNAPSHOT



First-generation college student

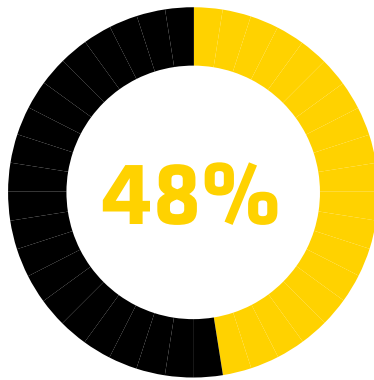


Female students

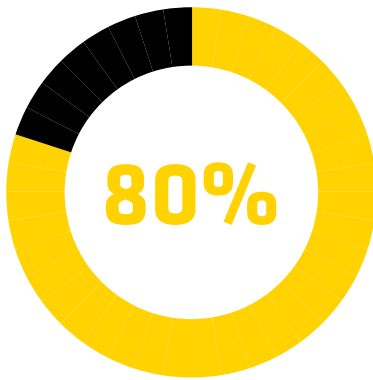


From the state of Kansas

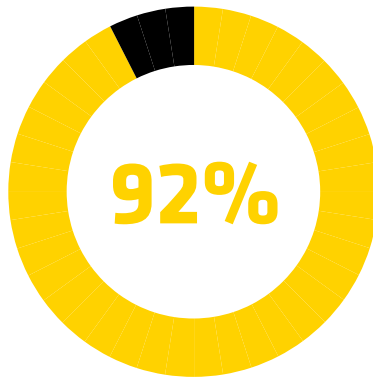
## GRADUATE STUDENT SNAPSHOT



First-generation college student



Female students



From the state of Kansas

➡ In 2021 the CHP Advising Center had over 3,300 student appointments and sent over 6,000 emails, texts and chat messages to students.

# STUDENT SPOTLIGHTS

### HALEY HANSFORD | Physician Assistant

Hayley Hansford is from Kansas City and grew up in a large family as one of six children. She played volleyball competitively and received a scholarship to play at Pittsburg State, where she graduated with her biology degree. Hayley chose to pursue a career in medicine because she loves science and the natural transition from science to medicine. When she began shadowing in the medical field, she found that she also loved the provider-patient relationship, hands-on impact, and the idea of learning forever. Hayley says she appreciates the PA program's commitment to interprofessional education, which provided her with the tools to communicate with other specialties and provide better overall patient care. At WSU Hayley was awarded the Shaw fellowship and the Dora Wallace Hodgson Outstanding Graduate award. She was also inducted into the Wheat Shock Leadership Society and awarded the Wheat Shock Leadership Society Distinguished Graduate award. Hayley graduated from the Physician Assistant program in 2021 and is currently a PA for Kansas City Urology Care. She stays active in local volleyball leagues and volunteers at Camp Encourage, a camp for kids on the spectrum. Hayley enjoys traveling (she has visited 34 countries and hopes to get to 50 by 50) and spending time with her fiancé and dog, Zoey.



### TY SIMONS | Physical Therapy

Ty Simons grew up in the small town of Lincolnville, KS. He played basketball at Hutchinson Community College and earned his bachelor's degree in Economics from Emporia State University. Ty became interested in physical therapy after experiencing an injury in high school. The care and compassion his physical therapist showed inspired Ty to pursue a career where he could help people overcome adversity, feel empowered, and achieve their goals. Ty is involved with WSU GoBabyGo and helped coordinate a stretching program for a patient with Facioscapulohumeral Muscular Dystrophy. In 2021 he traveled with the Team USA Paralympic Wheelchair Tennis team to Italy for the World Team Cup. He also served as a Graduate Teaching Assistant and Curriculum Representative. Ty says WSU's Physical Therapy program has an advantage over other programs because of the diverse faculty who have experience in nearly every setting of physical therapy. He says the program is truly invested in students and creates an inclusive environment with many opportunities for experiential learning. Ty will graduate in May 2022 and plans to pursue a job in the Early Intervention Pediatric Physical Therapy setting. For fun Ty likes to hike, paddleboard, go to concerts, and spend time with my family and friends.



### MADELINE SHONKA | Public Health Sciences

Growing up Madeline Shonka has always been sick; from birth through high school, she was diagnosed with pneumonia, swine flu, mononucleosis, lupus and narcolepsy with cataplexy. Her dream was to become a doctor and create a company to provide tools, connections, and education to the chronic illness community. However, during her freshman year of college, she became extremely sick and at times was unable to walk or talk. As she shared her story, she realized other people were going through similar experiences, but because they had "invisible diseases," they did not talk about it. In 2019 she created a company, [Co-Immunity Foundation](#), and was accepted to E-Launch through Wichita State's Center for Entrepreneurship. Madeline's awards include the Women for Innovation Award, Wichita Startup Week Pitch Competition, Wichita Business Journal's Innovator of the Year, Wichita Business Journal's 5 under 25, and KAKE Wins for Kansas. Madeline has been able to work through her chronic illnesses by utilizing accommodations from Disability Services and open communication with her amazing instructors in the Public Health Sciences department. Madeline is an alumna of Gamma Phi Beta and is passionate about volunteering in the community. Madeline plans to graduate in May 2022 and continue to grow Co-Immunity. Madeline enjoys being active, especially with her two dogs, Finn and Stella.





# STUDENTS

## Living Learning Community

Students who live on campus and are interested in health professions have an exciting opportunity to join a community of diverse learners and ambitious leaders. The Living Learning Community provides the opportunity for students to make lifelong friendships, develop a sense of belonging at Wichita State, and networking in the health care industry. Members have many opportunities to participate in service projects and unique academic experiences and interact with CHP faculty and industry leaders. LLC members live in Shocker Hall, a state-of-the-art residence hall located in the heart of campus.



"The College of Health Professions LLC is a unique opportunity for students to live with others who are learning alongside them now to create better interprofessional workspaces in the future. Students in the LLC become connected quickly and closely through class study groups, industry tours, volunteer work, and social events hosted throughout the year." — **Taygen Altenburg, Resident Assistant**

# SCHOLARSHIPS

The College of Health Professions has over 90 scholarships totaling over \$320,000. Learn more at [wichita.edu/CHPScholarships](http://wichita.edu/CHPScholarships).

## Sherr Scholarship awarded to 7 CHP students

The CHP was proud to [announce the winners](#) of the Sam & Rosemary Sherr Dean's Excellence Award (Scholarship/Fellowship) for academic year 2021-22. Each year all departments granting academic degrees in the CHP nominate one student for the Sherr Scholarship Award. The scholarship winner is awarded \$10,000 and all other student nominees receive \$4,000.

### Sherr Scholarship \$10,000 Award Recipient:

- ➡ Rola Khaleel, Communication Sciences and Disorders.

### Sherr Scholarship \$4,000 Award Recipients:

- ➡ Sarah Buie, Public Health Sciences
- ➡ Angel Holguin, Medical Laboratory Sciences
- ➡ Dane Mitchell, Physician Assistant
- ➡ Rosangela Pino-Alonso, Dental Hygiene
- ➡ Brooke Schutte, Physical Therapy
- ➡ Lydia Schwertfeger, School of Nursing

## CHP students serve on WSU's Student Government Association

Each year CHP students volunteer their time to serve on the Student Government Association (SGA). Thank you to these CHP students for serving the student body and Wichita State community.

- ➡ David Liu Health Professions Senator
- ➡ Edie Reese, Health Professions Senator
- ➡ Olga Lesnik, Health Professions Senator

"Thanks to the Sherr Scholarship, I'm able to direct my focus on the clinical application, as part of my final year in the Audiology program, and worry less about the financial aspects of my education. It positively influenced my educational success and I'm so grateful. I look forward to being able to give back to this amazing community at WSU."

— **Rola Khaleel, Audiology student**



# SELECT PUBLICATIONS, PRESENTATIONS, GRANTS, AND AWARDS

## PUBLICATIONS

**Bogner, M.P.**, Ivanitskaya, L.V., Jeong, Y.R., DeLellis, N.O. (2021). Nursing staff member experiences with household model implementation in a nursing home setting. *Geriatric Nursing*, Vol. 42, pp. 748-755.

Brennan, M. A., Browning, J. M., Spratford, M., **Kirby, B.**, & McCreery, R. W. (2021). Influence of aided audibility on speech recognition performance with frequency composition for children and adults. *International Journal of Audiology*, 60, 849-857.

**Celso J.** Musculoskeletal-related dysfunctions of the pelvic floor. In: **Manske, R.** *Fundamental Orthopedic Management for the Physical Therapist Assistant*. 5th ed. Mosby/Elsevier; 2021: 543-567.

**Chesser A.** Green J, Norton M, Rogers N. Assessment of Student Knowledge and Opinions of Older Adults and Aging: A pilot study. *Journal of Family Medicine and Disease Prevention*. 2021;7:140. <https://doi.org/10.23937/2469-5793/1510140>

**Chesser A.**, Vargas N., **Keene Woods N.**, Bowen A., **Hawley, S. R.** (2021). Mental health literacy in women: a systematic review. *Kansas Nurse*. 96(1), 6-19.

**Delimont, N. M., Carlson, B.N., S. Nickel**, (2021). Dental Caries Are Associated with Anemia in Pediatric Patients, *J Allied Health*, Spring 2021;50(1):73-83

**Hawley, S. R.**, et. ak. (2021). Concerns of college students during the COVID-19 pandemic: thematic perspectives from the United States, Asia, and Europe. *J Applied Learn Teach*, 4(1), 11-20.

Heick J, Haggerty J, **Manske RC.** A Comparison of Resting Scapular Posture and the Davies Closed Kinetic Chain Stability Test. *International Journal of Sports Physical Therapy*. 2021;16(3):835-843. DOI: 10.26603/001c.23425.

**Keene Woods, N.**, Vargas, I., McCray-Miller, M., **Drassen Ham, A., Chesser, A.K.** (2021). SARS-CoV2, the COVID-19 Pandemic and Community Perceptions. *Journal of Primary Care and Community Health*, 12, doi:10.1177/2150132721995451

**Keene Woods N.**, Vargas I., McCray Miller M., **Drassen Ham A., Chesser A.** SARS-CoV2, the COVID-19 Pandemic and Community Perceptions. *International Journal of Environmental Research and Public Health*. 2021;12:1-5 <https://doi.org/10.1177/2150132721995451>

Koschwanetz H., **Harrington J.**, Fischer M.L., Beck E., Kennedy M. Certified Nurse-Midwives in Rural Kansas Hospitals: A Survey of Senior Hospital Administrators. *J Midwifery Womens Health*. 2021 Jul;66(4):512-519. doi: 10.1111/jmwh.13201. Epub 2021 Mar 4. PMID: 33661560

**Manske RC**, Jones DW, Dir CE, LeBlanc HK, Reddy MA, Straka MA, Demel K, Prohaska D, Mendez G, **Smith, BS.** Grip and Shoulder Strength Correlation with Validated Outcome Instruments in Patients with Rotator Cuff Tears. *J Shoulder Elbow Surg*. 30: 1088-1094, 2021

**Manske, R.C.** (ed). *Manske's Fundamental Orthopedic Management for the Physical Therapist Assistant*, 5th ed. Mosby, St. Louis, 2021.

**Marble-Flint, K.**, Steiner, H., Elliott, A., & Stein, M. (2021). Implementing Words Their Way with an adolescent who uses AAC: A case study. *Literacy Information and Computer Education Journal (LICE)*, 12(1), 3480-3485.

**Musaji, I.**, Roth, B., Coufal, K., **Parham, D. F.**, & **Self, T. L.** (2021). Comparing in-person and telepractice service delivery for spoken language production and comprehension using the National Outcomes Measurement System. *International Journal of Telerehabilitation*, 13(1), 1-13.

Rundell S, Maitland M, Beneck G, **Manske RC.** A Survey of Physical Therapists' Attitudes, Knowledge, and Behaviors Regarding Diagnostic Imaging. *Physical Therapy*. 2021; 101:1-11: DOI: 10.1093/ptj/pzaa187.

**Self, T. L.**, Batchelor, D., & **Parham, D. F.** (2021). Part C early intervention providers' knowledge of Autism Spectrum Disorder prior to and following ASD-specific training. *International Journal for Cross-Disciplinary Subjects in Education*, 12, 4386-4396.

**Self, T. L.**, Francois, J., & Coufal, K. (2021). Caregivers' Evaluation of an Interprofessional Family-Centered Early Childhood Program. *Clinical Research and Trials*, (7), 1-7.

Showstack, R., Duque, S., **Keene Woods, N.**, Lopez, A., & **Chesser, A.K.** (2021). Uniting Spanish-speaking Latinx Voices: A Community-engaged Approach to Health Equity. *Multilingua*. doi.org/10.1515/multi-2021-0082

Siddiqui, H., Rattani, A., **Keene Woods, N.**, Cure, L., Lewis, R. K., Twomey, J., Smith-Campbell, B., & Hill, T. (2021). A Survey on Machine and Deep Learning Models for Childhood and Adolescent Obesity. *IEEE Access*, 9, 157337-157360, doi: 10.1109/ACCESS.2021.3131128

Vargas I, **Keene Woods N.**, Bennett C, Pulari J, McCray Miller M, **Chesser A.** The Women's Health Network: A evaluation of a community-based initiative. *Journal of Family Medicine and Disease Prevention*. 2021;7:136. <https://doi.org/10.23937/2469-5793/1510136>

For information about supporting our students through scholarship donations, contact Amy Tully with the WSU Foundation at 316-978-3808 or visit [foundation.wichita.edu/](http://foundation.wichita.edu/).

PRESENTATIONS

Batchelor, D., **Self, T.**, & **Parham, D.F.** (September, 2021). *A model for integrating interprofessional ASD screening, evaluation, and referral practices into EI and ECE programs.* Kansas Speech-Language-Hearing Association, Wichita, KS.

Brandenberger, T., Zwanziger, M., Nidiffer-Tull, A., Wheeler, P., & **O'Bryan, E.** (2021, October). *Effects of computerized sentence building on language performance and quality of life.* Research poster at the Kansas Speech-Language-Hearing Association Convention, Wichita, KS.

Carmichael, C., Mandulak, K. C., & **Parham, D. F.** (2021, April). *Interviewing processes for facilitating holistic admissions in graduate programs* [Invited virtual conference session]. Council of Academic Programs in Communication Sciences and Disorders Annual Conference.

Chavira, J., **Marble-Flint, K., Parham, D. F., Novak, C.,** & Mason Cramer, K. (2021, February). *A survey of Kansas speech-language pathologists' knowledge and confidence regarding literacy intervention.* [Virtual poster presentation]. Capitol Graduate Research Summit, Topeka, KS, United States.

Chavira, J., **Marble-Flint, K., Parham, D. F., Novak, C.,** & Mason Cramer, K. (2021, September–October). *A survey of Kansas speech-language pathologists' knowledge and confidence regarding literacy intervention* [Virtual poster presentation]. Kansas Speech-Language-Hearing Association (KSHA) Annual Conference.

Chleborn, S. M., **Parham, D. F.,** Plexico, L., & Theodore, R. M. (2021, April). *Diving into the CSDCAS data: Benefits to programs, universities, and the profession* [Invited virtual conference session]. Council of Academic Programs in Communication Sciences and Disorders Annual Conference.

Engber, K., **Parham, D. F.,** Vizzini, A., & Redger-Marquardt, C. (2021, October). *Past, present, and future of departmental honors: Models and outcomes in a public university* [Conference session]. National Collegiate Honors Council Annual Conference, Orlando, FL, United States.

Holmes, B., & **Sun, X.-M.** (2021, April). *Response Criterion for Determining Acoustic Reflex Thresholds Using a 1000-Hz Probe Tone.* The 33rd Annual Conference of the American Academy of Audiology [virtual].

Jiang, J., & **Sun, X.-M.** (2021, April). *Comparison of ipsilateral wideband and single-frequency acoustic reflex thresholds in adults.* The 33rd Annual Conference of the American Academy of Audiology [virtual].

Jiang, J., & **Sun, X.-M.** (2021, March). *Ipsilateral wideband and single-frequency acoustic reflex thresholds in adults.* Bulletin of the American Auditory Society (The 48th Annual Scientific and Technology Meeting [virtual].

**Kirby, B.** (2021, April). *Misophonia and Audiology Practice.* Invited talk at Texas Speech-Language-Hearing Association Annual Convention [virtual].

**Marble-Flint, K.,** Koutsoftas, A., & Joffe, S. (2021, November). *Documenting Changes in Intermediate Students' Writing Using a Sentence-level Task via Telepractice: A Pilot Study* [Virtual poster presentation]. American Speech-Language-Hearing Association Annual Conference, Washington, DC, United States.

**Marble-Flint, K.,** Menon, M., Ferricher, J., Roskam, A., & Turner, S. (2021, November). *Literacy Workshops for Children in the Refugee Population from the Democratic Republic of the Congo.* [Virtual poster presentation]. American Speech-Language-Hearing Association Annual Conference, Washington, DC, United States.

**Marble-Flint, K.,** Schneider-Cline, W., Brumbaugh, K., & **Parham, D. F.** (2021, September–October). *Midwest school-based SLPs' knowledge and confidence regarding literacy intervention* [Virtual poster presentation]. Kansas Speech-Language-Hearing Association (KSHA).

**McCleary-Jones, V.** (2021, June). *Leadership in Nursing Education: Lessons Taken from Sun Tzu.* [Keynote Speaker. Leadership Institute. Invited]. Pursuit of Excellence: Innovations in Nursing Education, Research, Practice. Association of Black Nursing Faculty, Inc. 34th Annual Meeting & Scientific Conference [virtual].

**O'Bryan, E.** (2021, October). *A tutorial on evidence-based aphasia treatment.* (Role: Invited presenter). Kansas Speech-Language-Hearing Association Annual Convention, Wichita, KS.

**O'Bryan, E.,** & Brandenberger, T. (2021, November). *Effects of computerized sentence building treatment for people with aphasia.* Annual Convention of the American Speech-Language-Hearing Association, Washington, DC.

**O'Bryan, E.,** Powell, A., Keese, D., & Recker, B. (2021, April). *Aphasia-Friendly Readings: Responsive reading for couples.* Brag and Steal presentation at the Aphasia Access Leadership Summit, Online Conference, University of Wisconsin, Eau Claire.

**Pile, D., Cooper, T., Bett, C., Elder, B.** (2021, August). *Identification and Prevention of Nutritional Decline in Rural Older Adults.* Research poster at the International Rural Nursing Conference [virtual].

**Richburg, C.** (2021, July). KU Area Health Education Center's Virtual Classroom. A Lesson Plan for Healthy Students - What's In Your Backpack? *Causes, Identification, and Treatment of Hearing Loss in Children:* [https://youtu.be/Q6KSgng\\_amk](https://youtu.be/Q6KSgng_amk)

**Richburg, C.** (2021, March). *(Central) Auditory Processing Disorder: Focusing on the Correct Diagnosis, Not the Easy One.* Invited presentation for the Kansas Speech-Language-Hearing Association [virtual].

**Richburg, C.** (2021, March). *Ethics for the Hearing Professional in 2021.* Invited presentation to the Kansas Hearing Society [virtual].

Santos, L., **Marble-Flint, K., & Parham, D. F.** (2021, November). *A comparison of strategies used with bilingual adolescents between school-based and non-school-based speech-language pathologists* [Virtual poster presentation]. American Speech-Language-Hearing Association Annual Conference (ASHA), Washington, DC, United States.

PRESENTATIONS, CONT.

Schneider-Cline, W., **Marble-Flint, K.,** Brumbaugh, K., & **Parham, D. F.** (2021, September–October). *A survey of Midwest speech-language pathologists' comfortability with literacy intervention* [Hybrid poster presentation]. Nebraska Speech-Language-Hearing Association (NSLHA) Annual Conference, Kearney, NE, United States.

Stephenson, C., Weber, M., Wilson, G., Roth, B., **O'Bryan, E., & Musaji, I.** (2021, November). *The experiences of practicing Kansas school-based speech-language pathologists with COVID-19 and telepractice.* Annual Convention of the American Speech-Language-Hearing Association, Washington, DC.

Weber, M., Stephenson, C., Wilson, G., Roth, B., **O'Bryan, E., & Musaji, I.** (2021, October). *The experiences of practicing Kansas school-based speech-language pathologists with COVID-19 and telepractice.* Research poster at the Kansas Speech-Language-Hearing Association Convention, Wichita, KS.

Zwanziger, M., Brandenberger, T., Bailey, B., Nicks, L., & **O'Bryan, E.** (2021, October). *Effects of Aphasia-Friendly Readings: Script training for couples.* Research poster at the Kansas Speech-Language-Hearing Association Convention, Wichita, KS.

FUNDED GRANTS

**Kirby, B.** (2021). *Impact of Psychophysical Paradigm on Spectral Ripple Threshold in Children.* TSHFoundation President's Research Award. (Role: PI, \$1,300).

Lu, H., Kim, Y., & **O'Bryan, E.** (2021). *Interdisciplinary Data Processing in Research Group.* Peer Mutual Mentoring Grant, WSU College of Engineering. (Role: Co-PI, \$900).

**Marble-Flint, K.** (2021). *Wichita State University Summer Literacy Camp 2021.* Dollar General Literacy Foundation. Summer Reading Grant. (Role: Project Director, \$2,000).

Menon, M., & **Marble-Flint, K.** (2021). *Project for All.* United Way of the Plains. Impact on the Plains. (Role: Co-Director, \$25,000).

**Musaji, I.** (2021). *Assessing the Impact of EMR Affordance on Clinician Behavior: A Pilot Study.* Wichita State University Research/Creative Projects Award (URCA). (Role: PI, \$4,500).

**Musaji, I.** (2021). *Implementing the iMotions eye-gaze analysis software suite in the Computer Mediated Communication Lab.* Clifford W. & Leah E. Gaulter Memorial Grant. Wichita State University College of Health Professions. (Role: PI, \$9,200).

**O'Bryan, E.,** & Lu, H. (2021). *Computerized Sentence Building as a Therapy Tool for People with Aphasia.* Multidisciplinary Research Project Award (MURPA), WSU Office of Research and Technology Transfer. (Role: Co-PI, \$7,498).

Santos Rodriguez, L., **Marble-Flint, K., & Parham, D. F.** (2021) *A comparison of skilled strategies used with bilingual adolescents between school-based and non-school-based speech-language pathologists.* Undergraduate Student Research Grant, WSU Dorothy and Bill Cohen Honors College. (Roles: Co-Faculty Sponsors and Co-PIs, \$998).

**Self, T. L.** (2021). Part C. Wichita State University & Rainbows United, Inc.: Part C, Community-Based Screening/ Diagnostic Initiative. Kansas Department of Health and Environment (Role: PI, \$17,000).

CONTINUING GRANTS/FUNDING

**Chesser A.** Kansas Leadership Center: *Aging Studies Organization Health Fair* 8/20/2021-12/30/2022, \$1,500.

**Harrington, J.** (2021-2022) *Midwest HIV Network Curriculum Integration Grant.* Amount: \$10,000 per year.

Hill, T., Cure, L., **Keene Woods, N.,** Lewis, R., Rattani, A. Wichita State President's Convergent Sciences. *To Reduce Obesity Among Vulnerable Populations and Improve Health Literacy as a Mechanism among Health Care Providers for Behavior Change.* 2020-2023, \$300,000.

Uden-Holman, T. [PI], **Hawley, S. R.** [subcontract PI], Wright, K., Grimm, B., & **Armbruster, S.** (2018-22). *Midwestern Public Health Training Center.* Funded by Health Resources and Services Administration (HRSA, Grant # UB6HP27879; \$3,069,880.00).

**CHP AWARDS**

**Hodson Outstanding Research Faculty Award:** Elizabeth Tew (Physical Therapy)

**Rodenberg Faculty Excellence Award:** Karissa Marble-Flint (Communication Sciences and Disorders)

**Outstanding Staff Support Award:** Lisa Clancy (Dean's Office)

**AWARDS**

**State Level Omicron Sigma Award:** Diana Cochran-Black

**Wichita State University Excellence in Online Teaching Award:** Amy Chesser

**Wichita State University President's Distinguished Service Award:** Amy Drassen Ham





---

**COLLEGE OF HEALTH PROFESSIONS AT WICHITA STATE UNIVERSITY**

[healthprofessions@wichita.edu](mailto:healthprofessions@wichita.edu) | 1845 Fairmount Street, Wichita, KS 67260-0043

**WICHITA.EDU/CHP | 316-978-3600**

*follow us:*



---

**NOTICE OF NONDISCRIMINATION**

Wichita State University does not discriminate in its employment practices, educational programs or activities on the basis of age, color, disability, gender, gender expression, gender identity, genetic information, marital status, national origin, political affiliation, pregnancy, race, religion, sex, sexual orientation, or status as a veteran. Retaliation against an individual filing or cooperating in a complaint process is also prohibited. Sexual misconduct, relationship violence and stalking are forms of sex discrimination and are prohibited under Title IX of the Education Amendments Act of 1972. Complaints or concerns related to alleged discrimination may be directed to the Director of Equal Opportunity or the Title IX Coordinator, Wichita State University, 1845 Fairmount, Wichita, KS 67260-0138, telephone (316) 978-3187.