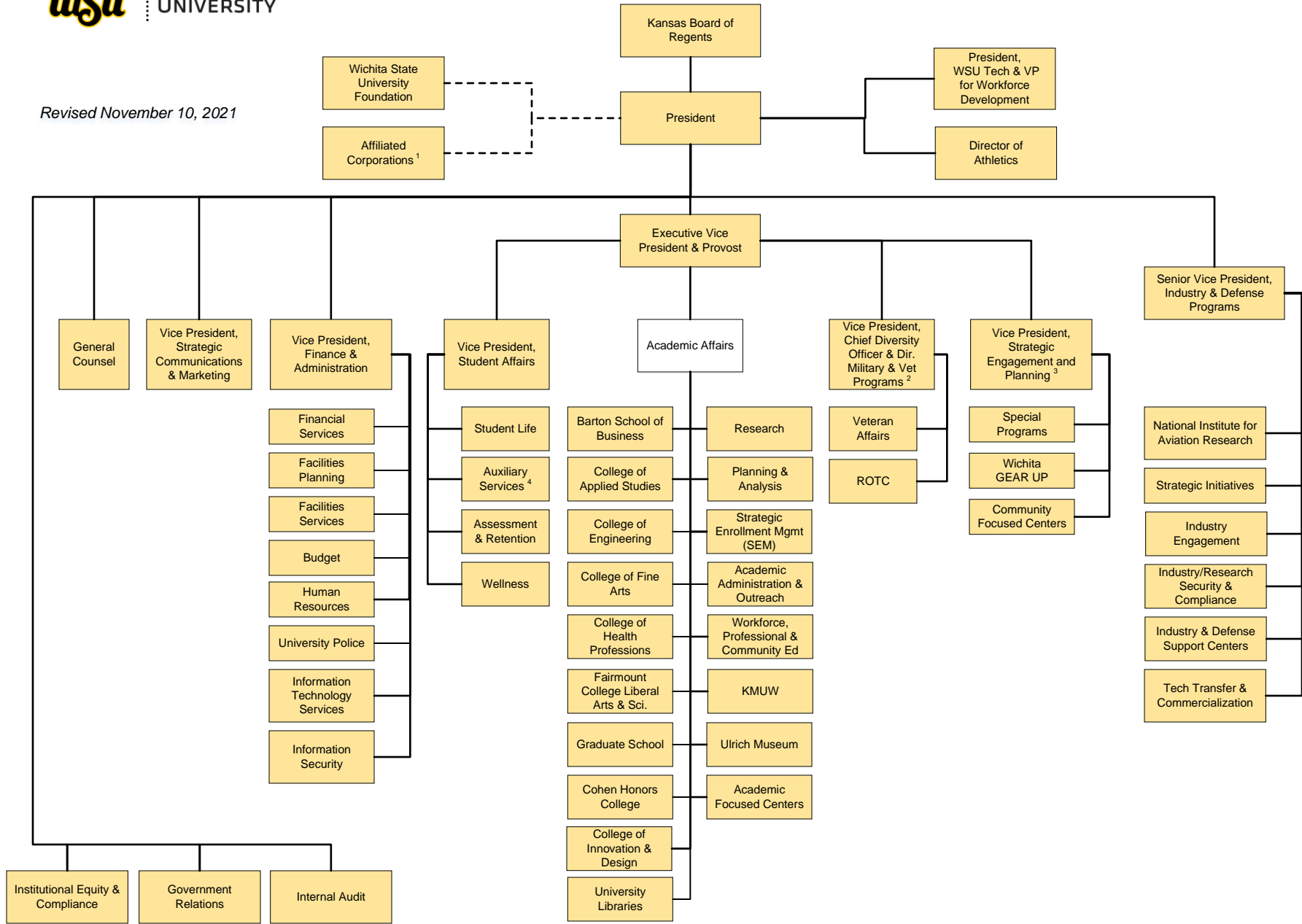


Revised November 10, 2021



1 = Affiliated Corporations, as defined in WSU Policy 1.06, includes: Wichita State Intercollegiate Athletic Association, Inc., Wichita State Union Corporation, Wichita State University Alumni Association, Wichita State University Innovation Alliance, WSIA Investments Corporation.
 2 = Vice President Chief Diversity Officer also reports to the President regarding university diversity efforts.
 3 = Vice President for Strategic Engagement and Planning also reports to the President regarding strategic planning and university engagement.
 4 = Auxiliary Services includes oversight of operations of Wichita State University Union Corporation.