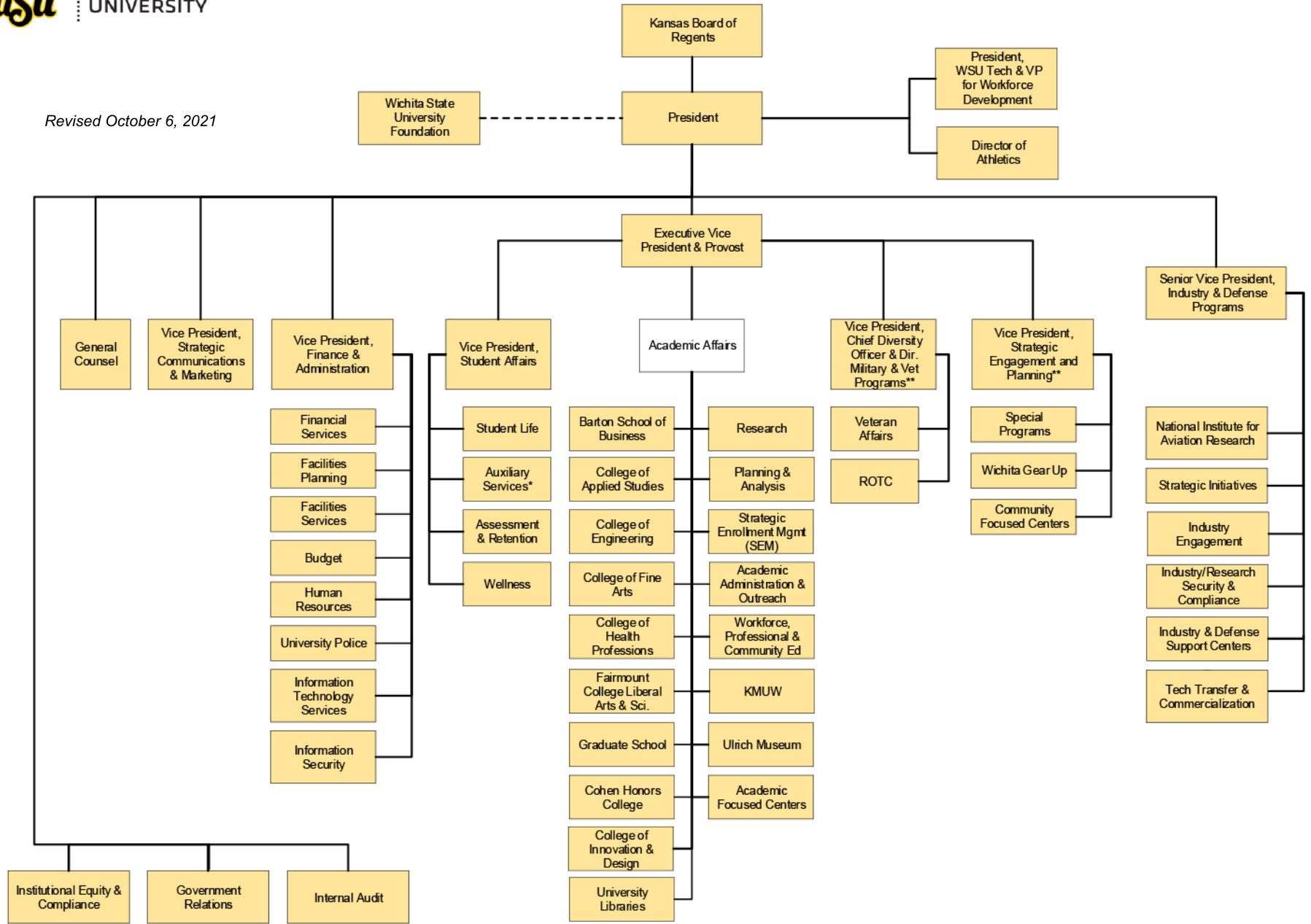


Revised October 6, 2021



\* = Auxiliary Services includes oversight of operations of Wichita State University Union Corporation.

\*\* = Vice President for Strategic Engagement and Planning also reports to the President and President's Executive Team regarding strategic planning and university assessment.

\*\* = Vice President Chief Diversity Officer also reports to the President and President's Executive Team regarding university diversity efforts.