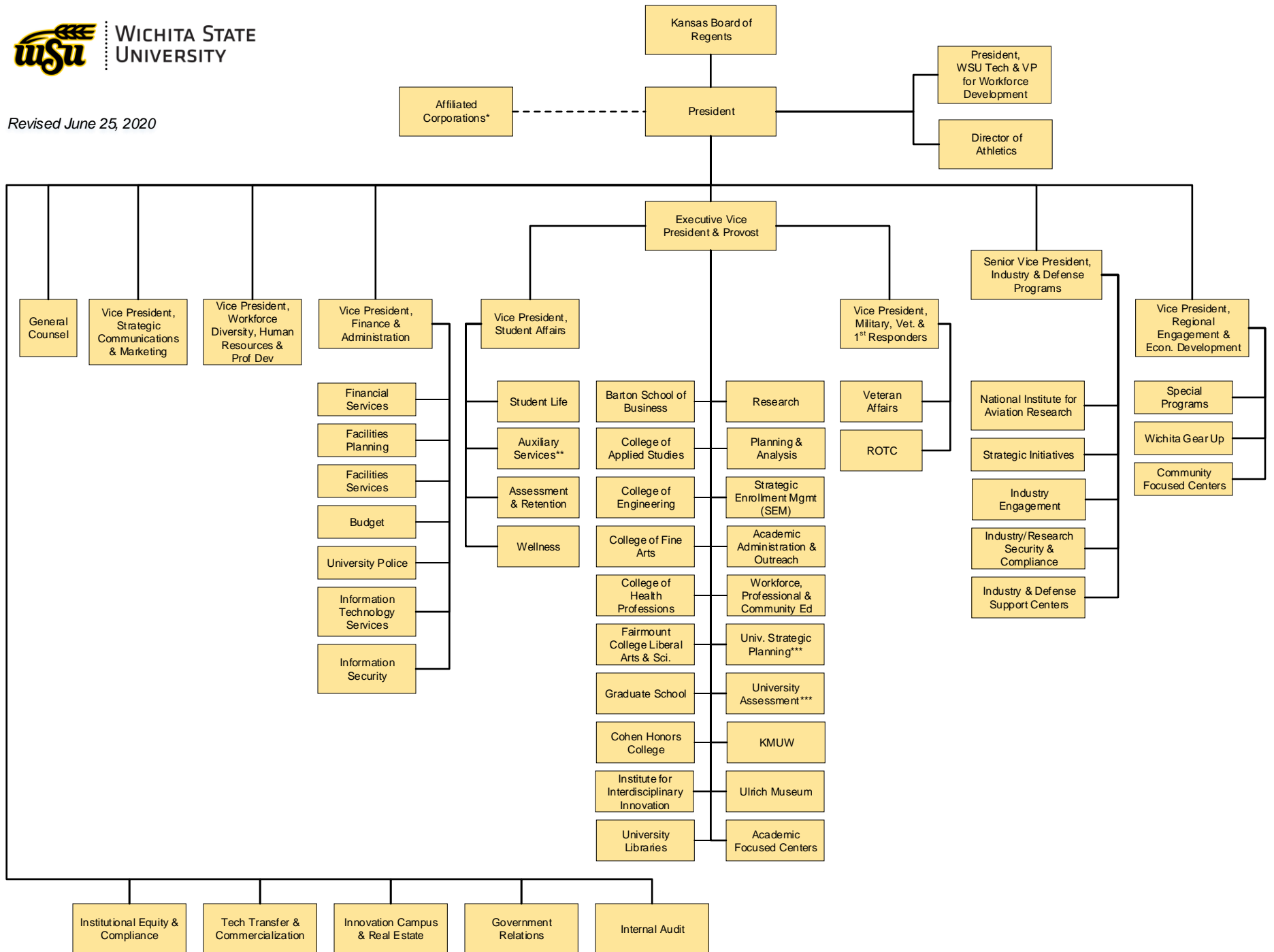


Revised June 25, 2020



* = WSU Foundation; Alumni Association; WSU Board of Trustees; Wichita State Innovation Alliance; Wichita State Innovation Alliance Investments Corporation

** = Auxiliary Services includes oversight of operations of Wichita State University Union Corporation

*** = Strategic Planning & the University Assessment Office are housed in Academic Affairs and reports to the President and the President's Executive Team