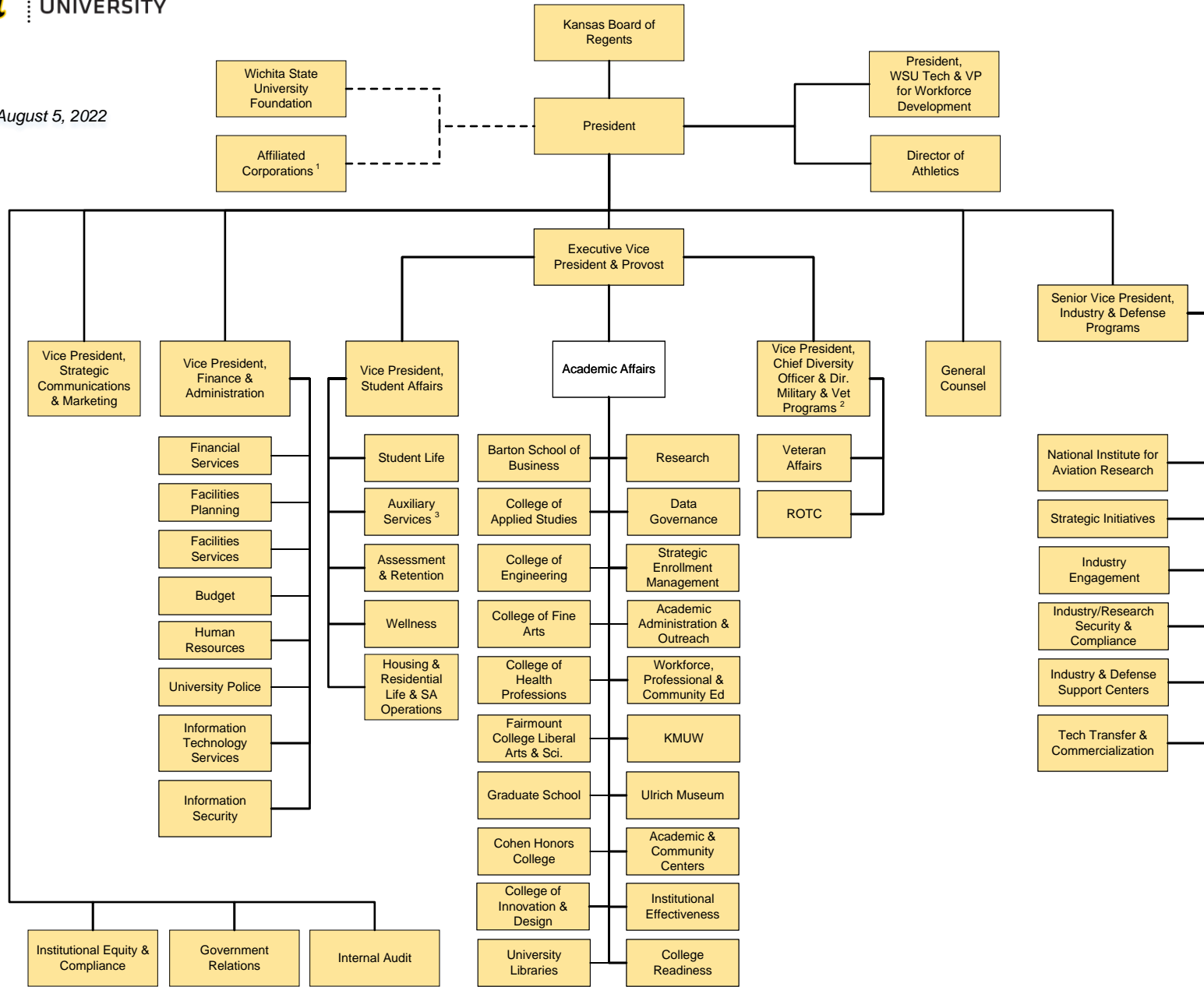


Revised August 5, 2022



1 = Affiliated Corporations, as defined in WSU Policy 1.06, includes: Wichita State Intercollegiate Athletic Association, Inc., Wichita State Union Corporation, Wichita State University Innovation Alliance, WSIA Investments Corporation.
 2 = Vice President Chief Diversity Officer also reports to the President regarding university diversity efforts.
 3 = Auxiliary Services includes oversight of operations of Wichita State University Union Corporation.