

COLLEGE OF ENGINEERING

DEPARTMENT OF AEROSPACE ENGINEERING

B			Aerospace Engineering
	M	D	Aerospace Engineering <ul style="list-style-type: none"> •Aerodynamics and Fluid Mechanics •Structures and Solid Mechanics •Flight Dynamics and Control •Multi-Disciplinary Design, Analysis, and Optimization

DEPARTMENT OF BIOMEDICAL ENGINEERING

B			Biomedical Engineering
	M		Biomedical Engineering <ul style="list-style-type: none"> •Biomaterials & Tissue Engineering •Molecular & Cell Bioengineering •Biomechanics & Rehabilitation Engineering •Bio-Computational Modeling & Devices •Innovation & Translational Biomedical Engineering

DEPARTMENT OF ELECTRICAL ENGINEERING AND COMPUTER SCIENCE

B			Computer Engineering
B	M		Computer Science
	M		Computer Networking
B			Electrical Engineering
	M		Electrical and Computer Engineering <ul style="list-style-type: none"> •Communication and Signal Processing •Computing Systems •Control Systems and Robotics •Power and Energy Systems •Computer Networking
		D	Electrical Engineering and Computer Science <ul style="list-style-type: none"> •Algorithms and Software Systems •Communication and Signal Processing •Computer Networking •Computer Systems and Architecture •Control Systems •Energy and Power Systems

DEPARTMENT OF ENGINEERING TECHNOLOGY

B			Engineering Technology <ul style="list-style-type: none"> •Civil Engineering Technology •Cybersecurity •Engineering Tech Management •Mechatronics Technology
---	--	--	--

DEPARTMENT OF INDUSTRIAL, SYSTEMS, AND MANUFACTURING ENGINEERING

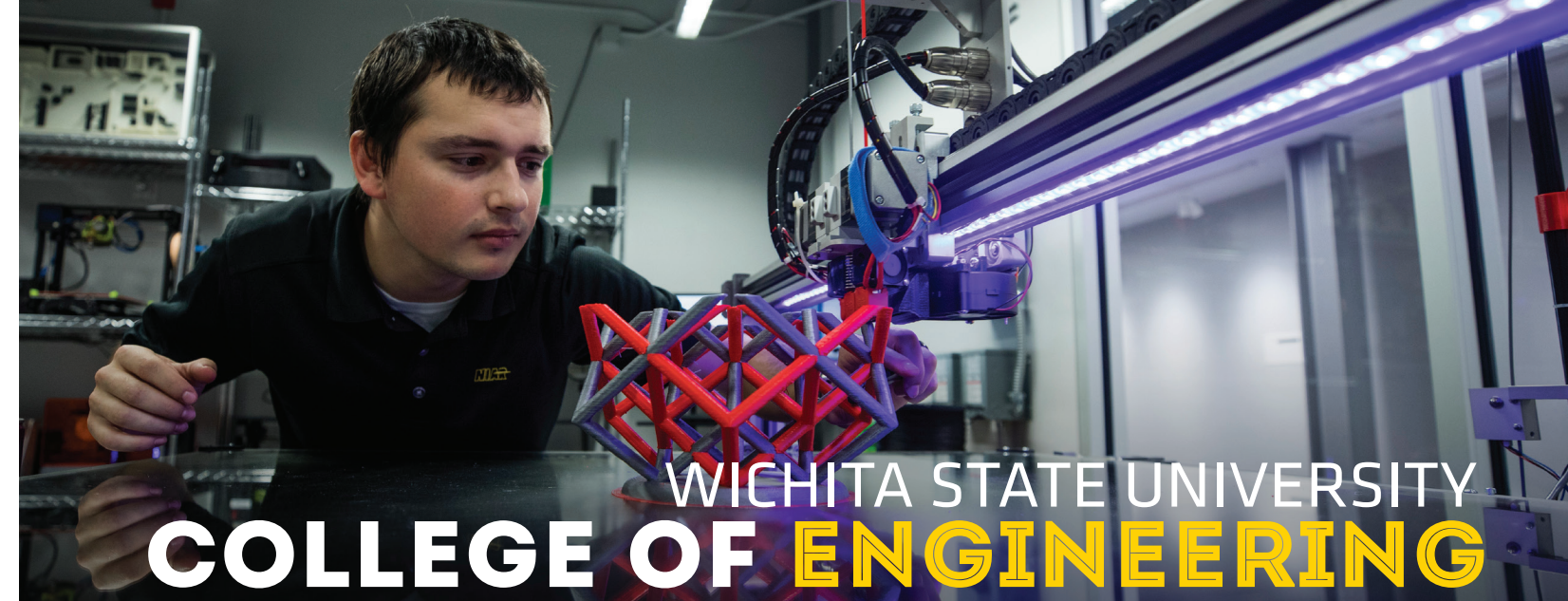
	M		Global Supply Chain Management
B			Industrial Engineering
	M	D	Industrial Engineering <ul style="list-style-type: none"> •Human Systems Engineering •Manufacturing •Operations Research •Production & Supply Chain Analytics •Quality and Reliability •Systems
B			Product Design & Manufacturing Engineering

DEPARTMENT OF MECHANICAL ENGINEERING

B			Mechanical Engineering
	M	D	Mechanical Engineering <ul style="list-style-type: none"> •Materials Science and Engineering •Mechanical Systems and Robotics/Control •Thermal/Fluid Engineering



WICHITA STATE UNIVERSITY



WICHITA STATE UNIVERSITY
COLLEGE OF ENGINEERING



ENGINEERING MAJORS & SPECIALIZATIONS

B = BACHELOR'S
M = MASTER'S
D = DOCTORATE

WSU RANKED **#1**

WSU is **RANKED 1ST** nationally in industry-funded **AEROSPACE RESEARCH AND DEVELOPMENT** by the National Science Foundation.

WSU has the **LARGEST ENGINEERING CO-OP AND INTERNSHIP PROGRAM** in Kansas.

3rd

Wichita is the **3RD LARGEST ENGINEERING HUB** in the U.S.



AIRBUS' partnership with Wichita State puts hundreds of world-class engineers and about **100 PAID ENGINEERING INTERNSHIPS** on campus.



ALMOST 25% of engineers in the Wichita metro area are **WSU GRADUATES.**

TOP 100

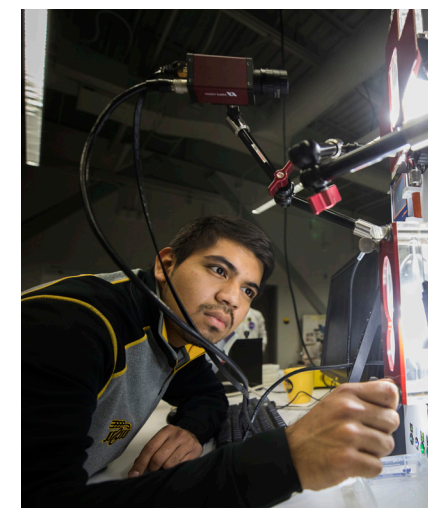
WSU is a **TOP 100** Engineering School with **ABET** accreditation.



The **ENGINEER OF 2020** program gives undergraduate students the chance to learn and **APPLY ENGINEERING PRINCIPLES** through research, internships, and study abroad opportunities.

CONTACT US

INTERNATIONAL EDUCATION
 1845 Fairmount Street
 Wichita, Kansas, 67260-0122 USA
 EMAIL: international@wichita.edu
wichita.edu/Engineering



WICHITA STATE UNIVERSITY

200 Engineering Cooperative Education placements EACH YEAR paying an average of **\$15 PER HOUR.**

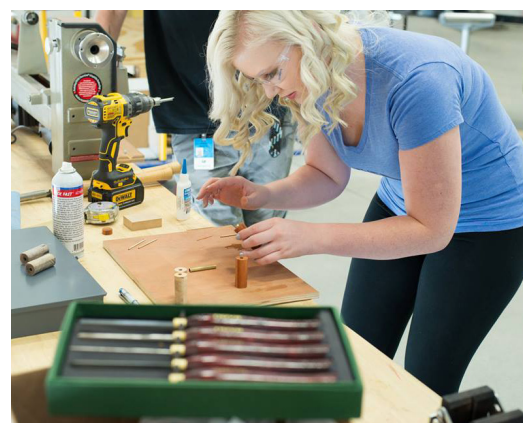
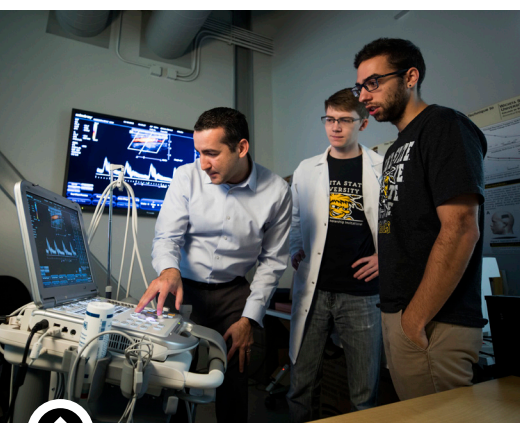


Nearly 900 INTERNATIONAL STUDENTS are majoring in engineering at WSU.

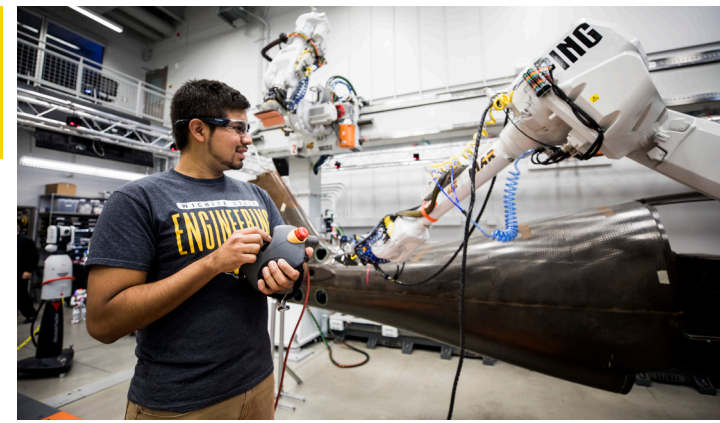
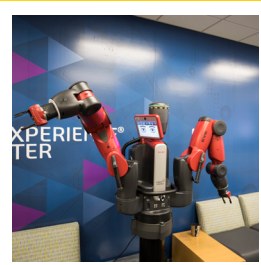
ENGINEERING LABORATORIES AND CENTERS



With nearly 100 research laboratories spread across 6 engineering buildings on campus, you can be assured you will receive a world-class engineering degree from WSU.



WSU engineering students have received **PRESTIGIOUS INTERNSHIPS** at NASA, NetApp, Spirit AeroSystems, Toyota, and GE.



FREE TUTORING in math, science, and basic engineering classes is available for all engineering students.



40% of all manufacturing **JOBS** in Kansas are within 80km of WSU.

- Acoustic Measurements & Materials Characterization Lab
- Additive Manufacturing Lab
- Advanced Coatings Lab
- Advanced Joining Processes and Assembly Laboratory
- Advanced Manufacturing Process Laboratory
- Advanced Networking Research Center
- Aerospace Structures Lab
- Aging Aircraft Lab
- Aircraft Icing Lab
- Astronautics Lab
- Ballistic and Impact Dynamics Research Lab
- Biodevices, Imaging, and Modeling Lab
- Biodynamics Laboratory
- Biomaterials and Bioengineering Laboratory
- Biomaterials Research Lab
- Biomedical and Biosensor Development Lab
- Biomedical sensors, Imaging, & Modeling Eng (BioME) Lab
- Biomedical Undergraduate Innovation Lab Design (BUILD)
- Boundary Layer and Water Table Lab
- CAD/CAM Lab
- CAD/Systems Laboratory
- Center for Energy Studies
- Center of Excellence for Composites & Adv Materials
- Center of Innovation for Biomaterials in Orthopaedic Res
- Cessna Manufacturing Laboratory
- Composites & Advanced Materials Lab
- Composites Manufacturing Laboratory
- Computational Fluid Dynamics Laboratory (CFD lab)
- Computational Hub
- Computational Mechanics Lab
- Computer Integrated Manufacturing Laboratory
- Controls Laboratory
- Crash Dynamics Laboratory
- Cybertron Collaborative Software Studio
- Cybertron Computer Studio
- Cybertron Gaming and Flight Simulation Hub
- Design Laboratory
- Electronics Hub
- Engine and Vibrations Laboratory
- Engineering Systems Laboratory
- Enterprise Engineering Lab
- Environmental Testing
- Ergonomics and Occupational Biomechanics Lab
- Flight Simulation Lab
- Flight Structures Lab
- Fuel and Fire Safety Lab
- Full-Scale Structural Testing Lab
- Health Systems Engineering Laboratory
- Human Biomechanics Design Lab
- Human Factors Lab
- Human Performance and Design Laboratory
- Laboratory for Sustainable Engineered Systems
- Laser Materials Processing and Nanotechnology Lab
- Low Speed Wind Tunnel (3x4)
- Manufacturing Process Laboratory
- Materials Science Laboratory
- Materials Testing Laboratory
- Mechanical Measurements Laboratory
- Mechanical Test Lab
- Mechanics and Dynamics Lab (MaDLab)
- Mechanics and Materials Lab
- Mechanobiology & Biomedine Lab
- Mechatronics Laboratory
- Metrology Lab
- Multidisciplinary Human Biomechanics & Design Lab
- Nanocomposites and Biocomposites Laboratory
- Nanotechnology Lab
- Nat'l Center for Adv Materials Perf (with NASA & USAF)
- Neuro-Robotics Lab (opening soon)
- Nondestructive Testing Lab
- Oil Analysis Lab
- Power and Engines Lab
- Project & Prototyping Lab
- Rapid Prototyping and Product Development Lab
- Ray and Dolores Waldo Aerospace Propulsion Lab
- Reliability and Maintenance Engineering Laboratory
- Reliability Engineering Automation Laboratory (REAL)
- Renewable Energy Lab
- Research Machine Shop
- Reverse Engineering Lab
- Robotics and Automation Lab
- Robotics and Controls Laboratory
- Shock and Vibration Laboratory
- Soft Matter Research Laboratory
- Supersonic Wind Tunnels
- Sustainable Energy Science & Engineering Lab (SESEL)
- Thermal and Fluids Engineering Lab
- Thermal Spray Coating Systems Laboratory
- Vehicle Design Lab
- Virtual Instrumentation Studio
- Virtual Reality Lab
- Walter H. Beech Wind Tunnel
- WATC Creative Design and Practice Laboratory
- Water Tunnel
- Wind Energy Lab