



UNIVERSITY STRATEGIC INITIATIVES

- Academic Affairs Priorities
- Innovation University

Rick Muma, PhD, MPH, Provost

Professor Public Health Sciences and Physician Assistant | 978-5761 |

richard.muma@wichita.edu

PRIORITIES 2018-2019

1

Advance a culture of shared governance built on trust and integrity.

2

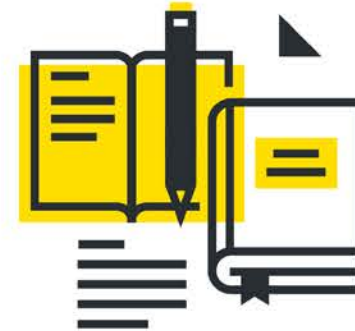
Support Strategic Enrollment initiatives that lead to a foundation of success for our students.

4

Evaluate new reward structures for faculty in teaching, research and service in light of the changing higher education landscape.

3

Innovate academic offerings for students seeking new degree options or alternative credentials.





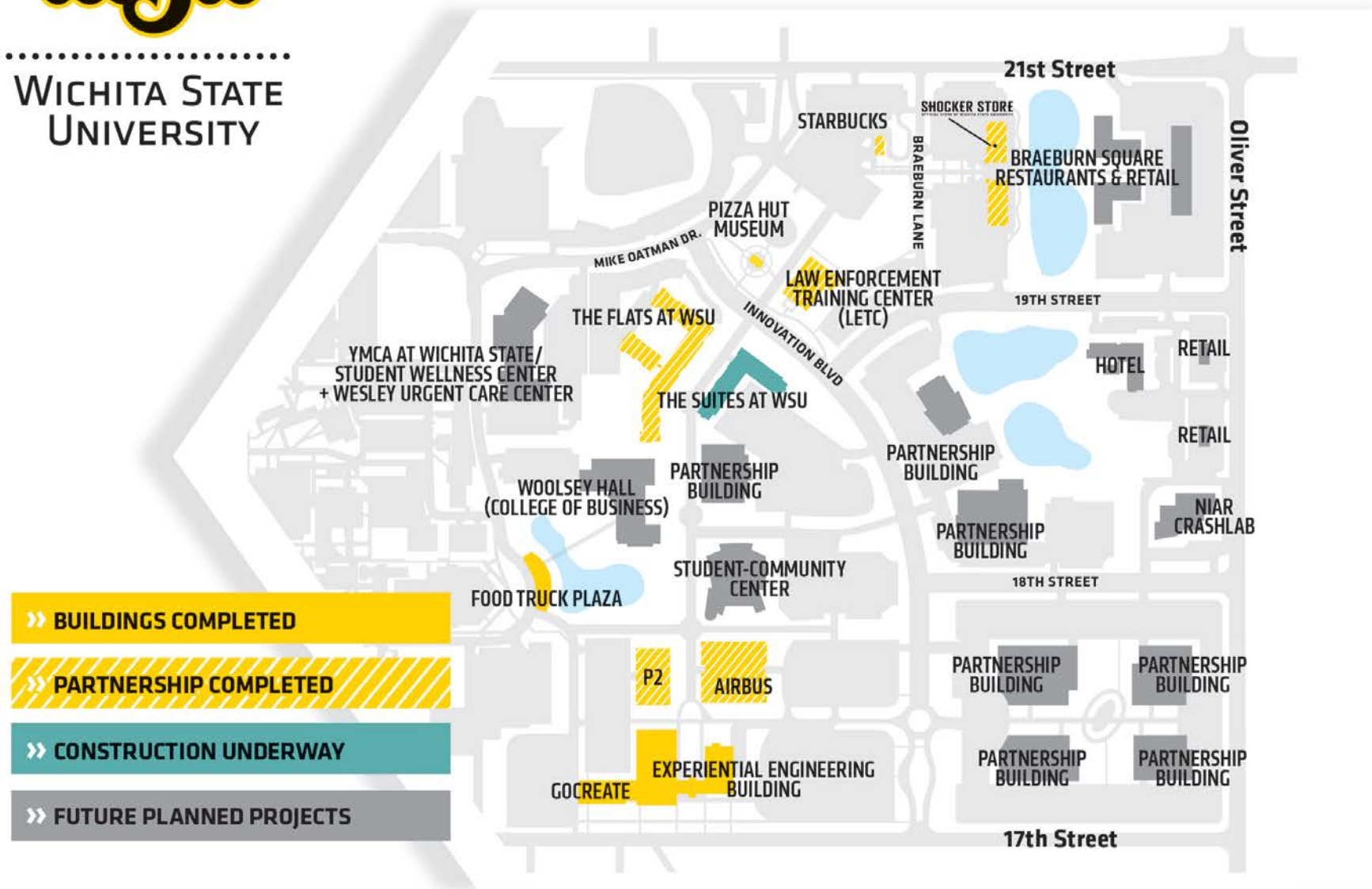
INNOVATION UNIVERSITY - VISION

- The Innovation University, and the strategic plan that spurred its development, values applied learning opportunities that deliver real-world work experiences while still in school.
- It values collaboration; creative opportunities and teamwork -- even among seemingly unrelated fields of study -- that solve problems and express new thoughts in unexpected ways.
- It values a vibrant and growing campus community, one where students live, learn, work and play in the heart of campus, making lifelong connections and being exposed to a diverse range of ideas and cultures every day they're at WSU.



.....
WICHITA STATE
UNIVERSITY

FALL 2018 UPDATE: CAMPUS EXPANSION





» P2



» AIRBUS



» EXPERIENTIAL ENGINEERING
BUILDING & GoCREATE



» LAW ENFORCEMENT
TRAINING CENTER



» WICHITA.EDU/INNOVATIONCAMPUS



“ ENVISION BEING PART OF A UNIVERSITY WHERE **INNOVATION**, **CREATIVITY**,
ENTREPRENEURSHIP AND **TECHNOLOGY** ARE MAKING THE FUTURE. ”

» JOHN BARDO, PRESIDENT, WICHITA STATE UNIVERSITY

PARTNERSHIP 2 (P2)

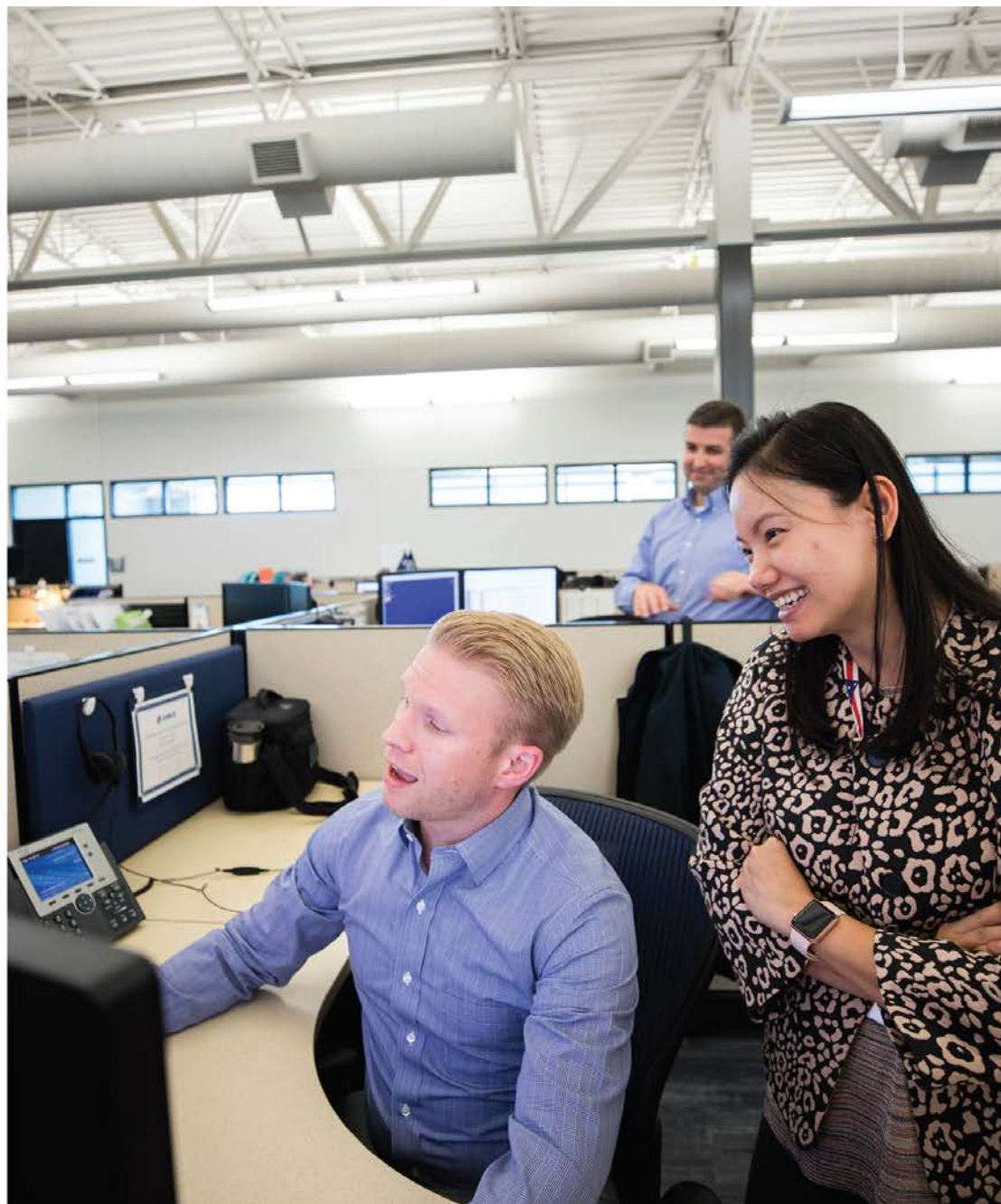
- Spirit Aerosystems
- FirePoint Innovations
- College of Engineering Administration
- Engineering Student Success





AIRBUS AMERICAS ENGINEERING

- Opened in 2017 as first partnership building
- Engages in aerostructures design and analysis of aircraft primary structure for all major Airbus products
- Provides opportunities for applied learning





EXPERIENTIAL ENGINEERING BUILDING



- Opened in 2017; home to College of Engineering student labs, National Institute for Aviation Research industry labs and GoCreate community makerspace
- Provides an environment for hands-on learning, creativity and entrepreneurship
- Building tenants: Dassault Systemes 3D Experience Center, Hexagon Manufacturing Intelligence, Youth Entrepreneurs





LAW ENFORCEMENT

TRAINING CENTER (LETC)

- Opened in 2018; features training space and classrooms for area law enforcement and WSU's School of Criminal Justice
- Increases recruits for the criminal justice program and for law enforcement hiring





BRAEBURN SQUARE

- A development underway at 21st and Oliver with dining, retail and lodging
- Freestanding Starbucks coffee shop opened in 2017
- Shocker Store opened fall 2018

