

Women of Wichita State

COMMUNITY | SUPPORT | SCHOLARSHIP



A NOTE FROM THE PRESIDENT

Angela Paul

Many thanks to each of you for your membership! In addition to the funds which are used for scholarships, our general budget also supplies money for scholarships, so your dues also support scholarships for WSU students.

Thanks for your financial contributions!

On September 9, 2021, we held a Meet & Greet for the WSU community. This provided an opportunity for new and existing members and interested people to gather and learn more about WWSU. The event featured a slideshow that showcased the scholarship recipients for 2021/22. 5 well-deserving students each won \$1000 for tuition.

It was so nice to get together in person for a change. The food was wonderful, and students from the Office of Diversity and Inclusion were happy to help us with the leftovers. We hope you enjoyed yourselves at our first event for the year.

We also had a gathering at Social Tap on September 30. It hasn't happened yet, as I write this, but the Board approved a budget to provide food, so I hope we had a crowd! I'm looking forward to it. Social Tap is a fun place, has a great beer selection, and also has a large outdoor patio overlooking the lake.

Please encourage membership to new employees or membership to spouses. Our activities and interest groups are a great way to feel connected to Wichita State. WWSU membership is available to all female-identifying employees (including auxiliary entities) spouses. Just as Student Involvement helps students feel connected and stay enrolled, we hope WWSU helps faculty and staff feel connected.

WWW.WICHITA.EDU/WWSU

continued on next page



2021-22 | ISSUE 1

Interest Groups

Book Club

Friends & Food

Games & Giggles

Lunch Bunch

New Members

Theater

***NEW* Outdoor
Activities**

**LEARN
MORE**

A NOTE FROM THE PRESIDENT

Angela Paul

There are a variety of interest groups, so get some bonding time over a shared hobby! Friends & Food, Theatre, and Games & Giggles groups are great for couples. Lunch Bunch will let you get away from work for a while and meet women from other departments.

The Book Club is our biggest group with nearly 30 members. A new group will be starting soon for those of us who like outdoor activities! Do you have an idea for another interest group? Please contact Twyla Hill, Interest Group Chair.

Would you like to get more involved in WWSU? We would love your participation in the Scholarship Committee. Right now there is only one person, and several people should be involved in making decisions about scholarship winners. Please contact Anne Marie Brown if you are interested in joining her committee.

Are you missing the WWSU annual luncheon at the president's home? Although we are not co-sponsoring this event, most of the WWSU Board is helping at or attending the Historic Tea on October 26 and 27, which is part of Inauguration Week. Please join us for this elegant event.

Thanks again for your membership! Feel free to pass this newsletter on to potential members and let me know if you have questions.

Social Hour at the Social Tap!



INSPIRED BY THE PAST. FOCUSED ON THE FUTURE.

JOIN US *Historic Tea*

OCTOBER 26 & 27, 2021
AT 11:30 AM OR 2:00 PM

WICHITA STATE UNIVERSITY
PRESIDENT'S RESIDENCE

Enjoy a "Historic Tea" served on the presidential fine china. Tour the residence. View interesting items and displays, and learn about the history of the President's home and the presidential spouses who have lived there. [Learn more!](#)

INTEREST Groups

THEATER GROUP

Twyla Hill

The Theatre Group has not been active due to the pandemic. Now there are more shows happening again, and this group needs a new leader to help organize outings. In the past, we often went to the shows on campus, but there are lots of other shows in Wichita too. Let me know if you are interested in leading this interest group. Also, let me know if you have ideas for another interest group, or for activities for the New Members group. Reach out at twyla.hill@wichita.edu.

NEW GROUP

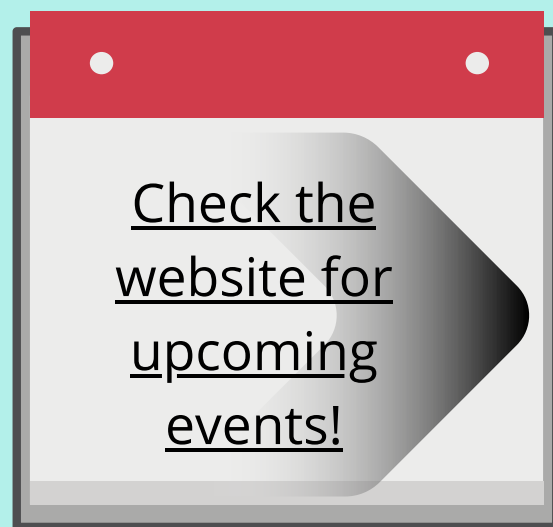
Julie Sanders has volunteered to lead this group, which is tentatively scheduled to meet on the first Tuesday of the month. The activities will be local, such as walking the campus to enjoy the sculptures and beautiful landscaping while getting some exercise, or the paths at the Great Plains Nature Center to check out the plants and wildlife. Members will determine how strenuous the activities will be, and we will try a variety of activities. Contact Julie at Julie.sanders@wichita.edu for more information.

Want to be more involved with WWSU?

Help the Scholarship Committee achieve the purpose of WWSU, providing student scholarships!

A committee of three to four people is needed to select our scholarship recipients, in June 2022. Review of applications will begin in May and then recommendations made to the board in June.

Please contact Anne Marie Brown, annemarie.brown@wichita.edu, if you are interested in joining the scholarship committee.



LUNCH & LEARN

Join us virtually on **October 29 from 11:30pm - 12:15pm** for a conversation with WSU Sociology Instructor, Jodie Simon, about "*The Feminist, the Witch, and the Patriarchy*". Check your email for the invitation. For more information, please contact Angela Paul at angela.paul@wichita.edu.

MEET & GREET

On September 9th, new and existing WWSU members joined with non-members over food, stories, and laughter. The purpose was to show eligible female identifying people the purpose and goals that WWSU holds dear. We also showed that we like to have fun! A slide show ran with information about WWSU and featured our 2021/22 scholarship recipients. It was a blast!



SCHOLARSHIPS

2021-2022

Caroline



Major: ECU/Elementary Education Apprentice.

Graduation: Summer of 2023.

The WWSU Scholarship will help me to reach my goal of becoming a teacher as I work full time as a Teacher Assistant and am living on a tight budget.

Thank you so much for your generosity!

Emily



- **Major:** Biomedical Engineering
- **Minor:** Chemistry
- **Graduation:** Spring 2023

The WWSU scholarship helps me progress in my educational goal of ultimately receiving a master's degree in biomedical engineering from WSU by allowing me to continue to fund my education.

After completing my degree, I desire to work with robotic prosthetics to improve amputees' quality of life through increased mobility and pain reduction.

Jessica



- **Major:** Social Work with a certificate in Substance abuse awareness
- **Graduation:** spring of 2022

This scholarship is helping me finish my degree and purchase materials I need for classes and practicum.

I am so appreciative for this award. Thank you so much.

[Learn more](#)
[about WWSU](#)
[scholarships](#)

SCHOLARSHIPS

2021-2022

Kassidy



- **Major:** Early Childhood Unified + Elementary Education
- **Graduation:** Spring 2022

This scholarship will strengthen my ability to finish my last year at WSU. This scholarship can help me further my professional training and certification goals, and in turn will help me start a career in Elementary Education and eventually become a successful professional in the education field.

Thank you, WWSU, for this scholarship opportunity!

Samantha



- **Major:** psychology
- **Minor:** marketing & signed language
- **Graduation:** 2023

The WWSU scholarship aids me in becoming the first-generation college graduate in my family.

CONGRATULATIONS!