

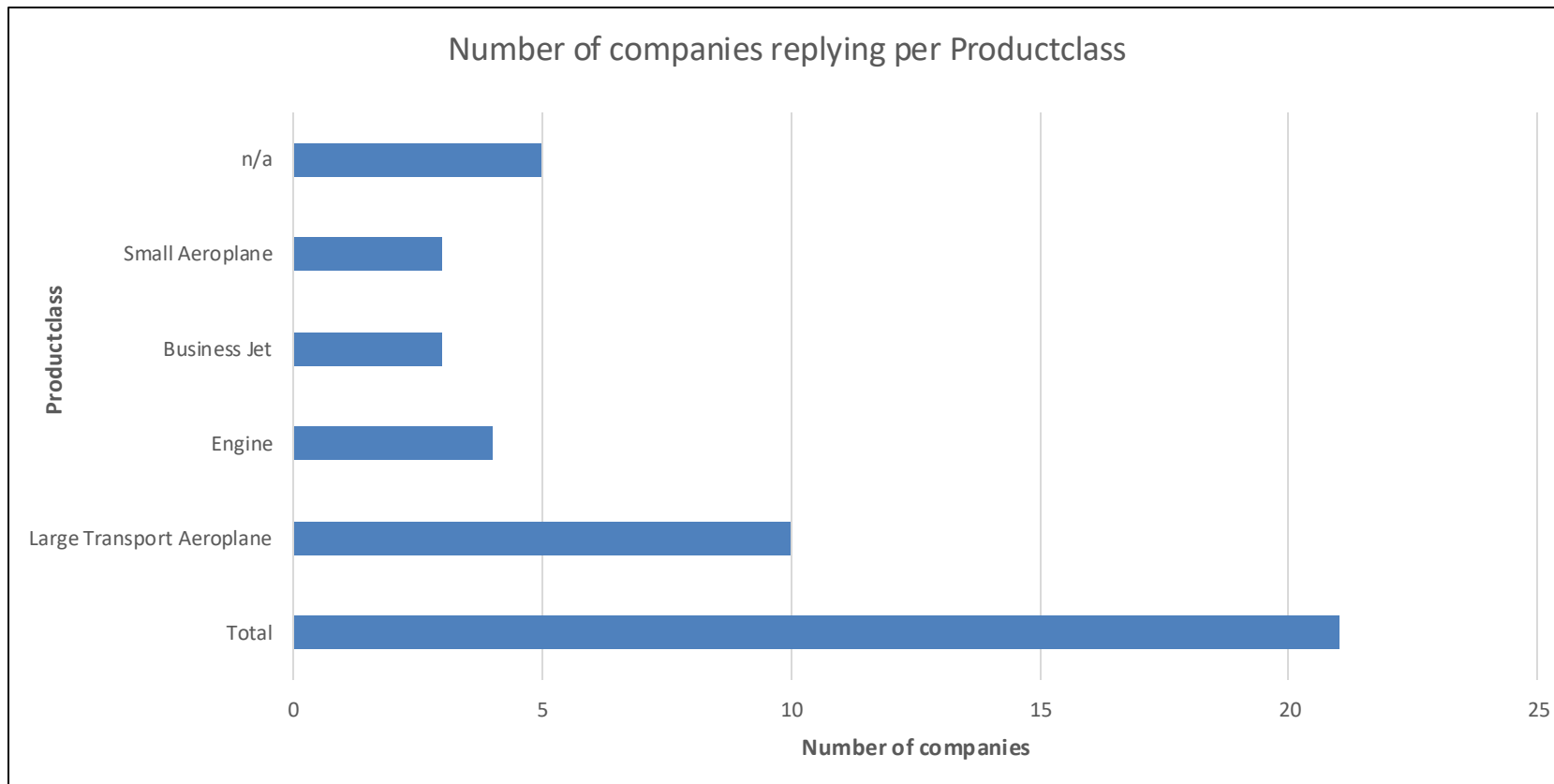
AM Part In-Service Initial Survey

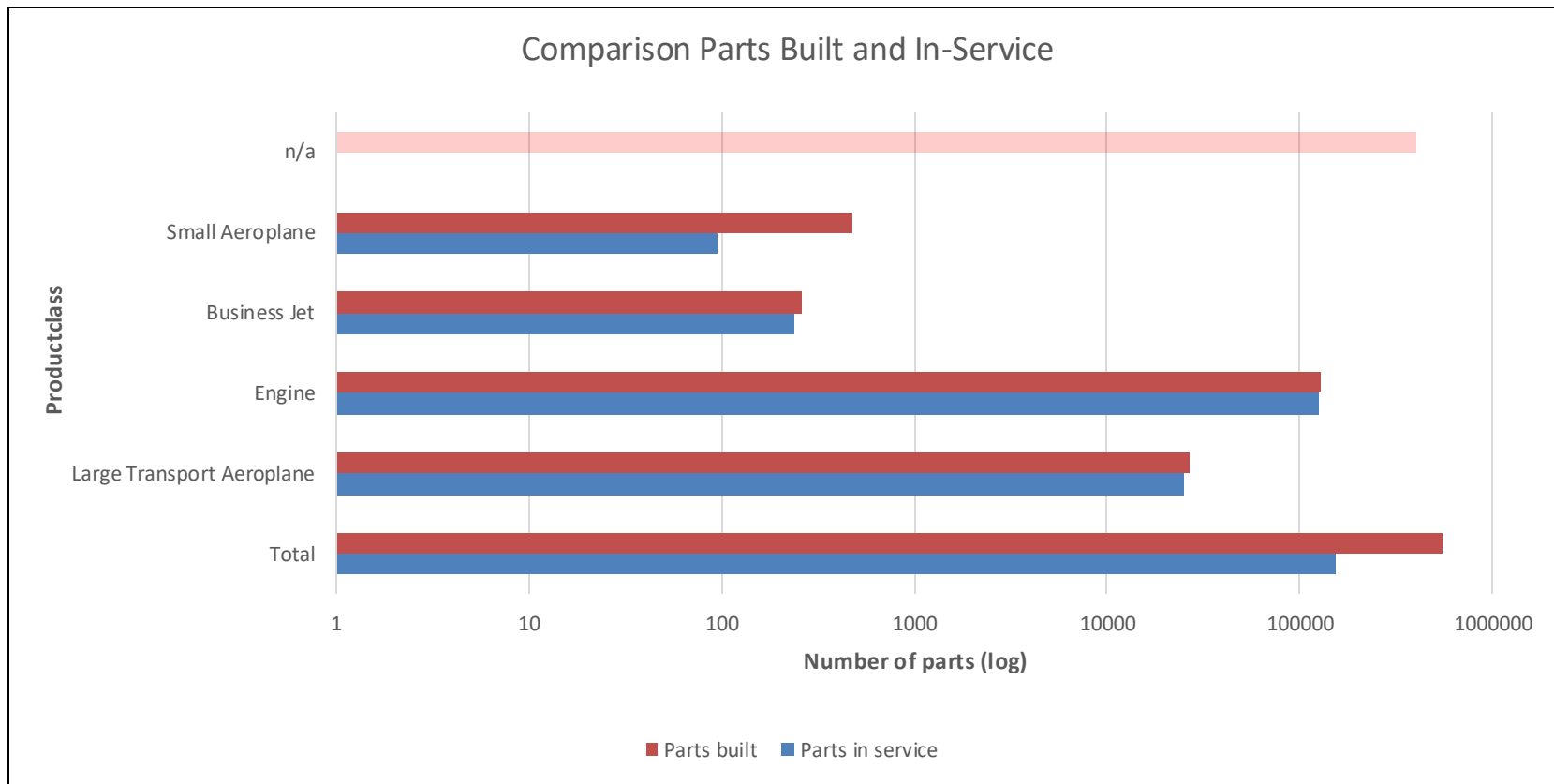
An Industry request from 2023 event

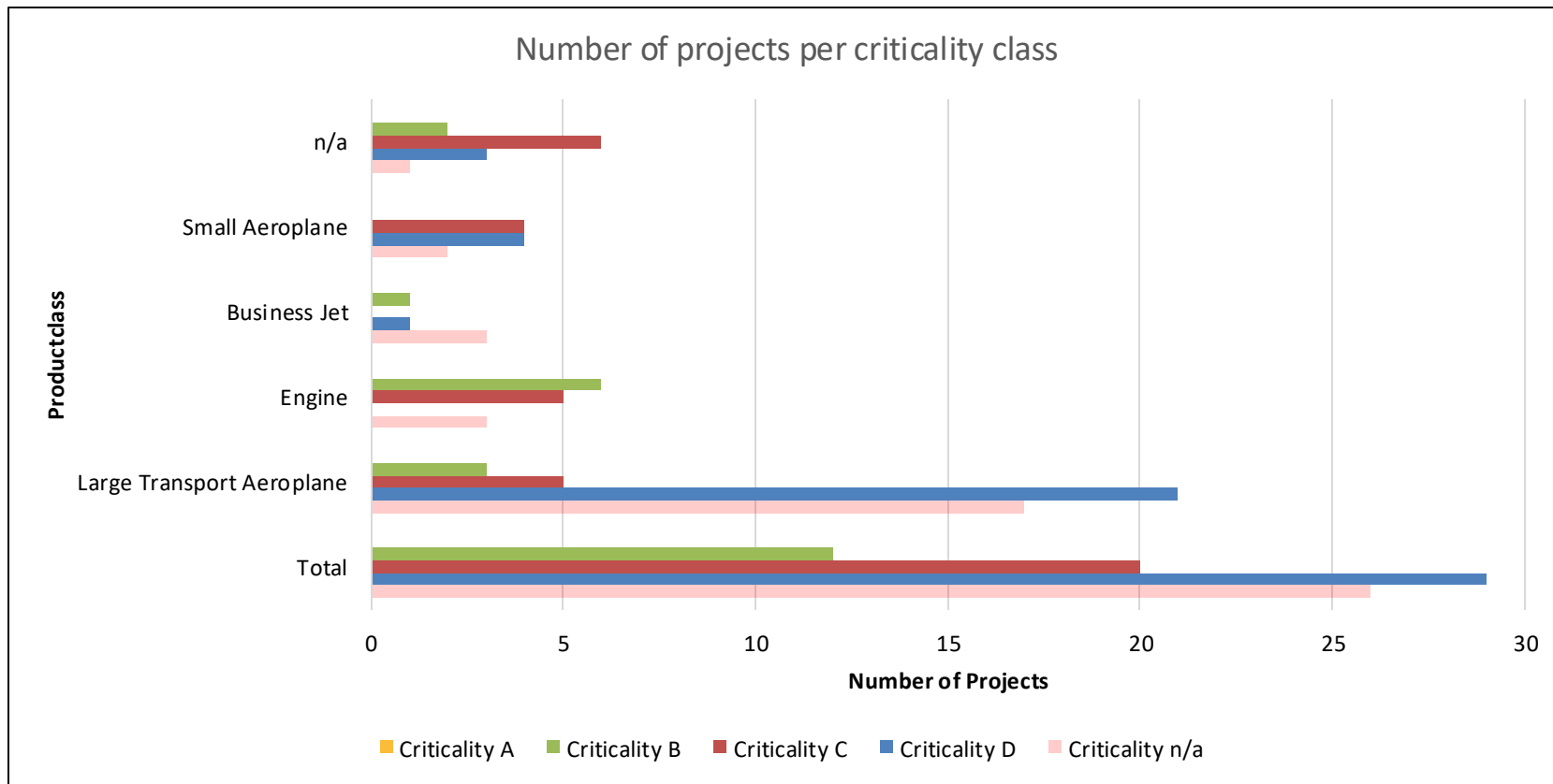


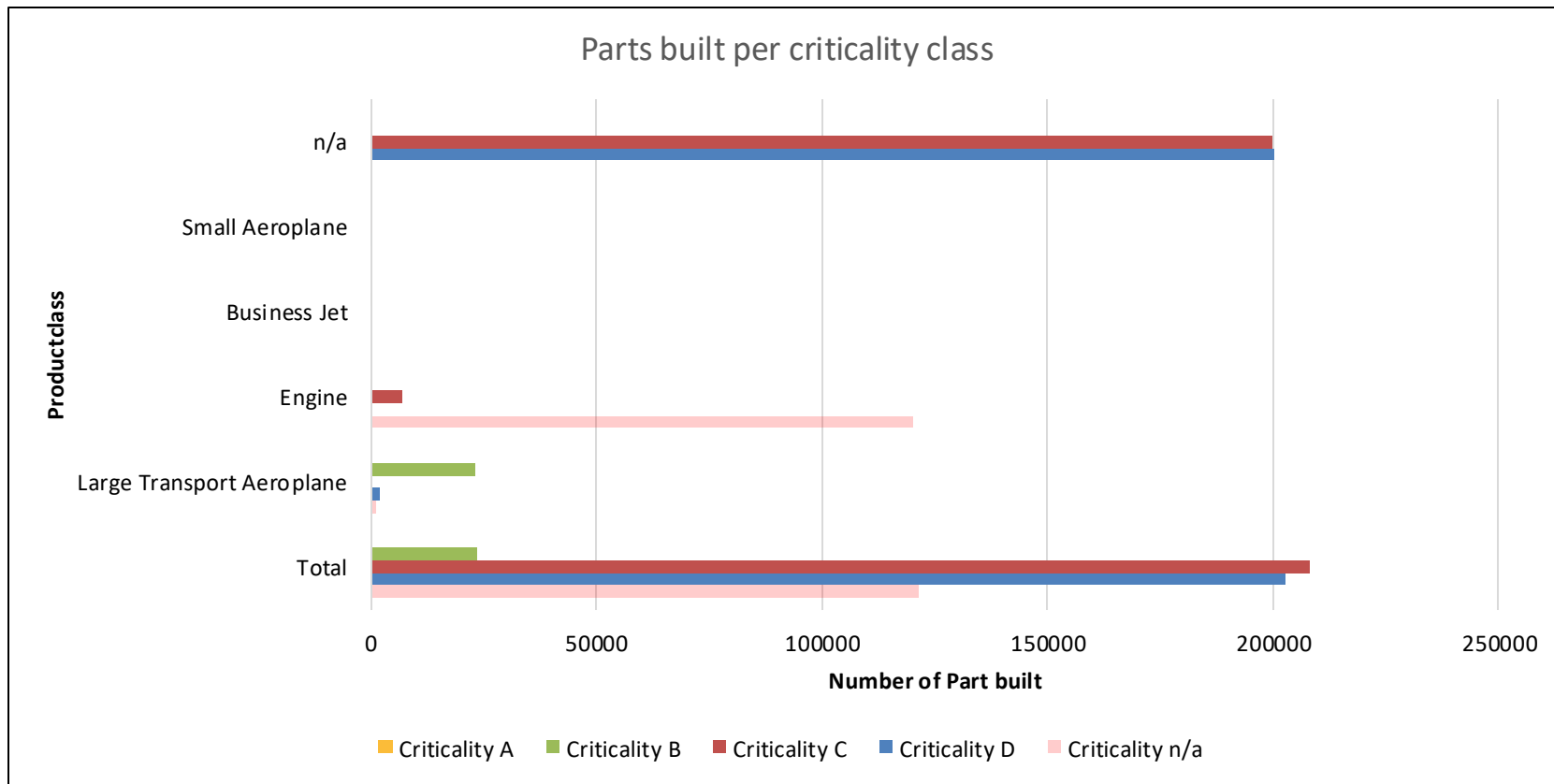
Information

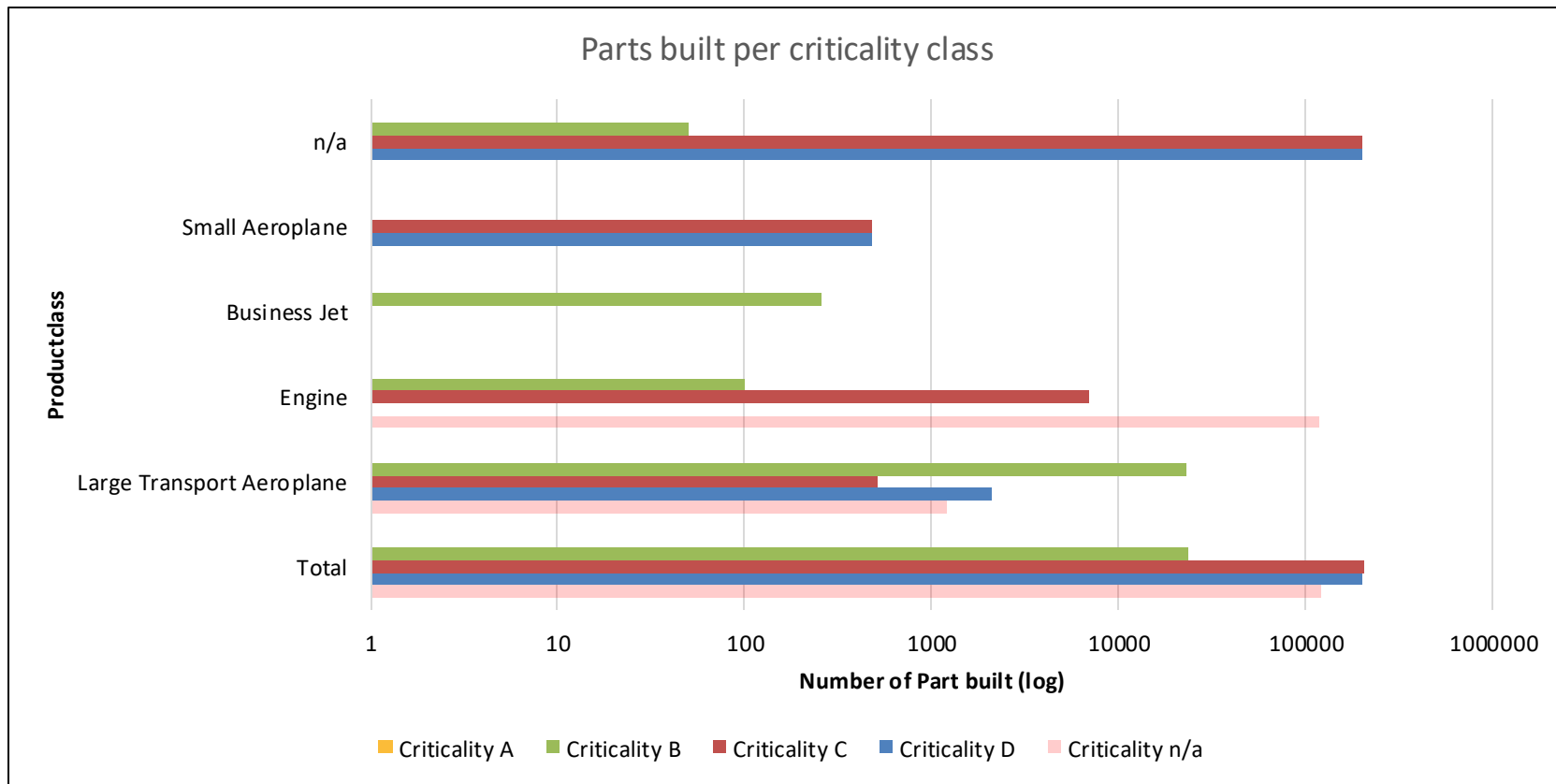
- All data is anonymous
- n/a - meaning
 - No data available, or
 - Available data not properly usable in the analysis
- Rotorcraft not individually identified
 - Included across the other product classes

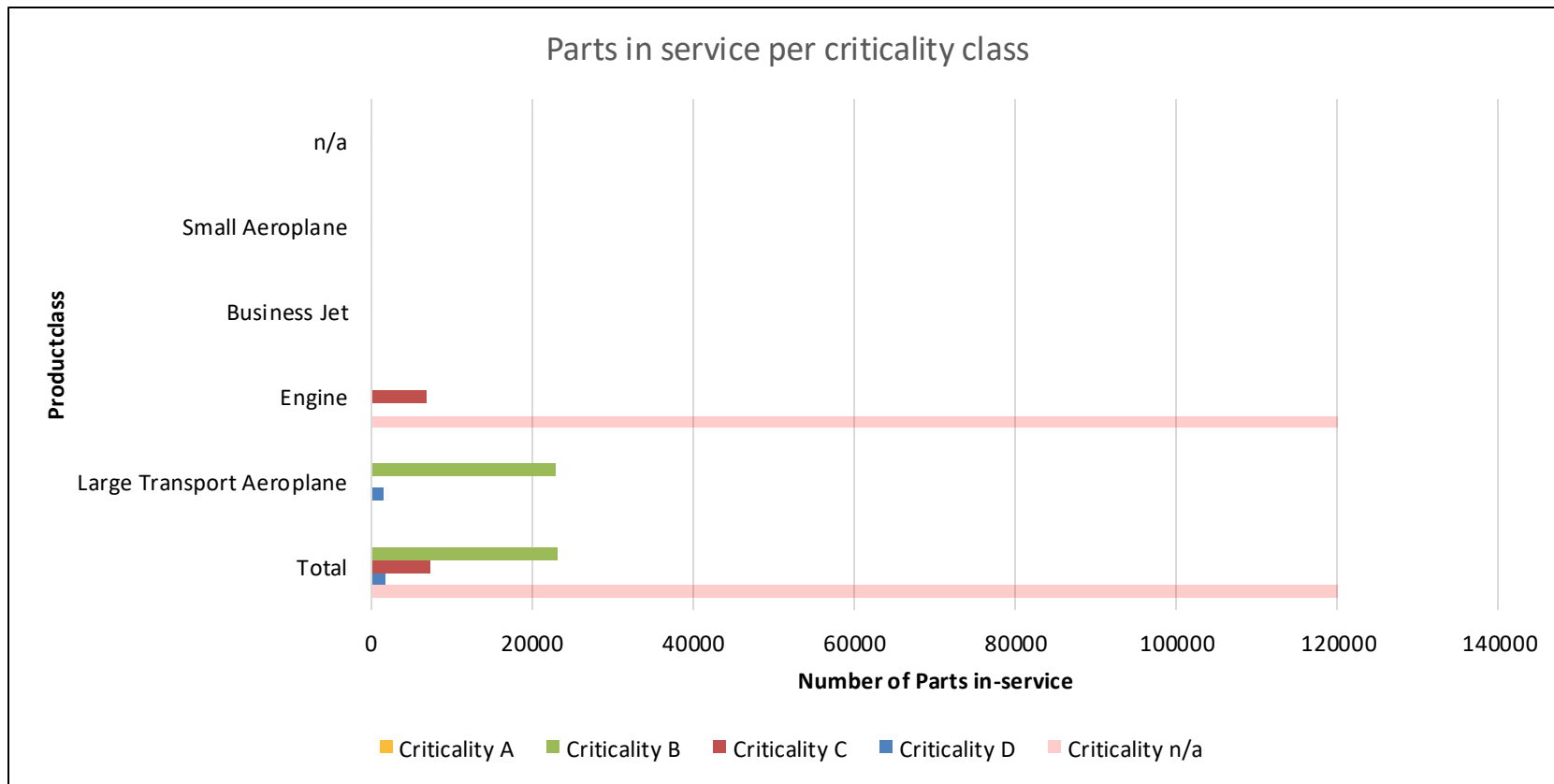


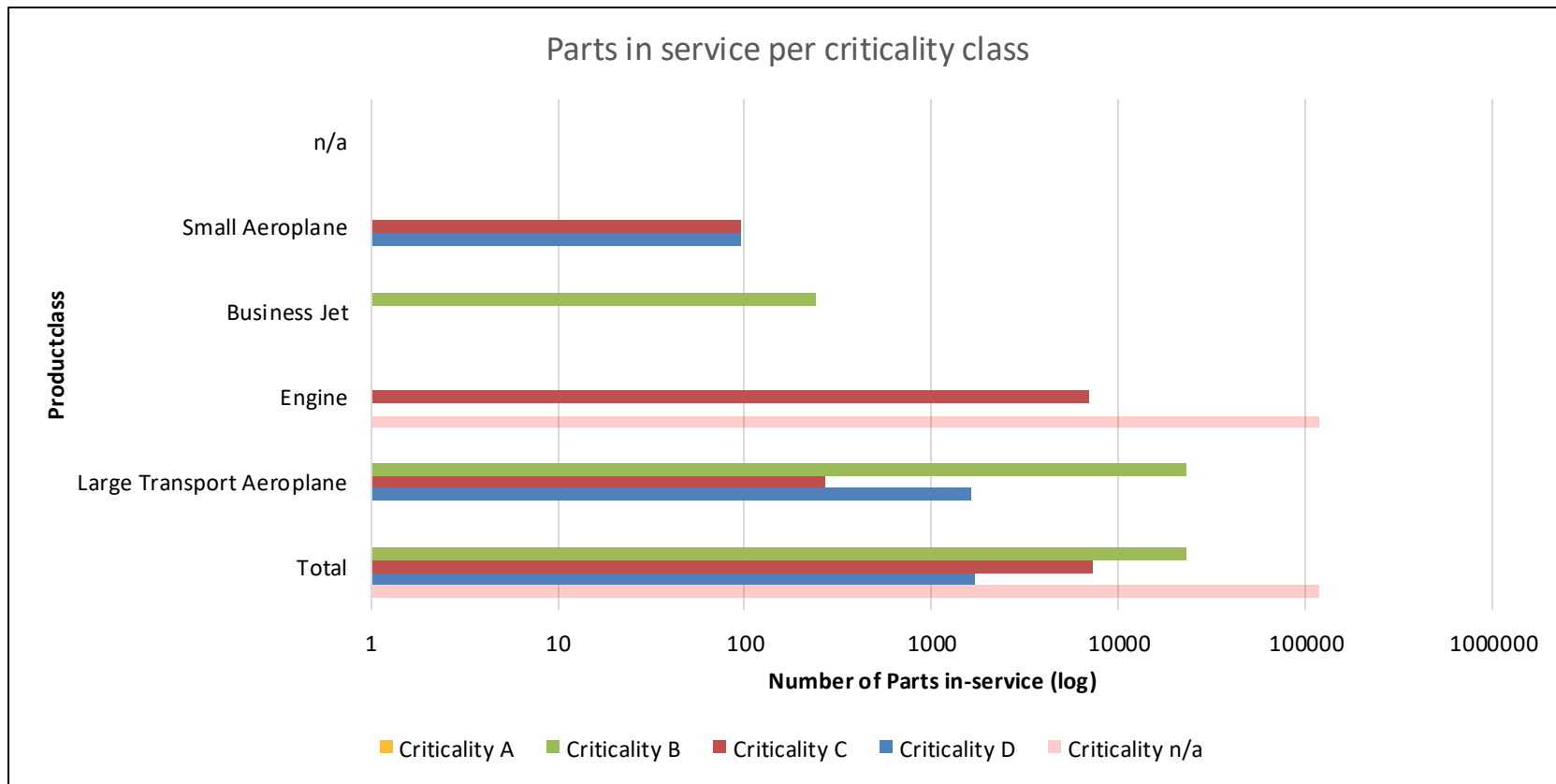












Summary

- Parts mostly C&D
- Some B-Items, mostly engine
- Some Information is lost between product classes (e.g. engine and Large Aeroplane)
- Distinguishing of Rotorcraft data necessary

Summary

→ Observation

- Significant system-structure development
 - benefit of reduced part count for system installations
 - Limited by M&P (e.g. system speed, build volume)

→ Data details depended on industry information

→ Questions?

→ Ideas for further development of this dataset?