

VOL. 5 ISSUE 1 | FALL 2024

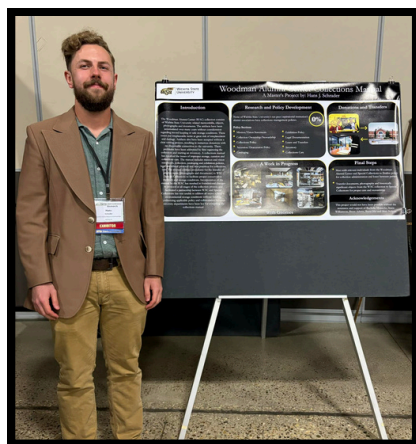
HOLMES HAPPENINGS

Official Newsletter of
Lowell D. Holmes Museum of Anthropology

STUDENTS ATTEND THE MOUNTAIN- PLAINS MUSEUMS ASSOCIATION CONFERENCE

Graduate student , Hans Schrader and and Senior, Lilith Samples received scholarships from MPMA to attend the annual conference in Bismarck, North Dakota, October 5-9.

Hans participated in the academic poster competition which featured his Masters project “ Woodman Alumni Center Collections Manual”. They both attended workshops, presentations and connected with other college students and museum professionals from the 10 state region.



Hans Schrader



Hans Schrader, Rachelle Meinecke
Lilith Samples

THIS ISSUE:

Students Attend
Conference
PAGE 1

Pizza Hut Museum
NEWS
PAGE 2

New Fall Exhibits
PAGE 3

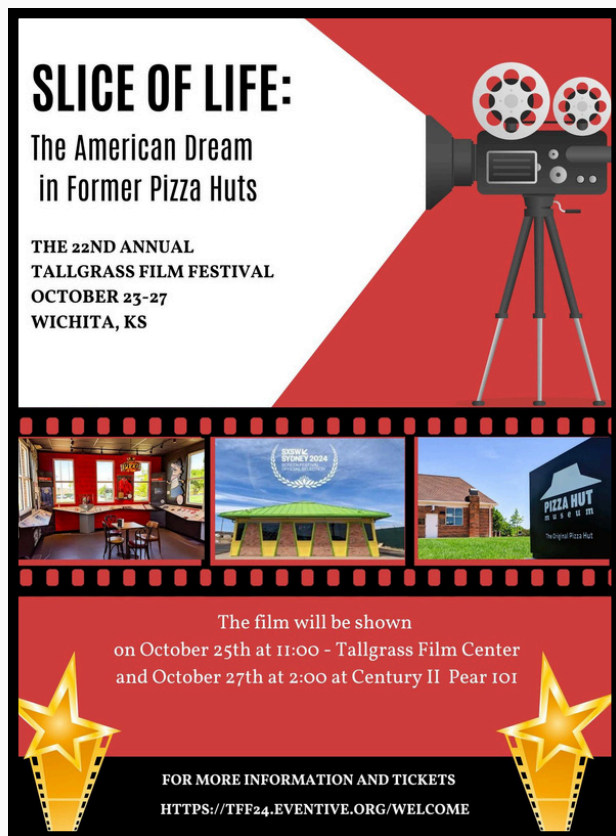
Meet the Staff
PAGE 4

Contact Information
PAGE 5



WICHITA STATE
UNIVERSITY
FAIRMOUNT COLLEGE OF
LIBERAL ARTS AND SCIENCES
Lowell D. Holmes Museum
of Anthropology

PIZZA HUT MUSEUM NEWS

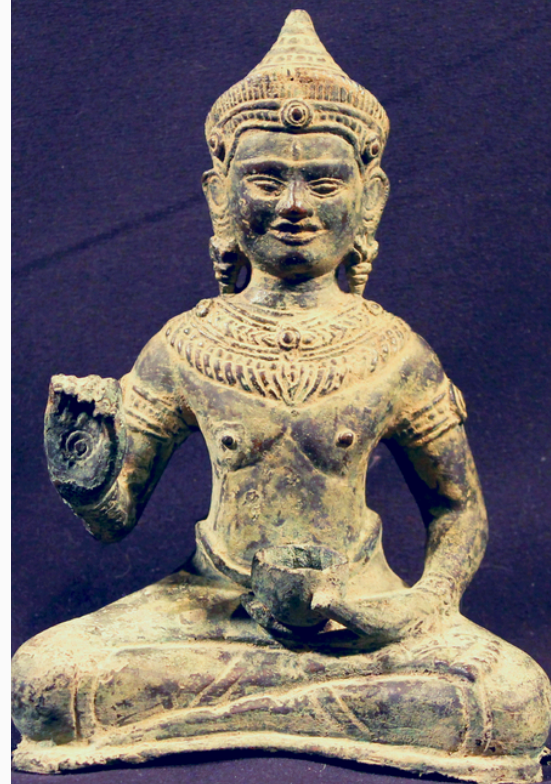


"IT'S NOT A
MUSEUM.
IT'S NOT A
PLACE OF
ARTIFACTS;
IT'S A PLACE
OF IDEAS."

JEANIE KAHNKE

This film is a contemporary portrait of America, told through a collection of stories observed within the walls of former Pizza Hut buildings across the country. These nostalgic spaces hold memories of a bygone era, but through the power of transformation, they provide something new and special for the communities that continue to flow through them. From an LGBTQ+ church in Florida, to a karaoke bar in Texas, to a cannabis dispensary in rural Colorado, these modern-day portraits are paralleled with the origin story of Pizza Hut - one of America's most iconic brands, and the two brothers who founded the company in Wichita, Kansas in 1958.

Rose Tucker and Matt Selah were in Wichita in the summer of 2023 to learn about the start of Pizza Hut, visit the museum and Pizza Hut collection in Special Collections and conduct some interviews. Be sure to check out this film at the Tallgrass Film Festival!



"A PEOPLE
WITHOUT
KNOWLEDGE OF
THEIR PAST
HISTORY, ORIGIN
AND CULTURE ARE
LIKE A TREE
WITHOUT ROOTS"

MARCUS GARVEY

FALL EXHIBITS



Senior, Lilith Samples created a new exhibit entitled "Festival Threads: Ensembles from Central America." The exhibit features bright and colorful festival type clothing from the Jerry Martin collection.

Seniors, Kali Moon and Timmerie Henke created two new exhibits in the RSC. Kali's exhibit (left) is entitled "Tea of Eastern Asia" and tells the rich history of tea ceremonies that cultivate harmony between nature and humanity. Timmerie's exhibit is entitled "Fractured Yet Whole" and tells the story of broken objects and their transformation within the museum's care.





MEET THE STAFF

Rachelle Meinecke - Director

Rachelle is the coordinator of the Museum Studies Certificate and teaches museum studies Classes. She is also the curator of the Pizza Hut Museum.



Hans Schrader- Registrar & GA

Hans is a graduate student in Anthropology. He recently completed his Museum Studies Certificate and would like to pursue a career in museums.

Studying the diversity of human experiences is what drew him to anthropology. "The many similarities and differences in traditions, art and social structure across cultures fascinate me and I simply enjoy learning about them"



Lilith Samples- Curator/social media

Lilith is a senior in Anthropology with an emphasis in history and geology. After graduating she plans on traveling and looking for field work and eventually work in a museum.

"I really enjoy learning about other cultures, their values, and the stories that are passed on to each generation. As well as finding and analyzing lost artifacts from people hundreds if not thousands of years ago, seeing what they enjoyed and how they lived"



Timmerie Henke - Curator

Tim is a senior in Anthropology and has an interest in osteology and odontology. She began studying anthropology after taking an intro to archaeology course with Dr. Dozier and fell in love with archaeology and history. She plans to pursue her Master's degree next fall.



Kali Moon - Curator

Kali is a senior in Anthropology with a focus in archaeology. She has always loved to travel and learn about other cultures and knew she wanted to go into archaeology from a young age. She plans to pursue her Master's degree next fall.





MUSEUM AND EDITORIAL TEAM

MUSEUM DIRECTOR

Rachelle Meinecke

MUSEUM REGISTRAR

Hans Schrader

CURATOR AND SOCIAL MEDIA

Lilith Samples

CURATORS

Timmerie Henke and Kali Moon

CONTACT INFORMATION

QUESTIONS? COMMENTS? CONCERNS?

holmes.museum@wichita.edu
316-978-7068

Museum Studies Certificate Informaton
www.wichita.edu/holmesmuseum

1845 Fairmount St., Box 52
Wichita, KS 67260-0052

LOCATION

NEFF HALL

First floor, with exhibits throughout the building

HOURS

1 PM - 5 PM, MONDAY THROUGH FRIDAY

or by appointment

LOWELL D. HOLMES



MUSEUM OF ANTHROPOLOGY



HOLMES HAPPENINGS