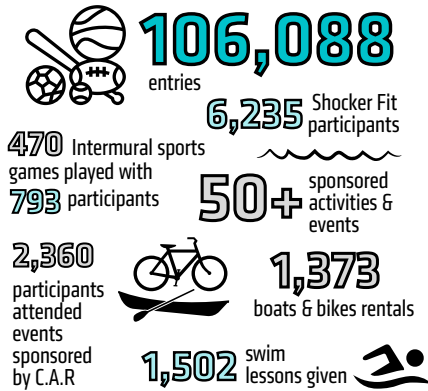


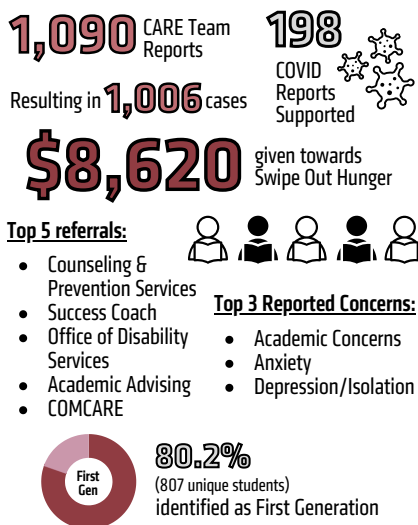
# STUDENT AFFAIRS

## BY THE NUMBERS

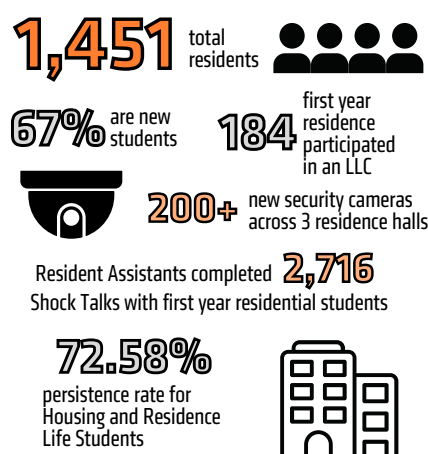
### CAMPUS ACTIVITIES & RECREATION



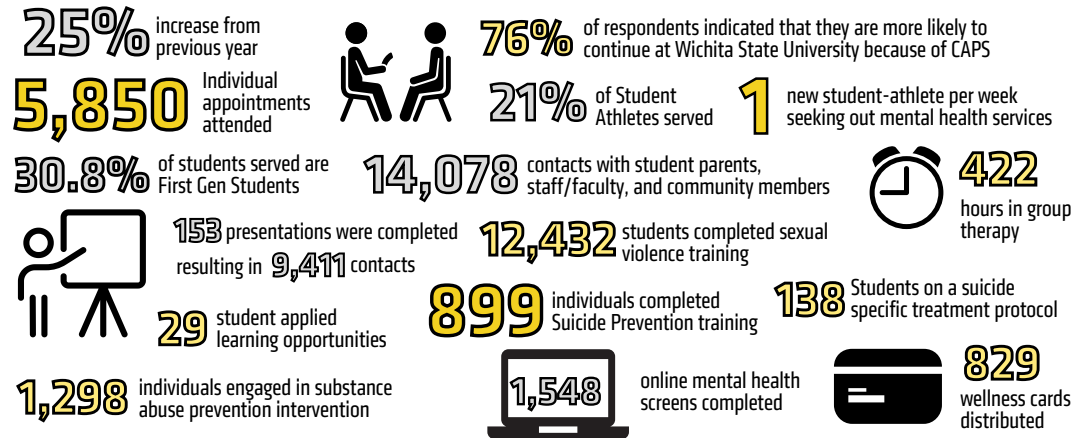
### CARE TEAM



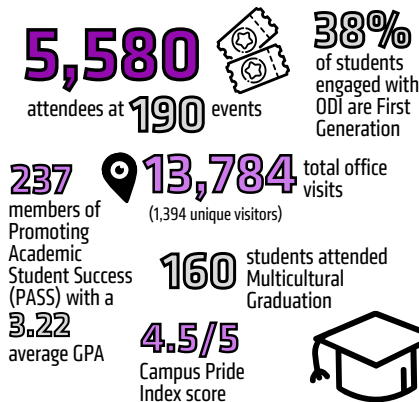
### HOUSING & RESIDENCE LIFE



### COUNSELING AND PREVENTION SERVICES



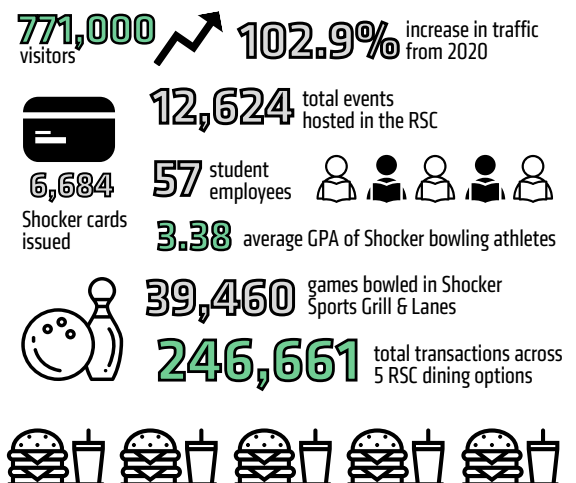
### OFFICE OF DIVERSITY & INCLUSION



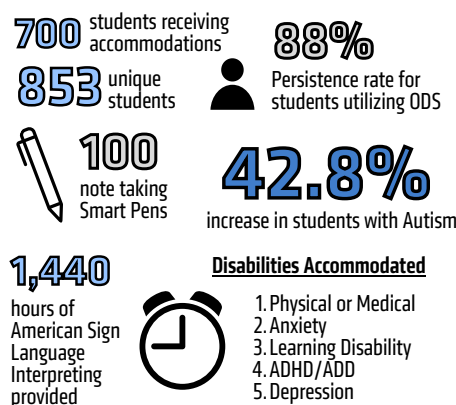
### CHILD DEVELOPMENT CENTER



### RHATIGAN STUDENT CENTER



### OFFICE OF DISABILITY SERVICES



### Access Now Pilot Program



## STUDENT CONDUCT &

### COMMUNITY STANDARDS

 **388** Academic Integrity Cases  
**780** Conduct Cases **1,127** total cases

#### Top 5 Charges:

1. Academic Integrity
2. Alcohol, Drugs, & Other Substances – Underage
3. Cooking and Appliances: Cooking
4. Fire and Safety
5. Damage and/or Destruction of Property

**83.3%** increase in academic integrity cases



#### Recidivism rate:

**2** drugs & alcohol **20** academic integrity

### TESTING SERVICES

 **4,577** total exams

**2,312** accommodation exams for ODS registered students

 **1,392** make-up exams  
**55** online ACT prep attendance

## STUDENT ENGAGEMENT, ADVOCACY & LEADERSHIP



**10,624** ShockerSync Users



**187** Registered Student Organizations

**8,136** engaged students

**2,023** Registered Student Organization Events

**95+** SEAL leaders with a **76%** retention rate



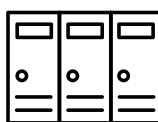
**11,260** hours of community service



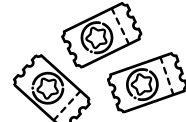
**147** Community Organization served by Community Service Board

**26** Greek chapters

**782** Greek members



The Shocker Support Locker served **550** students over **1,705** total visits



**126** SEAL hosted events



**\$61,300** raised and donated by chapters to national and local philanthropies

### STUDENT HEALTH SERVICES

**18,632** secured messages between provider and students



**9,323** appointments



**55%** increase from previous school year

#### Top 5 Diagnoses

1. Sore Throats
2. Screening for infections with STIs
3. Generalized Anxiety Disorder
4. Major Depressive Disorder
5. Encounter for desensitization to allergens

**35%** increase in prescriptions

**5,355** total

**110%** increase in vaccinations

**725** vaccinations excluding COVID-19



**6,268** total lab tests excluding COVID-19

**44%** increase

**86%** of students felt SHS contributed positively to their campus experience

## TOGETHER AS A DIVISION

**1** NEWLY ESTABLISHED OFFICE OF SHOCKERSTRENGTHS STUDENT AFFAIRS STAFF ENGAGEMENT.

**42** ASSESSMENT INSTRUMENTS HAVE BEEN DESIGNED AND AND IMPLEMENTED.

**469** STUDENT AFFAIRS STUDENT EMPLOYEES WERE PAID  
**\$3.7 MILLION**  
 IN STUDENT WAGES.

OVER **177,854** STUDENT, FACULTY, STAFF, AND COMMUNITY CONNECTIONS WERE MADE ACROSS **13** DEPARTMENTS.

### OUR PRIORITIES

- CREATING/MAINTAINING A WELCOMING AND INCLUSIVE ENVIRONMENT
- DEVELOPING A SUSTAINABLE STAFFING MODEL AND BUDGET FOR THE DIVISION
- ADVANCING SEM/NISS/STRATPLAN/DEI PLANS TO ENHANCE STUDENT SUCCESS

**Connecting EVERY STUDENT**

The Division of Student Affairs creates opportunities and experiences that **EDUCATE, EQUIP, and EMPOWER** students.