



# TRIO Talent Search 2012-2013 Annual Report

# Table of Contents

---

**Message from the Director**

**Program Description and Mission Statement**

**Program Goals and Objectives**

**Services and Activities**

**Organizational Chart**

**Program Staff**

**Year at a Glance**

**Annual Report CD**



## Message from the Director

---



*Larry Ramos*

It gives me tremendous pleasure to introduce this annual report. This marks the 36th year of the program's existence in opening doors for low income and potential first generation college students to educational opportunities. While the results in this report are outstanding, we are keenly aware that there are many more students who could benefit from the program staff and the services offered. As it stands, we serve a small fraction of the eligible student population in the target area (Wichita Public Schools). Keeping this in mind, the staff had to make some difficult decisions on which students they felt might benefit the most and which students would take full advantage of all program services. Given the results, it appears the program staff did a superb job in identifying and selecting students who demonstrated exemplary commitment to their educational goals.

For the first time, a higher percentage of our graduates enrolled in a four-year postsecondary institution than a two-year program. Ultimately, we want our students to enter and complete a baccalaureate. The Talent Search counselors are to be commended for preparing and giving students the confidence to enroll in a major institution. It is hoped and expected that these students will receive a college degree within six years from the first time they entered postsecondary. The Middle School Summer Enrichment Program, supported in part by the College Access Challenge Grant, is one of the first ways that the program begins the preparation of students, and their parents, for postsecondary. The summer program continues to gain momentum and is now one of the premier summer programs in the Wichita metro area.

The program has widespread support from the university including President John Bardo and Vice President for Campus Life and University Relations Wade Robinson. The program reports to Associate Vice President for Campus Life Deltha Q. Colvin. The support these individuals provide is important to the success of the program and ensures its longevity. Colvin has responsibility over nine TRIO programs, Gaining Early Awareness and Readiness for Undergraduate Programs, and the Office of Disability Services at Wichita State University. Her 40 plus years in providing leadership and vision sustain the programs and will continue to do so for years to come.

# Program Description

---

TRIO Talent Search is the TRIO program created under the Higher Education Act of 1965. Other TRIO programs at Wichita State University include Communication Upward Bound, Disability Support Services, Educational Opportunity Centers, McNair Scholars Program, Student Support Services, Upward Bound Math-Science, Upward Bound Wichita Prep and Veterans Upward Bound.

For the 2012-2013 academic year, Talent Search was awarded funding in the amount of \$513,873 from the U.S. Department of Education. The program was awarded an additional grant of \$152,700 from the Kansas Board of Regents to support the Middle School Summer Enrichment Program, increase the number and scope of campus visits during the year, offer additional workshops on financial literacy and college entrance exams, and increase services provided during the Homework Assistance Program. Finally, the Kansas Department of Education awarded the program a grant in the amount of \$1,043.12 for a summer food service program, which provided a nutritious breakfast to students attending the Summer Enrichment Program.

The program is housed on the Wichita State University main campus. The program employed a full-time director, associate director/statistician, middle school director, three educational development assistants, senior administrative assistant as well as part-time tutors and student assistants. While most of the grant funds were allocated to services provided to students, funds were included for professional staff development, equipment, supplies and other operating expenditures to allow the program to better serve its students.

## Mission Statement

*The mission of the TRIO Talent Search program is to identify, encourage and assist low income and potential first generation college students to complete a secondary education and pursue postsecondary education.*

# Program Goals and Objectives

---

## **Program Goals and Objectives**

In 2011, the program was given the option of using the approved goals and objectives as stated in the grant proposal or adopting the mandatory program objectives developed by the U.S. Department of Education. The program opted to respond to the mandatory objectives and identify percentages based on the approved grant.

### **Secondary School Promotion:**

Ninety percent of non-senior participants served each project year will complete the current academic year and continue in school for the next academic year, at the next grade level.

**The program achieved 100 percent**

### **Secondary School Graduation:**

Eighty percent of seniors served during the project year will graduate during the project year with a regular secondary school diploma within the standard number of years.

**The program achieved 93 percent**

### **Secondary School Graduation: (Rigorous Secondary School Program of Study)**

Fifteen percent of seniors served during the project year will complete a rigorous secondary school program and will graduate during project year with a regular secondary school diploma within the standard number of years.

**The program achieved 43 percent**

### **Postsecondary Enrollment:**

Sixty-five percent of participants, who graduated with a regular secondary school diploma, during the project year, will enroll in an institution of higher education by the fall term immediately following high school graduation or will have received notification, by the fall term immediately following high school, from an institution of higher education, of acceptance but deferred enrollment until the next academic term (e.g. spring term).

**The program achieved 69 percent**

### **Postsecondary Education Enrollment:**

Forty-five percent of participants served during the project year, which enrolled in an institution of higher education, by the fall term immediately following high school graduation or by the next academic term (e.g. spring term) as a result of acceptance but deferred enrollment will, complete a program of postsecondary education within six years.

***The program will be required to report on this objective in 2016.***

Please note the following definition:

**Enrolled** – a participant who has completed the registration requirements (except for the payment of tuition and fees) at the institution that he or she is attending.

# Services and Activities

---

To ensure students' educational success, the program offers a wide array of services and activities to meet their needs. The following provides a brief overview of the services and activities provided by the program.

- **Academic advising, assistance in pre-college and rigorous course planning and college course selection**  
Counselors advise students on rigorous pre-college curriculum to ensure postsecondary eligibility. A month-long summer program on high school preparation assists eighth grade students in making a successful transition from middle school to high school. Graduating seniors are advised on college course offerings and possible majors. Juniors and seniors are advised on the procedures to take classes for college credit while still in high school.

- **Assistance in completing college admission applications and financial aid forms**  
Students receive technical assistance in completing college admission applications and financial aid forms. A computer lab is available for program students to complete online applications and to complete the FAFSA. Counselors review applications and students are advised of admission application fee waivers/grants for TRIO participants available at many colleges and universities. Workshops are offered throughout the year providing students information on financial literacy, scholarships and other related topics. This year, the program began holding a workshop titled FAFSA FINISH LINE. The day-long workshop is held on a district in-service day, so students can attend the workshop for help completing the FAFSA

- **Assistance in preparing for college entrance examinations**  
Program staff advises students on preparing for the ACT and SAT exams. The program's resource library houses study guides and practice test materials. Counselors advise students on test taking strategies, good study habits, what to expect on exam day, and other topics in order to help prepare students for exams. ACT and SAT registration fee waivers are provided to students who meet limited income guidelines. For the second year, Talent Search has helped sponsored the district wide ACT workshops with USD 259 and the Wichita State University Counseling and Testing Center. ENGAGE helps assess students' self-reported psychosocial attributes, determine their levels of academic risk, and identify interventions to help them succeed. Counselors review the survey results with students to help them achieve success.

- **Mentoring and career counseling**  
Students are paired with program staff or other professionals for mentoring relationships. Students shadow staff members during the year and are exposed to the day-to-day responsibilities of TRIO personnel. In addition, workshops are conducted in middle schools, high schools and community agencies on career and educational opportunities. This year, Talent Search sponsored two students to attend the National Student Leadership Congress.

- **Tutorial services and Summer Enrichment Program (SEP) for middle school students**  
Tutoring and homework assistance is provided to program students. The program maintains a staff of five tutors to supplement learning for math and other subjects. .

---

During the months of June and July, up to 75 students are selected for the program's Summer Enrichment Program (SEP). The SEP is held on the WSU campus and students attend classes for math, language arts, science, life/study skills and computer technology. During the SEP, students took the ENGAGE survey and discussed results with educational development assistants to form future study plans. Students attend educational field trips and campus visits. Motivational speakers are invited to challenge students. At the end of each summer session, students participate in a talent showcase and awards and recognition ceremony.

- **Guidance on secondary school re-entry or entry to other programs leading to a secondary school diploma or its equivalent**

Counselors assist students who have dropped out of high school to re-enter school or enroll in an alternative education program. The purpose of this support is to assist students in receiving their high school diploma, high school equivalency, or GED so that they may be eligible to apply to postsecondary institutions.

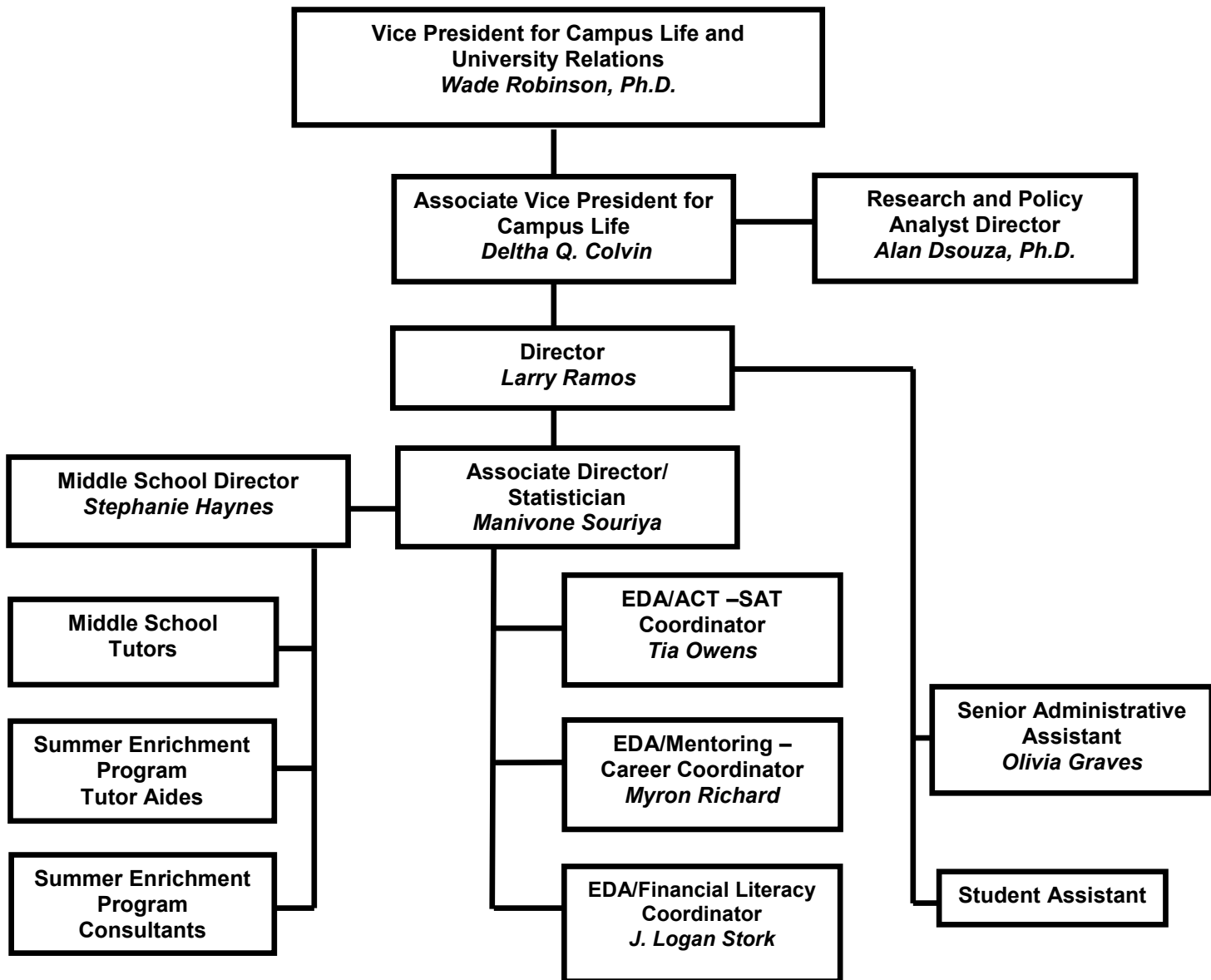
- **Campus visits**

Students have the opportunity to go on campus visits throughout the year to learn about admissions, financial aid, housing options, majors and other college-related matters. The program has taken students to in-state and out-of-state postsecondary institutions.



# Organizational Chart

---





# Program Staff

---



Back Row: (left to right) Myron Richard, Mani Souriya and J. Logan Stork  
Middle Row: (left to right): Larry Ramos—Director, Tia Owens and Stephanie Haynes  
Front: Olivia Graves

**Larry Ramos, Director**

**Manivone Souriya, Associate Director/Statistician**

**Stephanie Haynes, Middle School Director**

**Tia Owens, Educational Development Assistant/ACT-SAT Coordinator**

**Myron Richard, Educational Development Assistant/Mentoring-Career Coordinator**

**J. Logan Stork, Educational Development Assistant/Financial Aid Coordinator**

**Olivia Graves, Senior Administrative Assistant**

# Year at a Glance

---

Talent Search participates in various educational and cultural activities. The timeline highlights some of the year's activities.

## SEPTEMBER



College Jump Start

## OCTOBER



Career Fair at Century II

## NOVEMBER



Education Development Assistant/  
Mentoring Coordinator Myron  
Richard received the 15 years of  
Service Award

## DECEMBER



Wichita State University Campus  
Visit

## JANUARY



College Student Panel at Marshall  
Middle School

## FEBRUARY



National TRIO Day

---

## **MARCH**



**Missouri Spring Break Campus Visit Trip**

## **APRIL**



**TRIO-GEARUP Scholars Dinner**

## **MAY**



**City-wide ACT Prep Work Shop at North High School**

## **JUNE**



**National Student Leadership Council**

## **JULY**



**Summer Enrichment Program SEA LIFE Aquarium**

## **AUGUST**



**Convocation 2013**

# **Annual Report Contents**

*Highlighted Campus Visits*  
*College Readiness Activities*  
*Special Programs*  
*Professional Development*  
*Program Statistics*  
*Program Evaluations*  
*A Movie in Pictures*

*This CD features an audio introduction*



**TRIO Talent Search  
Wichita State University  
1845 Fairmount Street  
Wichita, KS 67260-0096**

**Phone: (316) 978-3127  
Fax: (316) 978-3527**

**[www.wichita.edu/talentsearch](http://www.wichita.edu/talentsearch)**

*TRIO Talent Search/Project Discovery is 100% funded by the United States Department of Education and is hosted by Wichita State University. Funds for 2012-2013 were \$513,873.*

*Notice of Nondiscrimination*

*Wichita State University does not discriminate in its programs and activities on the basis of race, religion, color, national origin, gender, age, sexual orientation, marital status, political affiliation, status as a veteran, genetic information or disability. The following person has been designated to handle inquiries regarding nondiscrimination policies: Director, Office of Equal Employment Opportunity, Wichita State University, 1845 Fairmount, Wichita KS 67260-0205; telephone (316) 978-6791.*

