

Student Retention and Graduation Rates Quick Facts

This file contains retention and graduation rates for new freshmen and new transfer students.

Figure 1: Three Year Rolling Average Retention and Graduation Rates for First-time Full-time IPEDS-based* Freshmen

Table 1: Annual Retention Rates of First-time Full-time IPEDS-based Freshmen

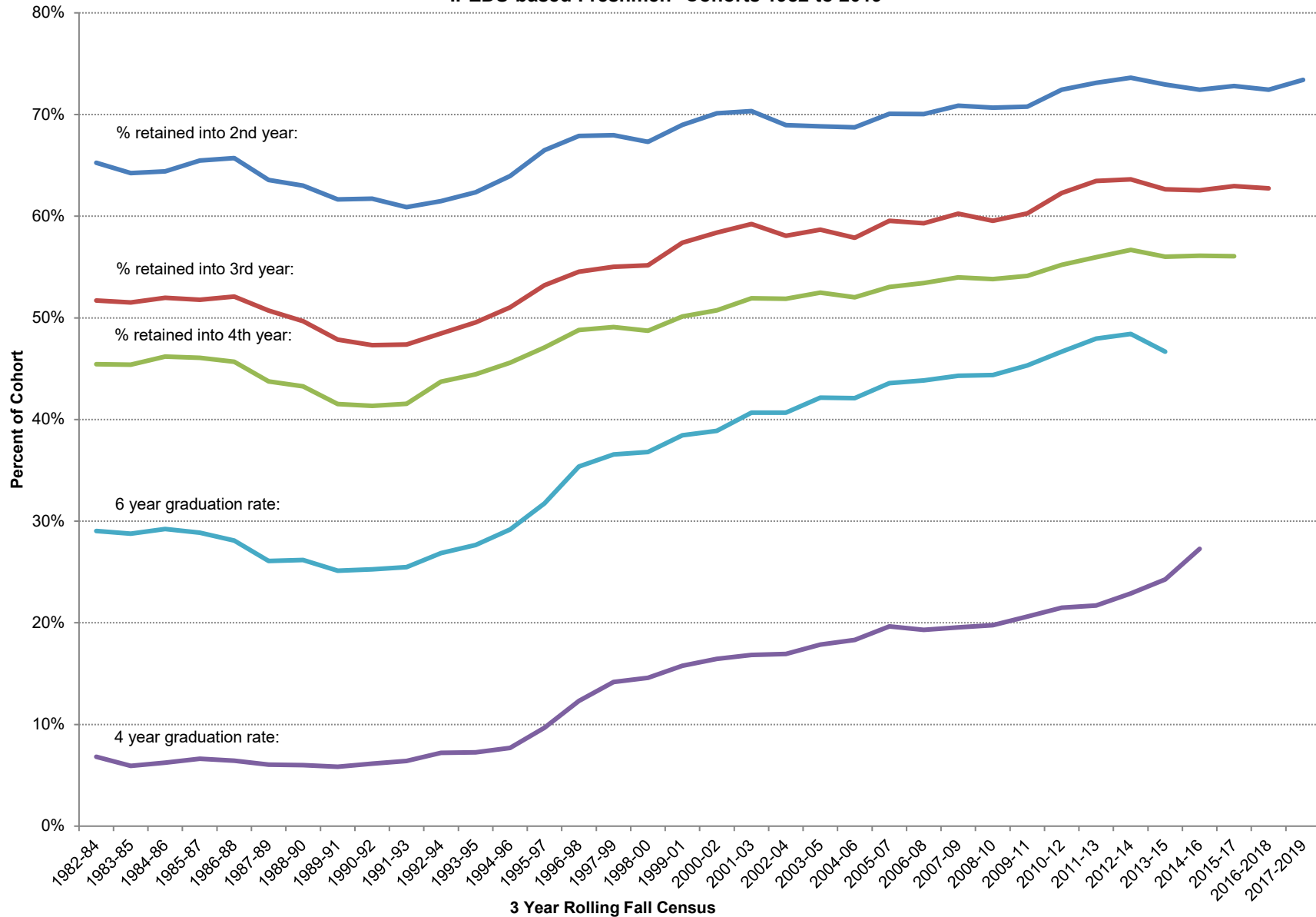
Table 2: Annual Graduation Rates of First-time Full-time IPEDS-based Freshmen

Table 3: Student Retention Rates for New IPEDS-based Freshmen and Transfers

Table 4: Three Year Rolling Student Retention Rates for New IPEDS-based Freshmen and Transfers

*IPEDS-based Freshmen are students who have no post-secondary hours after their High School graduation date, excludes the IPEDS new summer students inclusion; IPEDS freshmen can arrive with enough college credit to start as sophomores or juniors.

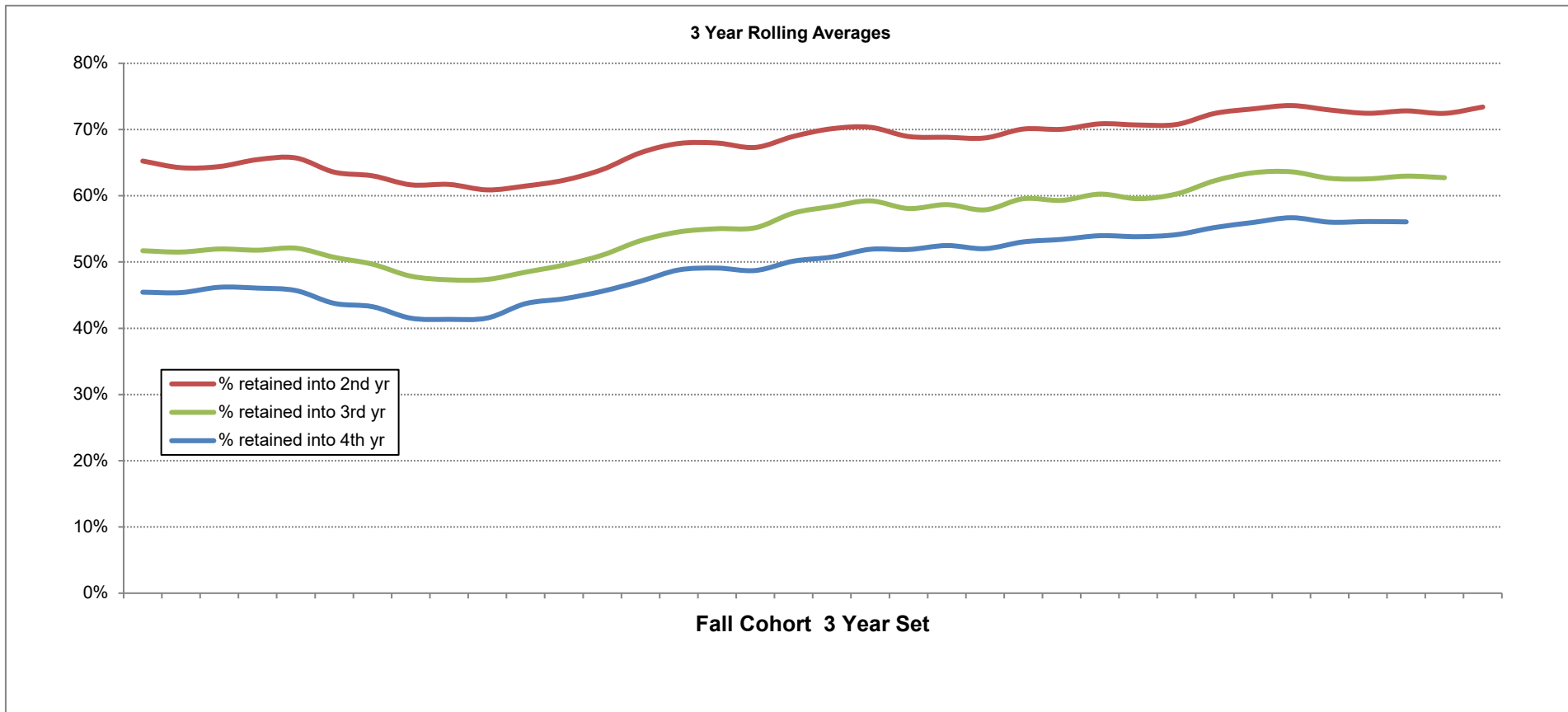
Figure 1: Three Year Rolling Average Retention and Graduation Rates for First-time Full-time IPEDS-based Freshmen* Cohorts 1982 to 2019



* Cohorts are based on the 1st occurrence of the new IPEDS- based freshmen student indicator in the Fall Census (20th day) frozen tables in which the student was enrolled for 12 or more hours. IPEDS-based freshmen can arrive with enough college credit to start as sophomores or juniors.

Table 1: Summary Annual Retention Rates of First-time Full-time IPEDS-based Freshmen*

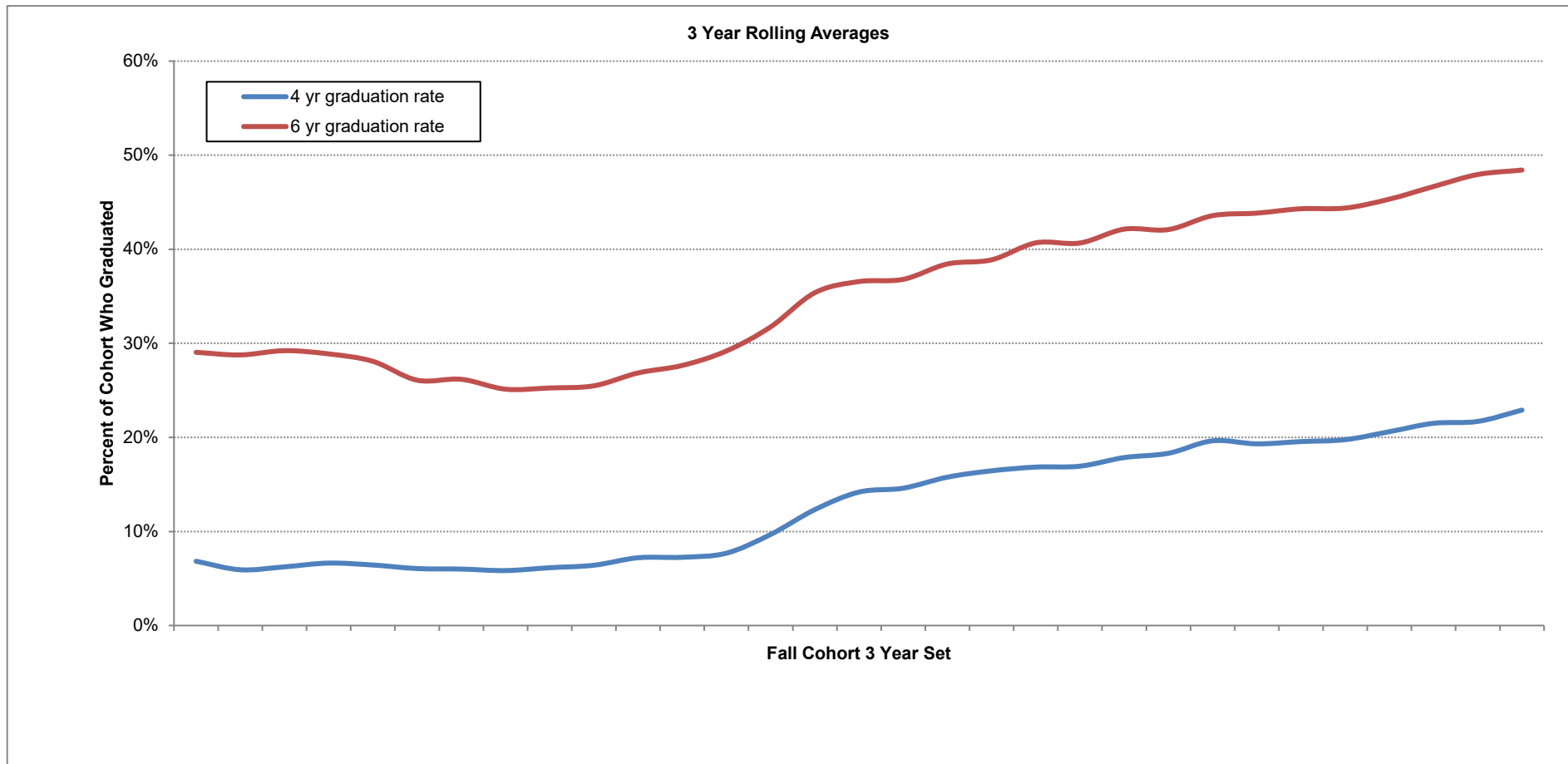
% of cohort who are retained:	Year of Fall Cohorts												weighted 3 yr rolling avg		
	2008	2009	2010	2011	2012	2013	2014	2015	2016	2017	2018	2019	2014-17	2015-16	2016-19
% retained into 2nd yr	70.0%	69.7%	72.6%	70.2%	74.5%	74.6%	72.0%	72.4%	73.0%	73.0%	71.5%	75.7%	72.8%	72.4%	73.4%
% retained into 3rd yr	59.4%	58.5%	60.8%	61.5%	64.3%	64.5%	62.2%	61.3%	64.0%	63.4%	61.0%	n/a	63.0%	62.7%	n/a
% retained into 4th yr	53.6%	52.4%	55.6%	54.5%	55.5%	57.8%	56.7%	53.5%	57.8%	56.5%	n/a	n/a	56.1%	n/a	n/a



*Cohorts are based on the 1st occurrence of the new IPEDS-based freshmen student indicator on the Fall Census (20th day) frozen tables in which the student was enrolled in 12 or more credit hours. IPEDS-based freshmen can arrive with enough college credit to start as sophomores or juniors.

Table 2: Annual Graduation Rates for First-time Full-time IPEDS-based Freshmen*

% of cohort who graduated:	Year of Fall Cohorts												weighted 3 yr rolling avg		
	2008	2009	2010	2011	2012	2013	2014	2015	2016	2017	2018	2019	2010-12	2011-13	2012-14
% graduated in 4 years	19.5%	17.8%	22.2%	21.9%	20.4%	22.7%	25.2%	24.7%	n/a	n/a	n/a	n/a	22.9%	24.3%	27.3%
% graduated in 6 years	44.2%	42.7%	46.4%	47.0%	46.6%	50.2%	48.4%	n/a	n/a	n/a	n/a	n/a	48.4%	46.7%	n/a



*Cohorts are based on the 1st occurrence of the new IPEDS-based freshmen student indicator on the Fall Census (20th day) frozen tables in which the student was enrolled in 12 or more credit hours; IPEDS-based freshmen can arrive with enough college credit to start as sophomores or juniors; Graduation rates based on first Bachelor degree post cohort year; degree year is based on an academic year comprised of a fall-spring-summer sequence.

Table 3: Student Retention Rates for New IPEDS-based Freshmen and Transfers, Cohorts 2007 to 2019

Cohort type*:	Year of Fall Cohort												
	2007	2008	2009	2010	2011	2012	2013	2014	2015	2016	2017	2018	2019
<u>New IPEDS-based Freshmen:</u>													
cohort base	1,259	1,344	1,300	1,202	1,270	1,293	1,274	1,427	1,294	1,476	1,510	1,690	1,655
% retained into 2nd yr	70.7%	67.7%	68.0%	70.0%	67.7%	72.4%	72.9%	70.7%	71.0%	71.5%	72.1%	70.7%	74.4%
% retained into 3rd yr	60.4%	57.1%	56.7%	58.9%	59.1%	62.2%	62.9%	61.0%	60.1%	62.3%	62.5%	59.9%	n/a
% retained into 4th yr	53.9%	51.6%	50.2%	53.4%	52.7%	53.9%	56.0%	55.5%	52.6%	56.2%	55.5%	n/a	n/a
4 yr graduation rate	20.3%	18.5%	16.7%	20.7%	21.0%	19.6%	21.8%	24.5%	23.8%	n/a	n/a	n/a	n/a
6 yr graduation rate	43.8%	42.3%	40.4%	43.6%	45.0%	44.9%	48.4%	47.2%	n/a	n/a	n/a	n/a	n/a
<u>New Full-time IPEDS-based Freshmen:</u>													
cohort base	1,145	1,249	1,206	1,103	1,190	1,219	1,218	1,384	1,247	1,420	1,475	1,626	1,602
% retained into 2nd yr	73.1%	70.0%	69.7%	72.6%	70.2%	74.5%	74.6%	72.0%	72.4%	73.0%	73.0%	71.5%	75.7%
% retained into 3rd yr	63.0%	59.4%	58.5%	60.8%	61.5%	64.3%	64.5%	62.2%	61.3%	64.0%	63.4%	61.0%	n/a
% retained into 4th yr	56.0%	53.6%	52.4%	55.6%	54.5%	55.5%	57.8%	56.7%	53.5%	57.8%	56.5%	n/a	n/a
4 yr graduation rate	21.5%	19.5%	17.8%	22.2%	21.9%	20.4%	22.7%	25.2%	24.7%	n/a	n/a	n/a	n/a
6 yr graduation rate	46.1%	44.2%	42.7%	46.4%	47.0%	46.6%	50.2%	48.4%	n/a	n/a	n/a	n/a	n/a
<u>New Transfers:</u>													
cohort base	1,145	1,160	1,261	1,232	1,340	1,329	1,287	1,340	1,221	1,238	1,215	1,297	1,186
% retained into 2nd yr	70.0%	67.0%	68.0%	68.1%	68.4%	68.5%	67.1%	68.7%	68.9%	69.8%	69.1%	70.9%	72.1%
<u>New Transfer Full-time Freshmen:</u>													
cohort base	250	387	230	227	268	157	153	166	146	143	158	136	123
% retained into 2nd yr	67.6%	69.0%	68.3%	63.4%	63.1%	61.8%	61.4%	66.3%	64.4%	67.8%	63.3%	64.0%	61.0%
% retained into 3rd yr	50.0%	49.4%	53.5%	48.0%	50.0%	46.5%	47.7%	53.0%	56.2%	53.8%	53.2%	52.9%	n/a
% retained into 4th yr	34.8%	27.9%	41.7%	39.2%	39.9%	38.9%	45.1%	42.8%	33.6%	39.9%	39.2%	n/a	n/a
4 yr graduation rate	39.2%	41.6%	23.9%	28.2%	30.6%	19.7%	23.5%	23.5%	28.8%	n/a	n/a	n/a	n/a
6 yr graduation rate	51.2%	51.2%	40.0%	41.4%	44.0%	27.4%	37.9%	41.6%	n/a	n/a	n/a	n/a	n/a
<u>New Transfer Sophomores:</u>													
cohort base	352	260	400	372	419	453	433	436	400	421	450	451	398
% retained into 2nd yr	75.0%	69.2%	67.8%	71.8%	69.5%	72.2%	67.7%	68.1%	72.0%	70.1%	69.6%	73.6%	73.6%
<u>New Transfer Juniors:</u>													
cohort base	335	233	387	388	380	471	456	479	460	467	413	470	456
% retained into 2nd yr	71.6%	73.0%	73.9%	73.5%	77.4%	73.5%	74.8%	73.7%	71.7%	74.9%	75.5%	74.3%	78.1%

*Cohorts are based on the 1st occurrence of the new IPEDS-based freshmen and new transfer student indicators in the Fall Census (20th day) frozen tables; IPEDS-based freshmen can arrive with enough credit to start as sophomores or juniors; student class for new transfers are based on the student class level of the cohort term within the Fall 20th day frozen tables. Graduation rates based on 1st Bachelor degree.

Table 4: Three Year Rolling Student Retention Rates for New IPEDS-based Freshmen and Transfers, Cohorts 2005-2007 to 2017-2019

Cohort type*:	3 Year Rolling Average of Fall Cohort												
	2005-2007	2006-2008	2007-2009	2008-2010	2009-2011	2010-2012	2011-2013	2012-2014	2013-2015	2014-2016	2015-2017	2016-2018	2017-2019
<u>New IPEDS-based Freshmen:</u>													
3 yr rolling average cohort base	1,241	1,276	1,301	1,282	1,257	1,255	1,279	1,331	1,332	1,399	1,427	1,559	1,618
% retained into 2nd yr	68.0%	67.8%	68.8%	68.5%	68.5%	70.0%	71.0%	72.0%	71.5%	71.1%	71.6%	71.4%	72.4%
% retained into 3rd yr	57.4%	57.0%	58.0%	57.5%	58.2%	60.1%	61.4%	62.0%	61.3%	61.2%	61.7%	61.5%	n/a
% retained into 4th yr	51.0%	51.3%	51.8%	51.7%	52.0%	53.3%	54.2%	55.2%	54.7%	54.8%	54.8%	n/a	n/a
4 yr graduation rate	18.4%	18.3%	18.5%	18.6%	19.4%	20.5%	20.8%	22.1%	23.4%	26.4%	n/a	n/a	n/a
6 yr graduation rate	41.1%	41.7%	42.1%	42.0%	43.0%	44.5%	46.1%	46.8%	45.3%	n/a	n/a	n/a	n/a
<u>New Full-time IPEDS-based Freshmen:</u>													
3 yr rolling average cohort base	1,141	1,177	1,200	1,186	1,166	1,171	1,209	1,274	1,283	1,350	1,381	1,507	1,568
% retained into 2nd yr	70.1%	70.0%	70.9%	70.7%	70.8%	72.4%	73.1%	73.6%	73.0%	72.5%	72.8%	72.4%	73.4%
% retained into 3rd yr	59.6%	59.3%	60.3%	59.6%	60.3%	62.3%	63.5%	63.6%	62.6%	62.6%	63.0%	62.7%	n/a
% retained into 4th yr	53.0%	53.4%	54.0%	53.8%	54.1%	55.2%	56.0%	56.7%	56.0%	56.1%	56.1%	n/a	n/a
4 yr graduation rate	19.6%	19.3%	19.6%	19.8%	20.6%	21.5%	21.7%	22.9%	24.3%	27.3%	n/a	n/a	n/a
6 yr graduation rate	43.6%	43.8%	44.3%	44.4%	45.3%	46.7%	47.9%	48.4%	46.7%	n/a	n/a	n/a	n/a
<u>New Transfers:</u>													
3 yr rolling average cohort base	1,223	1,211	1,189	1,218	1,278	1,300	1,319	1,319	1,283	1,266	1,225	1,250	1,233
% retained into 2nd yr	67.8%	68.2%	68.3%	67.7%	68.2%	68.3%	68.0%	68.1%	68.2%	69.1%	69.3%	70.0%	70.7%
<u>New Transfer Full-time Freshmen:</u>													
3 yr rolling average cohort base	251	329	289	281	242	217	193	159	155	152	149	146	139
% retained into 2nd yr	66.0%	68.3%	68.4%	67.3%	64.8%	62.9%	62.3%	63.2%	64.1%	66.2%	65.1%	65.0%	62.8%
% retained into 3rd yr	49.8%	50.1%	50.6%	50.1%	50.5%	48.5%	48.4%	49.2%	52.3%	54.3%	54.4%	53.3%	n/a
% retained into 4th yr	33.1%	30.7%	33.6%	34.7%	40.3%	39.4%	41.0%	42.2%	40.6%	38.9%	37.6%	n/a	n/a
4 yr graduation rate	36.1%	39.3%	36.2%	33.2%	27.7%	27.1%	25.8%	22.3%	25.2%	24.4%	n/a	n/a	n/a
6 yr graduation rate	47.5%	50.0%	48.2%	45.5%	41.9%	39.1%	37.9%	35.7%	40.2%	n/a	n/a	n/a	n/a
<u>New Transfer Sophomores:</u>													
3 yr rolling average cohort base	359	312	337	344	397	415	435	441	423	419	424	441	433
% retained into 2nd yr	70.7%	71.8%	70.7%	69.6%	69.6%	71.1%	69.8%	69.4%	69.2%	70.0%	70.5%	71.1%	72.2%
<u>New Transfer Juniors:</u>													
3 yr rolling average cohort base	369	310	318	336	385	413	436	469	465	469	447	450	446
% retained into 2nd yr	71.9%	72.9%	72.9%	73.5%	74.9%	74.7%	75.1%	74.0%	73.4%	73.5%	74.0%	74.9%	76.0%

*Cohorts are based on the 1st occurrence of the new IPEDS-based freshmen and new transfer student indicators in the Fall Census (20th day) frozen tables; IPEDS-based freshmen can arrive with enough credit to start as sophomores or juniors; student class for new transfers are based on the student class level of the cohort term within the Fall 20th day frozen tables. Graduation rates based on 1st Bachelor degree.