



*Adult Higher Education Accessible Degrees
Complete to Compete
Project Overview*

Tim Peterson, Ph.D.

★ LEADING HIGHER EDUCATION ★



The nation faces an urgent and growing need for talent.

The Lumina Foundation reports that by 2025, *60 percent of Americans will need to hold a credential beyond high school* – a quality credential that prepares people for informed citizenship and economic success.

The national attainment rate for associate degrees and above is 42.4%

The Kansas rate is 45%

Only 3 Kansas counties are above 50%

The Kansas Hispanic rate is 18.4%

A Stronger Nation, Lumina Foundation, 2018

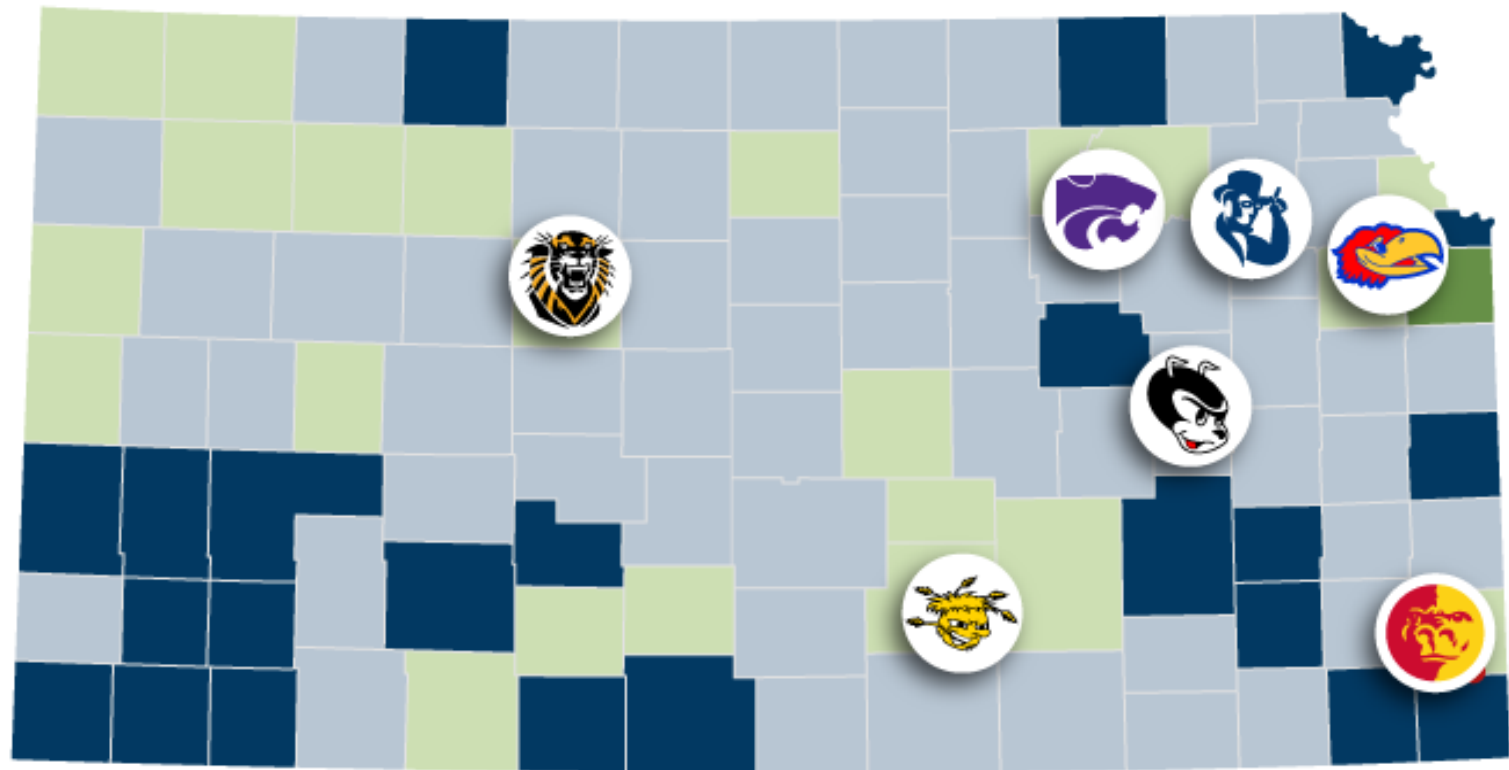
300,000 Kansans have some college
but no degree.

37,000 Kansans have 2 years or more
of college but no degree.

Nearly 1,000 “concentrators” left a
health science, IT or CJ program
in AY 2016 with no credential.

National Student Clearinghouse, 2017

HOW MANY KANSANS HAVE A COLLEGE DEGREE?



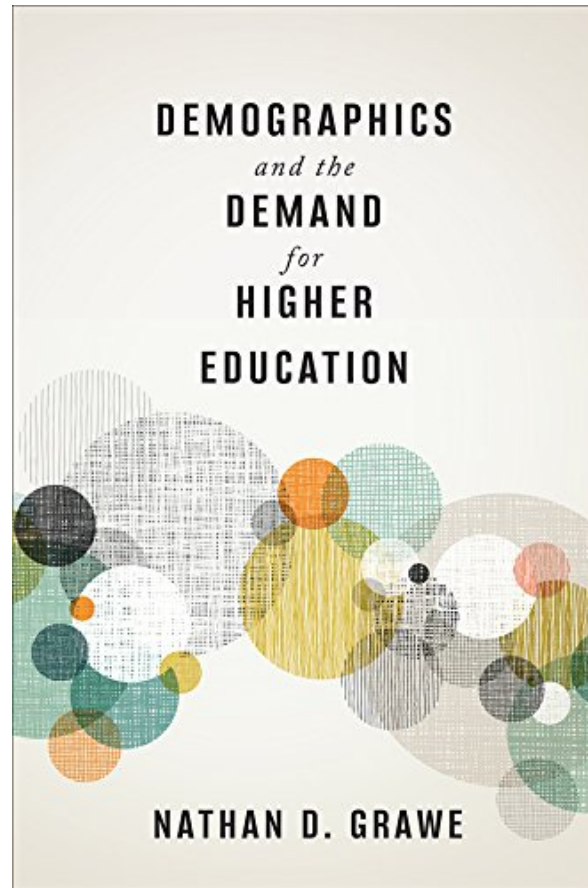
■ Less than 30% of adults

■ 40-59.9% of adults

■ 30-39.9% of adults

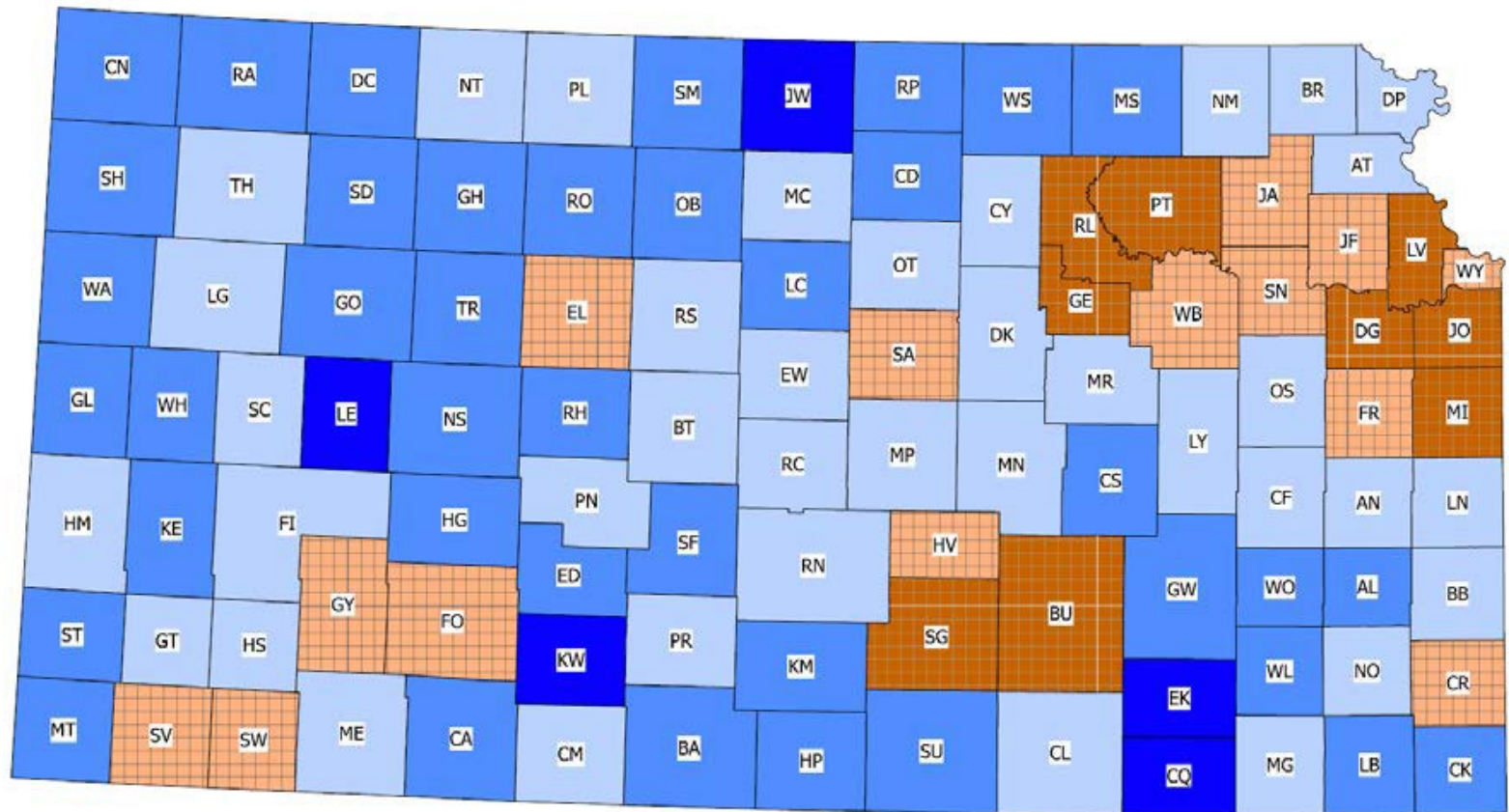
■ More than 60% of adults

Map: Kansas News Service | Source: Census data collated by the Lumina Foundation and Kansas Board of Regents.
Notes: Numbers refer to percent of adults aged 25-64 with an associate's degree or higher.



**By 2026 the number of college-aged students
in the Midwest will drop almost 15%.**

Source: Nathan D. Graue is the Ada M. Harrison Distinguished
Teaching Professor of the Social Sciences at Carleton College



Population Change (%)

■ -24.3% to -20.0%
 ■ -19.9% to -10.0%
 ■ -9.9% to -0.1%
 ■ 0.0% to 9.9%
 ■ 10.0% to 29.4%

82 Kansas counties (78%) lost population between 2000 – 2016

Kansas Population Projections 2016–2066

Total Population 2,907,289 - 3,637,037 25.1%

Age Group

Age 14 and under - 595,053 - 694,996 **16.8%**

Age 15 to 24 - 417,031 - 472,809 **13.4%**

Age 25 to 64 - 1,458,212 - 1,728,517 **18.5%**

***Age 65 and over* - 436,993 - 740,715 69.5%**

Race/Ethnicity

White, Non-Hispanic - 2,254,581 - 1,765,981 **-21.7%**

Black, Non-Hispanic - 192,710 - 271,921 **41.1%**

Other/Multiple Races Non-Hispanic - 121,517 - 289,622 **138.3%**

***Hispanic, Any Race* - 338,481 - 1,309,513 286.9%**

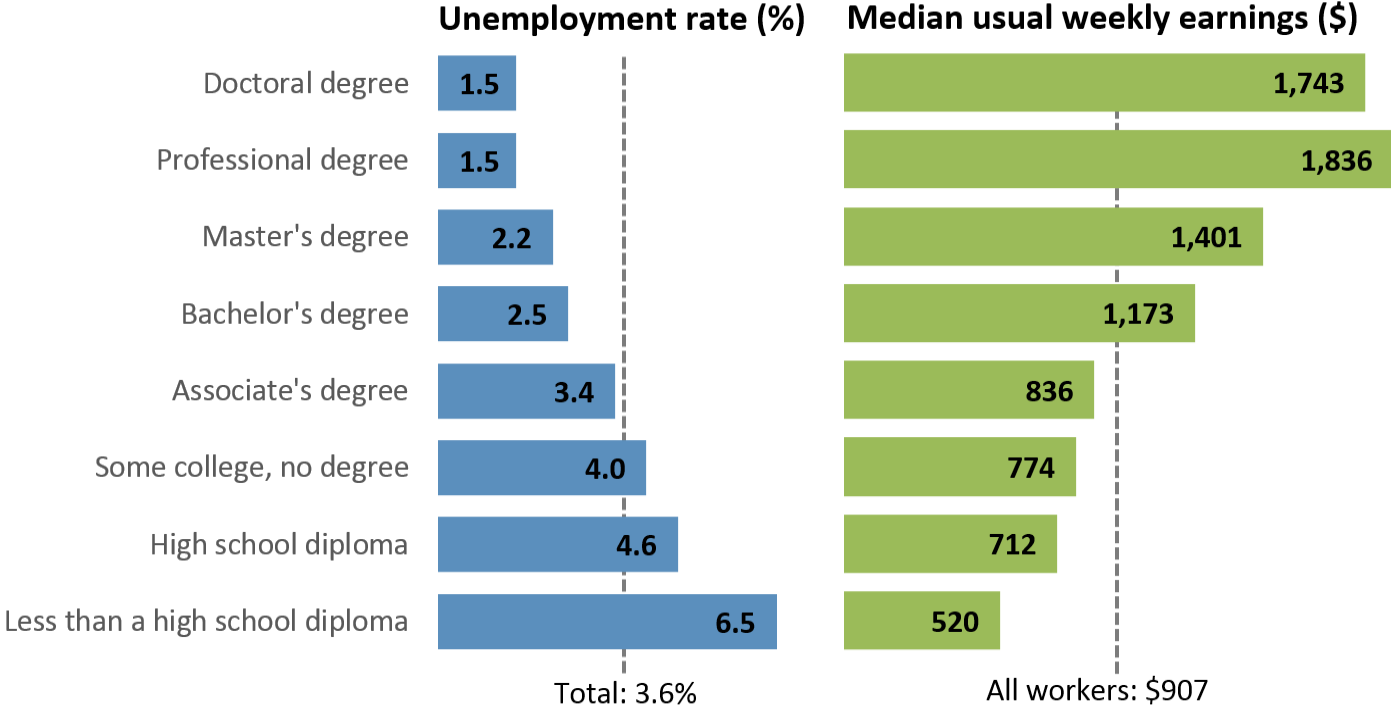
*Source: 2016 Kansas Population Projections by Race and Ethnicity,
Center for Economic Development and Business Research at Wichita State University.*

A postsecondary education credential is key to economic opportunity.

Research shows that on average, people with more education make more money than those with less.

Associate degree holders average about **\$200,000 more over a lifetime** than individuals with some college but no degree, while bachelor's degree holders average over **\$720,000 more**.

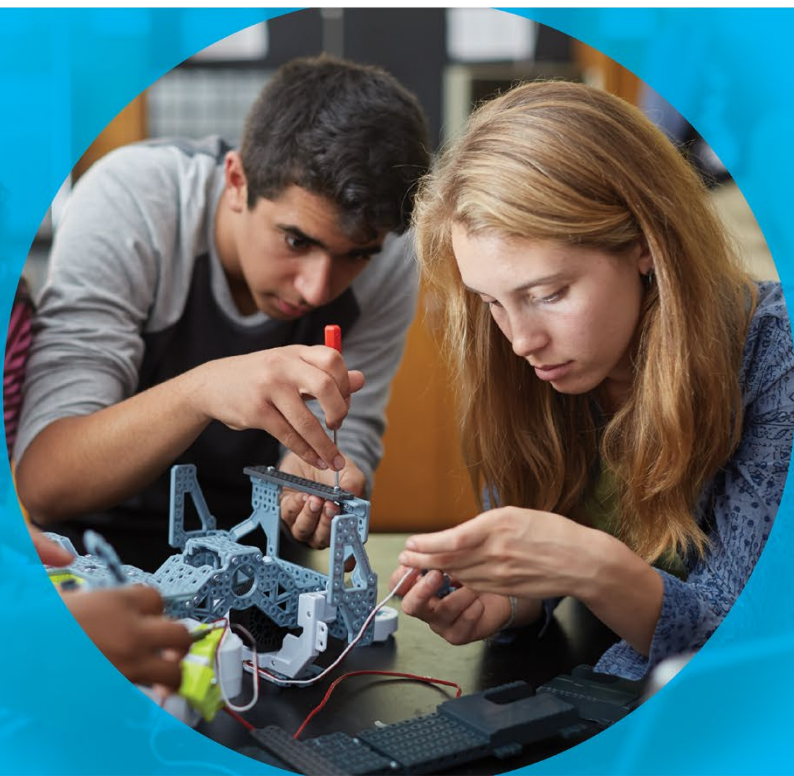
Unemployment rates and earnings by educational attainment, 2017



Note: Data are for persons age 25 and over. Earnings are for full-time wage and salary workers.
 Source: U.S. Bureau of Labor Statistics, Current Population Survey.

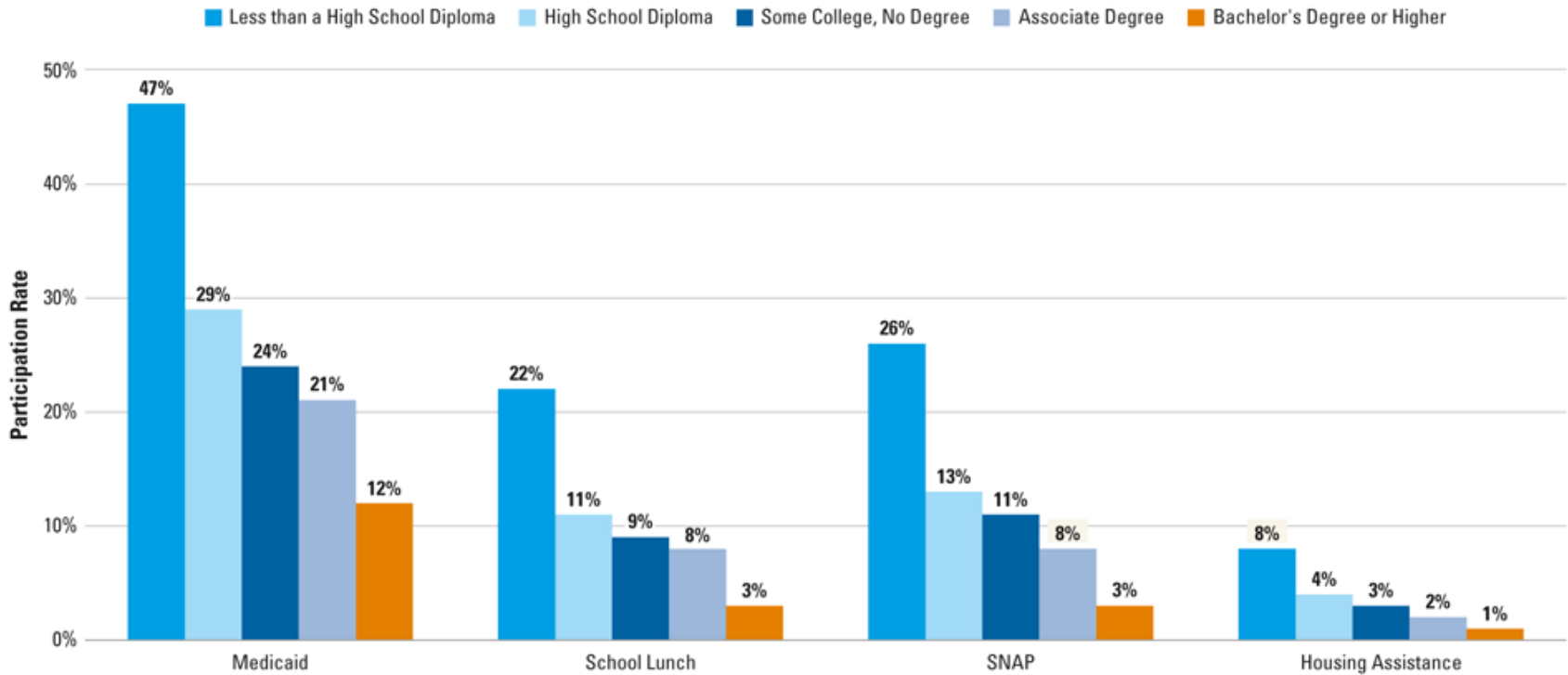
Trends in Higher Education Series

Education Pays 2016

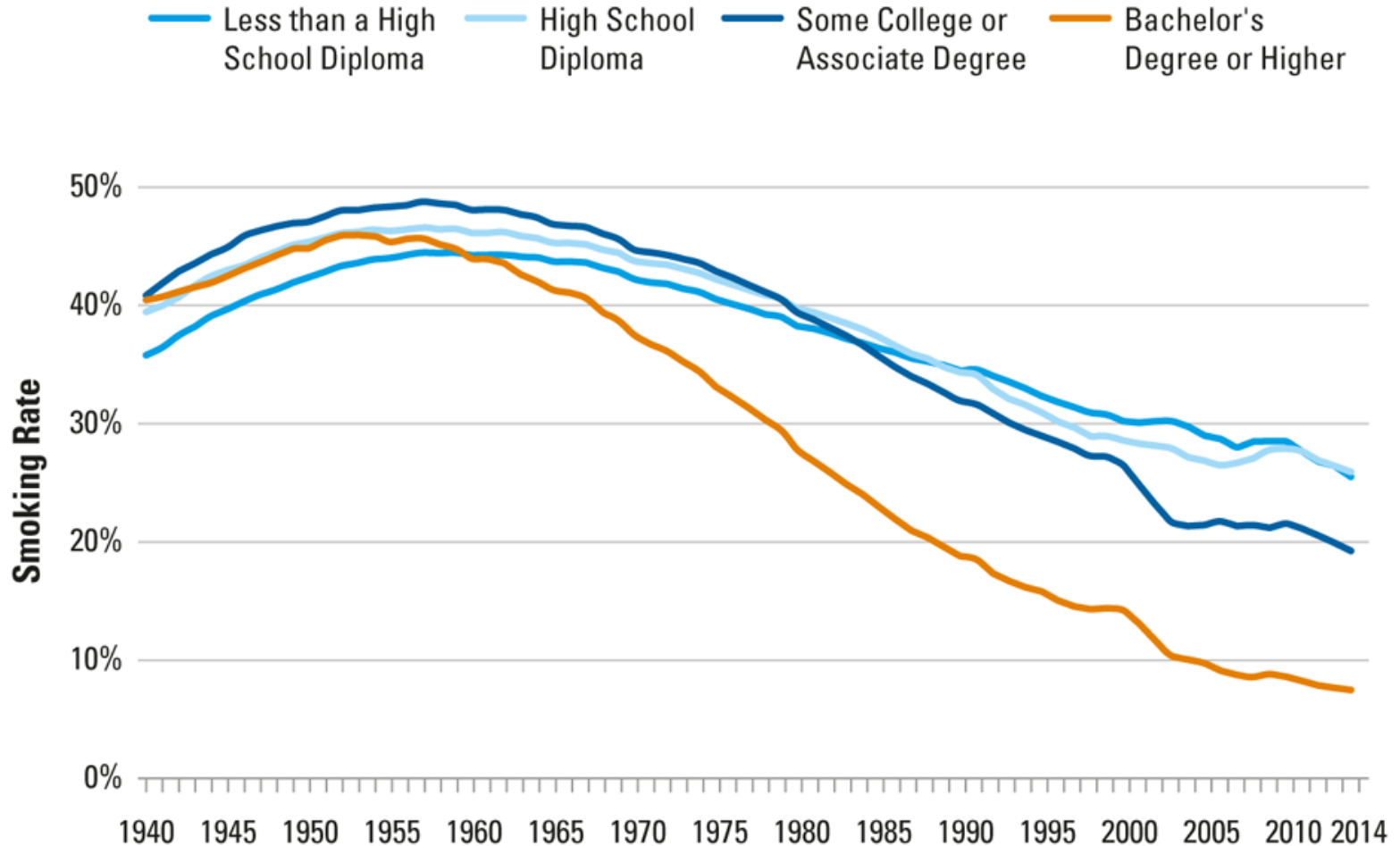


Percentage of Individuals Age 25 and Older Living in Households that Participated in Various Public Assistance Programs, by Education Level, 2015

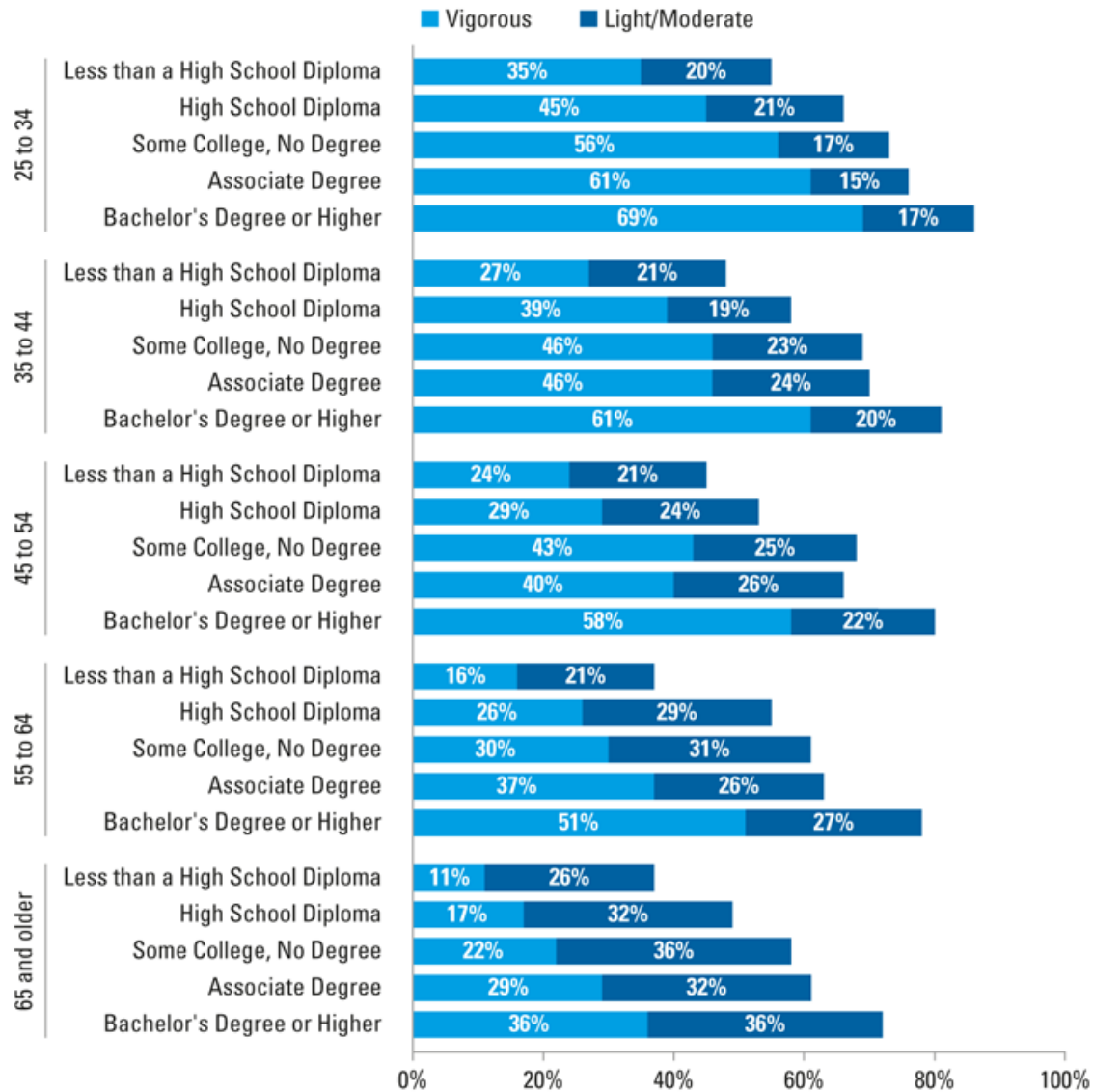
Source: The College Board, *Education Pays 2016*



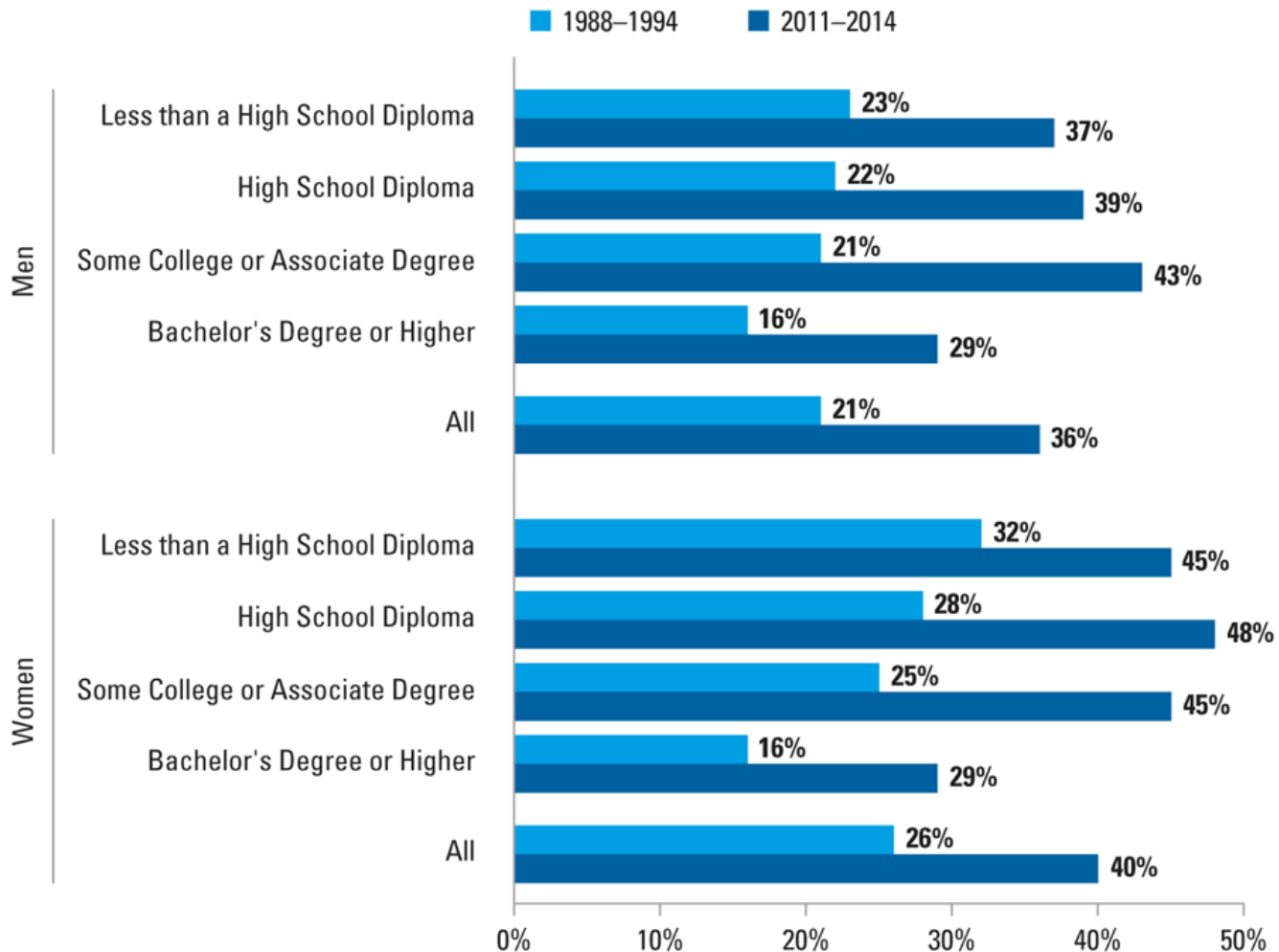
Smoking Rates Among Individuals Age 25 and Older by Education Level, 1940 to 2014



Exercise Rates Among Individuals Age 25 and Older by Age and Education Level, 2014

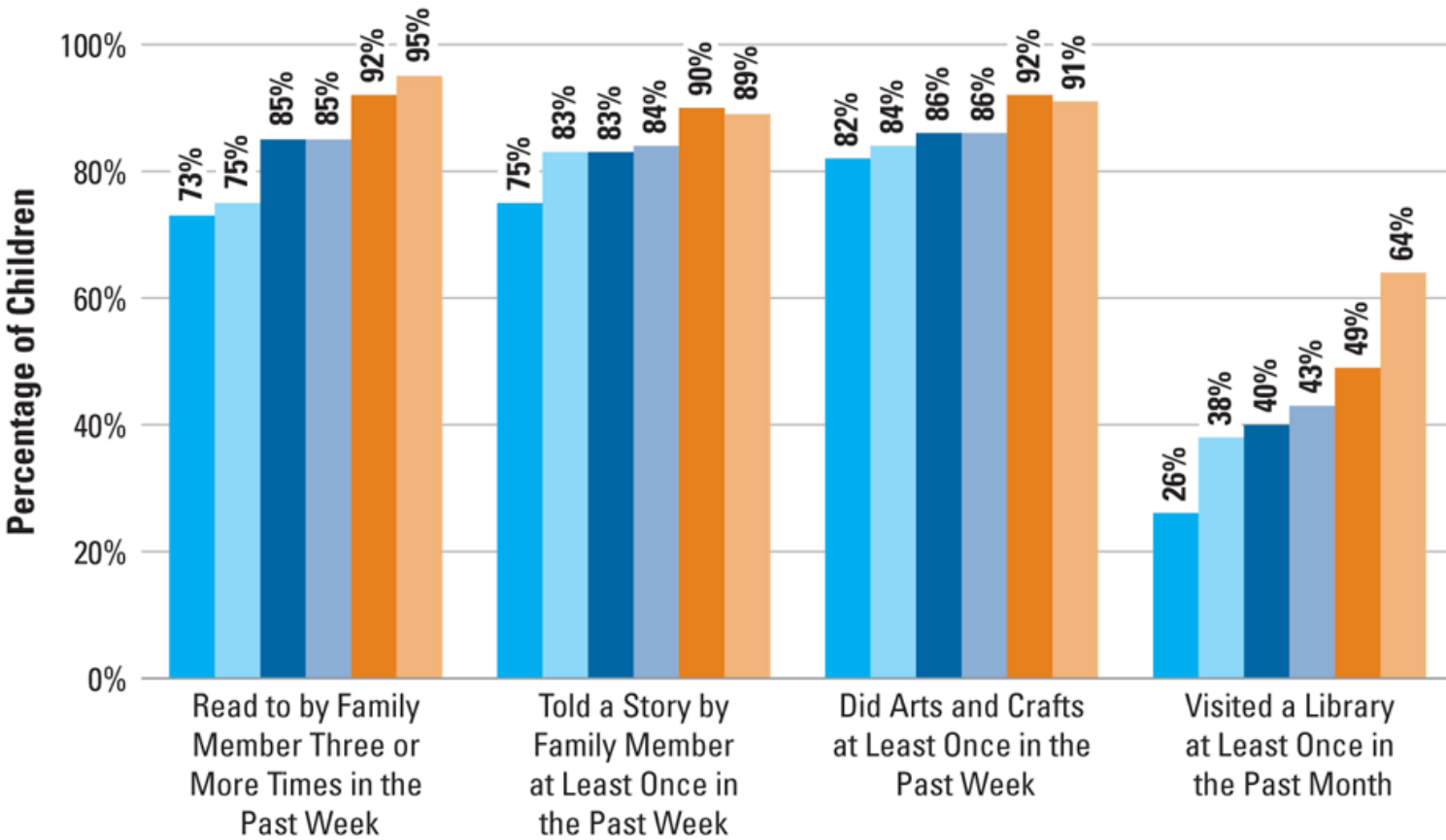


Obesity Rates Among Adults Age 25 and Older by Gender and Education Level, 1988–1994 and 2011–2014

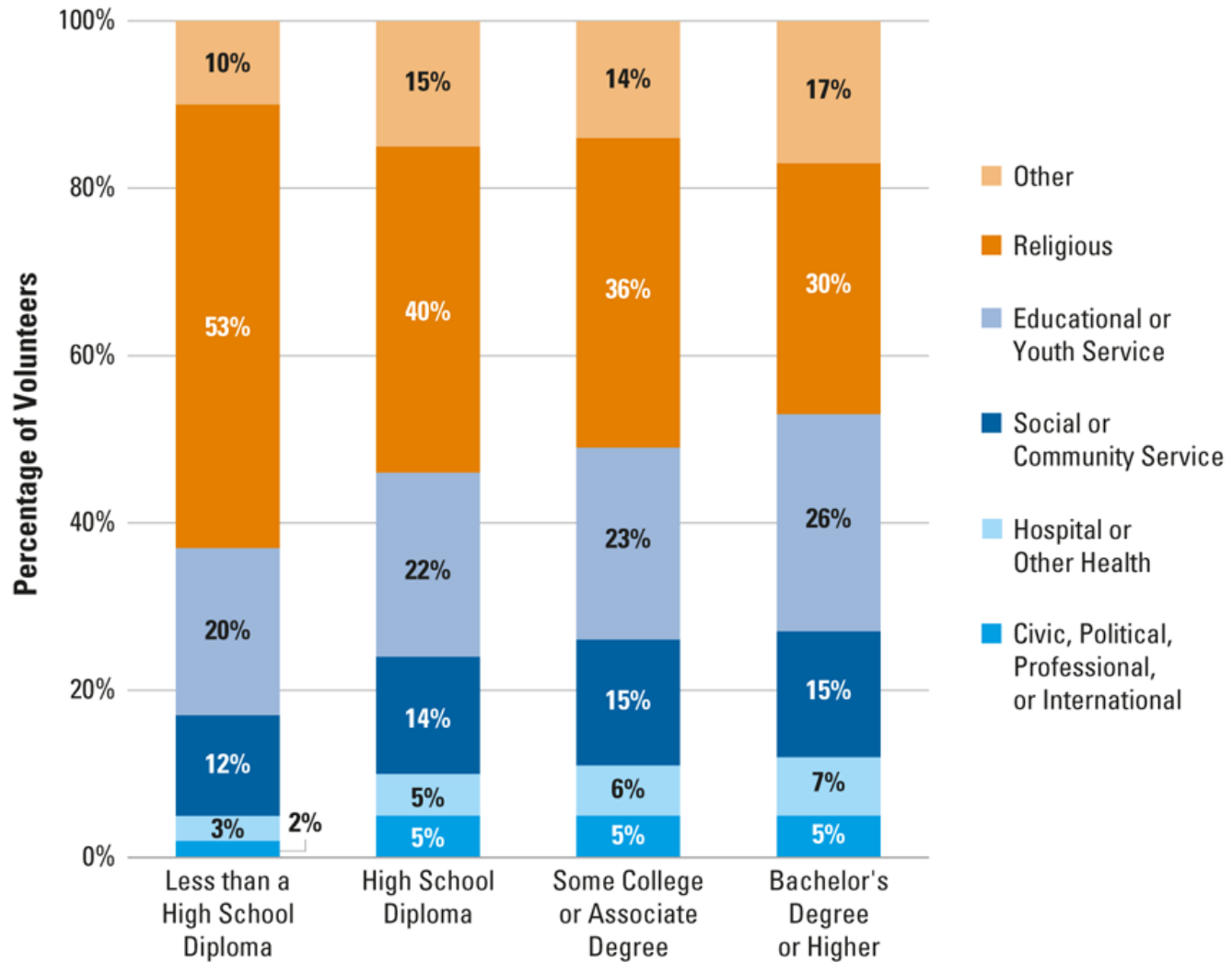


Percentage of 3- to 5-Year-Olds Participating in Activities with a Family Member, by Parents' Education Level, 2012

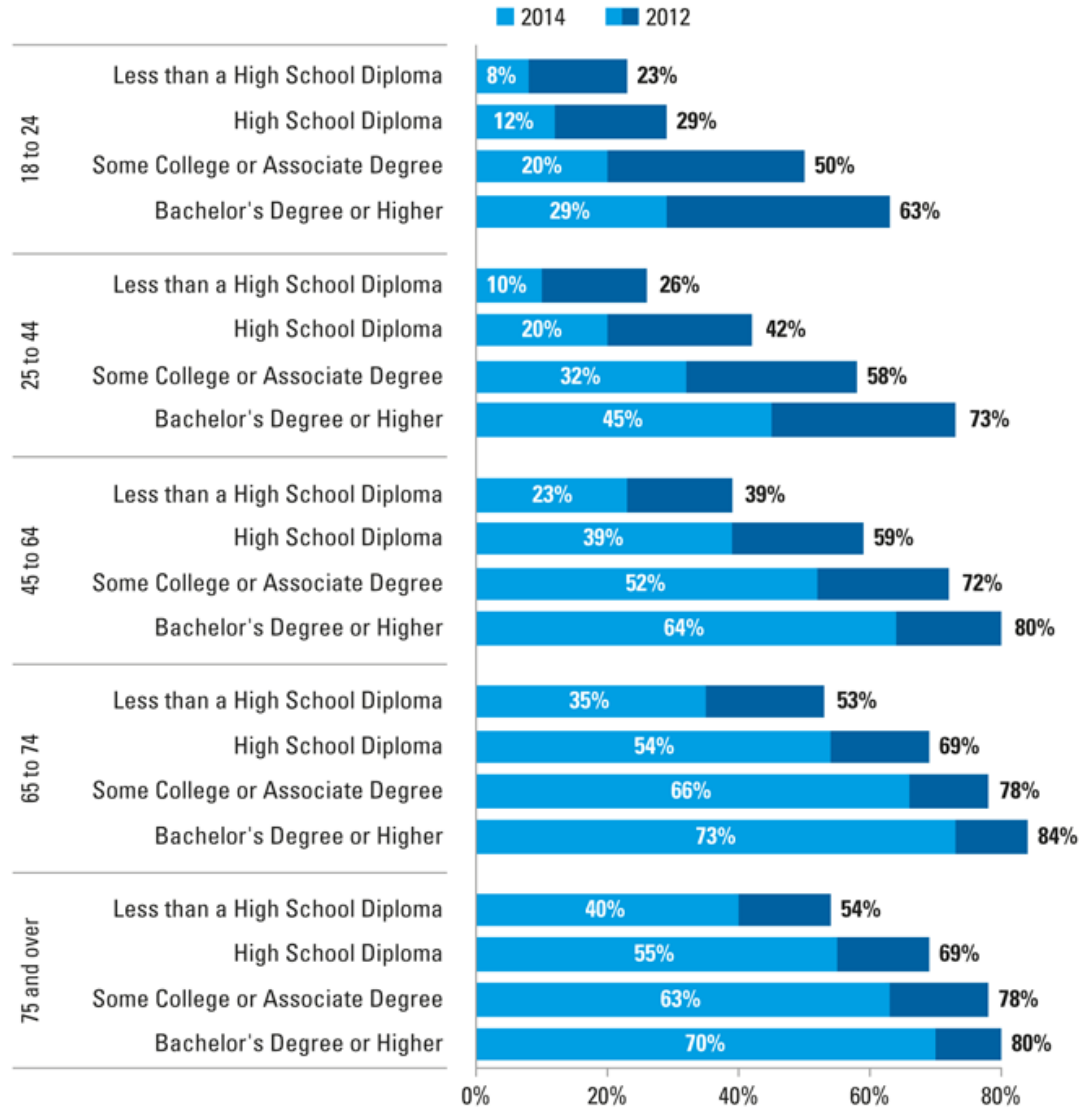
■ Less than a High School Diploma
 ■ High School Diploma
 ■ Some College, No Degree
 ■ Associate Degree
 ■ Bachelor's Degree
 ■ Advanced Degree



Percentage Distribution of Volunteers Age 25 and Older, by Type of Organization and Education Level, 2015



Voting Rates Among U.S. Citizens, by Age and Education Level, 2012 and 2014





Get **AHEAD** in Kansas!

Education – the thing itself, not the degree—is always good. A genuine education opens minds and makes good citizens. It ought to be pursued
for the sake of society.

Dr. Matthew Stewart

Many good things happen when you have an educated workforce and educated population.

Dr. Blake Flanders

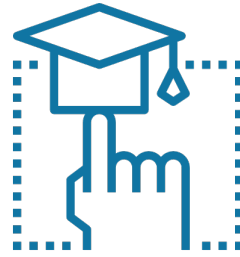


Get **AHEAD** in Kansas!

Welcome to the **Adult Higher Education Accessible Degrees** initiative, a Kansas Board of Regents project funded by the Lumina Foundation designed to help you

- ✓ Enroll in an online degree program
- ✓ Transfer college credits already earned
- ✓ Get credit for prior learning and military training
- ✓ Find out about financial aid options
- ✓ Finish your degree and get a promotion or a better job

www.getaheadkansas.org



Get AHEAD!

Program Options

- ✓ 90 online bachelor degree programs
- ✓ 80 online certificate & associate degree programs
- ✓ Hundreds of on-campus programs
 - ✓ 7 public universities
 - ✓ 19 public community colleges
 - ✓ 6 public technical colleges

It's Never Too Late to Get AHEAD in Kansas!



Complete to Compete Goals

- ✓ Create a statewide corps of ambassadors
- ✓ Develop Kansas Adult Student Assistance grants
- ✓ Encourage CTE concentrators to finish
- ✓ Leverage employer tuition assistance funds
- ✓ Increase the state attainment rate to 60%

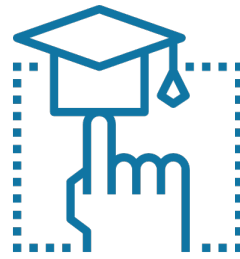
It's Never Too Late to Get AHEAD in Kansas!



Complete to Compete Partnerships

- ✓ Kansas Association of Community Foundations
- ✓ State Library & Public Libraries
- ✓ Dept. of Commerce & Workforce Centers
- ✓ SER Corporation
- ✓ SHRM Chapters

It's Never Too Late to Get AHEAD in Kansas!

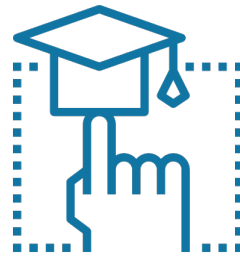


Get AHEAD!

Resources Available

- ✓ Financial Aid
- ✓ Credit for Prior Learning & Military Training
- ✓ Transfer Options
- ✓ Educational Opportunity Centers
- ✓ Career Guidance

It's Never Too Late to Get AHEAD in Kansas!



Get AHEAD!

Financial Aid

- ✓ Kansas Career Technical Workforce Grant
- ✓ Kansas Military Service Scholarship
- ✓ Kansas National Guard Educational Assistance Program
- ✓ Pell Grants
- ✓ Tuition Assistance Programs
- ✓ *Kansas Adult Student Assistance Grants**

It's Never Too Late to Get AHEAD in Kansas!

* Funding to be developed – initial goal is to raise \$1 million



Credit for Prior Learning

- ✓ Freshman Year for Free program
- ✓ College-Level Examination Program (CLEP)
- ✓ Collaborative on Military Credit project

It's Never Too Late to Get AHEAD in Kansas!



Transfer Options

- ✓ 91 Systemwide Transfer Courses
- ✓ Systemwide Reverse Transfer (2 > 4 > 2)
- ✓ 2 + 2 Program Agreements

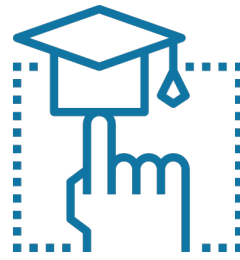
It's Never Too Late to Get AHEAD in Kansas!



Role of the Ambassadors

- ✓ Provide information about program options
- ✓ Provide information about resources
- ✓ Encourage adults to start/finish a PSE program
- ✓ Refer adults to key contacts

It's Never Too Late to Get AHEAD in Kansas!



Get AHEAD!

Ambassador Registration, Training & Activities

- ✓ Complete the online registration
- ✓ Participate in or view the GA/C2C webinars
- ✓ Meet with local leaders & organizations
- ✓ Distribute the GA business cards & brochures
- ✓ Refer adults to the resources & key contacts
- ✓ Stay in touch & encourage them to finish

It's Never Too Late to Get AHEAD in Kansas!

ATTAINMENT

ALIGNMENT

EXCELLENCE

Become a Get *AHEAD*
Ambassador today!